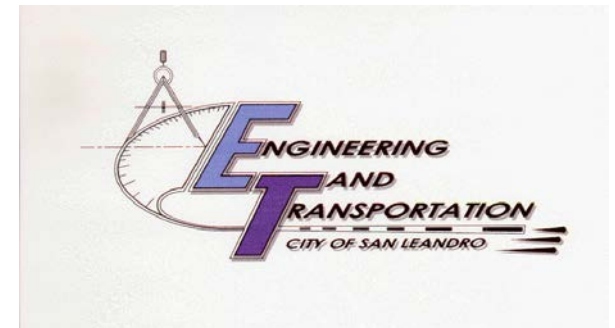


San Leandro Complete Streets Implementation Project



A presentation to the Facilities and Transportation Committee
City of San Leandro

November 3, 2015

Meeting Agenda

1. Current Status and Goals
2. Complete Streets Definition
3. Discuss current efforts
4. Next steps and project schedule

1. Current Status



Project Team

Project Management Team



Consultant Team



- Build internal, external and cross-jurisdictional stakeholder consensus on
 - Key gaps between existing practices and Complete Streets concepts; and
 - Necessary implementation steps to address these gaps
- Develop tools and processes for San Leandro that also have countywide applicability

2. What are Complete Streets?

Complete Streets are safe, comfortable, and convenient for travel for everyone, regardless of age or ability – motorists, pedestrians, bicyclists, and public transportation riders.



Complete Streets Serve All Users

- Pedestrians
- Bicyclists
- Transit Users
- Motorists
- Goods Movement
- People with Disabilities
- People of All Ages and Abilities
- Emergency Responders



Complete Streets are context sensitive
A major arterial will look different...



Complete Streets are context sensitive
...than a neighborhood street,



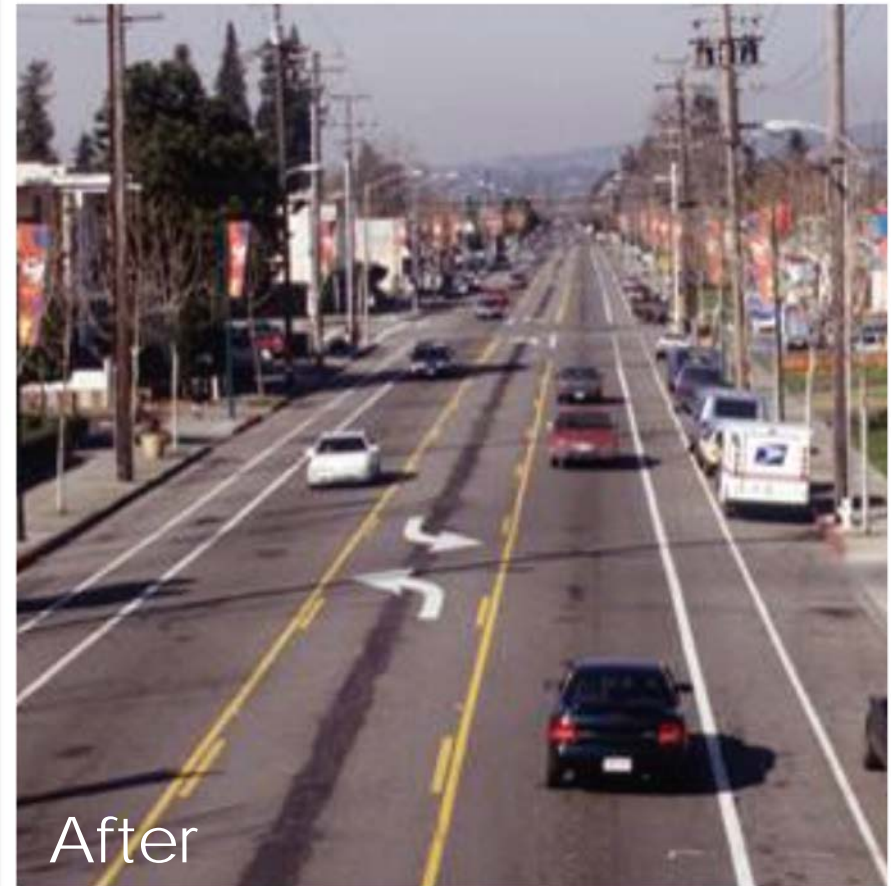
Complete Streets are context sensitive
...a rural roadway,



Complete Streets are context sensitive
...an industrial route

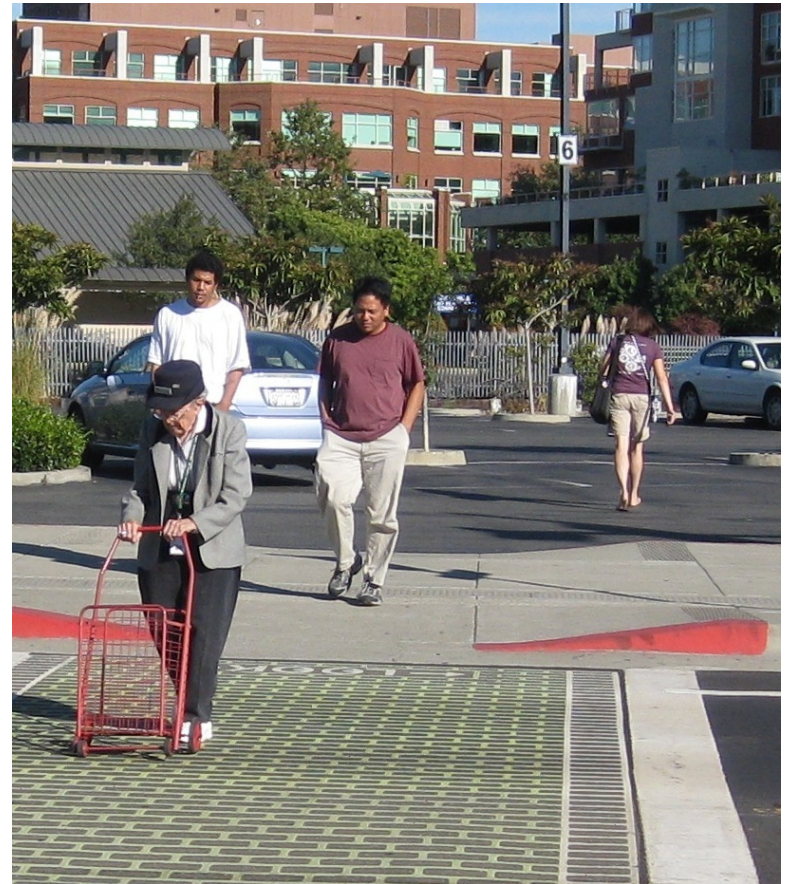


San Leandro Road Diet

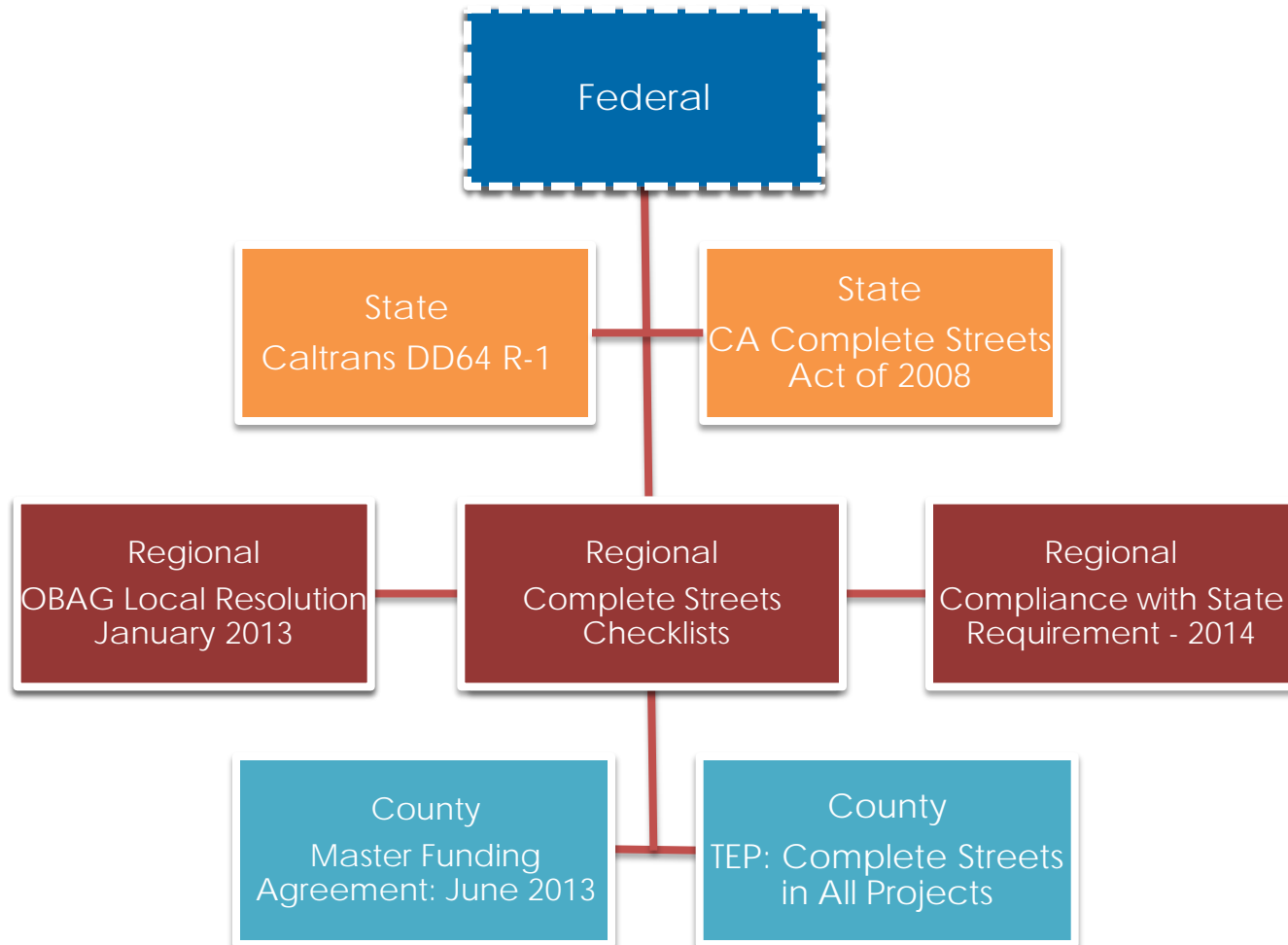


Benefits of Complete Streets

- Improved safety
- Increased mobility for all users and modes
- Improved air and water quality
- Improved public health
- Enhanced economic competitiveness
- Increased livability



State, Regional, and County Policy Requirements



3. Complete Street Implementation Tools

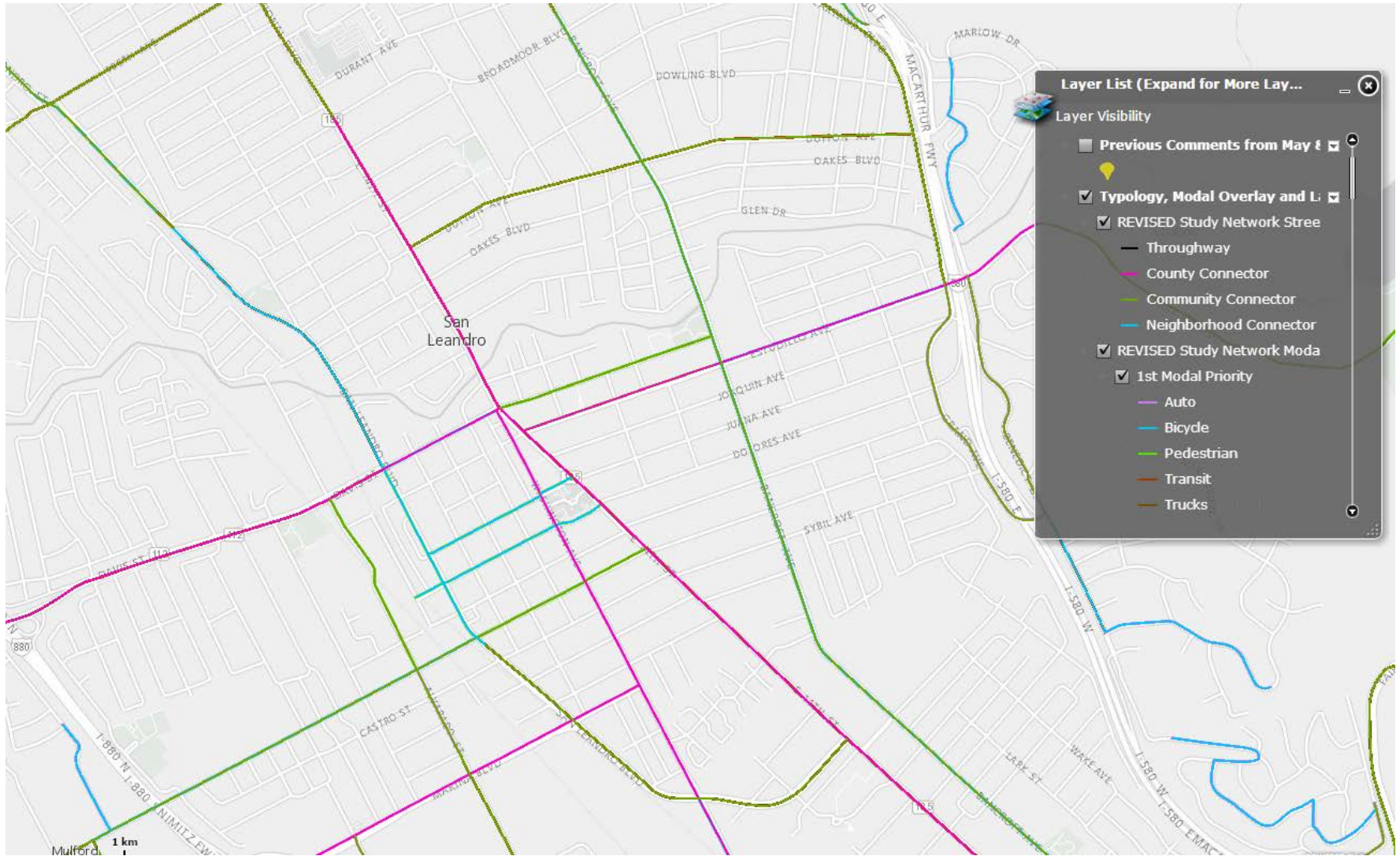
Develop Complete Streets Design Guidelines to ensure that San Leandro street designs consider the full range of users on every street and accommodate these users wherever possible

Develop Complete Streets Project Checklists/Project Delivery Flow Charts to assist project managers in the successful application of Complete Streets Design Guidelines to all projects



Sources: National Complete Streets Coalition, Walkable and Livable Communities Institute

Multimodal Complete Street Typology



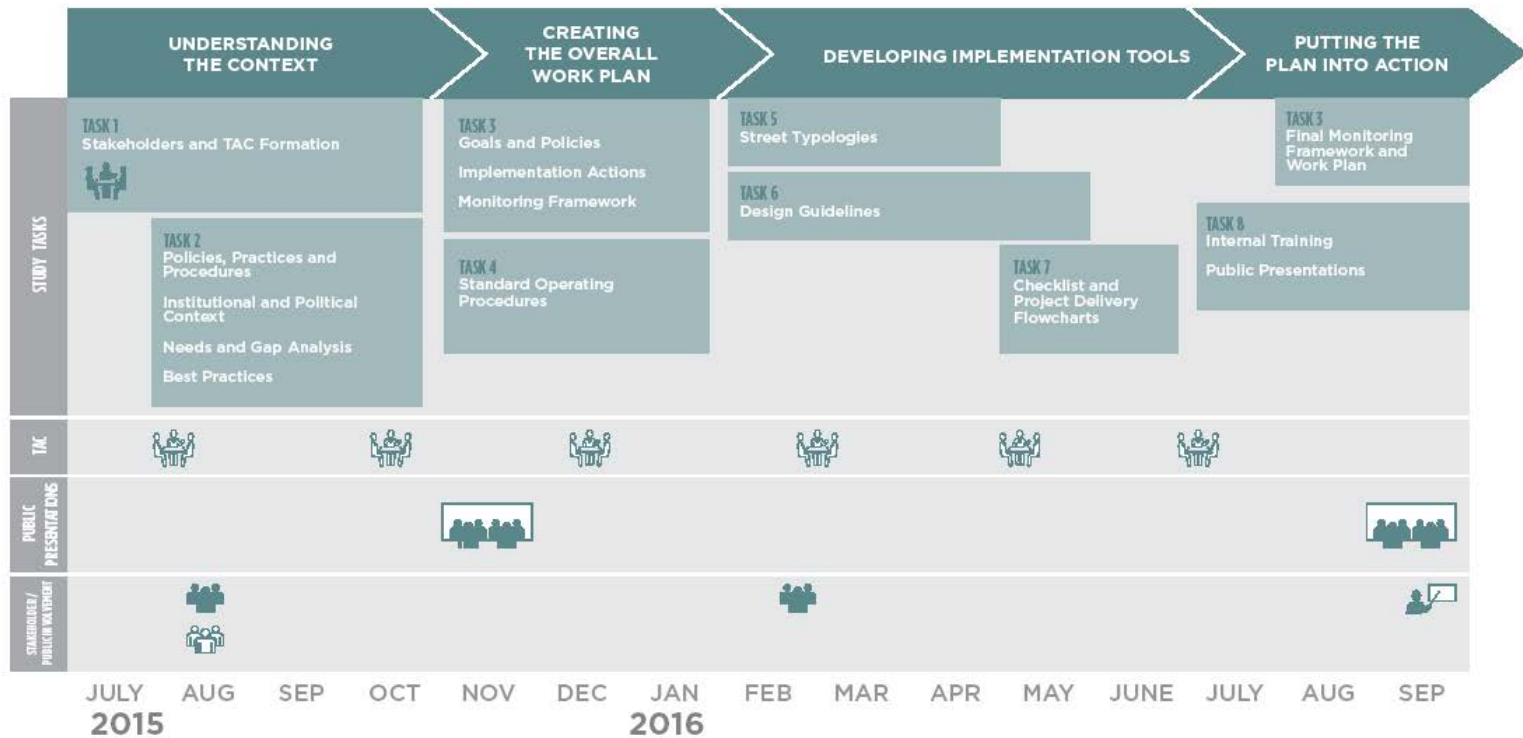
Standard Operating Procedures

Example Standard Operating Procedure Framework (ITE's Designing Walkable Urban Thoroughfares)

User	Responsibilities
All Users	<ul style="list-style-type: none"> • Participate in preparing transportation plans; • Help establish community vision and project goals and objectives; and • Help develop and evaluate thoroughfare concepts, alternatives and impacts.
Transportation Planner	<ul style="list-style-type: none"> • Develops and evaluates long-range transportation plans; • Helps establish community vision and project goals and objectives; • Develops and evaluates thoroughfare concepts, alternatives and impacts; and • Works with public, stakeholders and multidisciplinary teams to integrate transportation and land use planning.
Traffic/Civil Engineer	<ul style="list-style-type: none"> • Prepares purpose and need for transportation projects; • Develops initial thoroughfare concepts and prepares detailed evaluations of these concepts; • Identifies design controls and parameters, constraints and trade-offs; • Works with public, stakeholders and multidisciplinary teams to resolve design challenges; and • Prepares preliminary and final engineering plans.
Land Use Planner	<ul style="list-style-type: none"> • Develops long-range land use plans; • Helps establish community vision and goals and objectives for neighborhoods and corridors; • Works with multidisciplinary team to establish and identify context; • Formulates land use policy that affects thoroughfare design; and • Establishes land use regulations (subdivision, zoning and so forth) that guide context.
Design Professional (Architect, Urban Designer, Landscape Architect)	<ul style="list-style-type: none"> • Designs integral elements of the thoroughfare and its surrounding context including buildings, sites and streetscape features; • Works with public, stakeholders and multidisciplinary teams to resolve design challenges; and • Prepares environmental assessments; identifies impacts and mitigation measures.
Stakeholders (Elected Officials, Appointed Commissioners, Developers, Local, Regional and State Agencies, Citizens)	<ul style="list-style-type: none"> • Provide local and regional input and leadership; • Provide funding and financing mechanisms for development of context and thoroughfares; • Have jurisdiction and approval authority over plans and designs; and • Work closely with the general public to achieve community acceptance of projects.

Implementation Schedule

PROJECT SCHEDULE



-  Kick-Off Meeting
-  Technical Advisory Committee Meeting
-  Internal Stakeholder Interviews
-  External Stakeholder Interviews
-  Training
-  Public Presentations