

AMENDED ASSESSMENT DIAGRAM
PLAZA ASSESSMENT DISTRICT NO. 1
(STREET OPENING ACT OF 1903)
CITY OF SAN LEANDRO
ALAMEDA COUNTY, CALIFORNIA

AMENDING PLAZA ASSESSMENT DISTRICT NO. 1
(STREET OPENING ACT OF 1903)

RECORDED NOVEMBER 12, 1969 IN BOOK 1 OF MAPS OF
ASSESSMENT DISTRICTS, AT PAGE 128, ALAMEDA COUNTY RECORDS,
OCTOBER, 1981
SCALE: 1"=50'

THIS AMENDED ASSESSMENT DIAGRAM IS AN AMENDED ASSESSMENT DIAGRAM
OF THE PLAZA ASSESSMENT DISTRICT NO. 1 (STREET OPENING ACT OF 1903),
CITY OF SAN LEANDRO, ALAMEDA COUNTY, CALIFORNIA. THE ASSESSMENT
DIAGRAM WAS DATED APRIL 1967 AND WAS FILED NOVEMBER 12, 1969
IN BOOK 1 OF MAPS OF ASSESSMENT DISTRICTS, AT PAGE 128, ALAMEDA
COUNTY RECORDS.

FILED THIS 10th DAY OF December, 1981 AT 2:00 PM M. IN THE OFFICE
OF THE COUNTY RECORDER OF ALAMEDA COUNTY, CALIFORNIA IN BOOK 1
OF MAPS OF ASSESSMENT DISTRICTS, AT PAGES 227-228.
81-205994
DH

RENE C. DAVIDSON
COUNTY RECORDER
ALAMEDA COUNTY, CALIFORNIA


FILED THIS 10th DAY OF December, 1981 IN THE OFFICE OF THE
SUPERINTENDENT OF STREETS OF THE CITY OF SAN LEANDRO, ALAMEDA
COUNTY, CALIFORNIA.

P. H. Long
P. H. LONG R.C.E. 13170
SUPERINTENDENT OF STREETS
CITY OF SAN LEANDRO
ALAMEDA COUNTY, CALIFORNIA

BY Reggie D. Mayberry
DEPUTY

FILED THIS 10th DAY OF December, 1981 IN THE OFFICE OF THE CITY
CLERK OF THE CITY OF SAN LEANDRO, ALAMEDA COUNTY, CALIFORNIA.

Richard A. West
RICHARD A. WEST
CITY CLERK
CITY OF SAN LEANDRO
ALAMEDA COUNTY, CALIFORNIA



FILED THIS 10th DAY OF Dec, 1981 IN THE OFFICE OF THE COUNTY
AUDITOR OF ALAMEDA COUNTY, CALIFORNIA.

DONALD PARKIN
COUNTY AUDITOR
ALAMEDA COUNTY, CALIFORNIA

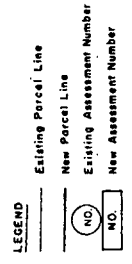
BY Thomas J. ...
DEPUTY

Plaza Assmt Dist 1 San Leandro

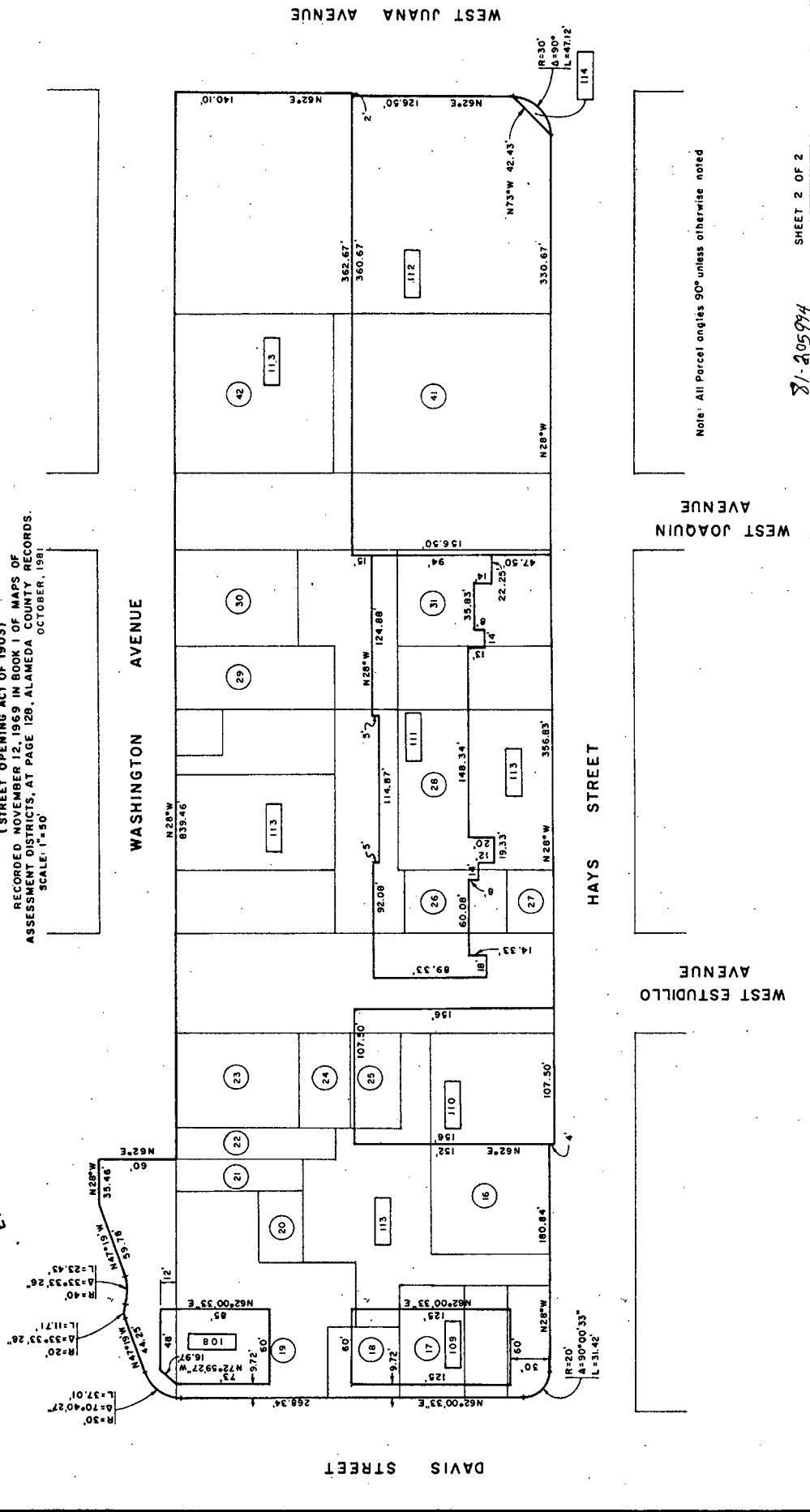
AMENDED ASSESSMENT DIAGRAM PLAZA ASSESSMENT DISTRICT NO. 1 (STREET OPENING ACT OF 1903)

CITY OF SAN LEANDRO
ALAMEDA COUNTY, CALIFORNIA

AMENDING PLAZA ASSESSMENT DISTRICT NO. 1
(STREET OPENING ACT OF 1903)
RECORDED NOVEMBER 12, 1969 IN BOOK 1 OF MAPS OF
ASSESSMENT DISTRICTS, AT PAGE 128, ALAMEDA COUNTY RECORDS.
SCALE: 1"=50' OCTOBER, 1981



EAST IAIN STREET



Note: All Parcel angles 90° unless otherwise noted

81-205994 SHEET 2 OF 2

Plaza Assmt Dist 1 San Leandro Bk 1 Pp 897-898

898