

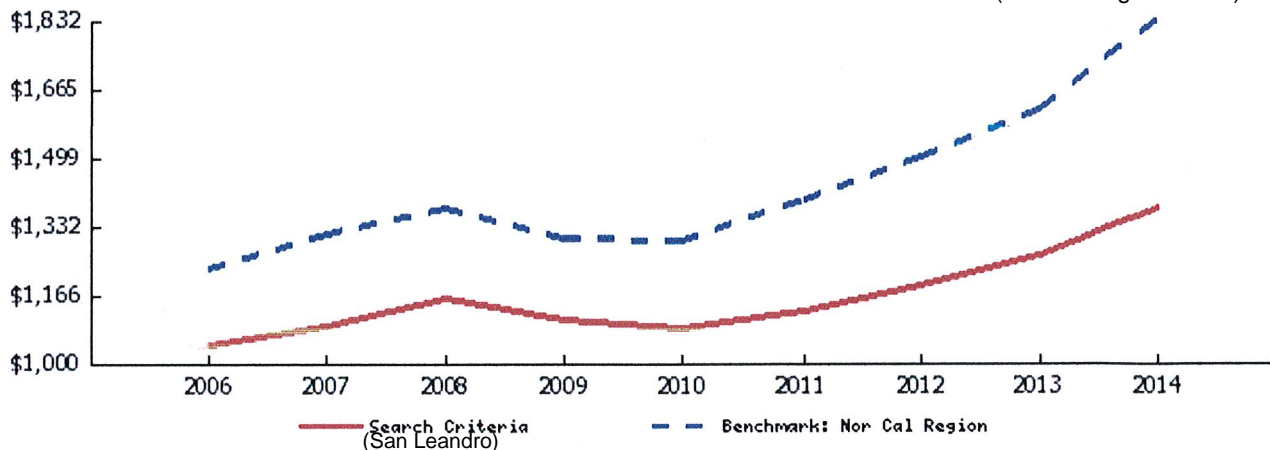
# ATTACHMENT A (AS OF MARCH 25, 2015)

## Average Asking Rent

	2006	2007	2008	2009	2010	2011	2012	2013	2014	4 Yr. Change
AVERAGE	\$1,040	\$1,090	\$1,154	\$1,106	\$1,086	\$1,123	\$1,189	\$1,263	\$1,377	26.8%
studio	\$853	\$876	\$941	\$892	\$886	\$926	\$998	\$999	\$1,047	18.2%
1bd 1bth	\$931	\$978	\$1,036	\$994	\$974	\$1,020	\$1,077	\$1,144	\$1,261	29.4%
2bd 1bth	\$1,128	\$1,190	\$1,266	\$1,240	\$1,202	\$1,230	\$1,264	\$1,312	\$1,405	16.9%
2bd 2bth	\$1,246	\$1,283	\$1,351	\$1,291	\$1,279	\$1,299	\$1,404	\$1,546	\$1,674	30.8%
2bd TH	\$1,288	\$1,387	\$1,451	\$1,323	\$1,337	\$1,365	\$1,456	\$1,558	\$1,698	27.0%
3bd 2bth	\$1,556	\$1,610	\$1,411	\$1,320	\$1,395	\$1,325	\$1,387	\$1,250		
3bd TH	\$1,600	\$1,605	\$1,725	\$1,641	\$1,680	\$1,716	\$1,797	\$1,890	\$2,047	21.8%

\* TH = townhome

(8 Yr. Change - 32.4%)



## Average Occupancy Rate

	2006	2007	2008	2009	2010	2011	2012	2013	2014	4 Yr. Change
AVERAGE	96.4%	96.4%	96.9%	94.6%	95.9%	97.4%	97.0%	97.7%	98.1%	2.3%

(8 Yr. Change - 1.7%)

