

The background of the slide is a light gray gradient with several realistic water droplets of various sizes scattered across it. The droplets have highlights and shadows, giving them a three-dimensional appearance.

# STORM PREPAREDNESS

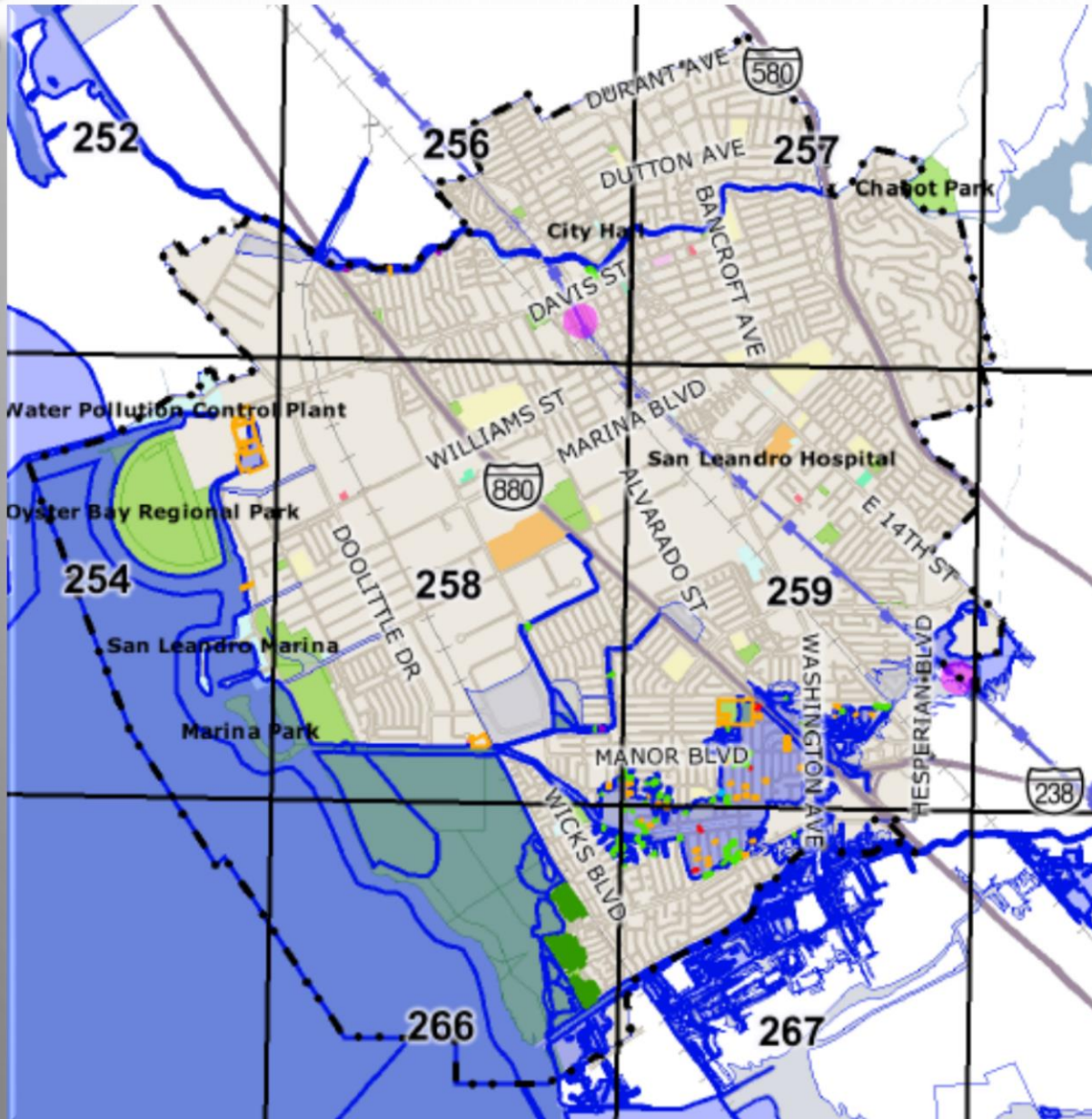
CITY COUNCIL – NOVEMBER 16, 2015

SAN LEANDRO POLICE DEPARTMENT  
SAN LEANDRO PUBLIC WORKS DEPARTMENT  
ALAMEDA COUNTY FIRE DEPARTMENT

# WHAT WE'VE DONE/WHAT WE'RE DOING

- ANNUAL CLEAN-OUT OF V-DITCHES ON PRIVATE PROPERTIES (MOSTLY IN BAY-O-VISTA AREA; COMPLETED)
- ANNUAL CLEANING OF ALL STORM DRAINS (WORK SHOULD BE COMPLETED BY THE END OF JANUARY)
- THE WPCP SEES FLOWS INCREASE FROM 5 MGD TO 22 MGD; NEW ON-SITE STORAGE AND PUMPING SYSTEMS SHOULD HELP DURING STORM EVENTS
- SANITARY AND STORM LIFT STATION PREPARATION
- WPCP STAFF TRAINING/PREPAREDNESS
  - PUMP BYPASS PROCEDURES
  - CAL WARN MUTUAL ASSISTANCE PROTOCOLS
  - CROSS-TRAINING OF WPCP OPERATORS WITH EBDA (WE ARE CALL-OUT STAFF FOR EBDA)
  - CLASS-ROOM AND FIELD TRAINING ON NEW DIVERSION PROTOCOLS, STORAGE AND RETURN SYSTEMS
  - RE-WRITING WET WEATHER STANDARD OPERATING PROCEDURE (SOP)
  - REVIEW AND LESSONS LEARNED FROM PREVIOUS STORM EVENTS
- SETTING UP OPEN PO WITH LOCAL CONSTRUCTION CONTRACTOR TO PROVIDE ON-CALL

# PROBLEM AREAS IN THE CITY



2009 FEMA  
Data



# PROBLEM AREAS IN THE CITY

Storm Drain System for the City of San Leandro



24

Legend

Storm Drain Lines

Alameda County

City of San Leandro

Unknown

Storm Drain Manholes

Scale: 0, 200, 400, 600, 800, 1,000 Feet



- Wicks Storm Station
- Neptune/Marina

# PROBLEM AREAS IN THE CITY

## WHAT ARE KING TIDES?

- WHILE THE TERM 'KING TIDE' ISN'T A SCIENTIFIC TERM, IT IS USED TO DESCRIBE AN ESPECIALLY HIGH TIDE EVENT, WHEN THERE IS ALIGNMENT OF THE GRAVITATIONAL PULL BETWEEN SUN AND MOON
- WHEN KING TIDES OCCUR DURING CYCLONES, FLOODS OR STORMS, WATER LEVELS CAN RISE TO HIGHER LEVELS AND HAVE THE POTENTIAL TO CAUSE GREATER DAMAGE TO PROPERTY AND THE COASTLINE
- THE KING TIDES ARE NO MORE THAN THE VERY HIGHEST TIDES THAT OCCUR AT EACH PLACE. THEY:
  - OCCUR NATURALLY AND REGULARLY
  - ARE PREDICTABLE AND EXPECTED
  - ARE NOT AN EVERY DAY OCCURRENCE

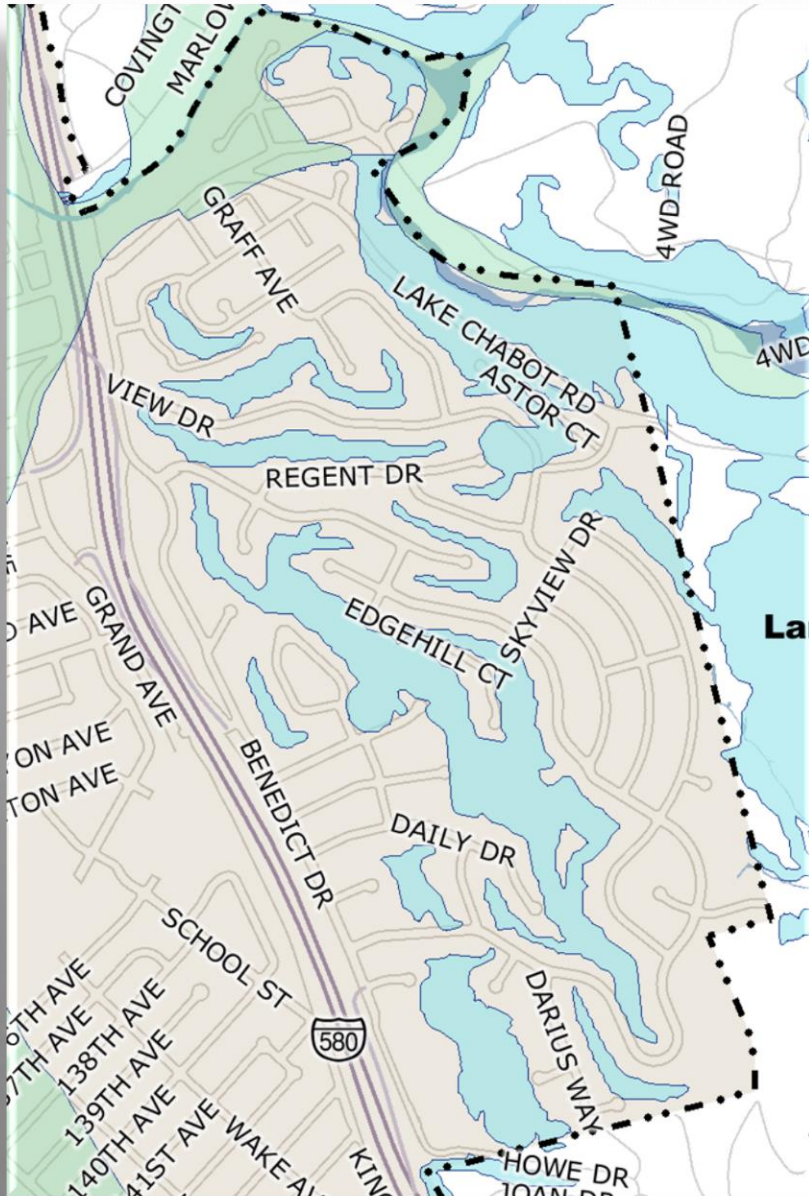


## 2015/2016 KING TIDES SEASON DATES

- **NOVEMBER 24, 25, AND 26, 2015**
- **DECEMBER 22, 23, AND 24, 2015**
- **JANUARY 21 AND 22, 2016**



# PROBLEM AREAS IN THE CITY



- LANDSLIDE HAZARDS PRIMARILY ON PRIVATE PROPERTY (FROM SEISMIC EVENT AS WELL AS SURFACE WATER (RAIN) RUN-OFF)
- PUBLIC WORKS MAINTAINS (CLEANS OUT ANNUALLY) PRIVATE V-DITCHES FOR CONVEYANCE OF STORM WATERS; AND MAINTAINS GEOLOGIC HAZARD ABATEMENT DISTRICT (GHAD) RESULTING FROM HILLSIDE HOMES THAT SLID IN 1998
- PW STAFF HAS RECENTLY PERFORMED PREVENTATIVE ROAD MAINTENANCE ON LAKE CHABOT ROAD, BETWEEN SANDELIN AND ASTOR

# WHAT RESIDENTS/BUSINESSES CAN DO

STORM DRAINS HAVE LIMITED CAPACITY AND LOCALIZED FLOODING MAY OCCUR IN LOW-LYING AREAS AND/OR AT HIGH TIDES DURING AN INITIAL DOWNPOUR. PROPERTY OWNERS CAN HELP BY:

- CHECKING DRAINAGE SYSTEMS AND REMOVING DEBRIS AS NECESSARY
- COLLECT AND PROPERLY DISPOSE OF HEAVY LEAF FALLS BEFORE STORMS OCCUR
- REMOVE LEAVES/DEBRIS FROM STORM DRAIN INLETS WITH A RAKE OR SHOVEL
- USE SANDBAGS AND PLASTIC SHEETING TO PROTECT FLOOD-PRONE ENTRANCES TO HOMES





# WHAT RESIDENTS/BUSINESSES CAN DO



TREE CREWS RESPOND TO DOWNED TREES/LIMBS BASED ON THE SERIOUSNESS OF THE HAZARD. DURING A STORM, PRIORITY IS GIVEN TO REMOVING TREES/LIMBS FROM STREETS/SIDEWALKS. CREWS WILL ALSO PRIORITIZE STREET TREE/LIMB REMOVAL FROM HOMES, CARS AND POWER LINES

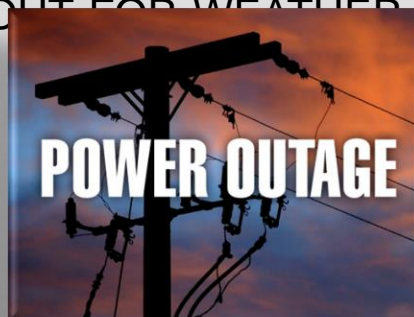
- *CLEAN-UP OF PRIVATELY-OWNED TREES/LIMBS IS THE RESPONSIBILITY OF THE OWNER, WHETHER THE CLEAN-UP IS ON THE OWNER'S PROPERTY OR NEIGHBORING PROPERTY, INCLUDING CITY PROPERTY*
- PROPERTY OWNERS SHOULD CONTACT PRIVATE TREE COMPANIES, THEIR INSURANCE COMPANY, AND PG&E DIRECTLY IF THEIR PRIVATE TREE FALLS AND CAUSES DAMAGE TO THEIR PROPERTY
- CITY TREES THAT HAVE FALLEN ON PRIVATE PROPERTY ARE THE RESPONSIBILITY OF THE CITY TO CLEAR



# WHAT RESIDENTS/BUSINESSES CAN DO



- **GET PREPARED!**

- **INVESTIGATE** PREPAREDNESS TIPS PRIOR TO STORMS (VARIETY OF SOLUTIONS)
- **BE AWARE** OF INCOMING STORMS
- **MAKE** A STORM, FAMILY, BUSINESS **EMERGENCY PLAN**
- **BUILD** OR **RESTOCK** YOUR **EMERGENCY PREPAREDNESS**
- **FAMILIARIZE** YOURSELF WITH **LOCAL EMERGENCY PLANS**
- **REGISTER** AND/OR **STAY TUNED** TO LOCAL EMERGENCY **ALERTS** VIA CELL PHONE, TV, OR RADIO
- **KEEP** A CLOSE EAR/EYE OUT FOR WEATHER UPDATES, EMERGENCY INSTRUCTIONS, OR ORDERS



# INFORMATION AND RESOURCES

- SIGN-UP FOR AND STAY CONNECTED WITH:

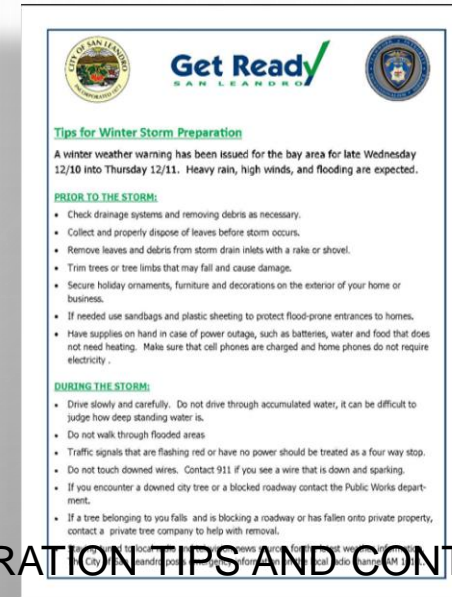
- TUNE INTO 1610 AM ON YOUR RADIO
- NEXTDOOR - RECEIVE REAL-TIME UPDATES 
- NIXLE 360 - RECEIVE REAL-TIME UPDATES FROM 
- FOLLOW PD ON TWITTER/FACEBOOK
- UVERSE – CHANNEL 99
- COMCAST – CHANNEL 13

- VISIT CITY'S STORM INFORMATION PAGE FOR HELPFUL PREPARATION TIPS AND CONTACTS

- [HTTP://WWW.SANLEANDRO.ORG/DEPTS/PW/STORM.ASP](http://www.sanleandro.org/depts/pw/storm.asp)

- IF YOU EXPERIENCE EMERGENCY FLOODING OR HAZARDS CAUSED BY A DOWNED TREE/LIMB, PLEASE USE THE FOLLOWING CONTACT NUMBERS:

- DURING REGULAR BUSINESS HOURS (WEEKDAYS, 7 AM TO 3:30 PM), CALL THE PUBLIC WORKS DEPARTMENT AT 577-3440
- AFTER HOURS AND ON WEEKENDS/HOLIDAYS, CALL POLICE DISPATCH AT 577-2740
- *PLEASE, DO NOT CALL 911 TO REPORT FLOODING UNLESS RISING WATER POSES AN IMMEDIATE THREAT TO LIFE OR SAFETY.*





# INFORMATION AND RESOURCES

- SAN LEANDRO POLICE DISPATCHERS WILL BE PRIORITIZING ALL WEATHER-RELATED EMERGENCY CALLS
- SANDBAGS ARE AVAILABLE AT THE PUBLIC WORKS SERVICE CENTER TO CITY RESIDENTS AND BUSINESSES
  - SELF-SERVE (YOU FILL THE BAGS WITH SAND)
  - LIMIT OF 10 BAGS PER HOUSEHOLD OR BUSINESS
  - DURING BUSINESS HOURS, COME TO PW OFFICE FOR BAGS; LIMITED SUPPLIES ARE LEFT OUTSIDE GATE AFTER HOURS AND ON WEEKENDS WHEN A STORM IS IMMINENT/IN PROGRESS
  - IF THE CITY TEMPORARILY RUNS OUT OF SAND BAG SUPPLIES OR YOU NEED MORE THAN 10, PRE-FILLED SANDBAGS MAY BE AVAILABLE AT LOCAL HOME IMPROVEMENT STORES



- **SERVICE AREA OF 508 SQUARE MILES**

- UNINCORPORATED COUNTY (EXCLUSIVE OF THE FAIRVIEW AREA)
- CITY OF DUBLIN
- CITY OF EMERYVILLE
- CITY OF NEWARK
- CITY OF SAN LEANDRO
- CITY OF UNION CITY
- LAWRENCE BERKELEY NATIONAL LABORATORY
- LAWRENCE LIVERMORE NATIONAL LABORATORY
- ALAMEDA COUNTY REGIONAL EMERGENCY COMMUNICATIONS CENTER



- **APPROXIMATELY 394,000 CITIZENS**





## **EMERGENCY OPERATIONS**

- 30 FIRE STATIONS
- 26 ENGINES, 7 TRUCKS, 1 HEAVY RESCUE & 4 BATTALION CHIEFS (24/7)
- 442 FULL TIME EMPLOYEES (FIRE – 403, ACRECC – 39)
- 100 RESERVES

## **SPECIALIZED EQUIPMENT**

- 1 BULL DOZER
- 3 ZODIAC RESCUE BOATS & 1 PROTECTOR BOAT
- 2,500 GALLON WATER TENDER
- STATE CERTIFIED TYPE I HEAVY RESCUE
- STATE CERTIFIED TYPE I HAZARDOUS MATERIALS RESPONSE TEAM



## ACFD RESOURCES IN SAN LEANDRO

- DIVISION CHIEF
- BATTALION 4
  - 5 ENGINES
  - 2 TRUCKS
  - 21 FIREFIGHTERS & 1 BATTALION CHIEF 24/7
- FIRE PREVENTION
  - 1 DEPUTY FIRE MARSHAL
  - 1 CODE COMPLIANCE
- PRIMARY ACFD TRAINING FACILITY
  - 4 STAFF CAPTAINS
- SPECIALIZED RESOURCES
  - RESCUE BOATS
  - HAZARDOUS MATERIALS RESPONSE TEAM







# COMMUNITY PROVIDED / OFFERED

What  
ACFD has  
done / is  
doing?

Training  
Education  
Awareness  
Empowerment

GR5

PEP

CERT

TOPIC SPECIFIC

