

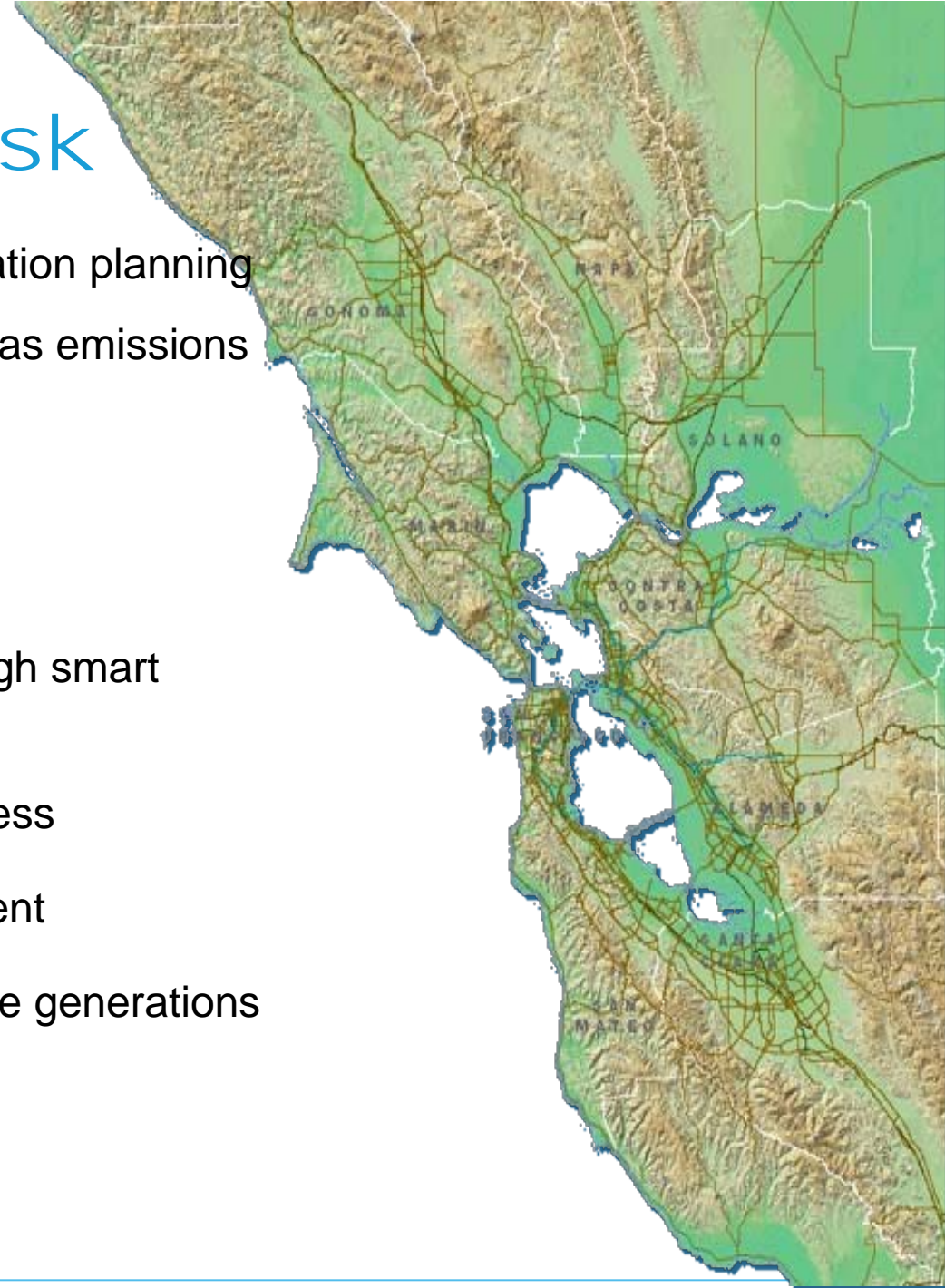


Plan BayArea

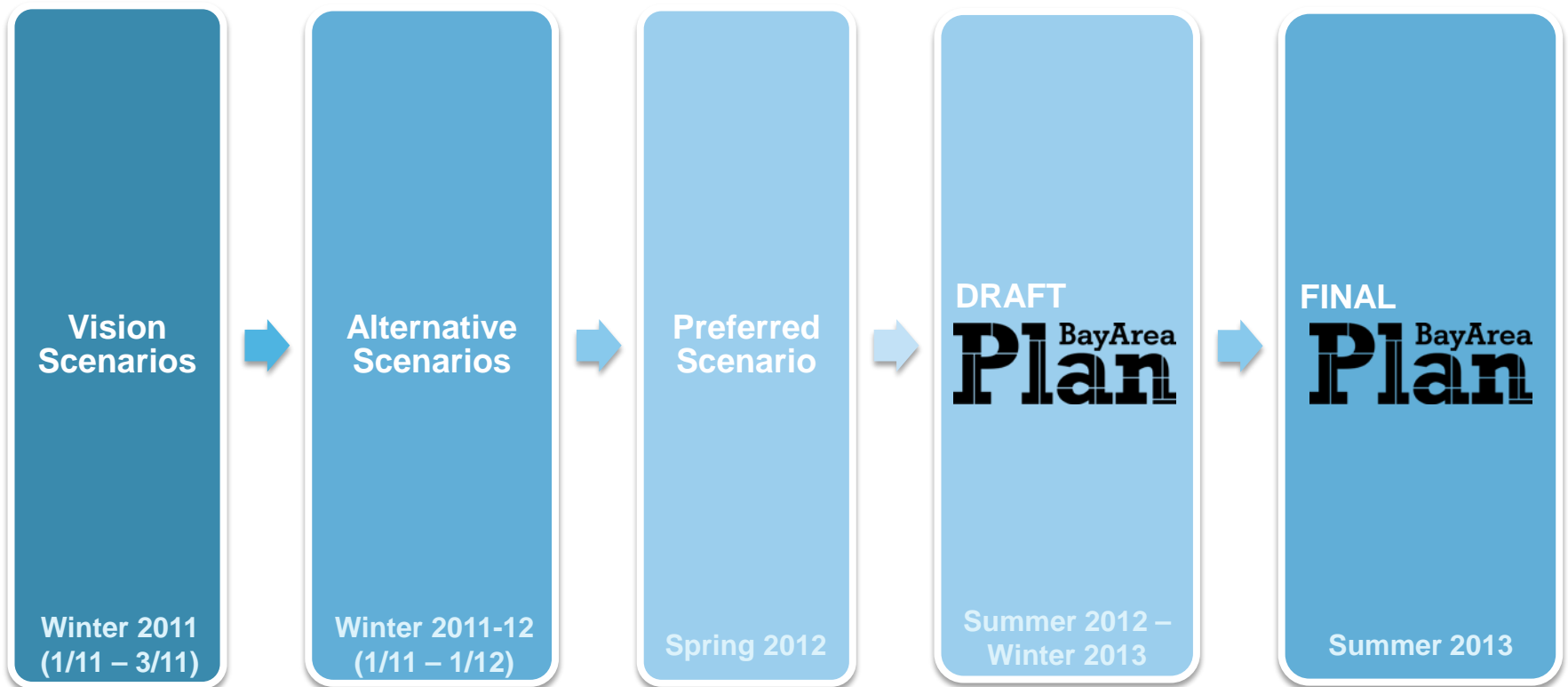
Draft Plan Bay Area Presentation
City Council
City of San Leandro
June 17, 2013

The Regional Task

- Integrate land use and transportation planning
- Reduce per capita greenhouse gas emissions
- House the region's population at all income levels
- Build on local plans
- Stretch available revenues through smart investments
- Increase economic competitiveness
- Preserving our natural environment
- A healthy, vibrant region for future generations



Plan Bay Area Development Process



- Adopt Performance Targets

- Adopt Equity Measures

- EIR Alternatives

- EIR
- Performance Assessment Report
- Equity Analysis Report

City Input During Planning Process

- January 2011 – Alameda County Planning Directors letter to ABAG/MTC addressing challenges and obstacles for Plan Bay
- Spring 2011- Presented Initial Vision Scenario to City Council and Planning Commission
- May 2011 – City letter to ABAG/MTC commenting on Initial Vision Scenario household population projections based on City planning projections
- Summer 2011 – City feedback to ABAG via Alameda County Transportation Commission regarding jobs, housing and GIS data
- 2010-12 - Staff served on Regional Advisory Working and Technical Advisory Working Groups

Draft Plan Bay Area

Growth Trends

Bay Area Region

	2010	2040	Growth 2010-2040	%Growth
Jobs	3,385,000	4,505,000	1,120,000	33%
Housing Units	2,786,000	3,446,000	660,000	24%

San Leandro Employment Growth

	2010	2040	Growth 2010-2040	% Growth
San Leandro	39,900	52,830	12,930	32%
Bay Fair PDA	1,430	2,690	1,260	
Downtown TOD PDA	2,790	2,840	50	
E. 14 th St PDA	9,000	15,670	6,670	

Note: Bay Area Regional Growth Rate = 33%

San Leandro Housing Unit Growth

	2010	2040	Growth 2010-2040	% Growth
San Leandro	32,420	39,630	7,210	22%
Bay Fair PDA	660	1,560	900	
Downtown TOD PDA	4,210	7,900	3,690	
E. 14 th St PDA	4,920	6,240	1,320	

Note: Bay Area Regional Growth Rate = 24%

Employment Trends

Knowledge-based and Service Industries Lead Job Growth

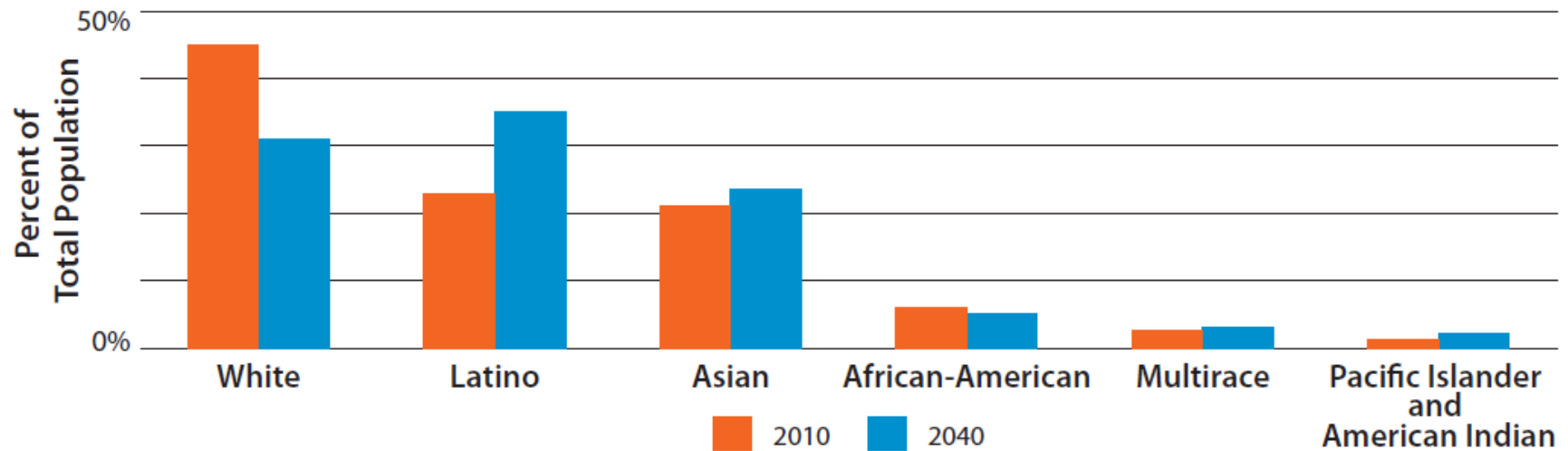
- Nearly 75% of new jobs in professional services, health and education, and leisure and hospitality
- For San Leandro:
 - *Lit San Leandro*
 - *Kaiser Medical Center*
 - *Westgate Mall*
 - *Bayfair Center*
 - *Downtown Tech Campus*



Population Trends

The region will grow significantly more diverse

Figure 1 Share of Population by Race and Ethnicity, 2010 and 2040



Sources: 2010 Census, California Department of Finance, ABAG

*** San Leandro represents one of the most diverse cities in the region**

Draft Plan Bay Area Growth Strategy

Regional Growth Strategy

Priority Development Areas

- Nearly 170 city nominated-areas in over 60 cities and counties
 - *Within Infill development area*
 - *Near existing/planned transit*
 - *Providing housing and/or jobs*
 - *Diversity of densities /population*
- Regional funding priority for PDAs
- San Leandro has 3 PDAs
 - *Downtown TOD & E. 14th Street*
 - *Bayfair Center TOD (Potential)*



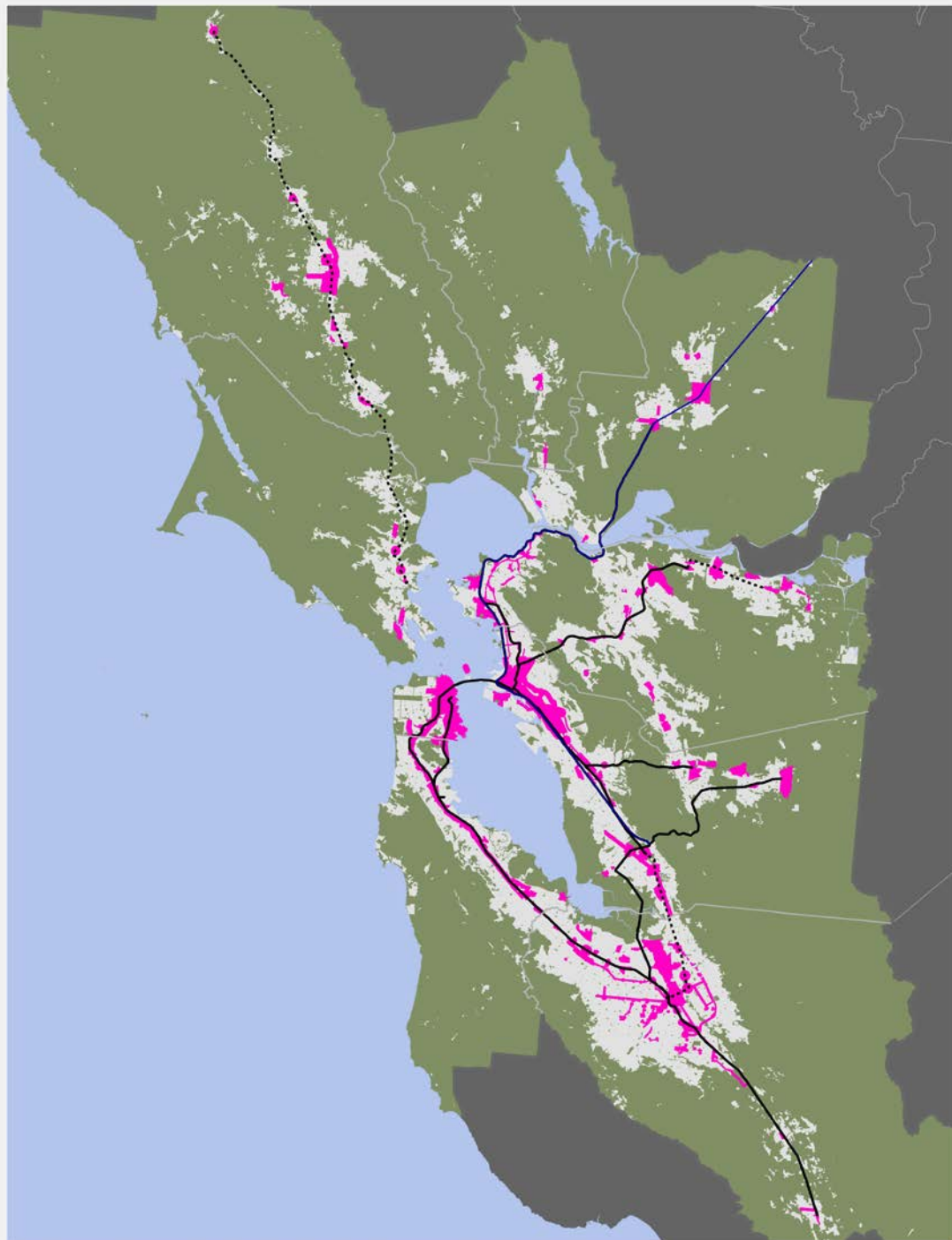
Regional Growth Strategy Focused Growth

 **Non-urbanized land**

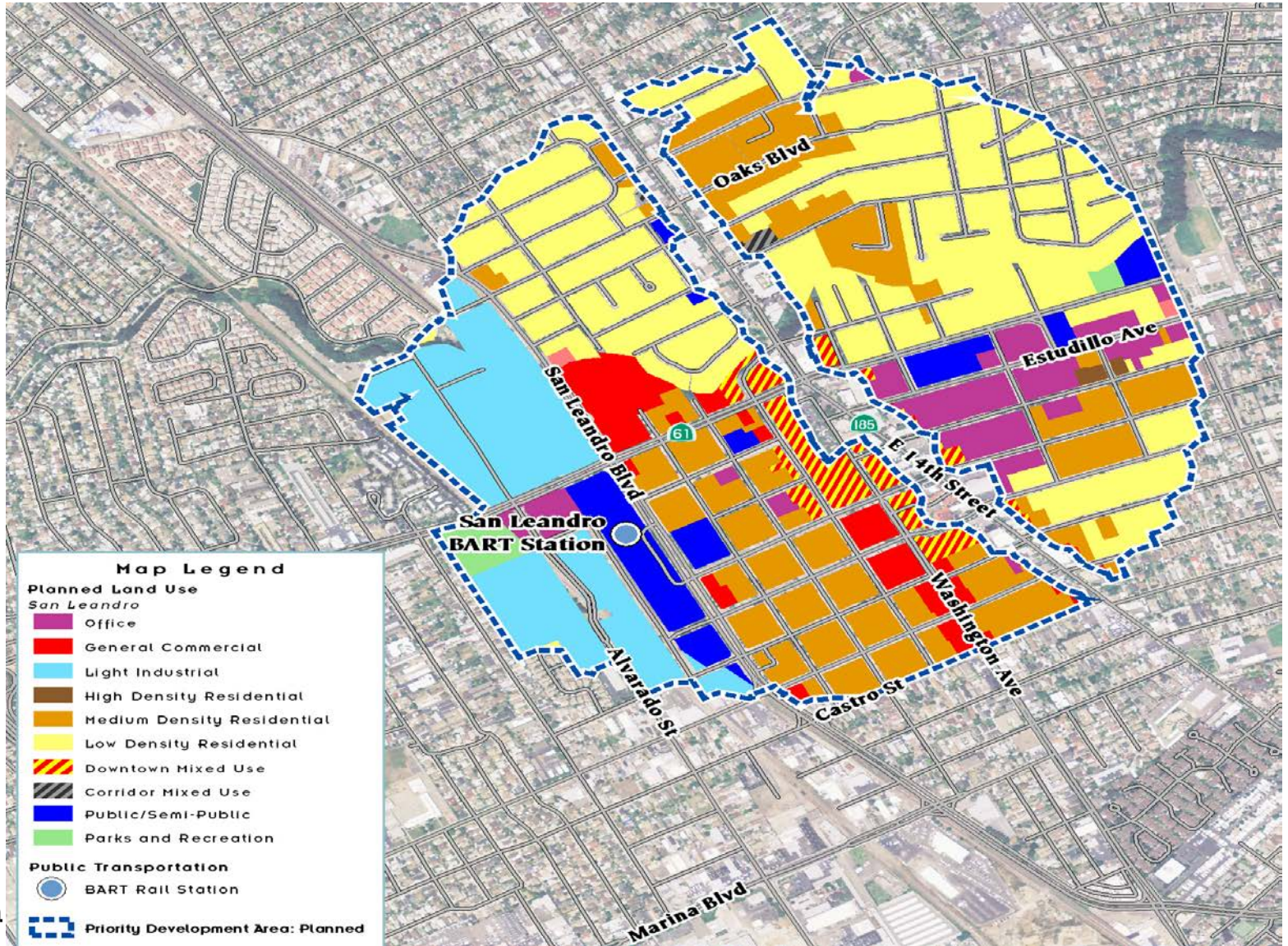
 **Urbanized land**

 **PDA**

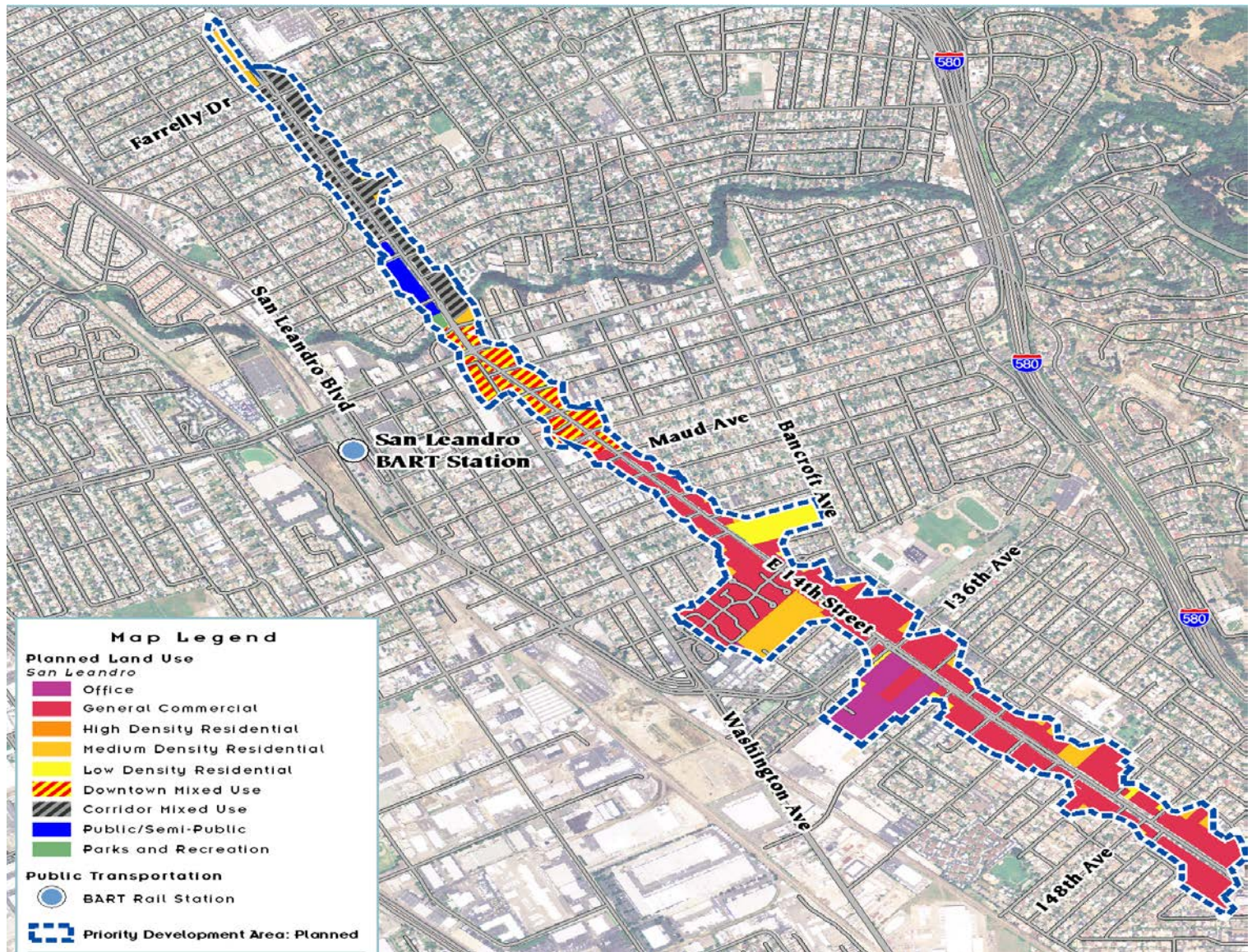
- Less than 5% of region's land
- Nearly 80% of new homes
- Over 60% of new jobs



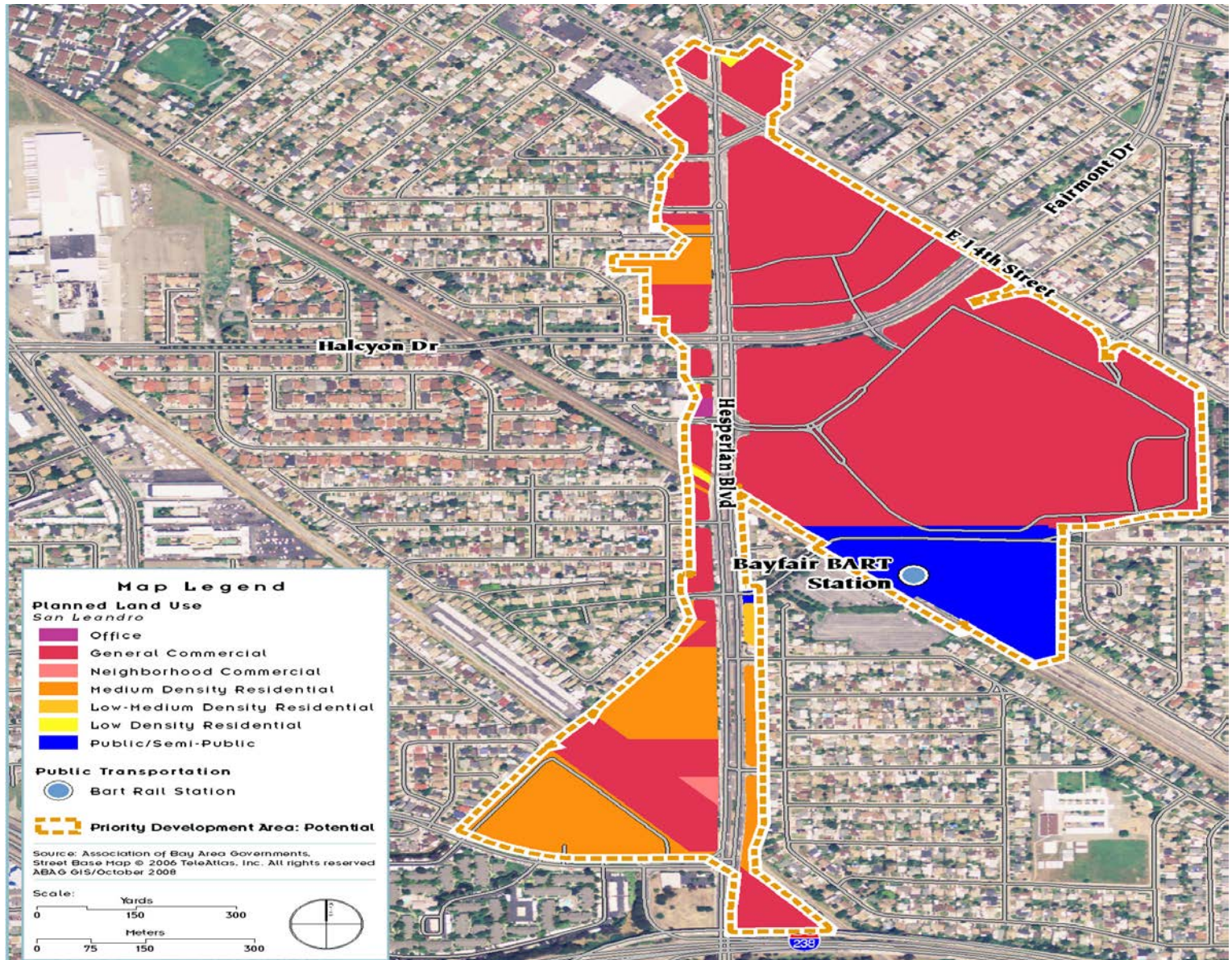
Downtown TOD PDA



East 14th Street PDA



Bayfair BART Station Potential PDA



Regional Growth Strategy

1. Focused growth in locally nominated Priority Development Areas
2. Retention of existing Urban Growth Boundaries and Limit Lines
3. Protection of Priority Conservation Areas
4. Single family residential neighborhoods and rural communities maintain existing scale/character
5. Local jurisdictions retain land use authority

Draft Plan Bay Area

Investments

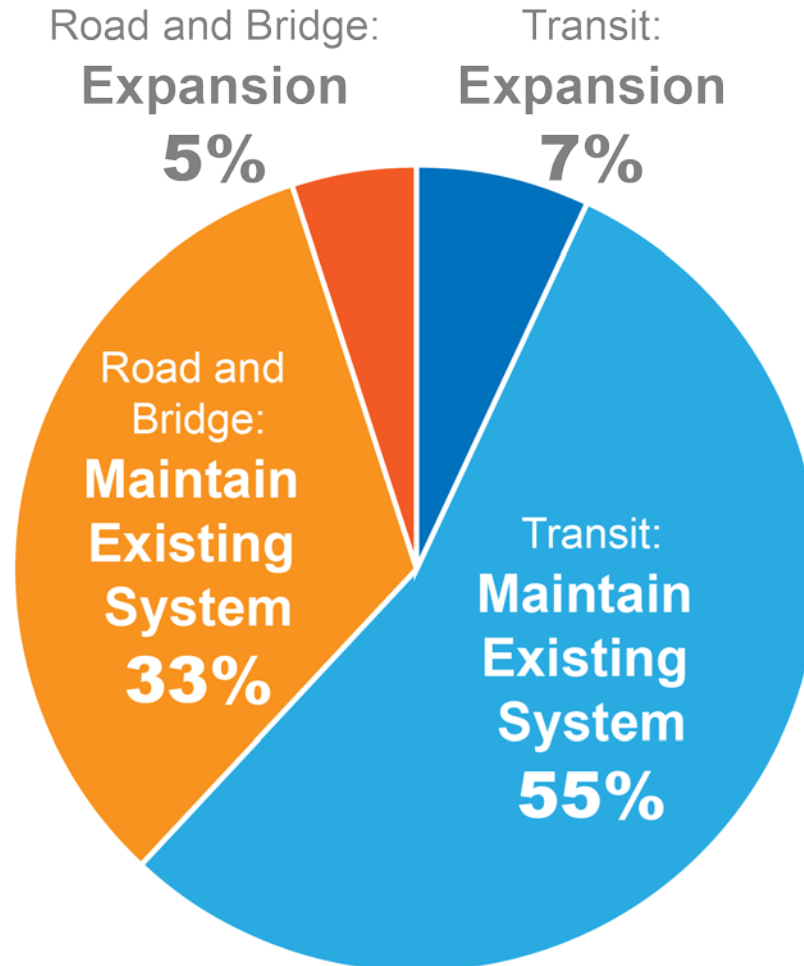
Six Investment Strategies

1. Maintain the Existing Transportation System
2. Support Focused Growth — OBAG
3. Build Next Generation Transit
4. Boost Freeway and Transit Efficiency
5. County Investment Priorities
6. Protect Our Climate

Draft Investment Summary

Total Transportation Investments

Total Revenue — \$289 Billion



Draft Plan Bay Area

A Plan To Build On

Next Steps

- **ABAG/MTC Board to adopt final Plan (July 2013)**
- **Plan Bay Area to be updated every 4 years**
 - *next planning cycle begins early 2015*
- **Preparation of State of the Region Report to assess progress in implementing Plan Bay Area**

Next Steps for San Leandro

- **Continue to implement key projects/plans such as Lit San Leandro, Kaiser Medical Center, Downtown TOD Strategy, and General Plan Update that further Plan Bay Area:**
 - *Build on local plans*
 - *Increase economic competitiveness*
 - *Stretch available dollars through smart investments*
 - *Create a vibrant economy and environment for future generations*
- **Further efforts to be a “complete community”**
- **Local success leads to regional competitiveness**

Future Issues to be Addressed By ABAG/MTC

Land Use

- **Support PDA Development With Locally Controlled Funding**
- **Modernize/reform CEQA**
- **Stabilize Federal Funding Levels**
- **“Defiscalize” Land Use Decision-making**

Transportation

- **Support Local Self-Help**
- **Seek Reliable Transportation Funding Levels and Flexibility**
- **Grow State Transportation Funding**
- **Include more comprehensive goods movement strategy**
- **Identify number of jobs within short walk to transit**