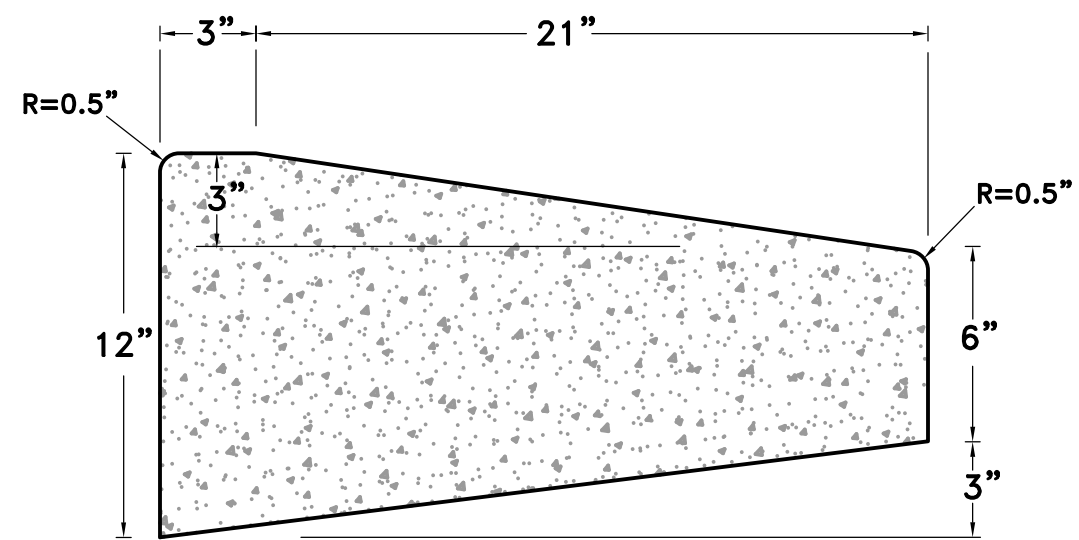


**DETAIL
ROLLED CONCRETE CURB & GUTTER**
NOT TO SCALE



**DETAIL
CONCRETE EDGE RESTRAINT**
NOT TO SCALE

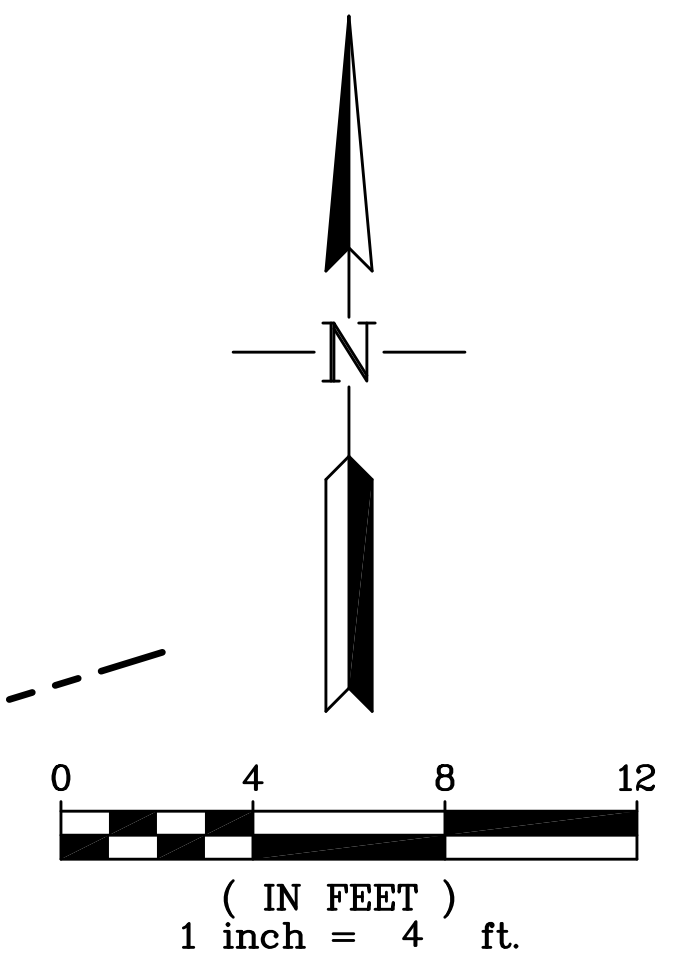
**LEWELLING
BOULEVARD**
(PUBLIC STREET)

LIVERMORE AMADOR VALLEY
WATER MANAGEMENT AGENCY
APN 080G-1325-001-3

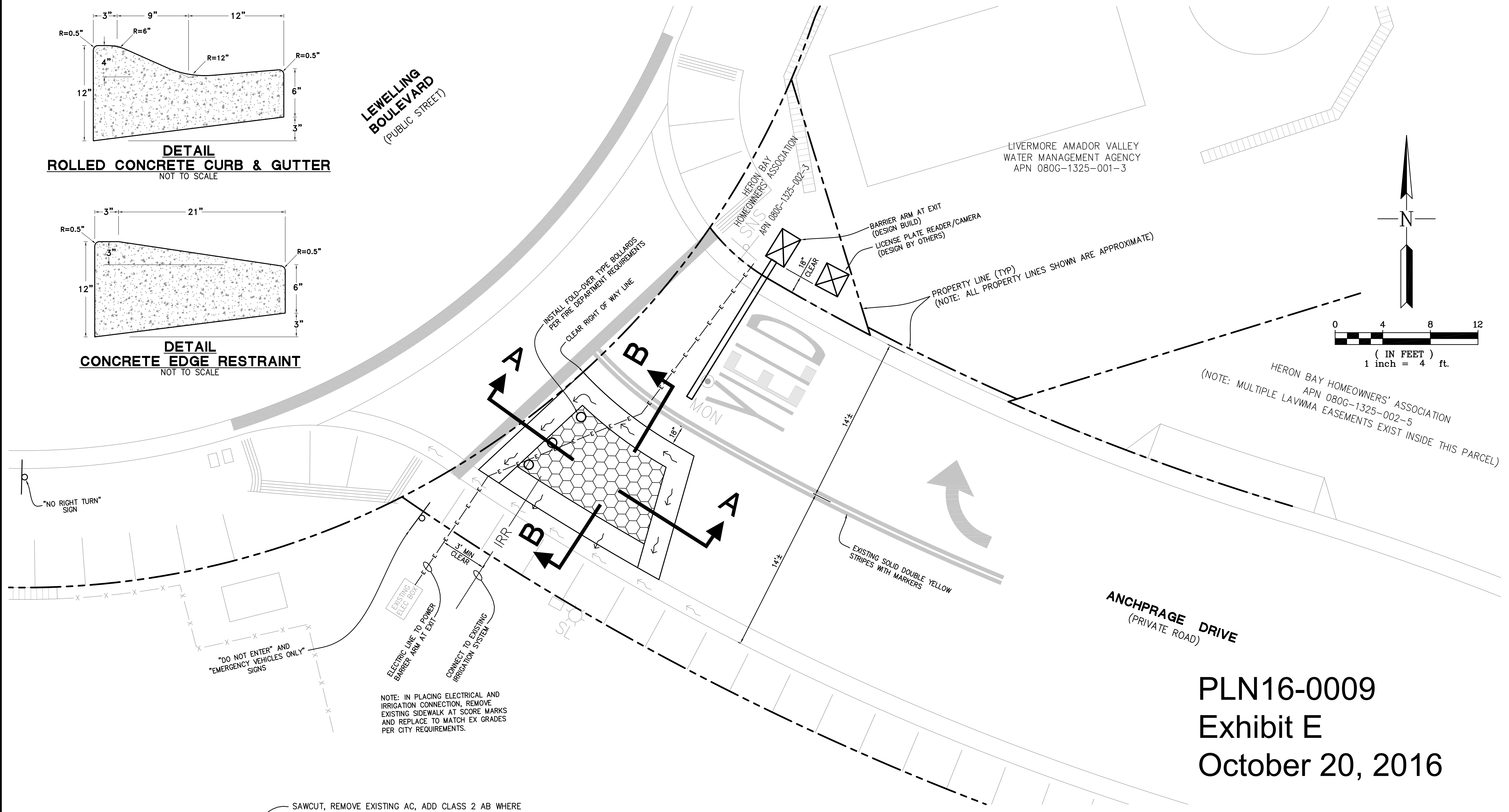
HERON BAY ASSOCIATION
HOMEOWNERS' ASSOCIATION
APN 080G-1325-002-3

BARRIER ARM AT EXIT
(DESIGN BUILD)
LICENSE PLATE READER/CAMERA
(DESIGN BY OTHERS)

PROPERTY LINE (TYP)
(NOTE: ALL PROPERTY LINES SHOWN ARE APPROXIMATE)



HERON BAY HOMEOWNERS' ASSOCIATION
APN 080G-1325-002-5
(NOTE: MULTIPLE LAVVMA EASEMENTS EXIST INSIDE THIS PARCEL)

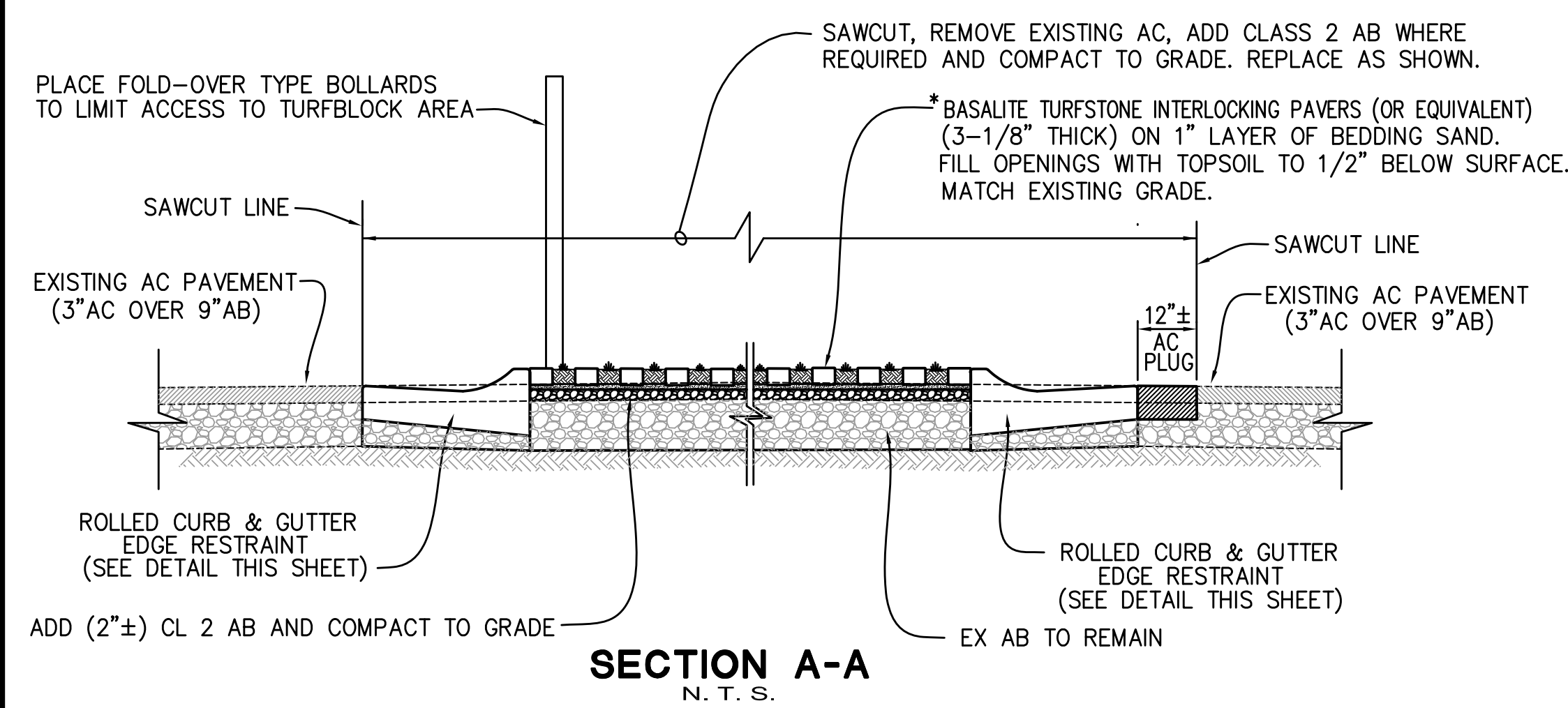


"NO RIGHT TURN"
SIGN

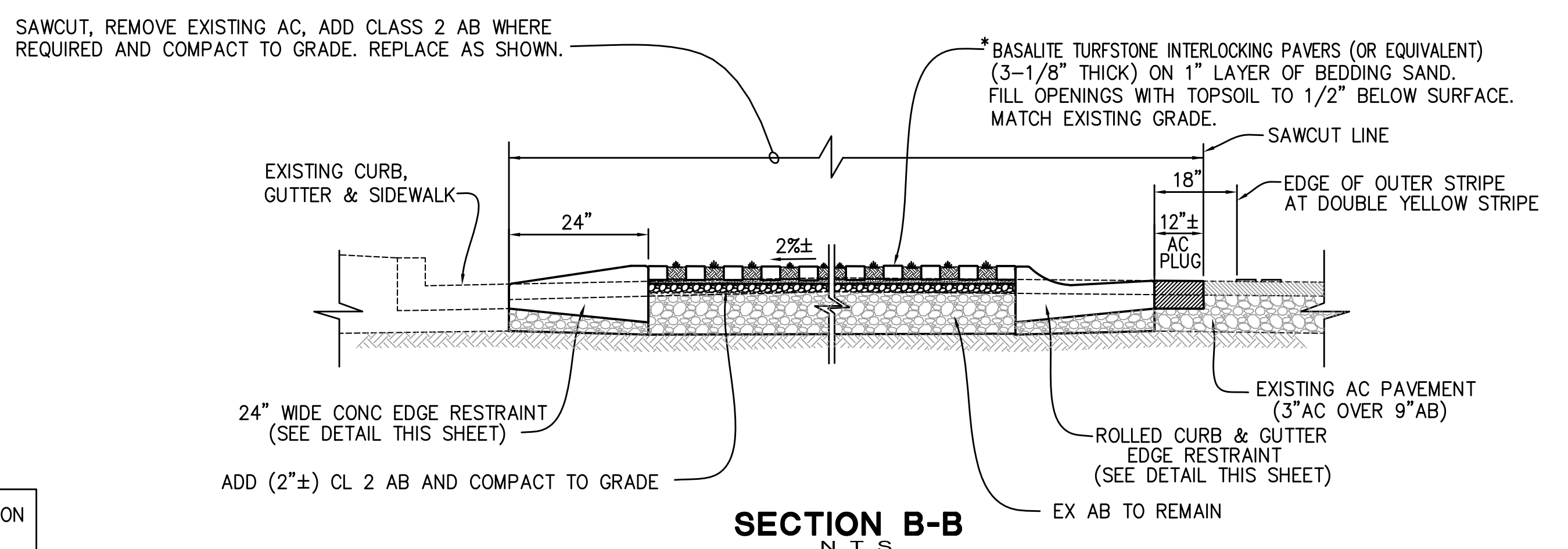
NOTE: IN PLACING ELECTRICAL AND
IRRIGATION CONNECTION, REMOVE
EXISTING SIDEWALK AT SCORE MARKS
AND REPLACE TO MATCH EX GRADES
PER CITY REQUIREMENTS.

ANCHPRAGE DRIVE
(PRIVATE ROAD)

PLN16-0009
Exhibit E
October 20, 2016



SECTION A-A
N. T. S.



SECTION B-B
N. T. S.

* CONTACT MANUFACTURER FOR PROPER INSTALLATION
MARK TAIARIOL (BASALITE) (408-422-9440)

REVISIONS	
SCALE	1" = 4'
DATE	06-03-16
DRAWN	PE
CHECKED	IN
JOB NO.	16070

SITE PLAN IMPROVEMENT
ENTRANCE IMPROVEMENTS
ANCHORAGE DRIVE @ LEWELLING BOULEVARD TURNAROUND
SAN LEANDRO ALAMEDA COUNTY CALIFORNIA

HUMANN COMPANY INC.
ENGINEERS SURVEYORS
1021 BROWN AVE
LA JOLLA, CA 92037
PH (925) 283-5000 FAX (925) 283-3576
humann@pcbell.net

SHEET 1
OF 1 SHEET
JOB NO. 16070

Z:\P\16070\SP\PLAN.dwg 6/27/2016 10:42:25 AM PJT