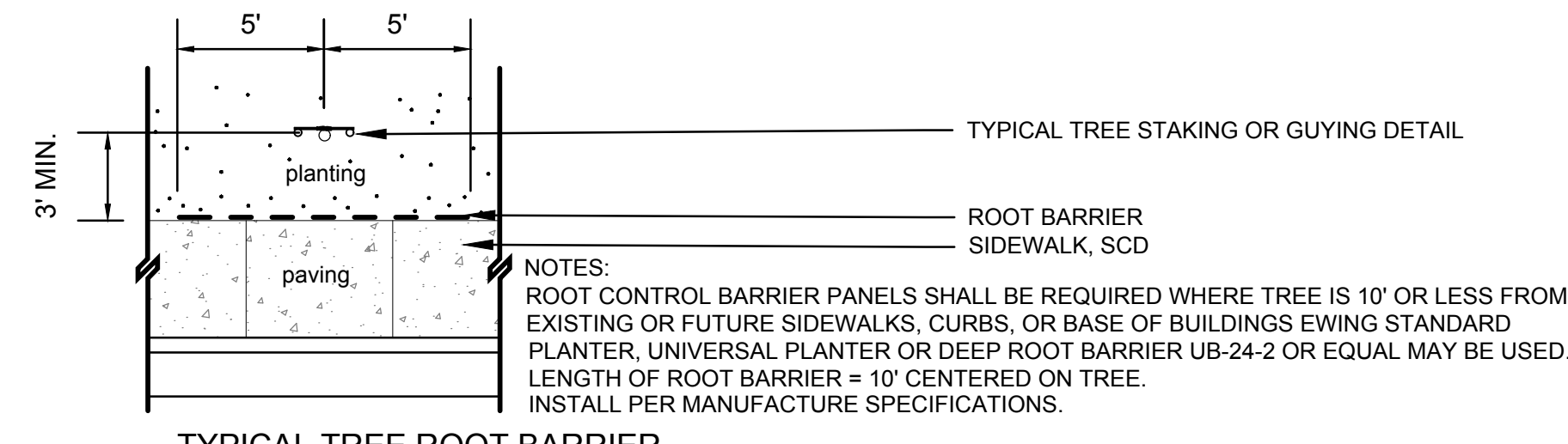
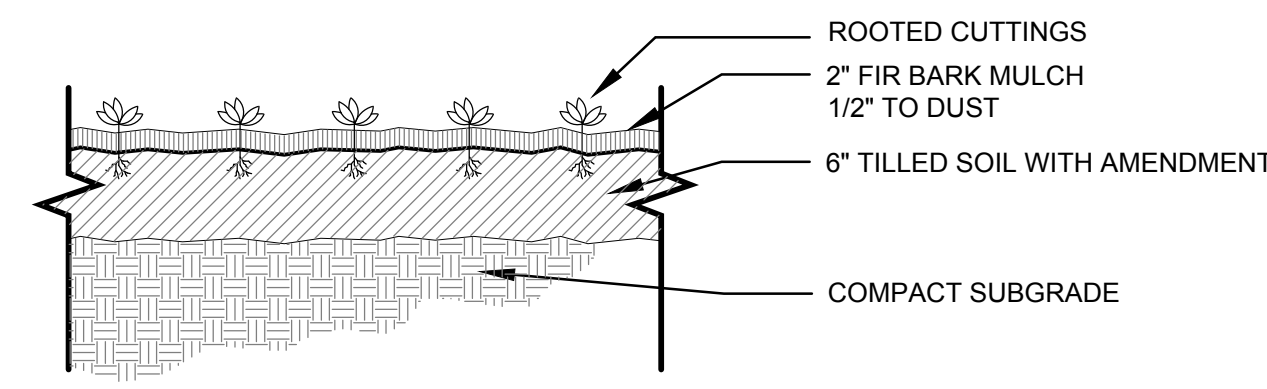


# EXHIBIT H - OO-RR

TMT ENTERPRISES, INC.



## #5 Lightweight Planter Mix™

TMT Enterprises' #5 Lightweight Planter Mix™ was developed in the mid 1970s to meet the ever-growing need for lightweight soil media that would meet the structural limitations of on-structure planters, while still providing a superior growth media for a wide range of plant materials.

#5 Lightweight Planter Mix is a homogenous blend of sphagnum peat moss, fine OMRI listed organic compost, scoria and washed horticultural sand with a complete pre-plant nutrient package thoroughly blended in. The typical saturated bulk density of this material is +/- 85-90 pounds per cubic foot, which is well below the typical engineer's requirement of 100 pounds per cubic foot.

All materials are precisely measured and mechanically blended on a clean, paved surface prior to delivery to site.

#5 Lightweight Planter Mix™ is far & away the most popular material in the Bay Area for on-structure applications. Many thousands of cubic yards are installed through the region in rooftop gardens, raised planters, containers, podium planters and more every year.

Please call for more detailed information.

Manufacturer: TMT Enterprises, Inc.  
1996 Oakland Road  
San Jose, CA 95131  
Phone: 408-432-9040  
Fax : 408-432-9429

1996 Oakland Road • San Jose, CA 95131  
Phone: 408-432-9040 • Fax: 408-432-9429

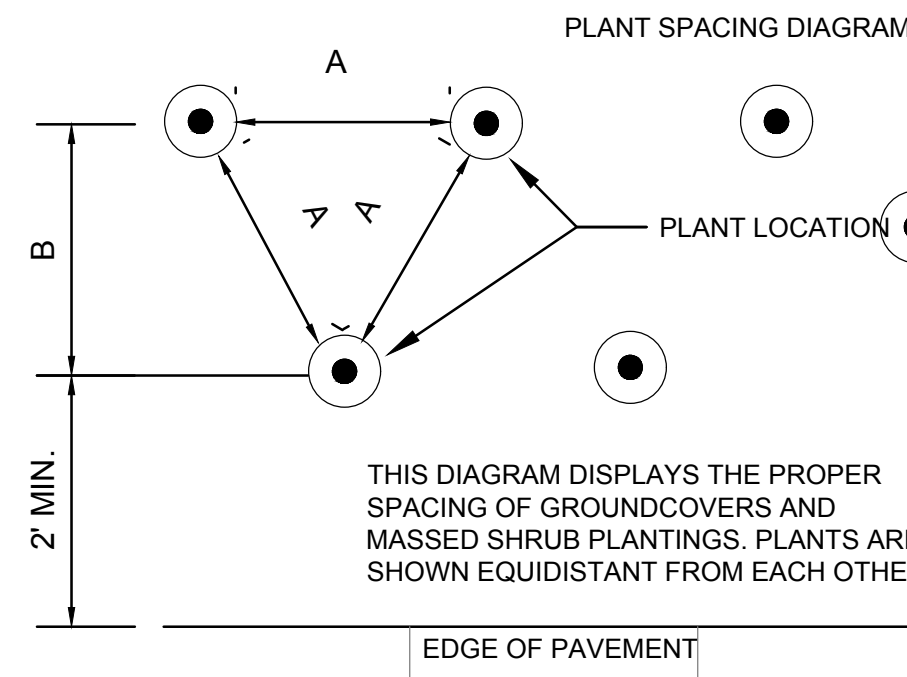
## 1 GROUNDCOVER PLANTING

PLANT QUANTITY CHART

A	B	# PLANTS / S.F.
6" O.C.	5.20"	4.60
8" O.C.	6.93"	2.60
9" O.C.	7.79"	1.78
12" O.C.	10.40"	1.15
15" O.C.	13.00"	0.74
18" O.C.	15.60"	0.51
24" O.C.	20.80"	0.29
30" O.C.	26.00"	0.18
36" O.C.	30.00"	0.12
48" O.C.	40.00"	0.17
72" O.C.	62.35"	0.04

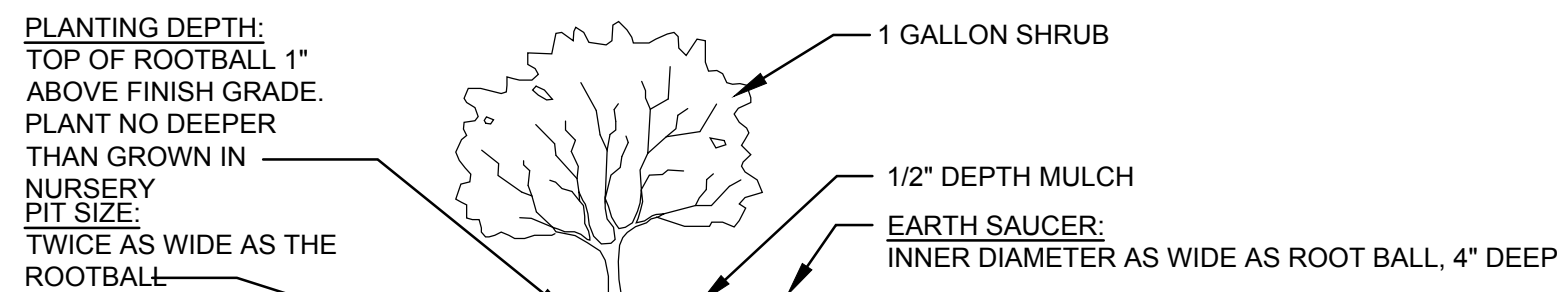
SEE GROUNDCOVER PLANT LIST FOR SPACING OF MASSES PLANTS. THIS DIAGRAM IS FOR INFORMATIONAL PURPOSES ONLY. CONTRACTOR IS RESPONSIBLE FOR ASSURING PROPER COVERAGE AND PLANT COUNTS BASED ON SPECIFIED SPACING.

TRIANGULAR SPACING  
(REFER TO PLANT LEGEND)

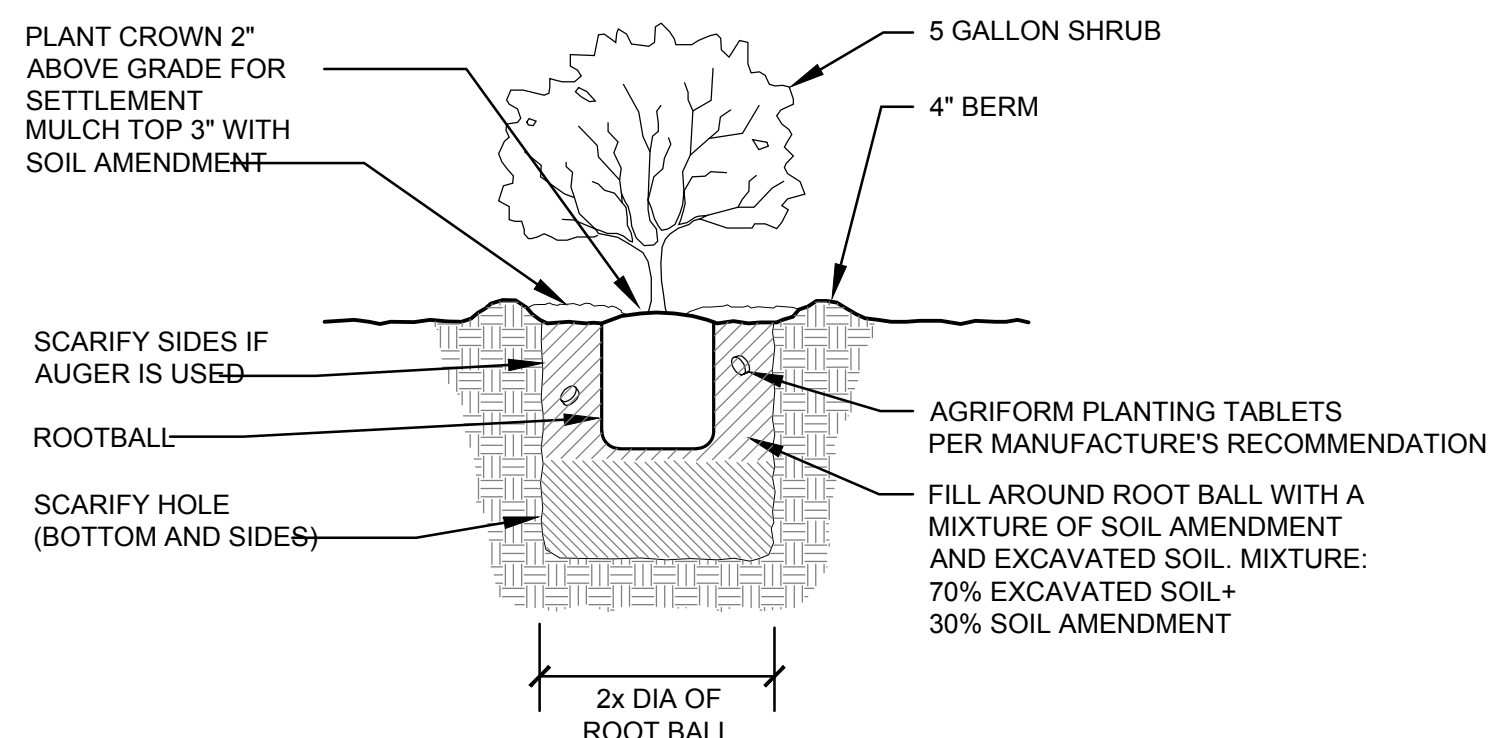


## 2 PLANT SPACING

N.T.S



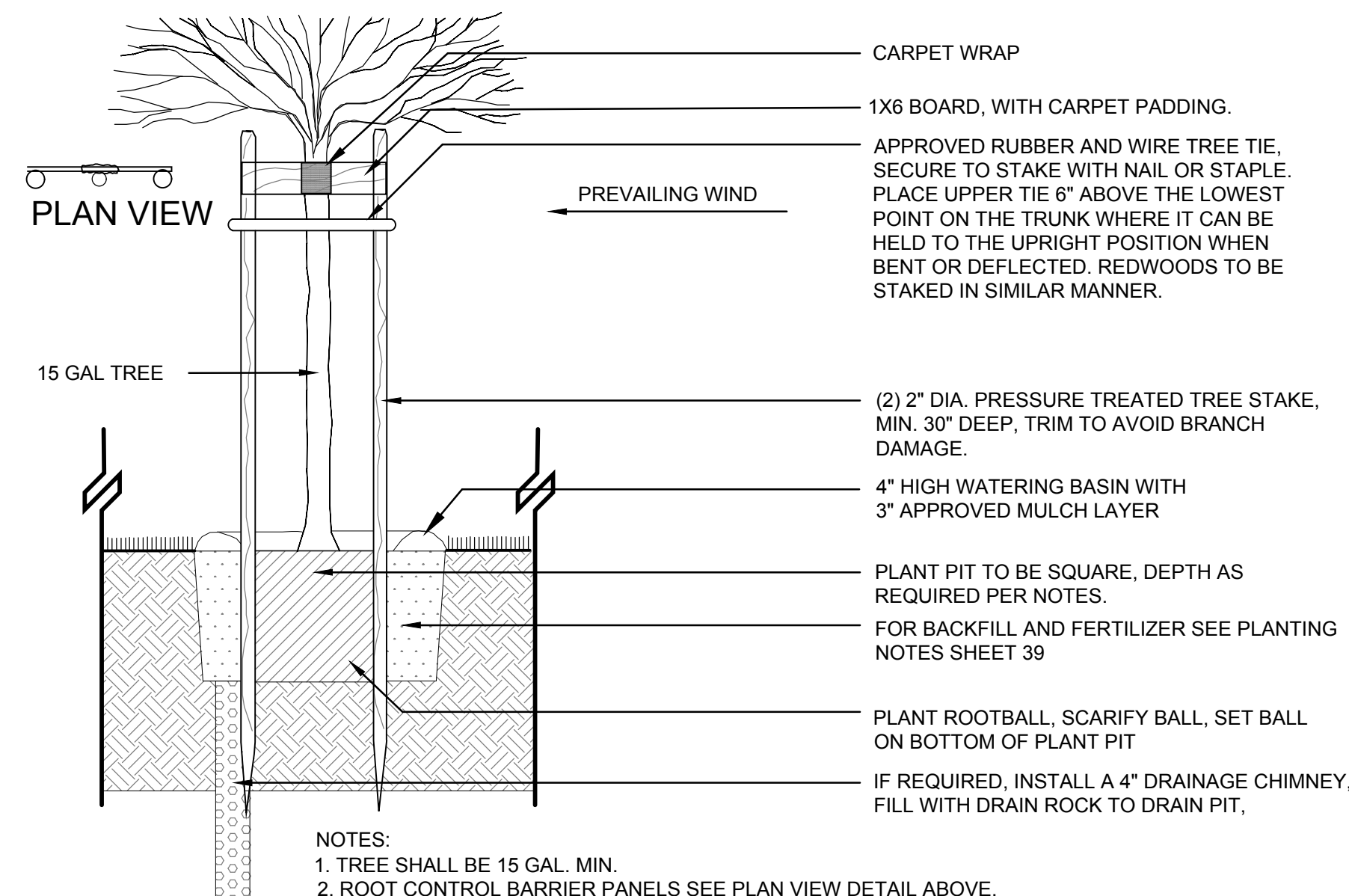
NOTES:  
1. PROVIDE CITY WITH PLANTING MIXTURE SPECIFICATIONS  
2. PLANTER AREA SHALL HAVE PRE-EMERGENT HERBICIDE APPLIED BEFORE PLANTING TO PREVENT GERMINATION OF WEED SEEDS.



## 3 SHRUB PLANTING DETAILS

## TYPICAL TREE ROOT BARRIER

SCALE: N.T.S.



## 4 TREE STAKING DETAIL (NOT STREET TREES)

N.T.S



ACANTHUS MOLLIS  
BEAR'S BREECH

## PLANTER 5



BLECHNUM SPICANT  
DEER FERN

## 6 LIGHTWEIGHT SOIL MIX



Agriform  
Planting Tablets

### Agriform® 20-10-5 Planting Tablets Plus Minors

SUGGESTED APPLICATION RATES

Application	Tree / Shrub Container Size					
	1 Gal	2 Gal	3 Gal	4 Gal	5 Gal	24" Box
Installation	1	2	3	4	5	10
Maintenance Rates for Established Plantings (Plant Height or Spread)	1" or less	1.5 to 2"	2.5 to 4"	4.5 to 6"	6 to 8"	8 to 12"
Size Grouping	1	2	3	4	5	6
Flat Grading	2	2	2	2	2	2

Application Rate for Well Rooted Liners (Quart to gallon size)

Application Rate for Small Ground Cover/Perennials (Quart size or smaller)

Tablets per plant

GUARANTEED ANALYSIS FL 1143

Total nitrogen (N)	20.00%
2.4% urea nitrogen	
4.0% other water soluble nitrogen*	
13.6% water insoluble nitrogen	
Available phosphate (P2O5)	10.00%
Soluble potash (K2O)	5.00%
Calcium (Ca)	3.00%
Magnesium (Mg) (Total)	0.70%
Sulfur (S) (Total)	2.00%
2.0% uncombined sulfur (S)	
Boron (B)	0.04%
Copper (Cu) (Total)	0.05%
0.05% water soluble copper (Cu)	
Iron (Fe) (Total)	0.50%
0.50% water soluble iron (Fe)	
Manganese (Mn) (Total)	0.07%
0.07% water soluble manganese (Mn)	
Zinc (Zn) (Total)	0.05%
0.05% water soluble zinc (Zn)	

Derived from urea, methylene urea, calcium phosphate, potassium sulfate, calcium sulfate, magnesium oxide, sodium borate, copper sulfate, iron sulfate, manganese sulfate and zinc sulfate.

\* Contains 3.2% slowly available methyleneurea and dimethylammonium nitrogen.

QUESTIONS?  
If you have any questions regarding the use of this product, feel free to call TOLL FREE 1-800-492-8255 or visit [www.scotts.com](http://www.scotts.com).



© 2009 The Scotts Company LLC, Maryville, Ohio 43041. World Right Reserved.  
Printed in U.S.A.

15108  
Revised 5/09

## 7 FERTILIZER

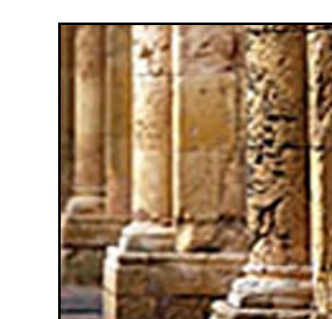
# PLANTING DETAILS PRELIMINARY LANDSCAPE PLAN

268 Parrott Street

268 Parrott Street  
San Leandro, California

Date: January 4, 2019

Job: 18-171



LEVESQUE DESIGN

1414 BAY STREET, SUITE 100  
ALAMEDA, CALIFORNIA 94501  
(510) 521 6700

L-6.5

CONSULTANT

HALE HUNT JONES ARCHITECTS

ARCHITECT

OWNER / DEVELOPER

PROJECT

TRASH ROOM LAYOUT

DRAWING TITLE

PROJECT NO. DRAWING NO.

DRAWN MC

APPROVED SB

DATE 10/02/18

SCALE NTS

268 PARROTT AVE. SAN LEANDRO, CA

T.01

**SHEET NOTES:**

**RESIDENTIAL TRASH COLLECTION ROOM: LEVEL 1**

- TRASH COLLECTION ROOM IS PART OF 2HR FIRE-RATED TRASH CHUTE SHAFT - RESTRICTED ACCESS.
- FLOOR SHALL BE FINISHED WITH ELASTO-DECK 6001 AL-HT DECK COATING. FLOOR TO HAVE MINIMAL SLOPE AND FLOOR DRAIN. FLOOR LEVEL UNDER COMPACTOR.
- WALLS SHALL BE FINISHED WITH WASHABLE WATERPROOF SURFACE SUCH AS FRP OR HIGH-GLOSS ENAMEL PAINT, 8'-0" AFF.
- INSTALL WALL PROTECTION: 12"Hx6"W CONCRETE CURB AT BASE OF ALL NON-CONCRETE WALLS.
- 6'-0" ROLL-UP DOOR AND 3'-0" ACCESS DOOR.
- ROOM SHALL BE MECHANICALLY VENTILATED WITH (1) CFM/FT PER 2016 CBC.
- (2) 30"Ø GRAVITY CHUTES WITH FOR WASTE AND RECYCLING. PROVIDE 2CY CONTAINERS FOR DISPOSAL.
- CHUTE SHALL TERMINATE AT 5'-9" AFF.
- PROVIDE (1)18x18 SIDE HINGED, AUTOMATIC OPENING THRU-WALL INTAKE DOOR INTO 64 GAL CART FOR COMPOST. SEE DETAIL 2/T2.0.
- MCP: CHUTE MASTER CONTROL PANEL SHALL BE WALL-MOUNTED 60" AFF. MUST ALLOW LOCK DOWN OF CHUTE INTAKES FOR EXCHANGING CONTAINERS AND WASHING CHUTES.
- AC: 2HP CHUTE AIR COMPRESSOR SHALL BE FLOOR-MOUNTED.
- OC: ODOR CONTROL UNIT SHALL BE WALL-MOUNTED 60" AFF.
- HB: HOT AND COLD HOSE BIBB SHALL BE WALL-MOUNTED 60" AFF.
- PROVIDE ELECTRIC PALLET TRUCK FOR TRANSFERRING CONTAINERS. 4000lb CAPACITY; TURNING RADIUS: 45.5'.
- CHUTE DISCHARGE DOOR: TYPE-A, HORIZONTALLY INSULATED SLIDING-STEEL DOOR, HELD OPEN BY 165° F FUSIBLE LINK.
- 120V, 15A SERVICE OUTLET REQUIRED FOR ALL EQUIPMENT (U.O.N.).

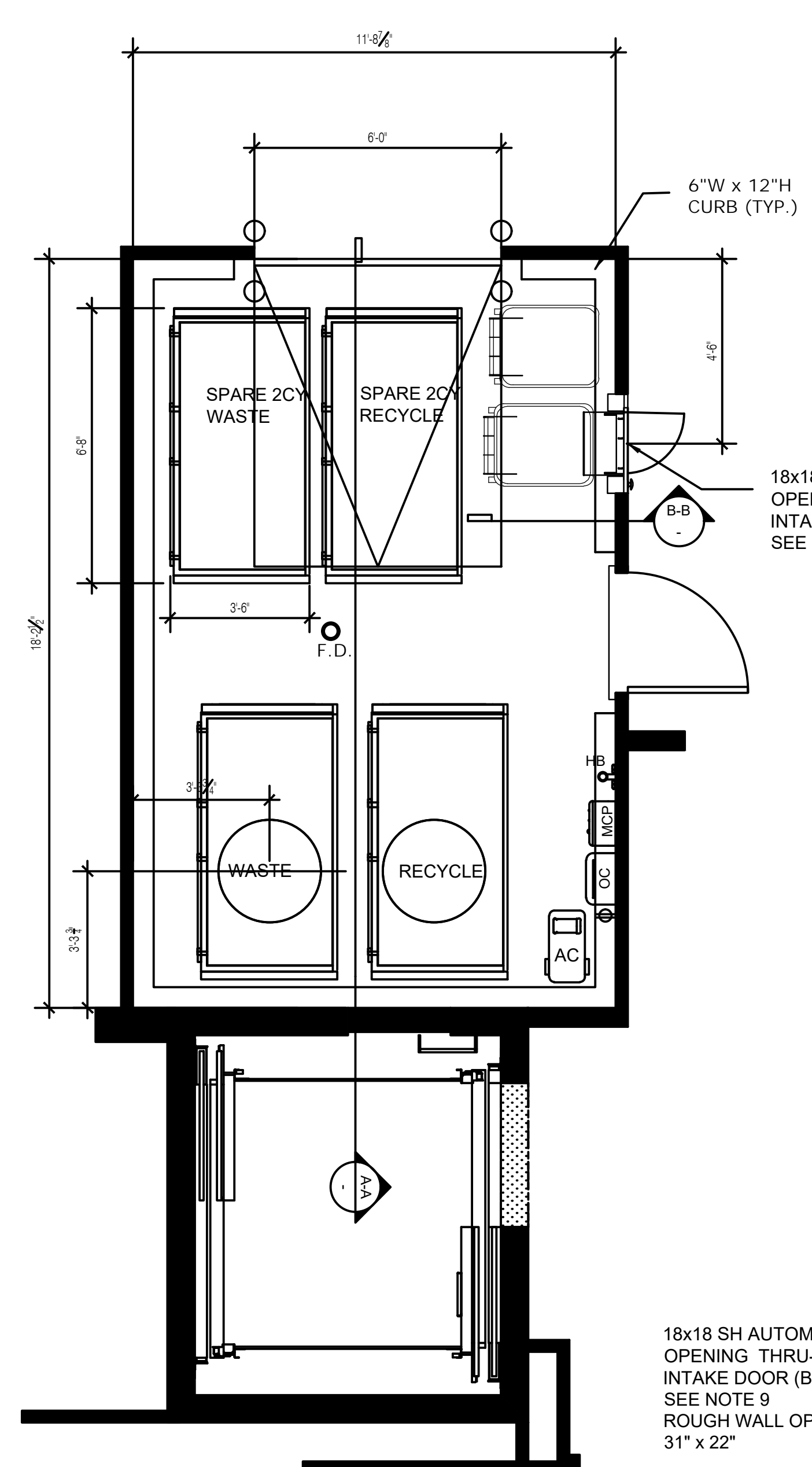
**CHUTE INTAKE VESTIBULES: LEVELS 2 - 4**

- CHUTE INTAKE VESTIBULES SHALL BE 1HR FIRE-RATED WITH 1HR FIRE-RATED DOOR; 5'-0" MIN REQUIRED PER ADA STANDARDS - RESIDENTIAL ACCESS. PROVIDE 15x18 BOTTOM HINGED, ELECTRICALLY INTERLOCKED, AUTOMATIC OPENING INTAKE DOORS TO DISPOSE TRASH AND RECYCLING INTO 2CY LOOSE CONTAINERS. (6) TOTAL. SEE DETAIL 1/T2.0.
- CHUTE SHAFT SHALL NOT BE ERCTED UNTIL CHUTE HAS BEEN INSTALLED. FOR SOUND PROOFING PURPOSES, DOUBLE STUD-WALLS ARE REQUIRED ADJACENT TO OCCUPIED SPACES. INTERIOR OF SHAFT SHALL BE TAPED TO PREVENT ODOROUS AIR LEAKING INTO OCCUPIED SPACES.

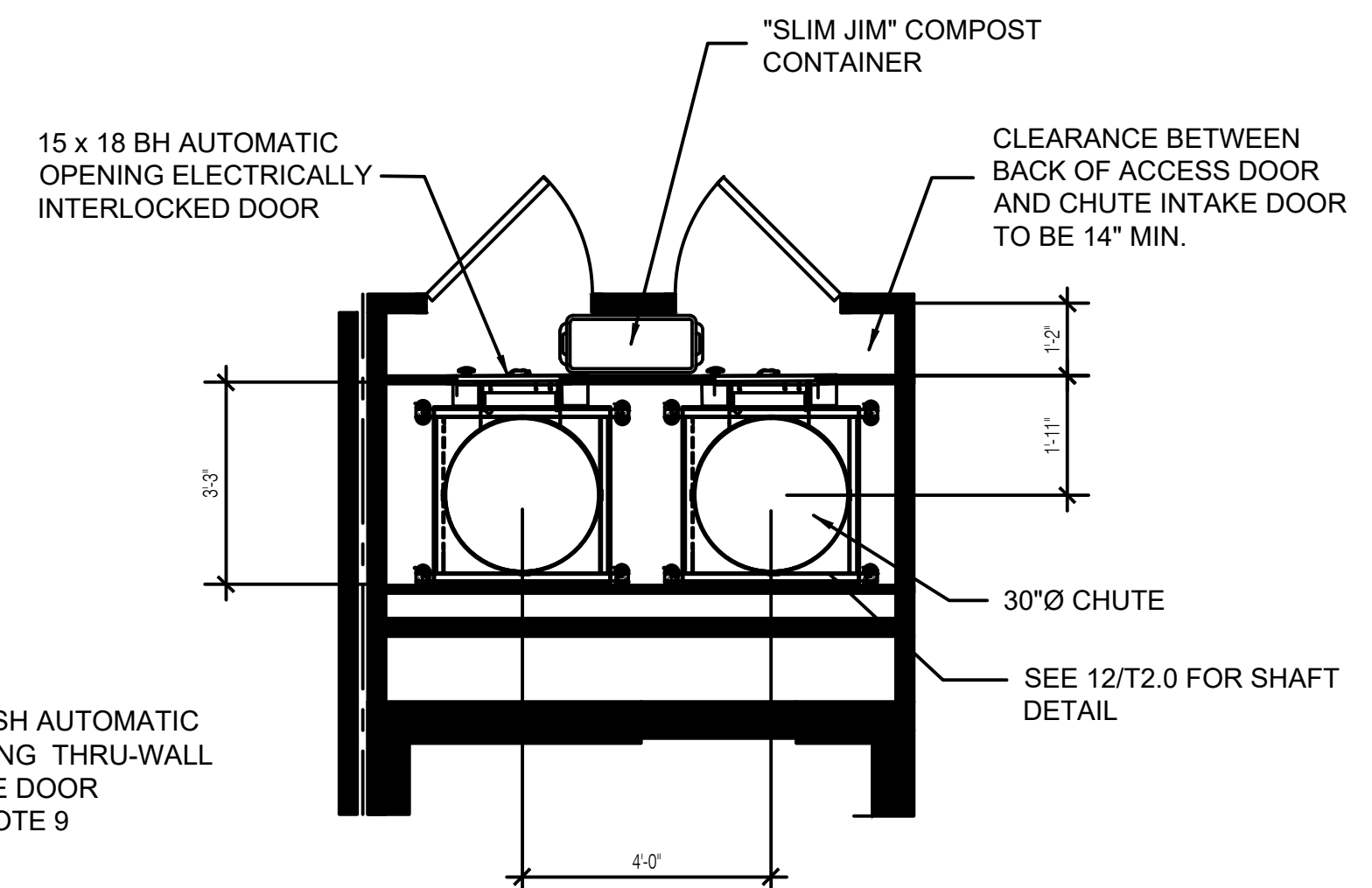
**GENERAL NOTES:**

- THIS DRAWINGS IS NOT DRAWN TO SCALE.
- ANY DESIGNS OR DESIGN SOLUTIONS PRESENTED IN THIS DRAWING OR SPECIFICATION, WHICH ARE DIRECT OR IMPLIED, INCLUDING NARRATIVES, DRAWINGS, OR DIAGRAMS, ARE HEREBY CLARIFIED AS EXAMPLES AND SHALL NOT BE CONSIDERED COMPLETE DESIGNS OR DESIGNS SUITABLE FOR CONSTRUCTION. OMISSIONS FROM DRAWINGS OR SPECIFICATIONS, OR THE INACCURATE DESCRIPTION OF DETAILS OF WORK, WHICH ARE MANIFESTLY NECESSARY TO CARRY OUT THE INTENT OF THE DRAWINGS AND SPECIFICATIONS, OR WHICH ARE CUSTOMARILY PERFORMED, SHALL NOT RELIEVE THE CONTRACTOR FROM PERFORMING SUCH OMITTED OR INACCURATELY DESCRIBED DETAILS OF THE WORK. WORK SHALL BE PERFORMED AS IF FULLY AND CORRECTLY SET FORTH AND DESCRIBED IN THE DRAWINGS AND SPECIFICATIONS.
- CONTRACTOR SHALL FIELD VERIFY ALL DIMENSIONS AND CONDITIONS PRIOR TO START OF CONSTRUCTION. THE ARCHITECT SHALL BE NOTIFIED IMMEDIATELY OF ALL EXISTING FIELD CONDITIONS AND ANY DISCREPANCIES OR INCONSISTENCIES.

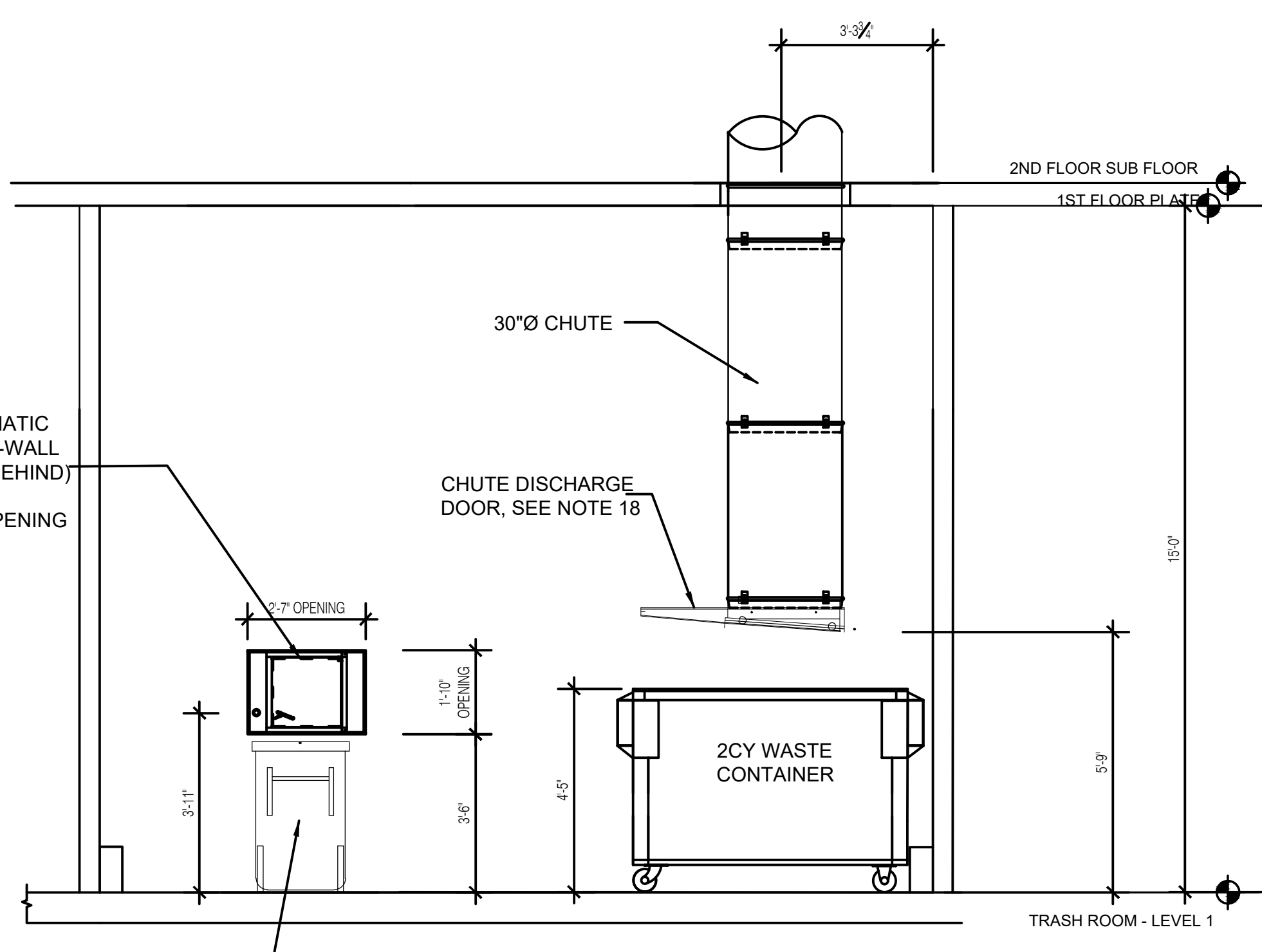
PROJECTED COLLECTION SCHEDULE			
WASTE	TWICE / WEEK	1 x 2 CY LOOSE	1
RECYCLING	TWICE/ WEEK	1 x 2 CY LOOSE	1
COMPOST	ONCE / WK	1 x 64 GAL (LOOSE)	1



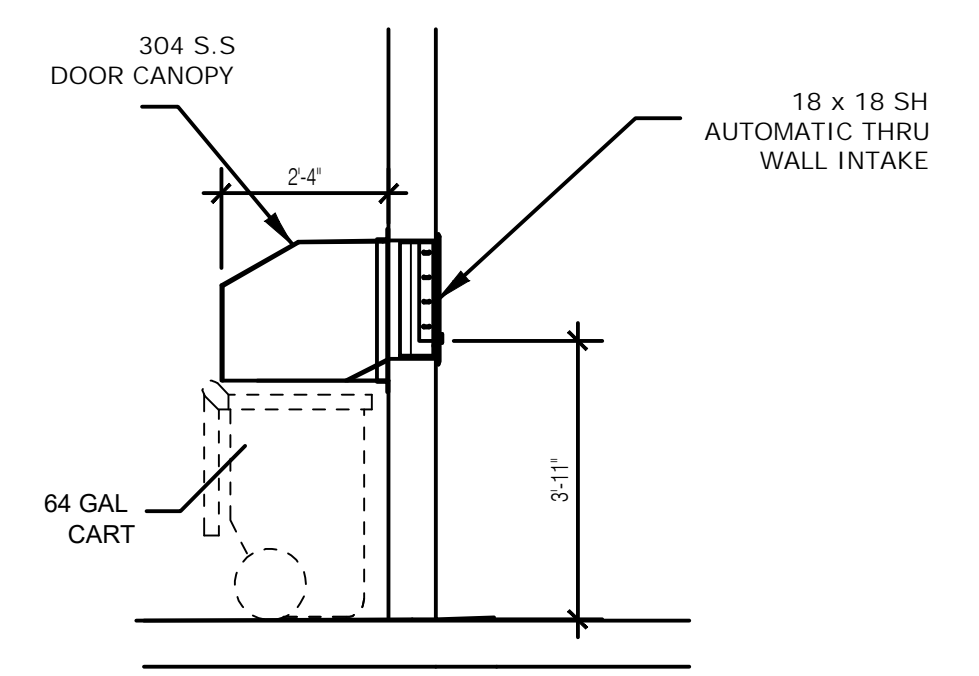
**TRASH ROOM PLAN**  
LEVEL 1



**CHUTE VESTIBULE**  
LEVELS 2 - 4



**SECTION A - A**



**SECTION B - B**

CONSULTANT

HALE HUNT JONES ARCHITECTS

ARCHITECT

OWNER / DEVELOPER

NO.	DATE	ISSUE / REVISION	ISSUED BY

268 PARROTT AVE.  
SAN LEANDRO, CA

PROJECT

TRASH CONTAINER  
STAGING

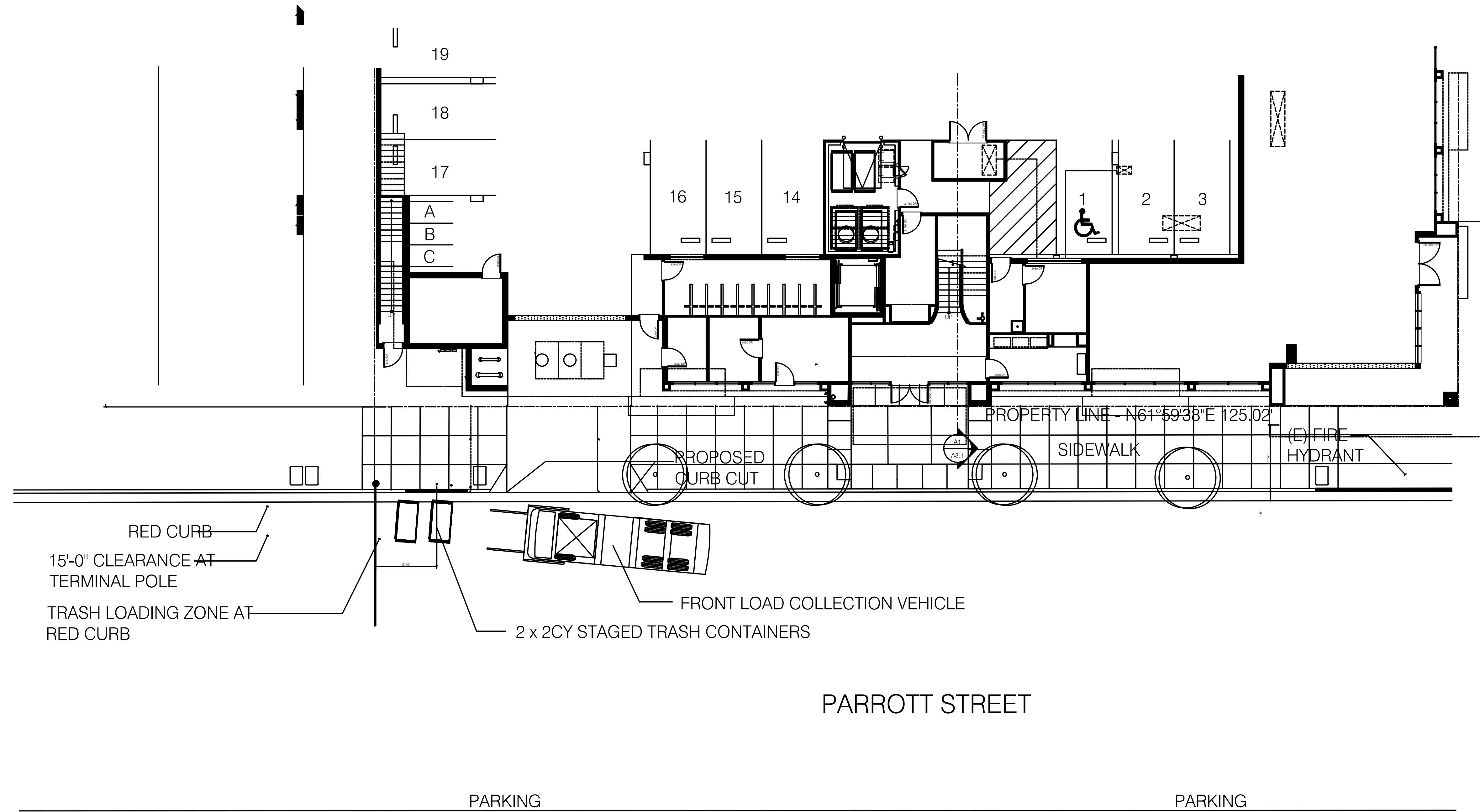
DRAWING TITLE

PROJECT NO.

DRAWN MC  
APPROVED SB  
DATE 10/02/18  
SCALE NTS

DRAWING NO.

T.02





**AMERICAN TRASH MANAGEMENT**

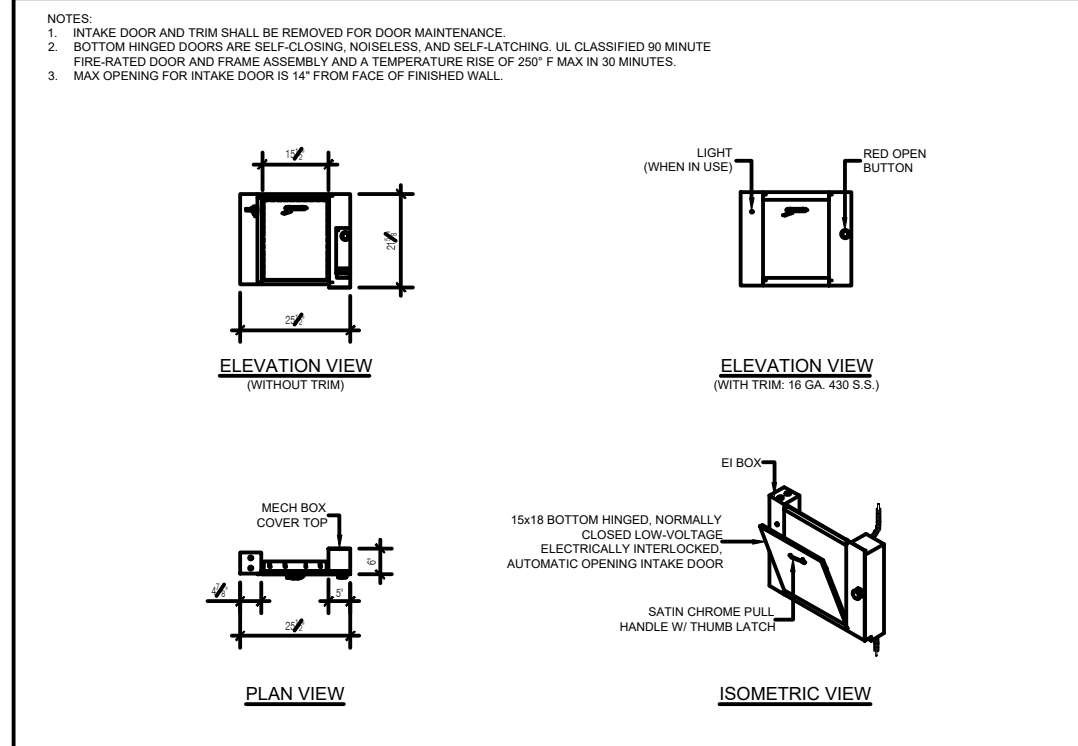
AMERICAN TRASH MANAGEMENT  
1900 POWELL STREET, SUITE 890  
EMERYVILLE, CALIFORNIA 94608  
P: 415.292.5400  
F: 415.292.5410  
SBROWN@TRASHMANAGE.COM

CONSULTANT

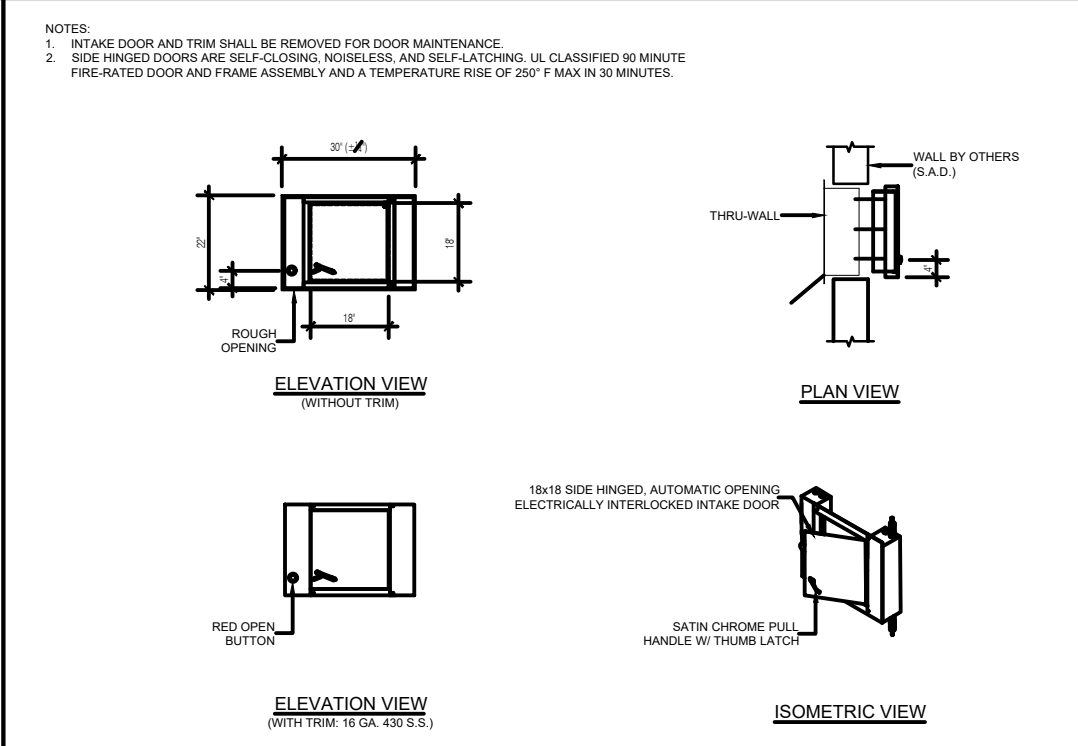
HALE HUNT JONES  
ARCHITECTS

ARCHITECT

OWNER / DEVELOPER



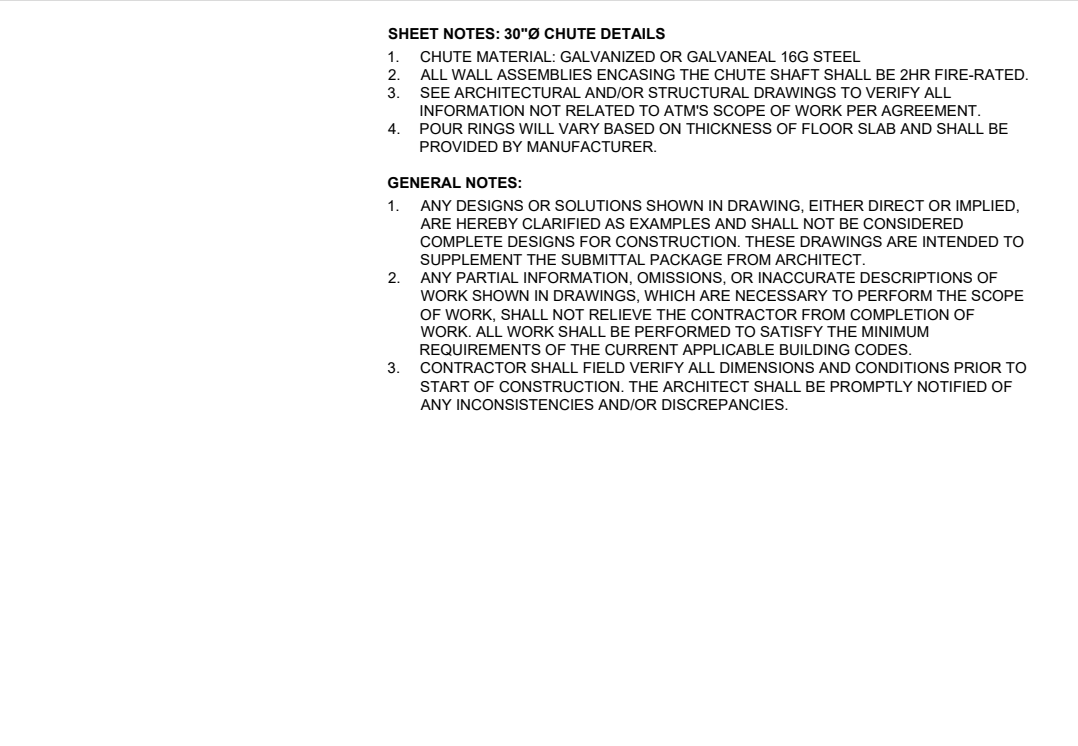
1 CHUTE INTAKE DOOR



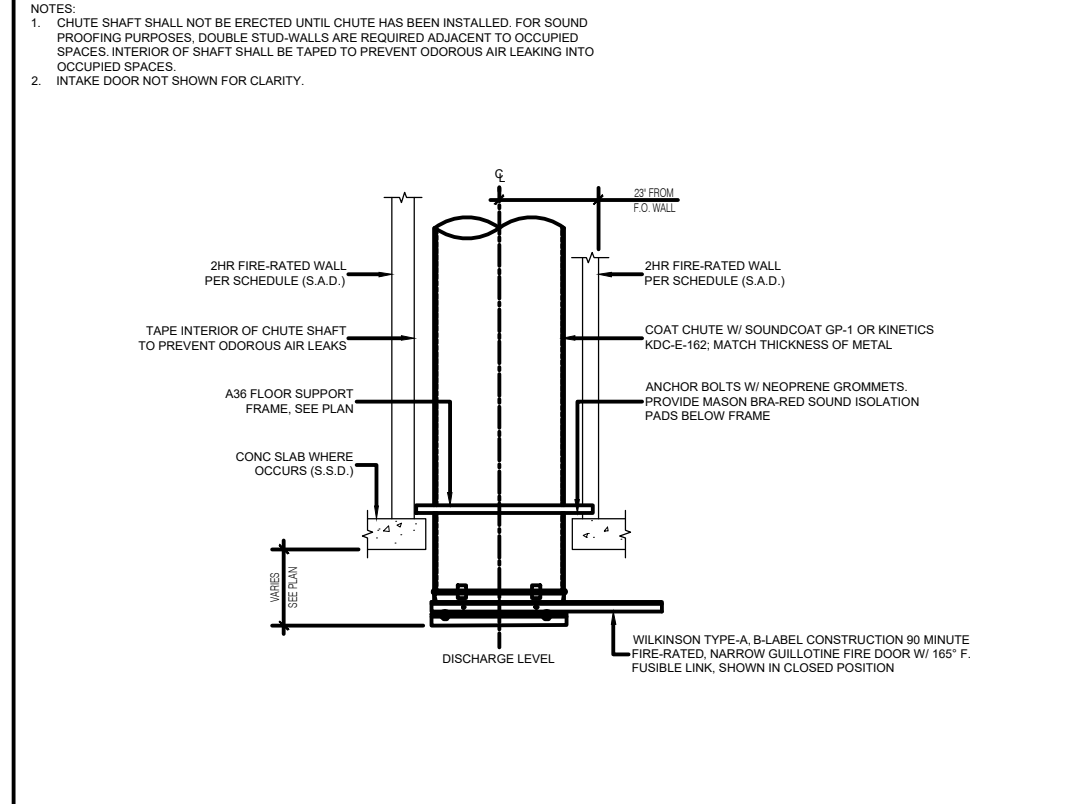
2 THRU-WALL INTAKE DOOR - 18 x 18 SH LEVEL 01



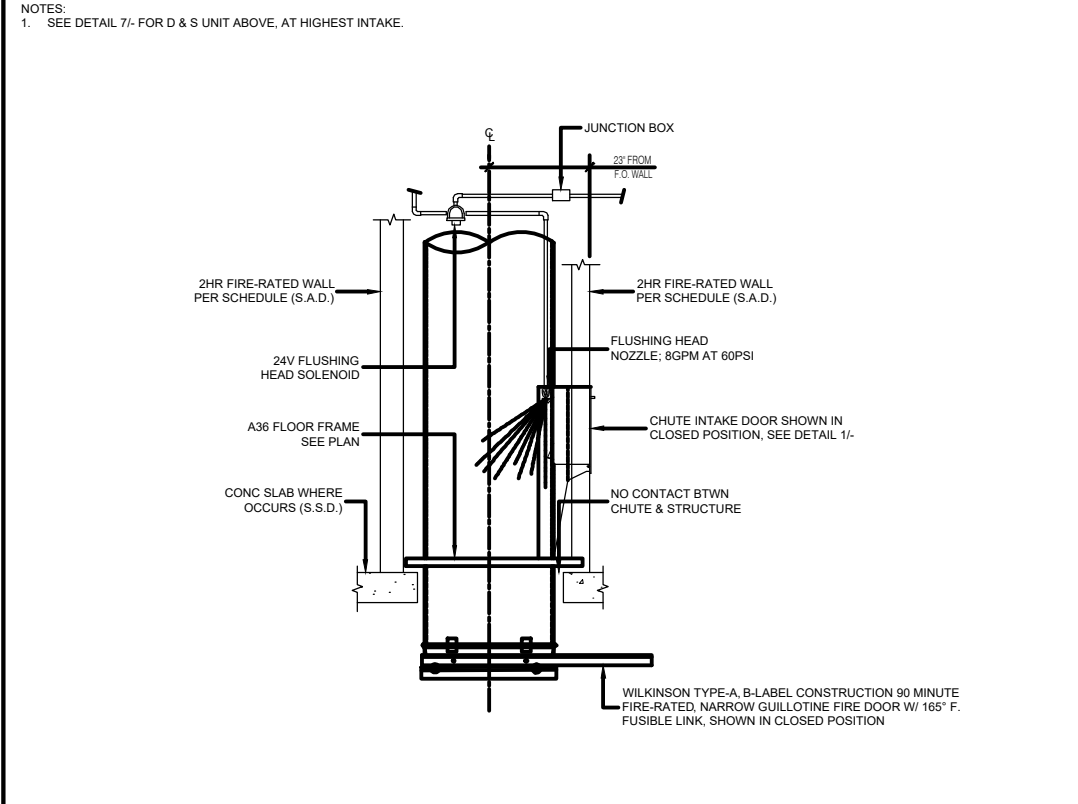
7 TRASH SANITATION UNIT AT HIGHEST INTAKE



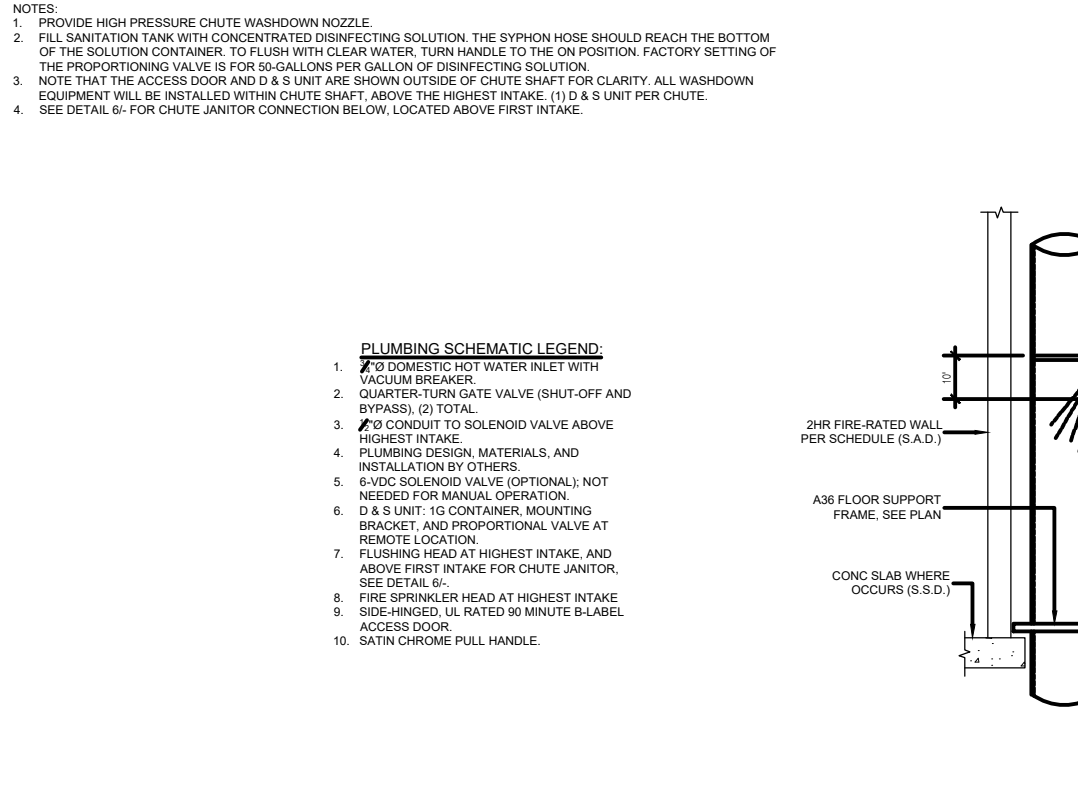
7 TRASH SANITATION UNIT AT HIGHEST INTAKE



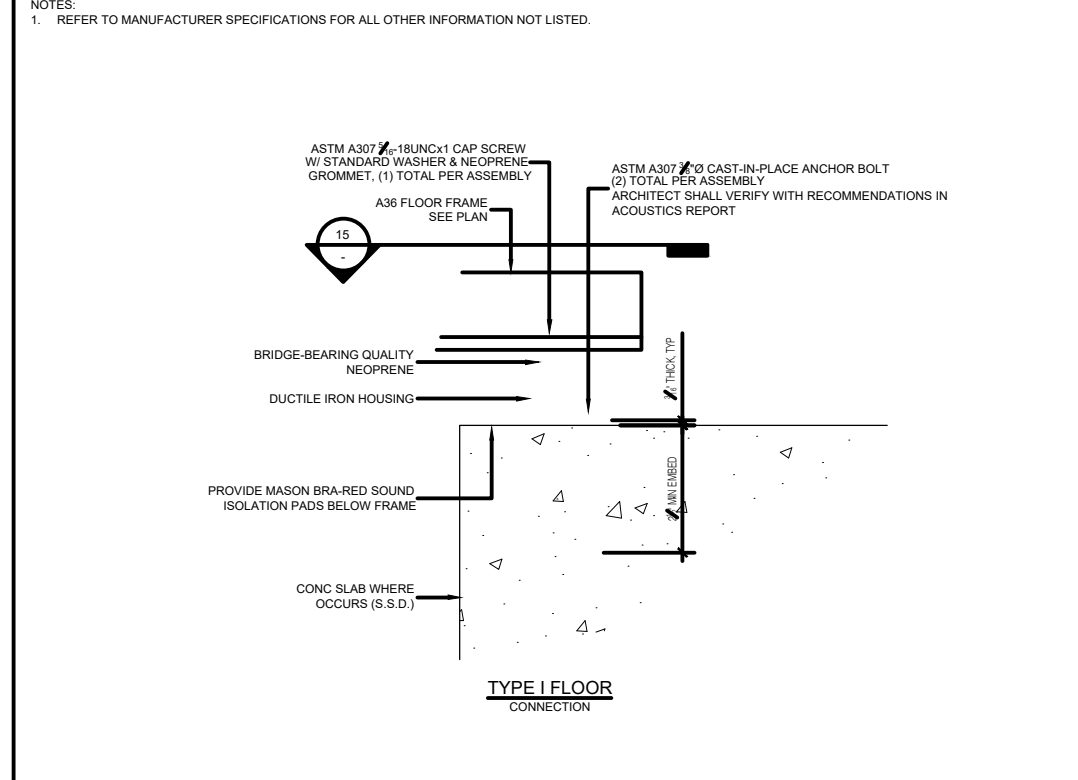
5 CHUTE AIR AND SOUND ISOLATION



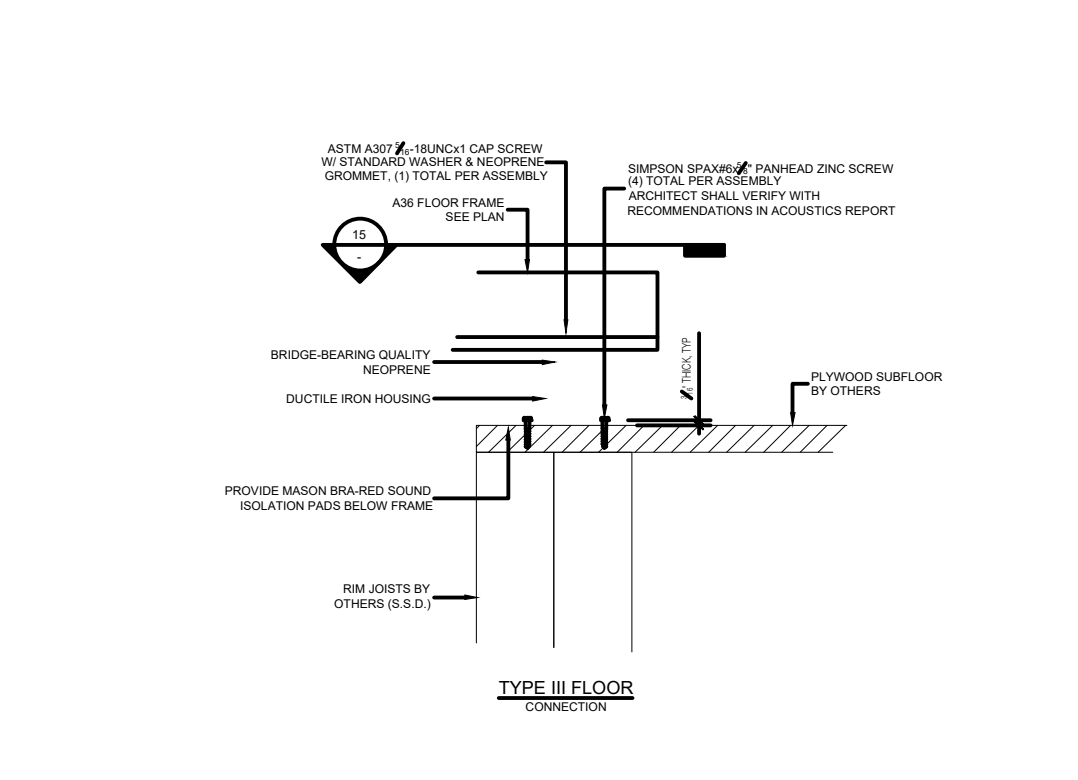
6 TRASH CHUTE JANITOR ABOVE FIRST INTAKE



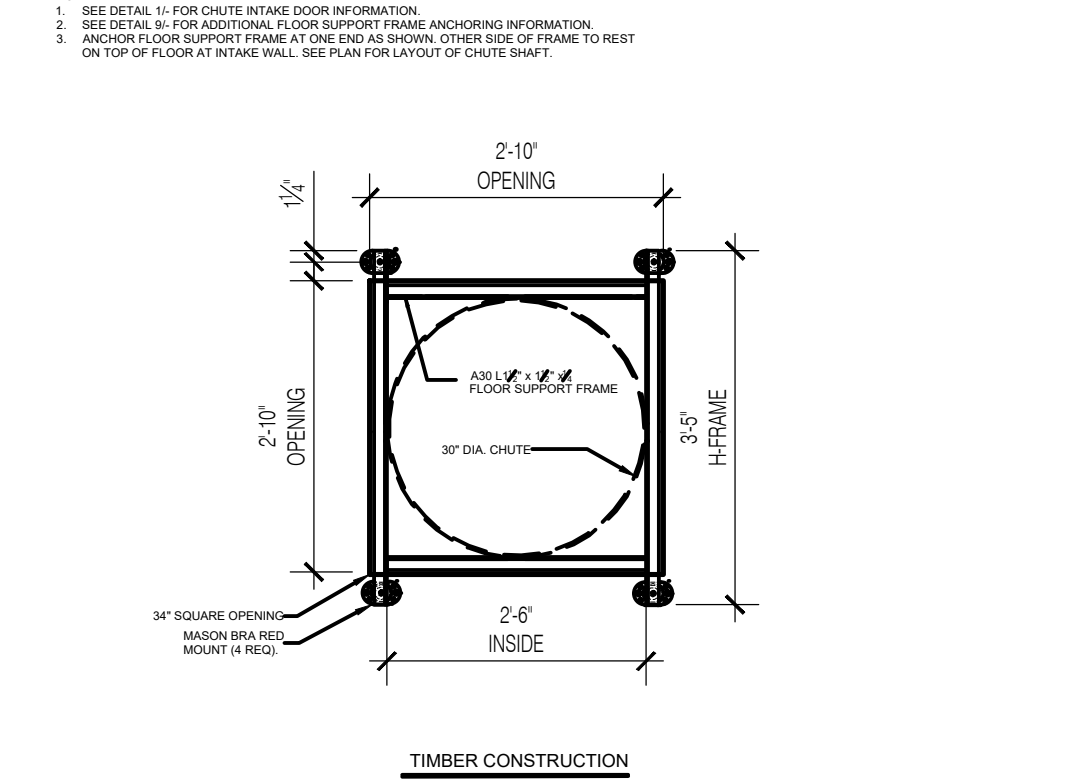
7 TRASH SANITATION UNIT AT HIGHEST INTAKE



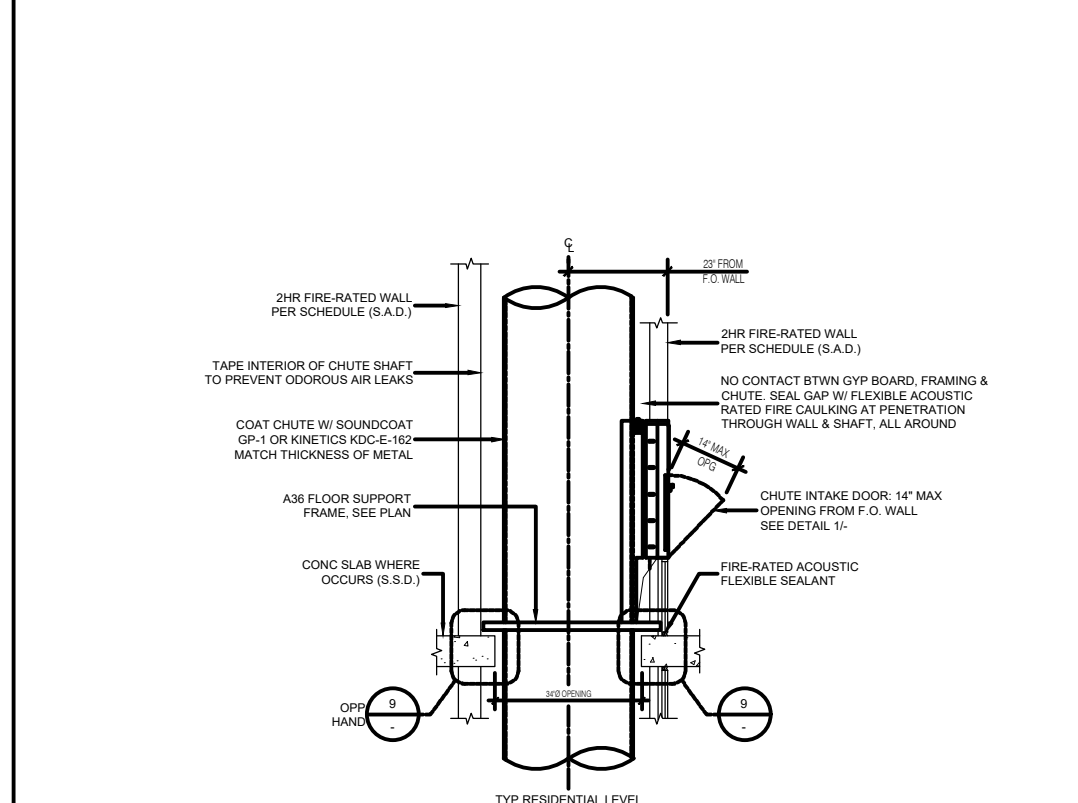
9 FLOOR SUPPORT FRAME ANCHORING SECTION VIEWS



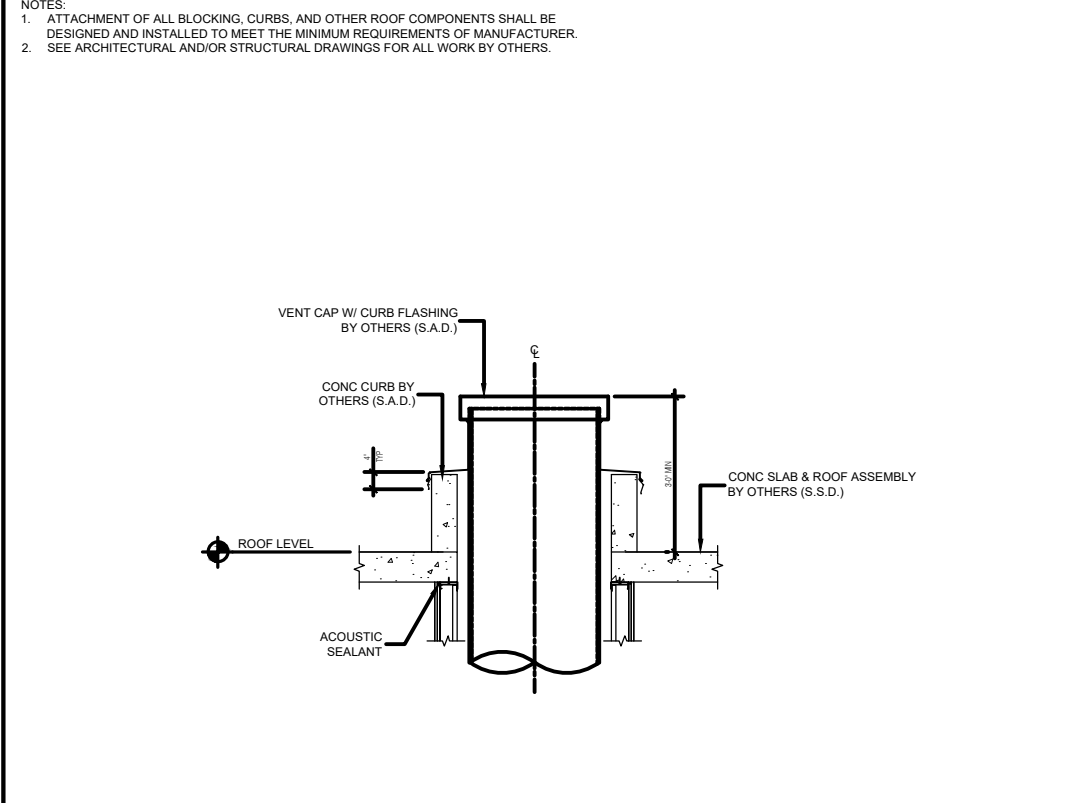
10 CHUTE SHAFT AT INTAKE



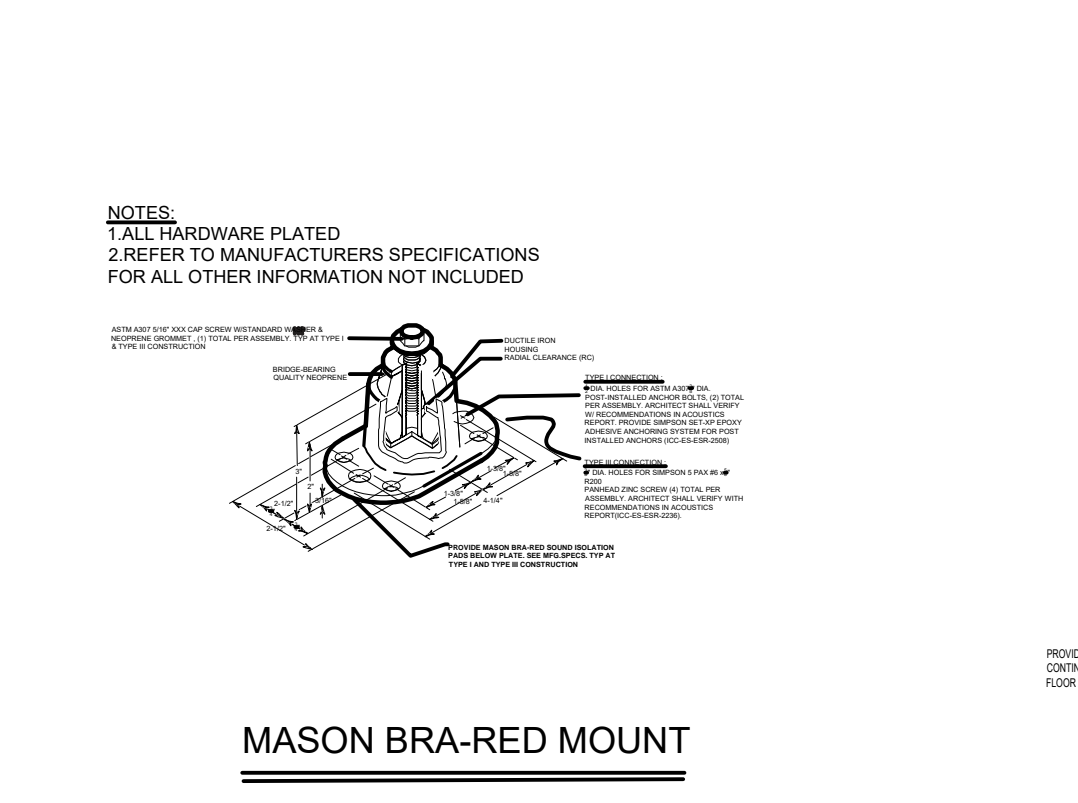
9 FLOOR SUPPORT FRAME ANCHORING SECTION VIEWS



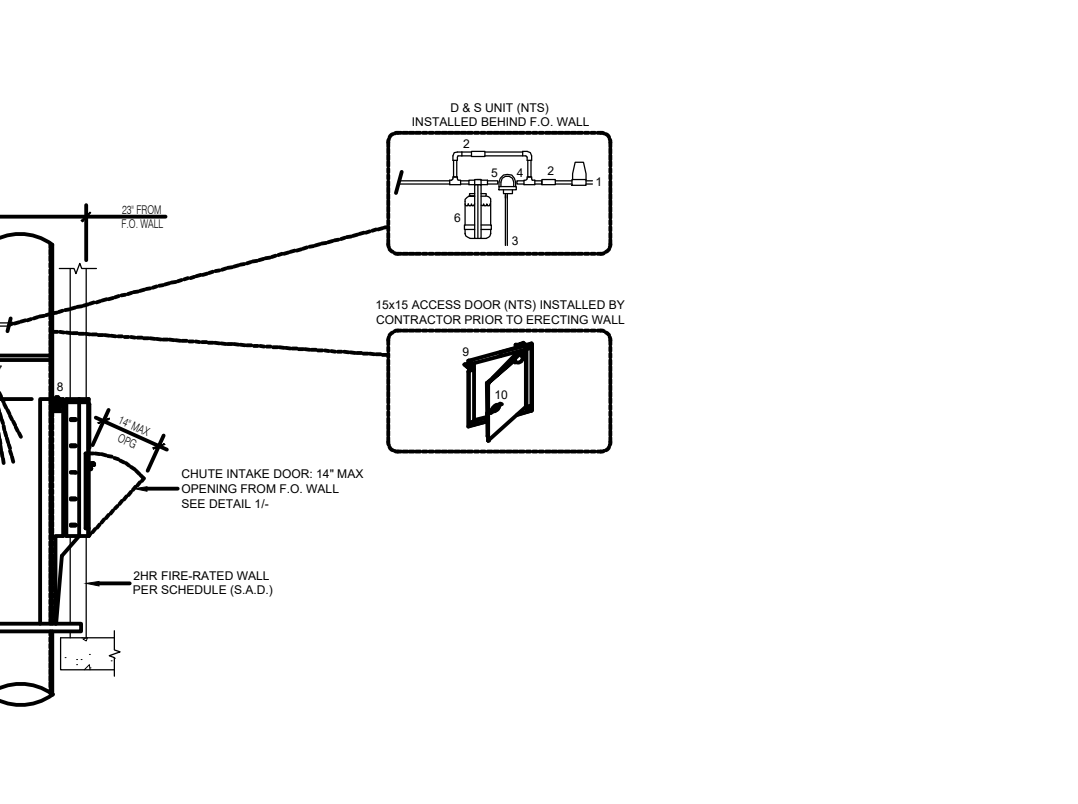
10 CHUTE SHAFT AT INTAKE



11 CHUTE VENT AT ROOF LEVEL



12 FLOOR SUPPORT FRAME ANCHORING PLAN VIEWS



7 TRASH SANITATION UNIT AT HIGHEST INTAKE

NO.	DATE	ISSUE / REVISION	ISSUED BY

268 PARROTT AVE.  
SAN LEANDRO, CA

PROJECT

**TRASH CHUTE DETAILS**

DRAWING TITLE

PROJECT NO.	DRAWING NO.
DRAWN MC	T2.0
APPROVED SB	
DATE 10/02/18	
SCALE NTS	