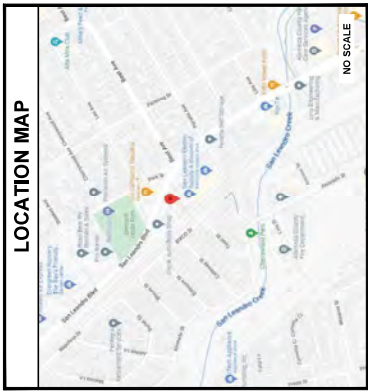


FIRSTNET/AT&T SITE ID: CCL05539
FIRSTNET/AT&T SITE NAME: ALVARADO ST & CALLAWAY ST
FA LOCATION CODE: 15521709
USID: 314957
PAGE #: MRSFR077581

CANC-SLEAN01
 440 PERALTA AVENUE
 SAN LEANDRO, CA 94577
ALAMEDA
MONOPINE
80'-0"

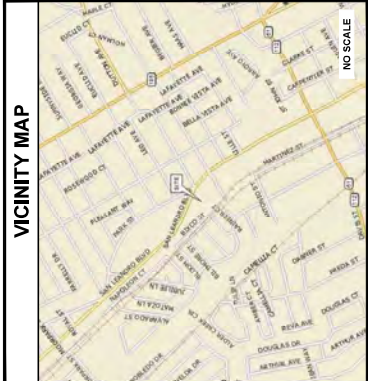
PSTC SITE #:
SITE ADDRESS:
COUNTY:
SITE TYPE:
TOWER HEIGHT:

LOCATION MAP



NO SCALE

VICINITY MAP



NO SCALE

DRAWING INDEX

| SHEET # | TITLE SHEET | DESCRIPTION | REV |
|-----------|------------------------------|-------------|-----|
| T-1 | GENERAL NOTES | | H |
| GN-1 | SITE SURVEY | | H |
| LS-1 | NOTES | | O |
| LS-2 | OVERALL SITE PLAN | | O |
| LS-3 | EXISTING SITE PLAN | | H |
| C-1.1 | PROPOSED SITE PLAN | | H |
| C-1.2 | COMPOUND LAYOUT | | H |
| C-2.1-2.4 | FINAL ELEVATIONS | | H |
| C-3 | ANTENNA LAYOUT & SCHEDULE | | H |
| C-4 | WALK-UP-CABINET DETAILS | | H |
| C-5 | GENERATOR DETAILS | | H |
| C-6 | BATTERY DETAILS | | H |
| C-7 | FIRE EXTINGUISHER DETAILS | | H |
| C-8 | CMU WALL DETAILS | | H |
| C-9 | EQUIPMENT DETAILS | | H |
| C-10 | EQUIPMENT DETAILS | | H |
| C-11 | CONCEALMENT DETAILS | | H |
| E-1 | ELECTRICAL AC PANEL SCHEDULE | | H |
| E-2 | ELECTRICAL ONE-LINE DIAGRAM | | H |

ALL DRAWINGS CONTAINED HEREIN ARE FORMATTED FOR 24x36 PLOTTERS. THE USER SHALL PRINT AND CHECK THE DRAWINGS FOR ACCURACY. THE ENGINEER IN WRITING OF ANY DISCREPANCIES BEFORE PROCEEDING WITH THE WORK OR BE RESPONSIBLE FOR SAME.

SITE INFORMATION

PSTC SITE NAME: 440 PERALTA
SITE ADDRESS: 440 PERALTA AVENUE
 SAN LEANDRO, CA 94577
COUNTY: ALAMEDA
MAP/PARCEL #: 754295-14
AREA OF CONSTRUCTION: 1,235 SQ FT
LATITUDE: N 37° 43' 41.58" (317.728211°)
LONGITUDE: W 122° 09' 56.26" (4124.165657°)
LAT/LONG TYPE: 472
GROUND ELEVATION: 472
CURRENT ZONING: DA-2
JURISDICTION: CITY OF SAN LEANDRO
OCCUPANCY CLASSIFICATION: U
TYPE OF CONSTRUCTION: V-B
A.D.A. COMPLIANCE: FACILITY IS UNMANNED AND NOT FOR HUMAN HABITATION
PROPERTY OWNER: LEE DONALD R & JO A TRS
 501 E ELWOOD ST, STE 9
 OAKLAND, CA 94612
TOWER OWNER: PUBLIC SAFETY TOWERS, LLC
 1903 WRIGHT PLACE, SUITE 140
 CARLSBAD, CA 92008
CARRIER/APPLICANT: AT&T
ELECTRIC PROVIDER: PG&E
TELCO PROVIDER: AT&T

PROJECT TEAM

PUBLIC SAFETY TOWERS, LLC
 CONTACT: 1903 WRIGHT PLACE, SUITE 140
 CARLSBAD, CA 92008
 CAROL MINCHELLO
 SVP/GENERAL MANAGER
 858-439-1100
 CM@PSTCTOWERS.COM
 (858) 755-4171
TOWER ENGINEERING PROFESSIONALS
 CONTACT: 4710 E ELWOOD ST, STE 9
 PHOENIX, AZ 85040
 CAROL MINCHELLO
 (251) 409-5439
CIVIL ENGINEER: STEPHEN BUNTING PE
 SBUNTING@TEPGROUP.NET
 (919) 851-4330
ELECTRICAL ENGINEER: MEGA CELESTINE@TEPGROUP.NET
 (919) 851-4331
AT&T PROJECT TEAM: ANTHONY CRUZ
 ACruz@att.com
RF ENGINEER: ACruz@att.com

PROJECT DESCRIPTION

THE PURPOSE OF THIS PROJECT IS TO INCREASE BROADBAND CONNECTIVITY AND CAPACITY IN THE AREA FOR EMERGENCY SERVICE AND FIRELESS 911 TOWERS.

TOWER SCOPE OF WORK

- INSTALL (1) 80' MONOPINE TOWER
- INSTALL (8) ANTENNAS ON (8) JOINTS
- INSTALL (8) RACKS
- INSTALL (8) DCS FIBER SQUIDS
- INSTALL (8) FIBER TRUNKS
- INSTALL (8) FIBER TRUNKS
- INSTALL (8) SECTOR MOUNTS

GROUND SCOPE OF WORK

- INSTALL 30" x 30" x 3" CMU WALLED COMPOUND
- INSTALL (1) 600A GUTTER
- INSTALL (1) 200A METER
- INSTALL (1) CONCRETE PAD
- INSTALL (1) WALK-UP-CABINET (WUC)
- INSTALL (1) 30 KW DIESEL GENERATOR
- INSTALL (1) GROUND LEVEL DC56 SPD
- INSTALL (1) 30" x 30" x 12" HOBBASIAN BOX WITH GENIA ABOVE
- INSTALL (8) BATTERIES
- INSTALL (8) BATTERIES

HAZARDOUS MATERIALS

- ELECTROLYTE IN BATTERIES (DETAILS ON C-9)

APPLICABLE CODES/REFERENCE DOCUMENTS

ALL WORK SHALL BE PERFORMED AND MATERIALS INSTALLED IN ACCORDANCE WITH THE CURRENT EDITIONS OF THE FOLLOWING CODES AS ADOPTED BY THE LOCAL GOVERNING AUTHORITIES. NOTHING IN THESE PLANS IS TO BE CONSTRUED TO PERMIT WORK NOT CONFORMING TO THESE CODES:

CODE TYPE
 BUILDING
 ELECTRICAL
 STRUCTURAL

SCOPE
 2022 CBC/IBC
 2022 CBC/2021 NEC
 2022 CBC/2020 NEC
 BIA/TIA-422-A

REFERENCE DOCUMENTS:
 RFDS VERSION: 1.02
 DATE UPDATED: 10/19/2022

CALL CALIFORNIA ONE CALL
 (800) 227-2800
 CALL 3 WORKING DAYS
 BEFORE YOU DIG!



ISSUED FOR:

| REV | DATE | BY | DESCRIPTION | QA |
|-----|----------|-----|-------------|------|
| 0 | 12-09-22 | 500 | 20000 | THRU |
| 1 | 01-10-23 | 500 | 20000 | THRU |
| 2 | 11-16-23 | 500 | 20000 | THRU |
| 3 | 07-18-24 | 500 | 20000 | THRU |

SEAL:



REVISIONS:

| SHEET NUMBER: | REVISION: |
|---------------|-----------|
| T-1 | H |

TITLE SHEET

SHEET NUMBER: T-1
REVISION: H

TEP #: 314190.336174

PUBLIC SAFETY TOWERS
 1903 WRIGHT PLACE, SUITE 140
 CARLSBAD, CA 92008

AT&T
 5005 EXECUTIVE PARKWAY
 SAN JOSE, CA 95128

TOWER ENGINEERING PROFESSIONALS
 4175 BAYVIEW AVENUE, SUITE 200
 OFFICE (408) 285-0038
 www.tepgrp.com

FIRSTNET/AT&T ID: CCL05539
ALVARADO ST & CALLAWAY ST
PSTC #: CANC-SLEAN01
440 PERALTA AVENUE
SAN LEANDRO, CA 94577
(ALAMEDA COUNTY)
PROPOSED 80'-0" MONOPINE TOWER

ISSUED FOR:

| REV | DATE | BY/IN | DESCRIPTION | QA |
|-----|----------|-------|-------------|------|
| 0 | 12-07-22 | 5500 | 2024G | THRU |
| 1 | 01-03-23 | 5500 | 2024G | THRU |
| 2 | 11-16-23 | 5500 | 2024G | THRU |
| 3 | 07-18-24 | 6204 | 2024G | THRU |

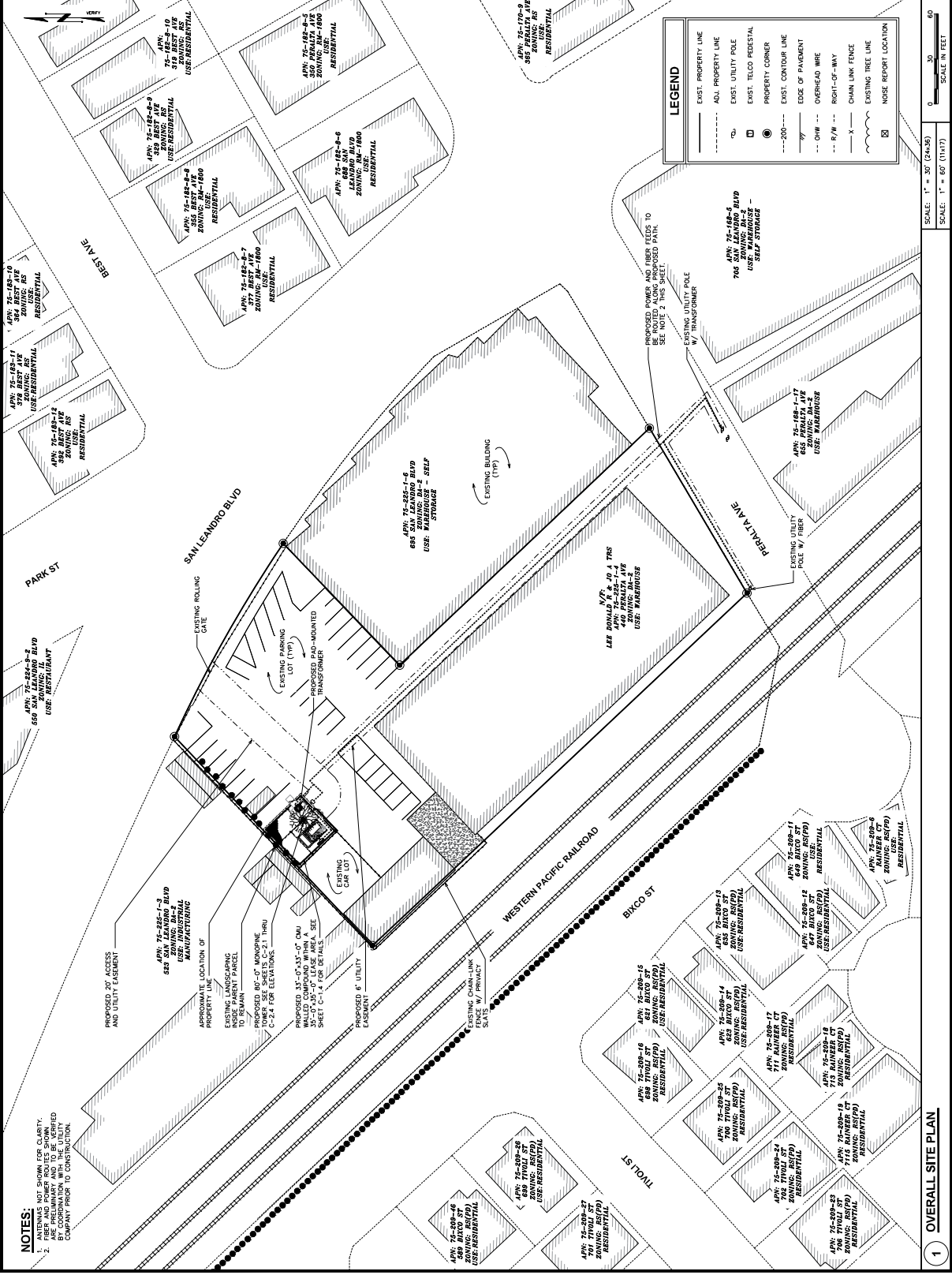
SEAL:

SHEET TITLE:
OVERALL SITE PLAN

SHEET NUMBER:
C-1.1

REVISION:
H

TEP #:
 314190336174



NOTES:
 1. ANTENNAS NOT SHOWN FOR CLARITY.
 2. ALL ANTENNAS AND SUPPORT STRUCTURES ARE PRELIMINARY AND TO BE VERIFIED BY THE CLIENT AND ENGINEER COMPANY PRIOR TO CONSTRUCTION.

1 OVERALL SITE PLAN

1903 WRIGHT PLACE, SUITE 140
CARLSBAD, CA 92008

5005 EXECUTIVE PARKWAY
SAN RAMON, CA 94583

TOWER ENGINEERING PROFESSIONALS
4715 CALIFORNIA STREET, SUITE 200
PACIFIC PALISADES, CA 91351
OFFICE (480) 285-0036
www.tepgrp.com

FIRSTNET/AT&T ID: CCL05539
ALVARADO ST
& CALLAWAY ST

PSTC #: CANC-SLEAN01
440 PERALTA

440 PERALTA AVENUE
SAN LEANDRO, CA 94577
(ALAMEDA COUNTY)

PROPOSED 80'-0"
MONOPINE TOWER

ISSUED FOR:

| REV | DATE | BY/IN | DESCRIPTION | QA |
|-----|----------|-------|-------------|------|
| 0 | 12-09-12 | 5502 | 200905 | TRMU |
| 1 | 01-10-13 | 5502 | 200905 | TRMU |
| 2 | 11-16-13 | 5502 | 200905 | TRMU |
| 3 | 07-18-14 | 6204 | 200905 | TRMU |

SEAL:

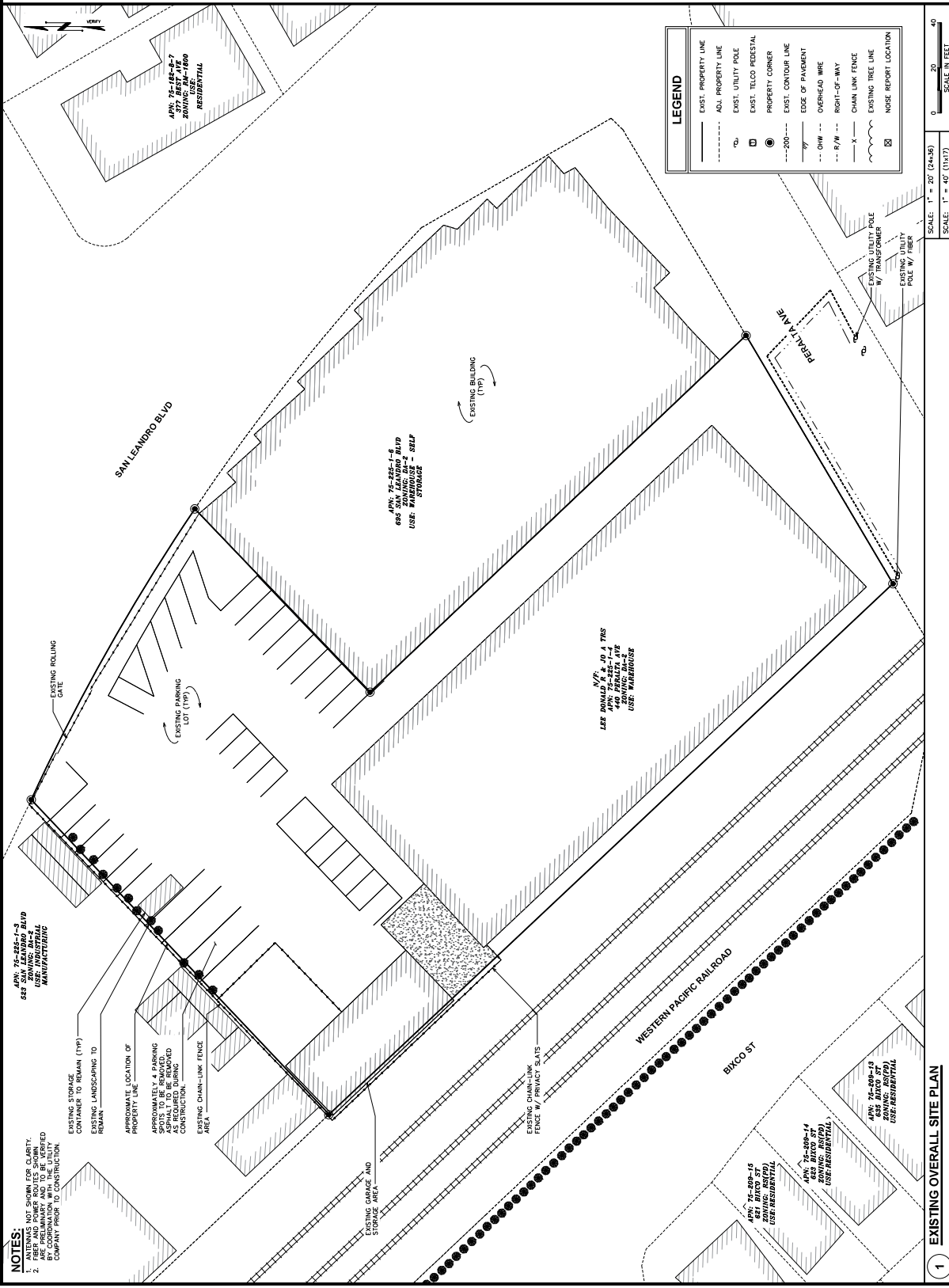
THE SEALED DOCUMENT IS VALID FOR 24 MONTHS UNLESS THERE ARE ACTIONS UNDER THE JURISDICTION OF A BOARD OF PROFESSIONAL ENGINEERS.

SHEET TITLE:
EXISTING SITE PLAN

SHEET NUMBER:
C-1.2

REVISION:
H

TEP #:
31-190-336174



SCALE: 1" = 40' (24x35)
SCALE: 1" = 40' (11x17)

1 EXISTING OVERALL SITE PLAN

PUBLIC SAFETY TOWERS COMPANY
1903 WRIGHT PLACE, SUITE 140
CARLSBAD, CA 92008

AT&T
5005 EXECUTIVE PARKWAY
SAN RAMON, CA 94583

TOWER ENGINEERING PROFESSIONALS
4715 HUNTERS BLVD. #100
PACIFIC PALMS, CA 92651
OFFICE (407) 285-0038
www.tepgrp.com

FIRSTNET/AT&T ID: CCL05539
ALVARADO ST
& CALLAWAY ST
PSTC #: CANC-SLEAN01
440 PERALTA
440 PERALTA AVENUE
SAN LEANDRO, CA 94577
(ALAMEDA COUNTY)
PROPOSED 80'-0"
MONOPINE TOWER

ISSUED FOR:

| REV | DATE | BY/IN | DESCRIPTION | QA |
|-----|----------|-------|-------------|------|
| 0 | 12-09-22 | 5500 | 2020RGS | TRMU |
| 1 | 01-03-23 | 5500 | 2020RGS | TRMU |
| 2 | 11-16-23 | 5500 | 2020RGS | TRMU |
| 3 | 07-18-24 | 0504 | 2020RGS | TRMU |

SEAL:

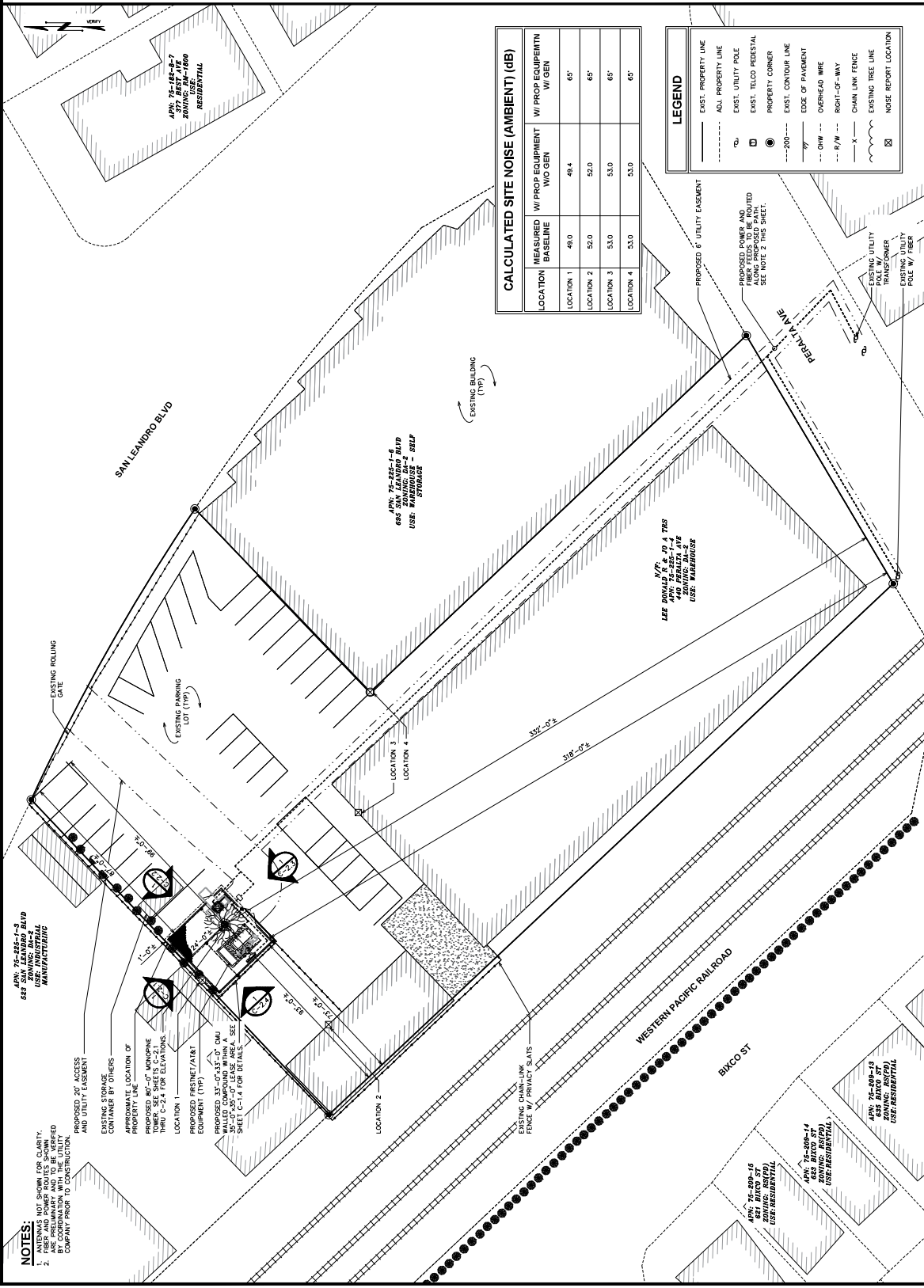
SEAL: 1 - 207 (24285)
SCALE: 1" = 40' (1:160)

SHEET TITLE:
FINAL SITE PLAN

SHEET NUMBER:
C-1.3

REVISION:
H

TEP #:
31-190-336174



1 FINAL OVERALL SITE PLAN

SCALE: 1" = 40' (1:160)

NOTES:

1. AREAS NOT SHOWN FOR CLARITY.
2. ARE PRELIMINARY AND TO BE VERIFIED BY THE CLIENT AND LOCAL AGENCIES PRIOR TO CONSTRUCTION.

APN: 75-285-1-3
ZONING: M1-2
USER: MANUFACTURING

APN: 75-285-1-8
683 SAN LEANDRO BLVD
USAGE: BARNHOUSE - 2 SELF STORAGE

APN: 75-285-1-9
440 PERALTA AVE
ZONING: M1-2
USER: MANUFACTURING

APN: 75-285-1-4
633 BKCO ST
ZONING: M1-2
USER: RESIDENTIAL

APN: 75-285-1-1
635 BKCO ST
ZONING: M1-2
USER: RESIDENTIAL

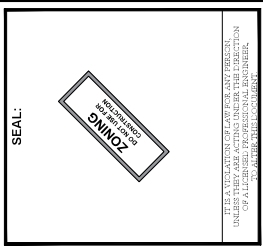


TOWER ENGINEERING PROFESSIONALS
 4715 W. WOODWAY
 P.O. BOX 12,850/01
 OFFICE (409) 285-0036
 www.tegroup.net

FIRSTNET/AT&T ID: CCL05539
ALVARADO ST & CALLAWAY ST
PSTC #: CANC-SLEAN01
440 PERALTA AVENUE
SAN LEANDRO, CA 94577
(ALAMEDA COUNTY)
PROPOSED 80'-0" MONOPINE TOWER

ISSUED FOR:

| REV | DATE | BY/IN | DESCRIPTION | QA |
|-----|----------|-------|-------------|------|
| 0 | 12-09-22 | 5502 | 2020/05 | THRU |
| 1 | 01-09-23 | 5502 | 2020/05 | THRU |
| 2 | 11-16-23 | 5502 | 2020/05 | THRU |
| 3 | 07-18-24 | 6204 | 2020/05 | THRU |

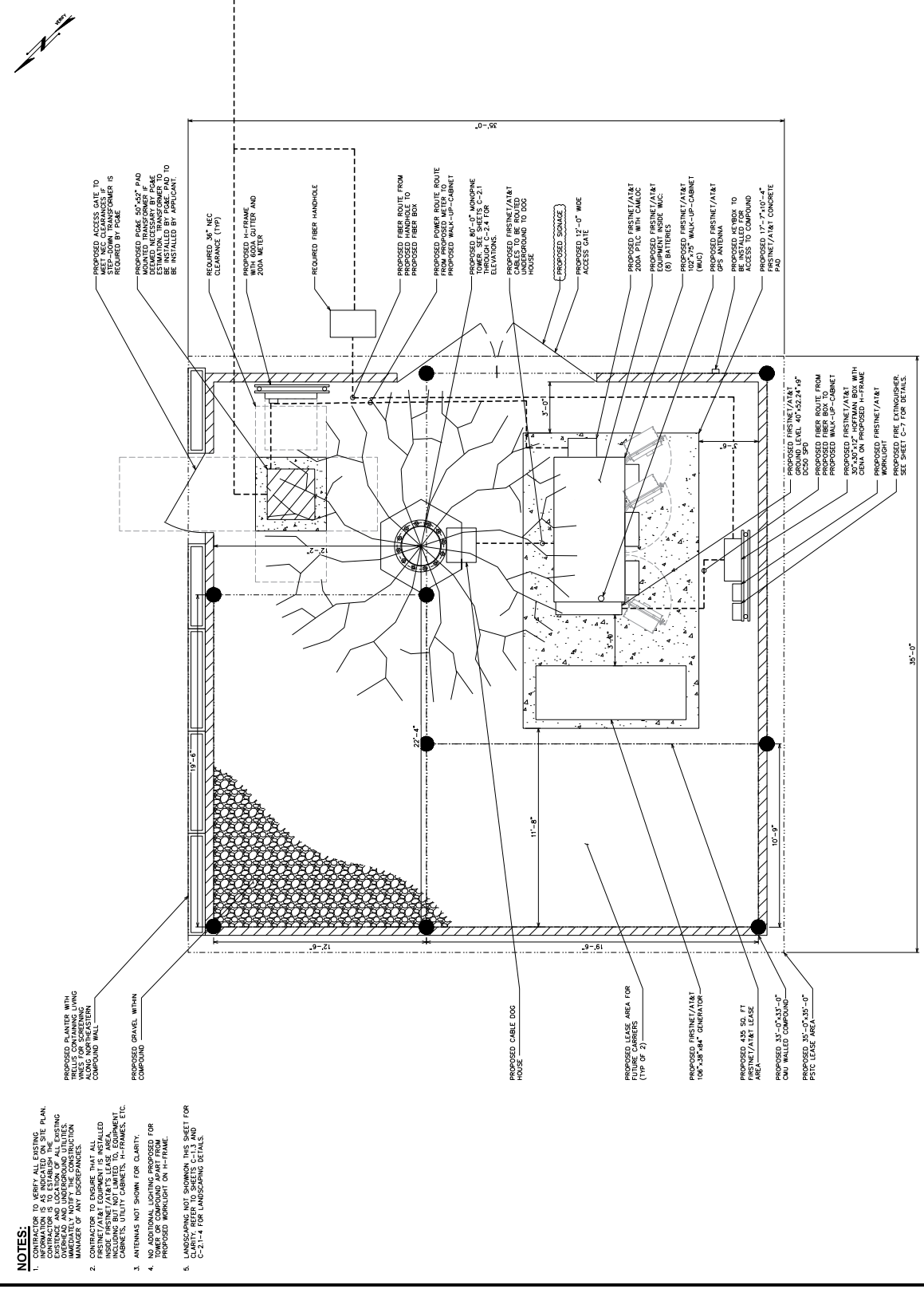


SHEET TITLE:
COMPOUND LAYOUT

SHEET NUMBER: **C-1.4** **H**

REVISION:

TEP #: 31-4190.336174



SCALE: 1" = 1'-0" (24x36)

SCALE: 1/8" = 1'-0" (11x17)

SCALE IN FEET

0 2

1 **FINAL COMPOUND LAYOUT**



FIRSTNET/AT&T ID: CCL056539
ALVARADO ST & CALLAWAY ST

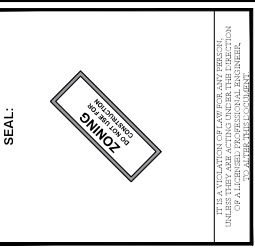
PSTC #: CANC-SLEAN01
440 PERALTA

440 PERALTA AVENUE
SAN LEANDRO, CA 94577
(ALAMEDA COUNTY)

PROPOSED 80'-0" MONOPINE TOWER

ISSUED FOR:

| REV | DATE | BY/IN | DESCRIPTION | QA |
|-----|----------|-------|-------------|------|
| 0 | 12-09-22 | 5502 | 2020RGS | THOU |
| 1 | 01-10-23 | 5502 | 2020RGS | THOU |
| 2 | 04-26-23 | 5502 | 2020RGS | THOU |
| 3 | 11-16-23 | 5502 | 2020RGS | THOU |
| 4 | 07-18-24 | 6204 | 2020RGS | THOU |

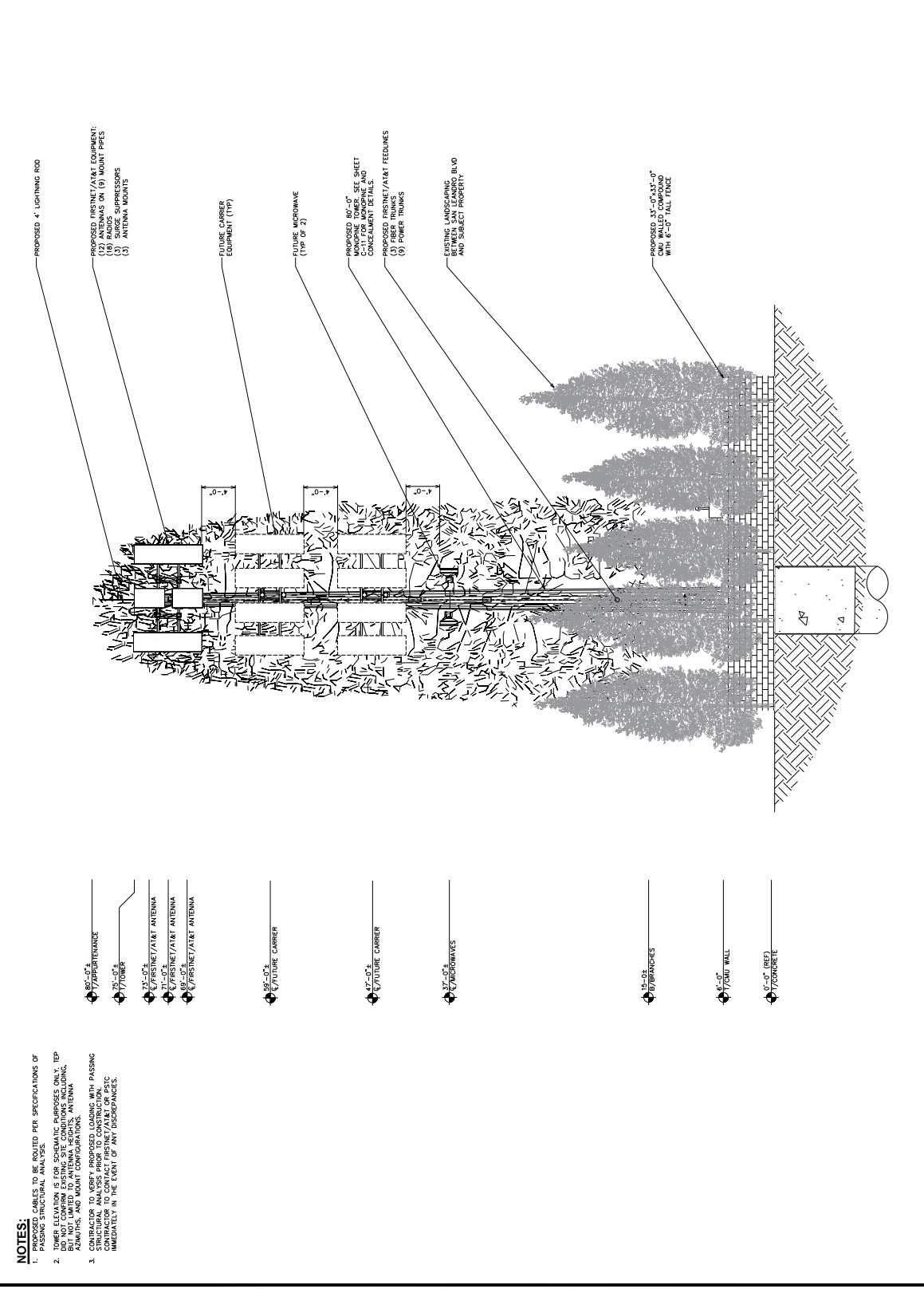


IF SEA VULNERABLE TO WIND, PER ONLY TOLERANCE UNDER THESE AOE ACTING UNDER THE DIRECTION OF A LICENSED PROFESSIONAL ENGINEER.

SHEET TITLE: NORTHWEST FINALEXCO ST (BLVD ADJACENT PROPERTY) ELEVATION

SHEET NUMBER: C-2.1 **REVISION: H**

TEP #: 314190336174



NOTES:

- PROPOSED CABLES TO BE ROUTED PER SPECIFICATIONS OF PASSING STRUCTURAL ANALYSIS.
- CONTRACTOR TO VERIFY PROPOSED LOADING WITH PASSING STRUCTURAL ANALYSIS PRIOR TO CONSTRUCTION. NOTIFY IMMEDIATELY IN THE EVENT OF ANY DISCREPANCIES.

- 80'-0" / AIRPORT ANTENNA
- 77'-0" / TOWER
- 75'-0" / FIRSTNET/AT&T ANTENNA
- 71'-0" / FIRSTNET/AT&T ANTENNA
- 67'-0" / FIRSTNET/AT&T ANTENNA
- 59'-0" / FUTURE CARRIER
- 47'-0" / FUTURE CARRIER
- 37'-0" / MICROWAVES
- 15'-0" / BRANCHES
- 17'-0" / GUY WALL
- 0'-0" (REF) / CONCRETE

1 FINAL NORTHWEST (SAN LEANDRO BLVD/ADJACENT PROPERTY) ELEVATION

SCALE: 3/4" = 1'-0" (24x36)
 SCALE: 3/8" = 1'-0" (11x17)



FIRSTNET/AT&T ID: CCL05639
ALVARADO ST & CALLAWAY ST
PSTC #: CANC-SLEAN01
440 PERALTA AVENUE
SAN LEANDRO, CA 94577
(ALAMEDA COUNTY)
PROPOSED 80'-0" MONOPINE TOWER

ISSUED FOR:

| REV | DATE | BY/IN | DESCRIPTION | QA |
|-----|----------|-------|-------------|------|
| 1 | 12-07-22 | 2050 | 202405 | TRMU |
| 2 | 01-10-23 | 2050 | 202405 | TRMU |
| 3 | 11-16-23 | 2050 | 202405 | TRMU |
| 4 | 07-18-24 | 2050 | 202405 | TRMU |

SEAL:

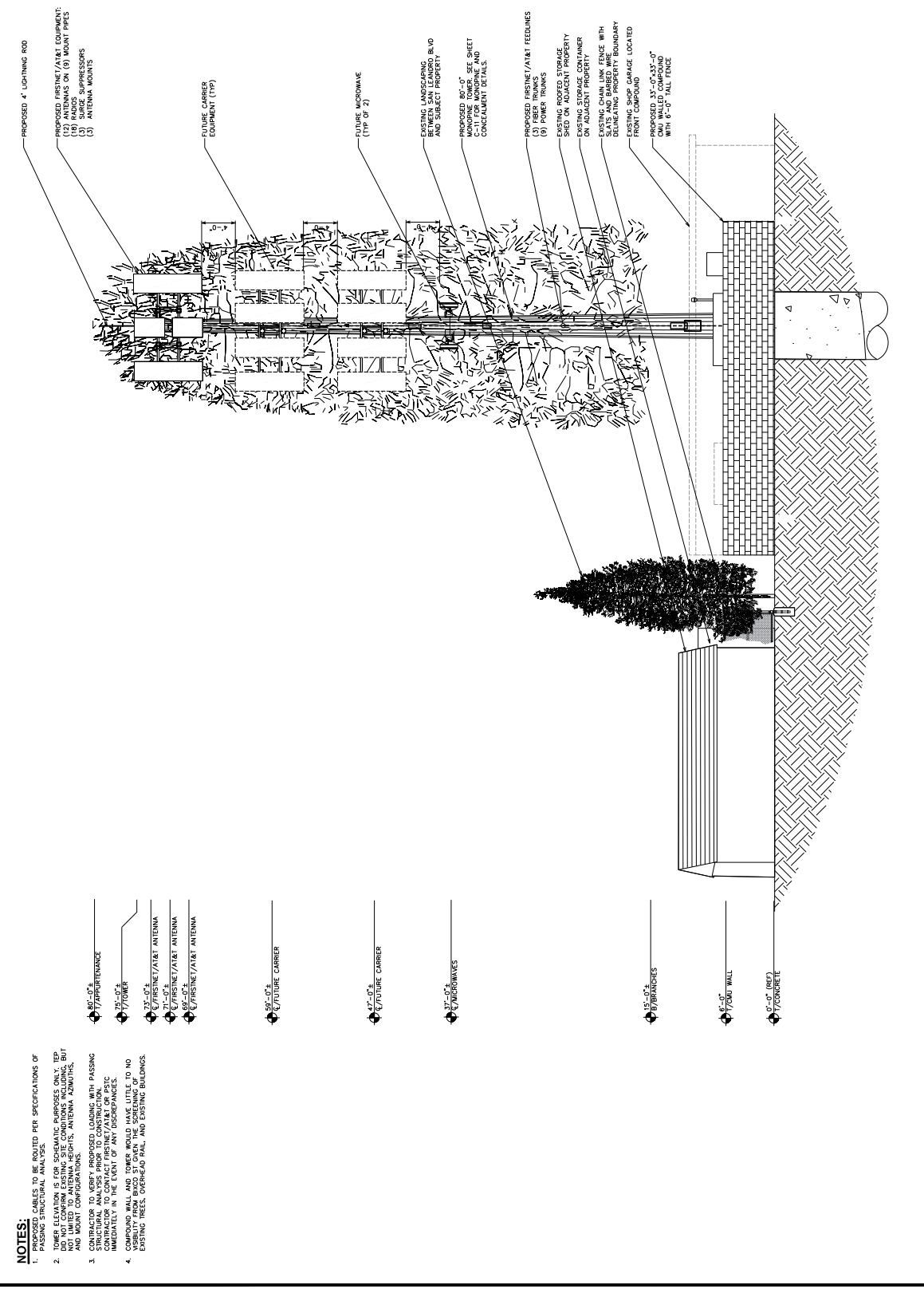
THE SEALED DOCUMENT IS VALID FOR ONLY THOSE PROJECTS FOR WHICH IT IS SEALED. IT IS VOID IF USED FOR ANY OTHER PROJECTS. UNDER THESE AND OTHER LAWS, THE PRACTICE OF PROFESSIONAL ENGINEERING WITHOUT BEING DULY LICENSED IS UNLAWFUL.

SHEET TITLE:
FINAL SOUTHWEST ELEVATION

SHEET NUMBER:
C-2.4

REVISION:
H

TEP #:
 31-4190-336174



- PROPOSED 4" LIGHTNING ROD
- PROPOSED PRESHIM/AT&T EQUIPMENT:
 - (18) RADIOS
 - (10) ROBOT PIPES
 - (2) ANTENNAS
 - (2) ANTENNA MOUNTS

FUTURE CARRIER EQUIPMENT (TYP)

FUTURE MICROWAVE (TYP OF 2)

EXISTING LANDSCAPING BETWEEN SAN LEANDRO BLVD AND SUBJECT PROPERTY

PROPOSED 80'-0" MONOPINE TOWER. SEE SHEET FOR MATERIALS AND CONCRETE DETAILS.

PROPOSED PRESHIM/AT&T FEEDINGS (8) POWER TRUNKS

EXISTING ROOTED STORAGE SHED ON ADJACENT PROPERTY

EXISTING CHAIN LINK FENCE WITH SLATS AND BARBED WIRE DELINEATING PROPERTY BOUNDARY

PROPOSED 30'-0" x 30'-0" CMU WALLED COMPOUND WITH 6'-0" TALL FENCE

NOTES:

- PROPOSED CABLES TO BE ROUTED PER SPECIFICATIONS OF PASSING STRUCTURAL ANALYSIS.
- CONTRACTOR TO VERIFY PROPOSED LOADING WITH PASSING STRUCTURAL ANALYSIS PRIOR TO CONSTRUCTION. ANY DISCREPANCIES TO BE REPORTED IMMEDIATELY IN THE EVENT OF ANY DISCREPANCIES.
- CONTRACTOR TO VERIFY PROPOSED LOADING WITH PASSING STRUCTURAL ANALYSIS PRIOR TO CONSTRUCTION. ANY DISCREPANCIES TO BE REPORTED IMMEDIATELY IN THE EVENT OF ANY DISCREPANCIES.
- COMPOUND WALL AND TOWER WOULD HAVE LITTLE TO NO VISIBILITY FROM BLVD ST WHEN THE SCREENING OF EXISTING TREES, SHRUBS AND EXISTING BUILDINGS.

80'-0" 2/ APPURTENANCE

30'-0" 2/ TOWER

8'-0" 2/ PRESHIM/AT&T EQUIPMENT

27'-0" 2/ PRESHIM/AT&T ANTENNA

69'-0" 2/ PRESHIM/AT&T ANTENNA

59'-0" 2/ FUTURE CARRIER

47'-0" 2/ FUTURE CARRIER

37'-0" 2/ MICROWAVES

15'-0" 2/ BRANCHES

6'-0" 2/ BRICK WALL

6'-0" 2/ (FEET) CONCRETE

SCALE: 3/4" = 1'-0" (24x36)
 SCALE: 3/8" = 1'-0" (10x17)
 0 4 8
 FEET
1 FINAL SOUTHWEST ELEVATION

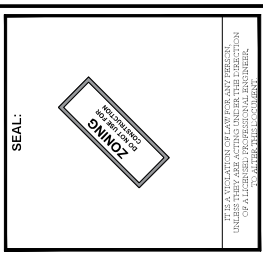


TOWER ENGINEERING PROFESSIONALS
 4170 W. WOODBRIDGE BLVD. #100
 SAN ANTONIO, TX 78240
 OFFICE: (409) 285-0038
 www.tegroup.net

FIRSTNET/AT&T ID: CCL05539
ALVARADO ST & CALLAWAY ST
PSTC #: CANC-SLEAN01
440 PERALTA
440 PERALTA AVENUE
SAN LEANDRO, CA 94577
(ALAMEDA COUNTY)
PROPOSED 80'-0" MONOPINE TOWER

ISSUED FOR:

| REV | DATE | BY/IN | DESCRIPTION | QA |
|-----|----------|-------|-------------|-------|
| 0 | 12-02-22 | 5502 | 2020RSG | TRM/D |
| 1 | 01-03-23 | 5502 | 2020RSG | TRM/D |
| 2 | 11-16-23 | 5502 | 2020RSG | TRM/D |
| 3 | 07-18-24 | 6204 | 2024RSG | TRM/D |



SHEET TITLE:
WALK-UP-CABINET
DETAILS

SHEET NUMBER:
C-4

REVISION:
H

TEP #:
 31-4190-336174

2.2 System Configuration

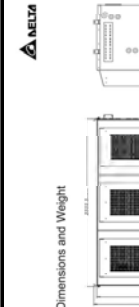


Figure 2-1: System Configuration

Table 2-1: Cabinet Specifications

| Item | Specification/Function |
|----------------------------|---|
| AC Input Range | 100-130VAC |
| AC Input Voltage | 120VAC (100-120VAC) |
| AC Input Current (Maximum) | 12A (Max.) |
| AC Input Frequency | 50/60Hz |
| DC Output Voltage | 48V (Nominal) |
| DC Output Current Rating | 24A (max) |
| Battery Section | 133 Tray array for 48V battery string, designed for 100Ah (20hr) @ 25°C |
| Battery Trays | GNB Mission M27N185FT (200Ah @ 25°C) or Energy SB11709F |
| Climate Control | Direct controller |
| Control & Supervision Unit | CD-3000 Mission M27N185FT |
| Coating | Electrocoat finish, 1000g/m ² (200g/ft ²) |
| Coating | with color of interior color |
| Humidity | 10% to 90% RH (non-condensing) |
| Operating Temperature | 40°C to 48°C (104°F to 118°F) |
| Storage Temperature | 40°C to 135°C (104°F to 275°F) |
| Relative Humidity | 5% to 95% (non-condensing) |
| Acoustic noise | 1.0 SLM (A) @ 40°C (equipment side) |
| Protection Class | IP55 (EN 60529) NEMA 4 (DIN 471) |

2.3 Cabinet Specifications



Figure 2-2: Multi-Bay Cabinet (Front View)

Installation and Operation Manual

2.4 Dimensions and Weight

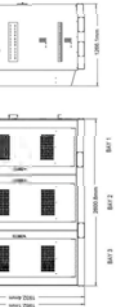


Figure 2-3: Cabinet Dimensions

| Item | Dimensions |
|--------|-------------------------------|
| Front | 1000 (W) x 1750 (H) x 600 (D) |
| Side | 1000 (W) x 1750 (H) x 600 (D) |
| Top | 1000 (W) x 1750 (H) x 600 (D) |
| Weight | 2270 lbs |

2.5 AC Load Cabinet Installation

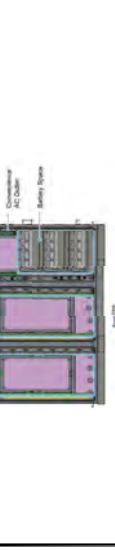


Figure 2-4: AC Load Cabinet Installation

Installation and Operation Manual

3.6 Cabinet Installation



Figure 3-6: Cabinet Installation

3.7 AC Load Cabinet - MTS



Figure 3-7: AC Load Cabinet - MTS

Installation and Operation Manual

3.8 AC Load Cabinet Installation



Figure 3-8: AC Load Cabinet Installation

3.9 AC Load Cabinet - MTS



Figure 3-9: AC Load Cabinet - MTS

Installation and Operation Manual

3.10 AC Load Cabinet - MTS



Figure 3-10: AC Load Cabinet - MTS

3.11 Mounting Template



Figure 3-11: Mounting Template

Installation and Operation Manual

3.12 Invert Installation



Figure 3-12: Invert Installation

3.13 Invert Installation



Figure 3-13: Invert Installation

Installation and Operation Manual

3.14 AC Load Cabinet - MTS

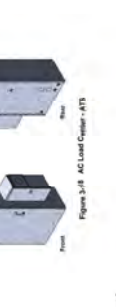


Figure 3-14: AC Load Cabinet - MTS

3.15 AC Load Cabinet - MTS



Figure 3-15: AC Load Cabinet - MTS

Installation and Operation Manual

3.16 AC Load Cabinet - MTS



Figure 3-16: AC Load Cabinet - MTS

3.17 AC Load Cabinet - MTS



Figure 3-17: AC Load Cabinet - MTS

Installation and Operation Manual

3.18 AC Load Cabinet - MTS

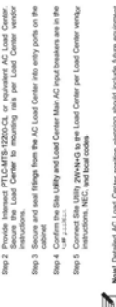


Figure 3-18: AC Load Cabinet - MTS

3.19 AC Load Cabinet - MTS



Figure 3-19: AC Load Cabinet - MTS

Installation and Operation Manual

3.20 AC Load Cabinet - MTS



Figure 3-20: AC Load Cabinet - MTS

3.21 AC Load Cabinet - MTS



Figure 3-21: AC Load Cabinet - MTS

Installation and Operation Manual

3.22 AC Load Cabinet - MTS

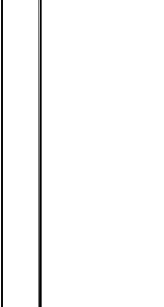


Figure 3-22: AC Load Cabinet - MTS

3.23 AC Load Cabinet - MTS

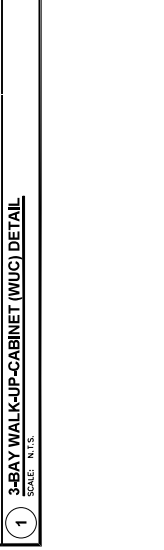


Figure 3-23: AC Load Cabinet - MTS

Installation and Operation Manual

3.24 AC Load Cabinet - MTS



Figure 3-24: AC Load Cabinet - MTS

3.25 AC Load Cabinet - MTS



Figure 3-25: AC Load Cabinet - MTS

Installation and Operation Manual

1903 WRIGHT PLACE, SUITE 140
CARLSBAD, CA 92008

5005 EXECUTIVE PARKWAY
SAN ANTONIO, TX 78238

4111 CANTON LANE
PHOENIX, AZ 85040
OFFICE: (480) 285-0038
www.tegpro.net

FIRSTNET/AT&T ID: CCL056339
ALVARADO ST
& CALLAWAY ST
PSTC #: CANC-SLEAN01
440 PERALTA AVENUE
SAN LEANDRO, CA 94577
(ALAMEDA COUNTY)
PROPOSED 80'-0"
MONOPINE TOWER

ISSUED FOR:

| REV | DATE | BY/IN | DESCRIPTION | QA |
|-----|----------|-------|-------------|------|
| 0 | 12-09-22 | 5502 | 2020RGS | TRMU |
| 1 | 01-03-23 | 5502 | 2020RGS | TRMU |
| 2 | 11-16-23 | 5504 | 2020RGS | TRMU |
| 3 | 07-18-24 | 6204 | 2020RGS | TRMU |

SEAL:

IT IS A VIOLATION OF LAW FOR ANY PERSON...
UNLESS THEY ARE ACTING UNDER THE DIRECTION...
OF A LICENSED PROFESSIONAL ENGINEER.

SHEET TITLE:
BATTERY DETAILS

SHEET NUMBER:
C-6

REVISION:
H

TEP #:
31-4190-336174

Standards

- Meets criteria for "non-spillable" batteries
- Complies with Recycled SP-4228, Network Equipment Building System (NEBS)™ Criteria Levels
- The management systems governing the installation of batteries are ISO 9001:2008 and ISO 14001:2004 certified

Installation and Operation

- Space efficient footprint
- VRLA design, reduces maintenance requirements
- Lifting handles for easy handling
- Greater than 10 year life expectancy in float service at 77°F (25°C)
- Sealed, spill resistant, sulfuric acid free, maintenance free
- Operating temperature: -40°F (-40°C) to 122°F (50°C)
- Recomended temperature: 68°F (20°C) to 88°F (30°C)

Construction

- Robust positive plates are designed to prolong service life and minimize corrosion resistance
- Advanced separator technology, AGM. This separator is absorbent when the AGM, preventing acid spills in case of accidental damage
- Cathode and cover in flame retardant UL94-V0 material, highly resistant to shock and vibration
- Terminals are stainless steel front access with by-pass terminals to prevent shorting
- Termination provide maximum conductivity
- Self-regulating one way pressure relief valves prevents ingress of atmospheric oxygen

General Specifications

| Cell Type | Nominal Capacity (20°C) | | Height (Minimum) | | Weight (lb) | | | | | |
|-----------|-------------------------|---------|------------------|--------|-------------|-----|------|------|-------|------|
| | At 20°C | At 25°C | In | Height | | | | | | |
| SBS 80F | 31 | 31 | 11.9 | 30.0 | 3.8 | 37 | 0.3 | 1.59 | 22.7 | 17.3 |
| SBS 90F | 36 | 36 | 11.9 | 30.0 | 3.8 | 37 | 7.2 | 1.84 | 26.2 | 11.8 |
| SBS 100F | 42 | 42 | 11.9 | 30.0 | 3.8 | 37 | 10.4 | 2.04 | 42.0 | 18.1 |
| SBS 110F | 50 | 50 | 15.6 | 30.5 | 4.3 | 148 | 11.1 | 2.67 | 71.9 | 36.6 |
| SBS 120F | 60 | 60 | 15.6 | 30.5 | 4.3 | 148 | 11.1 | 2.67 | 71.9 | 36.6 |
| SBS 130F | 70 | 70 | 17.9 | 30.5 | 4.8 | 173 | 10.6 | 3.20 | 117.0 | 56.3 |
| SBS 140F | 80 | 80 | 17.9 | 30.5 | 4.8 | 173 | 10.6 | 3.20 | 117.0 | 56.3 |
| SBS 150F | 90 | 90 | 22.1 | 30.5 | 4.9 | 125 | 11.1 | 2.93 | 131.7 | 64.7 |
| SBS 160F | 100 | 100 | 22.1 | 30.5 | 4.9 | 125 | 11.1 | 2.93 | 131.7 | 64.7 |



| MANUFACTURER: | ALPINE POWER SYSTEMS |
|------------------------------------|----------------------|
| MODEL: | POWERSAFE SBS 150F |
| BATTERY QTY: | 8 UNITS |
| TOTAL BATTERY WEIGHT (LBS): | 1293.5 |
| TOTAL BATTERY VOLUME (GAL): | 18.72 |
| TOTAL ELECTROLYTE VOLUME (GAL): | 18.72 |
| TOTAL ELECTROLYTE WEIGHT (KG/LBS): | 1293.5 / 285.4 |

connect@alpinepowersystems.com
877-993-8855

Click to view product web page

NEBS™ Certified

The PowerSafe SBS™ Front Terminal battery further extends the technical leadership of PowerSafe SBS battery product line, not only do PowerSafe SBS Front Terminal monoblocs retain the benefits typically associated with Thin Plate Pure Lead (TPPL) technology such as long life, high energy density, superior shelf life, etc., they also deliver exceptional cyclic performance in both float and fast charge applications, even in the hottest and harshest operating environments.

While conventional Valve Regulated Lead Acid (VRLA)/Absorbed Glass Mat (AGM) batteries struggle to cope with harsh conditions and frequent power outages, cutting edge (TPPL) technology makes PowerSafe 12V batteries the perfect solution for the challenging operating conditions of today's telecommunication networks.

PowerSafe SBS batteries are designed to high quality standards and a unique manufacturing methods means superior energy and power, high performance and proven reliability, there is no substitute for PowerSafe SBS Front Terminal batteries.

- Features and Benefits**
- Capacity range 31-190Ah
 - 12V monobloc configurations
 - Multiple string configurations available
 - Two year shelf life
 - SP4228 compliant
 - Proven long service life
 - High energy density and cycling capability

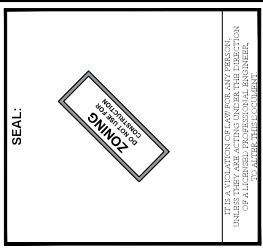
Publication No. US-SBSF-RS-004 - January 2014



FIRSTNET/AT&T ID: CCL05539
ALVARADO ST & CALLAWAY ST
PSTC #: CANC-SLEAN01
440 PERALTA AVENUE
SAN LEANDRO, CA 94577
(ALAMEDA COUNTY)
PROPOSED 80'-0" MONOPINE TOWER

ISSUED FOR:

| REV | DATE | BY/IN | DESCRIPTION | QA |
|-----|----------|-------|-------------|------|
| 0 | 12-02-22 | 2502 | 2020RGS | TRMU |
| 1 | 01-03-23 | 2502 | 2020RGS | TRMU |
| 2 | 11-16-23 | 2504 | 2020RGS | TRMU |
| 3 | 07-18-24 | 2024 | 2020RGS | TRMU |

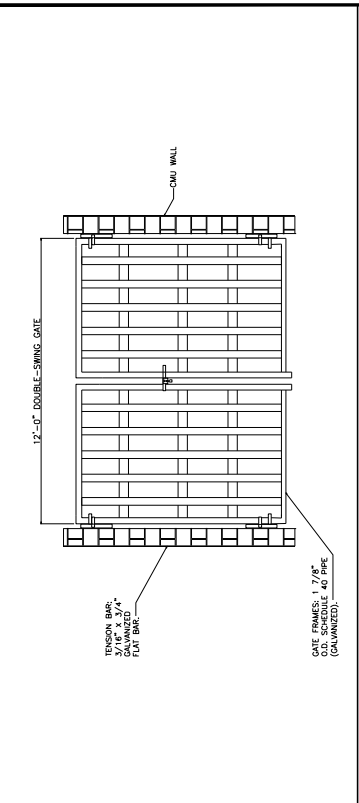


SHEET TITLE:
CMU WALL DETAILS

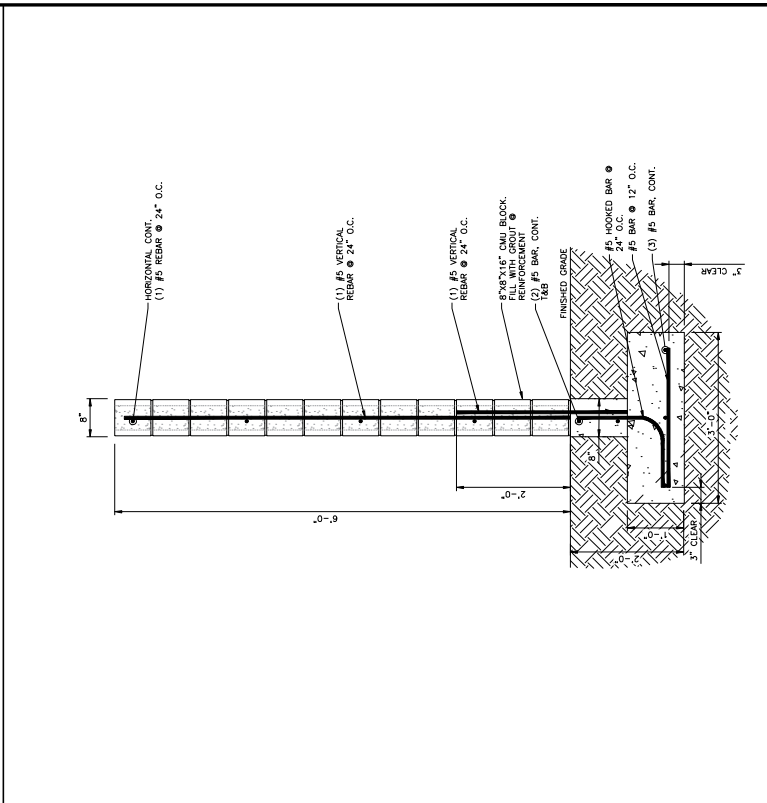
SHEET NUMBER:
C-8

REVISION:
H

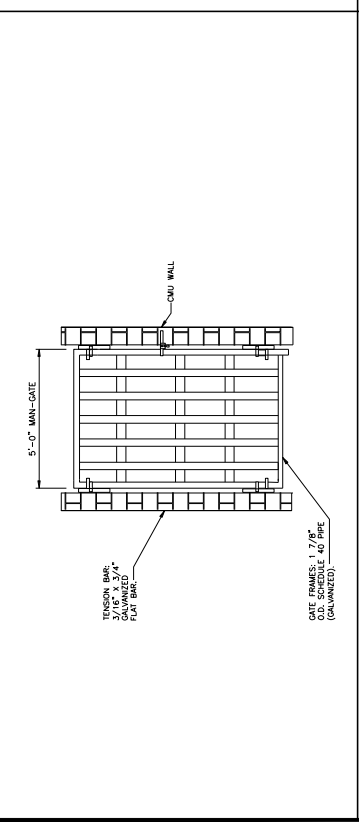
TEP #:
 31-4190.336174



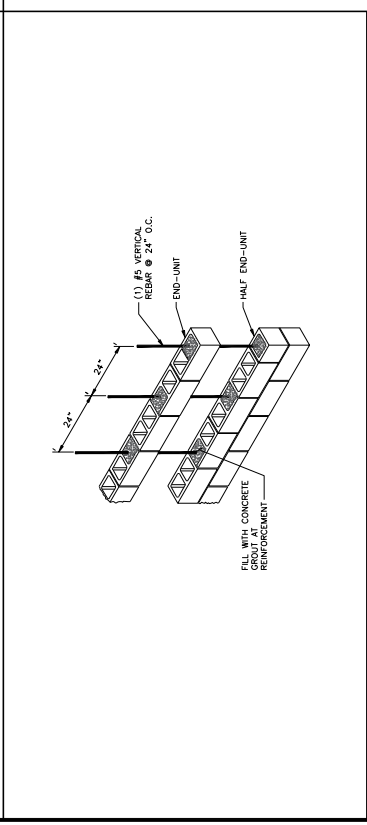
2 DOUBLE-SWING GATE DETAIL
 SCALE: N.T.S.



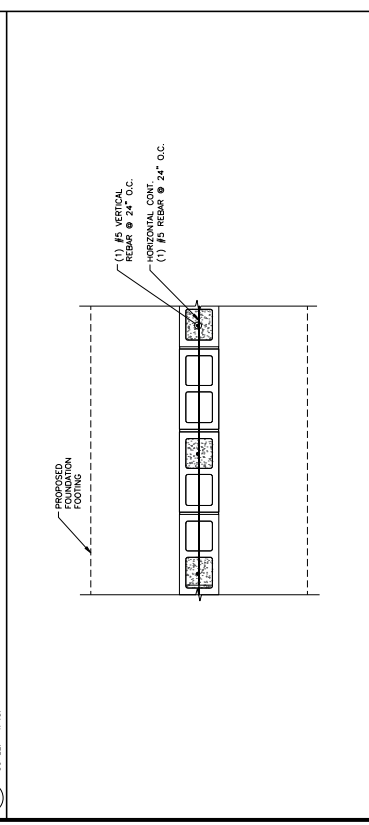
5 TYPICAL CMU WALL CROSS SECTION
 SCALE: N.T.S.



1 MANGATE DETAIL
 SCALE: N.T.S.



3 TYPICAL CMU WALL GROUTING & REINFORCEMENT
 SCALE: N.T.S.

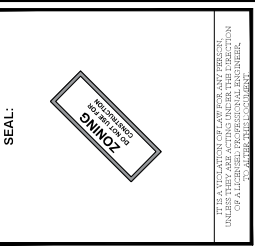


4 TYPICAL CMU WALL PLAN
 SCALE: N.T.S.



FIRSTNET/AT&T ID: CCL05639
ALVARADO ST & CALLAWAY ST
PSTC #: CANC-SLEAN01
440 PERALTA
440 PERALTA AVENUE
SAN LEANDRO, CA 94577
(ALAMEDA COUNTY)
PROPOSED 80-J
MONOPINE TOWER

| REV | DATE | BY/IN | DESCRIPTION | QA |
|-----|----------|-------|-------------|------|
| 0 | 12-02-22 | 5502 | 2020RSG | TRUO |
| 1 | 01-10-23 | 5502 | 2020RSG | TRUO |
| 2 | 11-16-23 | 5502 | 2020RSG | TRUO |
| 3 | 07-18-24 | 6204 | 2020RSG | TRUO |

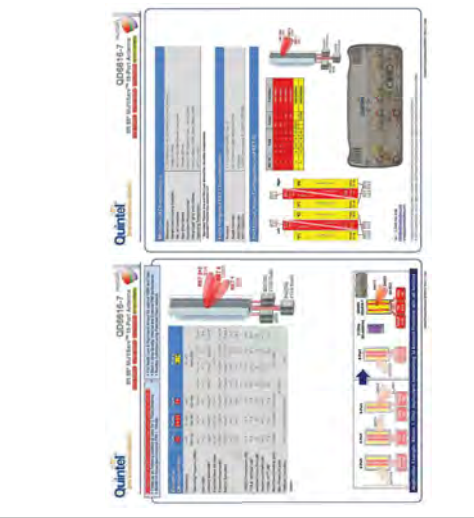


SHEET TITLE:
EQUIPMENT DETAILS

SHEET NUMBER:
C-9

REVISION:
H

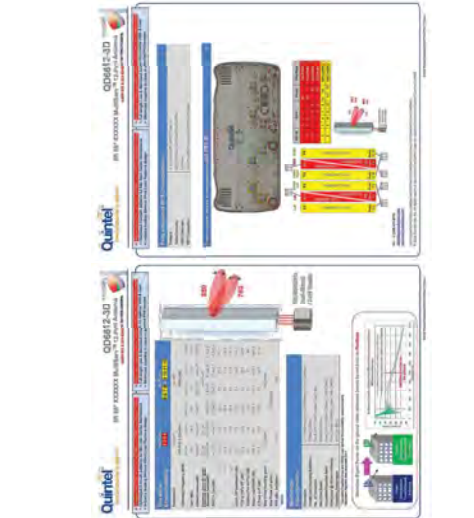
TEP #:
31-4190-336174



3 PROPOSED QUINTEL - QD8616-7 DETAIL
 SCALE: N.T.S.



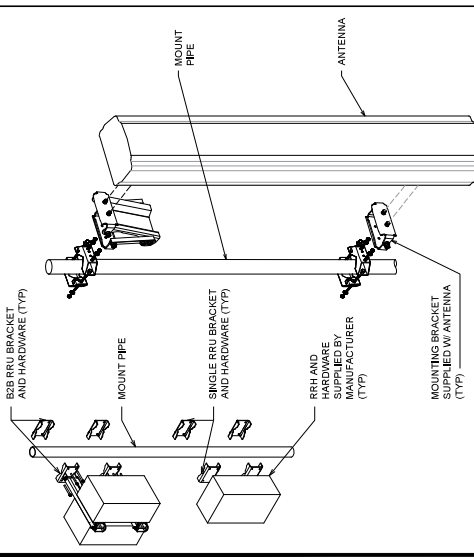
6 PROPOSED RRUS 4478 B14 DETAIL
 SCALE: N.T.S.



2 PROPOSED QUINTEL - QD8612-3D DETAIL
 SCALE: N.T.S.



5 PROPOSED ERICSSON AIR6419 B77G DETAIL
 SCALE: N.T.S.



1 EQUIPMENT MOUNTING DETAIL
 SCALE: N.T.S.



4 PROPOSED ERICSSON - AIR6449 B77D DETAIL
 SCALE: N.T.S.

1903 WRIGHT PLACE, SUITE 140
CARLSBAD, CA 92008

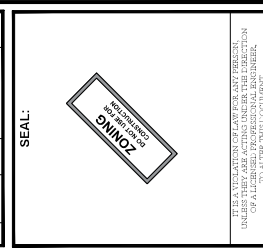
5005 EXECUTIVE PARKWAY
SAN ANTONIO, CA 78283

4711 WILSON AVENUE, SUITE 200
SAN ANTONIO, TX 78201
OFFICE (481) 285-0036
www.tegpro.net

FIRSTNET/AT&T ID: CCL05639
ALVARADO ST
& CALLAWAY ST
440 PERALTA
PSTC #: CANC-SLEAN01
440 PERALTA AVENUE
SAN LEANDRO, CA 94577
(ALAMEDA COUNTY)
PROPOSED 80'-0"
MONOPINE TOWER

ISSUED FOR:

| REV | DATE | BY/IN | DESCRIPTION | QA |
|-----|----------|-------|-------------|------|
| 0 | 12-02-22 | 5502 | 2020RSG | TRMU |
| 1 | 01-03-23 | 5502 | 2020RSG | TRMU |
| 2 | 07-14-23 | 5502 | 2020RSG | TRMU |
| 3 | 07-18-24 | 6204 | 2020RSG | TRMU |



SHEET TITLE:
EQUIPMENT DETAILS

SHEET NUMBER:
C-10

REVISION:
H

TEP #:
31-4190-336174

3 PROPOSED RRUS 2012 B29 DETAIL
SCALE: N.T.S.

2 PROPOSED RRUS 8843 B2/B66A DETAIL
SCALE: N.T.S.

RADIO 8843 B2 B66A

RAYCAP - DCS-48-60-24-8C-EV
SIZE: 10.243 x 2.5 IN.
NOMINAL OPERATING VOLTAGE: 48 VDC
NOMINAL OPERATING CURRENT: 1.007 A
WIND LOADING: 190 MPH GUST (213.6 LBS)
CONTRACTOR TO USE "THREAD LUBRICANT" ON MOUNTING BOLTS DURING INSTALLATION

1 PROPOSED RRUS 4415 B30 DETAIL
SCALE: N.T.S.

RRUS 4415 B30

RRUS 4415 B30 CONNECTION INTERFACES

4 PROPOSED RRUS 4415 B30 DETAIL
SCALE: N.T.S.

LARSON MONO-PINE CAMOUFLAGE

MODERATE APPLICATIONS (P=40 FT < (100 FT HEIGHT)

40 FT (Primary) 70 FT (Secondary) 70 FT (Secondary) 80 FT (Primary)

INNOVATORS OF CONCEALMENT SOLUTIONS

LARSON ANTENNA SOCKS AND SPECIALTY BRANCHES

ANTENNA + SOCK + BRANCHES

A combination of Larson antenna socks and branches creates a nearly invisible antenna array. Each of these trees is equipped with (9) sock tubes in one foot wide antenna at the top rod center.

RF-Friendly Larson Antenna Socks are vital to camouflage antennas when the canopy of the tree & the addition of Larson Antenna branches can create complete concealment.

INNOVATORS OF CONCEALMENT SOLUTIONS

LARSON MONO-PINE OPTIONS

STANDARD PINE BARK

- These can be finished with realistic bark, painted brown, or camouflage green to mimic bark.
- Bark is attached and secured to the pole and secured with a strong bond between bark and the generator pole.

STANDARD ELM BARK

- Camouflage is available in different colors and diameters to achieve the most realistic look in any area.

PREMIUM PINE BARK

- Bark is attached and secured to the pole and secured with a strong bond between bark and the generator pole.

INNOVATORS OF CONCEALMENT SOLUTIONS

1903 WRIGHT PLACE, SUITE 140
CARLSBAD, CA 92008

5005 EXECUTIVE PARKWAY
SAN RAMON, CA 94583

TOWER ENGINEERING PROFESSIONALS
4710 UNIVERSITY AVENUE
PACIFIC PALMS, CA 92651
OFFICE (481) 285-0036
www.tesp.com

FIRSTNET/AT&T ID: CCL05639
ALVARADO ST
& CALLAWAY ST
PSTC #: CANC-SLEAN01
440 PERALTA
440 PERALTA AVENUE
SAN LEANDRO, CA 94577
(ALAMEDA COUNTY)
PROPOSED 80'-0"
MONOPINE TOWER

ISSUED FOR:

| REV | DATE | BY | DESCRIPTION | QA |
|-----|----------|-----|-------------|------|
| 0 | 12-02-22 | 550 | 2020/05 | TRAU |
| 1 | 01-10-23 | 550 | 2020/05 | TRAU |
| 2 | 02-02-23 | 550 | 2020/05 | TRAU |
| 3 | 11-16-23 | 550 | 2020/05 | TRAU |
| 4 | 07-18-24 | COM | 2020/05 | TRAU |

SEAL:

THE SEALED DOCUMENT IS VALID FOR ONLY ONE YEAR.
UNLESS THEY ARE ACTING UNDER THE DIRECTION
OF A LICENSED PROFESSIONAL ENGINEER.

SHEET TITLE:
CONCEALMENT DETAILS

SHEET NUMBER:
C-11

REVISION:
H

TEP #: 31-4190-336174

2 ANTENNA SOCK DETAILS
SCALE: N.T.S.

1 MONOPINE CAMOUFLAGE DETAILS
SCALE: N.T.S.



1903 WRIGHT PLACE, SUITE 140
CARLSBAD, CA 92008



5005 EXECUTIVE PARKWAY
SAN RAMON, CA 94583



TOWER ENGINEERING PROFESSIONALS
4110 CENTRAL EXPWAY
FREMONT, CA 94538
OFFICE (480) 285-0036
www.tegpro.net

FIRSTNET/AT&T ID: CCL06539
ALVARADO ST
& CALLAWAY ST

PSTC #: CANC-SLEAN01
440 PERALTA

440 PERALTA AVENUE
SAN LEANDRO, CA 94577
(ALAMEDA COUNTY)

PROPOSED 80-J*
MONOPINE TOWER

| REV | DATE | BY | DESCRIPTION | QA |
|-----|----------|-----|-------------|------|
| 0 | 12-09-22 | 550 | 200KGS | TR00 |
| 1 | 01-03-23 | 550 | 200KGS | TR00 |
| 2 | 11-16-23 | 584 | 200KGS | TR00 |
| 3 | 07-18-24 | 606 | 200KGS | TR00 |

SEAL:



IT IS A VIOLATION OF LAW FOR ANY PERSON
UNLESS THEY ARE ACTING UNDER THE DIRECTION
OF A LICENSED PROFESSIONAL ENGINEER

SHEET TITLE:
AC PANEL
SCHEDULE

SHEET NUMBER:
E-1

REVISION:
H

TEP #:
31-4190-336174

| AC POWER PANEL A (PROPOSED) | | | | | | | | | | | |
|--|------|------|------|------|--------------|---------------------|-------------|------|--|------|---------------------|
| 120/240 VOLTS, 1-PHASE, 3-WIRE, 200A | | | | | | | | | | | |
| MAIN BREAKER RATING (A): | | | 200 | | | SYSTEM VOLTAGE (V): | | | 240 | | |
| DESCRIPTION | VA | c/nc | BKR | POSN | L1 | L2 | POSN | BKR | c/nc | VA | DESCRIPTION |
| RECTIFIERS #1 & 2 | 1410 | c | 30/2 | 1 | 2820 | | 2 | 30/2 | c | 1410 | RECTIFIERS #3 & 4 |
| | 1410 | c | | 3 | | 2820 | 4 | | c | 1410 | |
| RECTIFIERS #5 & 6 | 1410 | c | 30/2 | 5 | 2820 | | 6 | 30/2 | c | 1410 | RECTIFIERS #7 & 8 |
| | 1410 | c | | 7 | | 2820 | 8 | | c | 1410 | |
| RECTIFIERS #9 & 10 | 1410 | c | 30/2 | 9 | 2820 | | 10 | 30/2 | c | 1410 | RECTIFIERS #11 & 12 |
| | 1410 | c | | 11 | | 2820 | 12 | | c | 1410 | |
| SPARE / OFF | 0 | nc | 30/2 | 13 | 0 | | 14 | 30/2 | nc | 0 | SPARE / OFF |
| | 0 | nc | | 15 | | 0 | 16 | | nc | 0 | |
| SPARE / OFF | 0 | nc | 30/2 | 17 | 0 | | 18 | 30/2 | nc | 0 | SPARE / OFF |
| | 0 | nc | | 19 | | 0 | 20 | | nc | 0 | |
| SPARE / OFF | 0 | nc | 30/2 | 21 | 0 | | 22 | 30/2 | nc | 0 | SPARE / OFF |
| | 0 | nc | | 23 | | 0 | 24 | | nc | 0 | |
| BLANK | | | | 25 | 1000 | | 26 | 20/1 | nc | 1000 | *GEN BLOCK HEATER |
| BLANK | | | | 27 | | 650 | 28 | 20/1 | nc | 650 | *GEN BATT CHARGER |
| PTLC RECEPTACLES | 720 | nc | 20/1 | 29 | 900 | | 30 | 20/1 | nc | 180 | WUC GFCI |
| PHASE TOTALS (VA): | | | | | 10360 | | 9110 | | | | |
| PHASE TOTAL S (A): | | | | | 86 | | 76 | | | | |
| CURRENT PER PHASE W/ 125% Continuous Loads(A): | | | | | 104 | | 94 | | Amperes/phase cannot exceed main breaker rating | | |
| PANEL TOTAL (VA): | | | | | 19470 | | | | Legend: c = continuous, nc = non-continuous | | |
| PANEL TOTAL W/ 125% Continuous Loads (VA): | | | | | 23700 | | | | | | |
| TOTAL LOAD FOR GEN OPERATION: | | | | | 17820 | | | | *Generator loads are not in operation while generator is running | | |

PROPOSED LOADING = 23.7 KVA

1 PROPOSED AC PANEL SCHEDULE
SCALE: N/A



FIRSTNET/AT&T ID: CCL05639
ALVARADO ST & CALLAWAY ST

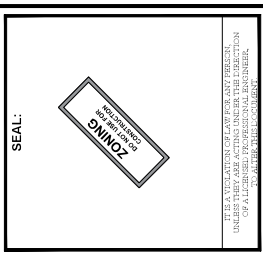
PSTC #: CANC-SLEAN01
440 PERALTA

440 PERALTA AVENUE
SAN LEANDRO, CA 94577
(ALAMEDA COUNTY)

PROPOSED 80'-0" MONOPINE TOWER

ISSUED FOR:

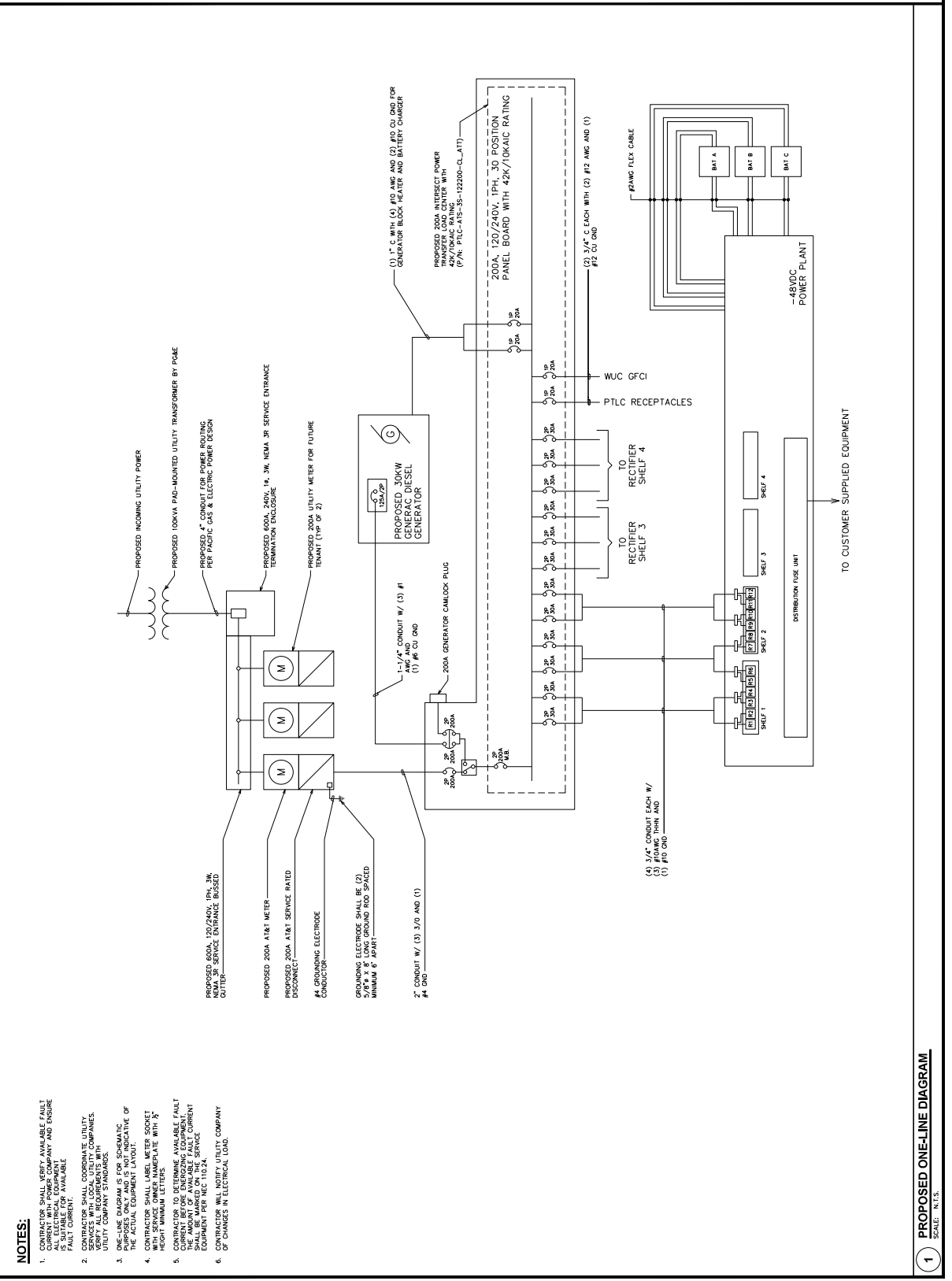
| REV | DATE | BY/IN | DESCRIPTION | QA |
|-----|----------|-------|-------------|------|
| 0 | 12-09-22 | 500 | 200WGS | TRMU |
| 1 | 01-03-23 | 500 | 200WGS | TRMU |
| 2 | 11-16-23 | 500 | 200WGS | TRMU |
| 3 | 07-18-24 | 500 | 200WGS | TRMU |



SHEET TITLE: **ONE-LINE DIAGRAM**

SHEET NUMBER: **E-2** REVISION: **H**

TEP #: 314190336174



1 PROPOSED ONE-LINE DIAGRAM
 SCALE: N/A