

PARKSL

Parking Program Update

City Council Presentation
City of San Leandro
July 5, 2022



Downtown Parking Management Plan

Guiding Principles

- Downtown San Leandro is a valuable community asset
- Simplify parking operations
- Make downtown accessible to all users through multiple modes
- Optimize parking in support of downtown businesses
- Prioritize residential parking for residents
- Manage parking with an understanding of systemic and fiscal impacts

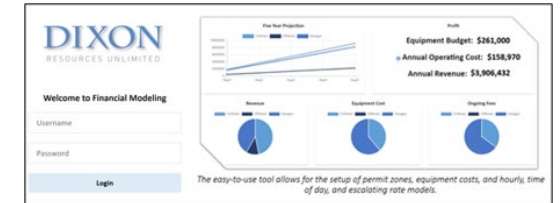
Project Background (July 2017 - Current)

- Downtown Parking Management Plan
- Employee parking permit program
- Parking technology improvements
- Municipal code update
- Parking rate update
- Shared parking
- ParkSL
 - 2018 CPPA Public Parking Program of the Year
- Contracted Parking Enforcement
- Farmer's Market relocation

What's Next?

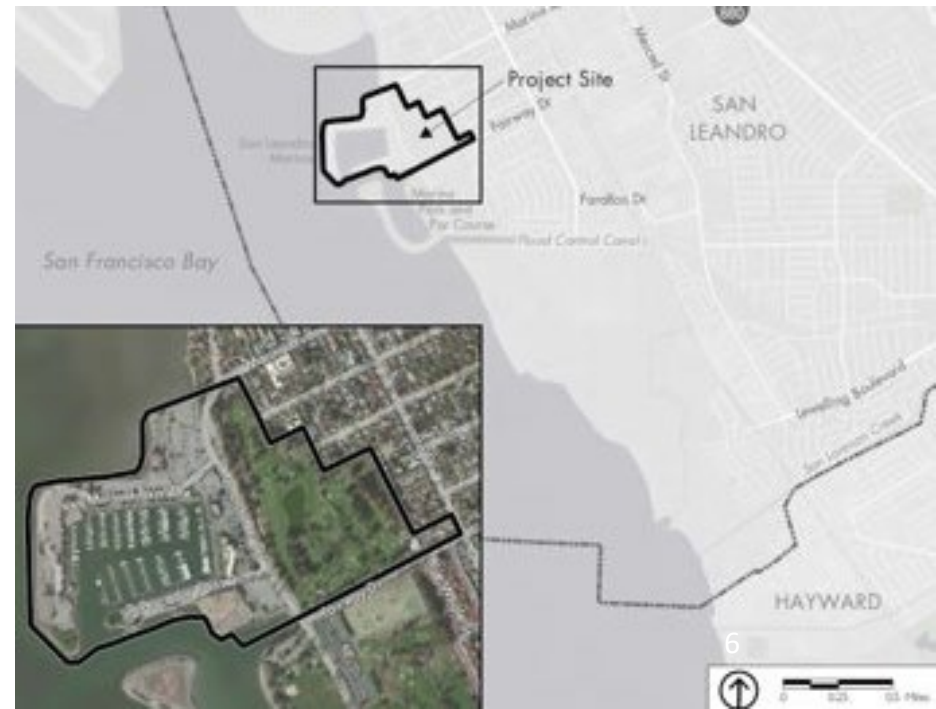
- MacKay Meter Modem Upgrade and incrementally replace existing meters
 - Evaluate hourly rate increase
- Time Zones - Continuity
- Residential Permit Parking Updates





What's Next? (continued)

- Parking Garage Updates
- EV Infrastructure
- Financial Modeling
- Rapid LPR tool



What's Next? (continued)

- Update the 2017 Downtown Parking Management Plan
- Shoreline/TDM Plan

Questions?

SL@DixonResourcesUnlimited.com