



CITY OF SAN LEANDRO INFRASTRUCTURE INVESTMENT

March 2017

Agenda

- Introduction to Mobilitie
- Project Introduction and City Benefits
- Current Plan for City of San Leandro Deployment
- Process proposal

About Mobilitie



Indoor and outdoor Small Cell networks use Femtocell, Picocell, and Microcell technologies with combined radio heads to provide improved 3G, 4G, LTE, and Wi-Fi service to enterprises and real estate properties



Wireless and Wireline solutions that provide high data bandwidth connectivity to boost throughput and capacity of new and existing networks



High-density Wi-Fi networks that provide ubiquitous internet access to all wireless enable mobile and fixed devices



Indoor and outdoor neutral host Distributed Antenna Systems that provide improved coverage and capacity for all wireless carriers at large venues and in the most challenging locations across the country



Multi-carrier communication towers that enable improved wireless service to carriers across their nationwide macro networks based on our industry leading Lease-to-Suit® model



Our program allows wireless carriers to focus on their core business by having Mobilitie manage third party activity on tower sites

Mobile Data Trends and Demand Drivers

84%

OF TODAY'S SHOPPERS USE THEIR SMARTPHONE TO HELP SHOP IN-STORE

80%

MORE THAN OF VOICE CALLS ORIGINATE INDOORS

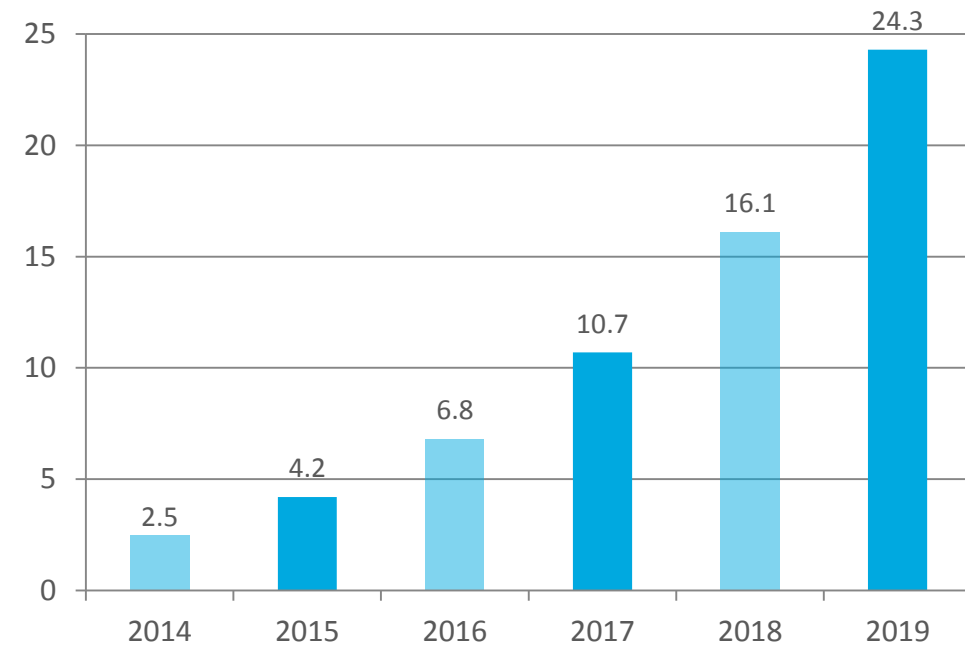
DATA CONSUMPTION

30 MILLION MB OF DATA ARE USED EVERY 5 MINUTES THROUGH MEDIA STREAMING

56%

OF MOBILE DATA IS VIDEO

MOBILE DATA TRAFFIC (EB/MONTH)



U.S. MOBILE DATA USAGE

90%

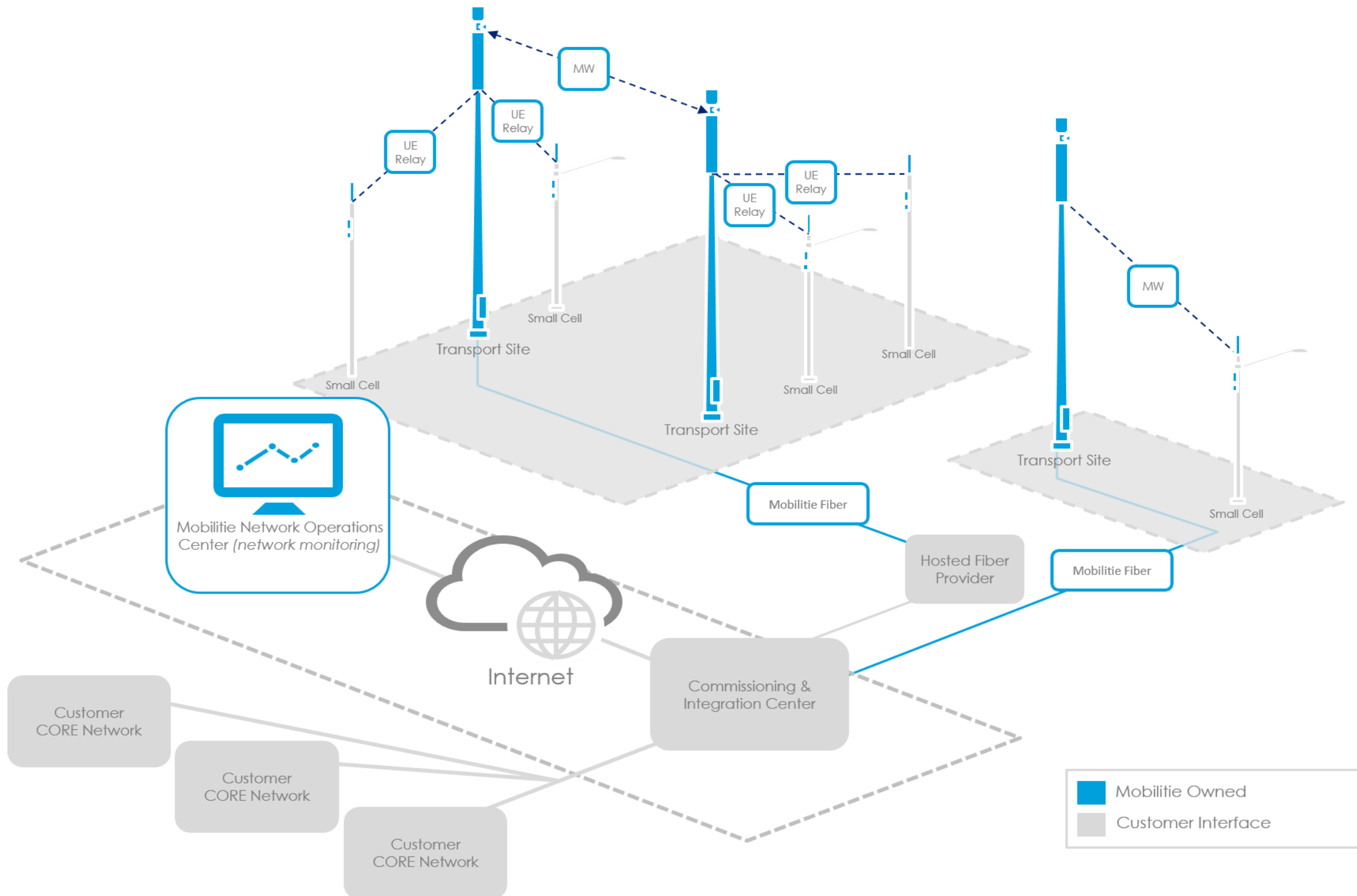
OF HOUSEHOLDS USE WIRELESS SERVICE

650%

INCREASE EXPECTANCY OF MOBILE DATA FROM 2014 TO 2018

Source: Cisco VNI Mobile, 2016

Holistic Network Design



About The Effort

Mobilitie

Fund, deploy and manage wireless infrastructure solutions to meet the needs of the City and its citizens by enabling connectivity.

Mobilitie to lead largest small cell deployment in US

Enhancing coverage in all 50 US states

- Phased deployment of **~70,000** small cell sites
- All small cell sites to be operational within **14 months**

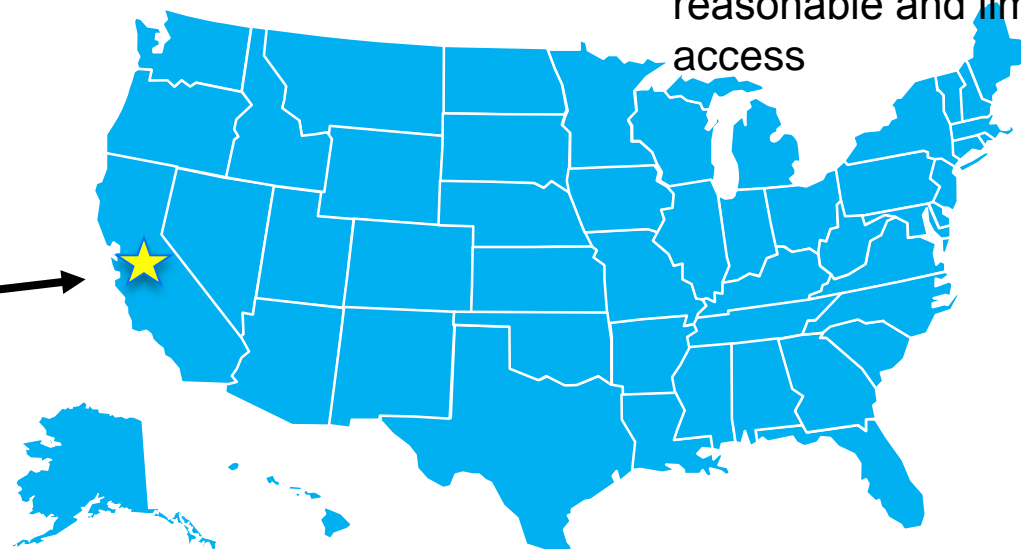
Infrastructure options include:

- Utility poles
- Light posts
- Traffic signal posts

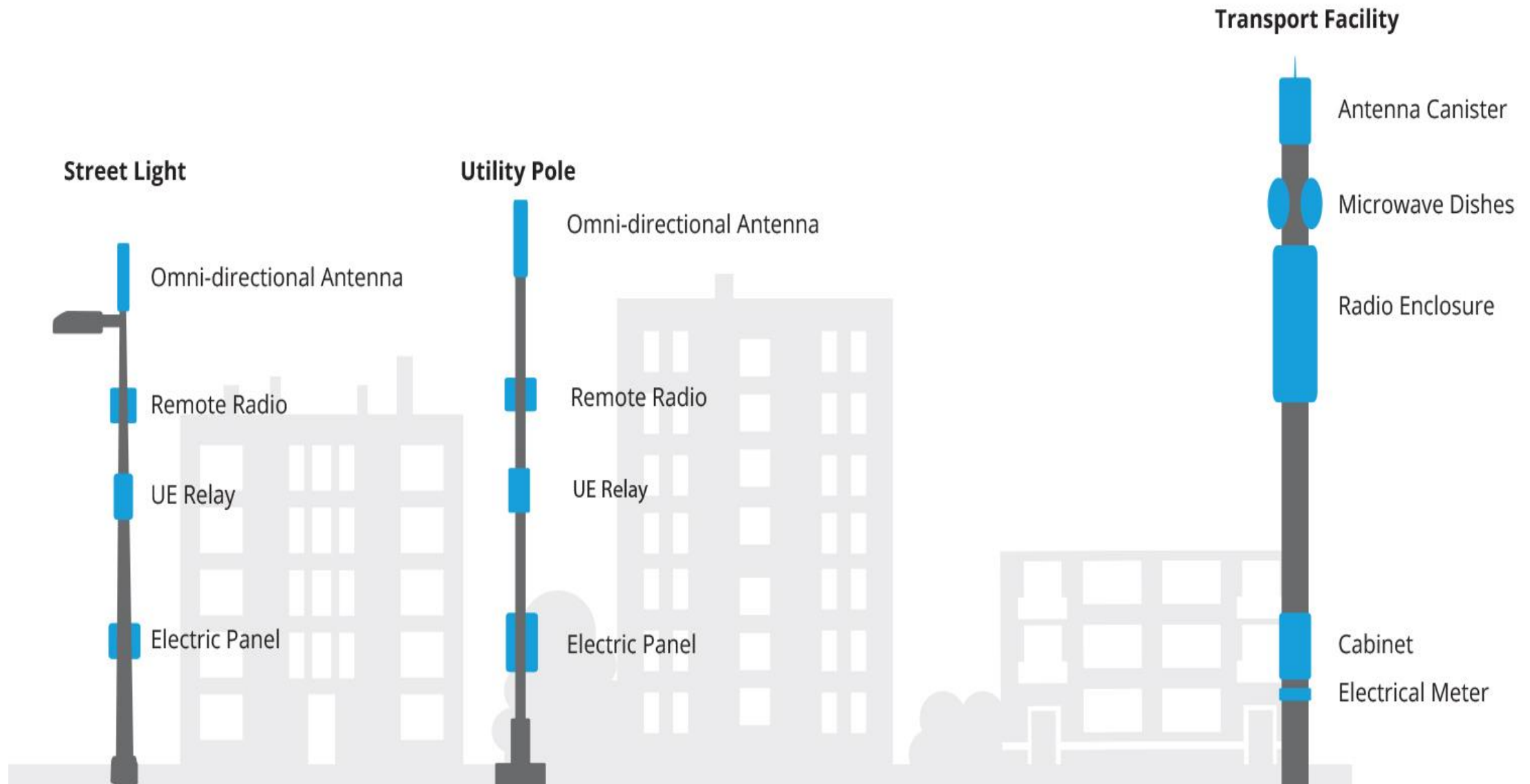
Mobilitie's Regulatory Status

- December 2010 – Certificate of Public Convenience and Necessity (“CPCN”) to Provide Facilities-Based and Resold Competitive Local Exchange Service, Access, and Interexchange Service in the State of California Light posts
- California Public Utilities Code § 7901.1 – local authorities may regulate telephone corporations’ access to the public rights-of-way, but such regulations must be reasonable and limited to “time, place, and manner” of access

Mobilitie is a registered CLEC in the State of California



Design types



The New Solution – Small Cells



Los Angeles, California

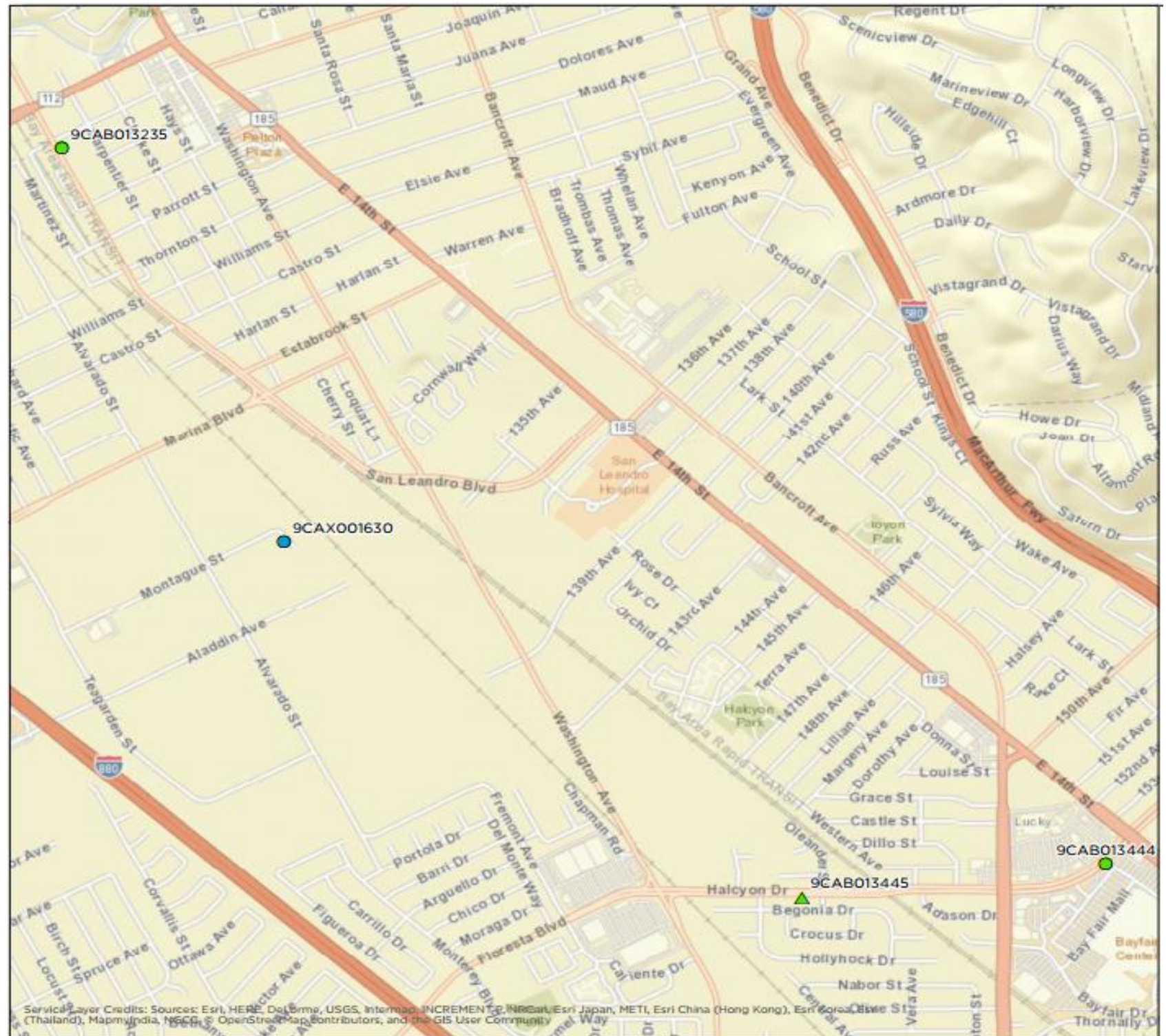


Atlanta, Georgia

City of San Leandro Sites

Projected deployments of Small Cell & Transport over the next 18 months in the *City of San Leandro*. The hybrid network will enhance overall connectivity, in addition to providing capital investment and employment opportunities.

- 1 Proposed Transport Pole
- 2 Proposed Small Cell: New Poles
- ▲ 1 Proposed Small Cell: Attachment



Locations and quantity may adjust

Proposed Small Cell Attachment Design 1



Halcyon Dr. & Oleander St.
San Leandro, CA 94578

Proposed Small Cell Attachment Design 2



Halcyon Dr. & Oleander St.
San Leandro, CA 94578

Proposed Small Cell Attachment Design 3



San Leandro Blvd. & W. Estudillo Ave
San Leandro, CA 94577

Proposed Small Cell New Pole



Fairmont Drive & E 14th Street
San Leandro, CA 94578

Proposed Transport Pole



Alvarado St. & Montague Ave.
San Leandro, CA 94577

Thank you



WIRELESS COVERAGE SOLUTIONS