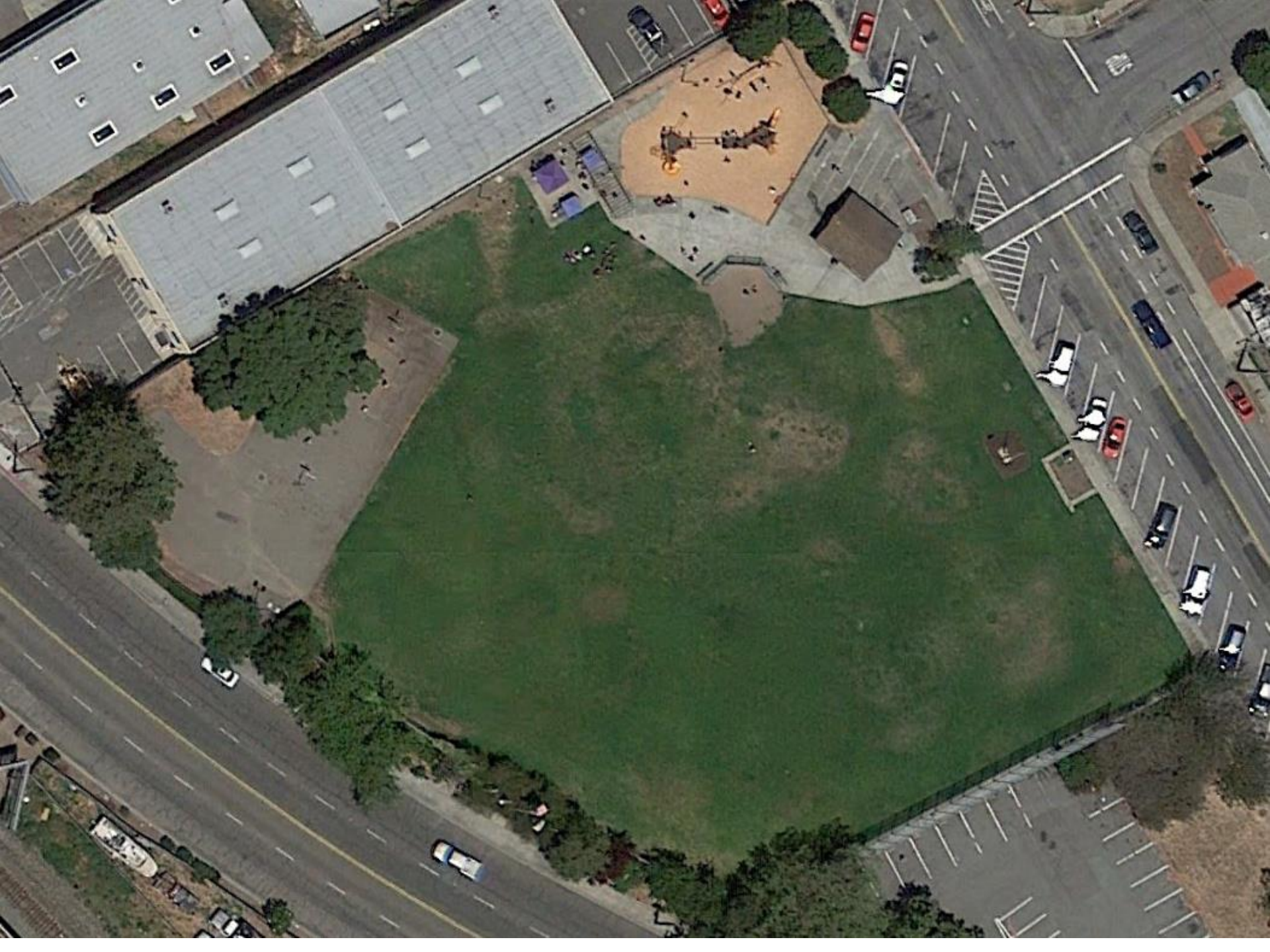




# Siempre Verde Park Rehabilitation Project

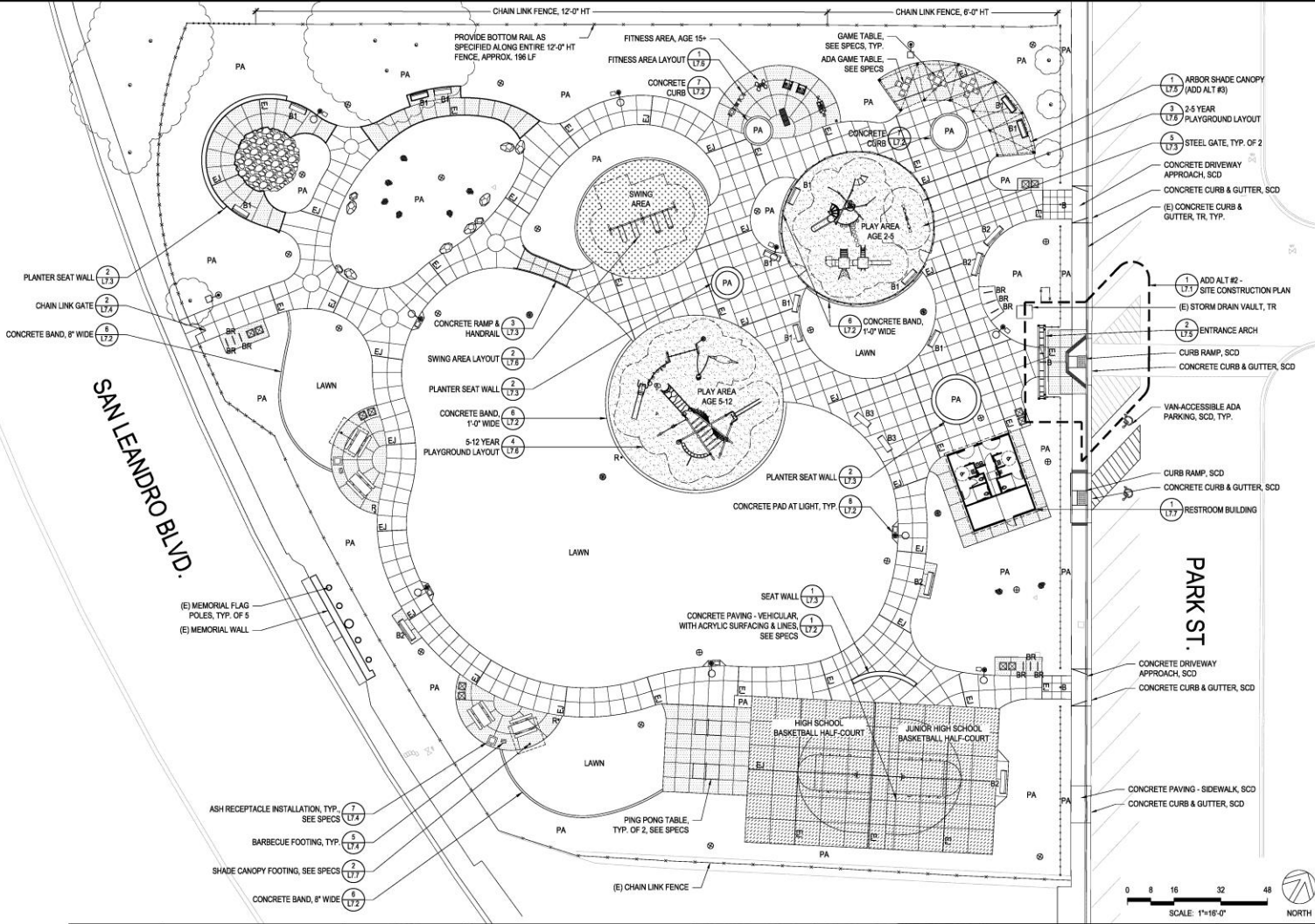


**SITE CONSTRUCTION LEGEND**

- CONCRETE PAVING - VEHICULAR (1) (L7.2)
- EXPANSION JOINT, TYP. (2) (L7.2)
- SCORE JOINT, TYP. (3) (L7.2)
- CONCRETE PAVING - PEDESTRIAN (1) (L7.2)
- FLAGSTONE PAVING (9) (L7.2)
- RESILIENT SURFACING, PLAYGROUND AREA (3) (L7.2)
- RESILIENT SURFACING, SWING AREA (3) (L7.2)
- CONCRETE PAVING - VEHICULAR, WITH ACRYLIC SURFACING & LINES, SEE SPECS (1) (L7.2)
- BOULDER (6) (L7.4)
- TRASH & RECYCLING RECEPTACLES, SEE SPECS (7) (L7.4)
- PICNIC TABLE, SEE SPECS (2) (L7.4)
- BENCH, WITH BACK, 6-FT, SEE SPECS (B1)
- BENCH, WITH BACK, 8-FT, SEE SPECS (B2)
- BENCH, WITHOUT BACK, 6-FT, SEE SPECS (B3)
- CATCH BASIN, SEE CIVIL DRAWINGS
- ROCK OUTFALL, SEE CIVIL DRAWINGS
- LIGHT, SEE ELECTRICAL DRAWINGS
- (E) LIGHT, SEE ELECTRICAL DRAWINGS
- ELECTRICAL BOX, SEE ELECTRICAL DRAWINGS
- RECEPTACLE ON POST, SEE ELECTRICAL DRAWINGS
- BASKETBALL HOOP, BACKBOARD & POST, SEE SPECS
- BIKE RACK, SEE SPECS (BR)
- FOLDING BOLLARD (B)
- STEEL FENCE (4) (L7.3)
- CHAIN LINK FENCE, 4'-0" HT (1) (L7.4)
- CHAIN LINK FENCE, 6'-0" HT (1) (L7.4)
- EXISTING TREE TO REMAIN
- (E) EXISTING
- PA PLANTING AREA
- TR TO REMAIN
- TYP TYPICAL

**SITE CONSTRUCTION NOTES**

1. EXPANSION JOINTS: INSTALL EXPANSION JOINTS IN CONCRETE PAVING AT 30'-0" O.C. MAX AND AS SHOWN ON DRAWINGS. INSTALL EXPANSION JOINTS AT ALL LOCATIONS WHERE CONCRETE PAVING ABUTS WALLS OR OTHER VERTICAL SURFACES.
2. SAW-CUT (E) CONCRETE AND AC PAVING AS REQUIRED TO ACCOMMODATE NEW CONSTRUCTION.
3. PROJECT STAKING: ALL PROPOSED SITE FEATURES SHALL BE STAKED BY THE CONTRACTOR IN FIELD FOR REVIEW BY ENGINEER PRIOR TO CONSTRUCTION. ALL CURVES SHALL BE SMOOTH AND CONTINUOUS WITH CAREFULLY MATCHED TANGENTS.
4. REFER TO SPECIFICATIONS FOR SITE FURNISHINGS, SPORTS EQUIPMENT, AND FINISHES.
5. SEE COVER SHEET L0 FOR ADDITIONAL ABBREVIATIONS.



**CITY OF SAN LEANDRO**  
INCORPORATED 1871

**HARRIS DESIGN**  
Landscape Architecture  
Urban Design  
785 Filgar Avenue  
Berkeley, CA 94712  
T 510 847 3782  
www.hcd.com

BEFORE YOU BID, CALL UNDERGROUND SERVICE ALERT (800) 485-5844

IT SHALL BE THE CONTRACTOR'S RESPONSIBILITY TO DETERMINE THE ACCURACY OF ALL UNDERGROUND UTILITIES SHOWN FROM REPUTABLE SOURCES. THE CITY OF SAN LEANDRO MAKES NO GUARANTEE OR WARRANTY OF THE ACCURACY OF THIS INFORMATION.

**CITY OF SAN LEANDRO**

NO.	DATE	REV	DESCRIPTION	DESIGNED BY	DATE
2-	27-15		DD SUBMITTAL	LY/ZN	04-24-15
3-	27-15		60% CD		
4-	24-15		100% CD		

**SIEMPRE VERDE PARK**  
**SITE CONSTRUCTION PLAN**  
**L2**

AT FULL SIZE  
THIS LINE MEASURES 1"  
SHEET # OF #  
JOB NO. 2015.0270  
SCALE: 1/16" = 1'-0"  
DWG. CASE 1002

# Base Design

- Reduced lawn area, Bay-Friendly landscaping, water-efficient irrigation system
- Additional trees
- Pedestrian pathways, benches, and seat walls throughout park
- Entrance arch on Park Street side
- New restroom
- New play areas (ages 2-5, ages 5-12, plus a swing area)
- Fitness area with equipment similar to those at Marina parcourse
- Game tables
- Ping pong tables
- Quiet garden
- Two small picnic areas with BBQ grills
- Two basketball half-courts to replace the existing full basketball court
- Decorative LED pathway lights to replace existing flood lights
- Minor improvements to veterans memorial on San Leandro Boulevard

# Siempre Verde Park

San Leandro, CA April 22, 2015 83064-1-4



*landscape structures*



**Better playgrounds.  
Better world.®**

[playsi.com](http://playsi.com)

Proudly presented by:



**R•SS**  
Recreation Equipment

# Siempre Verde Park

San Leandro, CA April 22, 2015 83064-1-4R



*landscape*  
structures®



**Better playgrounds.  
Better world.®**

[playsi.com](http://playsi.com)

Proudly presented by:



**ROSS**  
Recreation Equipment

## Water Concerns

- Currently restricted to watering two days per week
- Restrictions may get tighter if drought continues
- Cost of water continues to rise

## Additive Bid Items (to be constructed depending on bids received and project budget)

- Irrigation well (\$221K)
- Bulb-out for Park Street crossing at Cherrywood Avenue (\$36K)
- Shade canopy for game table area (\$60K)

## Schedule

- Project Advertisement: May 25, 2015
- City Council Award of Construction Contract: July 20, 2015
- Construction: Mid-August 2015 through late-May 2016

## Investment in the Community (\$3.56M Total)

- \$876,600 – Housing and Community Development (HCD) grant
- \$1,538,000 – Park Development Fees
- \$1,145,594 – General Funds



# Questions and Comments