

Bay Fair Community Based Transportation Plan (CBTP) BPAC Presentation

April 29, 2025



What is a CBTP?

A **Community-Based Transportation Plan (CBTP)** is a transportation planning process that focuses on addressing the mobility needs of underserved communities through direct community engagement.

CBTPs include:

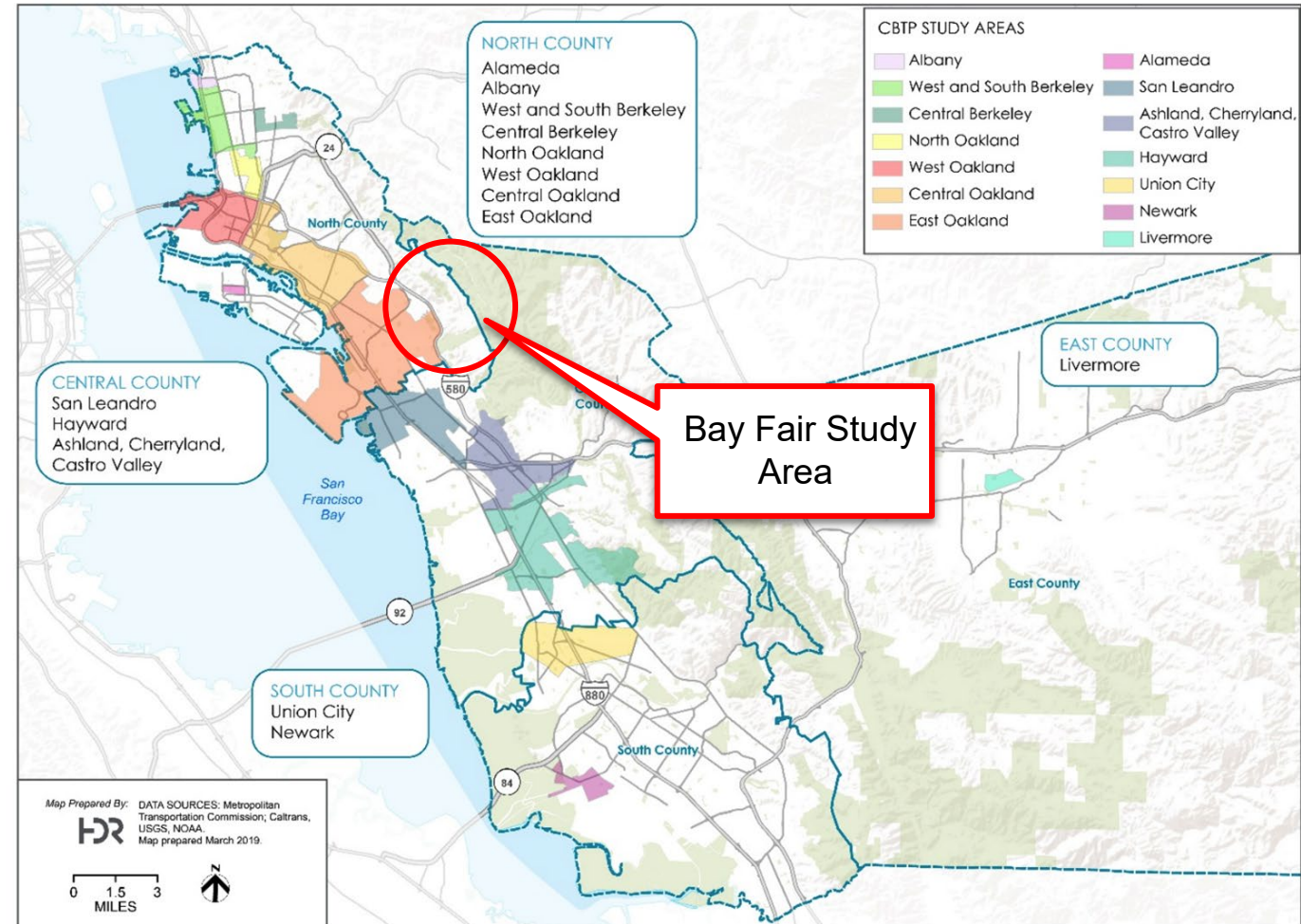
- Demographic analysis of the area
- List of community-prioritized transportation gaps and barriers
- Strategies or solutions to address these gaps
- Identification of possible funding sources
- List of stakeholders to implement the plan
- Documented results of community outreach strategies



Key Features of a CBTP

- **Community Engagement:** Residents, businesses, and stakeholders actively participate in identifying transportation challenges and solutions.
- **Equity Focus:** Prioritizes the needs of low-income and disadvantaged communities.
- **Multimodal Approach:** Considers various transportation modes, including public transit, walking, biking, and carpooling.
- **Project Identification:** Develops a list of recommended transportation improvements based on community input.
- **Funding and Implementation:** Helps secure funding and guide agencies in making targeted investments.

Figure 1-1: CBTP Study Areas



CBTP: Key Outcomes

Recommended Transportation Projects & Cost Estimates



**Pedestrian & Bicycle
Infrastructure Improvements**



**Bus Stop Amenities
and ADA Upgrades**



**Intersection
Improvements**



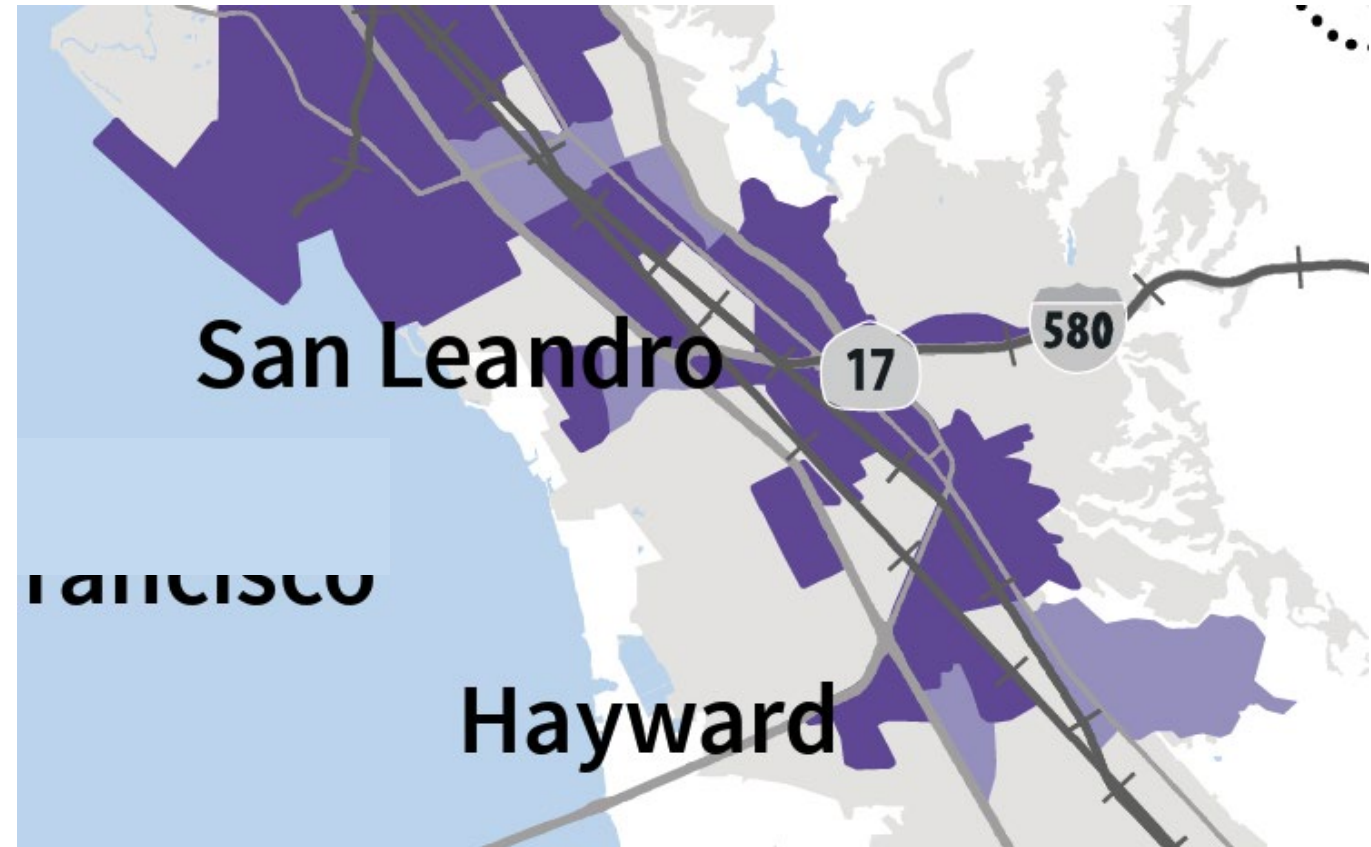
**Neighborhood Traffic
Calming & School Safety**

Focused on improvements within public rights-of-way; will not include recommendations on BART property or private properties

Bay Fair CBTP Project Overview and Goals

1. The Bay Fair CBTP is intended to ensure that all residents — especially those in **Equity Priority Communities (EPCs)** — have safe, reliable, and accessible transportation options.
2. The creation of the Bay Fair CBTP will identify **barriers to access and connectivity challenges**, engage local residents and organizations in the planning process, and **develop targeted solutions** to improve mobility.

Equity Priority Communities (EPCs) Plan Bay Area 2050+

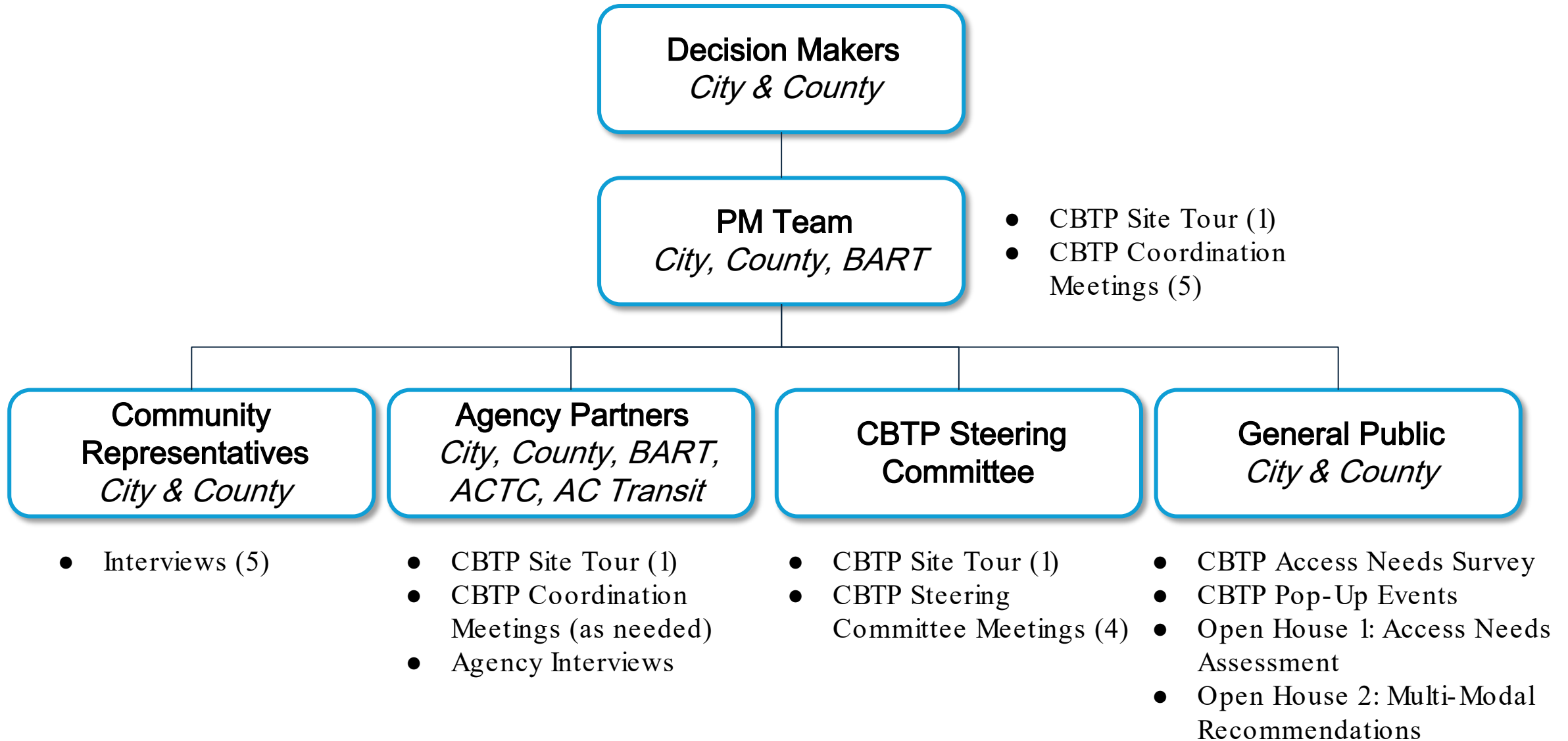




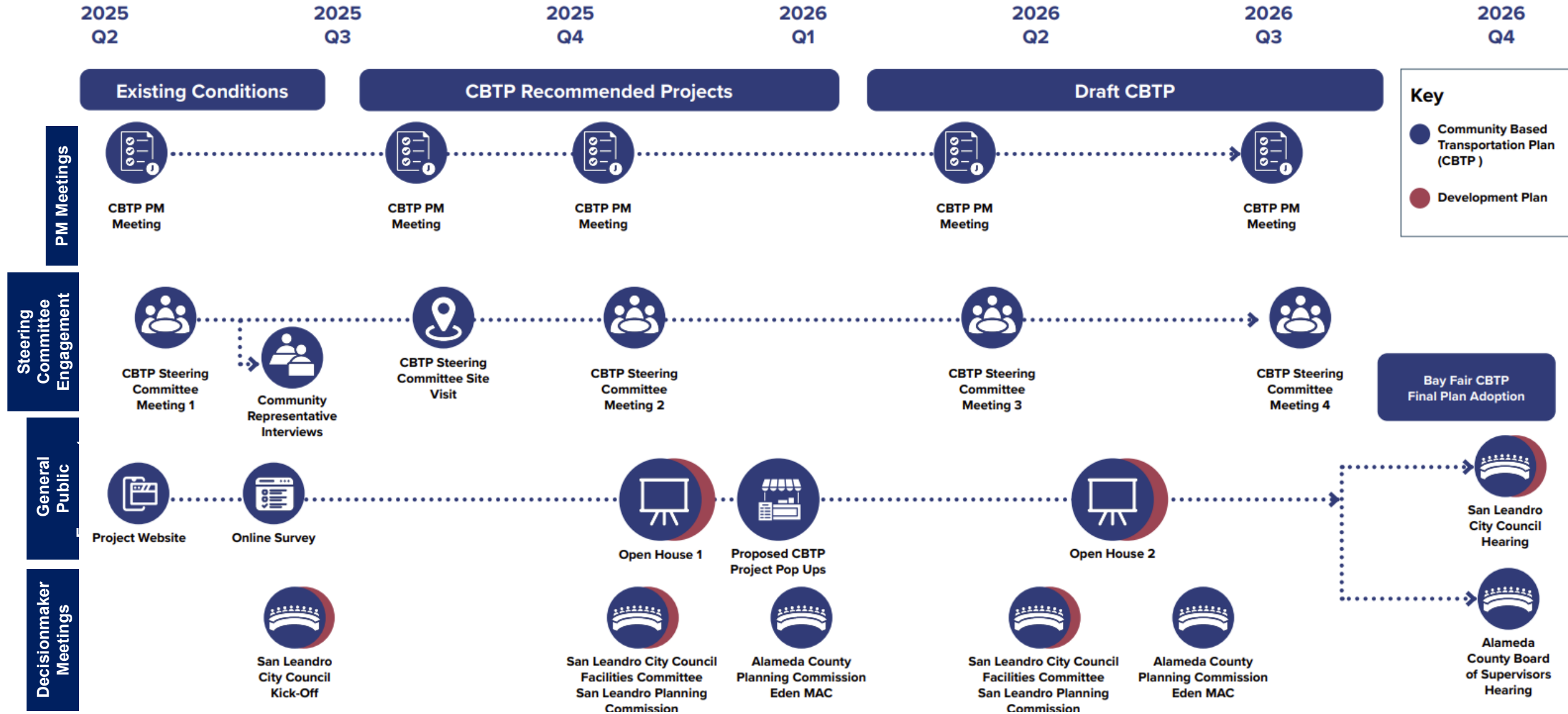
Work Plan and Steering Committee Role



Stakeholders



BAY FAIR TOD COMMUNITY BASED TRANSPORTATION PLAN (CBTP) TIMELINE



CBTP Steering Committee Purpose/Role

- Provide community-based insights on transportation needs and challenges.
- Ensure equitable representation of all stakeholders, including underrepresented groups.
- Help refine outreach strategies to reach priority populations.
- Serve as a liaison between the project team and the broader community.
- While this project runs parallel to the Bay Fair Development Plan, the steering committee provides focused input, guidance, and oversight for the CBTP only

CBTP Steering Committee Composition

- ACTC
- BART
- AC Transit
- Bike East Bay
- Alameda County BPAC
- City of San Leandro BPAC
- Eden MAC
- Ashland Community Association
- County CBO (TBD)

CBTP Steering Committee Meeting Frequency and Format

4 (virtual) meetings and 1 site visit

- Meeting 1: Introduction & existing conditions.
 - Website review, prep for survey, and site visit
- Site Visit (in person)
- Meeting 2: Discussion of community needs and potential projects.
 - Prep for Open House 1 and Pop Ups
- Meeting 3: Discussion of engagement and recommended projects.
 - Prep for Open House 2
- Meeting 4: Discussion of engagement outcomes and final recommendations.
 - Prep for decision-maker meetings

Next Steps

- CSL BPAC Selects Steering Committee Member
- Steering Committee Meeting 1 – May 2025
- BPAC Members Encouraged to Participate throughout Public Engagement Process and help spread the word about the Bay Fair CBTP