



Climate Action Plan (CAP) Update

San Leandro City Council

July 19, 2021

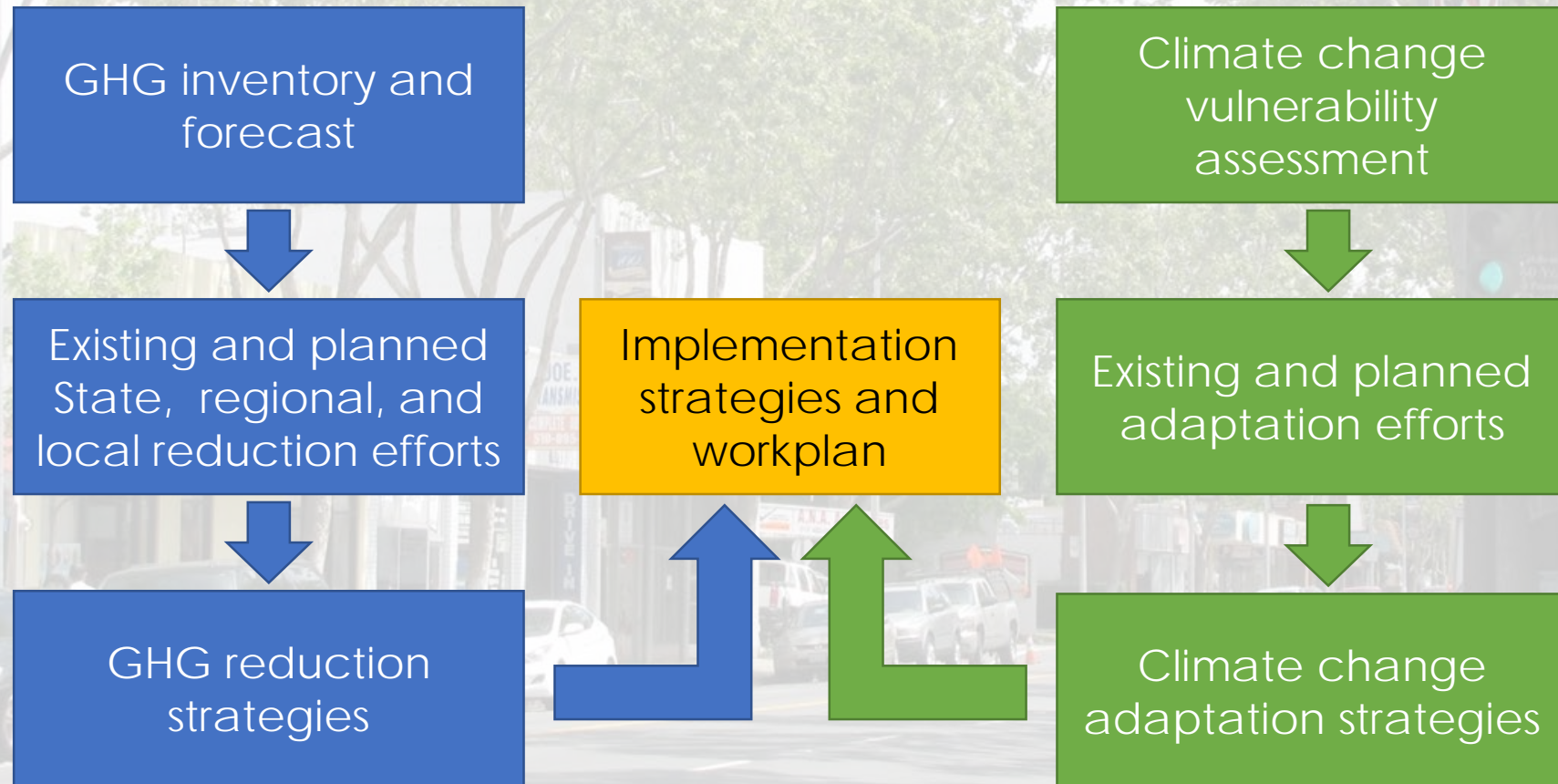
Climate Action Plan Overview

- Comprehensive strategy to reduce GHG emissions in San Leandro.
- First adopted in 2009.
- Update began in 2019.
 - Provide new and revised GHG emission reduction strategies.
 - Reduce post-2020 GHG emissions.
 - Enhance community resilience to climate hazards.
 - Support increased public health and equity.



CAP Structure

Guiding Principles: Equity and Justice



Integrating equity



Equity

Just and fair inclusion in a society in which all can participate, prosper, and reach their full potential.

- Equity is central to the just transition to a regenerative economy where peoples' well-being and livelihoods are assured.
- Equitable climate action must address systemic issues such as racism and prioritize people of color and low-income communities impacted first and worst by climate change.
- This requires a deep and broad input process from all communities, particularly those who have not been traditionally included or heard before.

What We Learned: GHG Inventories

Community members are using less energy.



Electricity sources and vehicles are cleaner.



Less waste generation.



Less water use.



Sector	2005	2017	Change
Energy	284,410	161,930	-43%
Transportation	363,550	344,290	-5%
BART	2,910	3,710	27%
Off-road	23,190	26,970	16%
Waste	46,910	34,860	-26%
Water and wastewater	-	1,540	-
Total	720,990	573,300	-20%

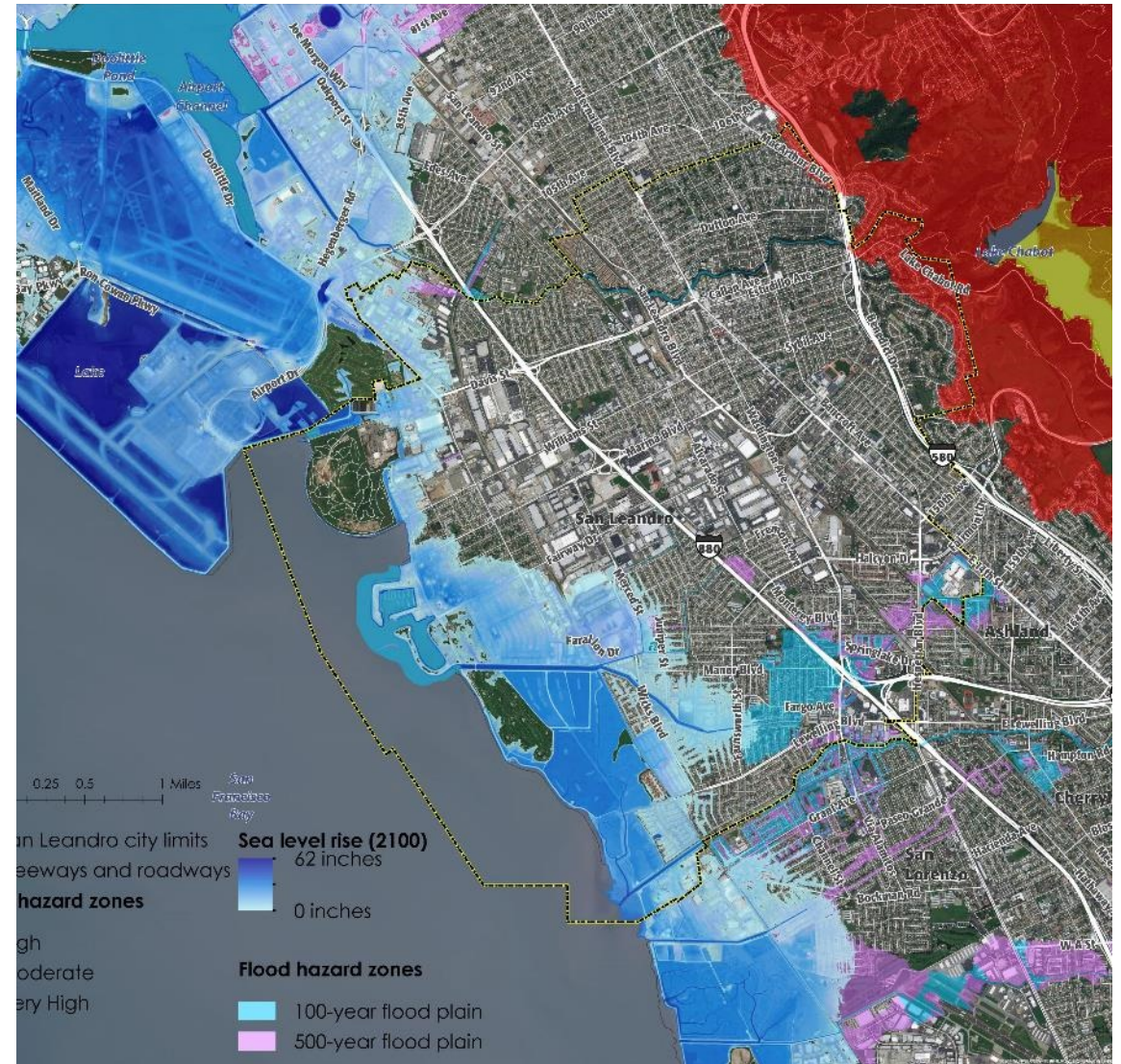
Existing and Planned Accomplishments

San Leandro's existing and planned regional and local efforts are expected to reduce community-wide emissions **18% below 2017 levels by 2050**, in combination with State activities.

	2017 MTCO ₂ E	2030 MTCO ₂ E	2050 MTCO ₂ E
Baseline (2005) emissions	720,990	720,990	720,990
Forecasted emissions	573,580	659,100	692,850
State reductions	-	-122,580	-218,490
East Bay Community Energy	-	-35,040	-0
Municipal energy efficiency retrofits	-	-30	-0
Streetlight LED retrofits	-	-10	-0
Renewable energy installations	-	-20	-0
Renewable diesel in City fleet	-	-10	-10
BART shuttles	-	-10	-10
Clean BART electricity	-	-3,650	-4,550
Reductions from all existing actions	-	-161,350	-223,060
Target emissions		432,590	144,200
Forecasted emissions with all existing and planned actions	573,580	497,750	469,780

Climate Change Vulnerability

- Substantial public health risk, especially for historically marginalized and frontline communities.
- Risk of damage to shoreline buildings and infrastructure
- Energy, water, and wastewater services may be disrupted.



Public Engagement

- 150 1:1 and small group meetings with indigenous groups, parents, youth, labor, businesses, developers, faith, and other stakeholders.
- Online community survey.
- Climate board game.
- February 20, 2020 workshop.
- Consider.it virtual platform.
- October 6, 2020 virtual workshop.



Online Survey Results

Community members provide direct feedback on important topics for San Leandro.

- Energy efficiency and switch to renewables.
- Reducing, reusing, and recycling.
- Conservation of all resources.
- Community preparation and response to hazardous conditions.
- Protect essential infrastructure and services.
- Support frontline communities.
- Reduce auto dependency and energy efficiency.

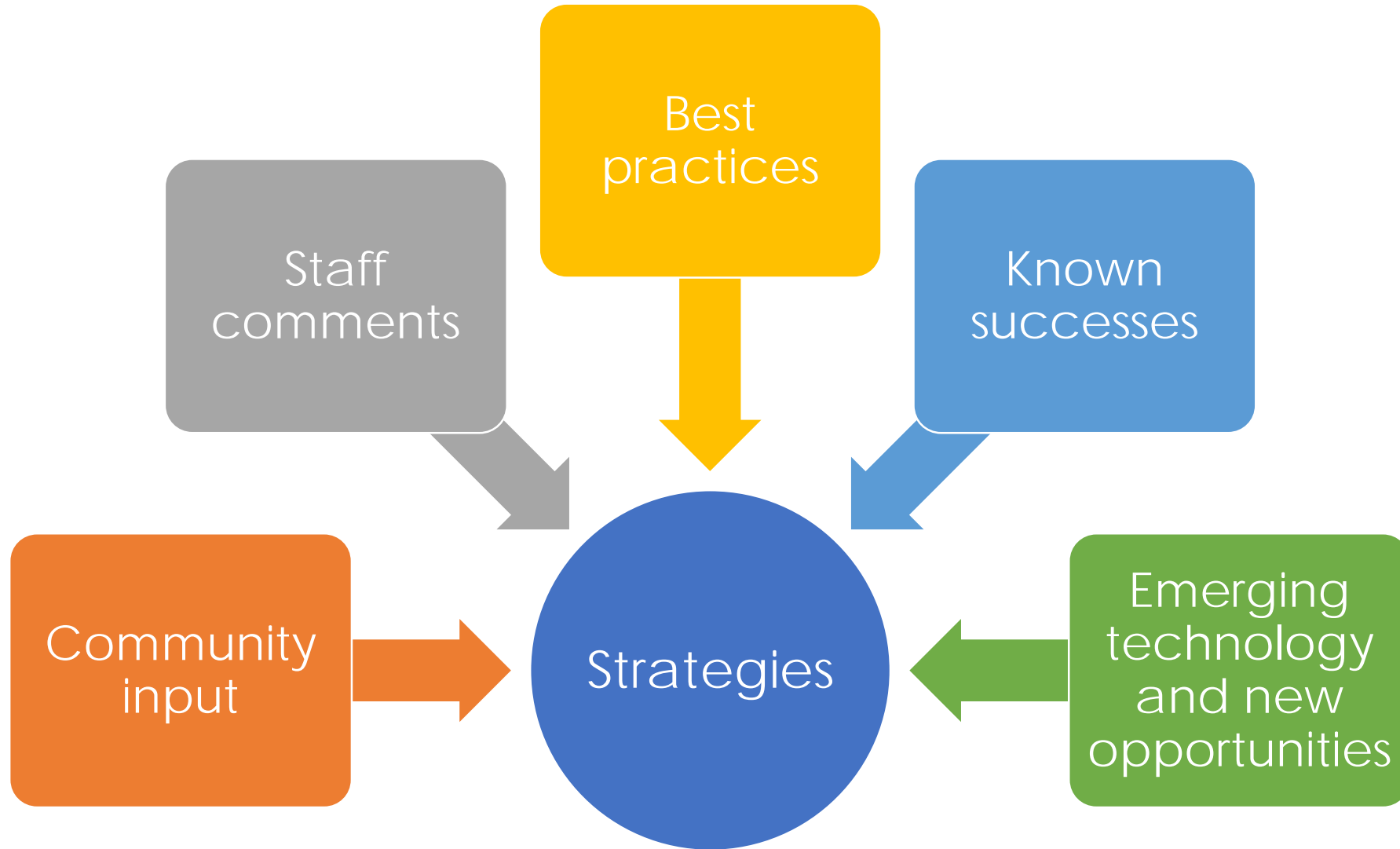


Internal Engagement

- Interdepartmental staff Green Team
 - Bimonthly meetings and equity trainings
 - 1:1 meetings to identify common areas and CAP projects in work scope
 - Intensive review of CAP drafts
 - Provide framework and support, help collect data, and ensure CAP includes key priorities.



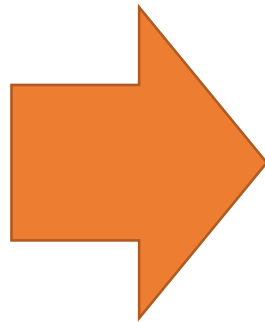
Strategy Development



What are Co-benefits?

Policies which provide positive impacts beyond the intended purpose

Positive impacts should align with community priorities such as



Access to transit

Active mobility

Cost savings

Food security

Green space

Improved road safety

Increased civic engagement

Increased economic viability

Local job creation

Neighborhood resilience

Reduced air pollution

Resource conservation

Walkability

GHG Reduction Strategies



Building electrification



Residential energy efficiency



Commercial energy efficiency



Municipal renewable energy and energy efficiency



Renewable energy



Reducing auto dependency



Active and alternative transportation



Transportation electrification and low-carbon fuels



Waste management



Waste reduction and reuse



Water efficiency



Community consumption



Equity and just transition

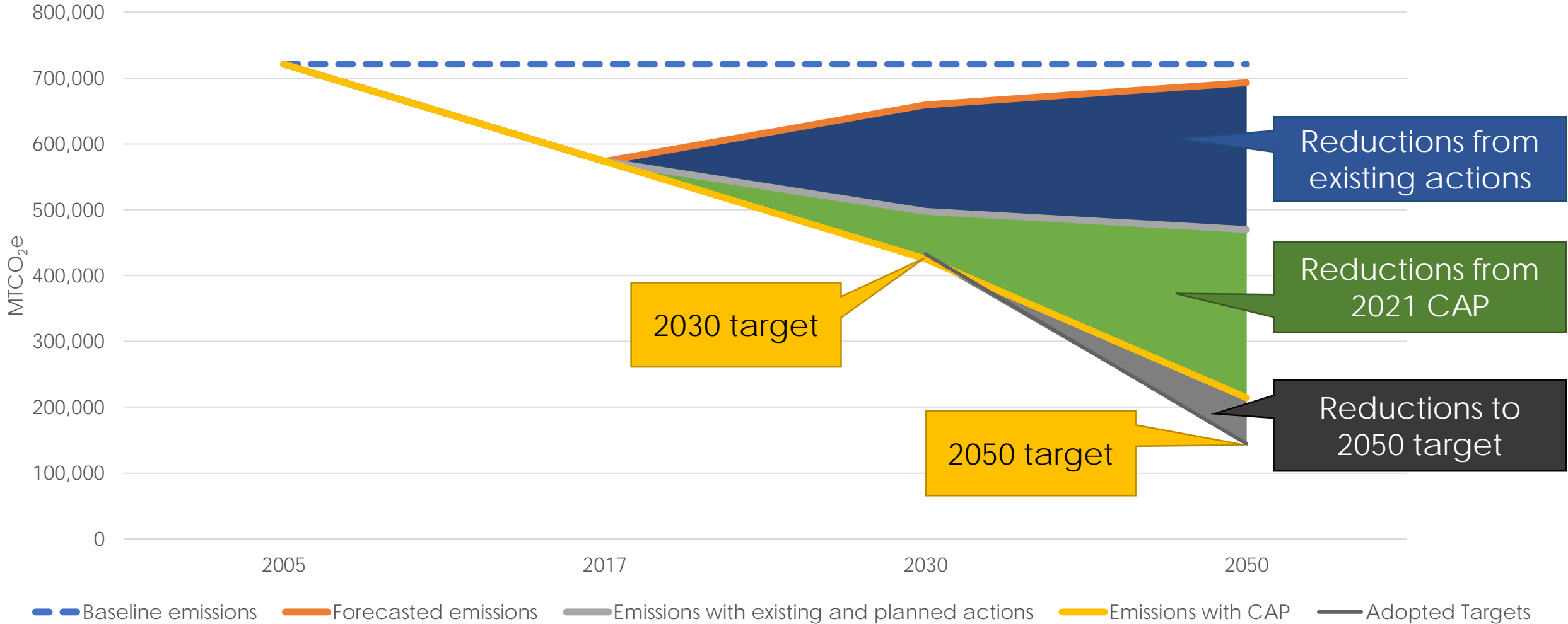
Action Options

- Updating Capital Improvement Project form to include climate/resiliency and equity metrics
- Expanding the resilience hub program to build greater capacity in the community for climate resilience
- Developing reach codes on building electrification and EV charging
- Building out public education and outreach programs around climate, energy, resiliency, and more

GHG Reductions

Reduction Category	2030 (MTCO ₂ e)	2050 (MTCO ₂ e)
Building electrification	11,740	98,740
Residential energy efficiency	13,420	11,840
Commercial energy efficiency	7,060	13,340
Municipal renewable energy and energy efficiency	70	130
Renewable energy	2,010	Supportive
Reducing auto dependency	3,060	5,120
Active and alternative transportation	5,600	13,860
Transportation electrification and low-carbon fuels	15,770	90,380
Waste management	10,650	14,520
Waste reduction and reuse	2,990	7,570
Water efficiency	50	110
Community consumption	Supportive	Supportive
Equity and just transition	Supportive	Supportive
Total	70,860	173,080

Progress to Target



Adaptation Strategies

- Six core strategies
- Respond to key issues in vulnerability assessment
- Action items focus on individual hazards and affected populations and assets.

Community preparation and response

Public health, well-being, and resilience of vulnerable groups

Resilience of new and existing development

Improvements to local and regional infrastructure

Water and energy reliability

Cultural and biological resilience

Environmental Review

Pursuant to CEQA and the CEQA Guidelines, the City of San Leandro completed an Addendum (Exhibit A to the Resolution) to the San Leandro 2035 General Plan Environmental Impact Report (EIR). The Addendum includes an analysis of the proposed project, based on Appendix G of the CEQA Guidelines, and whether the environmental effects from the proposed project would be any different from those disclosed in the Certified EIR.

The Addendum concluded that the proposed project would not result in any new significant impacts or substantially increase the severity of any significant impacts identified in the Certified EIR, except for the significant and unavoidable impacts in the environmental topics of air quality, GHG emissions, and transportation.

Planning Commission Recommendations & Public Comments

Strong recommendation for more mandatory language for actions

- Planning Commission, Bay Area Air Quality Management District, AC Transit, Construction Trades Workforce Initiative, public review survey

New strategy / section recommendations

- 2015 consumption-based inventory details and consumption strategies
- Contractor pre-qualifications for city projects over size threshold
- Carbon sequestration actions

Mandatory language

- Reach codes for building electrification, solar installation, and EV charging
- Develop master tree plan and expand air quality monitoring around the community
- Require employers develop programs for ridesharing/telecommuting to reduce commute trips
- Improve transit speeds thru transit priority signals, dedicated transit lanes, other infrastructure improvements
- Update CAP in 5 years with Resident Advisory Committee

Next steps

- Open Public Hearing for comments
- Adopt the Addendum to the San Leandro 2035 General Plan Environmental Impact Report; and
- Adopt the 2021 Climate Action Plan

