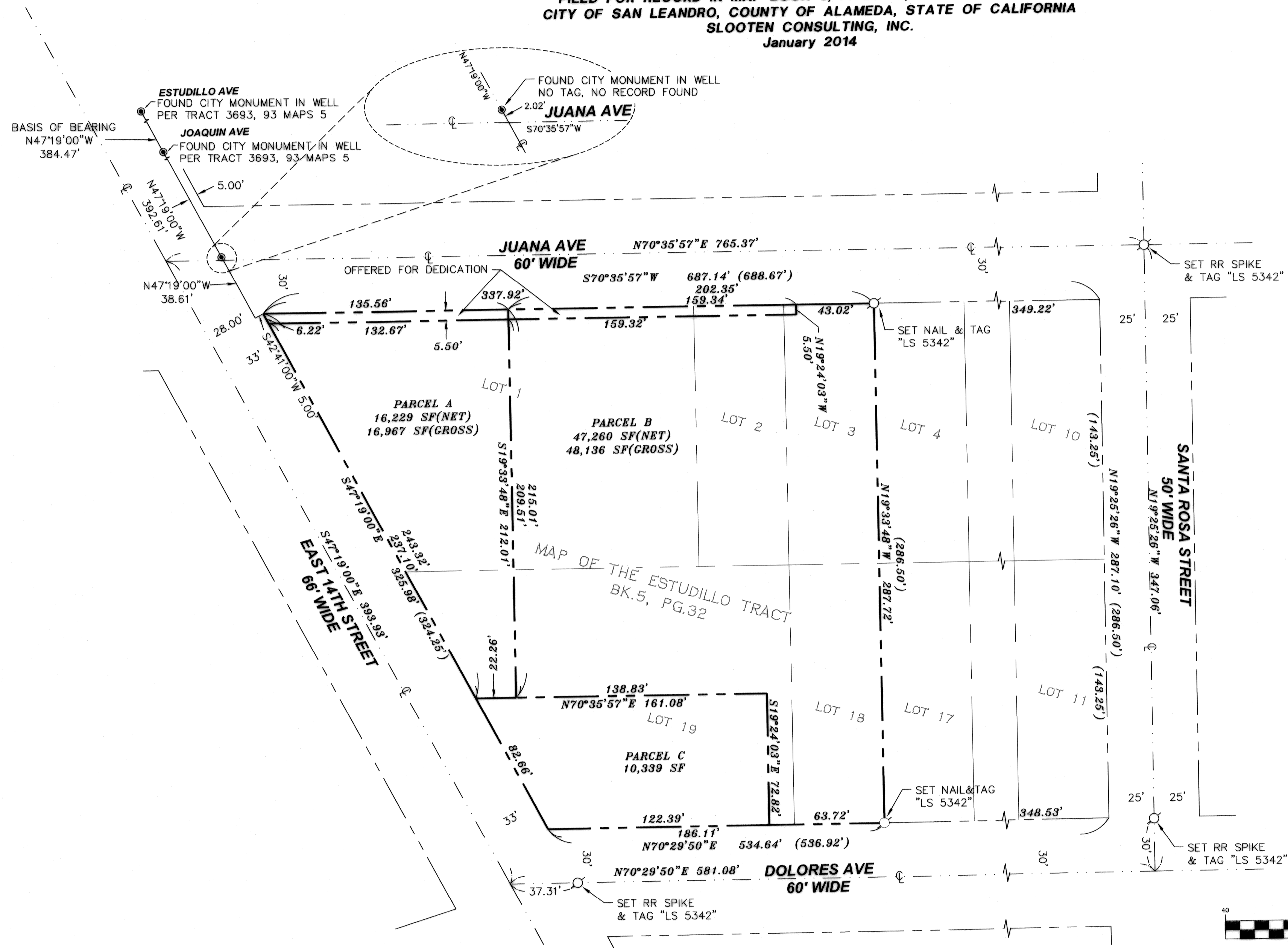


PARCEL MAP 10227

A PORTION OF BLOCK 14 OF THE MAP OF ESTUDILLO TRACT
 FILED FOR RECORD IN MAP BOOK 5, PAGE 32, OFFICIAL RECORDS
 CITY OF SAN LEANDRO, COUNTY OF ALAMEDA, STATE OF CALIFORNIA
 SLOOTEN CONSULTING, INC.
 January 2014



LEGEND

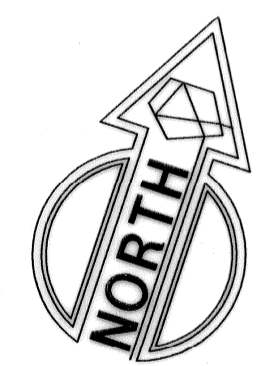
- — — — — PROPERTY LINE
- - - - - RIGHT OF WAY CENTER LINE
- () RECORD INFORMATION PER 5 MB 32
- SET MONUMENT AS NOTED

BASIS OF BEARINGS

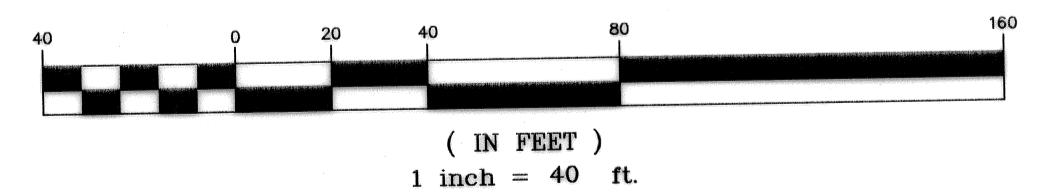
THE CENTERLINE OF EAST 14TH STREET AS SHOWN ON THAT CERTAIN MAP FILED FOR RECORD IN BOOK 8 OF RECORD OF SURVEYS, PAGE 47, RECORDS OF ALAMEDA COUNTY WAS USED AS THE BASIS OF BEARINGS.

SURVEY NOTES

THE BOUNDARY FOR THIS SURVEY WAS DETERMINED BY SURVEYING THE BLOCK BOUNDED BY E 14TH ST., DOLORES AVE., SANTA ROSA ST., AND JUANA AVE. AND SPLITTING THE IMPROVEMENTS TO DETERMINE CENTERLINES OF EACH OF THE STREETS. THE RIGHT OF WAY FOR E 14TH STREET WAS HELD BASED THE SOUTH EASTERLY PROLONGATION OF FOUND MONUMENTS AT THE INTERSECTIONS OF E 14TH ST WITH JUANA AVENUE, AND ESTUDILLO.



GRAPHIC SCALE



SLOOTEN CONSULTING INC.
 SURVEYING & ENGINEERING
 4740 NORTHGATE BLVD., SUITE 115 (916)641-7570
 SACRAMENTO, CA 95834 (FAX)641-7572
 JOB# 6168-04