



BAY FAIR

COMMUNITY BASED TRANSPORTATION PLAN

**San Leandro City Council
Facilities & Transportation Committee**

July 10, 2025



CBTP Project Overview

A transportation planning process that focuses on addressing mobility needs of underserved areas through direct community engagement

ACTC Grant-funded (\$350k)

CBTP Key Features

- **Community Engagement:** Residents, businesses, and stakeholders actively participate in identifying transportation challenges and solutions
- **Equity Focus:** Prioritizes the needs of low-income and disadvantaged communities
- **Multimodal Approach:** Considers various transportation modes, including public transit, walking, biking, and carpooling
- **Project Identification:** Develops a list of recommended transportation improvements based on community input
- **Funding and Implementation:** Helps secure funding and guide agencies in making targeted investments



CBTP Project Elements & Key Outcomes

Determine Existing Conditions & Barriers

- Mobility plans and CIP
- Demographic analysis
- Community assets inventory
- Engage Community

Identify Mobility Needs

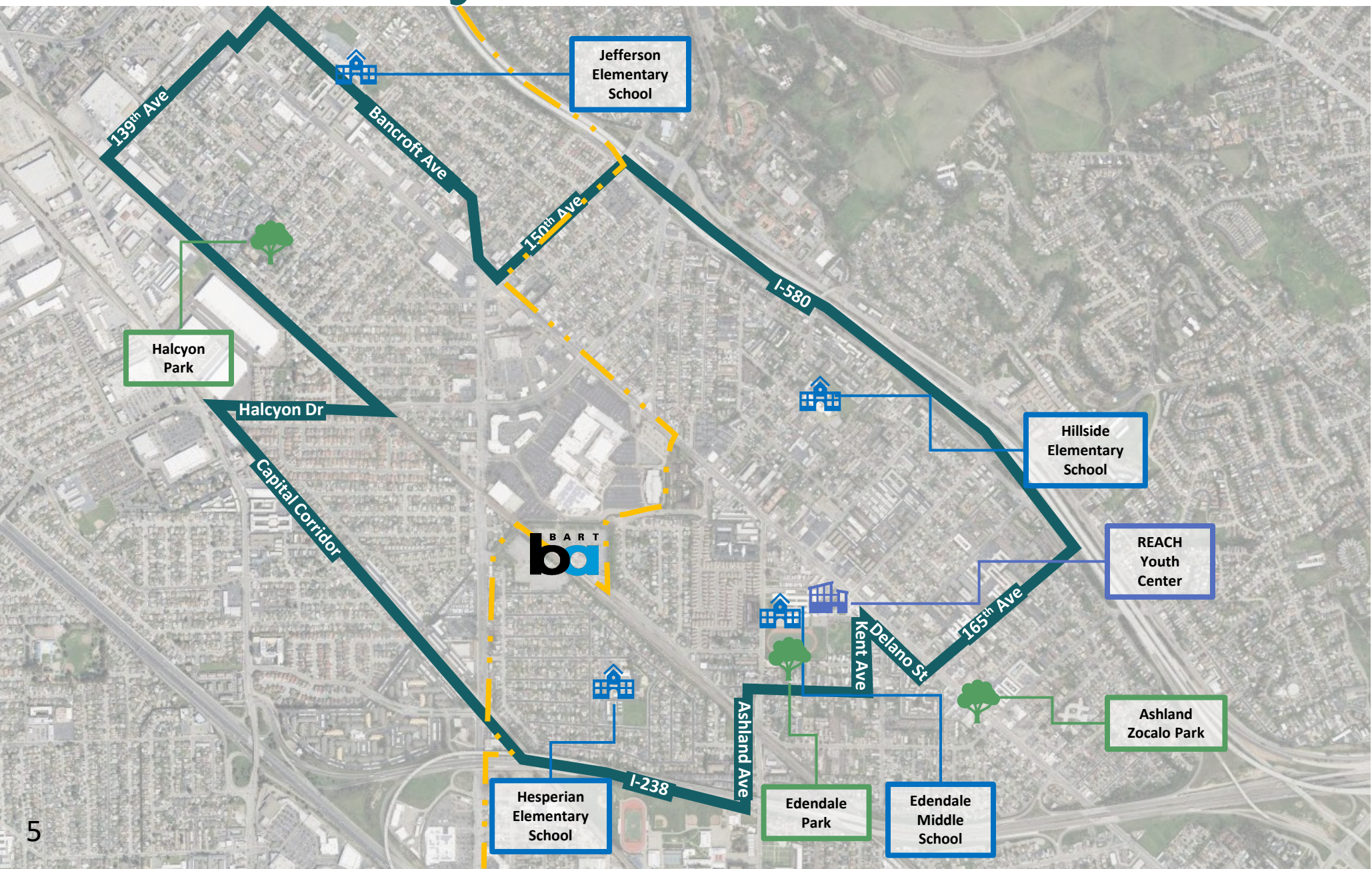
- List of community-prioritized transportation gaps & barriers

Prioritize Projects

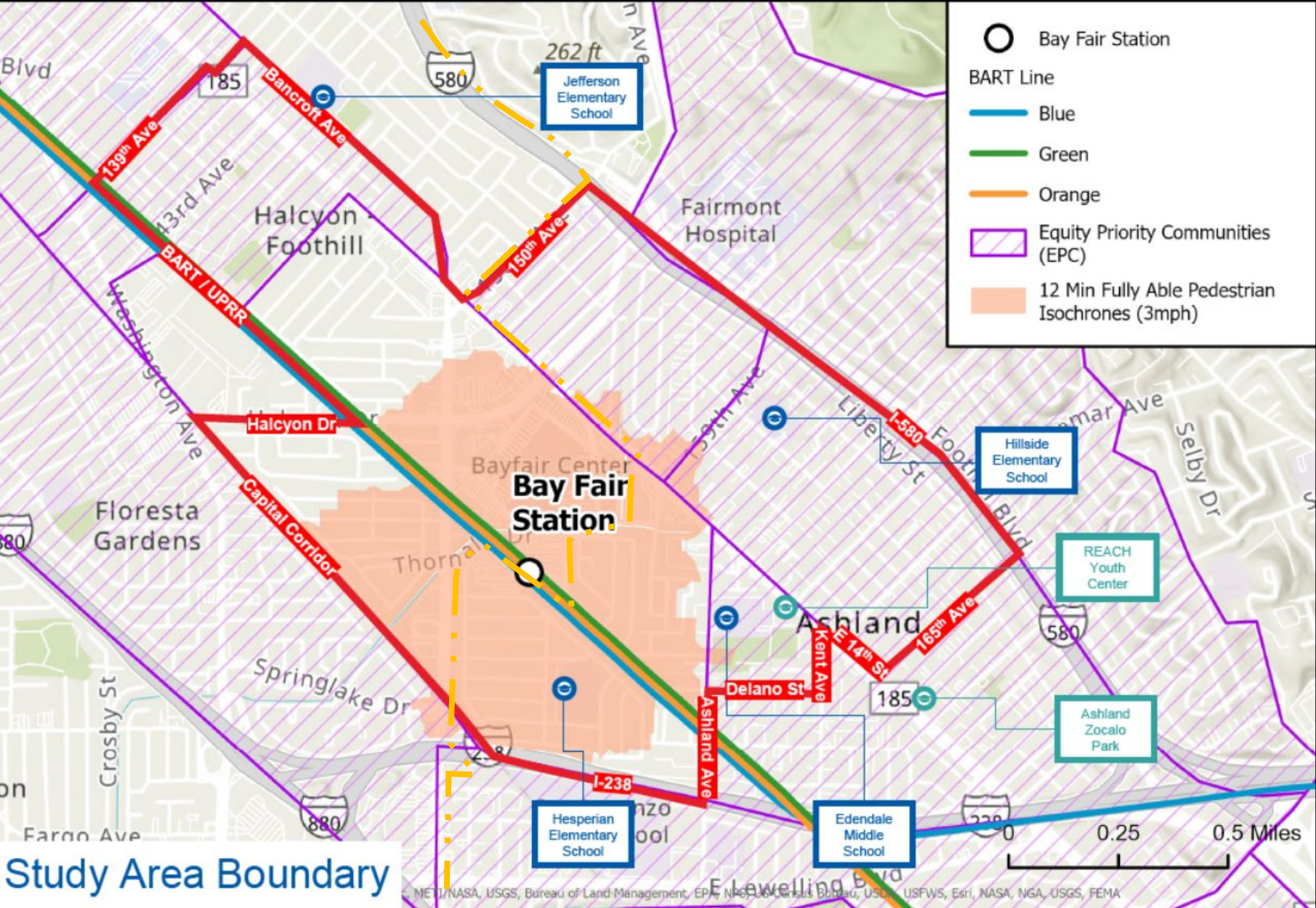
- Solutions to address gaps
- Identification of funding sources
- List of stakeholders to implement
- Two lists adopted – County & City

Focused on Public Rights-of-Way, not private or BART-owned property

CBTP Study Area



CBTP Study Area Context



CBTP: Key Outcomes

- Prioritized transportation projects & cost estimates
- Separate project lists to be adopted by City and County

Focused on improvements within public rights -of-way; will not include recommendations on BART property or private properties



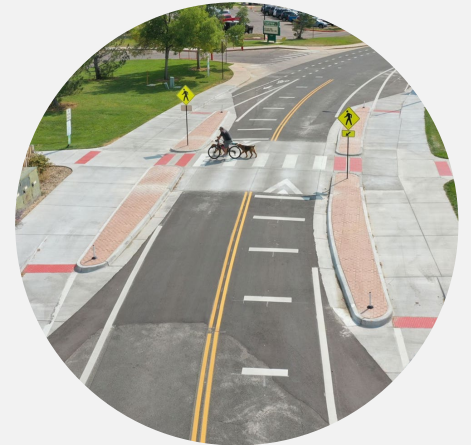
Pedestrian & Bicycle Infrastructure Improvements



Bus Stop Amenities & ADA Upgrades



Intersection Improvements

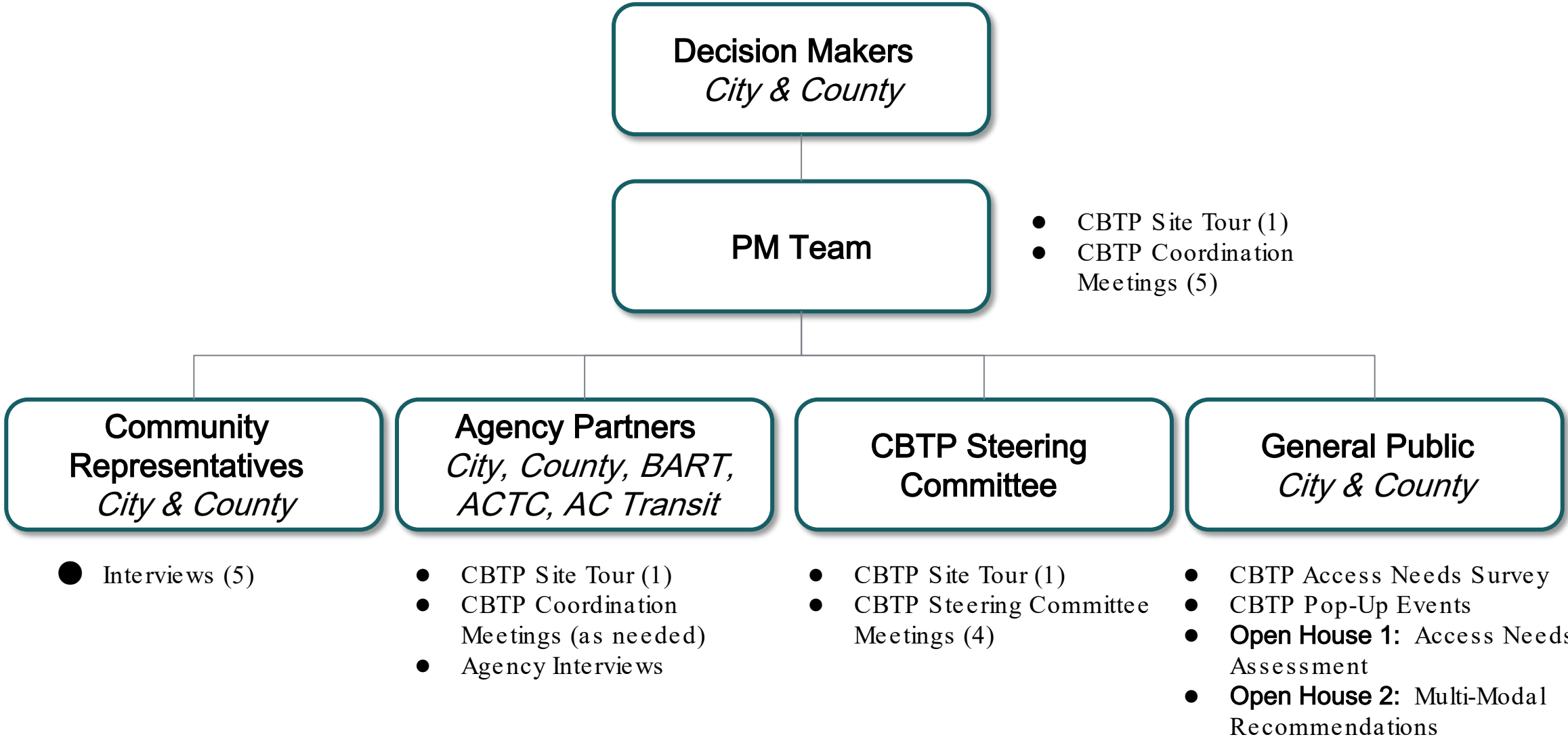


Neighborhood Traffic Calming & School Safety



CBTP Stakeholder Engagement

CBTP Stakeholders



Purpose & Role of Steering Committee

Provide local insights
on transportation
needs, access
barriers & challenges

Help refine outreach
strategies to reach
priority populations

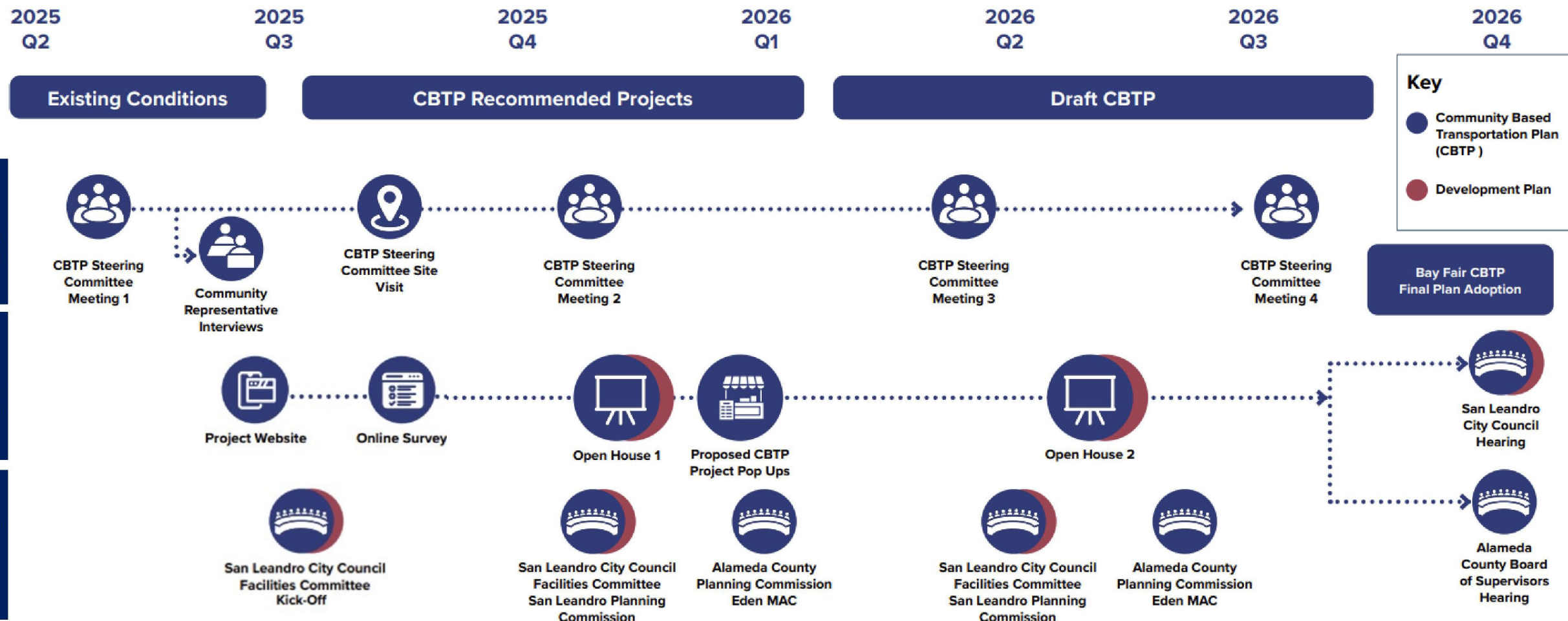
Ensure equitable
representation of a
variety of
stakeholders

Serve as a liaison
between the project
team & the broader
community



CBTP Timeline & Next Steps

BAY FAIR TOD COMMUNITY BASED TRANSPORTATION PLAN (CBTP) TIMELINE



BayFairCBTP.Org Website Live



BAY FAIR
COMMUNITY-BASED
TRANSPORTATION PLAN

[Home](#) [Learn More](#) ▼
[Sign up for Updates](#)

Take the Survey

We want to hear from you on how to improve transportation in the Bay Fair Area!

Alameda County and the City of San Leandro are working together to create a Community-Based Transportation Plan (CBTP) for the Bay Fair area.

The CBTP is a collaborative transportation access planning effort between Alameda County and the City of San Leandro to make it easier, safer and more convenient to move to and from the Bay Fair BART Station, schools and other destinations throughout the Bay Fair Study Area (see below). The CBTP will engage local residents, businesses, and community groups to identify transportation challenges and potential projects within the public right-of-way that will improve how people get around the Bay Fair Study Area. Together, we can plan for a safer, more accessible Bay Fair for everyone.

Learn more about the CBTP

Get Involved

Survey Now Open!



BAY FAIR
COMMUNITY BASED
TRANSPORTATION PLAN

Be Heard! Drive Change!



www.surveymonkey.com/r/bayfaircbtp

