

# EV Charging at San Leandro Senior Community Center



# Who We Are

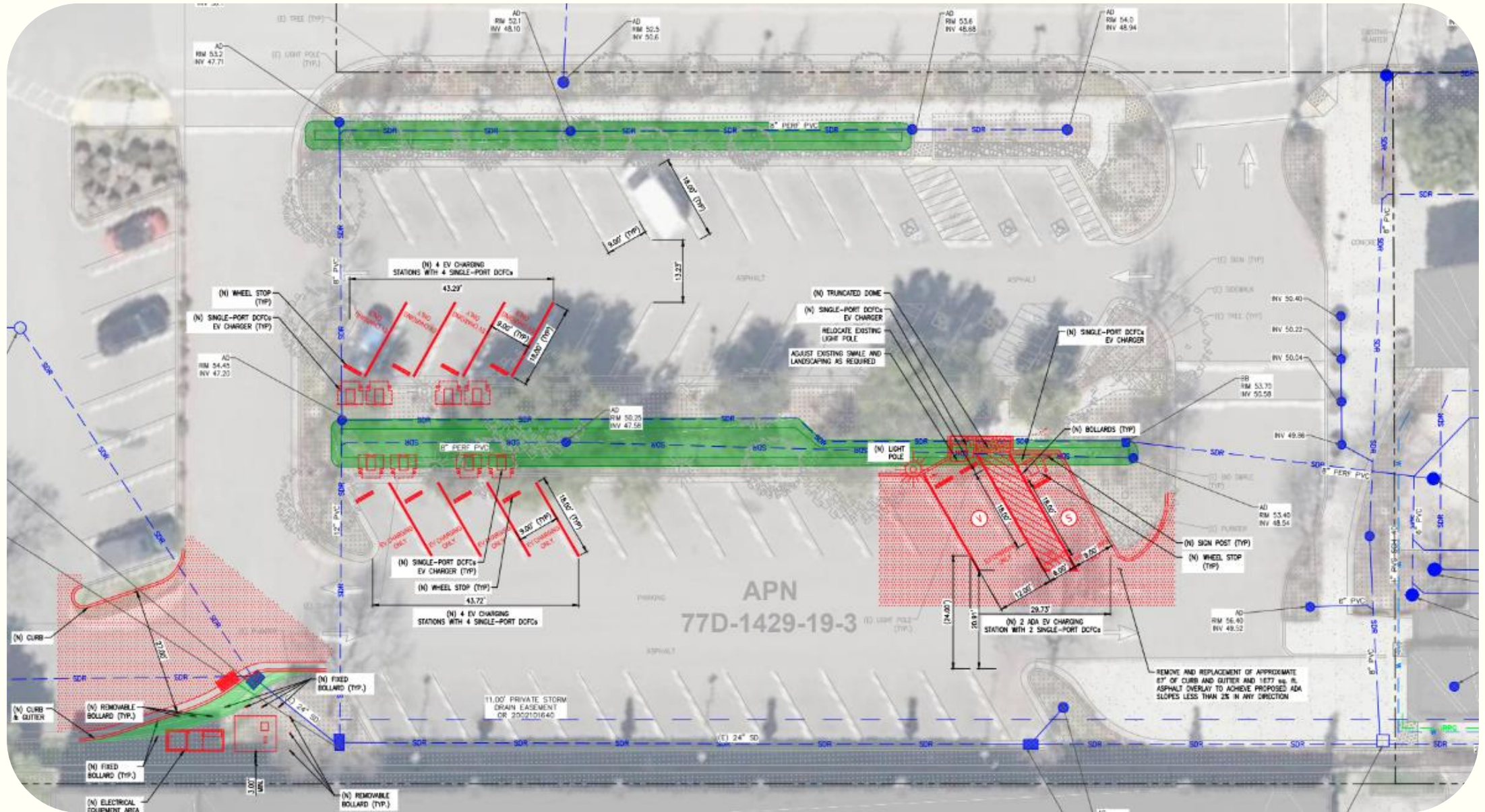
- Default electricity supplier in Alameda County (and beyond)
  - Responsible for electricity generation
- Public agency formed by the Cities (including San Leandro) and County
  - Governed by Board of Directors consisting of elected officials
- Mission: provide more renewable energy at more competitive rates
  - 100% renewable energy by 2030
  - Reinvest earnings into local programs



# EV Charging Project

- Ava and City collaborated on site selection
- Ava working with site owner (AHS) on Agreement
- Site chosen due to its close proximity to multi-family housing
- Initial draft project design: 20 EV charging spaces
- City conducted outreach and collected feedback
- Revised draft project design: 10 EV charging spaces
  - Includes 2 ADA-compliant charging spaces
  - Relocated charging spaces away from the Senior Center entrance (aside from ADA charging spaces)
- Impact on parking lot:
  - Reduction from 57 non-EV charging spaces to 46
  - Charging spaces would be reserved for EVs only, 24/7
- Considering adding more non-EV charging ADA-compliant spaces





# Thank you!

Zac Thompson

zthompson@avaenergy.org



Online

[AvaEnergy.org](https://AvaEnergy.org)

Phone

+1 833.699.3223

Email

[customer-support@AvaEnergy.org](mailto:customer-support@AvaEnergy.org)

Social

[PoweredWithAva](#)