



# City of San Leandro City Council Meeting

Amendment 14 to Franchise Agreement  
Alameda County Industries  
May 16, 2022

---

## Proposed Amendment 14

- Approve rate increase of 5.69%
- Modify the definition of Multi-family
- Clarify point of pickup locations for multi-family residences
- Change rate notification period to 30-days



## Amendments to Franchise

Year	Amendment	Purpose
2010	10	Established the Refuse Rate Index (RRI) to adjust rates annually
2015 (February)	11	Adjusted rates by 4.01% for MRF labor issue
2015 (August)	12	Adjusted rates by 8.49% for special rate review (includes annual rate adjustment)
2019	13	Adjusted rates by 7.89% for special rate review (includes annual rate adjustment)
2022	14 (Proposed)	Adjusted rates by 5.69% for special rate review (includes annual rate adjustment)

**Contract expires February 1, 2025**

### Components of 5.69% Rate Increase

- 5.84% Refuse Rate Index (Annual Rate Adjustment)
- -1.46% recycling revenue share 2022
- .35% recycling revenue share (2021 reversed)
- .16% Material Recover Facility Labor
- .80% SB 1383 implementation (Special Rate Review)

## Annual Rate Adjustment Process

- Amendment 10 specifies use of Refuse Rate Index (RRI) for determining Annual Rate Adjustment
- Includes provision to share revenues on the sale of recyclables

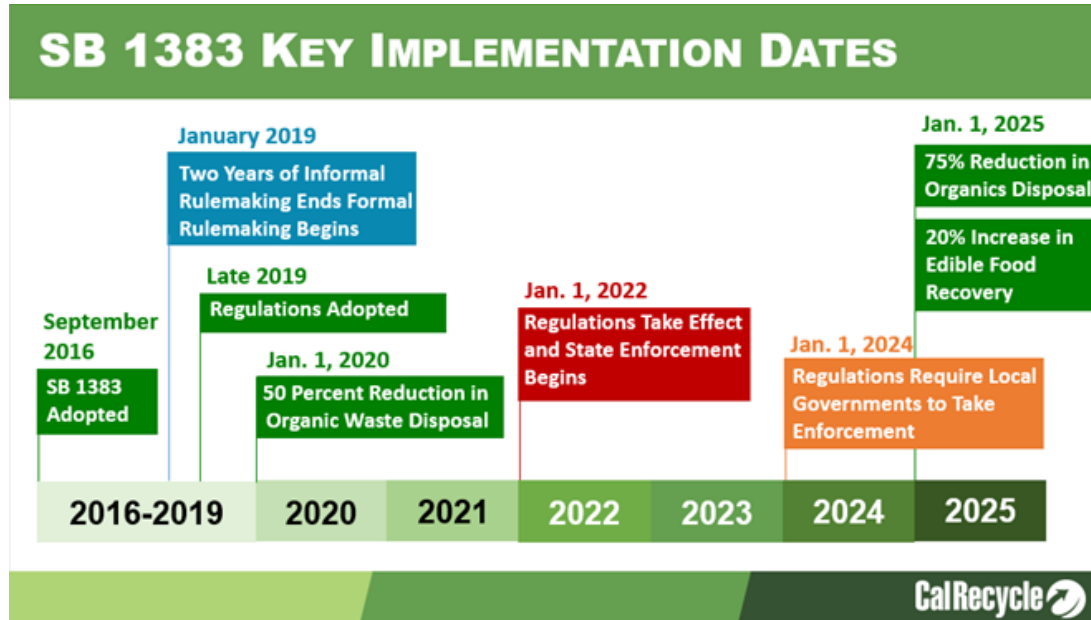
Cost Category	Index
Labor	Changes in actual labor costs
Diesel Fuel	#2 Diesel - Series ID WPU057303
Vehicle Replacement	Truck & Bodies – Series ID WPU141301
Vehicle Maintenance	Parts & Attachments – Series ID WPU1140378
Disposal	Changes in actual disposal costs at landfill
All Other	All items – Series ID CURR0000SA0

- Amendments 11 & 12
- Material Recover Facility Labor Dispute of 2015
- City loaned ACI \$1.1m to settle dispute (Amendment 11)
- Authorized 4.1% increase 2/1/2015
- Authorized an 8.49% increase effective 8/1/2015 (Amendment 12)
- Provides for annual increases for MRF workers not include in RRI



## SB 1383 Implementation

.80% increase requested



Focus on compliance in 2022-2023

- One-time outreach design costs
- Data transfer to Recyclist
- .25 FTE for Reporting
- .5 FTE Sustainability Specialist
- Contamination Notification (Cart Tags)
- Annual outreach – door hanger

## Monthly Solid Waste Rates

	Residential 20-gallon	Residential 32-gallon	Multifamily 1cy 1x week	Commercial 1cy 1x week	Commercial 3cy 1x week
Current Rates July 1, 2021-2022	\$27.29	\$34.00	\$126.69	\$149.07	\$450.70
Proposed Rates July 1, 2022-2023	\$28.84	\$35.93	\$133.90	\$157.55	\$476.34
Increase (5.69%)	\$1.55	\$1.93	\$7.21	\$8.48	\$25.64

\*Residential Customers billed quarterly



# Rate Comparison

## Monthly Solid Waste Rates

Jurisdiction	Residential 20-gallon	Residential 32-gallon	Residential 64-gallon	Residential 96-gallon	Commercial 1cy 1x per week	Commercial 3cy 1x per week
San Leandro - Current	\$27.29	\$34.00	\$56.59	\$79.16	\$149.07	\$450.70
San Leandro - 5.69%	<b>\$28.84</b>	<b>\$35.93</b>	<b>\$59.81</b>	<b>\$83.64</b>	<b>\$157.55</b>	<b>\$476.34</b>
Alameda	\$35.99	\$45.53	\$74.64	\$104.25	\$173.05	\$519.16
Berkeley	\$27.30	\$43.66	\$87.28	\$130.87	\$173.77	\$480.92
Dublin	N/A	\$38.39	\$70.52	\$102.65	\$186.27	\$558.81
Fremont	\$38.94	\$39.72	\$43.33	\$62.64	\$109.70	\$315.32
Hayward	\$25.06	\$36.63	\$65.32	\$93.98	\$155.80	\$401.38
Livermore	\$29.94	\$39.63	\$59.36	\$93.26	\$119.07	\$357.20
Newark	\$31.21	\$34.68	\$61.43	\$88.16	\$140.54	\$371.83
Oakland	\$46.13	\$52.36	\$92.29	\$138.62	\$255.26	\$607.89
Pleasanton	N/A	\$27.58	N/A	\$48.12	\$123.49	\$370.45
Union City	\$46.37	\$54.37	\$94.38	\$134.32	\$165.98	\$434.94
Castro Valley SD	\$32.42	\$50.26	\$87.29	\$124.30	\$265.60	\$706.13
Oro Loma SD	\$17.51	\$29.49	\$53.28	\$77.15	\$163.02	415.09

# Conclusion



Approve Amendment 14  
5.69% Rate Increase Effective July 1, 2022