

MacArthur Blvd / Superior Ave Roundabout Design Project

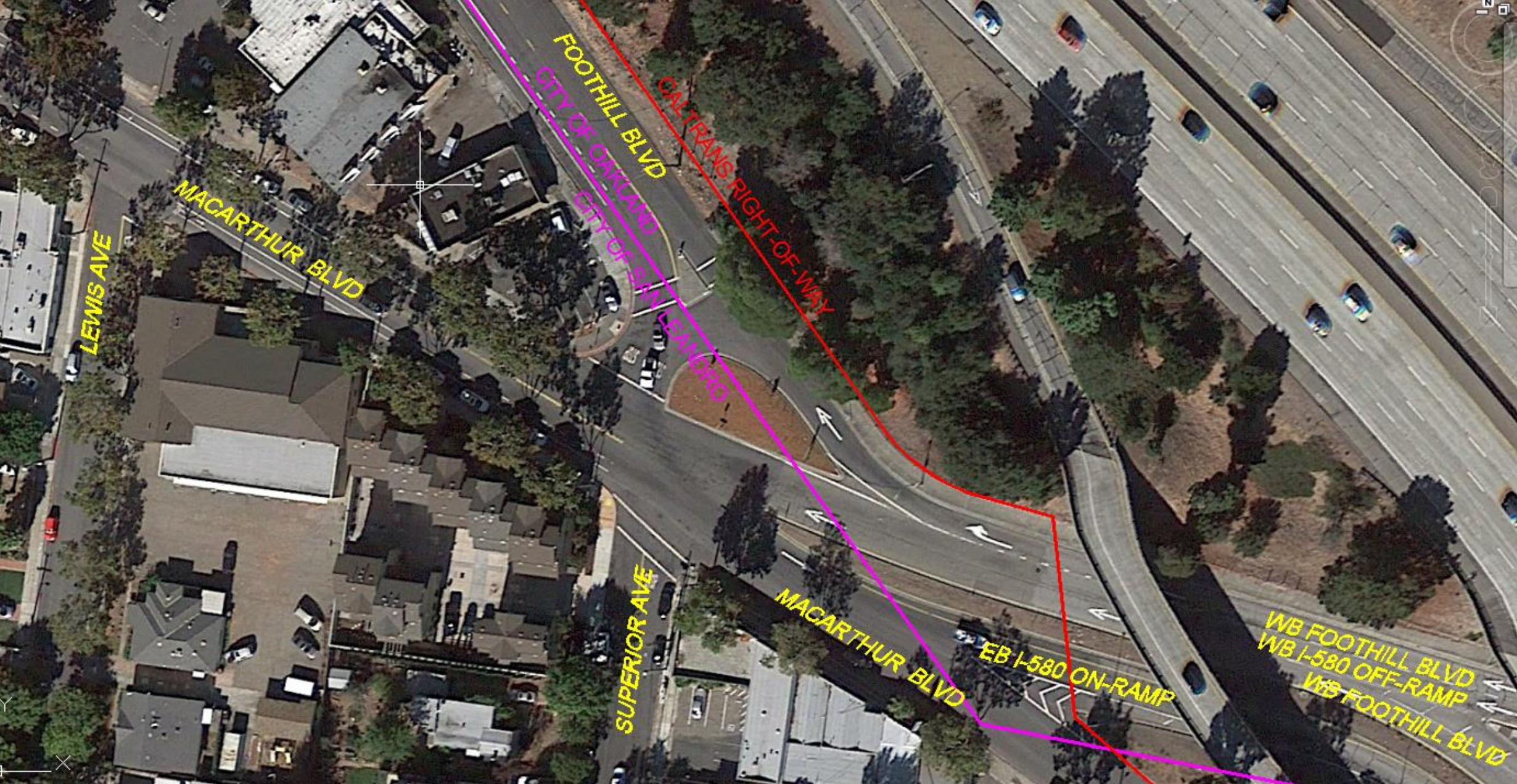
Conceptual Plan Update

Facilities and Transportation Committee Meeting

Wednesday, April 5th, 2017

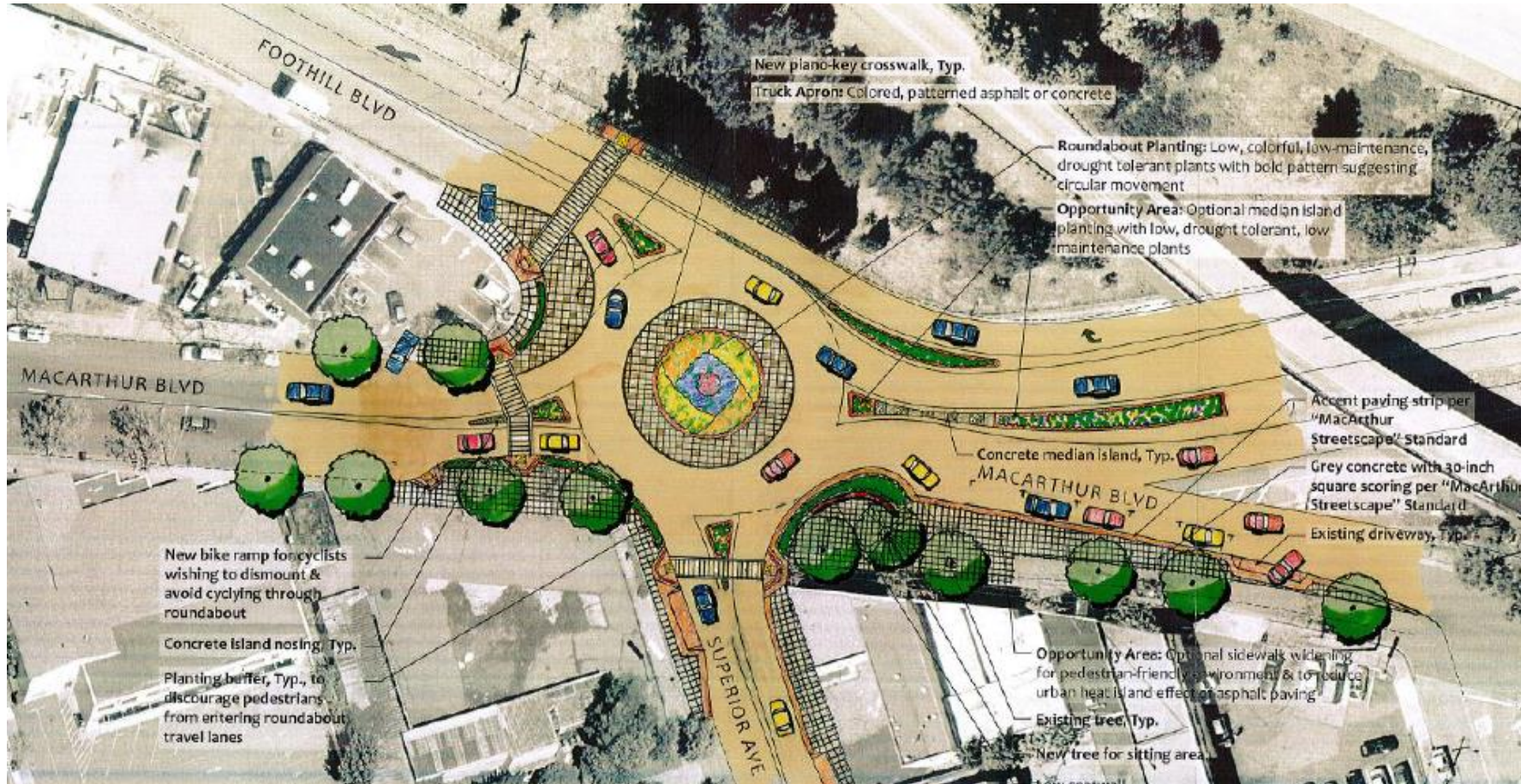


Project Background



Project Background

- Long wait times
- Speeding / reckless driving
- High accident rate
- A roundabout was recommended per traffic studies done in 2006 & 2015
- Previous concept shown below



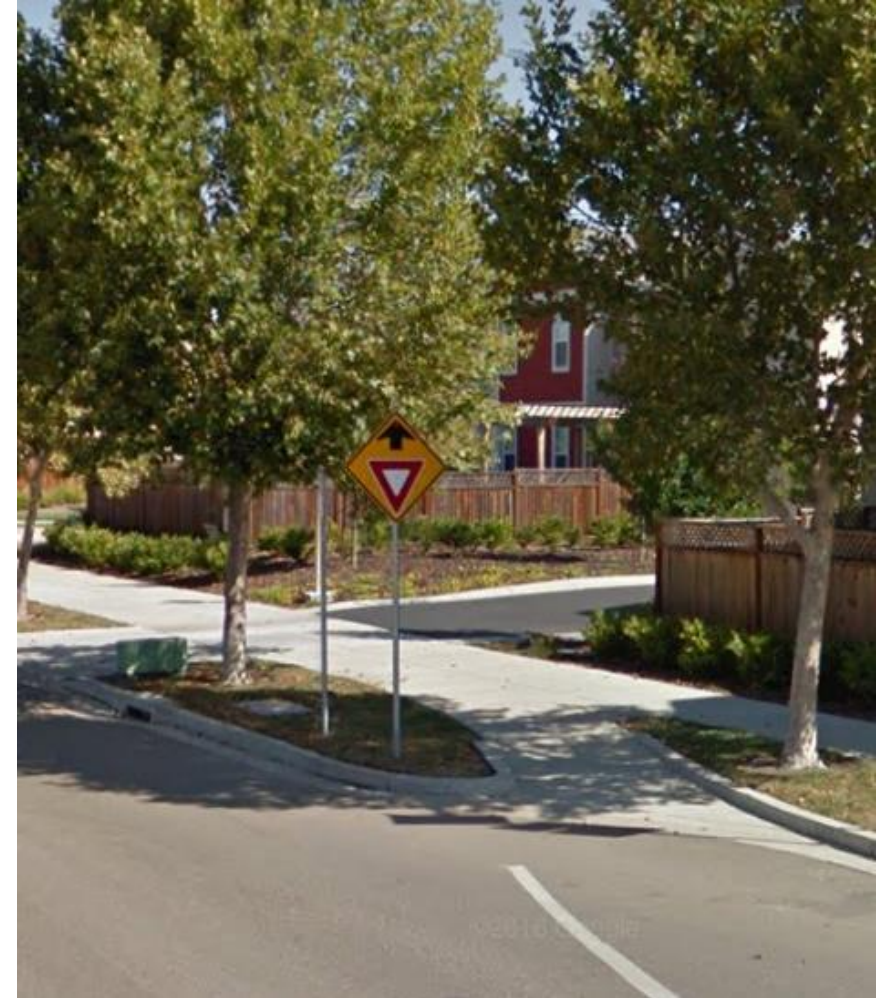
Conceptual Design

New features include:

- Fourth crosswalk east of roundabout with pedestrian refuge areas
- Additional bike ramps
- Accommodations for larger design vehicle movements

Additional Traffic Calming Measures on Superior Ave:

- Speed humps or speed feedback signs to be considered



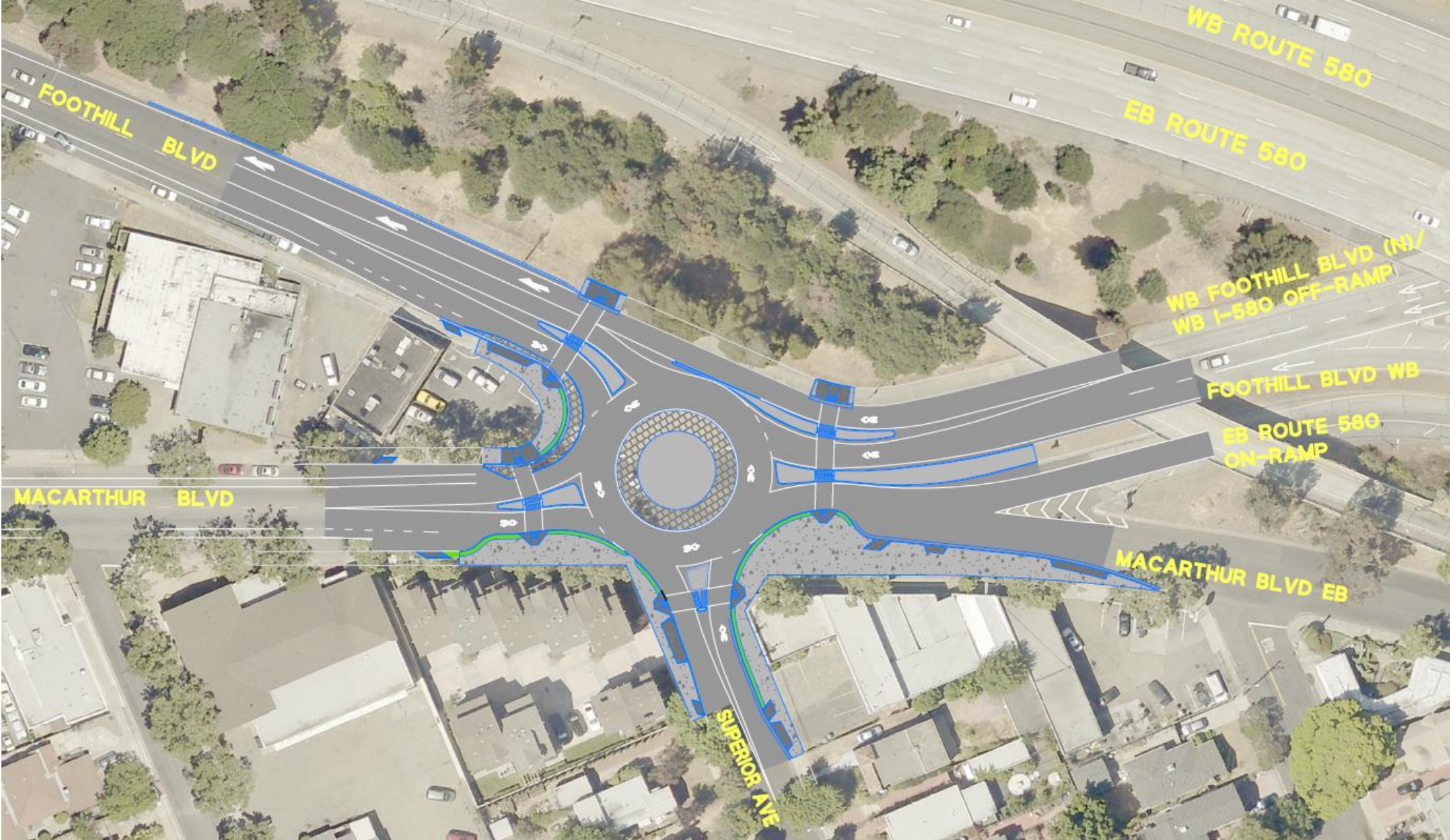
Conceptual Design

New features did not include:

- Separated bike lanes (lack of available right-of-way)
- Elimination of slip lane from westbound Foothill Blvd (would negatively impact functionality of roundabout)

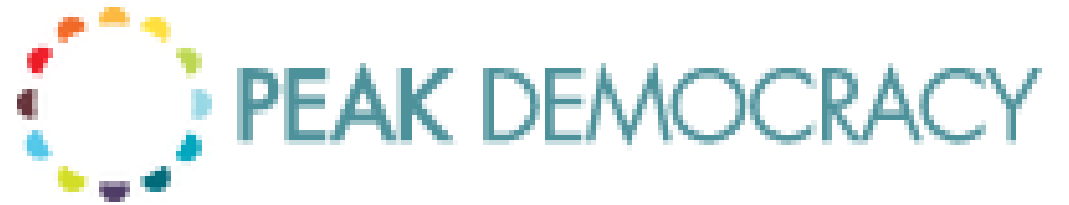


Conceptual Design



Next steps

- Present revised roundabout design at a second public meeting (approximately one month from today)
- Also seek input on through an online “open town hall” using the Peak Democracy website



Next steps

- Send conceptual plan to Bike East Bay for their review and comments
- Mail questionnaire to residents on Mitchell Ave and Lewis Ave about their preference for traffic calming measures



Bicycle & Pedestrian Master Plan 2017



Project Timeline

Fall 2017 – Finalize plans, advertise project for bidding

Winter 2017/18 – Award project for construction

Summer 2018 – Finish construction



Questions?