

San Leandro Bicycle and Pedestrian Master Plan Update

Bicycle and Pedestrian Advisory Committee

January 23, 2024



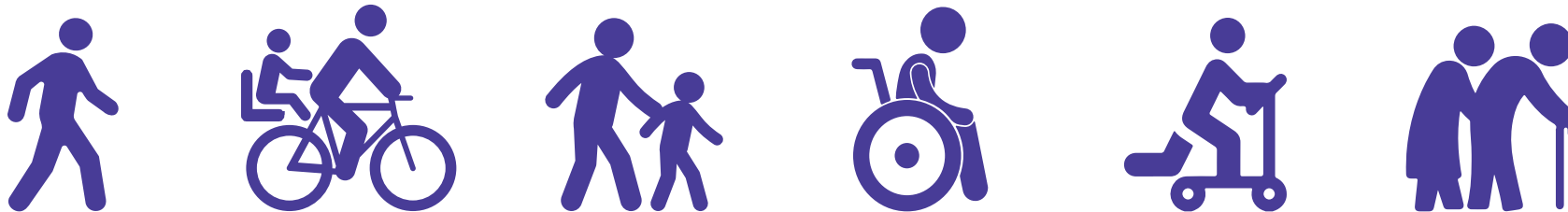
Today's Agenda

- 1 Introduction
- 2 Community Engagement Plan
- 3 Draft Vision and Goals
- 4 Existing Conditions
- 5 Next Steps and Discussion



What is the Bicycle and Pedestrian Master Plan Update?

The Bicycle and Pedestrian Master Plan is a *focused update* to the 2018 Plan that creates a 5-year work plan of projects and programs to support bicycling and walking in San Leandro.



What is a “focused update?”



The focused update reviews and updates the 2018 network with new prioritization and implementation strategies.



The community outreach and technical tasks are designed to build off existing work and finalize the update on a shorter schedule.





ASSUMPTION SCHOOL



Share your thoughts on walking and biking in San Leandro!

This plan will guide development of projects and programs to support bicycling and walking as a safe, enjoyable, and practical transportation for San Leandro.

Community Engagement Plan



Show your feedback! Visit the Bicycle and Pedestrian Plan webpage to learn more about the project and how to get involved.



Community input will align with technical tasks over three phases.



Phase 1: Winter 2023/24

Where We Are: Tell us about your experiences walking and biking today



Phase 2: Spring 2024

Where we're going: Give your feedback on the draft bicycle and pedestrian network updates

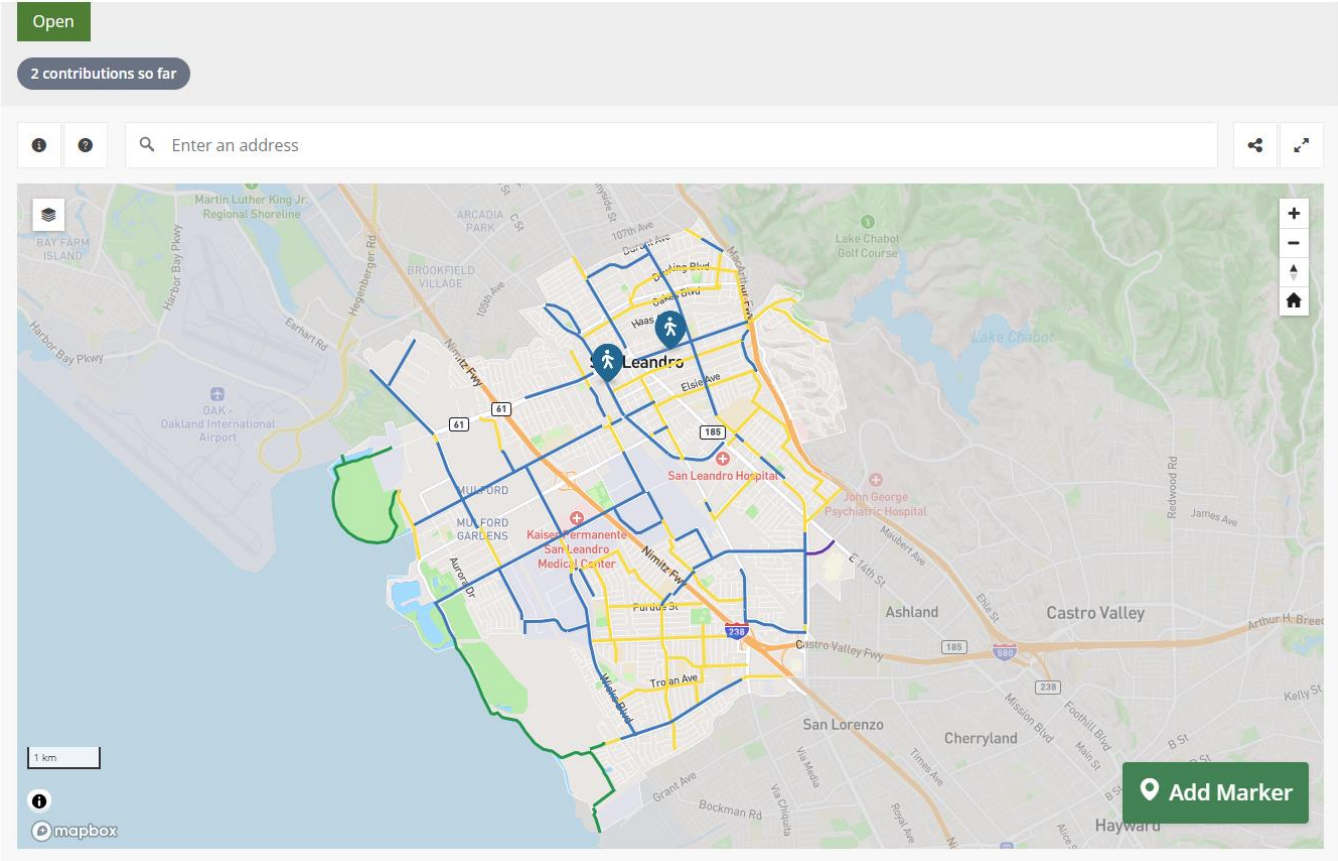


Phase 3: Fall 2024

How we'll get there: Review and share feedback on the City's proposed priority projects and implementation plan



The web map will be live for comments through February 2024.



bit.ly/san-leandro-bpmp-2023



We kicked off conversations with San Leandrans at the Tree Lighting event.



53

Map Comments



96

People Engaged In Person





Draft Vision and Goals



The Plan's vision and goals will align with key priorities in the City's adopted plans.



Safety



Accessibility



Sense of
Community



Healthy Public
Spaces



Community Energy and
Resilience

Themes from:

- San Leandro 2035 General Plan
- Local Roadway Safety Plan
- 2018 Bicycle and Pedestrian Master Plan



Draft Vision Statement

“

San Leandro will be a connected community where walking and biking are fully integrated into daily life as safe, affordable, and enjoyable transportation options for people of all ages and abilities.

”



Draft Goals

Safety and Comfort

Consistent with Vision Zero, achieve a goal of zero bicycle and pedestrian fatalities and serious injuries.

A Comprehensive and Connected System

Develop a cohesive, legible, and complete bicycle and pedestrian network that connects San Leandro neighborhoods, schools, parks, and businesses and is comfortable for people of all ages and abilities.

Community Support Programs

Continue developing a coordinated outreach strategy that leverages existing City, partner organization, and community resources and energy to amplify awareness of the benefits of walking and biking

Funding and Implementation

Develop, prioritize, and implement improvements that make the best use of a variety of funding opportunities to advance equity, safety, and access.





Existing Conditions



San Leandro has a variety of Bikeway types.

Separated Bike Lane



Bike Lane



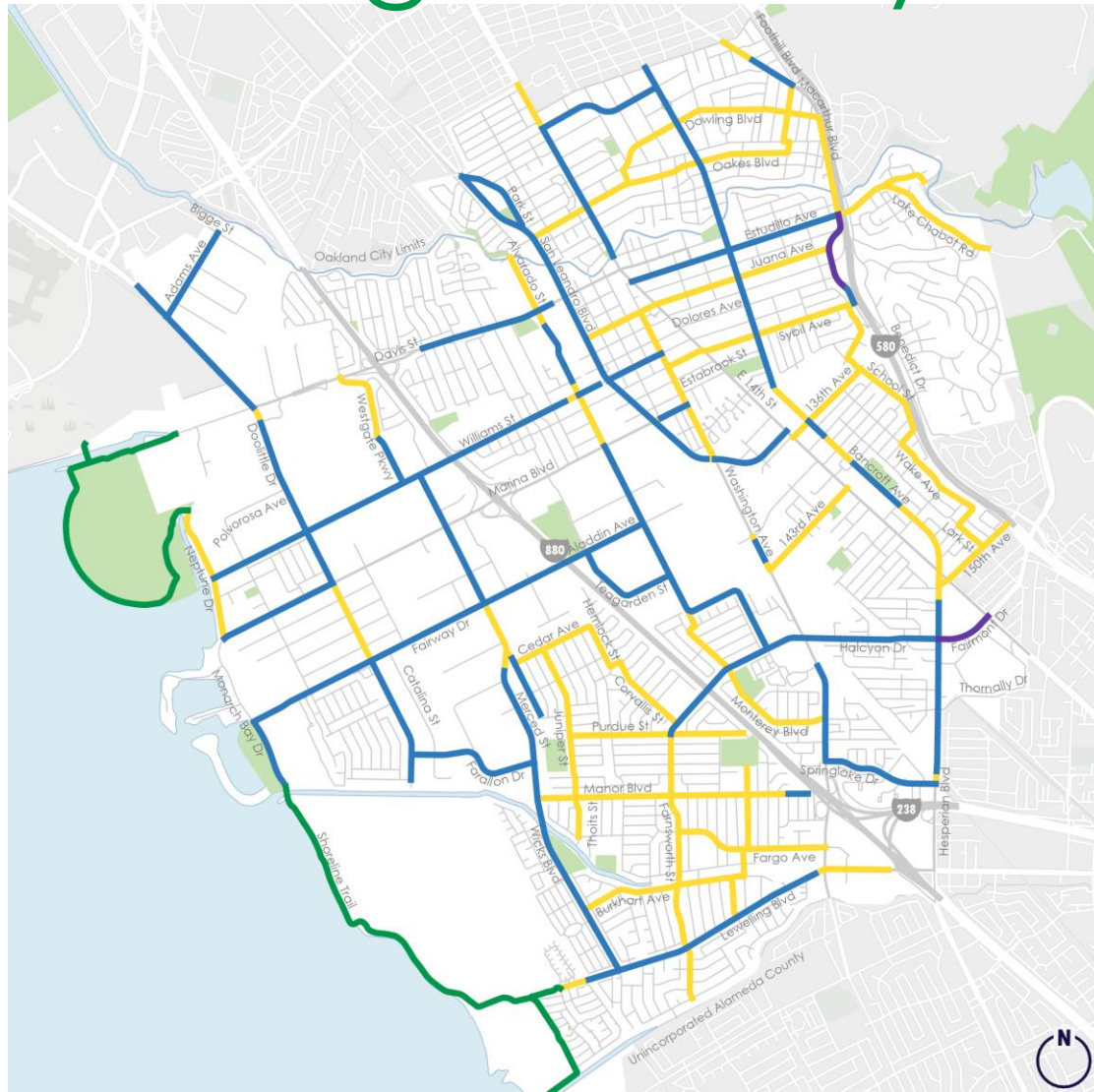
Bike Route



Shared Use Path



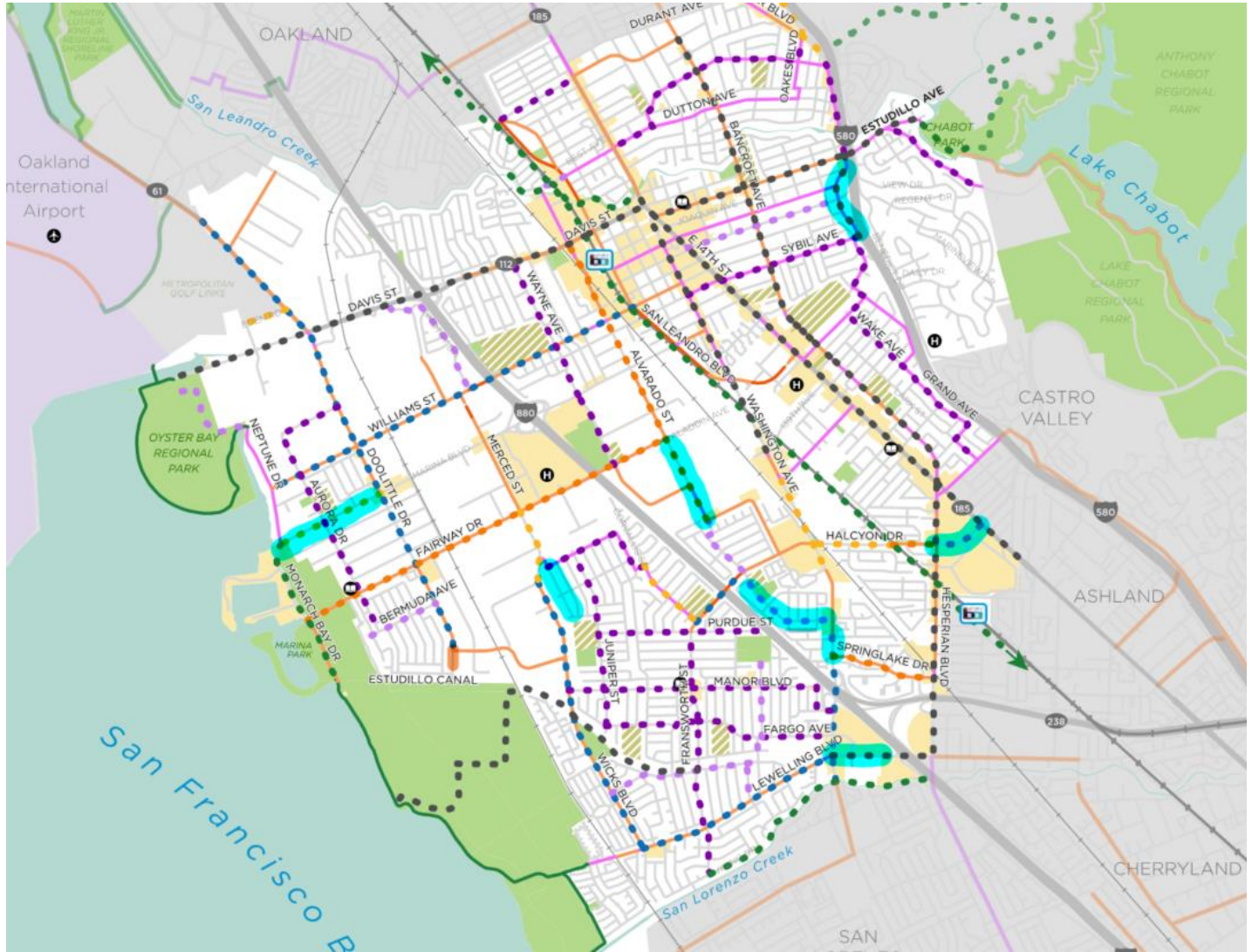
The update starts with a review of the existing bikeway network.



- Shared Use Path
- Separated Bike Lane
- Bike Lane
- Bike Route



There has been good progress on bikeway striping and study corridors.



RECOMMENDED BIKEWAYS

- Shared-use Path (Class I)
- Buffered Bike Lane (Class II)
- Bike Lane (Class II)
- Bike Route (Class III)
- Bike Boulevard (Class III)
- Separated Bikeway (Class IV)

RECOMMENDED STUDY

- Corridor Study

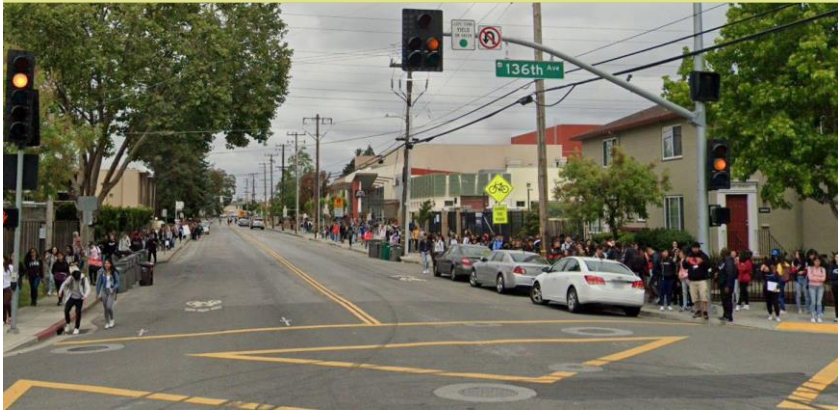
EXISTING BIKEWAYS

- Shared-use Path (Class I)
- Buffered Bike Lane (Class II)
- Bike Lane (Class II)
- Bike Route (Class III)



San Leandro's walking infrastructure is making progress.

Pedestrian Scramble



Pedestrian Hybrid Beacon



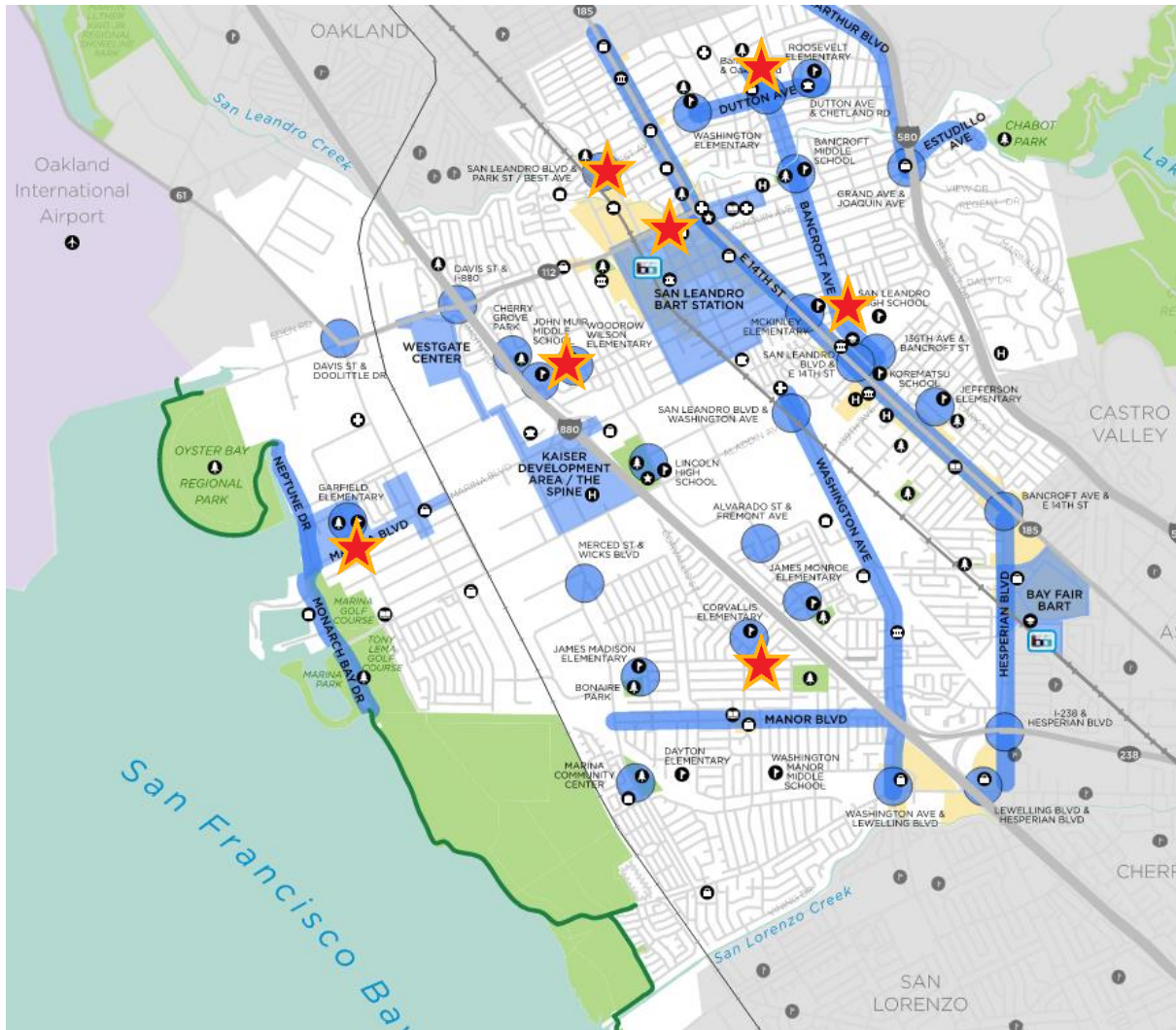
Rectangular Rapid Flashing Beacon



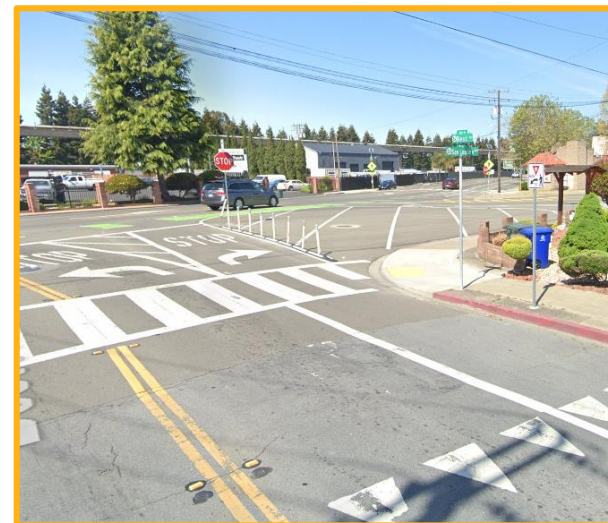
Wide and Smooth Sidewalks



Here are some highlights from the past five years of pedestrian projects.



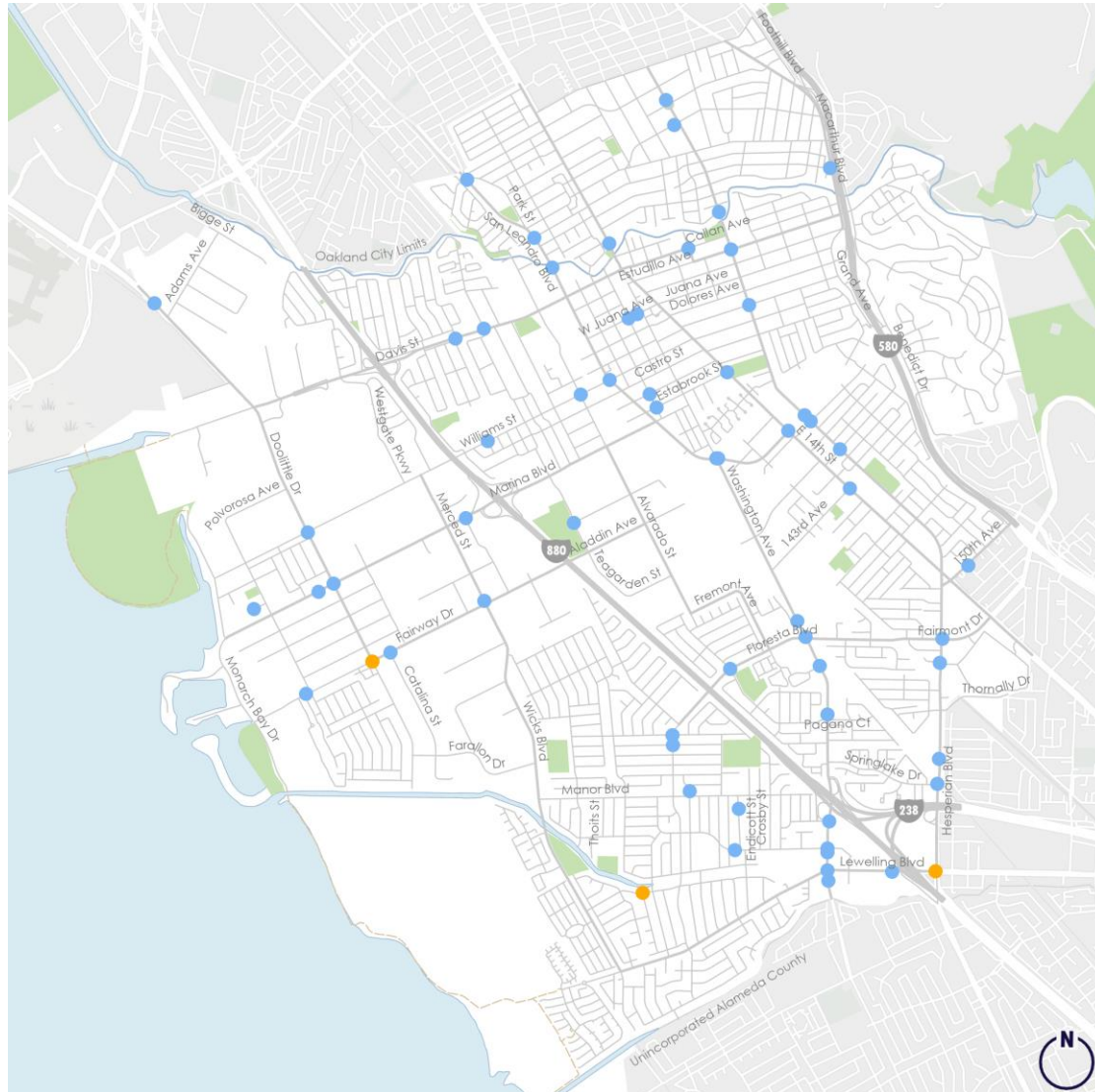
Davis Street/Carpentier Street



San Leandro Boulevard/Best Avenue



Bicycle Collisions, 2017-2021



Collision Severity (2017 – 2021)

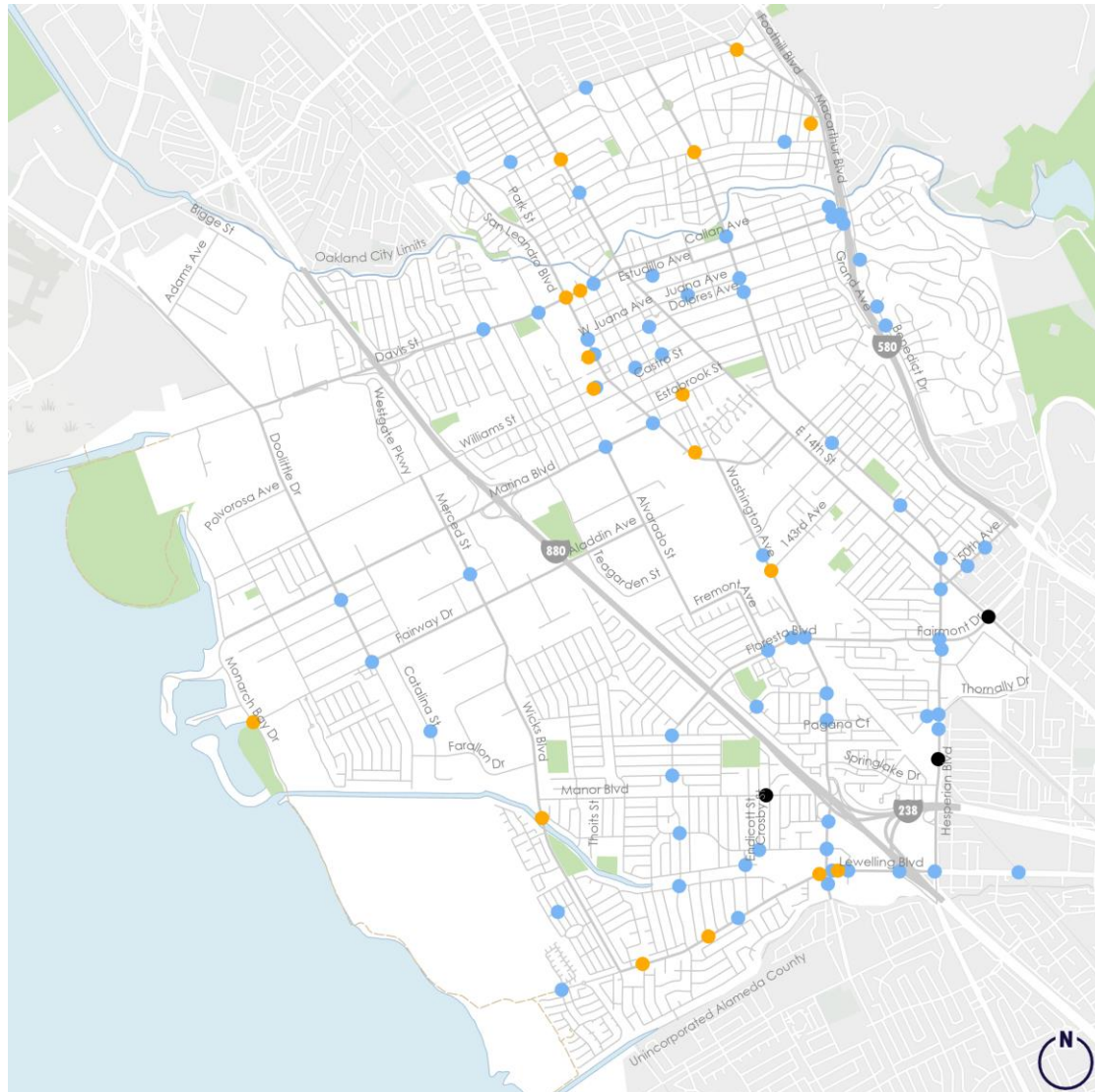
- Fatal (0)
- Severe Injury (3)
- Other Injury (63)

Source: Transportation Injury Mapping System (TIMS), 2017 – 2021

Does not include reported collisions on Caltrans-operated limited-access highways, such as I-880 and SR-238.



Pedestrian Collisions, 2017-2021



Collision Severity (2017 – 2021)

- Fatal (3)
- Severe Injury (17)
- Other Injury (79)

Source: Transportation Injury Mapping System (TIMS), 2017 – 2021

Does not include reported collisions on Caltrans-operated limited-access highways, such as I-880 and SR-238.





Next Steps and Discussion



Next Steps



Existing conditions web map
outreach through February 2024



Network and project list refresh



Discussion and Questions



- Do the draft Vision and Goals align with your experience? What is missing?
- Can you help spread the web map link among your networks?
- Do you have feedback on the plan process or next steps?

