

East Bay BRT and the San Leandro Transit Center



San Leandro City Council
Transportation and Facilities Committee
June 2, 2015

Opening Remarks

Elsa Ortiz

Vice President

AC Transit Board of Directors





East Bay BRT - Project Scope

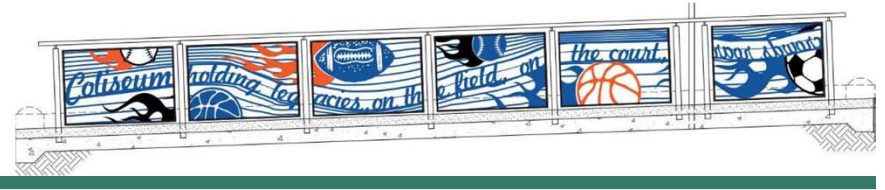
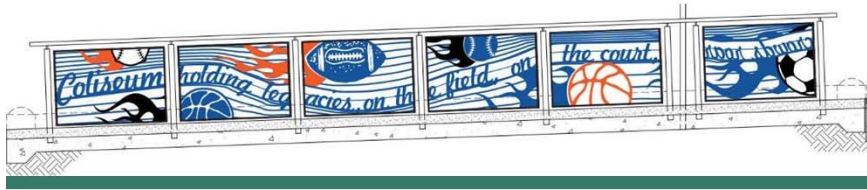
- 9.5-mile alignment with a combination of mixed-flow and 80% dedicated bus-only lanes
- Begins at the Uptown Station in Oakland and terminates at the San Leandro BART Transit Center
- Includes 34 stations – 46 total platforms
 - 21 median
 - 12 curbside
 - 1 southern terminus (BART)
- 27 hybrid-electric, low-emission, 60-foot articulated buses
- Revenue Service Date – November 27, 2017
- Features include:
 - Transit Signal Priority (TSP)
 - Level-boarding platforms
 - Shelters and benches
 - Ticket Vending Machines (TVMs)
 - Real-time arrival information
 - Surveillance cameras
 - Pre-paid boarding with proof of payment fare enforcement





Project Alignment



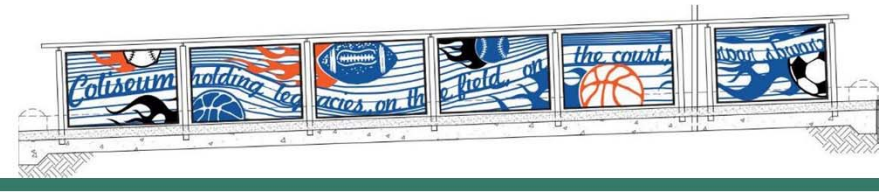
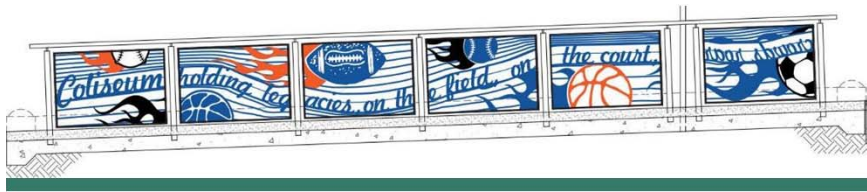


Project Schedule

Milestones / Deliverables	2012			2013				2014				2015				2016				2017			
	Q2	Q3	Q4	Q1	Q2	Q3	Q4	Q1	Q2	Q3	Q4	Q1	Q2	Q3	Q4	Q1	Q2	Q3	Q4	Q1	Q2	Q3	Q4
Milestones	▲ ROD			PE Complete ▲				SSGA Issuance ▲								▲ RSD							
Final Design				Advance Utilities				Parking Lots & Fruitvale Bypass				Roadway / Communications / Stations / Landscape											
Real Estate Acquisition																							
Vehicle Procurement																							
Construction								Advance Utilities				Parking Lots & Fruitvale Bypass				Roadway / Communications / Stations / Landscape							
Start-up and Testing																							

Critical Path

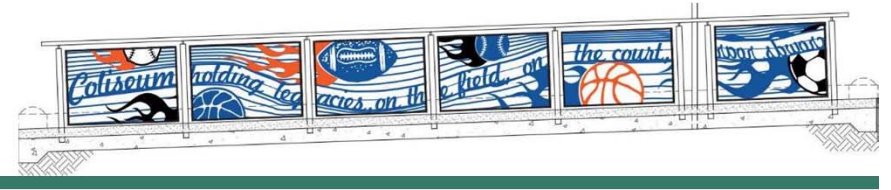
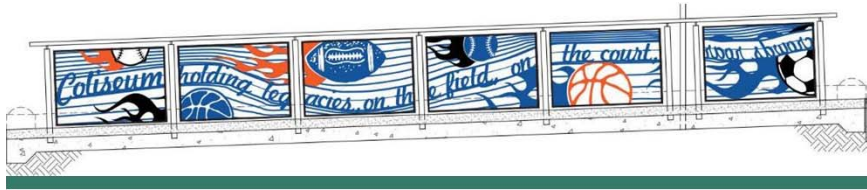




Project Labor Agreement/ Construction Careers Policy

- Targeted Hiring Goals
 - 20% apprentice utilization
 - 25% "Disadvantaged Resident" utilization
- Workforce Development Fund
 - \$0.10 for every craft hour to be utilized to train and refer "Disadvantaged Residents" to the project
- Community Oversight
 - Two advisory committees oversee adherence to policy provisions
 - Carl Jones, North CA Coalition of Black Trade Unionists & San Leandro resident serves on committee





Business Utilization

Goals

- Bid Package 1 – Advanced Utility Relocations
12% SBE goal
- Bid Package 2 – Parking Lots & Fruitvale Bypass
25% SBE goal
- AC Transit Districtwide
8% DBE goal

Actuals

- Bid Package 1- Advanced Utility Relocations
McGuire & Hester (local)
6 SBE firms listed; 3 DBE firms listed
- Bid Package 2 - Parking Lots & Fruitvale Bypass
Redwick - Prime contractor is a Small local business
5 DBE firms listed



East Bay BRT - Artistic Enhancements



San Leandro Transit Center

PROJECT DESCRIPTION

Expand the Transit Center at the San Leandro BART Station to accommodate:

- EB-BRT Southern Terminus
- All Existing AC Transit Routes
- All Shuttles and Locals



San Leandro Transit Center

PROJECT GOALS

Work collaboratively with BART and the City of San Leandro to provide the best overall solution:

- Provide for all required bus transit stops
- Provide for a Transit Center update
- Provide for improve pedestrian circulation
- Provide for improved ADA accessibility



San Leandro Transit Center

EXISTING BUS/SHUTTLE SERVICE

- 1 / 801 (South)
 - (Bay Fair BART / Fremont BART)
- 1 / 801 (North)
 - (Berkeley BART / Oakland)
- 75 Clockwise
- 75 Counterclockwise
- 85
- 89 Counterclockwise
- 89 Clockwise
- Links North Loop
- Links South Loop
- Flex Shuttle
- Kaiser Shuttle



San Leandro Transit Center

EXISTING BUS/SHUTTLE SERVICE

- 1 / 801 (South)
 - (Bay Fair BART / Fremont BART)
- 1 / 801 (North)
 - (Berkeley BART / Oakland)
- 75 Clockwise
- 75 Counterclockwise
- 85
- 89 Counterclockwise
- 89 Clockwise
- Links North Loop
- Links South Loop
- Flex Shuttle
- Kaiser Shuttle

FUTURE EAST BAY - BRT SERVICE

- 3 Raised Platforms (Minimum)
 - Arrivals every 5 minutes
 - 10 Minute Layovers

No Allowance for delays, emergencies, or mechanicals



San Leandro Transit Center

DESIGN CHALLENGES

- The design is “work in process” and there is no agreement on the Transit Center footprint
- Maintain the ingress north of the Transit Center entrance on San Leandro Blvd
- Minimize the loss of parking spaces
- Relocation and re-timing of the traffic signals
- Provide for a signaled pedestrian crossing



San Leandro Transit Center

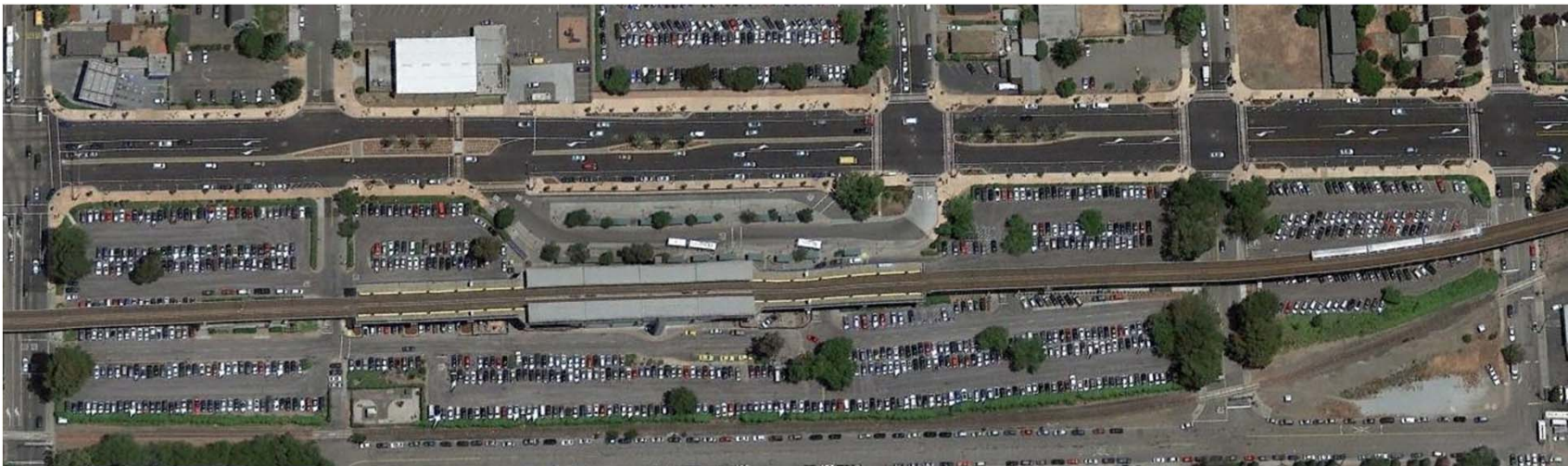
DESIGN CONSIDERATIONS – FROM THE BRT BUSES

- BRT buses are 60' articulated buses
- BRT buses utilizes level boarding which requires raise platforms at the station
- BRT buses provide for dual side boarding
- BRT buses require 127'8" separation in order to provide for pull around capabilities



San Leandro Transit Center

DESIGN ROADMAP – EXISTING CONDITIONS



San Leandro Transit Center

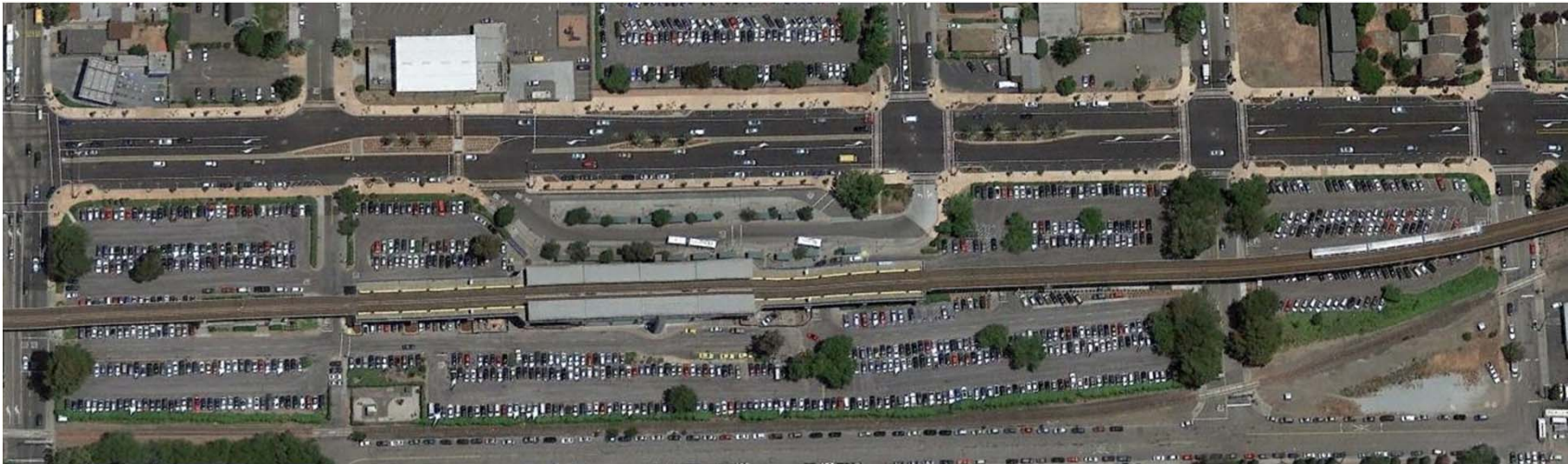
DESIGN ROADMAP – HISTORY (no agreement on a footprint)

- There is currently no agreement on a footprint
- Efforts before November 2014 produced a version 1
- Fresh eyes review focused on smaller footprint
- Revisited functional requirements
- Studied alternative designs
 - Four small footprints
 - Four large footprints
- Conducted simulation study
- Developed a concept plan for input and comment from partners



San Leandro Transit Center

DESIGN ROADMAP – EXISTING CONDITIONS



San Leandro Transit Center

DESIGN ROADMAP – CURRENT CONCEPT PLAN FOR COMMENTS



San Leandro Transit Center

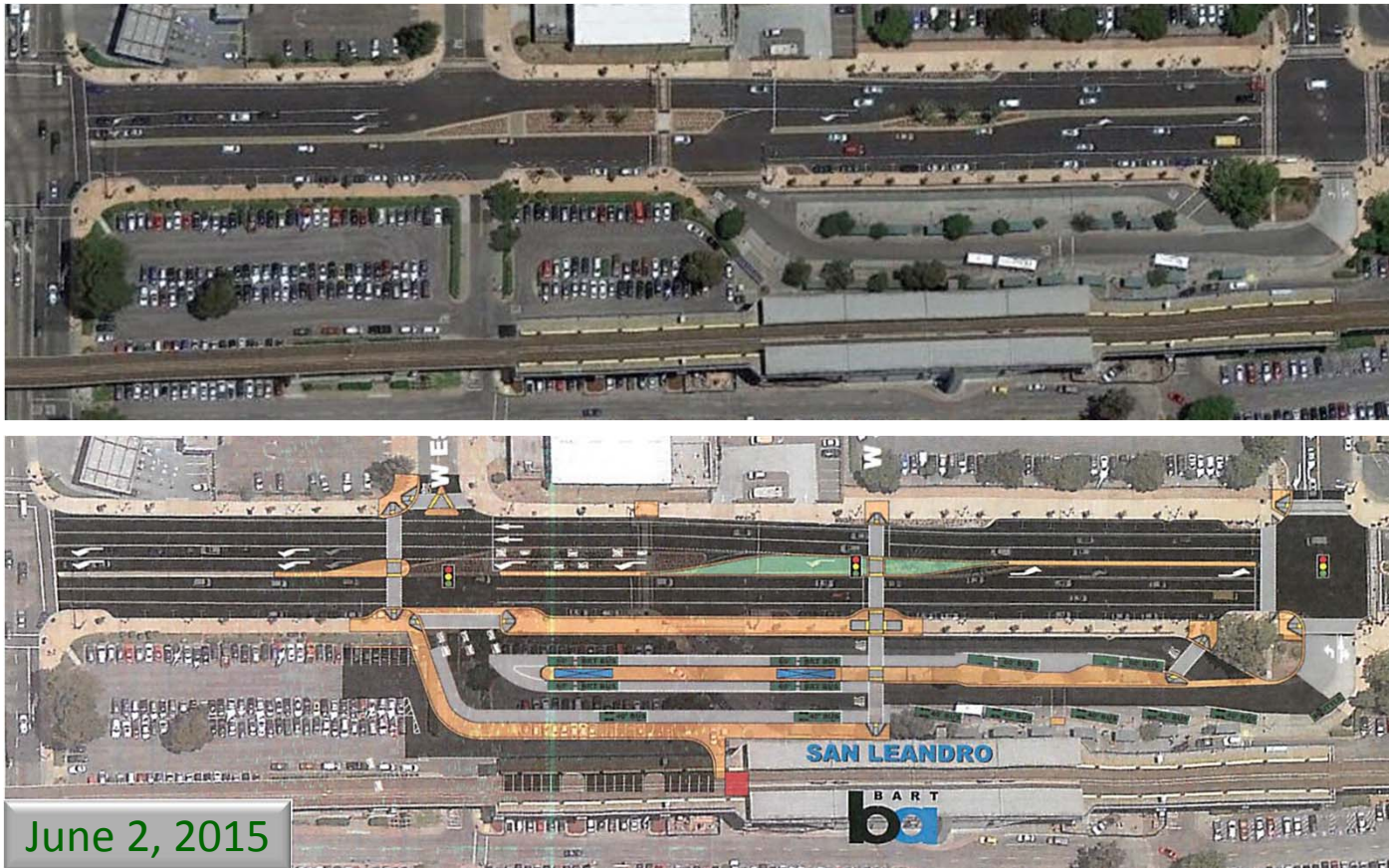
DESIGN ROADMAP – CURRENT CONCEPT PLAN FOR COMMENTS

- **Relocation of driveway entrance from San Leandro Blvd**
 - Loss of parking
 - Loss of ingress driveway north of station
- **Net BRT Island Platforms**
- **Rehabilitate remaining bays**
- **New Sidewalk along San Leandro Blvd**
- **New signaled pedestrian crossing of San Leandro Blvd aligned with the Paseo**



San Leandro Transit Center

DESIGN ROADMAP — CURRENT V CONCEPT PLAN



San Leandro Transit Center

DESIGN ROADMAP – CURRENT CONCEPT PLAN DISCUSSION

Discussion from City Elected Officials and Staff

- Comments
- Issues
- Suggestions



San Leandro Transit Center

BART COMMENTS

Hannah Lindelof

Senior Planner

BART Planning and Development



Participants

- **Elsa Ortiz,**
AC Transit Board of Directors
- **Aida Asuncion**
AC Transit Chief Planning, Engineering and Construction Officer
- **Joe Callaway**
AC Transit Engineering and Construction
- **Wil Buller**
AC Transit Service Planning
- **Rama Pochiraju**
AC Transit EB-BRT
- **Mitra Moheb**
AC Transit EB-BRT
- **Beverly Greene**
AC Transit Director of Community Relations
- **Estee Sepulveda**
AC Transit Community Relation
- **Hannah Lindelof**
BART
- **Mariana Parreiras**
BART
- **Chris Segur**
Parsons Transportation
- **Thomas Kronmeyer**
Community Design

