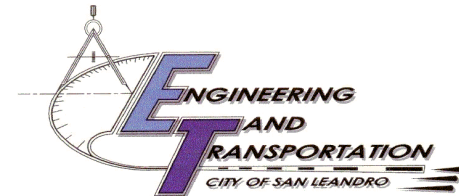


Bike and Pedestrian Project Update

APRIL 27, 2023




Bike to Wherever Day

San Leandro BART Station

- San Leandro Blvd and W Juana Ave

May 18, 7AM – 10 AM



The poster features a yellow bridge graphic at the top with the text "BAY AREA" in blue. Below this, the title "BIKE TO WHEREVER DAYS 2023" is displayed in large blue and green letters, accompanied by three bicycle icons in green, blue, and yellow. The central graphic shows the "Bay Area" in a stylized white font with a blue outline, set against a background of horizontal blue and yellow stripes. To the right of the text is a cartoon illustration of a person wearing a helmet and riding a bicycle. Below the "Bay Area" text, a list of counties is provided, each followed by a horizontal line for a signature: SAN FRANCISCO COUNTY, CONTRA COSTA COUNTY, SAN MATEO COUNTY, SOLANO COUNTY, NAPA COUNTY, MARIN COUNTY, SONOMA COUNTY, ALAMEDA COUNTY, and SANTA CLARA COUNTY. On the left side of the poster, there is a circular seal for the "CITY OF SAN LEANDRO INCORPORATED 1972". Below the seal is a map showing the intersection of San Leandro Blvd and W Juana Ave, with a blue location pin and the BART logo. Text below the map reads "ENERGIZER STATION AT SAN LEANDRO BART STATION" and "MAY 18, 7AM - 10AM". At the bottom right, the text "BIKE TO WHEREVER DAYS 2023" is repeated in yellow and white.

BAY AREA

BIKE TO WHEREVER DAYS 2023

Bay Area

SAN FRANCISCO COUNTY _____

CONTRA COSTA COUNTY _____

SAN MATEO COUNTY _____

SOLANO COUNTY _____

NAPA COUNTY _____

MARIN COUNTY _____

SONOMA COUNTY _____

ALAMEDA COUNTY _____

SANTA CLARA COUNTY _____

BIKE TO WHEREVER DAYS 2023

CITY OF SAN LEANDRO
INCORPORATED 1972

**ENERGIZER STATION AT
SAN LEANDRO BART
STATION**

MAY 18, 7AM - 10AM

Bicycle and Pedestrian Master Plan

5-YEAR UPDATE

PREPARATION FOR REQUEST
FOR PROPOSALS (RFP)



City of San Leandro

Bicycle & Pedestrian Master Plan

Update



Crosstown Corridors Project

City Council approved Crosstown Corridors Study November 2022



Annual Street Sealing 21-23 – Estudillo Ave

The City is evaluating feasibility and impacts for Class IV Bike Lanes on Estudillo Ave from Bancroft Ave to MacArthur Blvd

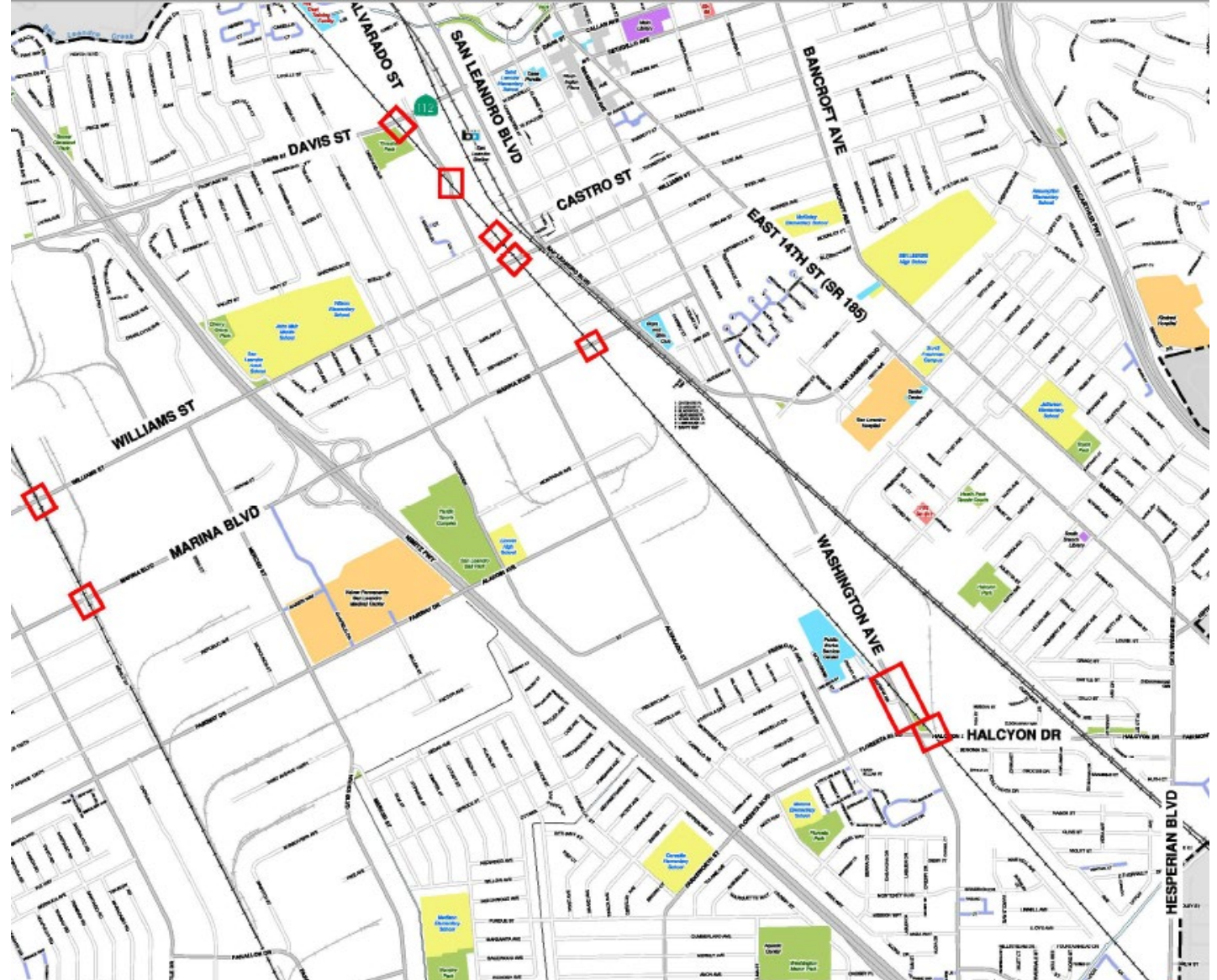


Railroad Safety Enhancement Program (RSEP)

Alameda CTC Project

Railroad safety improvements at grade crossing along Niles Subdivision and Costal Subdivision

65% Design



East Bay Greenway Project

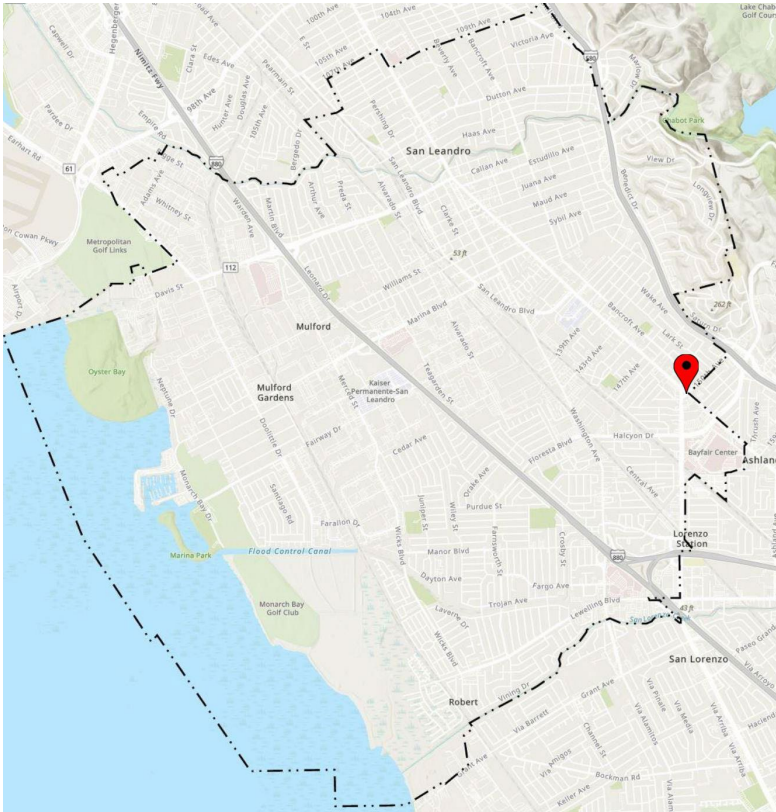
Alameda CTC Project Class IV Bike Lanes along E 14th St and San Leandro Blvd. Currently in 65% Design.



*For Illustrative Purposes Only

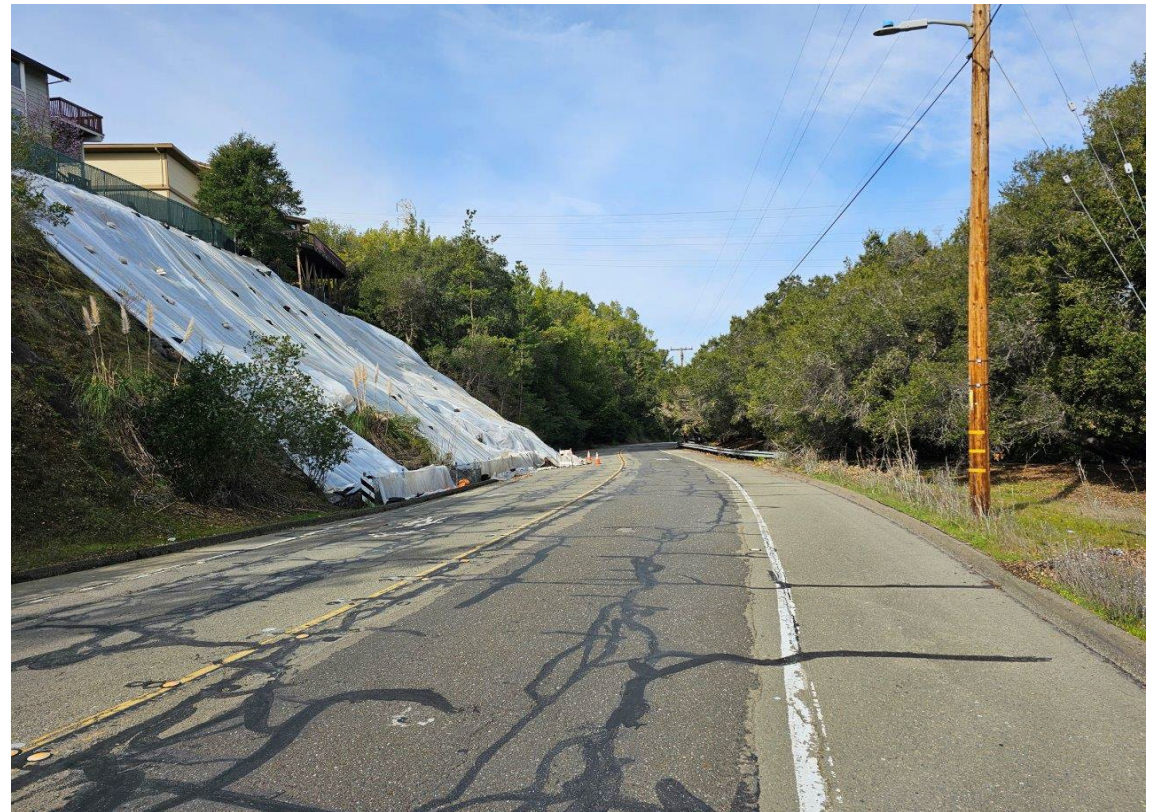
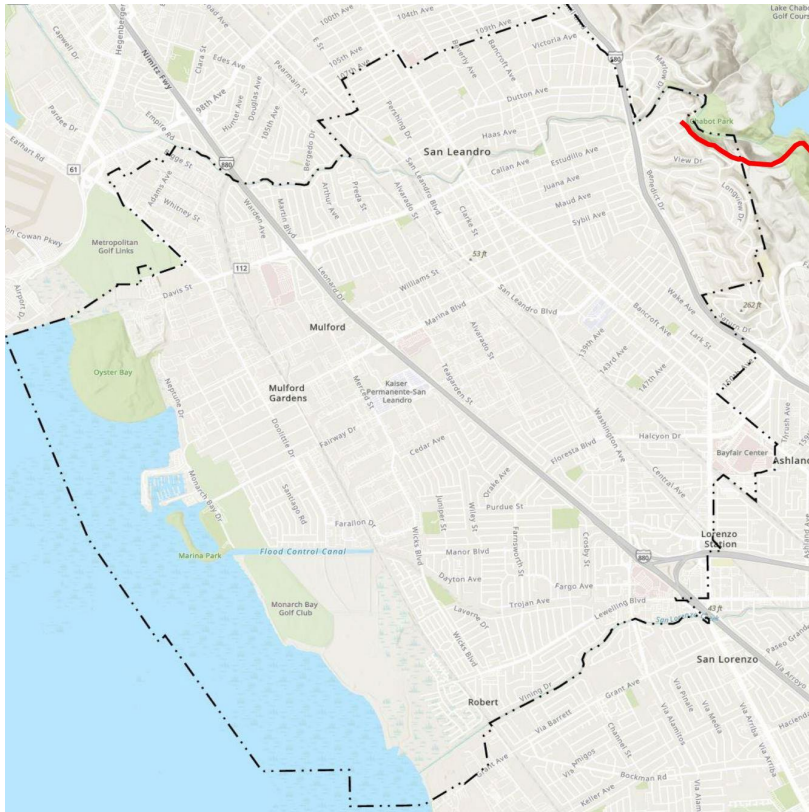
East 14th Street Bike Lane Pop-Up Demonstration

Hesperian Triangle – 6 Week Duration from May to mid-June



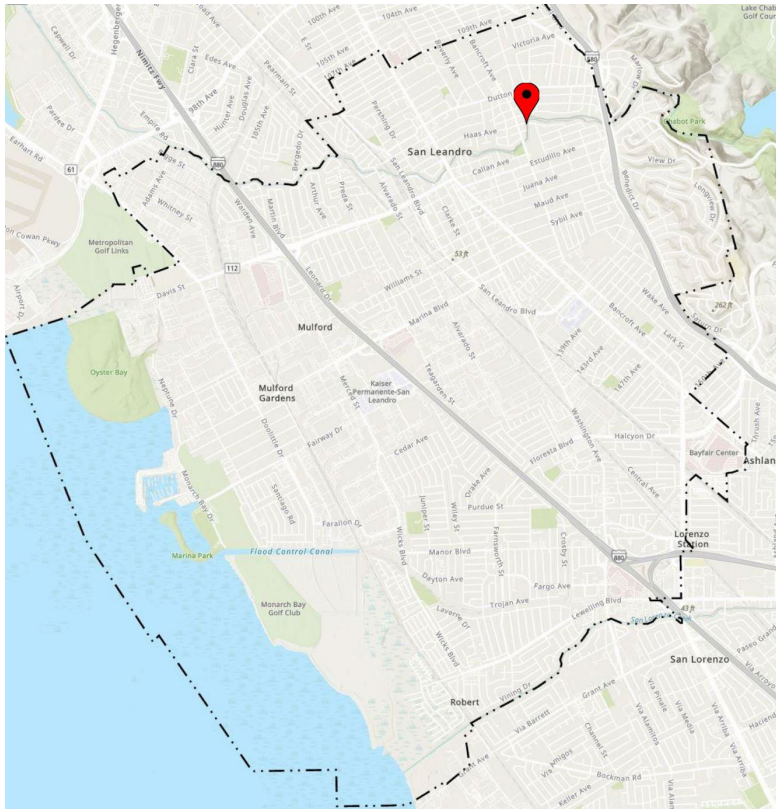
Lake Chabot Road

Temporarily limited to access for Bicycles and Pedestrians only & Emergency Vehicles



Cary Dr/Haas Ave Pedestrian Bridge

City is evaluating damage and estimating replacement cost



Recently Completed Projects

Class IV Bike Lanes on Grand Avenue

