

ACgo IN SAN LEANDRO

SAN LEANDRO CITY COUNCIL

May 21st, 2018

BACKGROUND

- * Voters approved Measure BB in 2014
 - * Included additional \$24 million for AC Transit Service Expansion
- * AC Transit conducted extensive outreach and analysis in 2015 about how to improve service
- * Implementation was split into three packages

BACKGROUND

- * Survey Results

- * Customers want more frequent, reliable service over a short walk to a bus stop
- * Customers want simple service, loops too confusing
- * Customers want longer service days

- * Plan Goals

- * Bring service up to minimum 30-minute frequency
- * Break loops into simple, easy-to-understand lines
- * Add weekend service and lengthen service day

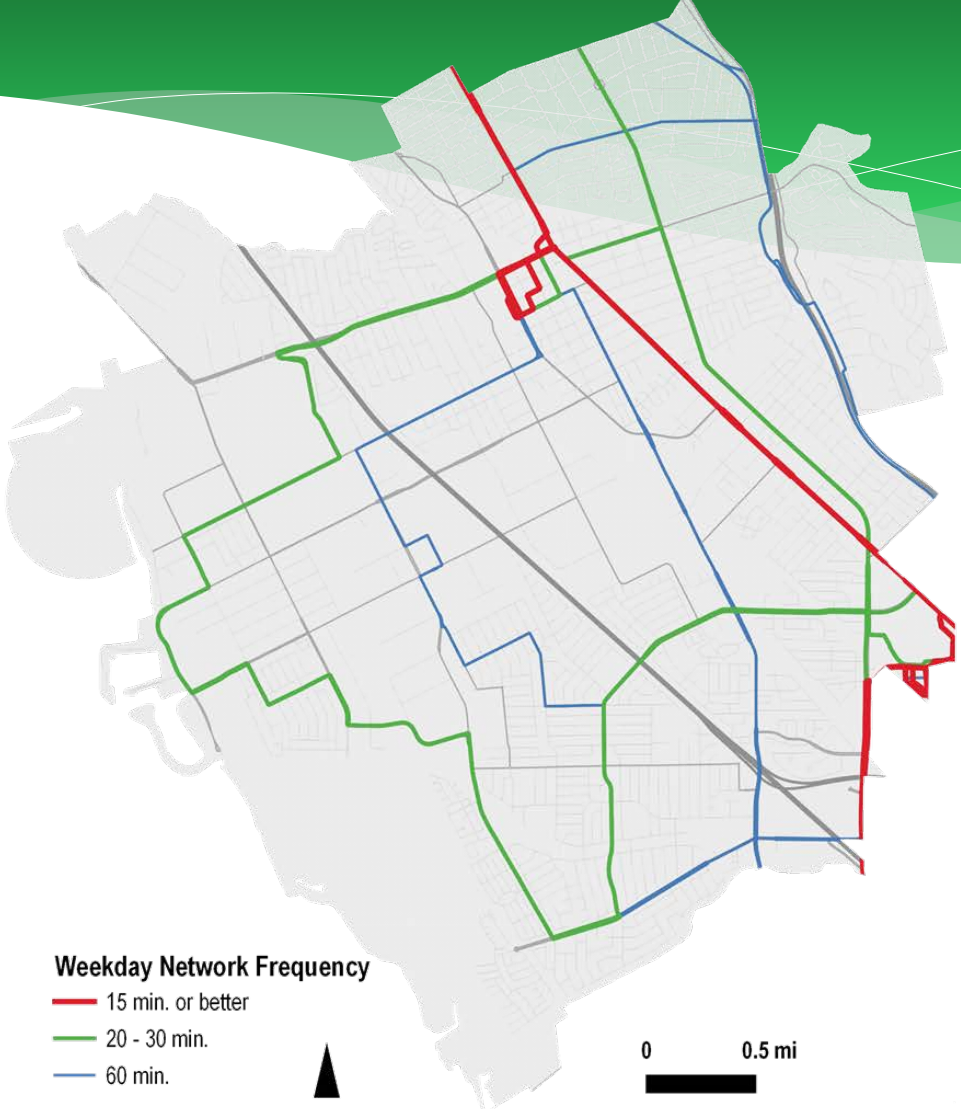
BACKGROUND

- * Core network of lines in San Leandro will operate every 30 minutes or better.
- * Service will start earlier and end later in the day.
- * New weekend service.
- * New crosstown service (Lines 34 and 35).
 - * Service every 15 minutes along Estudillo and Davis through Downtown.

IMPROVEMENTS

NOW		JUNE	
Line 32	Hourly service, 7 days week	Line 28	30-min service weekdays, new weekend service
Line 48	Hourly service, weekdays only	Line 28	30-min service weekdays, new weekend service
Line 75	Hourly service, weekdays only	Lines 28, 34, 35	30-min service weekdays, new weekend service
Line 85	Hourly service, weekdays only	Lines 28, 34, 35, 93	30-min service weekdays, new weekend service
Line 89	Hourly service, weekdays only	Lines 28, 34, 35	30-min service weekdays, new weekend service
Line 93	Hourly service, 7 days week	Lines 10, 34, and 93	Weekday service between 15 min and 40 min
Span	No later than 8:00 p.m.	No line earlier than 10:00 p.m., 7 days/week	

EXISTING WEEKDAY NETWORK



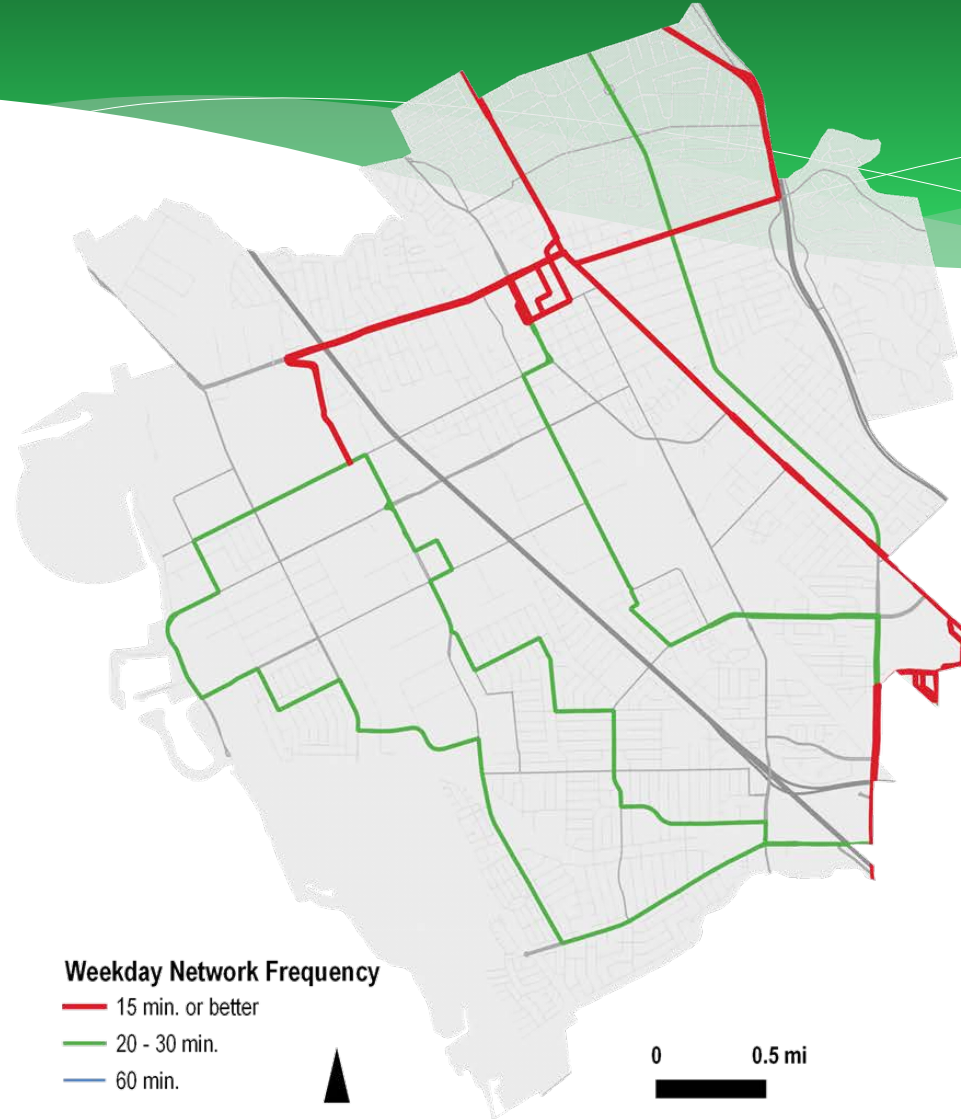
Weekday Network Frequency

- 15 min. or better
- 20 - 30 min.
- 60 min.



0 0.5 mi

NEW WEEKDAY NETWORK



Weekday Network Frequency

- 15 min. or better
- 20 - 30 min.
- 60 min.

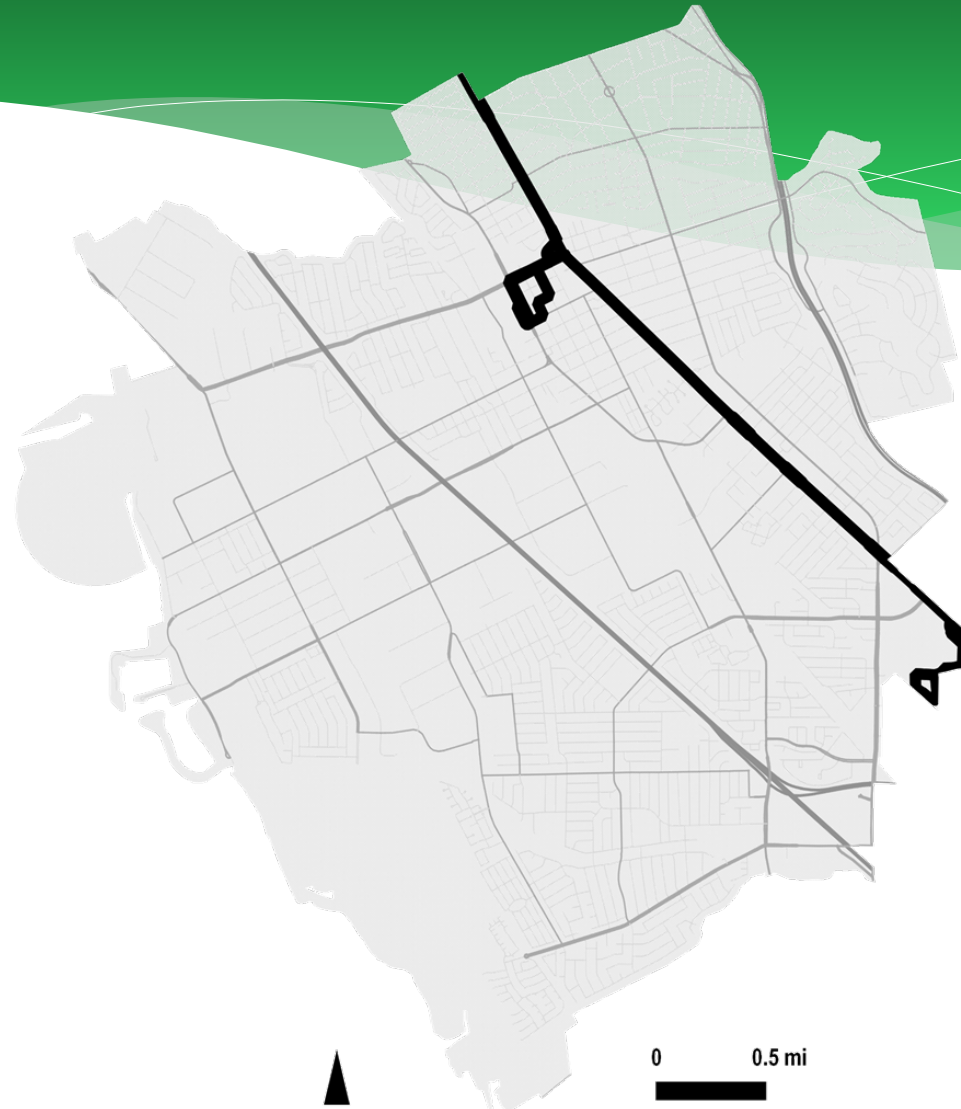
0 0.5 mi



EXISTING WEEKEND NETWORK



EXISTING LATE-NIGHT NETWORK



NEW STOPS



- New Stops
- Reactivated Stops



0 0.5 mi

BUS STOP CHANGES

- * June changes serve some new areas, discontinue service to other areas due to low ridership, and return service to some areas that had it in the past.
 - * 8 brand new stops
 - * 12 stops reactivated
 - * 45 stops discontinued in areas with low ridership
- * Some of the new or reactivated stops will require new red curb funded by AC Transit or ADA improvements to the adjacent sidewalk.
 - * Should the stop-related work not be completed, these areas will not be able to take advantage of the new service
 - * Some areas – including the Davis Street Family Resource Center – have advocated for the new service

TIMELINE

- * May/June 2018 | Work with City staff to prep new stops for service
- * Late May 2018 | Public outreach
 - * Website
 - * Ambassadors
 - * Car cards
 - * Brochures/flyers
- * June 17, 2018 | New service starts
- * December 2018 – March 2019 | Make any adjustments to service based on feedback and analysis

BRT UPDATE

\$213M Investment in Our Community

- Dedicated Bus Lanes
- High-Frequency Service (every 7 min. at peak)
- Level and Multiple-door Boarding
- Transit Signal Priority (TSP)
- 21 center-median stations and 12 curbside stations
- Public art, new pavement, walkways, and native landscaping
- Updated ADA ramps
- 27 new hybrid-electric, 5-door buses
- Sheltered waiting stations with seating, cameras, and benches
- Real-time message signs (RTMS)



BRT UPDATE

- San Leandro: 80% Complete
- Total Project: 30% Complete
- San Leandro Interim Condition Status: Estimated Early Summer 2018
- Revenue Service: December 2019



BRT UPDATE

Community Benefits in San Leandro to Date

- New Curb Ramps/Sidewalks – 48/57
- New/Modified Traffic Signals – 17/24
- New Street Lights – 0/2
- Station Platforms – 5/7

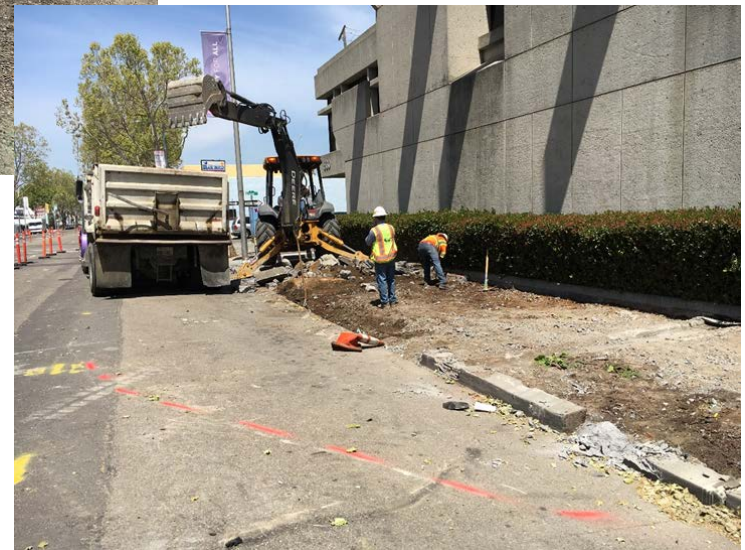


BRT STATION PROGRESS

Durant Station



Georgia Way Southbound Station



Georgia Way Northbound Station

BRT STATION PROGRES

Civic Center Southbound Station



Civic Center Northbound Station



Downtown Northbound Station



Downtown Southbound Station
(to be constructed)



BRT STATION FENCE WRAPS



COMING SOON: BUS RAPID TRANSIT Businesses Open During Construction

敬请期待：
BUS RAPID TRANSIT
施工期间
正常营业

PRÓXIMAMENTE:
BUS RAPID TRANSIT
Negocios abiertos
mientras dure la construcción

SẮP ĐẾN:
BUS RAPID TRANSIT
Các Doanh Nghiệp Mở Cửa
Trong Lúc Xây Xâit

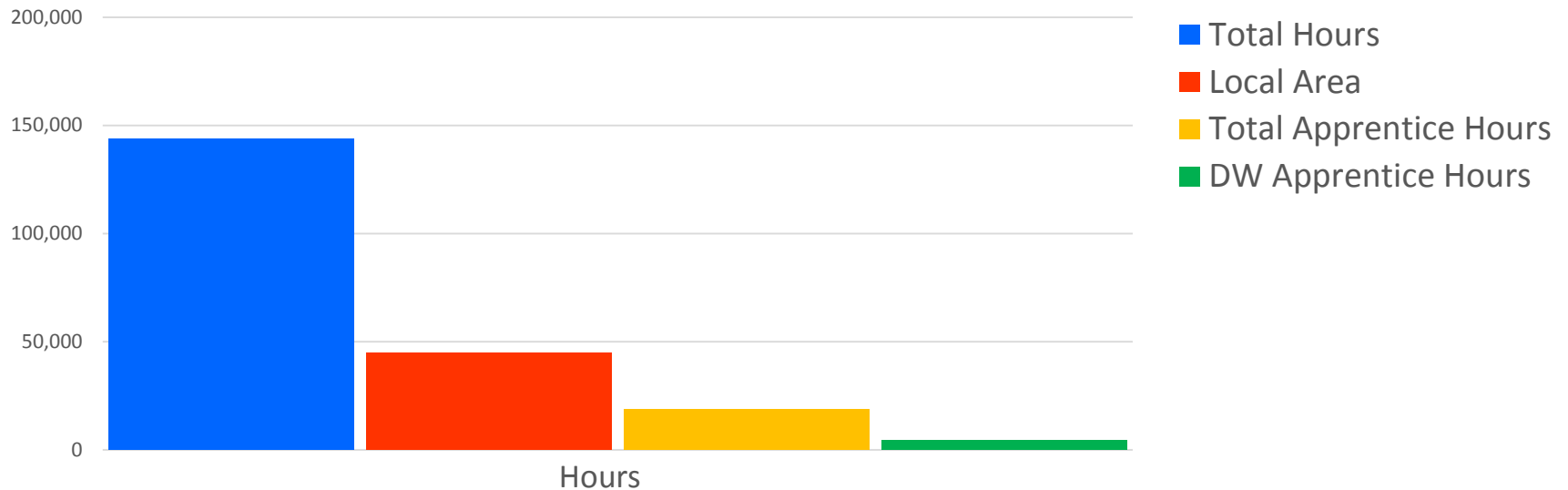


brt.actransit.org



WORKFORCE UTILIZATION

Work Hour Summary



Total Project Hours: 143,856

Total Local Hire Work Hours: 45,841 (31%)

Total Apprentice Hours: 18,842 (13%)

Total Disadvantaged Worker Hours: 4,328 (23% of Apprentice Hours)



WORKFORCE UTILIZATION

JURISDICTION	No. Of Workers	WORK HOURS	PERCENTAGE OF LOCAL	Wages Earned
San Leandro	13	6,034	13%	\$180,841

QUESTIONS?

Robert del Rosario
Director, Service Development
& Planning
rdelrosa@actransit.org
510-891-4734

David Wilkins,
Director, BRT Program
dwilkins@actransit.org
510-891-8211

Claudia Burgos
Director, Legislative Affairs &
Community Relations
cburgos@actransit.org
510-891-7124

