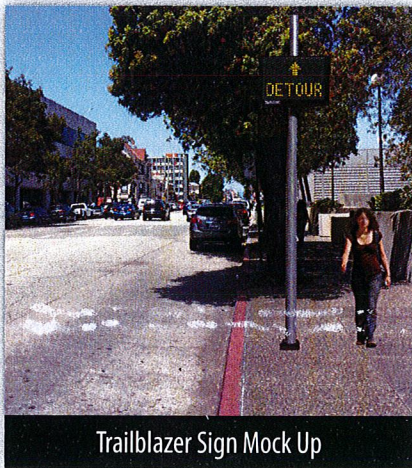




PROJECT DESCRIPTION

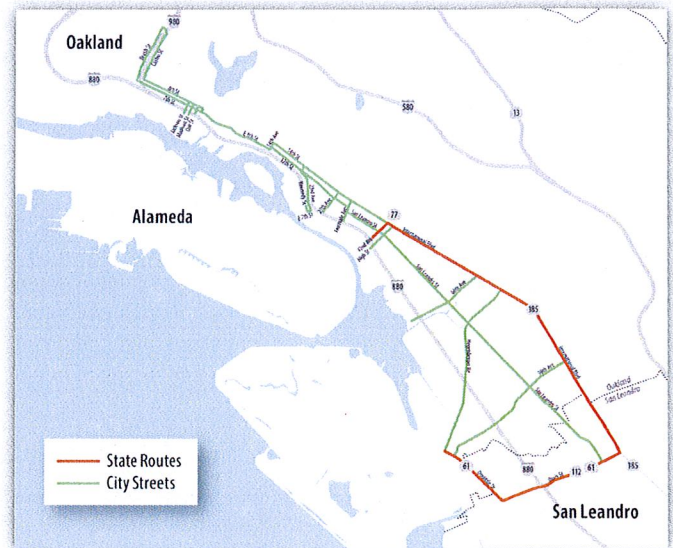
MTC, in partnership with the corridor's stakeholders, including Caltrans District 4, the Alameda County Transportation Commission, the Santa Clara Valley Transportation Authority and local cities have identified ICM strategies for implementation along the Interstate I-880 corridor.



Trailblazer Sign Mock Up

To manage traffic that naturally diverts from the freeway due to major incidents on I-880, the arterial incident management project proposes to install ITS equipment on arterial streets along the I-880 Corridor in

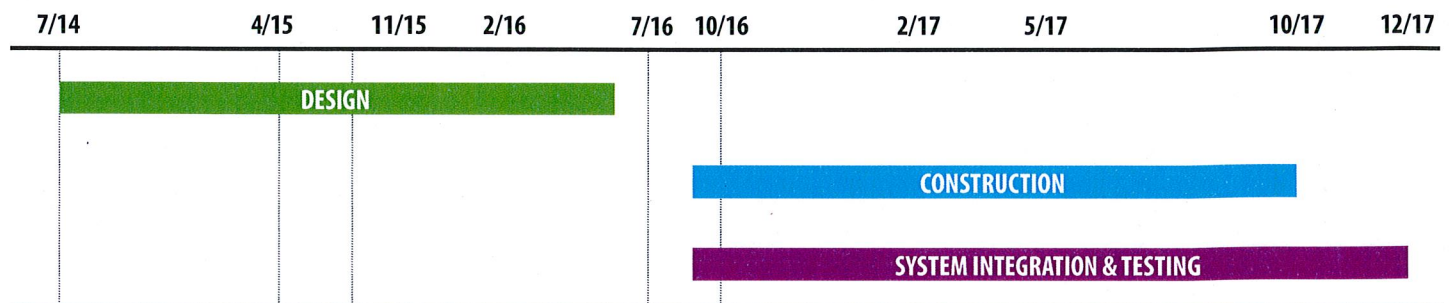
the Cities of San Leandro and Oakland. Project components include trailblazer signs, cameras, detection stations, signal coordination and communications improvements.



ICM BENEFITS

- Minimize impacts to local streets when a major incident occurs on I-880.
- Provide enhanced tools for traffic management and coordination between jurisdictions.
- Improved air quality through decreased motor vehicle emissions and fuel consumption.

SCHEDULE



PROJECT COST

The total cost for the I-880 ICM North Alameda Segment project is approximately \$14 million, which includes planning, design, construction, utilities and system integration.

