

# Memorandum for 1388 Bancroft Parking Study

To: City of San Leandro  
From: Dixon Resources Unlimited (DIXON)  
Date: May 3, 2021  
Subject: Memorandum for 1388 Bancroft Parking Study

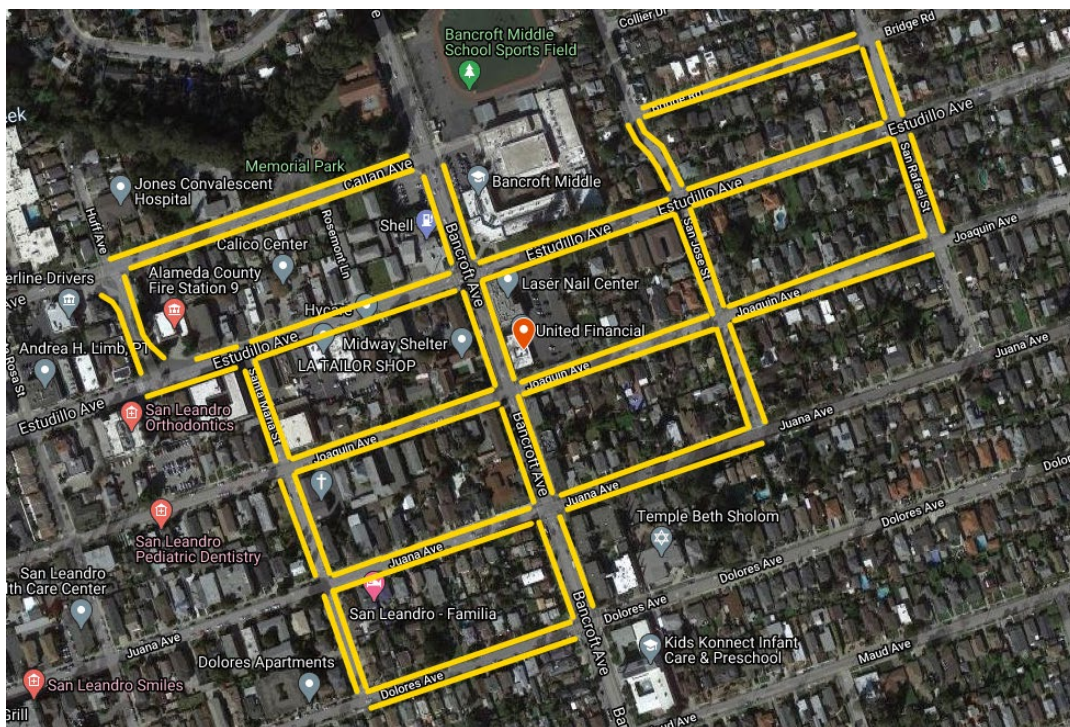
---

## Context

The City of San Leandro commissioned DIXON to conduct an on-street parking study for 50 block faces around 1388 Bancroft Ave. In September 2020, the San Leandro City Council approved a 42-unit residential project at 1388 Bancroft and required the project developer to provide a parking management plan (“PMP”). The parking study is intended to provide occupancy and turnover data to City Council and the general public to inform them of the parking impacts within the area of the development.

## Methodology

DIXON collected parking data to demonstrate the current on-street parking conditions for 50 block faces around the 1388 Bancroft Ave proposed development site (see below image).



Parking data was collected for two Wednesdays (3/3, 3/10), two Thursdays (3/4, 3/11), and two Saturdays (3/6, 3/13) in March 2021. This data was then used to calculate parking occupancy and

parking turnover values for the individual dates as well as the averages for Wednesday, Thursday, and Saturday. Parking inventory information was also collected to provide accurate occupancy results. Results for the parking study were calculated down to the block face level for assessment.

Partial license plate information was collected three times each day, on each block face in the study area, during morning, afternoon, and evening collection times. The license plate information was then used to calculate the average occupancy value and turnover time for the study area. Block faces with a parking occupancy rate greater than 85% is considered approaching the parking limit threshold. Parking occupancy rates less than 85% is considered as having adequate parking supply to address the parking impacts of the 1388 Bancroft project.

## **Key Results**

The parking study concisely shows ample parking available to the residents within the 1388 Bancroft area during all portions of the day, regardless of the day of the week, and, the results continue to demonstrate that most, if not all, residents can park within a reasonable walking distance (up to 800 feet, which is equivalent to approximately 1 or 2 blocks) of their residence.

The results of the parking study show that the parking occupancy surrounding 1388 Bancroft is low, below 65% in most cases. The parking occupancy map, which displays the aggregated results of the study, demonstrates that there is plenty of available on-street parking in the parking area throughout the day. This is especially true for the immediate block faces around the 1388 Bancroft Ave site. While some block faces occasionally exceeded 85% occupancy rate, they are the exception.

Several notes can be made about the areas around 1388 Bancroft. Joaquin Ave, bounded by Bancroft Ave to the West and San Jose St to the East, demonstrated less than 50% or less parking occupancy for each day of collection during each collection time. Bancroft Ave, bounded by Estudillo Ave to the North and Joaquin Ave to the South, demonstrated 50% or less parking occupancy for every day of collection, except for 1pm on March 11<sup>th</sup>. Joaquin Ave, bounded by Santa Maria St to the West and Bancroft Ave to the East, demonstrated between 50% occupancy and 85% during all collection time and dates, never exceeding the 85% occupancy mark. Finally, Bancroft Ave, bounded by Joaquin Ave to the North and Juana Ave to the South, consistently demonstrated less than 65% occupancy.

Parking turnover results show more than one third of all vehicles stayed parked all day, with vehicles staying longer on Saturdays compared to the weekdays. Similarly, vehicles parked for shorter time periods during the weekdays. Combined with occupancy data, the area around 1388 Bancroft displayed a predictable pattern of higher occupancy in the morning, lower occupancy in the afternoon, and occupancy levels returning to their higher levels in the evening.

# Rapid Parking Report

## City of San Leandro



Parking Area: San Leandro

Collection Range:  
3/3/21, 3/4/21, 3/6/21  
3/10/21, 3/11/21, and 3/13/21

**Table 1.1 Turnover by Date and Block-Face**

Location	Street	Date	0-4 Hours %	4-9 Hours %	>9 Hours %
Bancroft Ave	Dolores Ave-(Bancroft Ave )- Juana Ave	Wednesday, March 3, 2021	16.7%	16.7%	66.7%
		Thursday, March 4, 2021	36.4%	36.4%	27.3%
		Saturday, March 6, 2021	16.7%	16.7%	66.7%
		Wednesday, March 10, 2021	44.4%	33.3%	22.2%
		Thursday, March 11, 2021	40.0%	40.0%	20.0%
		Saturday, March 13, 2021	66.7%	8.3%	25.0%
	Estudillo Ave-(Bancroft Ave )-Joaquin Ave	Wednesday, March 3, 2021	100.0%	0.0%	
		Thursday, March 4, 2021	60.0%	40.0%	0.0%
		Saturday, March 6, 2021	100.0%	0.0%	
		Wednesday, March 10, 2021	66.7%	33.3%	0.0%
		Thursday, March 11, 2021	80.0%	20.0%	0.0%
		Saturday, March 13, 2021	83.3%	0.0%	16.7%
	Joaquin Ave-(Bancroft Ave )-Juana Ave	Wednesday, March 3, 2021	50.0%	50.0%	0.0%

\* Occupancies over 85% are highlighted.  
\*\* Cells that are blank represent absent data.

# Rapid Parking Report

## City of San Leandro



Parking Area: San Leandro

Collection Range:  
3/3/21, 3/4/21, 3/6/21  
3/10/21, 3/11/21, and 3/13/21

Location	Street	Date	0-4 Hours %	4-9 Hours %	>9 Hours %
Bancroft Ave	Joaquin Ave-(Bancroft Ave )-Juana Ave	Thursday, March 4, 2021	25.0%	75.0%	0.0%
		Saturday, March 6, 2021	50.0%	50.0%	
		Wednesday, March 10, 2021	25.0%	75.0%	0.0%
		Thursday, March 11, 2021	50.0%	50.0%	0.0%
		Saturday, March 13, 2021	66.7%	0.0%	33.3%
	Juana Ave-(Bancroft Ave )- Joaquin Ave	Wednesday, March 3, 2021	87.5%	12.5%	0.0%
		Thursday, March 4, 2021	88.9%	11.1%	0.0%
		Saturday, March 6, 2021	0.0%	33.3%	66.7%
		Wednesday, March 10, 2021	71.4%	0.0%	28.6%
		Thursday, March 11, 2021	75.0%	0.0%	25.0%
		Saturday, March 13, 2021	25.0%	50.0%	25.0%
	Juana Ave-(Bancroft Ave )-Dolores Ave	Wednesday, March 3, 2021	100.0%	0.0%	0.0%
		Thursday, March 4, 2021	66.7%	0.0%	33.3%
		Saturday, March 6, 2021	20.0%	20.0%	60.0%

\* Occupancies over 85% are highlighted.  
\*\* Cells that are blank represent absent data.

# Rapid Parking Report

## City of San Leandro



Parking Area: San Leandro

Collection Range:  
3/3/21, 3/4/21, 3/6/21  
3/10/21, 3/11/21, and 3/13/21

Location	Street	Date	0-4 Hours %	4-9 Hours %	>9 Hours %
Bancroft Ave	Juana Ave-(Bancroft Ave )-Dolores Ave	Wednesday, March 10, 2021	75.0%	12.5%	12.5%
		Thursday, March 11, 2021	40.0%	0.0%	60.0%
		Saturday, March 13, 2021	70.0%	20.0%	10.0%
Bridge Road	San Jose St-(Bridge Road )-San Rafael St	Wednesday, March 3, 2021	9.1%	18.2%	72.7%
		Thursday, March 4, 2021	26.7%	0.0%	73.3%
		Saturday, March 6, 2021	26.7%	6.7%	66.7%
		Wednesday, March 10, 2021	33.3%	8.3%	58.3%
		Thursday, March 11, 2021	33.3%	16.7%	50.0%
		Saturday, March 13, 2021	59.1%	40.9%	0.0%
	San Rafael St-(Bridge Road )- San Jose St	Wednesday, March 3, 2021	66.7%	11.1%	22.2%
		Thursday, March 4, 2021	44.4%	22.2%	33.3%
		Saturday, March 6, 2021	33.3%	22.2%	44.4%
		Wednesday, March 10, 2021	33.3%	16.7%	50.0%
Thursday, March 11, 2021		45.5%	27.3%	27.3%	

\* Occupancies over 85% are highlighted.  
\*\* Cells that are blank represent absent data.

# Rapid Parking Report

## City of San Leandro



Parking Area: San Leandro

Collection Range:  
3/3/21, 3/4/21, 3/6/21  
3/10/21, 3/11/21, and 3/13/21

Location	Street	Date	0-4 Hours %	4-9 Hours %	>9 Hours %
Bridge Road	San Rafael St-(Bridge Road )- San Jose St	Saturday, March 13, 2021	0.0%	83.3%	16.7%
Callan Ave	Huff Ave-(Callan Ave )- Bancroft Ave	Wednesday, March 3, 2021	42.9%	19.0%	38.1%
		Thursday, March 4, 2021	59.3%	11.1%	29.6%
		Saturday, March 6, 2021	42.9%	28.6%	28.6%
		Wednesday, March 10, 2021	33.3%	20.8%	45.8%
		Thursday, March 11, 2021	30.4%	21.7%	47.8%
		Saturday, March 13, 2021	18.2%	31.8%	50.0%
Dolores Ave	Bancroft Ave-(Dolores Ave )- Santa Maria St	Wednesday, March 3, 2021	33.3%	6.7%	60.0%
		Thursday, March 4, 2021	41.2%	11.8%	47.1%
		Saturday, March 6, 2021	40.0%	13.3%	46.7%
		Wednesday, March 10, 2021	42.1%	10.5%	47.4%
		Thursday, March 11, 2021	35.3%	29.4%	35.3%
		Saturday, March 13, 2021	50.0%	20.0%	30.0%
	Santa Maria St-(Dolores Ave )-Bancroft Ave	Wednesday, March 3, 2021	41.2%	11.8%	47.1%

\* Occupancies over 85% are highlighted.  
\*\* Cells that are blank represent absent data.

# Rapid Parking Report

## City of San Leandro



Parking Area: San Leandro

Collection Range:  
3/3/21, 3/4/21, 3/6/21  
3/10/21, 3/11/21, and 3/13/21

Location	Street	Date	0-4 Hours %	4-9 Hours %	>9 Hours %
Dolores Ave	Santa Maria St-(Dolores Ave )-Bancroft Ave	Thursday, March 4, 2021	7.1%	14.3%	78.6%
		Saturday, March 6, 2021	14.3%	28.6%	57.1%
		Wednesday, March 10, 2021	62.5%	12.5%	25.0%
		Thursday, March 11, 2021	47.4%	26.3%	26.3%
		Saturday, March 13, 2021	12.5%	31.3%	56.3%
Estudillo Ave	Bancroft Ave-(Estudillo Ave )- Santa Maria St	Wednesday, March 3, 2021	69.6%	26.1%	4.3%
		Thursday, March 4, 2021	82.8%	10.3%	6.9%
		Saturday, March 6, 2021	44.4%	22.2%	33.3%
		Wednesday, March 10, 2021	70.4%	22.2%	7.4%
		Thursday, March 11, 2021	76.0%	12.0%	12.0%
		Saturday, March 13, 2021	57.9%	21.1%	21.1%
	Bancroft Ave-(Estudillo Ave )-San Jose St	Wednesday, March 3, 2021	50.0%	0.0%	50.0%
		Thursday, March 4, 2021	25.0%	12.5%	62.5%
		Saturday, March 6, 2021	33.3%	11.1%	55.6%

\* Occupancies over 85% are highlighted.  
\*\* Cells that are blank represent absent data.

# Rapid Parking Report

## City of San Leandro



Parking Area: San Leandro

Collection Range:  
3/3/21, 3/4/21, 3/6/21  
3/10/21, 3/11/21, and 3/13/21

Location	Street	Date	0-4 Hours %	4-9 Hours %	>9 Hours %
Estudillo Ave	Bancroft Ave-(Estudillo Ave )-San Jose St	Wednesday, March 10, 2021	30.0%	30.0%	40.0%
		Thursday, March 11, 2021	33.3%	33.3%	33.3%
		Saturday, March 13, 2021	55.6%	11.1%	33.3%
	Huff Ave-(Estudillo Ave )-Santa Maria St	Wednesday, March 3, 2021	40.0%	0.0%	60.0%
		Thursday, March 4, 2021	33.3%	0.0%	66.7%
		Saturday, March 6, 2021	25.0%	0.0%	75.0%
		Wednesday, March 10, 2021	50.0%	0.0%	50.0%
		Thursday, March 11, 2021	62.5%	0.0%	37.5%
		Saturday, March 13, 2021	42.9%	28.6%	28.6%
	San Jose St-(Estudillo Ave )- Bancroft Ave	Wednesday, March 3, 2021	100.0%		
		Thursday, March 4, 2021	66.7%	33.3%	0.0%
		Saturday, March 6, 2021	50.0%	50.0%	
		Wednesday, March 10, 2021	66.7%	0.0%	33.3%
		Thursday, March 11, 2021	66.7%	0.0%	33.3%

\* Occupancies over 85% are highlighted.  
\*\* Cells that are blank represent absent data.



# Rapid Parking Report

## City of San Leandro



Parking Area: San Leandro

Collection Range:  
3/3/21, 3/4/21, 3/6/21  
3/10/21, 3/11/21, and 3/13/21

Location	Street	Date	0-4 Hours %	4-9 Hours %	>9 Hours %
Estudillo Ave	San Jose St-(Estudillo Ave )- Bancroft Ave	Saturday, March 13, 2021	0.0%	50.0%	50.0%
	San Jose St-(Estudillo Ave )- San Rafael St	Wednesday, March 3, 2021	23.1%	23.1%	53.8%
		Thursday, March 4, 2021	14.3%	28.6%	57.1%
		Saturday, March 6, 2021	10.0%	20.0%	70.0%
		Wednesday, March 10, 2021	18.2%	18.2%	63.6%
		Thursday, March 11, 2021	35.7%	35.7%	28.6%
		Saturday, March 13, 2021	0.0%	35.7%	64.3%
		San Rafael St-(Estudillo Ave )- San Jose St	Wednesday, March 3, 2021	54.5%	9.1%
	Thursday, March 4, 2021		44.4%	11.1%	44.4%
	Saturday, March 6, 2021		18.2%	36.4%	45.5%
	Wednesday, March 10, 2021		42.9%	28.6%	28.6%
	Thursday, March 11, 2021		62.5%	12.5%	25.0%
	Saturday, March 13, 2021		54.5%	9.1%	36.4%
	Santa Maria St-(Estudillo Ave )- Huff Ave	Saturday, March 13, 2021	40.0%	20.0%	40.0%

\* Occupancies over 85% are highlighted.  
\*\* Cells that are blank represent absent data.

# Rapid Parking Report

## City of San Leandro



Parking Area: San Leandro

Collection Range:  
3/3/21, 3/4/21, 3/6/21  
3/10/21, 3/11/21, and 3/13/21

Location	Street	Date	0-4 Hours %	4-9 Hours %	>9 Hours %
Estudillo Ave	Santa Maria St- (Estudillo Ave )-Bancroft Ave	Wednesday, March 3, 2021	55.6%	27.8%	16.7%
		Thursday, March 4, 2021	68.4%	10.5%	21.1%
		Saturday, March 6, 2021	62.5%	18.8%	18.8%
		Wednesday, March 10, 2021	53.3%	26.7%	20.0%
		Thursday, March 11, 2021	66.7%	16.7%	16.7%
		Saturday, March 13, 2021	75.0%	6.3%	18.8%
Huff Ave	Callan Ave-(Huff Ave )- Estudillo Ave	Wednesday, March 3, 2021	30.0%	10.0%	60.0%
		Thursday, March 4, 2021	44.4%	0.0%	55.6%
		Saturday, March 6, 2021	14.3%	28.6%	57.1%
		Wednesday, March 10, 2021	50.0%	10.0%	40.0%
		Thursday, March 11, 2021	54.5%	0.0%	45.5%
		Saturday, March 13, 2021	40.0%	0.0%	60.0%
	Estudillo Ave-(Huff Ave )- Callan Ave	Wednesday, March 3, 2021	30.8%	0.0%	69.2%
		Thursday, March 4, 2021	23.1%	7.7%	69.2%

\* Occupancies over 85% are highlighted.  
\*\* Cells that are blank represent absent data.

# Rapid Parking Report

## City of San Leandro



Parking Area: San Leandro

Collection Range:  
3/3/21, 3/4/21, 3/6/21  
3/10/21, 3/11/21, and 3/13/21

Location	Street	Date	0-4 Hours %	4-9 Hours %	>9 Hours %
Huff Ave	Estudillo Ave-(Huff Ave )- Callan Ave	Saturday, March 6, 2021	23.1%	15.4%	61.5%
		Wednesday, March 10, 2021	23.1%	30.8%	46.2%
		Thursday, March 11, 2021	50.0%	6.3%	43.8%
		Saturday, March 13, 2021	16.7%	8.3%	75.0%
Joaquin Ave	Bancroft Ave-(Joaquin Ave )- Santa Maria St	Wednesday, March 3, 2021	42.1%	42.1%	15.8%
		Thursday, March 4, 2021	47.1%	17.6%	35.3%
		Saturday, March 6, 2021	42.1%	31.6%	26.3%
		Wednesday, March 10, 2021	52.6%	10.5%	36.8%
		Thursday, March 11, 2021	58.3%	16.7%	25.0%
		Saturday, March 13, 2021	26.7%	6.7%	66.7%
	Bancroft Ave-(Joaquin Ave )-San Jose St	Wednesday, March 3, 2021	100.0%	0.0%	
		Thursday, March 4, 2021	100.0%	0.0%	
		Saturday, March 6, 2021	100.0%	0.0%	
		Wednesday, March 10, 2021	100.0%		

\* Occupancies over 85% are highlighted.  
\*\* Cells that are blank represent absent data.

# Rapid Parking Report

## City of San Leandro



Parking Area: San Leandro

Collection Range:  
3/3/21, 3/4/21, 3/6/21  
3/10/21, 3/11/21, and 3/13/21

Location	Street	Date	0-4 Hours %	4-9 Hours %	>9 Hours %
Joaquin Ave	Bancroft Ave-(Joaquin Ave )-San Jose St	Thursday, March 11, 2021	100.0%		
		Saturday, March 13, 2021	100.0%		
	San Jose St-(Joaquin Ave )- Bancroft Ave	Wednesday, March 3, 2021	60.0%	20.0%	20.0%
		Thursday, March 4, 2021	40.0%	20.0%	40.0%
		Saturday, March 6, 2021	0.0%	33.3%	66.7%
		Wednesday, March 10, 2021	33.3%	33.3%	33.3%
		Thursday, March 11, 2021	83.3%	0.0%	16.7%
		Saturday, March 13, 2021	50.0%	0.0%	50.0%
	San Jose St-(Joaquin Ave )-San Rafael St	Wednesday, March 3, 2021	18.8%	37.5%	43.8%
		Thursday, March 4, 2021	0.0%	8.3%	91.7%
		Saturday, March 6, 2021	21.4%	21.4%	57.1%
		Wednesday, March 10, 2021	0.0%	35.7%	64.3%
		Thursday, March 11, 2021	21.4%	21.4%	57.1%
		Saturday, March 13, 2021	26.7%	20.0%	53.3%

\* Occupancies over 85% are highlighted.  
\*\* Cells that are blank represent absent data.

# Rapid Parking Report

## City of San Leandro



Parking Area: San Leandro

Collection Range:  
3/3/21, 3/4/21, 3/6/21  
3/10/21, 3/11/21, and 3/13/21

Location	Street	Date	0-4 Hours %	4-9 Hours %	>9 Hours %
Joaquin Ave	San Rafael St-(Joaquin Ave )- San Jose St	Wednesday, March 3, 2021	41.7%	25.0%	33.3%
		Thursday, March 4, 2021	50.0%	41.7%	8.3%
		Saturday, March 6, 2021	46.2%	23.1%	30.8%
		Wednesday, March 10, 2021	50.0%	14.3%	35.7%
		Thursday, March 11, 2021	38.9%	33.3%	27.8%
		Saturday, March 13, 2021	25.0%	33.3%	41.7%
	Santa Maria St-(Joaquin Ave )-Bancroft Ave	Wednesday, March 3, 2021	36.8%	31.6%	31.6%
		Thursday, March 4, 2021	26.3%	42.1%	31.6%
		Saturday, March 6, 2021	42.1%	31.6%	26.3%
		Wednesday, March 10, 2021	36.8%	26.3%	36.8%
		Thursday, March 11, 2021	43.5%	21.7%	34.8%
		Saturday, March 13, 2021	38.9%	33.3%	27.8%
Juana Ave	Bancroft Ave-(Juana Ave )- Santa Maria St	Wednesday, March 3, 2021	55.6%	38.9%	5.6%
		Thursday, March 4, 2021	73.7%	21.1%	5.3%

\* Occupancies over 85% are highlighted.  
\*\* Cells that are blank represent absent data.

# Rapid Parking Report

## City of San Leandro



Parking Area: San Leandro

Collection Range:  
3/3/21, 3/4/21, 3/6/21  
3/10/21, 3/11/21, and 3/13/21

Location	Street	Date	0-4 Hours %	4-9 Hours %	>9 Hours %
Juana Ave	Bancroft Ave-(Juana Ave )- Santa Maria St	Saturday, March 6, 2021	61.5%	23.1%	15.4%
		Wednesday, March 10, 2021	62.5%	12.5%	25.0%
		Thursday, March 11, 2021	65.0%	15.0%	20.0%
		Saturday, March 13, 2021	46.7%	6.7%	46.7%
	Bancroft Ave-(Juana Ave )-San Jose St	Wednesday, March 3, 2021	37.5%	12.5%	50.0%
		Thursday, March 4, 2021	26.7%	20.0%	53.3%
		Saturday, March 6, 2021	47.4%	21.1%	31.6%
		Wednesday, March 10, 2021	37.5%	25.0%	37.5%
		Thursday, March 11, 2021	35.3%	23.5%	41.2%
		Saturday, March 13, 2021	27.8%	33.3%	38.9%
	San Jose St-(Juana Ave )- Bancroft Ave	Wednesday, March 3, 2021	33.3%	26.7%	40.0%
		Thursday, March 4, 2021	38.9%	38.9%	22.2%
		Saturday, March 6, 2021	41.2%	29.4%	29.4%
Wednesday, March 10, 2021		38.5%	23.1%	38.5%	

\* Occupancies over 85% are highlighted.  
\*\* Cells that are blank represent absent data.

# Rapid Parking Report

## City of San Leandro



Parking Area: San Leandro

Collection Range:  
3/3/21, 3/4/21, 3/6/21  
3/10/21, 3/11/21, and 3/13/21

Location	Street	Date	0-4 Hours %	4-9 Hours %	>9 Hours %	
Juana Ave	San Jose St-(Juana Ave )- Bancroft Ave	Thursday, March 11, 2021	50.0%	14.3%	35.7%	
		Saturday, March 13, 2021	33.3%	11.1%	55.6%	
	Santa Maria St-(Juana Ave )-Bancroft Ave	Wednesday, March 3, 2021	58.8%	23.5%	17.6%	
		Thursday, March 4, 2021	46.7%	20.0%	33.3%	
		Saturday, March 6, 2021	17.6%	52.9%	29.4%	
		Wednesday, March 10, 2021	42.9%	42.9%	14.3%	
		Thursday, March 11, 2021	43.8%	25.0%	31.3%	
		Saturday, March 13, 2021	41.2%	29.4%	29.4%	
	San Jose St	Bridge Rd-(San Jose St )- Estudillo Ave	Wednesday, March 3, 2021	16.7%	16.7%	66.7%
			Thursday, March 4, 2021	28.6%	14.3%	57.1%
Saturday, March 6, 2021			33.3%	33.3%	33.3%	
Wednesday, March 10, 2021			50.0%	12.5%	37.5%	
Thursday, March 11, 2021			37.5%	62.5%	0.0%	
Saturday, March 13, 2021			0.0%	33.3%	66.7%	

\* Occupancies over 85% are highlighted.  
\*\* Cells that are blank represent absent data.

# Rapid Parking Report

## City of San Leandro



Parking Area: San Leandro

Collection Range:  
3/3/21, 3/4/21, 3/6/21  
3/10/21, 3/11/21, and 3/13/21

Location	Street	Date	0-4 Hours %	4-9 Hours %	>9 Hours %
San Jose St	Estudillo Ave-(San Jose St )- Bridge Rd	Wednesday, March 3, 2021	0.0%	100.0%	
		Thursday, March 4, 2021	100.0%		
		Saturday, March 6, 2021	100.0%		
		Thursday, March 11, 2021	100.0%	0.0%	0.0%
		Saturday, March 13, 2021	0.0%	100.0%	0.0%
	Estudillo Ave-(San Jose St )-Joaquin Ave	Wednesday, March 3, 2021	66.7%	0.0%	33.3%
		Thursday, March 4, 2021	20.0%	0.0%	80.0%
		Saturday, March 6, 2021	20.0%	20.0%	60.0%
		Wednesday, March 10, 2021	33.3%	16.7%	50.0%
		Thursday, March 11, 2021	50.0%	25.0%	25.0%
		Saturday, March 13, 2021	33.3%	33.3%	33.3%
	Joaquin Ave-(San Jose St )- Estudillo Ave	Wednesday, March 3, 2021	42.9%	14.3%	42.9%
		Thursday, March 4, 2021	37.5%	25.0%	37.5%
		Saturday, March 6, 2021	25.0%	25.0%	50.0%

\* Occupancies over 85% are highlighted.  
\*\* Cells that are blank represent absent data.



# Rapid Parking Report

## City of San Leandro



Parking Area: San Leandro

Collection Range:  
3/3/21, 3/4/21, 3/6/21  
3/10/21, 3/11/21, and 3/13/21

Location	Street	Date	0-4 Hours %	4-9 Hours %	>9 Hours %
San Jose St	Joaquin Ave-(San Jose St )- Estudillo Ave	Wednesday, March 10, 2021	20.0%	20.0%	60.0%
		Thursday, March 11, 2021	57.1%	28.6%	14.3%
		Saturday, March 13, 2021	37.5%	12.5%	50.0%
	Joaquin Ave-(San Jose St )-Juana Ave	Wednesday, March 3, 2021	14.3%	14.3%	71.4%
		Thursday, March 4, 2021	0.0%	20.0%	80.0%
		Saturday, March 6, 2021	44.4%	0.0%	55.6%
		Wednesday, March 10, 2021	28.6%	28.6%	42.9%
		Thursday, March 11, 2021	62.5%	12.5%	25.0%
		Saturday, March 13, 2021	28.6%	42.9%	28.6%
	Juana Ave-(San Jose St )- Joaquin Ave	Wednesday, March 3, 2021	60.0%	0.0%	40.0%
		Thursday, March 4, 2021	40.0%	20.0%	40.0%
		Saturday, March 6, 2021	0.0%	0.0%	100.0%
		Wednesday, March 10, 2021	0.0%	0.0%	100.0%
		Thursday, March 11, 2021	0.0%	0.0%	100.0%

\* Occupancies over 85% are highlighted.  
\*\* Cells that are blank represent absent data.

# Rapid Parking Report

## City of San Leandro



Parking Area: San Leandro

Collection Range:  
3/3/21, 3/4/21, 3/6/21  
3/10/21, 3/11/21, and 3/13/21

Location	Street	Date	0-4 Hours %	4-9 Hours %	>9 Hours %
San Jose St	Juana Ave-(San Jose St )- Joaquin Ave	Saturday, March 13, 2021	33.3%	0.0%	66.7%
San Rafael St	Bridge Rd-(San Rafael St )-Estudillo Ave	Wednesday, March 3, 2021	50.0%	25.0%	25.0%
		Thursday, March 4, 2021	40.0%	0.0%	60.0%
		Saturday, March 6, 2021	50.0%	16.7%	33.3%
		Wednesday, March 10, 2021	25.0%	50.0%	25.0%
		Thursday, March 11, 2021	50.0%	0.0%	50.0%
		Saturday, March 13, 2021	0.0%	50.0%	50.0%
		Wednesday, March 3, 2021	28.6%	14.3%	57.1%
	Estudillo Ave-(San Rafael St )- Bridge Rd	Thursday, March 4, 2021	33.3%	16.7%	50.0%
		Saturday, March 6, 2021	14.3%	57.1%	28.6%
		Wednesday, March 10, 2021	0.0%	40.0%	60.0%
		Thursday, March 11, 2021	20.0%	20.0%	60.0%
		Saturday, March 13, 2021	14.3%	14.3%	71.4%
	Estudillo Ave-(San Rafael St )-Joaquin Ave	Wednesday, March 3, 2021	33.3%	33.3%	33.3%

\* Occupancies over 85% are highlighted.  
\*\* Cells that are blank represent absent data.

# Rapid Parking Report

## City of San Leandro



Parking Area: San Leandro

Collection Range:  
3/3/21, 3/4/21, 3/6/21  
3/10/21, 3/11/21, and 3/13/21

Location	Street	Date	0-4 Hours %	4-9 Hours %	>9 Hours %
San Rafael St	Estudillo Ave-(San Rafael St )-Joaquin Ave	Thursday, March 4, 2021	50.0%	0.0%	50.0%
		Saturday, March 6, 2021	0.0%	50.0%	50.0%
		Wednesday, March 10, 2021	0.0%	0.0%	100.0%
		Thursday, March 11, 2021	0.0%	100.0%	
		Saturday, March 13, 2021	0.0%	66.7%	33.3%
		Wednesday, March 3, 2021	0.0%	0.0%	100.0%
	Joaquin Ave-(San Rafael St )- Estudillo Ave	Thursday, March 4, 2021	0.0%	0.0%	100.0%
		Saturday, March 6, 2021	0.0%	100.0%	
		Wednesday, March 10, 2021	0.0%	100.0%	
		Thursday, March 11, 2021	50.0%	0.0%	50.0%
		Saturday, March 13, 2021	0.0%	0.0%	100.0%
		Wednesday, March 3, 2021	0.0%	25.0%	75.0%
Santa Maria St	Dolores Ave-(Santa Maria St )- Juana Ave	Thursday, March 4, 2021	0.0%	12.5%	87.5%
		Saturday, March 6, 2021	33.3%	16.7%	50.0%

\* Occupancies over 85% are highlighted.  
\*\* Cells that are blank represent absent data.

# Rapid Parking Report

## City of San Leandro



Parking Area: San Leandro

Collection Range:  
3/3/21, 3/4/21, 3/6/21  
3/10/21, 3/11/21, and 3/13/21

Location	Street	Date	0-4 Hours %	4-9 Hours %	>9 Hours %
Santa Maria St	Dolores Ave-(Santa Maria St )- Juana Ave	Wednesday, March 10, 2021	28.6%	0.0%	71.4%
		Thursday, March 11, 2021	12.5%	25.0%	62.5%
		Saturday, March 13, 2021	0.0%	0.0%	100.0%
	Estudillo Ave-(Santa Maria St )-Joaquin Ave	Wednesday, March 3, 2021	80.0%	0.0%	20.0%
		Thursday, March 4, 2021	60.0%	40.0%	0.0%
		Saturday, March 6, 2021	40.0%	40.0%	20.0%
		Wednesday, March 10, 2021	66.7%	22.2%	11.1%
		Thursday, March 11, 2021	50.0%	33.3%	16.7%
		Saturday, March 13, 2021	0.0%	20.0%	80.0%
	Joaquin Ave-(Santa Maria St )- Estudillo Ave	Wednesday, March 3, 2021	42.9%	28.6%	28.6%
		Thursday, March 4, 2021	66.7%	16.7%	16.7%
		Saturday, March 6, 2021	33.3%	50.0%	16.7%
		Wednesday, March 10, 2021	66.7%	22.2%	11.1%
		Thursday, March 11, 2021	100.0%	0.0%	0.0%

\* Occupancies over 85% are highlighted.  
\*\* Cells that are blank represent absent data.

# Rapid Parking Report

## City of San Leandro



Parking Area: San Leandro

Collection Range:  
3/3/21, 3/4/21, 3/6/21  
3/10/21, 3/11/21, and 3/13/21

Location	Street	Date	0-4 Hours %	4-9 Hours %	>9 Hours %
Santa Maria St	Joaquin Ave-(Santa Maria St )- Estudillo Ave	Saturday, March 13, 2021	25.0%	50.0%	25.0%
	Joaquin Ave-(Santa Maria St )-Juana Ave	Wednesday, March 3, 2021	25.0%	50.0%	25.0%
		Thursday, March 4, 2021	50.0%	12.5%	37.5%
		Saturday, March 6, 2021	14.3%	0.0%	85.7%
		Wednesday, March 10, 2021	28.6%	42.9%	28.6%
		Thursday, March 11, 2021	16.7%	0.0%	83.3%
		Saturday, March 13, 2021	0.0%	33.3%	66.7%
		Wednesday, March 3, 2021	40.0%	60.0%	0.0%
	Juana Ave-(Santa Maria St )- Joaquin Ave	Thursday, March 4, 2021	33.3%	50.0%	16.7%
		Saturday, March 6, 2021	0.0%	0.0%	100.0%
		Wednesday, March 10, 2021	50.0%	50.0%	0.0%
		Thursday, March 11, 2021	87.5%	12.5%	0.0%
		Saturday, March 13, 2021	50.0%	25.0%	25.0%
	Juana Ave-(Santa Maria St )-Dolores Ave	Wednesday, March 3, 2021	16.7%	0.0%	83.3%

\* Occupancies over 85% are highlighted.  
\*\* Cells that are blank represent absent data.

# Rapid Parking Report

## City of San Leandro



Parking Area: San Leandro

Collection Range:  
3/3/21, 3/4/21, 3/6/21  
3/10/21, 3/11/21, and 3/13/21

Location	Street	Date	0-4 Hours %	4-9 Hours %	>9 Hours %
Santa Maria St	Juana Ave-(Santa Maria St )-Dolores Ave	Thursday, March 4, 2021	16.7%	16.7%	66.7%
		Saturday, March 6, 2021	25.0%	12.5%	62.5%
		Wednesday, March 10, 2021	30.0%	30.0%	40.0%
		Thursday, March 11, 2021	28.6%	14.3%	57.1%
		Saturday, March 13, 2021	33.3%	33.3%	33.3%

\* Occupancies over 85% are highlighted.  
\*\* Cells that are blank represent absent data.

# Rapid Parking Report

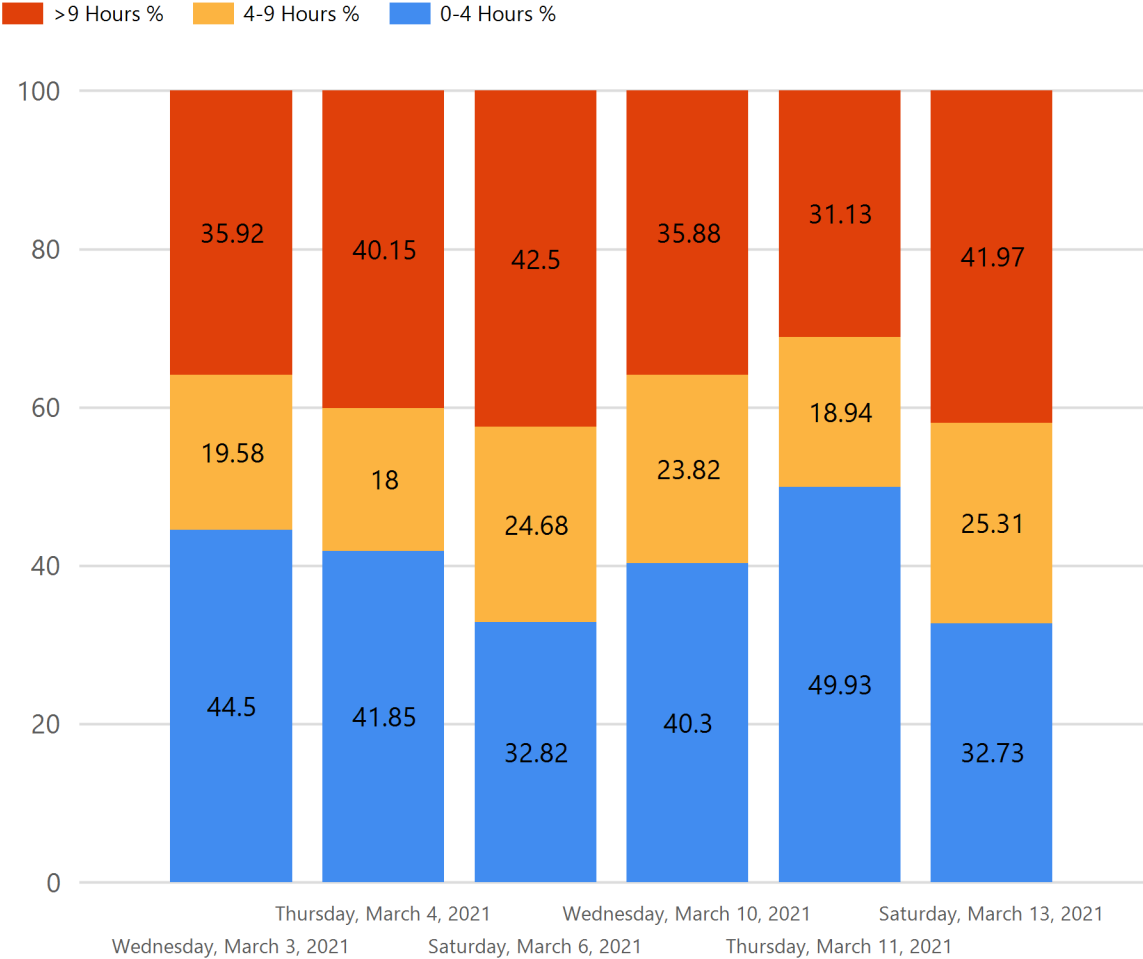
## City of San Leandro



Parking Area: San Leandro

Collection Range:  
 3/3/21, 3/4/21, 3/6/21  
 3/10/21, 3/11/21, and 3/13/21

**Chart 1.1 Turnover by Date and Block-Face**



\* Occupancies over 85% are highlighted.  
 \*\* Cells that are blank represent absent data.

# Rapid Parking Report

## City of San Leandro



Parking Area: San Leandro

Collection Range:  
3/3/21, 3/4/21, 3/6/21  
3/10/21, 3/11/21, and 3/13/21

**Table 2.1 Turnover by Day of the Week and Block-Face**

Location	Street	Day of the Week	0-4 Hours %	4-9 Hours %	>9 Hours %
Bancroft Ave	Dolores Ave-(Bancroft Ave )- Juana Ave	Wednesday	33.3%	26.7%	40.0%
		Thursday	37.5%	37.5%	25.0%
		Saturday	50.0%	11.1%	38.9%
	Estudillo Ave-(Bancroft Ave )-Joaquin Ave	Wednesday	83.3%	16.7%	0.0%
		Thursday	73.3%	26.7%	0.0%
		Saturday	87.5%	0.0%	12.5%
	Joaquin Ave-(Bancroft Ave )-Juana Ave	Wednesday	37.5%	62.5%	0.0%
		Thursday	40.0%	60.0%	0.0%
		Saturday	60.0%	20.0%	20.0%
	Juana Ave-(Bancroft Ave )- Joaquin Ave	Wednesday	80.0%	6.7%	13.3%
		Thursday	82.4%	5.9%	11.8%
		Saturday	14.3%	42.9%	42.9%
	Juana Ave-(Bancroft Ave )-Dolores Ave	Wednesday	86.7%	6.7%	6.7%
		Thursday	54.5%	0.0%	45.5%
		Saturday	53.3%	20.0%	26.7%
Bridge Road	San Jose St-(Bridge Road )-San Rafael St	Wednesday	21.7%	13.0%	65.2%
		Thursday	29.6%	7.4%	63.0%
		Saturday	45.9%	27.0%	27.0%
	San Rafael St-(Bridge Road )- San Jose St	Wednesday	53.3%	13.3%	33.3%
		Thursday	45.0%	25.0%	30.0%
		Saturday	20.0%	46.7%	33.3%

\* Occupancies over 85% are highlighted.  
\*\* Cells that are blank represent absent data.



# Rapid Parking Report

## City of San Leandro



Parking Area: San Leandro

Collection Range:  
3/3/21, 3/4/21, 3/6/21  
3/10/21, 3/11/21, and 3/13/21

Location	Street	Day of the Week	0-4 Hours %	4-9 Hours %	>9 Hours %
Callan Ave	Huff Ave-(Callan Ave )- Bancroft Ave	Wednesday	37.8%	20.0%	42.2%
		Thursday	46.0%	16.0%	38.0%
		Saturday	32.0%	30.0%	38.0%
Dolores Ave	Bancroft Ave-(Dolores Ave )- Santa Maria St	Wednesday	38.2%	8.8%	52.9%
		Thursday	38.2%	20.6%	41.2%
		Saturday	45.7%	17.1%	37.1%
	Santa Maria St-(Dolores Ave )-Bancroft Ave	Wednesday	51.5%	12.1%	36.4%
		Thursday	30.3%	21.2%	48.5%
		Saturday	13.3%	30.0%	56.7%
Estudillo Ave	Bancroft Ave-(Estudillo Ave )- Santa Maria St	Wednesday	70.0%	24.0%	6.0%
		Thursday	79.6%	11.1%	9.3%
		Saturday	51.4%	21.6%	27.0%
	Bancroft Ave-(Estudillo Ave )-San Jose St	Wednesday	40.0%	15.0%	45.0%
		Thursday	29.4%	23.5%	47.1%
		Saturday	44.4%	11.1%	44.4%
	Huff Ave-(Estudillo Ave )-Santa Maria St	Wednesday	45.5%	0.0%	54.5%
		Thursday	50.0%	0.0%	50.0%
		Saturday	36.4%	18.2%	45.5%
	San Jose St-(Estudillo Ave )- Bancroft Ave	Wednesday	75.0%	0.0%	25.0%
		Thursday	66.7%	16.7%	16.7%
		Saturday	25.0%	50.0%	25.0%

\* Occupancies over 85% are highlighted.  
\*\* Cells that are blank represent absent data.

# Rapid Parking Report

## City of San Leandro



Parking Area: San Leandro

Collection Range:  
3/3/21, 3/4/21, 3/6/21  
3/10/21, 3/11/21, and 3/13/21

Location	Street	Day of the Week	0-4 Hours %	4-9 Hours %	>9 Hours %	
Estudillo Ave	San Jose St-(Estudillo Ave )- San Rafael St	Wednesday	20.8%	20.8%	58.3%	
		Thursday	25.0%	32.1%	42.9%	
		Saturday	4.2%	29.2%	66.7%	
	San Rafael St-(Estudillo Ave )- San Jose St	Wednesday	50.0%	16.7%	33.3%	
		Thursday	52.9%	11.8%	35.3%	
		Saturday	36.4%	22.7%	40.9%	
	Santa Maria St-(Estudillo Ave )- Huff Ave	Saturday	40.0%	20.0%	40.0%	
		Santa Maria St-(Estudillo Ave )-Bancroft Ave	Wednesday	54.5%	27.3%	18.2%
			Thursday	67.6%	13.5%	18.9%
Saturday	68.8%		12.5%	18.8%		
Huff Ave	Callan Ave-(Huff Ave )- Estudillo Ave	Wednesday	40.0%	10.0%	50.0%	
		Thursday	50.0%	0.0%	50.0%	
		Saturday	29.4%	11.8%	58.8%	
	Estudillo Ave-(Huff Ave )- Callan Ave	Wednesday	26.9%	15.4%	57.7%	
		Thursday	37.9%	6.9%	55.2%	
		Saturday	20.0%	12.0%	68.0%	
Joaquin Ave	Bancroft Ave-(Joaquin Ave )- Santa Maria St	Wednesday	47.4%	26.3%	26.3%	
		Thursday	53.7%	17.1%	29.3%	
		Saturday	35.3%	20.6%	44.1%	
	Bancroft Ave-(Joaquin Ave )-San Jose St	Wednesday	100.0%	0.0%		
		Thursday	100.0%	0.0%		

\* Occupancies over 85% are highlighted.  
\*\* Cells that are blank represent absent data.

# Rapid Parking Report

## City of San Leandro



Parking Area: San Leandro

Collection Range:  
3/3/21, 3/4/21, 3/6/21  
3/10/21, 3/11/21, and 3/13/21

Location	Street	Day of the Week	0-4 Hours %	4-9 Hours %	>9 Hours %	
Joaquin Ave	Bancroft Ave-(Joaquin A	Saturday	100.0%	0.0%		
	San Jose St-(Joaquin Ave )- Bancroft Ave	Wednesday	50.0%	25.0%	25.0%	
		Thursday	63.6%	9.1%	27.3%	
		Saturday	28.6%	14.3%	57.1%	
	San Jose St-(Joaquin Ave )-San Rafael St	Wednesday	10.0%	36.7%	53.3%	
		Thursday	11.5%	15.4%	73.1%	
		Saturday	24.1%	20.7%	55.2%	
	San Rafael St-(Joaquin Ave )- San Jose St	Wednesday	46.2%	19.2%	34.6%	
		Thursday	43.3%	36.7%	20.0%	
		Saturday	36.0%	28.0%	36.0%	
	Santa Maria St-(Joaquin Ave )-Bancroft Ave	Wednesday	36.8%	28.9%	34.2%	
		Thursday	35.7%	31.0%	33.3%	
		Saturday	40.5%	32.4%	27.0%	
	Juana Ave	Bancroft Ave-(Juana Ave )- Santa Maria St	Wednesday	58.8%	26.5%	14.7%
			Thursday	69.2%	17.9%	12.8%
Saturday			56.1%	17.1%	26.8%	
Bancroft Ave-(Juana Ave )-San Jose St		Wednesday	37.5%	18.8%	43.8%	
		Thursday	31.3%	21.9%	46.9%	
		Saturday	37.8%	27.0%	35.1%	
San Jose St-(Juana Ave )- Bancroft Ave		Wednesday	35.7%	25.0%	39.3%	
		Thursday	43.8%	28.1%	28.1%	
		Saturday	37.1%	20.0%	42.9%	

\* Occupancies over 85% are highlighted.  
\*\* Cells that are blank represent absent data.

# Rapid Parking Report

## City of San Leandro



Parking Area: San Leandro

Collection Range:  
3/3/21, 3/4/21, 3/6/21  
3/10/21, 3/11/21, and 3/13/21

Location	Street	Day of the Week	0-4 Hours %	4-9 Hours %	>9 Hours %
Juana Ave	Santa Maria St-(Juana Ave )-Bancroft Ave	Wednesday	51.6%	32.3%	16.1%
		Thursday	45.2%	22.6%	32.3%
		Saturday	29.4%	41.2%	29.4%
San Jose St	Bridge Rd-(San Jose St )- Estudillo Ave	Wednesday	35.7%	14.3%	50.0%
		Thursday	33.3%	40.0%	26.7%
		Saturday	16.7%	33.3%	50.0%
	Estudillo Ave-(San Jose St )- Bridge Rd	Wednesday	0.0%	100.0%	
		Thursday	100.0%	0.0%	0.0%
		Saturday	33.3%	66.7%	0.0%
	Estudillo Ave-(San Jose St )-Joaquin Ave	Wednesday	50.0%	8.3%	41.7%
		Thursday	38.5%	15.4%	46.2%
		Saturday	28.6%	28.6%	42.9%
	Joaquin Ave-(San Jose St )- Estudillo Ave	Wednesday	33.3%	16.7%	50.0%
		Thursday	46.7%	26.7%	26.7%
		Saturday	31.3%	18.8%	50.0%
	Joaquin Ave-(San Jose St )-Juana Ave	Wednesday	21.4%	21.4%	57.1%
		Thursday	38.5%	15.4%	46.2%
		Saturday	37.5%	18.8%	43.8%
	Juana Ave-(San Jose St )- Joaquin Ave	Wednesday	42.9%	0.0%	57.1%
		Thursday	25.0%	12.5%	62.5%
		Saturday	20.0%	0.0%	80.0%

\* Occupancies over 85% are highlighted.  
\*\* Cells that are blank represent absent data.

# Rapid Parking Report

## City of San Leandro



Parking Area: San Leandro

Collection Range:  
3/3/21, 3/4/21, 3/6/21  
3/10/21, 3/11/21, and 3/13/21

Location	Street	Day of the Week	0-4 Hours %	4-9 Hours %	>9 Hours %
San Rafael St	Bridge Rd-(San Rafael St )-Estudillo Ave	Wednesday	37.5%	37.5%	25.0%
		Thursday	45.5%	0.0%	54.5%
		Saturday	30.0%	30.0%	40.0%
	Estudillo Ave-(San Rafael St )- Bridge Rd	Wednesday	16.7%	25.0%	58.3%
		Thursday	27.3%	18.2%	54.5%
		Saturday	14.3%	35.7%	50.0%
	Estudillo Ave-(San Rafael St )-Joaquin Ave	Wednesday	25.0%	25.0%	50.0%
		Thursday	33.3%	33.3%	33.3%
		Saturday	0.0%	60.0%	40.0%
	Joaquin Ave-(San Rafael St )- Estudillo Ave	Wednesday	0.0%	50.0%	50.0%
		Thursday	33.3%	0.0%	66.7%
		Saturday	0.0%	50.0%	50.0%
Santa Maria St	Dolores Ave-(Santa Maria St )- Juana Ave	Wednesday	13.3%	13.3%	73.3%
		Thursday	6.3%	18.8%	75.0%
		Saturday	21.1%	10.5%	68.4%
	Estudillo Ave-(Santa Maria St )-Joaquin Ave	Wednesday	71.4%	14.3%	14.3%
		Thursday	54.5%	36.4%	9.1%
		Saturday	20.0%	30.0%	50.0%
	Joaquin Ave-(Santa Maria St )- Estudillo Ave	Wednesday	56.3%	25.0%	18.8%
		Thursday	77.8%	11.1%	11.1%
		Saturday	30.0%	50.0%	20.0%

\* Occupancies over 85% are highlighted.  
\*\* Cells that are blank represent absent data.

# Rapid Parking Report

## City of San Leandro



Parking Area: San Leandro

Collection Range:  
 3/3/21, 3/4/21, 3/6/21  
 3/10/21, 3/11/21, and 3/13/21

Location	Street	Day of the Week	0-4 Hours %	4-9 Hours %	>9 Hours %
Santa Maria St	Joaquin Ave-(Santa Maria St )-Juana Ave	Wednesday	26.7%	46.7%	26.7%
		Thursday	35.7%	7.1%	57.1%
		Saturday	7.7%	15.4%	76.9%
	Juana Ave-(Santa Maria St )- Joaquin Ave	Wednesday	44.4%	55.6%	0.0%
		Thursday	64.3%	28.6%	7.1%
		Saturday	33.3%	16.7%	50.0%
	Juana Ave-(Santa Maria St )-Dolores Ave	Wednesday	25.0%	18.8%	56.3%
		Thursday	23.1%	15.4%	61.5%
		Saturday	29.4%	23.5%	47.1%

\* Occupancies over 85% are highlighted.  
 \*\* Cells that are blank represent absent data.

# Rapid Parking Report

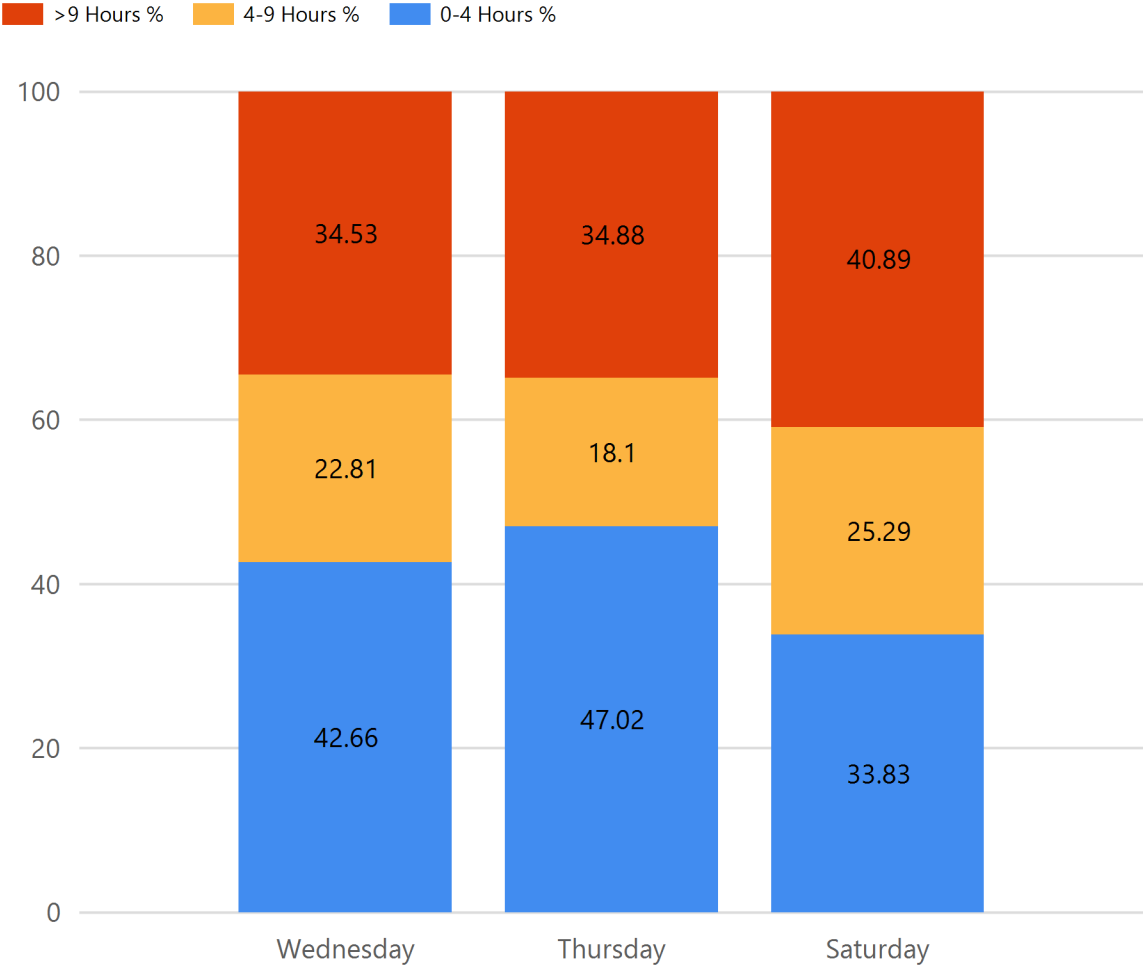
## City of San Leandro



Parking Area: San Leandro

Collection Range:  
 3/3/21, 3/4/21, 3/6/21  
 3/10/21, 3/11/21, and 3/13/21

**Chart 2.1 Turnover by Day of the Week and Block-Face**



\* Occupancies over 85% are highlighted.  
 \*\* Cells that are blank represent absent data.

# Rapid Parking Report

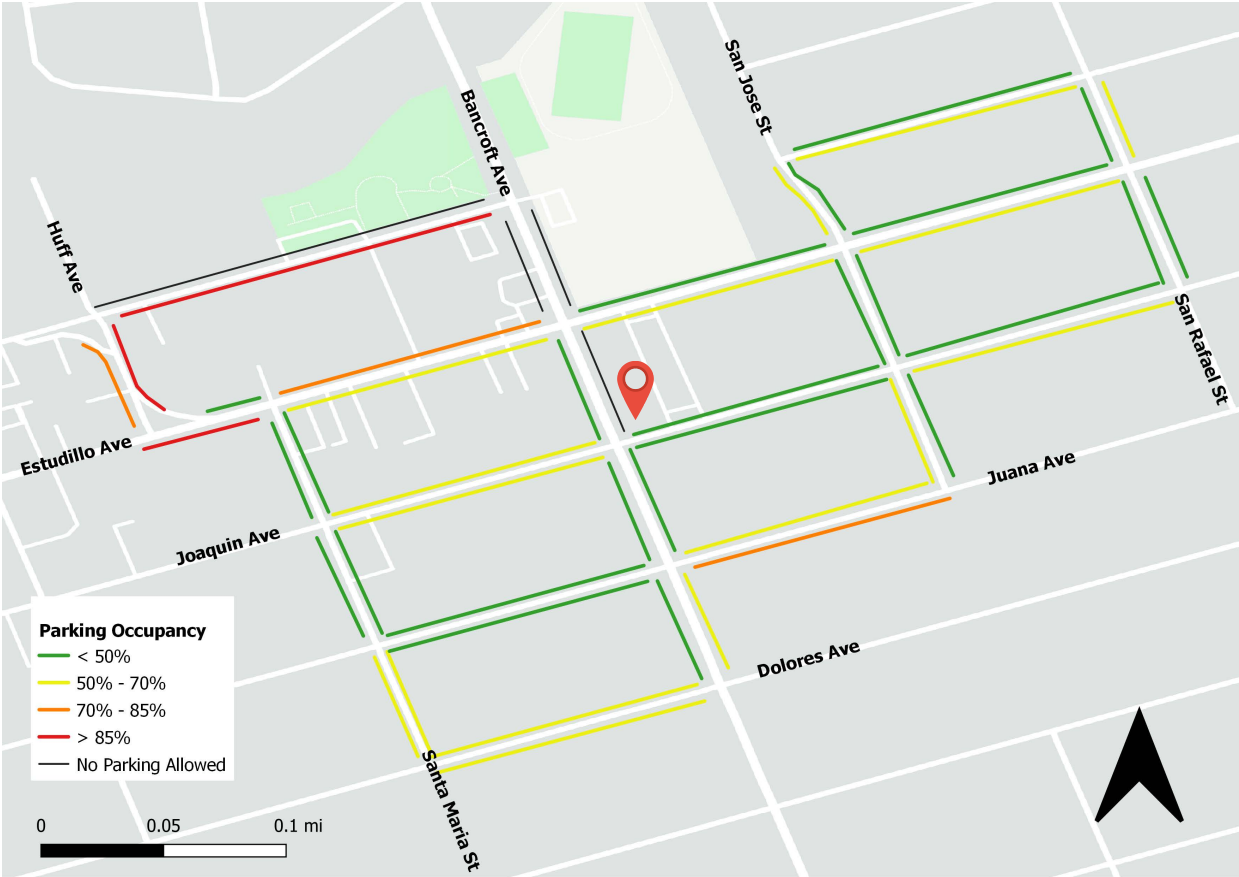
## City of San Leandro



Parking Area: San Leandro 1388 Bancroft

Collection Range:  
3/3/21, 3/4/21, 3/6/21  
3/10/21, 3/11/21, and 3/13/21

Map 1.1 Wednesday Average % Occupancy





# Rapid Parking Report

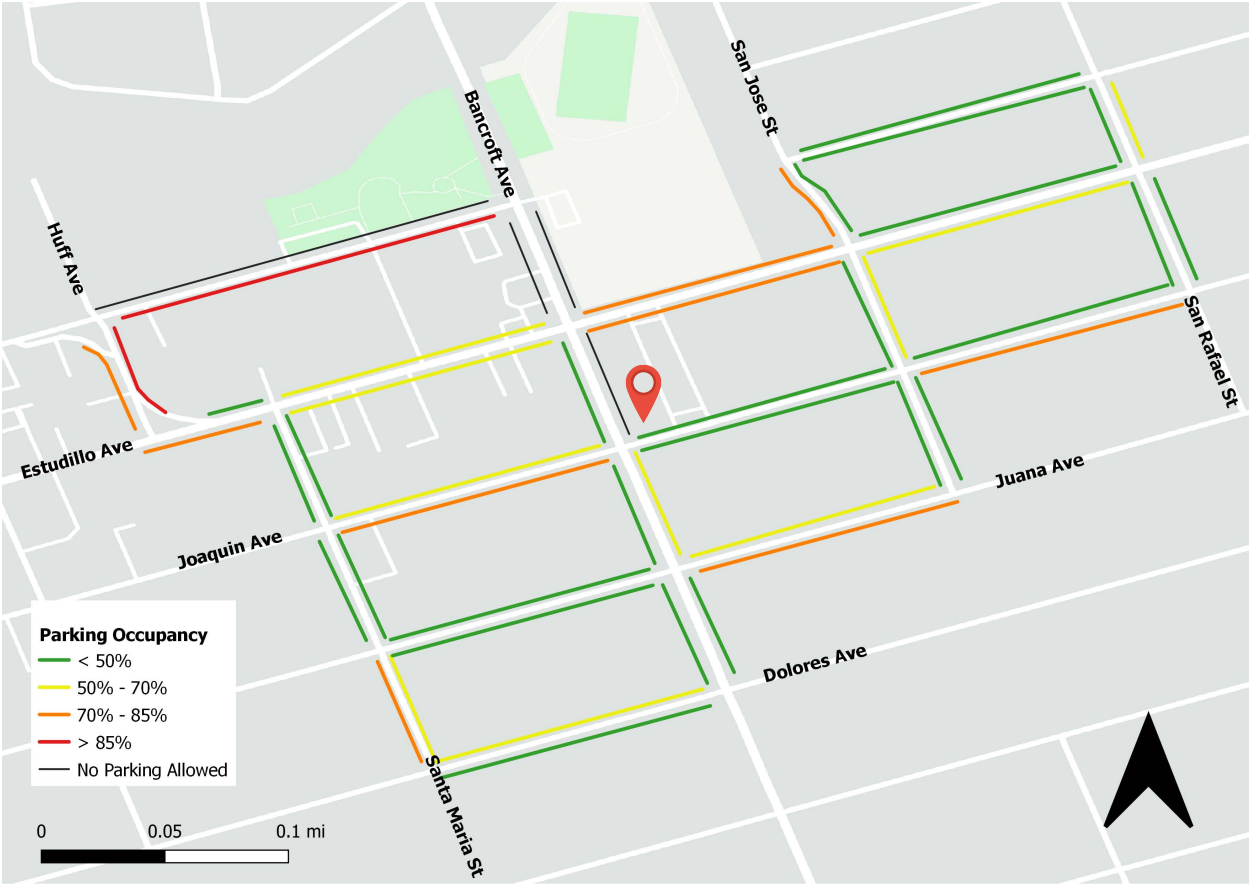
## City of San Leandro



Parking Area: San Leandro 1388 Bancroft

Collection Range:  
3/3/21, 3/4/21, 3/6/21  
3/10/21, 3/11/21, and 3/13/21

Map 1.2 Wednesday Morning Average % Occupancy



# Rapid Parking Report

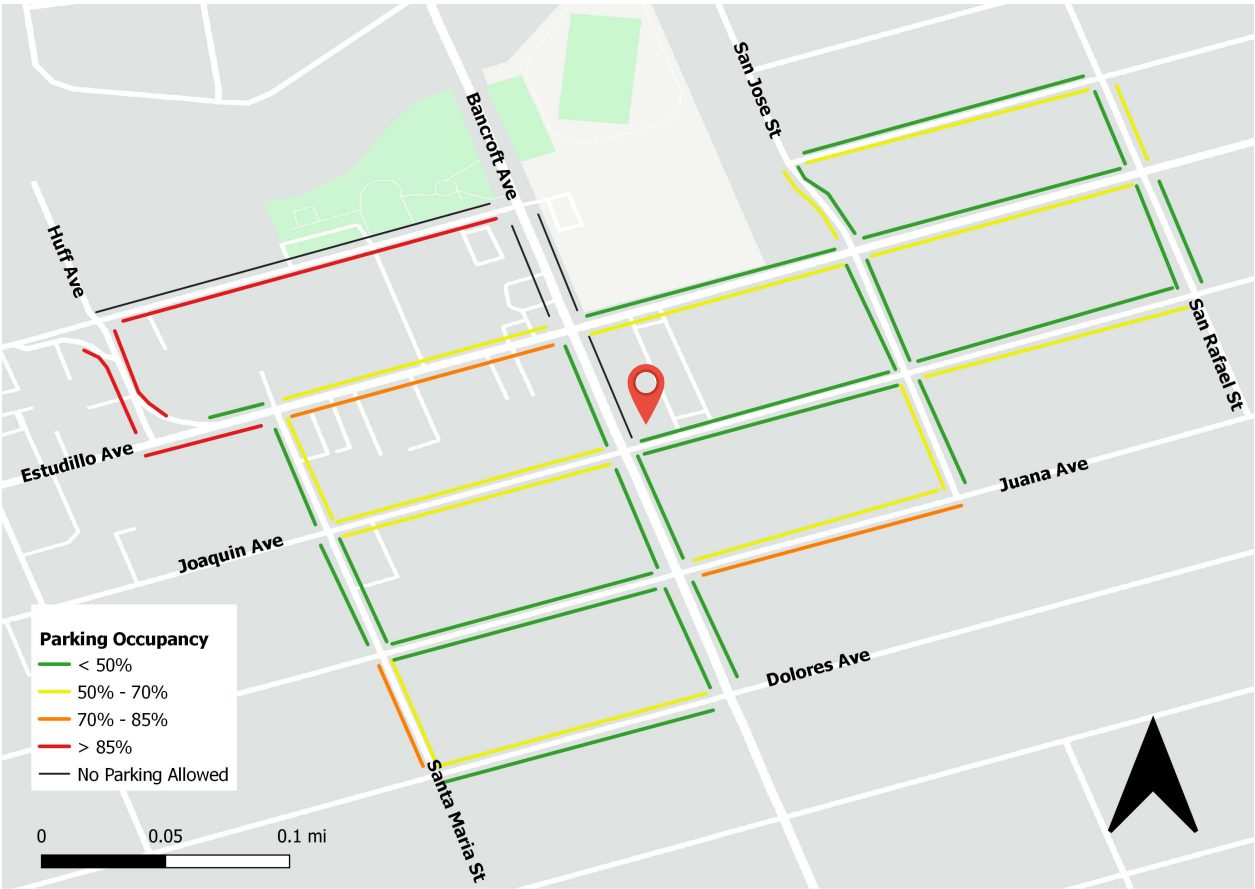
## City of San Leandro



Parking Area: San Leandro 1388 Bancroft

Collection Range:  
3/3/21, 3/4/21, 3/6/21  
3/10/21, 3/11/21, and 3/13/21

Map 1.3 Wednesday Afternoon Average % Occupancy



# Rapid Parking Report

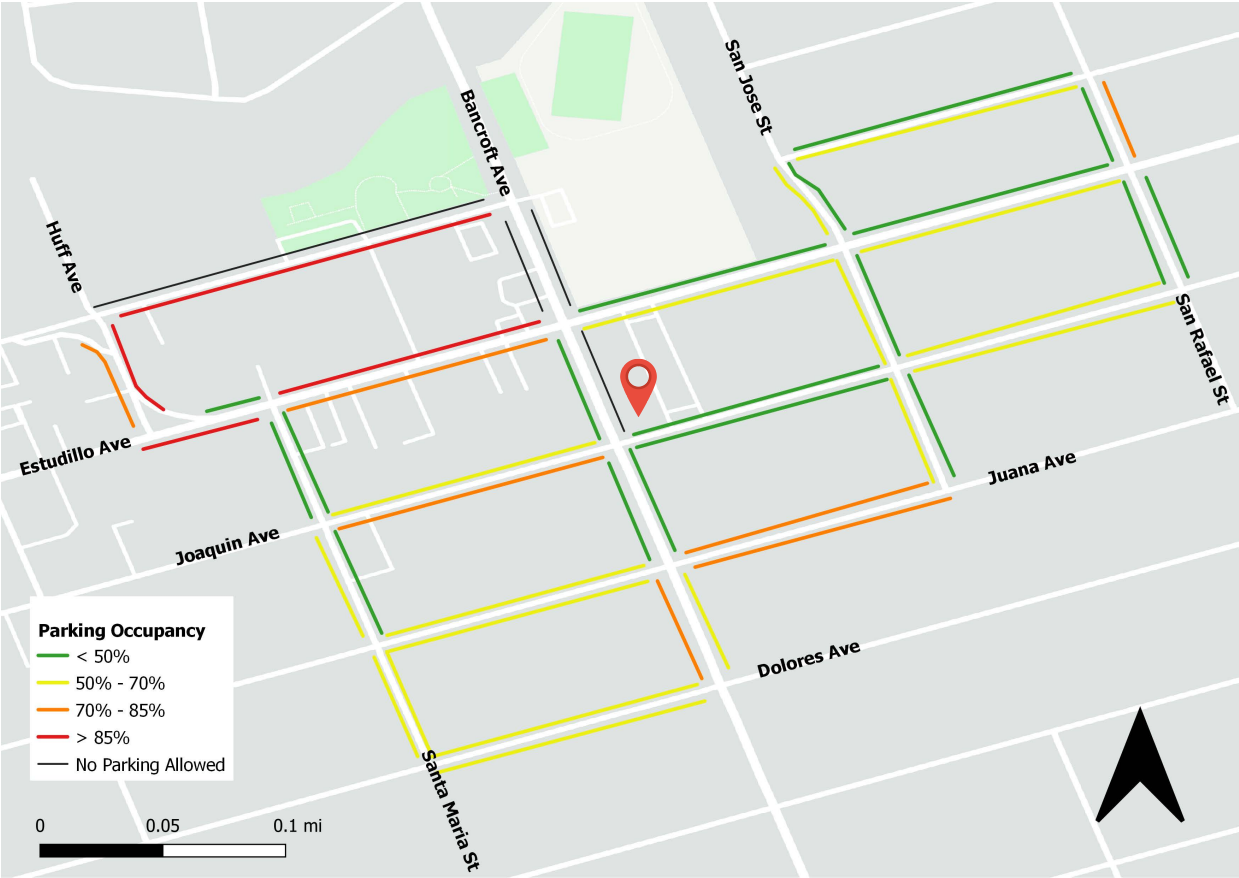
## City of San Leandro



Parking Area: San Leandro 1388 Bancroft

Collection Range:  
3/3/21, 3/4/21, 3/6/21  
3/10/21, 3/11/21, and 3/13/21

Map 1.4 Wednesday Evening Average % Occupancy



# Rapid Parking Report

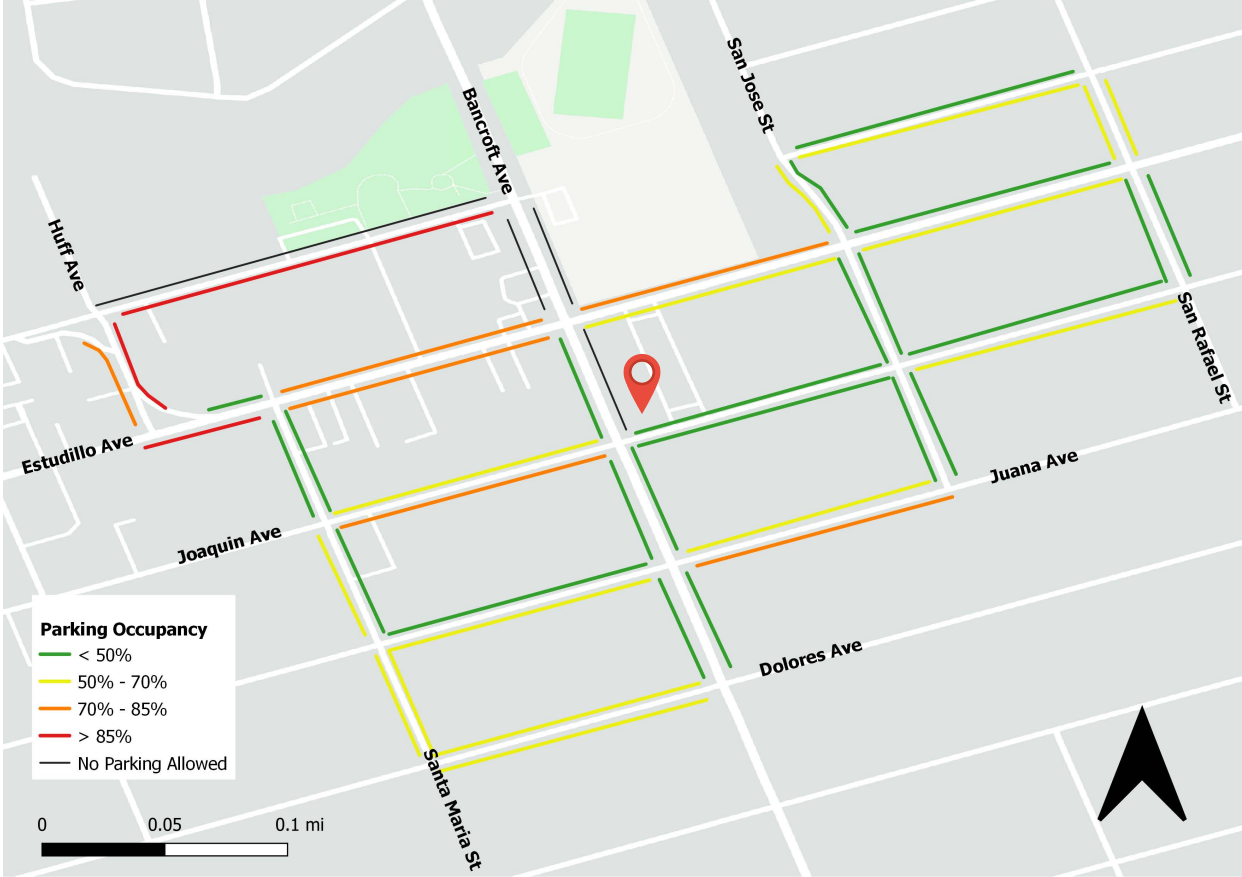
## City of San Leandro



Parking Area: San Leandro 1388 Bancroft

Collection Range:  
3/3/21, 3/4/21, 3/6/21  
3/10/21, 3/11/21, and 3/13/21

Map 2.1 Thursday Average % Occupancy



# Rapid Parking Report

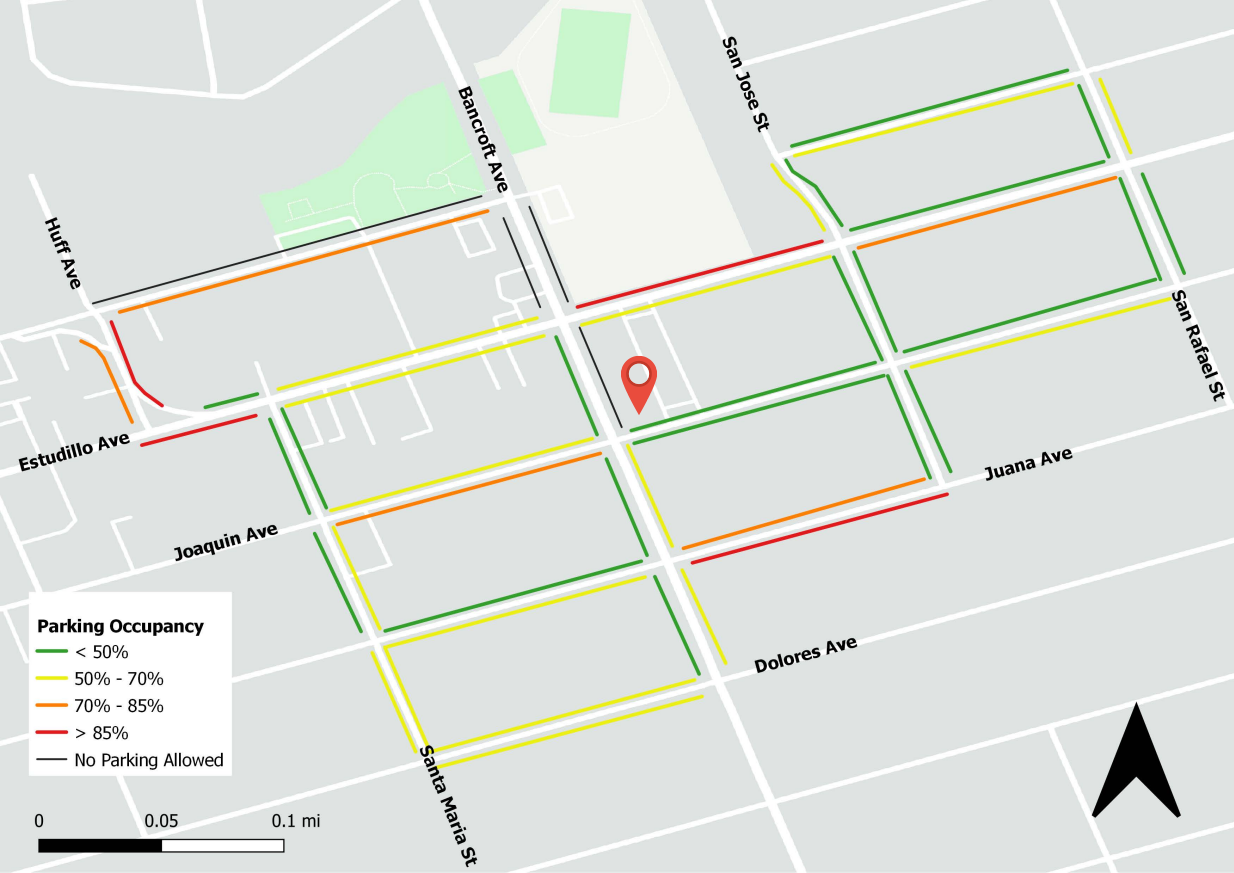
## City of San Leandro



Parking Area: San Leandro 1388 Bancroft

Collection Range:  
3/3/21, 3/4/21, 3/6/21  
3/10/21, 3/11/21, and 3/13/21

Map 2.2 Thursday Morning Average % Occupancy



# Rapid Parking Report

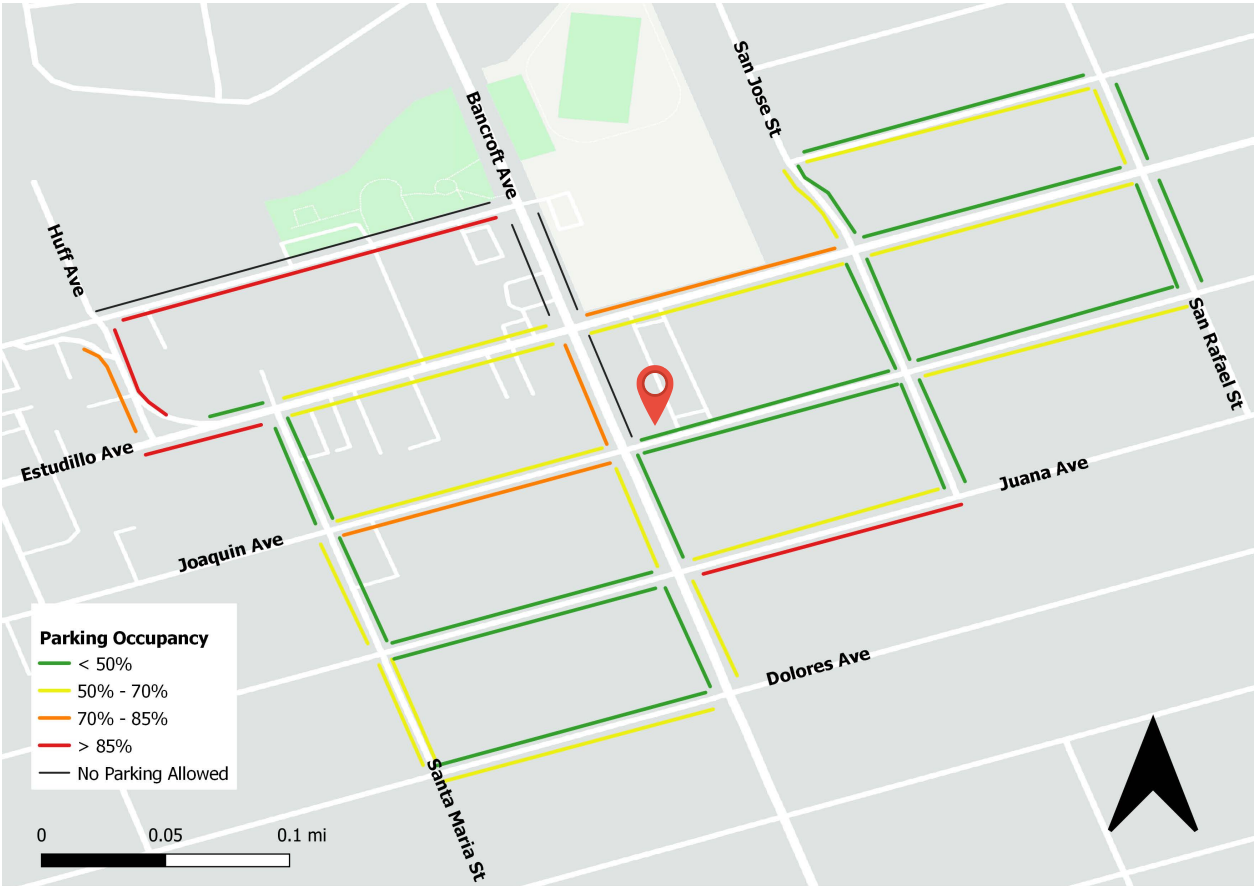
## City of San Leandro



Parking Area: San Leandro 1388 Bancroft

Collection Range:  
3/3/21, 3/4/21, 3/6/21  
3/10/21, 3/11/21, and 3/13/21

Map 2.3 Thursday Afternoon Average % Occupancy



# Rapid Parking Report

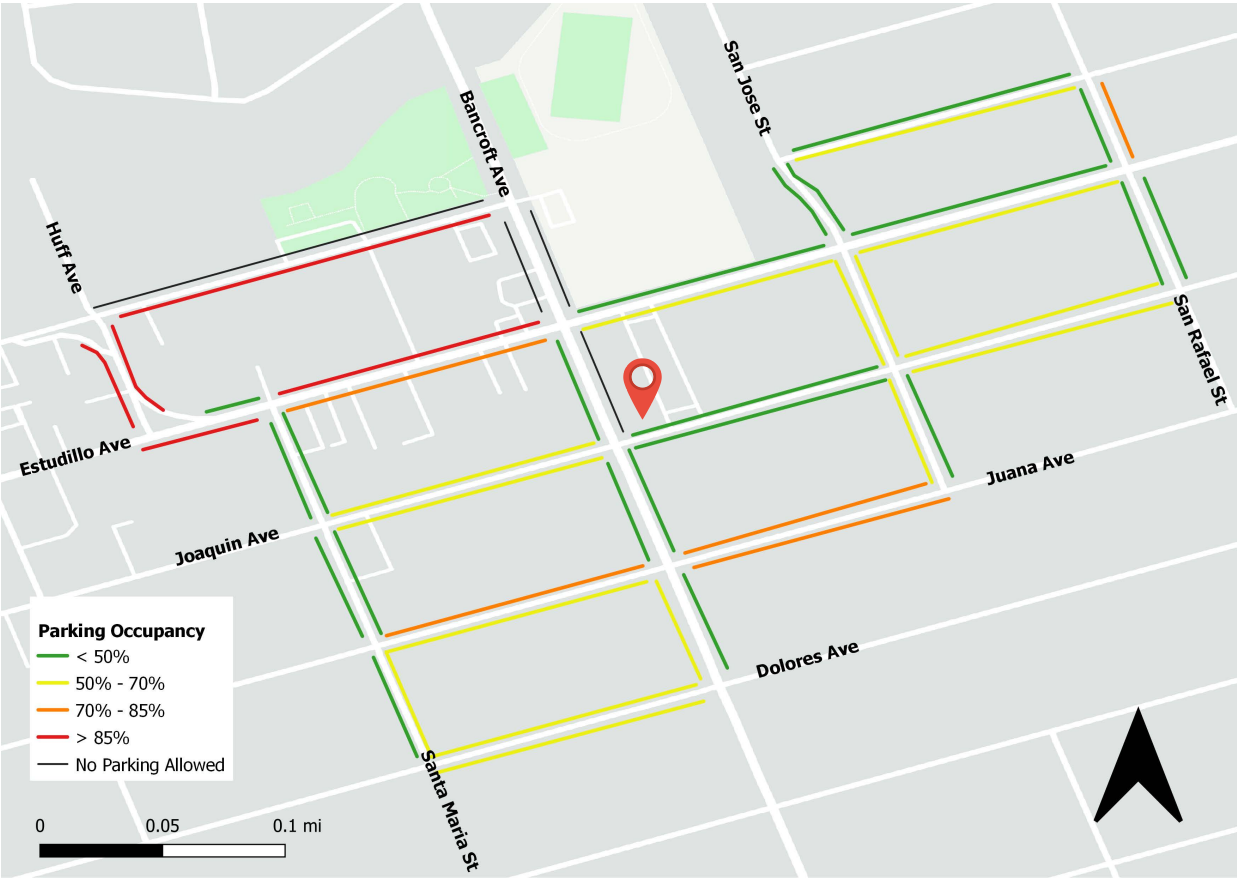
## City of San Leandro



Parking Area: San Leandro 1388 Bancroft

Collection Range:  
3/3/21, 3/4/21, 3/6/21  
3/10/21, 3/11/21, and 3/13/21

Map 2.4 Thursday Evening Average % Occupancy



# Rapid Parking Report

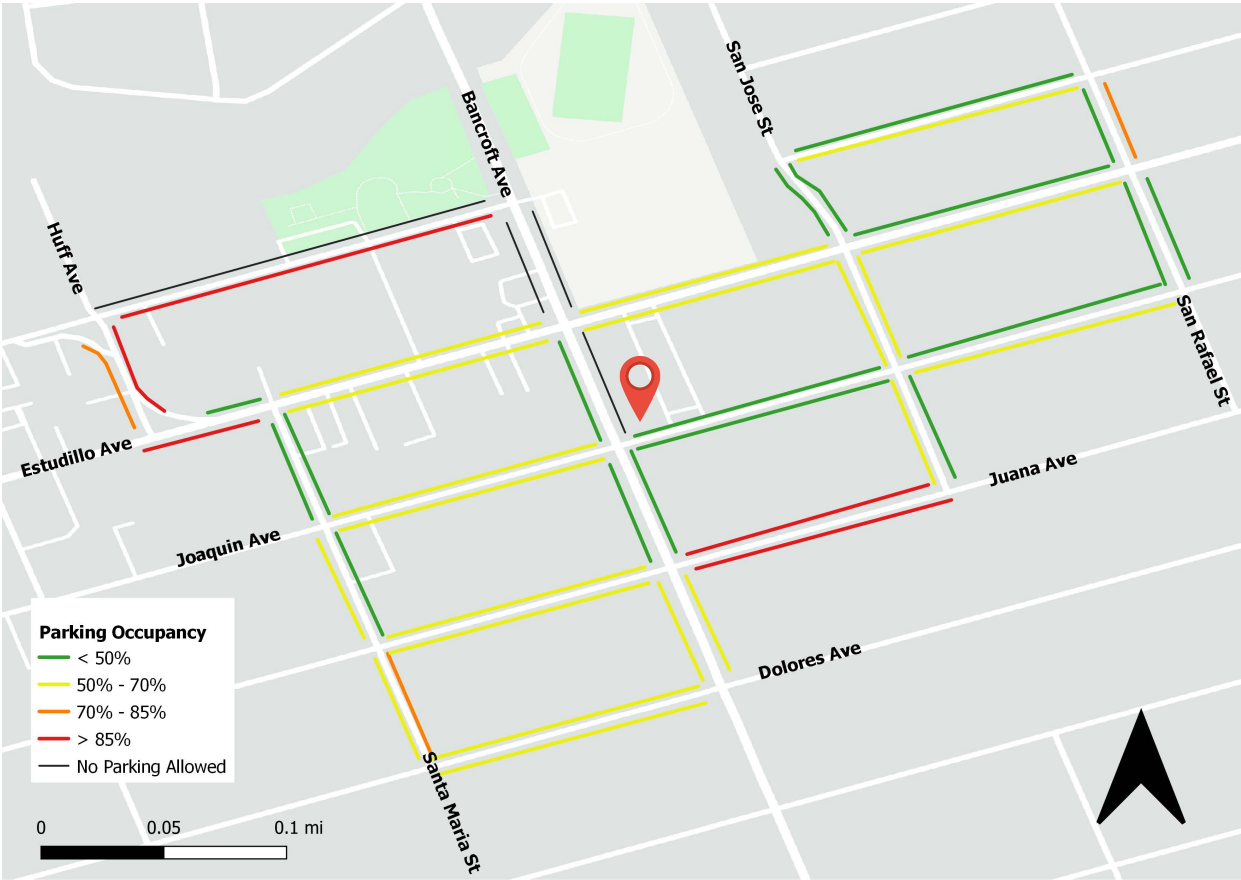
## City of San Leandro



Parking Area: San Leandro 1388 Bancroft

Collection Range:  
3/3/21, 3/4/21, 3/6/21  
3/10/21, 3/11/21, and 3/13/21

Map 3.1 Saturday Average % Occupancy





# Rapid Parking Report

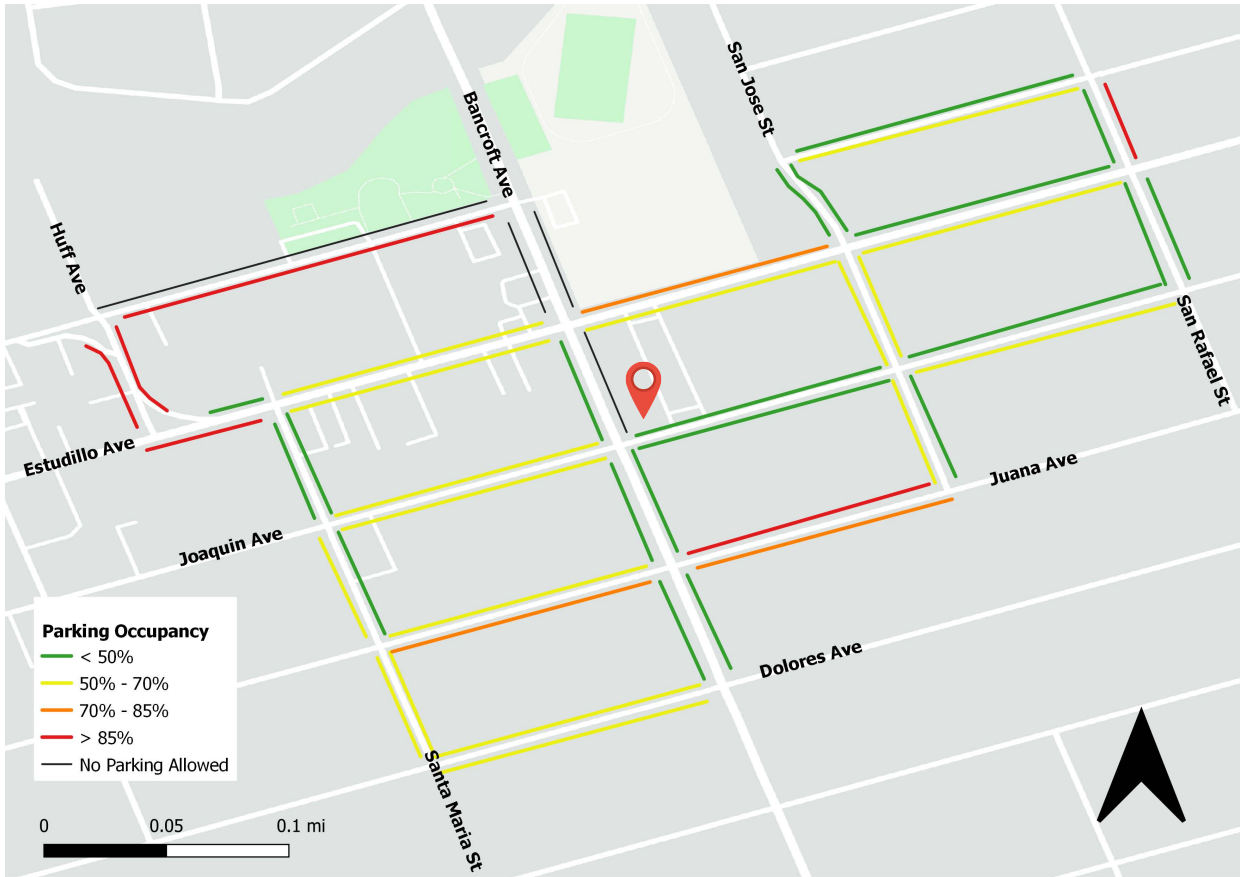
## City of San Leandro



Parking Area: San Leandro 1388 Bancroft

Collection Range:  
3/3/21, 3/4/21, 3/6/21  
3/10/21, 3/11/21, and 3/13/21

Map 3.2 Saturday Morning Average % Occupancy



# Rapid Parking Report

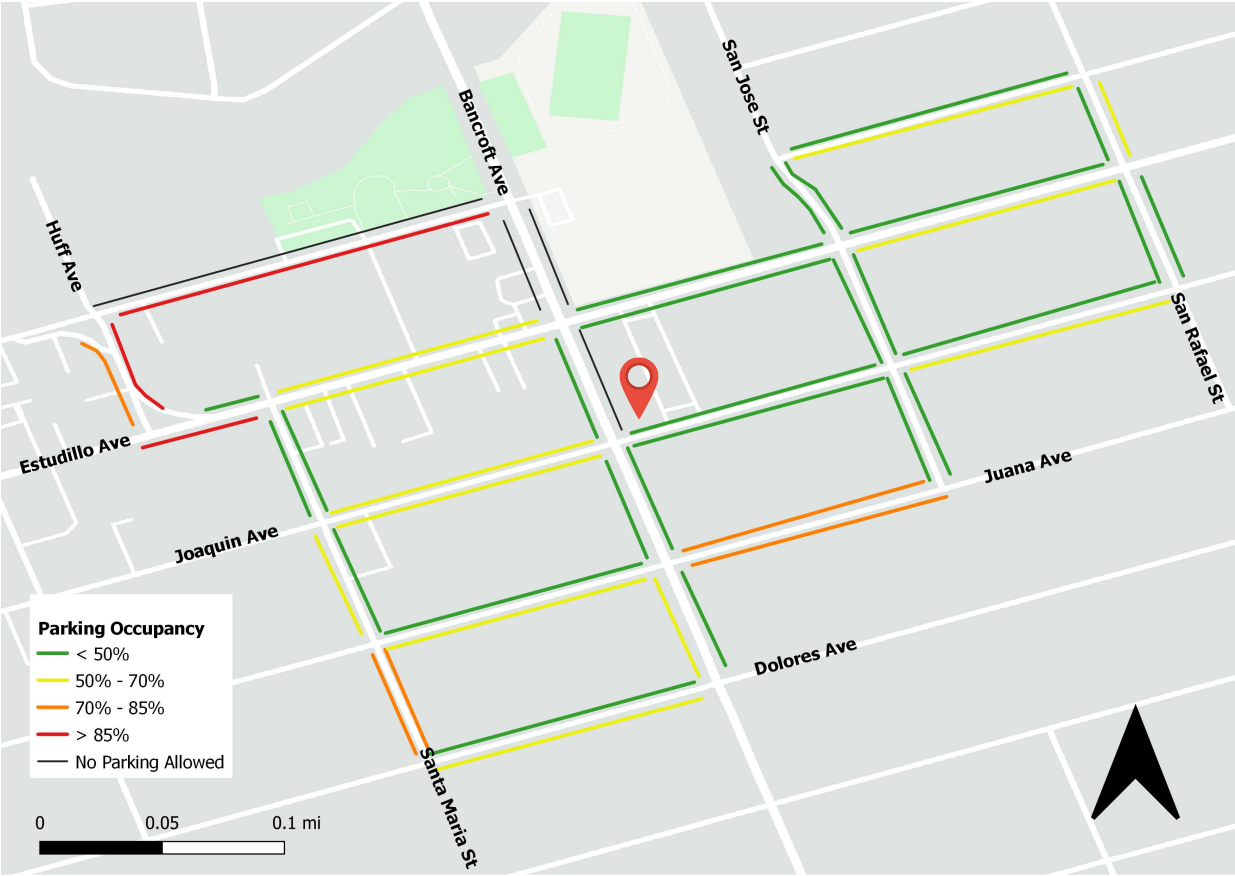
## City of San Leandro



Parking Area: San Leandro 1388 Bancroft

Collection Range:  
3/3/21, 3/4/21, 3/6/21  
3/10/21, 3/11/21, and 3/13/21

Map 3.3 Saturday Afternoon Average % Occupancy



# Rapid Parking Report

## City of San Leandro



Parking Area: San Leandro 1388 Bancroft

Collection Range:  
3/3/21, 3/4/21, 3/6/21  
3/10/21, 3/11/21, and 3/13/21

Map 3.4 Saturday Evening Average % Occupancy

