

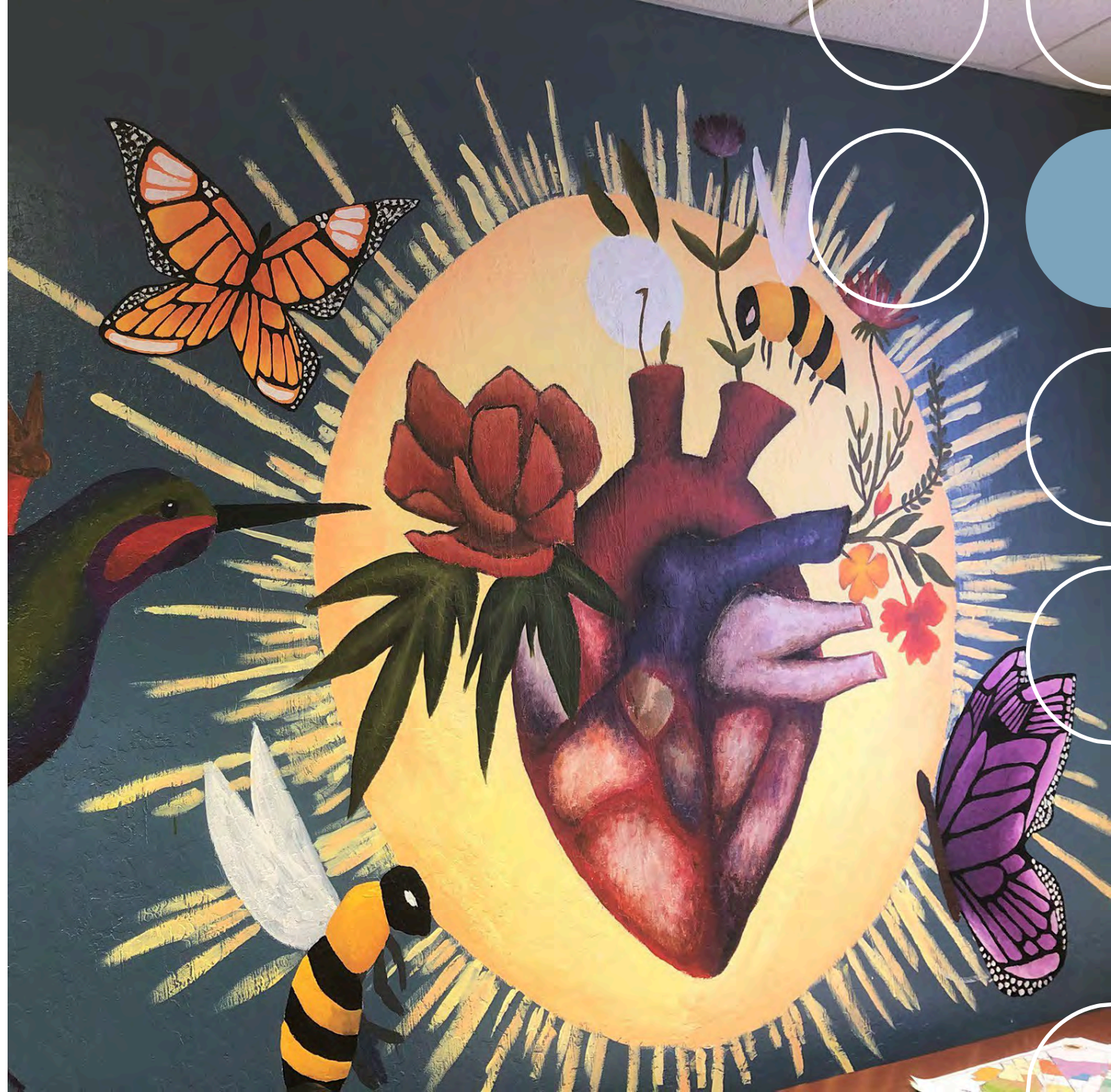
San Leandro Climate Action Plan Annual Update

June 3, 2023

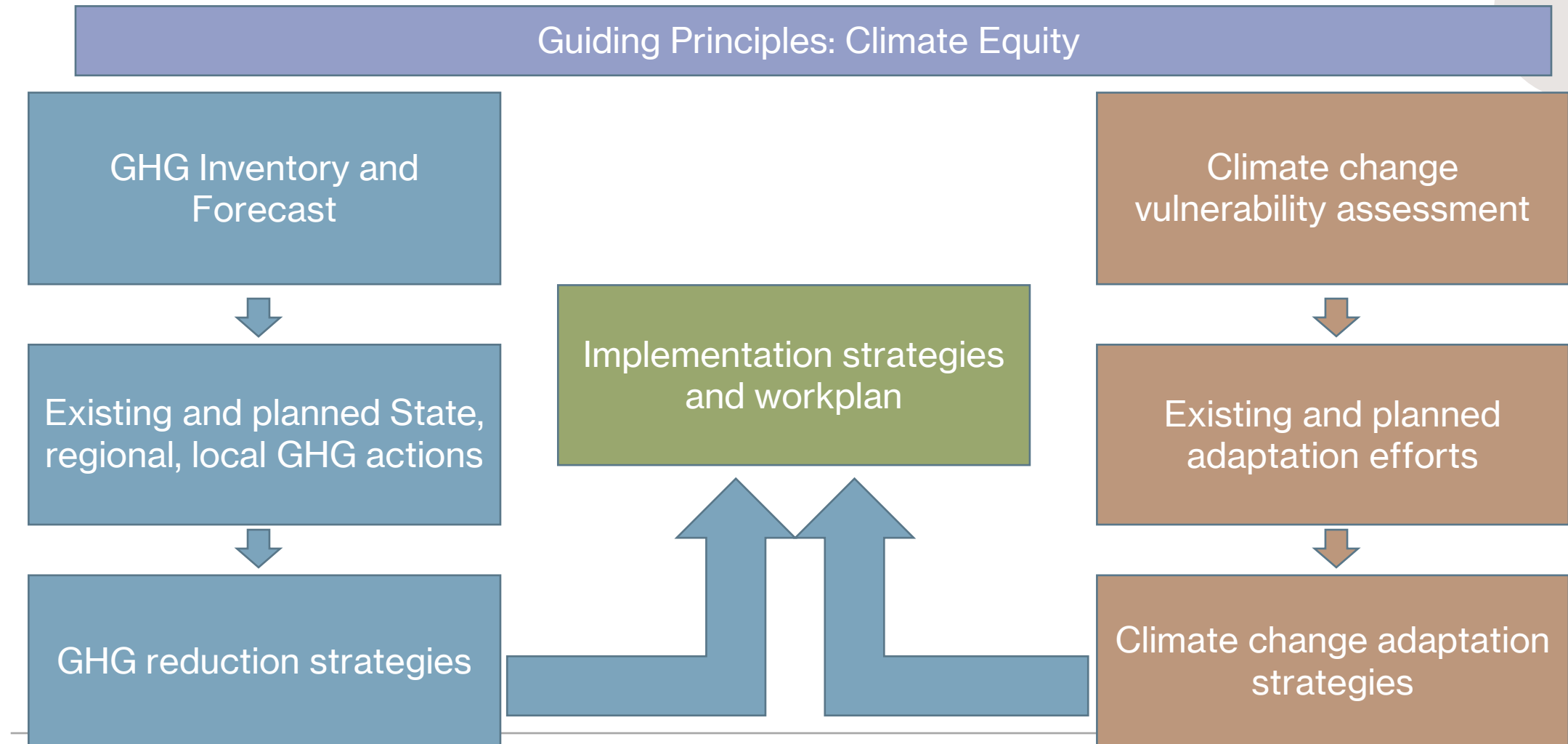


Climate Action Plan (CAP)

- Developed 2019-2021, adopted by council in July 2021
- 150+ small group + 1:1 meetings with community;
- 2 online surveys;
- 2 public workshops;
- Building off 20% GHG reduction from 2005-2017 to target 40% reduction in GHG emissions by 2030



CAP Principles and Structure





Overview of Progress

- Majority of CAP strategies now in progress
 - Prioritization based on:
 - Partnerships & projects already in progress
 - Long-term benefits
 - Funding opportunities
 - Alignment with State requirements
 - Major impacts in GHG reductions, equity, co-benefits
 - Ability to leverage cross-departmental collaborations and regional partnerships
-

Summary of Top Priorities + Work in Progress

Climate Adaptation

- Heat
- Air Quality
- Flooding
- Community resilience and preparedness

Mobility

- Bike/pedestrian infrastructure
- Transit infrastructure*
- Electric vehicle charging

Healthy Green Buildings

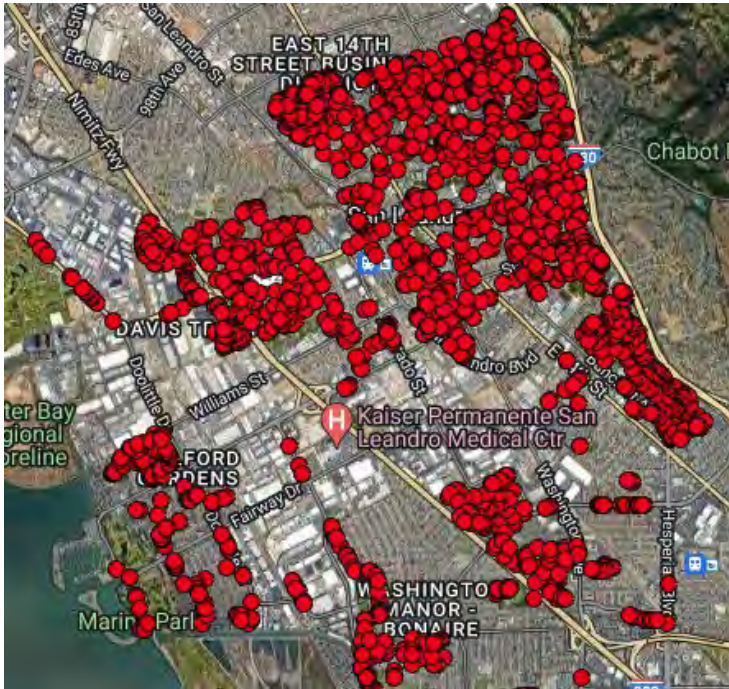
- Building electrification
- Transit-oriented development
- Renewable energy

*Transit infrastructure led regionally with AC Transit and BART with City support

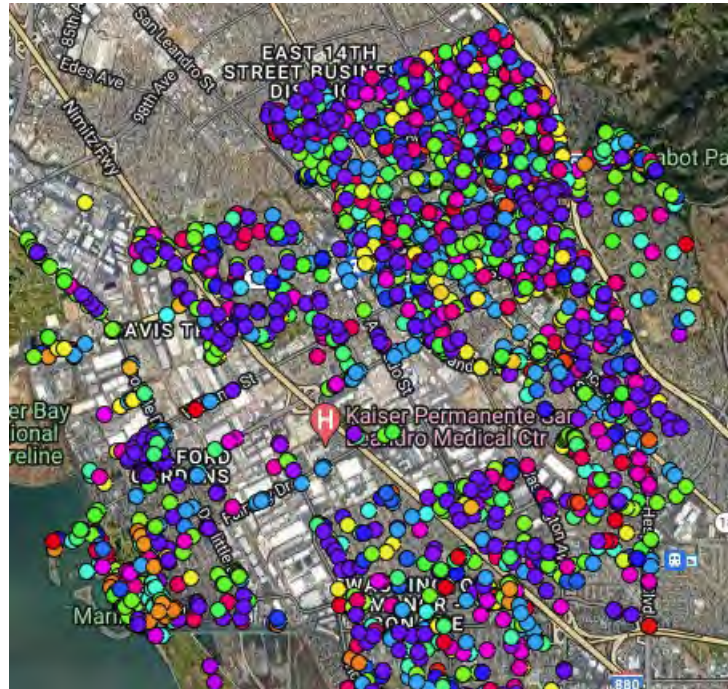
CALFire Tree Planting Grant

- Goal of 5,000 new trees planted by March 2026
- 347 trees planted to date with Common Vision
- Drought tolerant and native species
- Regional partnerships
 - San Leandro + San Lorenzo Unified School Districts
 - East Bay Regional Park District
 - Alameda County Planning Division
 - Local companies
- Prioritizing DAC/low-income census tracts, using heat vulnerability map to guide
- Collaboration with City of SL Public Works Dept.

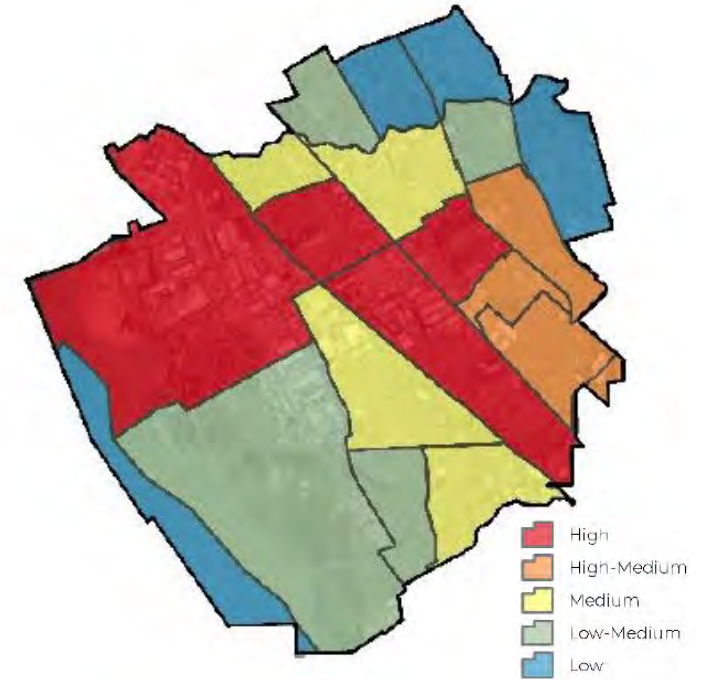




Free planting sites



Public tree inventory



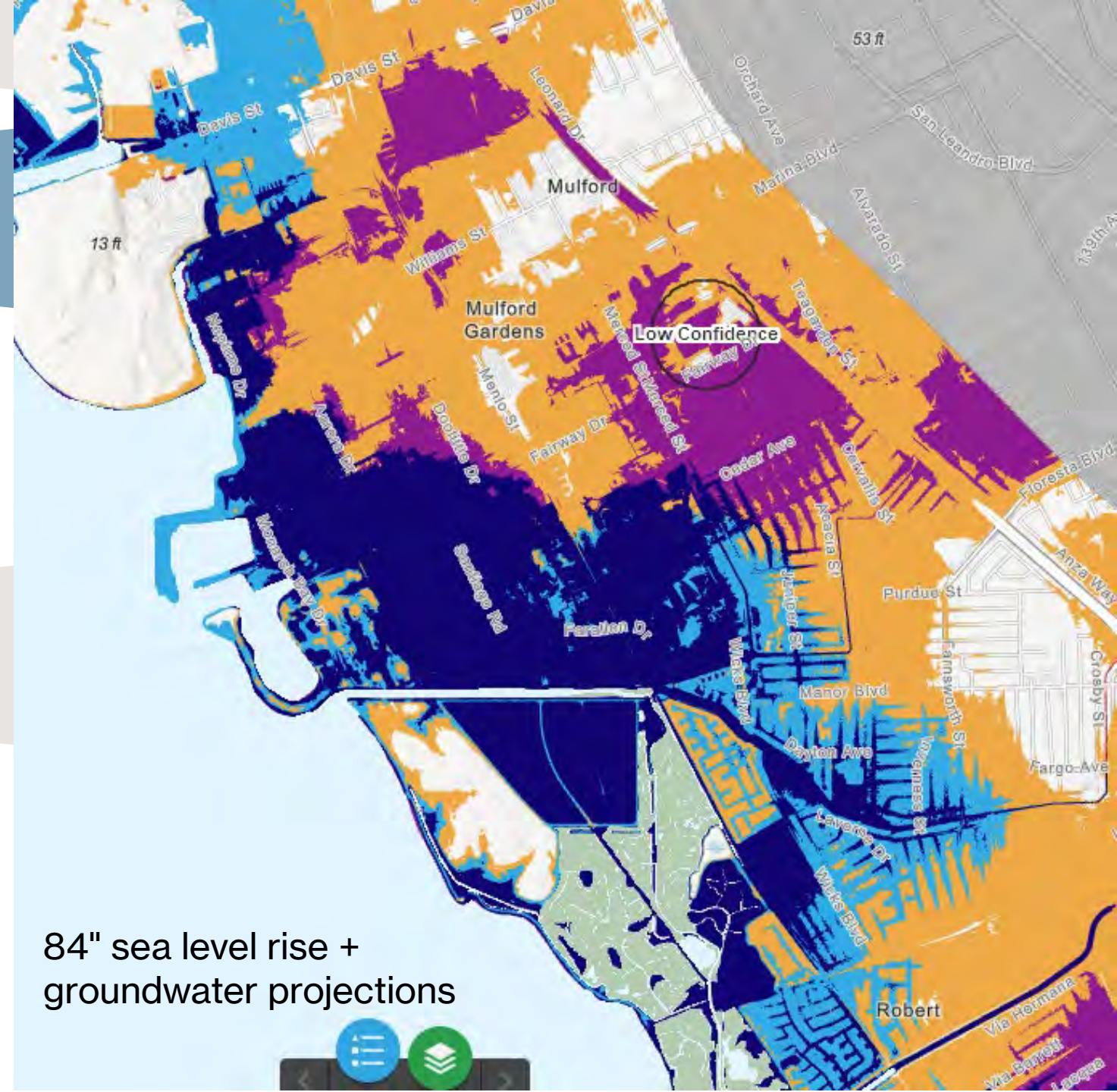
Priority planting areas

- Identified and inventoried 17,859 City-maintained trees
- Verified 8% of the City is covered by tree canopy, some areas have only 5-7% tree canopy
- Conducted stakeholder interviews and focus groups

Tree Master Plan

Sea Level Rise Adaptation Plan

- Funded by CA Resilience Challenge grant of \$161K
- Currently finalizing consultant contract
- Incorporating new groundwater data from San Francisco Estuary Institute
- Goal to identify assets + develop adaptation strategies



84" sea level rise +
groundwater projections

Resilience Hubs*

- **Hub sites**

- Church of Christ, Temple Beth Shalom, Bethel Presbyterian Church, Teen Advocacy Going Strong (TAGS), Korean Community Center of East Bay, Davis St Community Center, Faith Fellowship Church, Deaf Counseling Advocacy Referral Agency (DCARA)

- **Neighborhoods**

- Davis East Neighborhood Food Sovereignty Project, Downtown neighborhood, Washington Manor neighborhood

- Monthly capacity building workshops

- Technical assistance in project identification & funding application

- Collaboration with Emergency Management and Human Services

*Community-serving facilities augmented to support residents and coordinate resource distribution and services before, during, or after a natural hazard event.



Partnerships with East Bay Community Energy

- Transitioned residential and commercial rates to Renewable 100 (100% renewable energy)
- Community solar program with Prologis to provide 20% electricity discount to 288 disadvantaged households within 5 miles
- Designed plans for installation of 12 public EV fast chargers at Main Library, 4-5 chargers at City Hall South Lot
- Promoted EBCE programs on e-bikes, electrification incentives, induction stoves, residential solar





Other Green Team Projects

- Reach Codes
 - Virtual gift cards for Keep It Local campaign
 - Doubled participation in Alameda County Green Business Program
 - Installation of bike lanes along Grand Ave, Manor Blvd, and Fairmont
 - Reduced paper usage via electronic signature software
 - Supported implementation of SB1383 paper purchasing standards
 - Secured grant for energy efficient appliances at Mulford-Marina Library
 - Supported creation of *Library of Things*
 - Developed native pollinator garden at Manor Library
-



Challenges

- Staff capacity
 - Global high implementation funding need; particularly for adaptation
 - Lack of community readiness and social infrastructure as required for state funding
-

Goals for Next Year

- Continue planting trees via CalFire grant
- Advance Tree Master Plan and Sea Level Rise Master Plans towards 2025 implementation deadlines
- Provide seed funding to resilience hubs



San Leandro 2021 Climate Action Plan

Questions?

