



# Fairway Drive Traffic Calming



Bicycle and Pedestrian Advisory Commission April 29, 2025

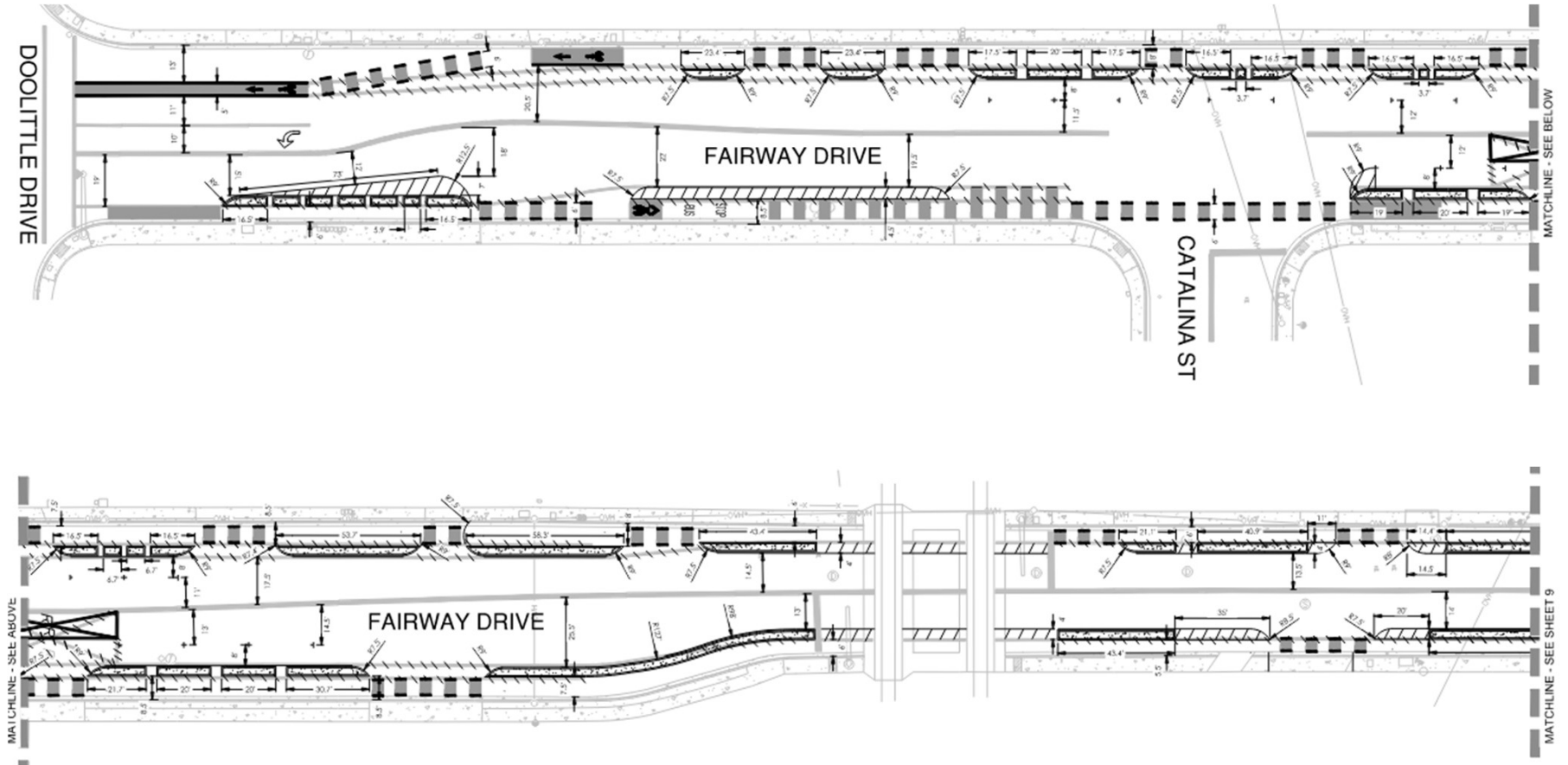
# Project Summary and Updates



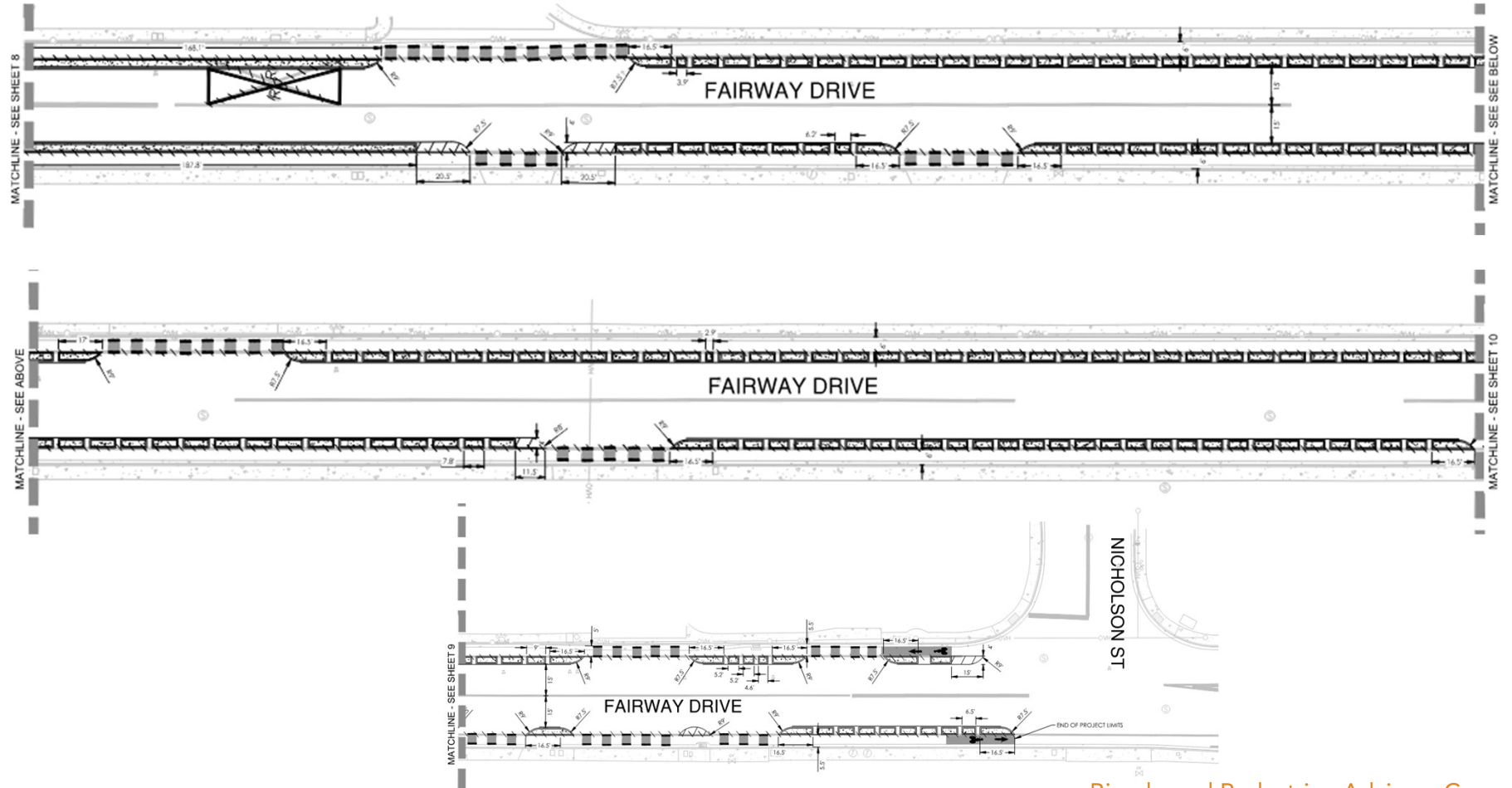
- Propose to install separated bike lanes on Fairway Dr from Doolittle Dr to Nicholson St
- Currently in 65% Design
- Project impacts to waste management district, Alameda County Industries (ACI) bin staging and pickup operations
- Project impacts to San Leandro FLEX Rides Shuttle Service stop location
- Project impact with parking removal and existing parking demands



# Design Plan



# Design Plan



# Parking Impacts



Nighttime Observation on 1/15/2025, 9:00pm

Street	From	To	Side of Street	Existing Parking Supply and Peak Demand			Estimated Parking Supply and Peak Demand with Project		Notes
				Existing Spaces	Existing Demand	Existing Occupancy	Estimated Spaces with Project	Estimated Occupancy with Project	
Fairway Dr	Catalina St	Railroad Tracks	South	8	7	88%	5	Over 85%	3 spaces removed, adjacent Catalina St has capacity for 2 vehicles to park
Fairway Dr	Doolittle Dr	Catalina St	South	5	0	0%	0	0%	
Fairway Dr	Doolittle Dr	Railroad Tracks	North	20	14	70%	6	Over 85%	14 spaces removed, adjacent Catalina St has capacity for 8 cars to park, apartments have onsite parking

- NO TO MINIMAL ANTICIPATED PARKING IMPACT
- ANTICIPATED PARKING IMPACTS (85% OR MORE)



# Next Steps

1. Review 65% design comments
2. Coordination with Union Pacific Railroad (UPRR) for grade crossing review