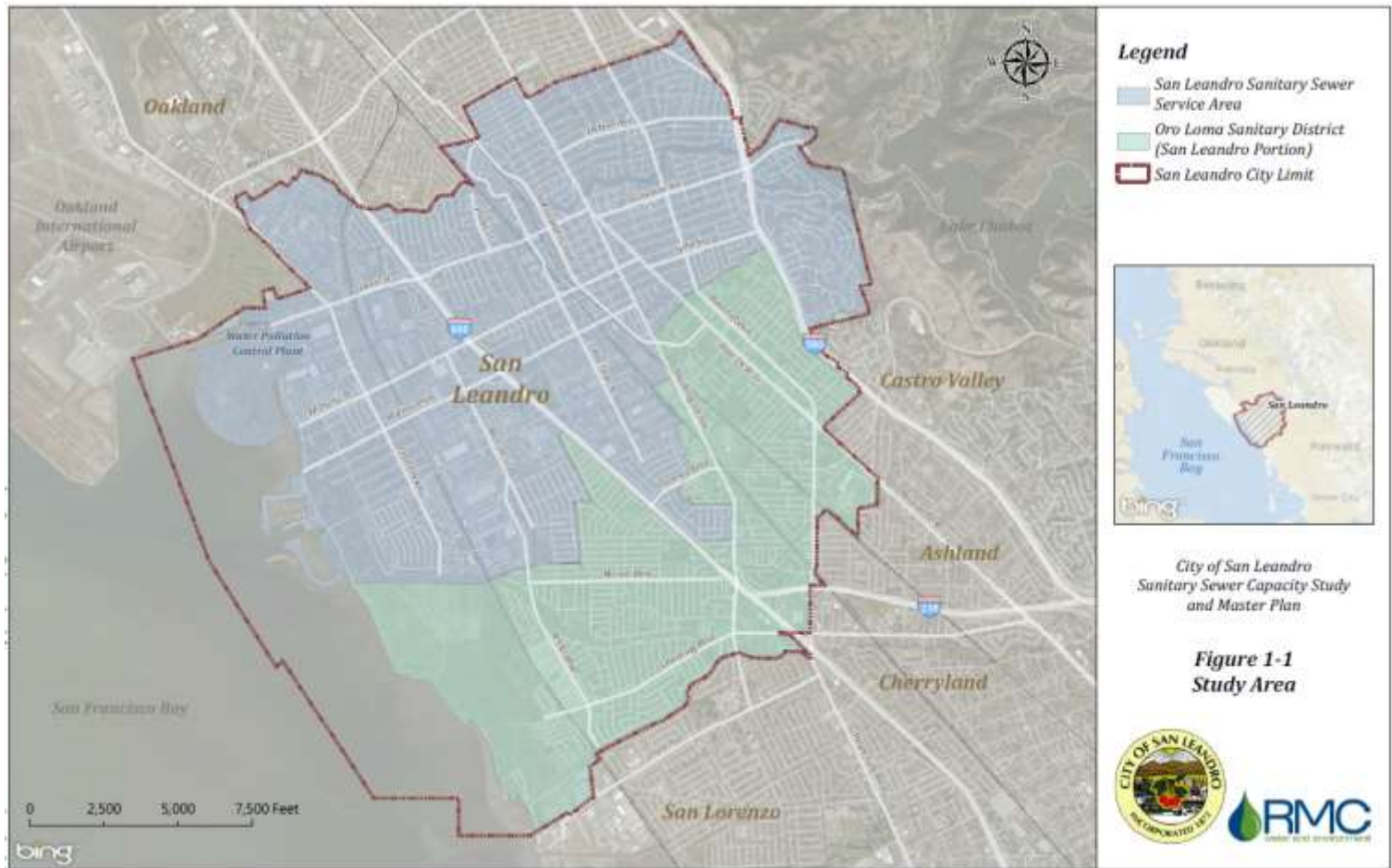




City of San Leandro

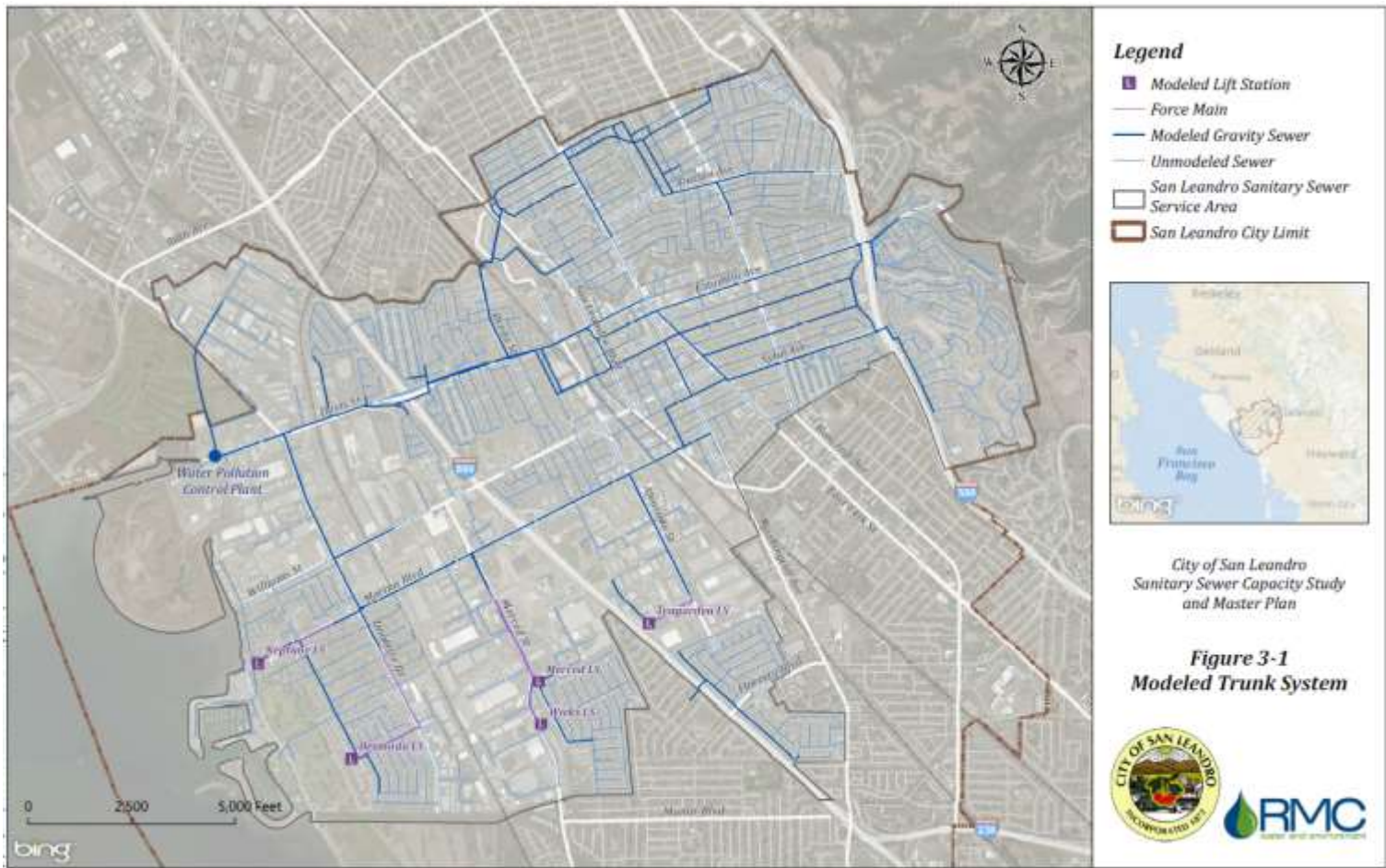
Sanitary Sewer Capacity Study and Master Plan

Facilities and Transportation Committee
April 19, 2016



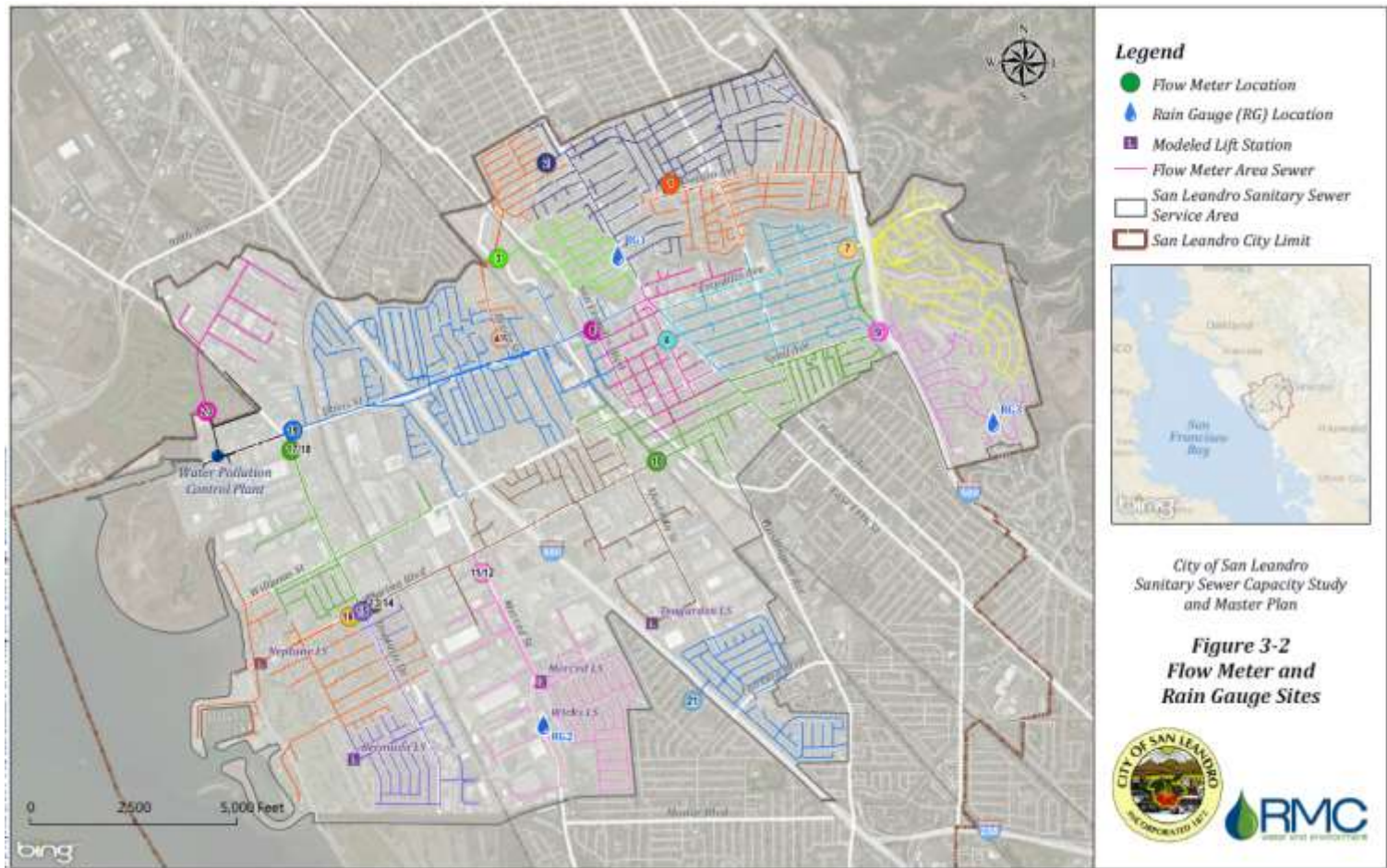
Collection System

- 125 miles of pipeline
- 13 pump stations



Modeled Trunk System

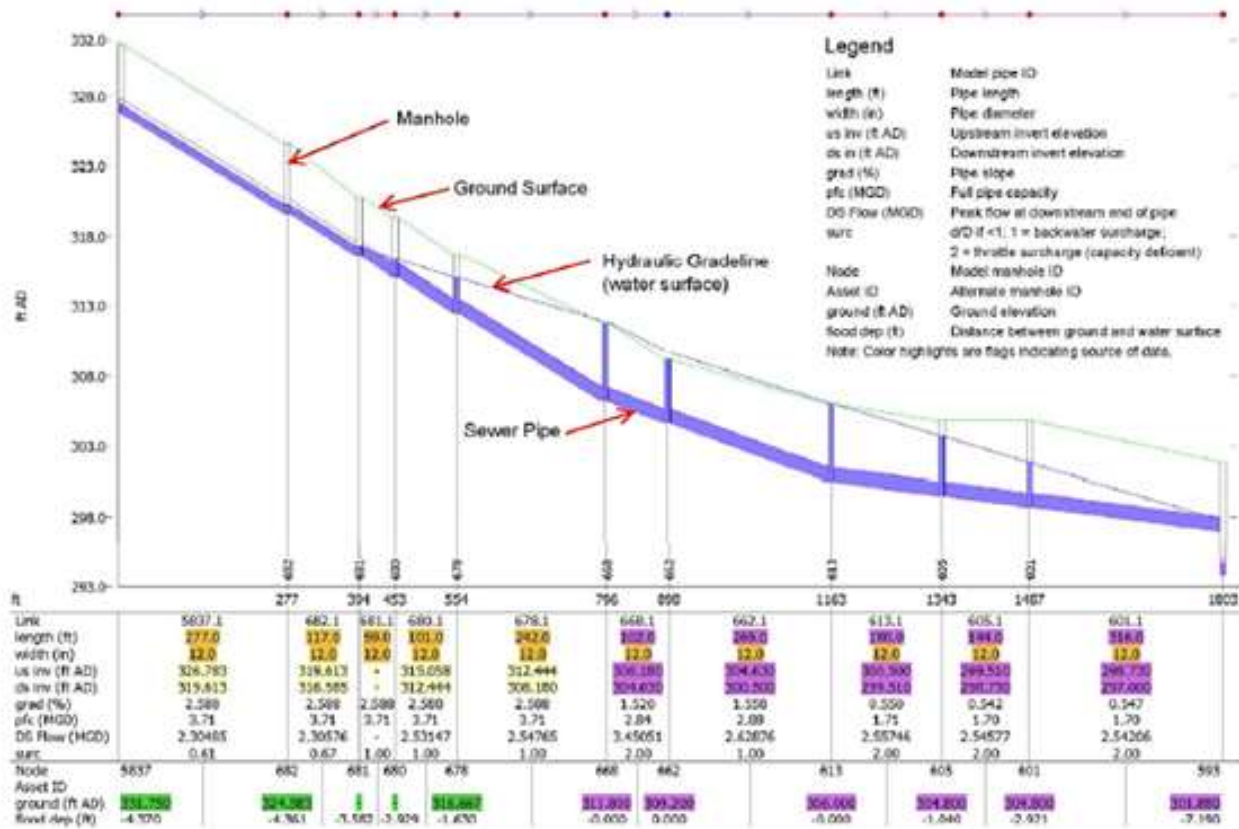
- 34 miles of trunk pipeline
- 5 major Pump stations



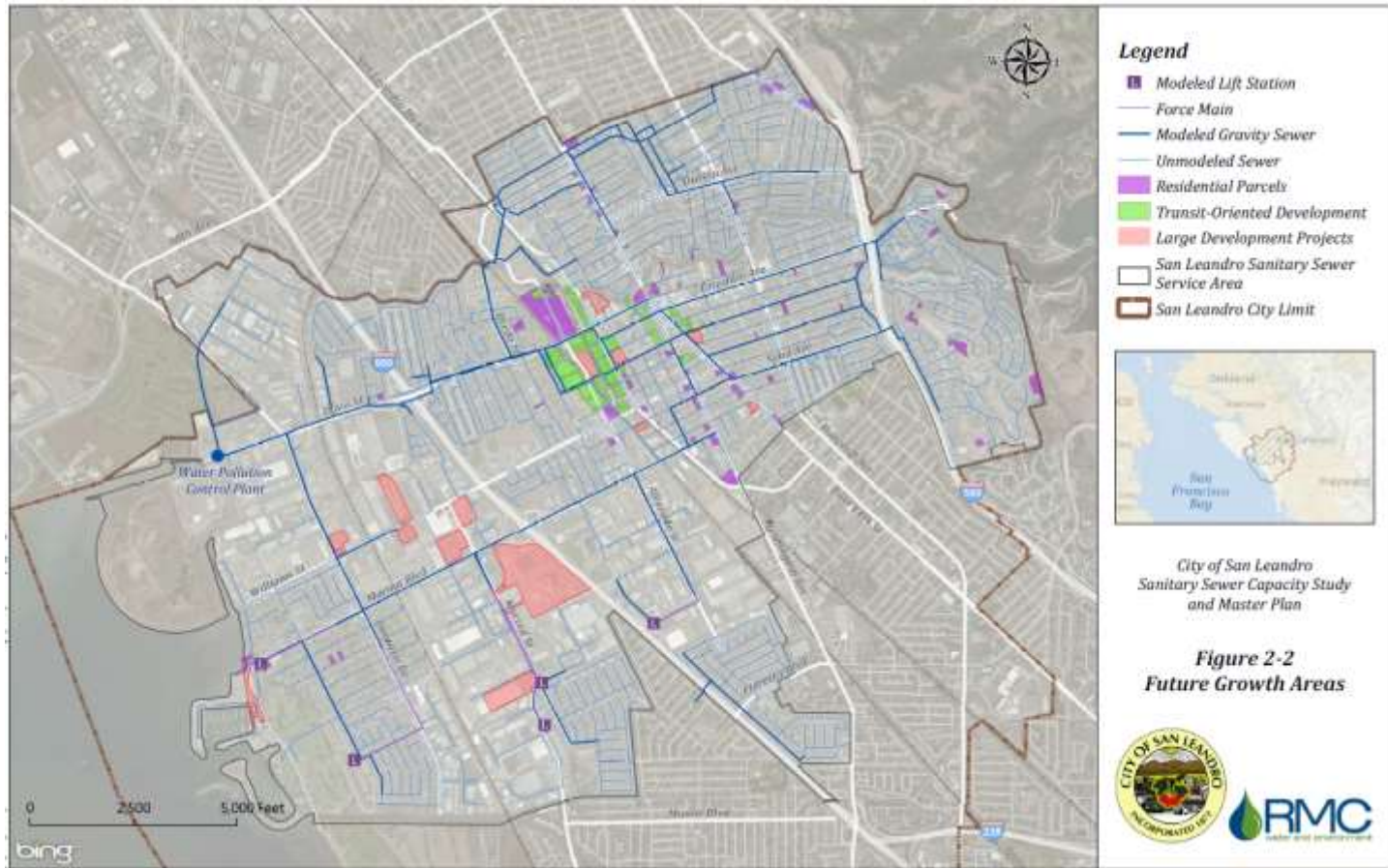
Data Gathering

- 21 flow meters and 3 rain gauges installed
- EBMUD usage records
- As-built improvement information

Profile Legend



Typical Modeled Profile



Future Growth

- Consistent with data used in preparing the 2035 General Plan

Conclusion

- Current system is not stressed
- Recommended future Capacity Improvements

Project ID	Priority	Project Name	U/S MHID	D/S MHID	Description	Estimated Capital Improvement Cost*
1	1	Sybil Avenue Diversion	109+20	100+33	Divert flow at San Jose St. from 8" north line to 12" south line via new 8" pipe connection	\$ 35,000
2	1	Dutton Avenue Lower Relief	330+09	340+05	Upsize 830 lf of 10" to 14" (HDPE) from Bancroft Ave. to Woodland Ave.	\$ 298,000
3	1	Dutton Avenue Upper Relief	333+05	300+11	Upsize 730 lf of 8" to 10" (HDPE) from Mitchell Ave. to Merle Ct.	\$ 229,000
4	2	Marina Blvd. at Cherry St. Diversion	--	New MH	Divert flow from 8" (unmodeled) sewer in Cherry St. (coming from MH 107+12, now connected to 8" north line in Marina Blvd. at MH 107+10) to new manhole on 15" south line	\$ 51,000
5	2	Benedict Drive Easement Manhole	190+01	--	Bolt shallow manhole 190+01	---
6	3	Peralta Avenue Relief	310+04	310+10	Upsize 490 lf of 8" to 10" from San Leandro Blvd. to Bixco St., with new crossing across UPRR	\$ 643,000
7	3	Beverly Avenue Relief	340+02	300+77	Replace 990 lf of 15" with 18" from Dowling Blvd. to Broadmoor Blvd.	\$ 605,000
8	4	East 14th Street Relief	300+69	300+39	Replace 250 lf of 15" with 18" from Broadmoor Blvd. to Farrelly Dr.	\$ 160,000
9	4	Farrelly Drive Relief	300+34	300+33	Replace 360 lf of 18" with 21" east of Dorchester Ave.	\$ 247,000
10	4	W. Juana Avenue Relief	210+11	200+62	Upsize 350 lf of 12" to 16" (HDPE) from Carpentier St. to San Leandro Blvd.	\$ 119,000
11	3	Teagarden Lift Station Upgrade	--	--	Retrofit existing station with new submersible pumps	\$ 679,000
Total Estimated Capital Cost:						\$ 3,066,000



City of San Leandro

Sanitary Sewer Capacity Study and Master Plan



FINAL
October 2015

Prepared by:

RMC
water and environment



Questions?