

Neptune Drive Shoreline Flood Protection Project Update

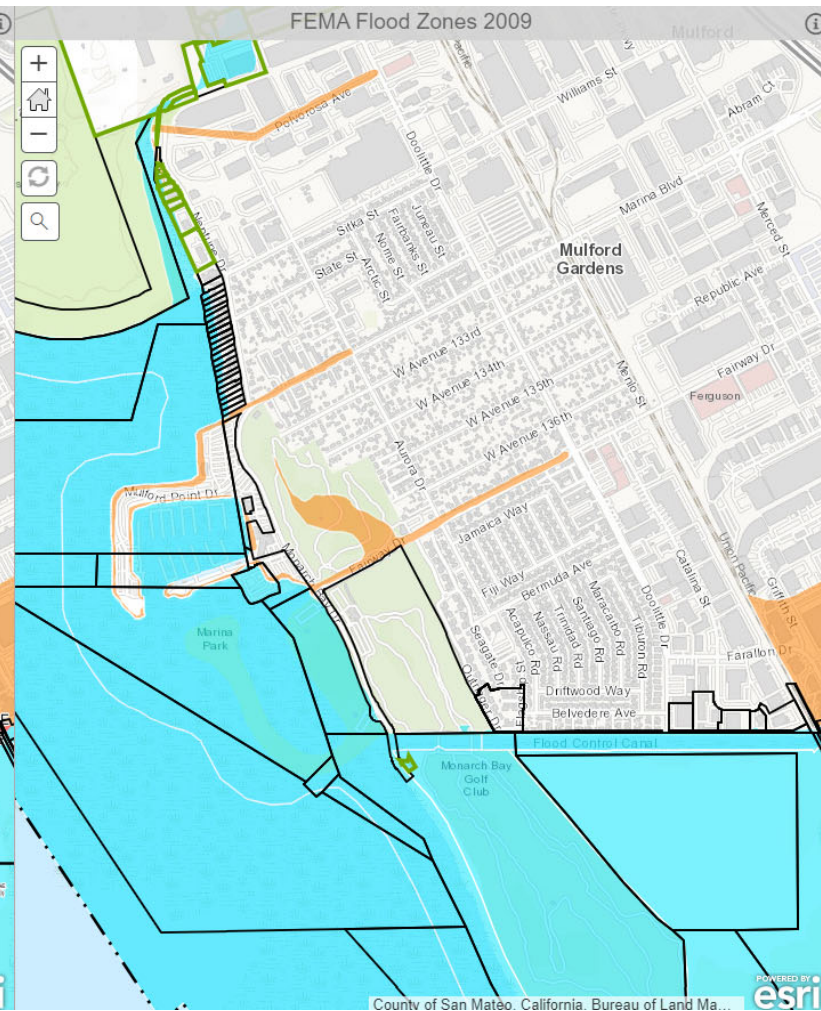
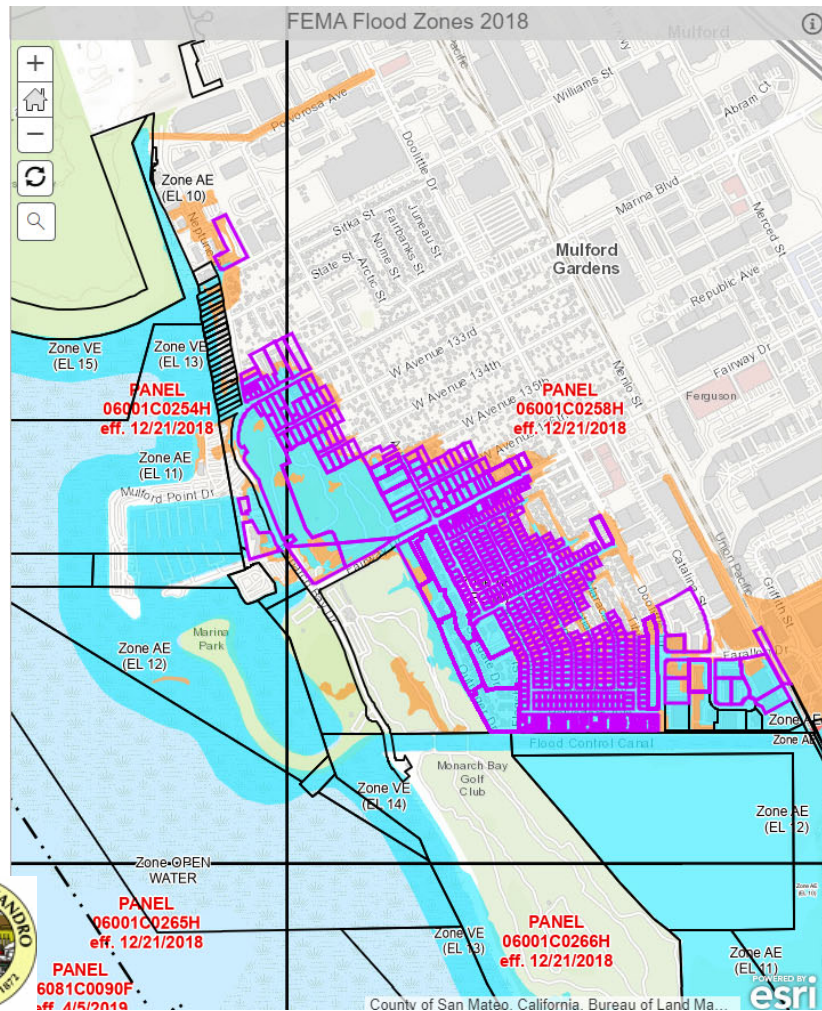
Information Only

July 3, 2024

Overview

- Project Background
- Project Design, Scope, and Funding
- Coordination with Alameda County Flood Control District (AFD) Project and challenges
- Project Status
- Next Steps – short term & long term

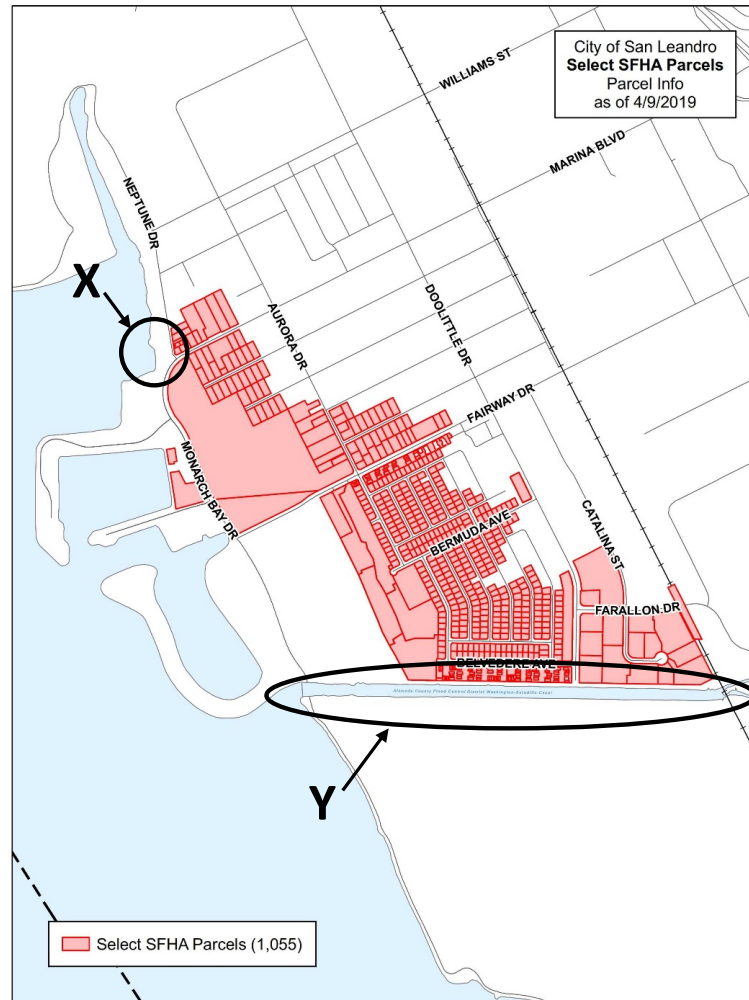




Impacted Properties and Project Locations

X – City Project, Neptune Drive

Y – ACFCF Project, Estudillo Canal



Project Location



Project Design, Westward View



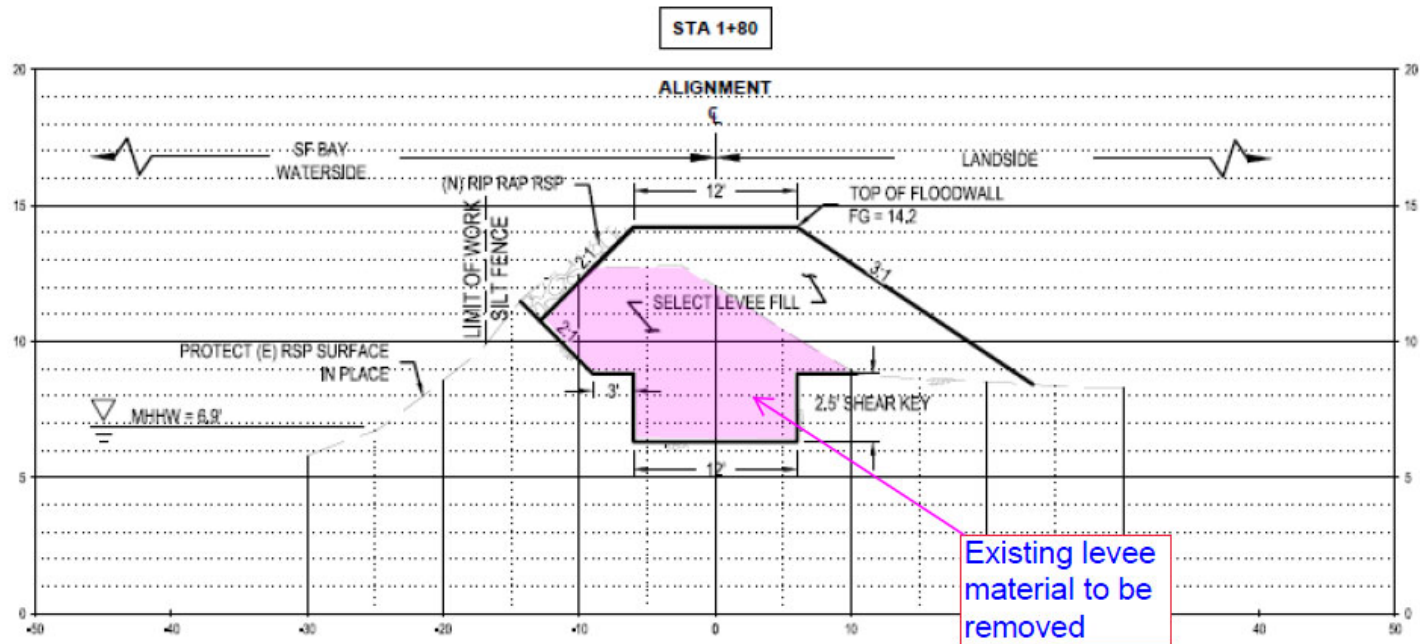
Proposed Levee Improvements - Photo Simulation



Existing Conditions



Levee Profile



1+80 TYPICAL CROSS SECTION
C2.0 VER SCALE: 1"=5'
 HOR SCALE: 1"=10'

Next Steps

Short Term:

1. Re-appropriate the previously authorized \$40K to address the Consultant's deficit and the project Account's deficit
2. Issue an Addendum to continue the consultant's agreement and to compensate their deficit
3. Request Bay Conservation & Development Commission (BCDC) to extend the construction schedule
4. Pause the consultant's design effort



Next Steps

Long Term:

5. Review the cost/benefits of the project; useful life of improvements, and duration of Assessment District loan – versus potential, regional, Sea Level Rise (SLR) measures
6. Survey the community to determine the level of interest in continuing the project.
7. Identify funding and seek additional appropriation if the project is to continue



No committee action is requested, this is for information only

Questions?

