

Steven Taylor Sanctity of Life Pavilion Artwork Selection

City Council Meeting

May 6, 2024



Plaza Diameter 23ft.

**Artwork
Location**

Art Component (by others)

Monument sign

Proposed sensory labyrinth

Proposed concrete
pedestrian path, typ.

Existing
picnic area

Existing bench

Existing outdoor stage

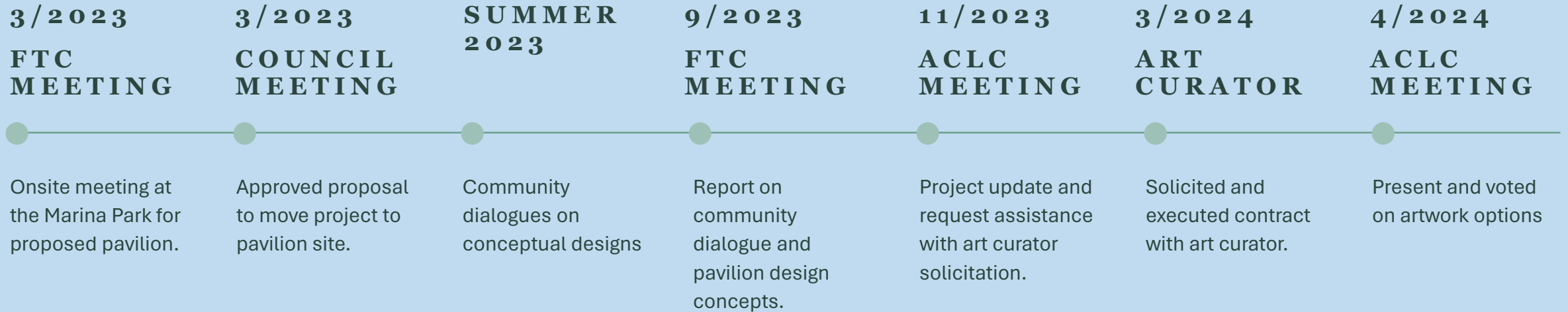
Remove existing
wood structure

Proposed seating

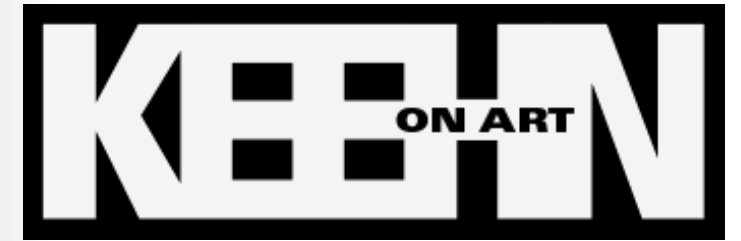
Existing pedestrian path

NEPTUNE DRIVE

Project Milestones



Dorka Keehn, Principal Art Curator



CHARLIE GADEKEN

13'T x 2'Wx2'D

Materials:

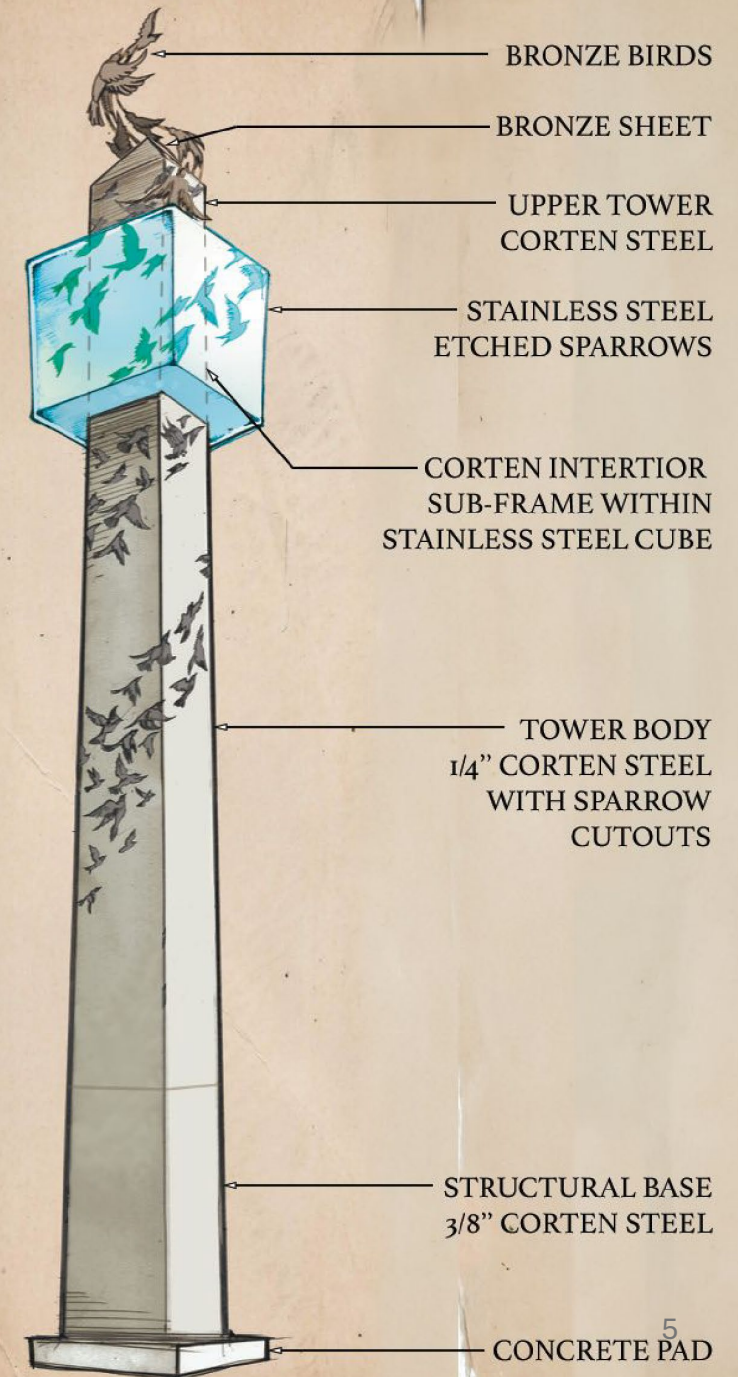
- Main tower – Corten Steel. A flock of sparrows wrapping around the tower are cut out of the steel.
- Upper Cube – Stainless steel cube with sparrows etched into the material
- Upper Tower –Corten Steel
- Apex – made of bronze sheet
- Sculptured Birds – 3D forms shaped from bronze sheet
- Base – Concrete or Stone

Lighting

- One large, ground-mounted, single-color LED Fixture inside the sculpture, illuminating the birds from within.
- Color to be generated from a custom piece of slumped glass that creates a unique color lens for the white LED
- Four uplights around the base of the sculpture
- Twinkling light at the Apex

Bio

Gadeken is an award-winning industrial artist working in the creative field for over 25 years, whose monumental interactive public artworks reimagine the world post-nature. Artwork commissions include Black Rock Arts Foundation, City of San Francisco, Insomniac Events, Coachella, City of Palo Alto, City of Calabasas, City of Los Altos, Stanford University, and more. Many of Charles' works have also been exhibited internationally.



YOKO KUBRICK

KALLIOPE

5'H x 2.9'W x 2.1'D

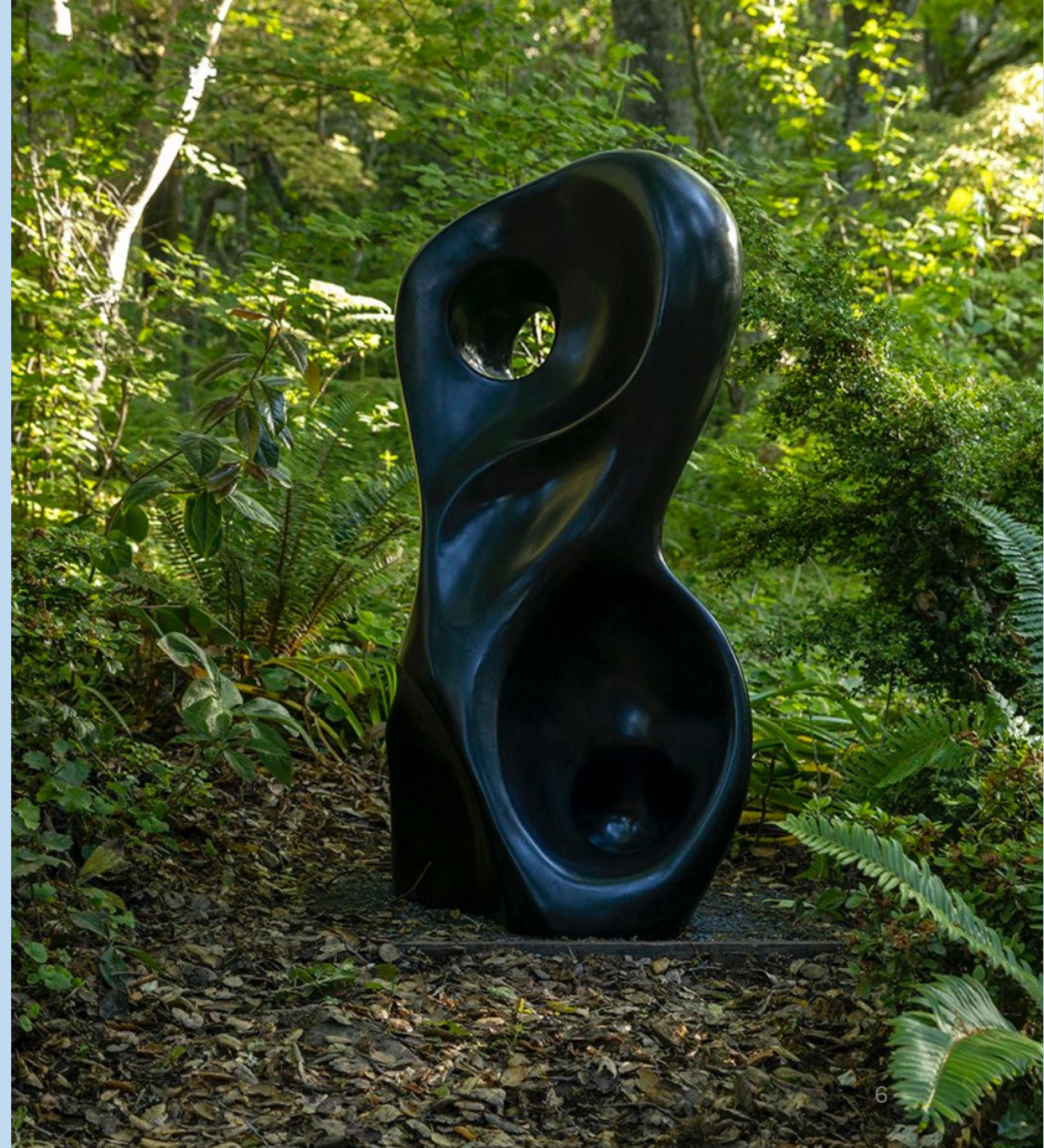
Material: Black Granite

Kalliope means "beautiful voice." In Greek mythology, she was a goddess of epic poetry and eloquence.

BIO

Kubrick, a Bay Area sculptor crafts abstract sculptures shaped by nature's forms. She intertwines these shapes with tales from classical mythology, recognizing recurring stories across time and space emanating from the collective unconscious. Half Japanese and half Czech, Kubrick's art bears the influence of Czech Art Nouveau, marrying intricate designs with her multicultural background.

Her artistic practice investigates the impact of nature's sensuality on human perception, combining the raw beauty of elements such as flowers, curves, and landscapes with classical and comparative mythology. Her work explores themes of universal aesthetics, the collective unconscious, and shared imagery that transcends cultural boundaries



HYBYCOZO

RESPIRE

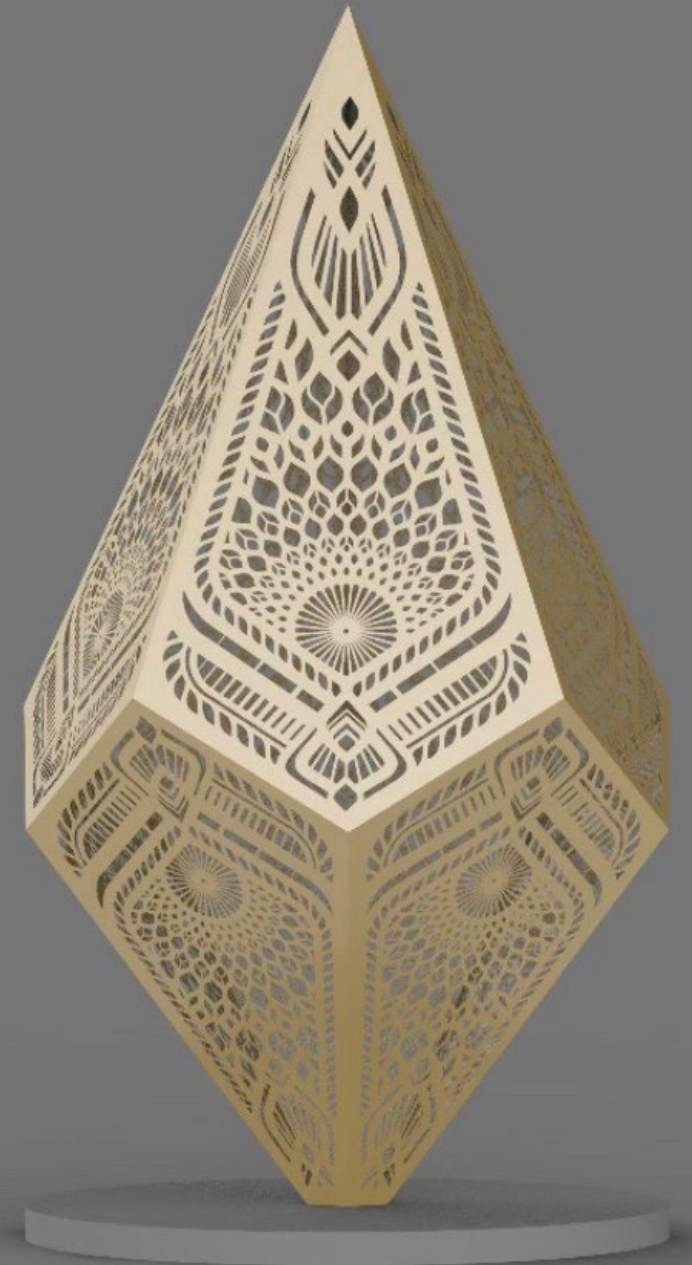
12'H x 6'W

Materials: Powder Coated Stainless Steel,
LED

The sculpture invites contemplation on the parallel of valuing every life and every breath. The laser cut pattern will be inspired by natural forms underscoring the interconnectedness of all beings.

BIO

HYBYCOZO is the collaborative studio of artists Serge Beaulieu and Yelena Filipchuk. Based in Los Angeles, their work consists of larger than life geometric sculptures, often with pattern and texture that draw on inspirations from science, mathematics, and natural phenomena. With permanent public artworks in Dubai, Istanbul, Las Vegas, Sacramento, New Zealand, and the SF Bay Area, they have exhibited with institutions such as The Smithsonian, The Cincinnati Museum of Art, The Oakland Museum of California, The Ulrich Museum of Art, and Crystal Bridges.



KATE RAUDENBUSH

LIFE FORCE

9' 9" 3/8" H x 11' 1 1/4" @x3' 1" D

Materials: 1/4" plate weathering steel, sanded 1/4" stainless steel, brass finished attaching hardware

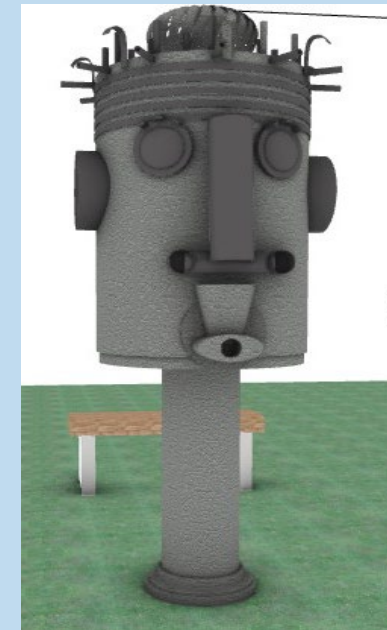
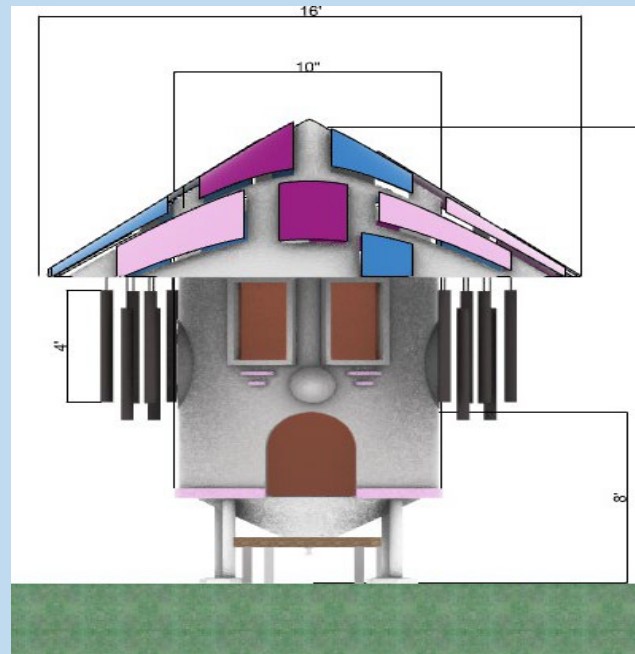
A portal of spiritual presence opens before you. Interwoven arcs of energetic vibrations spiral around a human silhouette held in a circular framework. The interplay of space and solid forms reminds us of the presence and absence of souls who have left this Earth, but still remain in our hearts. This sculpture is a symbolic threshold that invites us to consider the infinite mystery of our existence.

Bio

New York-based, Raudenbush creates allegorical environments at the intersection of sculpture and architecture. Laser-cut metal contemplative environments comment symbolically on the perils and potential of our evolving humanity. Form and space combine to create an ancient and futuristic aesthetic that aims to immerse the visitor in its mystery, grace and strength. Her sculptures are in civic collections in Montreal, Seoul, Tulum, New York, Washington DC, and San Francisco. Her art was featured in the record breaking "No Spectators: The Art of Burning Man" show at the Smithsonian Museum. In 2019, she received the National Citizen Artist Award from Americans for the Arts.



Other artwork
presented to ACLC





GUY OVERFELT

REFLECTION

8' H x 6.25'W x 5.42'D

Material: two-way security/privacy mirror

Inviting a new perspective and reflection on lives lost to police brutality. especially with the sculptural use of the two-way security/privacy mirror cladding, which is fitting and poetic.

Bio

Based in San Francisco, Overfelt is a multi-disciplinary post-conceptual artist. He works with various media including sculpture, performance, photography, video and drawing. His work has been exhibited internationally in galleries and museums including the Oakland Museum of California; Guangzhou Triennial, China; St. Mary's University, Halifax, Canada; The Havana Biennial, Cuba; Jack Hanley Gallery, San Francisco, and White Columns, New York City. His work has been acquired by the Berkeley Museum Collection and the JPMorgan Chase Collection, as well as private collections.

NOTE: Reflective mirror surface shall not be used due to proximity to Oakland airport due to visual impact to pilots and air traffic control personnel.



MICHAEL CHRISTIAN

BLOOM

H11' x W10' x L10'

Material: Steel

"Bloom" is an abstract sculpture crafted from thick coils of steel. The rust-colored metal forms loop and curve in an organic, flowerlike shape, with ribbons and tendrils unfurling outward. The textured surface captures shifting light and shadows, giving a sense of movement and opening, like a blossom emerging from a tightly wound bud. The sculpture's flowing lines and natural inspiration evoke the delicacy and beauty found in the unfolding of new life in nature. At 11 feet tall, "Bloom" has a powerful, larger-than-life presence while maintaining an earthy, grounded quality.

Bio

Bay Area based artist, Christian's large-scale steel creations have homes in city centers, private collections, and at events in North America, Europe, and Australia. His playful and interactive sculptures, inspired by organic forms and patterns in nature, are a mainstay at art and music festivals across the country. In addition to his sculpture, Christian continues to exhibit his drawings and paintings, as they play an integral part of his creative process.



RICHARD HUDSON

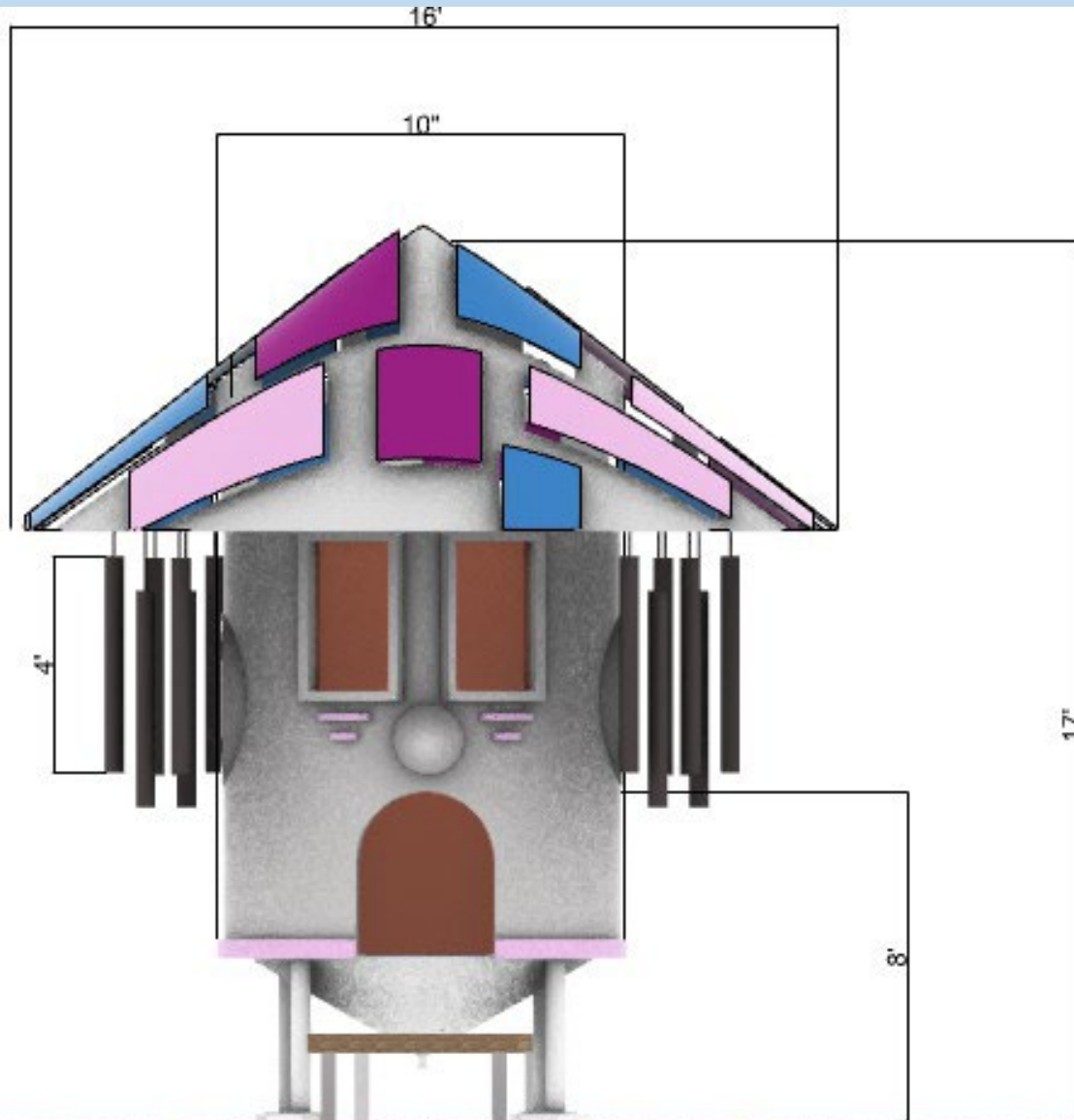
THE TEAR

5'9" x 3'4"

Material: Mirrored stainless steel

Hudson is a British sculptor renowned for his organic artistic language. Hudson says his work is influenced by the flux, shape and movement of billions of particles that nature draws together from their unbridled chaos to create beauty. Hudson's hands-on relationship with his diverse materials – most often marble, wood, steel or bronze – produces organic, polished work that is at once timeless and contemporary. Exploring the canon of Western sculpture and changing approaches to beauty, Hudson's smooth and sensual sculptures concern not only the fields of art and art history but also psychology, anthropology and philosophy

NOTE: Reflective mirror surface shall not be used due to proximity to Oakland airport due to visual impact to pilots and air traffic control personnel.



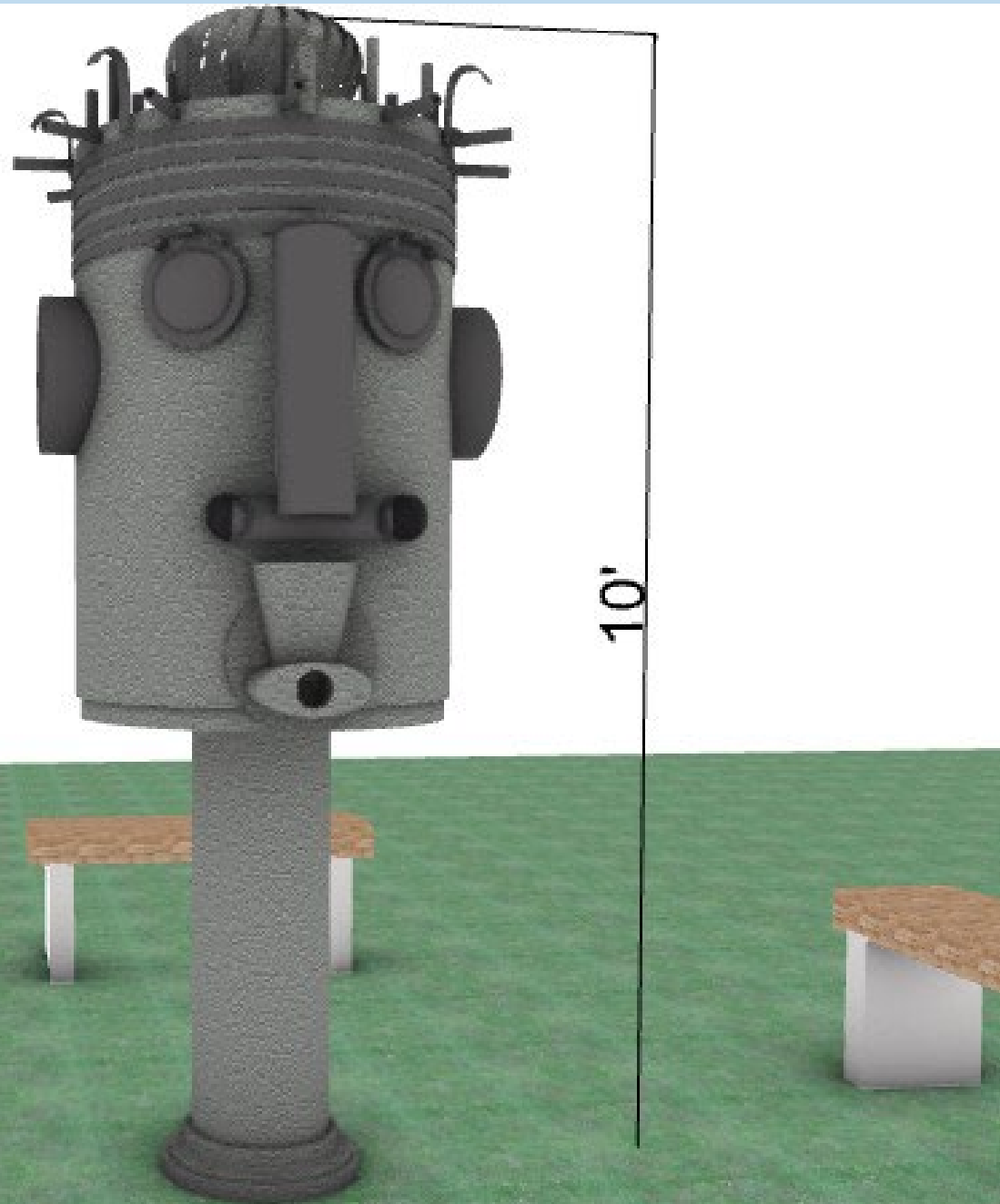
ZULU HERU ABBOTT

Materials: stainless steel, stained glass
17'H x 10' D x 16' roof

This sculpture is based on an African tribal mask that provides a space for healing and meditation. The viewer will be transfixed by the scale and bold cultural identity and soothed by a sound bath of wind chimes.

Bio

San Francisco based artist Heru is an army veteran, engineer, crane operator, and innovative sculptor. He is known for creating stunning multimedia Afrocentric sculptures using discarded materials. With a BFA in Fine Arts from Howard University and over a decade of welding and metal fabrication experience, Zulu is a master at turning discarded metals into thought-provoking art.



ZULU HERU

PAN

10'T x 5'D

Materials: stainless steel

Pan, the Shepard, is a guide, leading others towards peace and safety. Even in the face of evil, he is morally upright, protecting the Sheep from the wolves. However, he does not kill or resent the wolves, for he understands the circle of life and death. He is the messenger of God and the guardian of righteous ways. The Shepard guides and protects the Sheep as he carries out the positive will of the divine. He watches over all living beings.

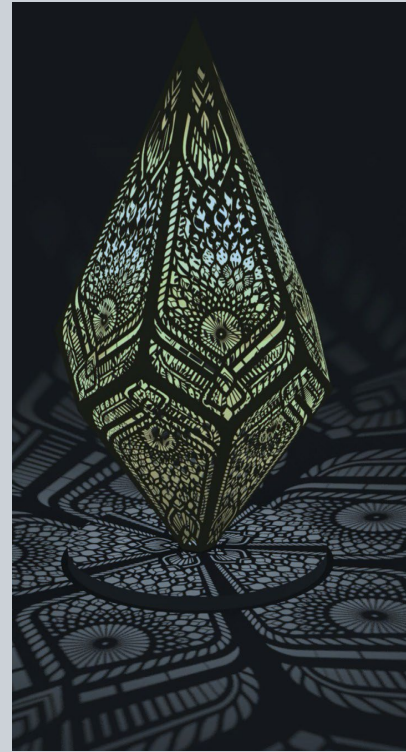
ACLC Selection #1
5 votes



ACLC Selection #2
5 votes



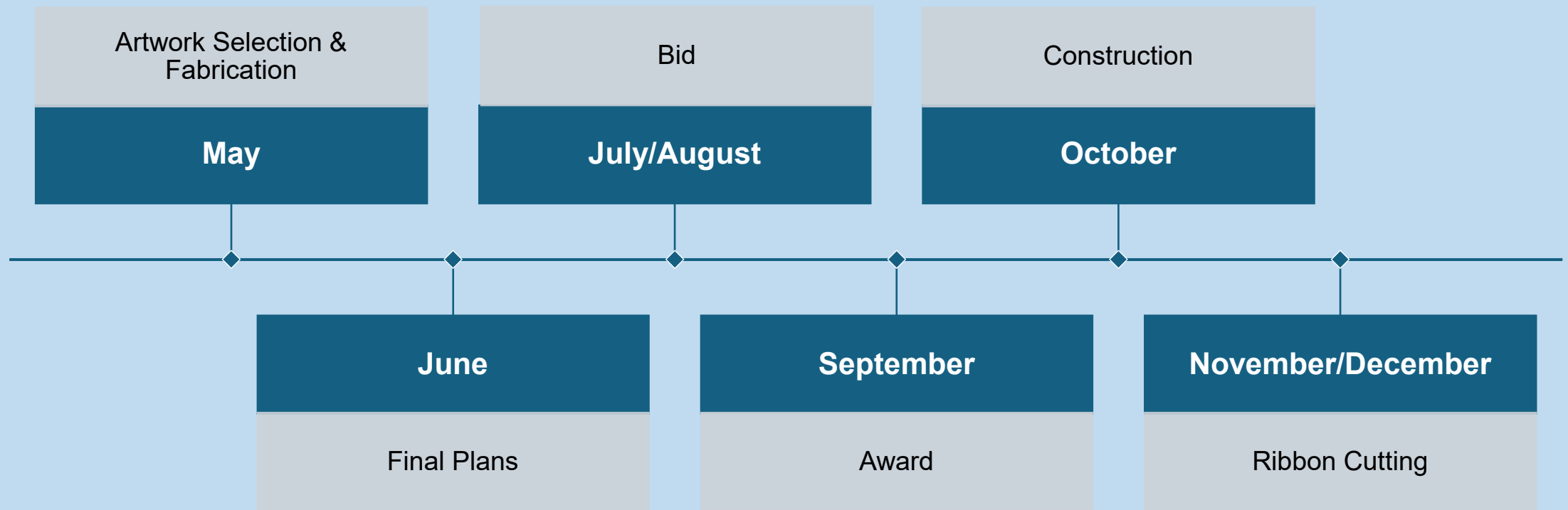
ACLC Selection #3
4 votes



Taylor Family Selection



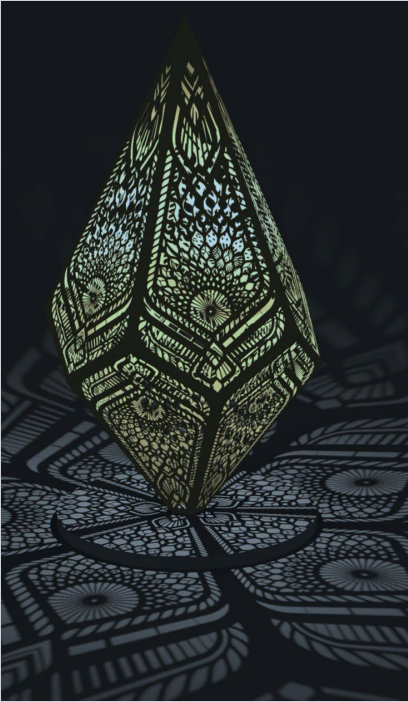



Next Steps and Timeline



Council Action

1. Discussion/clarifying questions
2. Select ONE artwork
3. Vote on top ranking artwork to be incorporated into the final design plans

	ACL Selection #1 5 votes	ACL Selection #2 5 votes	ACL Selection #3 4 votes	Taylor Family Selection
Artwork				
Council Vote				