



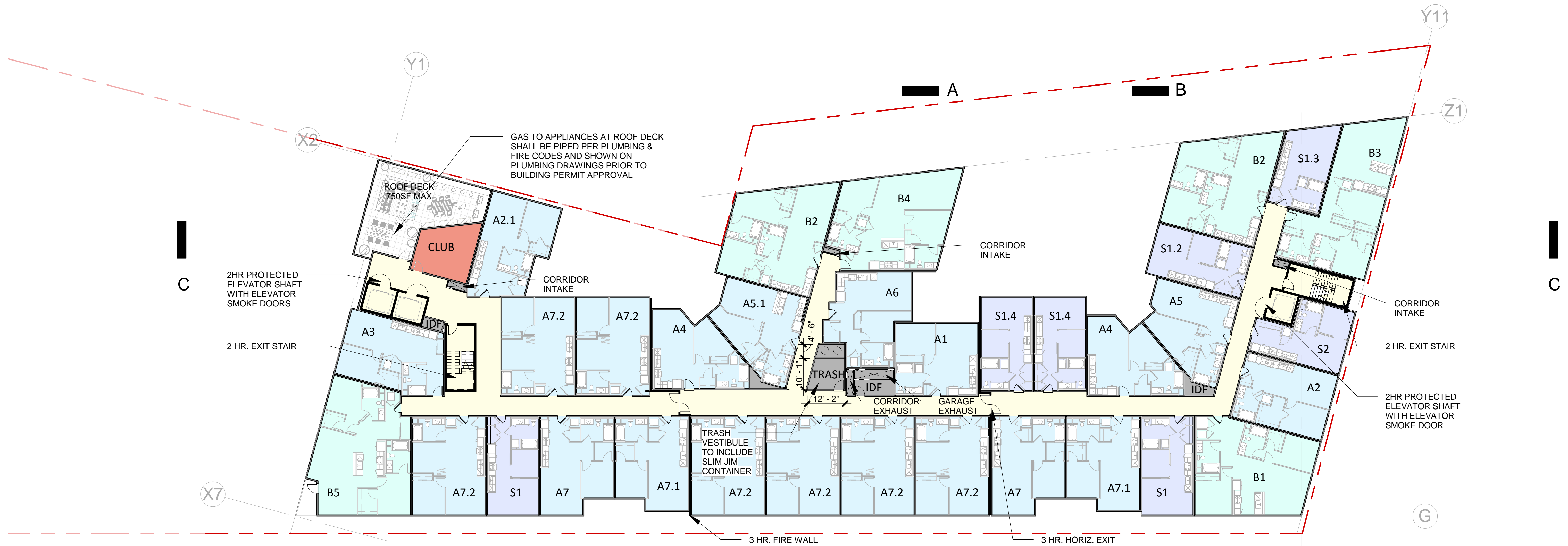
- Amenity
- Studio
- One Bedroom
- Two Bedroom
- Community Space
- Circulation
- Service
- Garage

PLN16-0067  
EXHIBIT Q  
June 15, 2017



- Amenity
- Studio
- One Bedroom
- Two Bedroom
- Community Space
- Circulation
- Service
- Garage

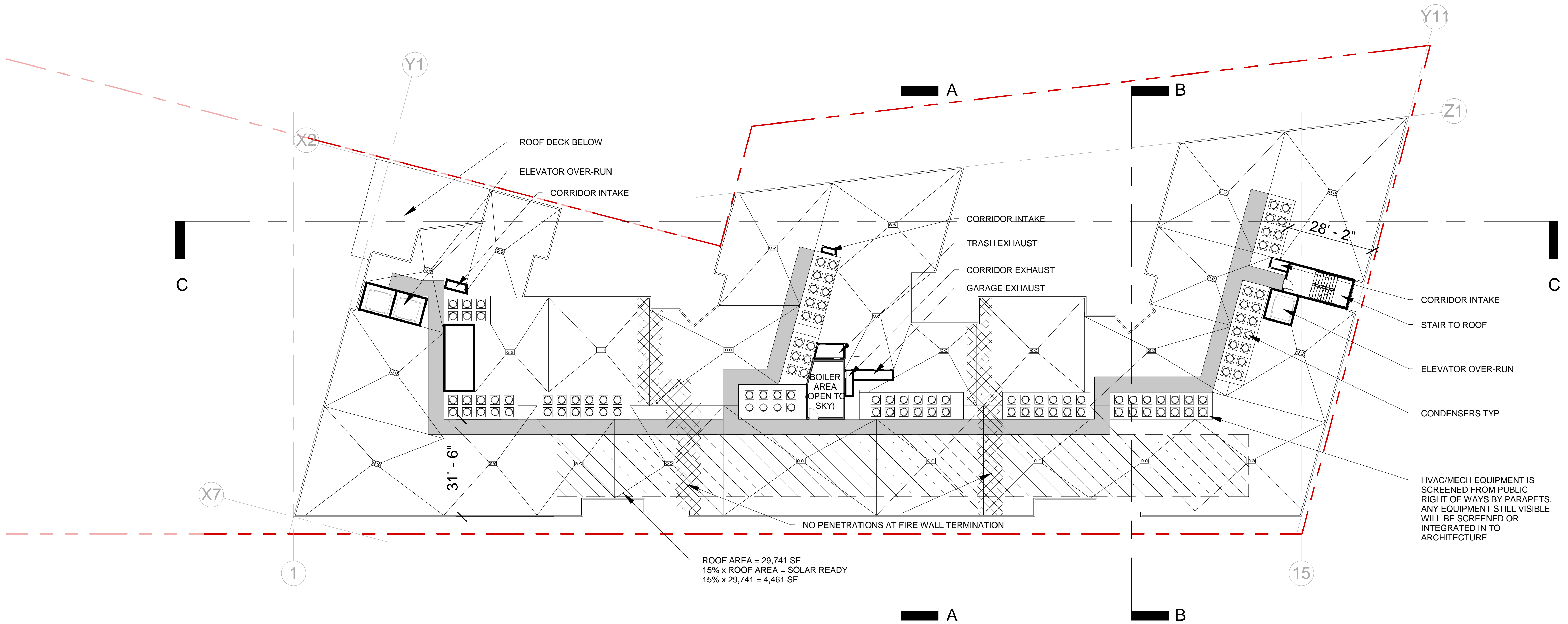
PLN16-0067  
 EXHIBIT R  
 June 15, 2017



- Amenity
- Studio
- One Bedroom
- Two Bedroom
- Community Space
- Circulation
- Service
- Garage

The Club will be a lounge like space where residents can gather for private events. Typically include a kitchen/bar, televisions, seating, games and work stations.

PLN16-0067  
EXHIBIT S  
June 15, 2017



PLN16-0067  
 EXHIBIT T  
 June 15, 2017



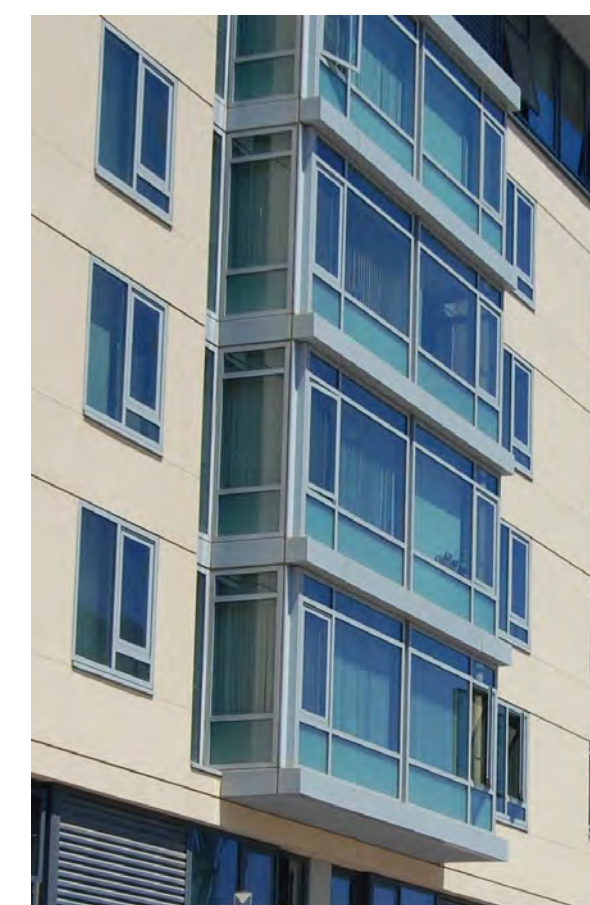
1. Cementitious Panel



2. Plaster



3. Cement Plank Siding



4. Aluminum Window Wall



5. Aluminum Window



6. Vinyl Window



7. Glass Rail



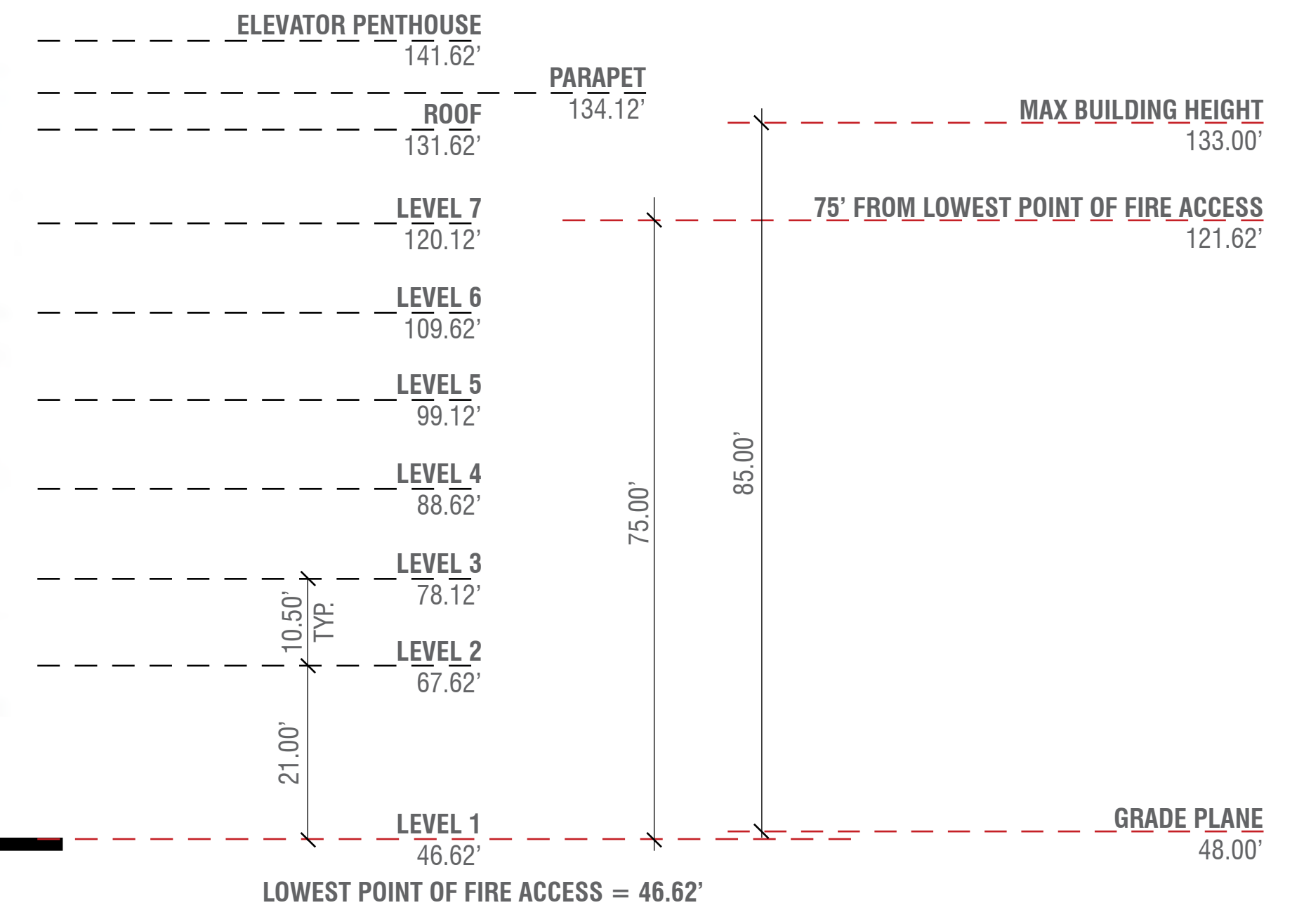
8. Metal Awning



9. Storefront System



10. Green Wall



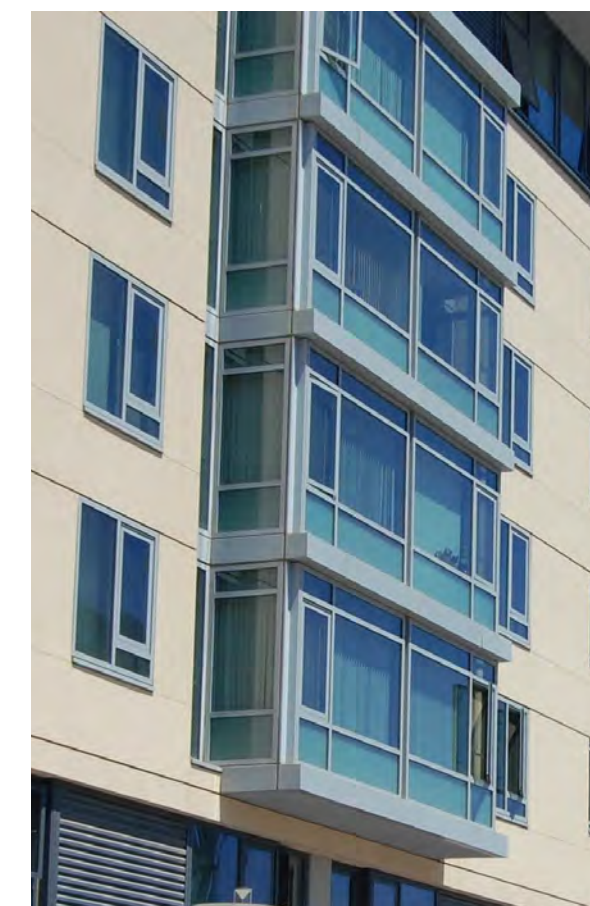
1. Cementitious Panel



2. Plaster



3. Cement Plank Siding



4. Aluminum Window Wall



5. Aluminum Window



6. Vinyl Window



7. Glass Rail



8. Metal Awning



9. Storefront System



10. Green Wall



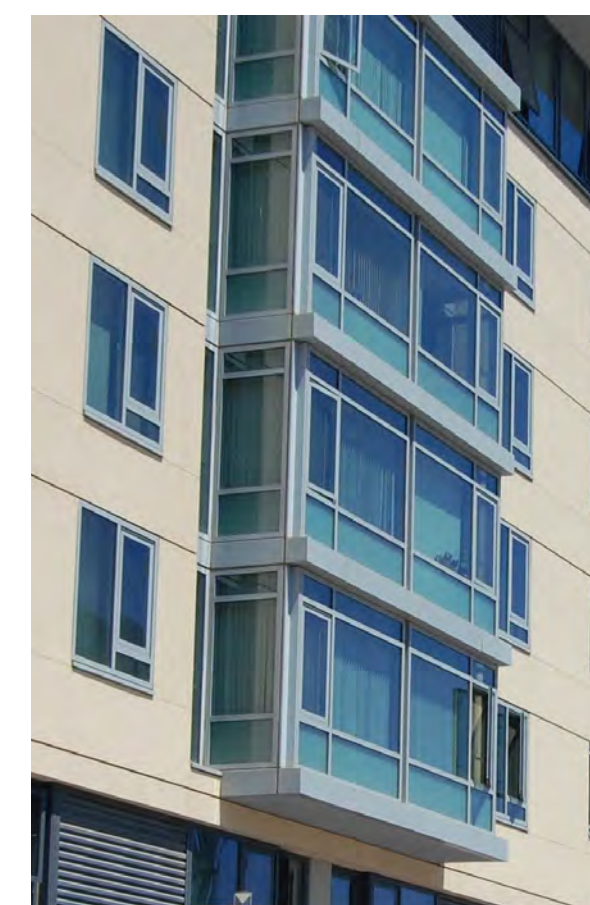
1. Cementitious Panel



2. Plaster



3. Cement Plank Siding



4. Aluminum Window Wall



5. Aluminum Window



6. Vinyl Window



7. Glass Rail



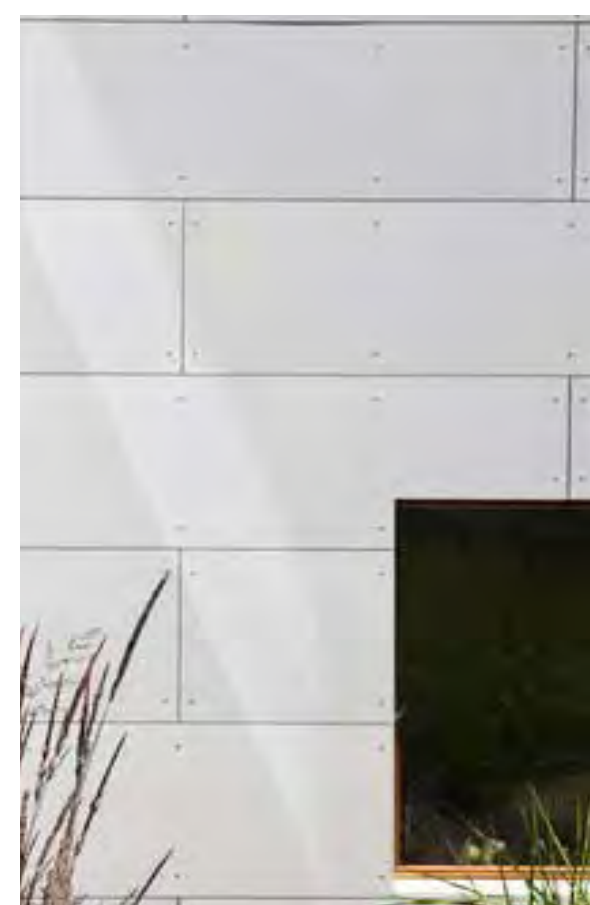
8. Metal Awning



9. Storefront System



10. Green Wall



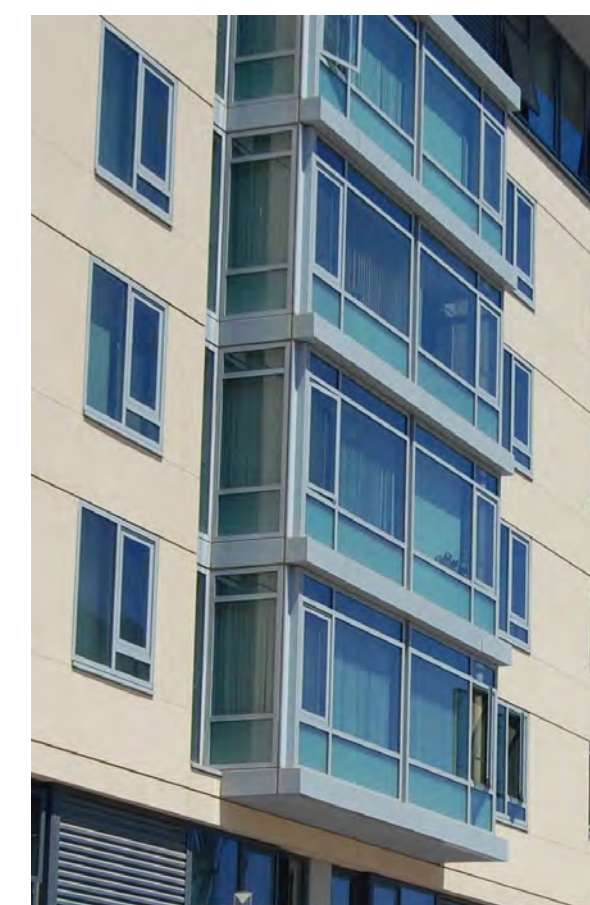
1. Cementitious Panel



2. Plaster



3. Cement Plank Siding



4. Aluminum Window Wall



5. Aluminum Window



6. Vinyl Window



7. Glass Rail



8. Metal Awning

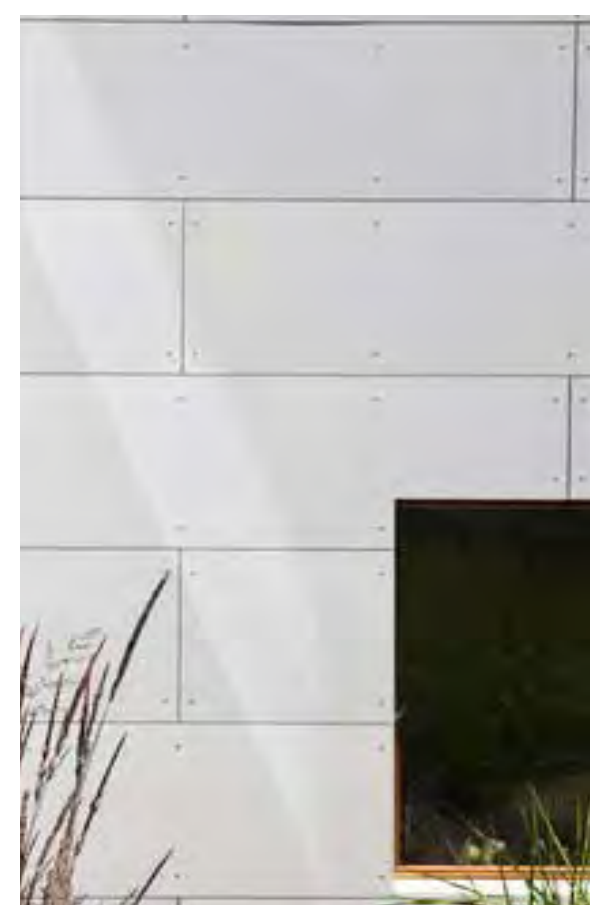
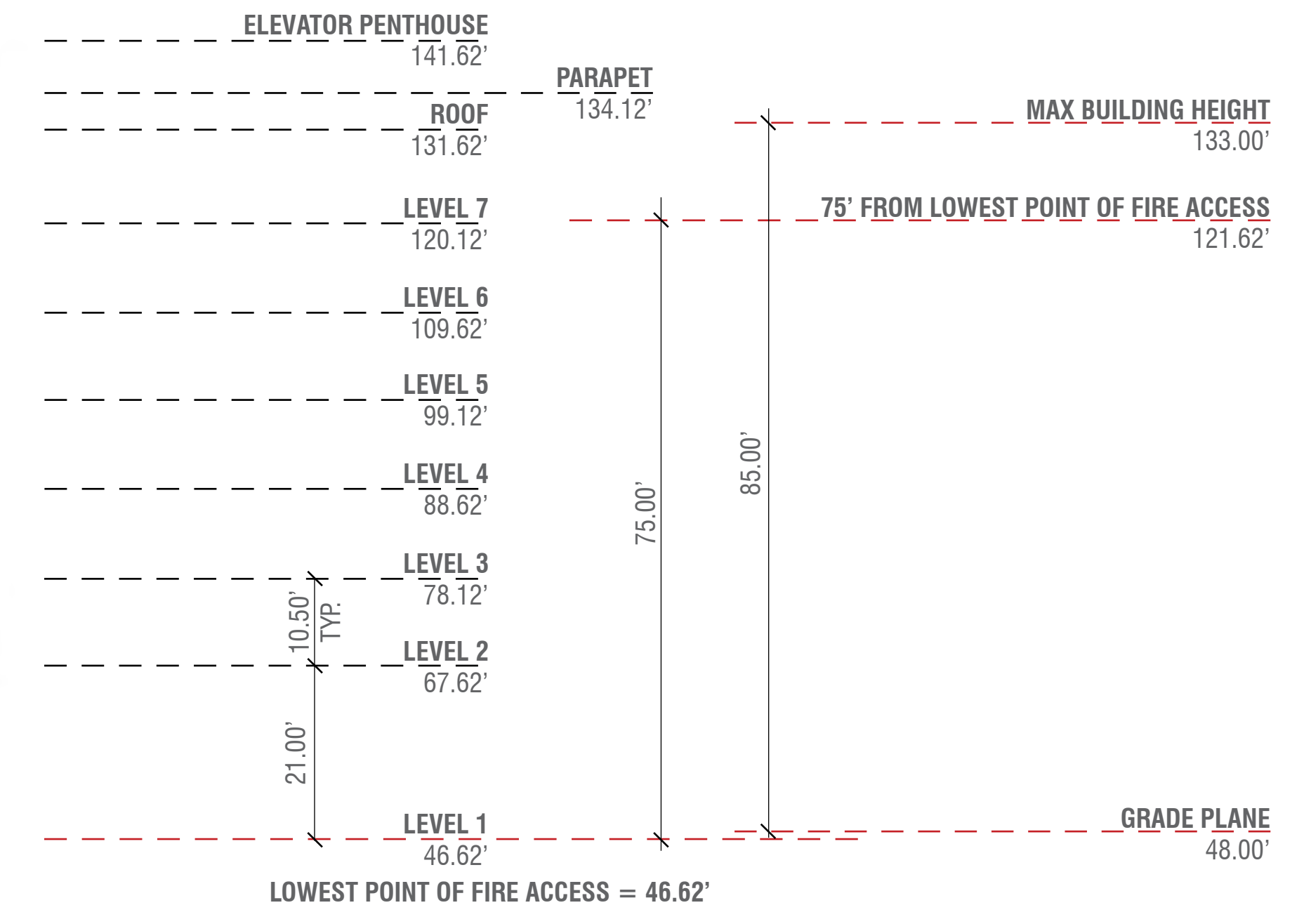


9. Storefront System



10. Green Wall





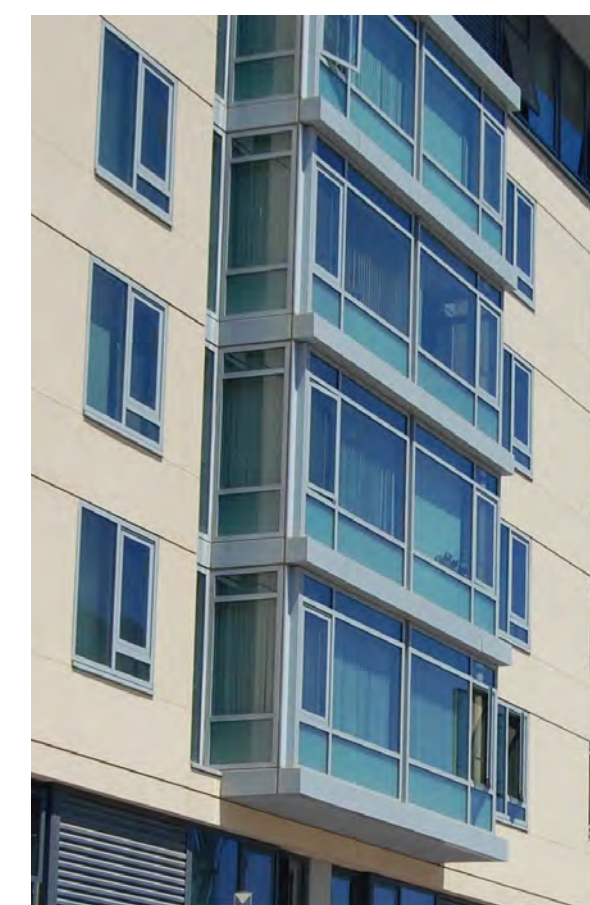
1. Cementitious Panel



2. Plaster



3. Cement Plank Siding



4. Aluminum Window Wall



5. Aluminum Window



6. Vinyl Window



7. Glass Rail



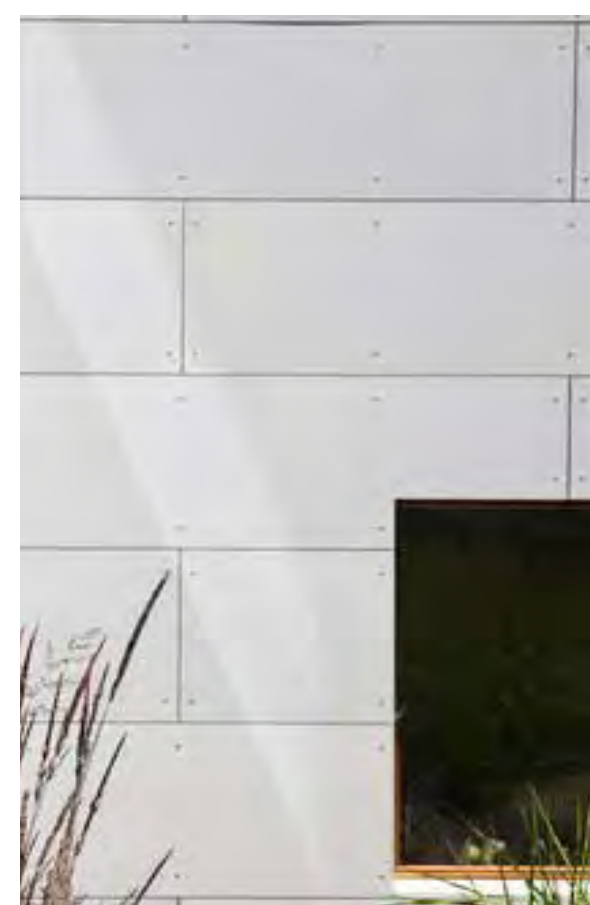
8. Metal Awning



9. Storefront System



10. Green Wall



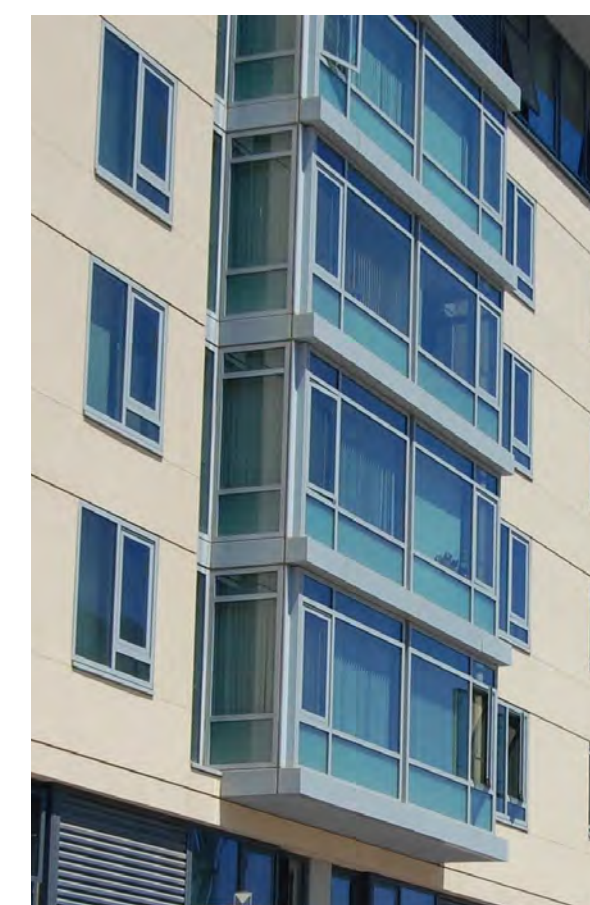
1. Cementitious Panel



2. Plaster



3. Cement Plank Siding



4. Aluminum Window Wall



5. Aluminum Window



6. Vinyl Window



7. Glass Rail



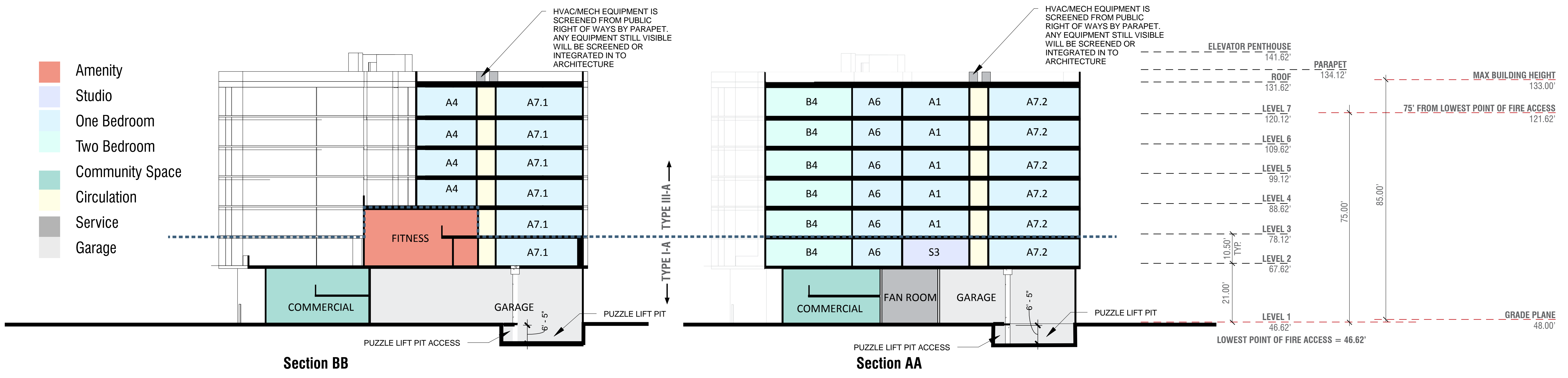
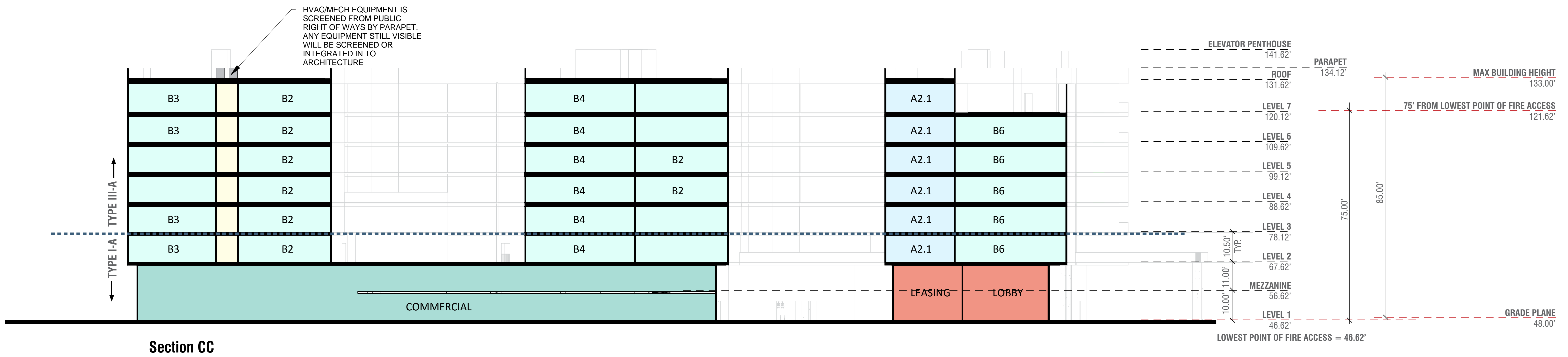
8. Metal Awning



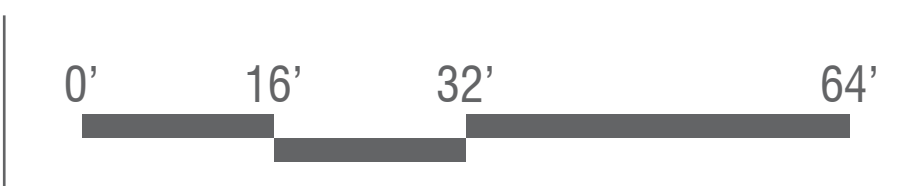
9. Storefront System

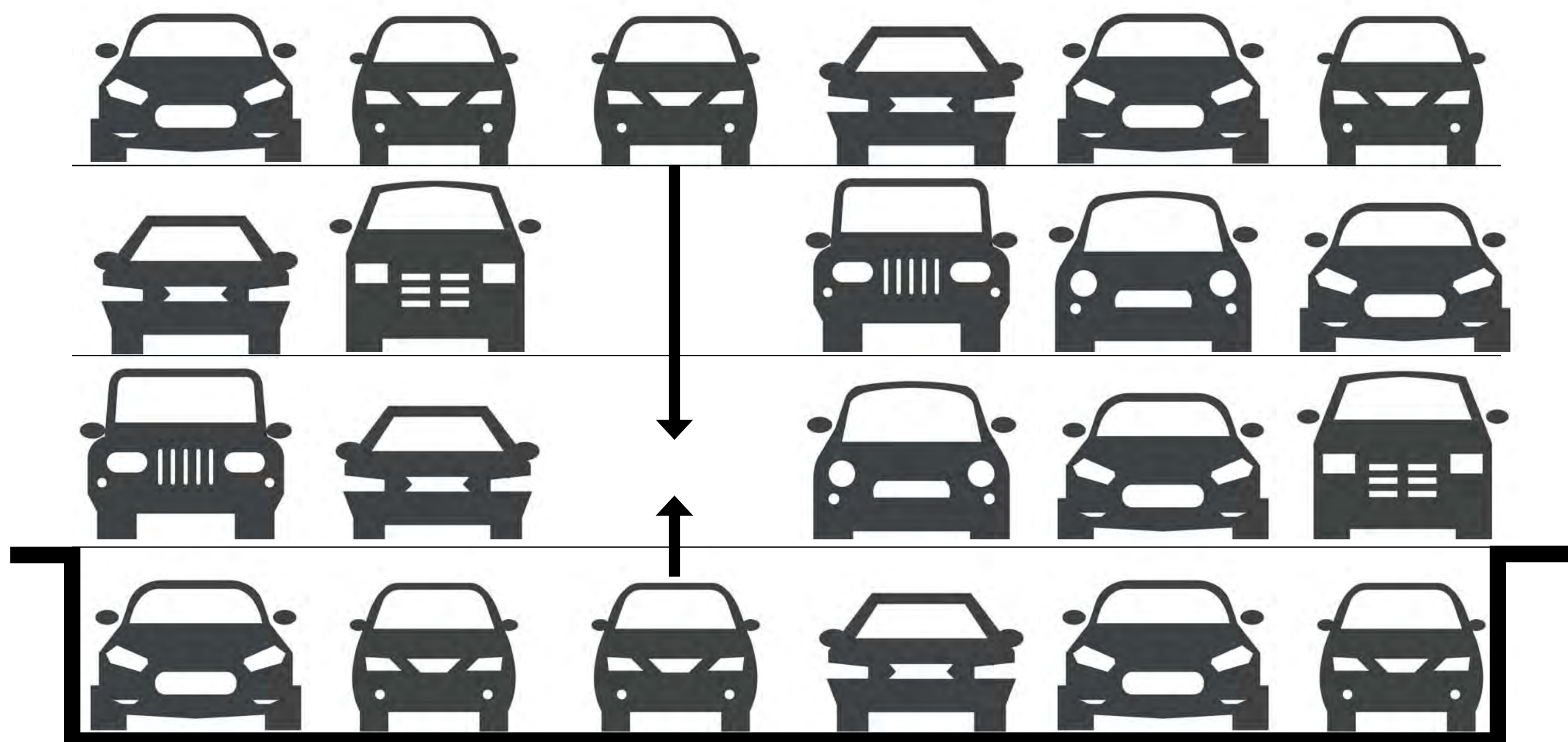


10. Green Wall



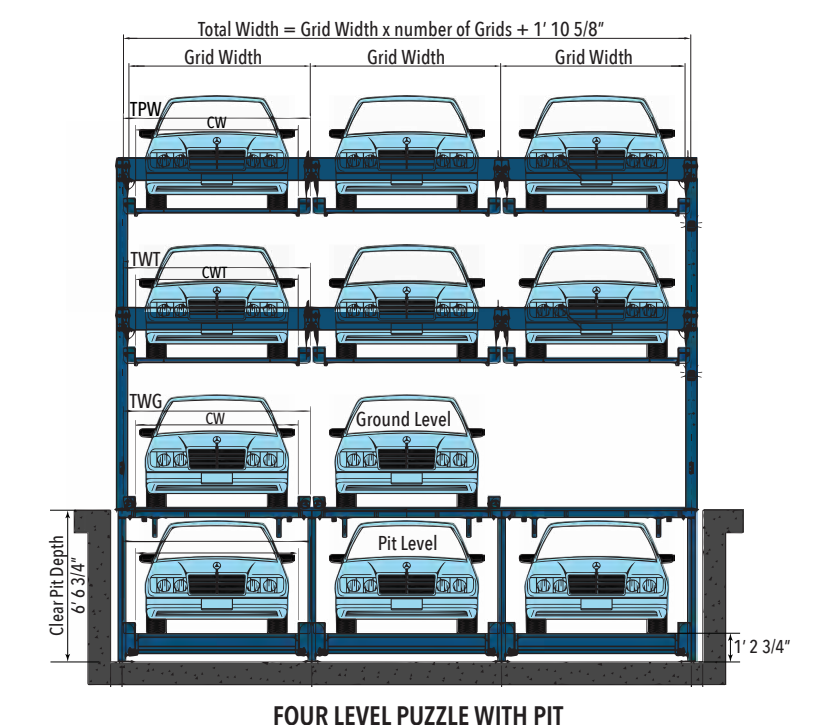
PLN16-0067  
EXHIBIT AA  
June 15, 2017





These 2 rows shift left and right to create space for the upper 2 levels to come down or the bottom level to come up

**6 SPACES TURN IN TO 22 SPACES**



Standard Four Level Puzzle Specifications										
Standard Vehicle Size	Length	Width	Height	Equipment dimensions	Total Length	Total Width	Total Clear Height	Center Distance Between Columns (CD)		Pit Depth (Optional)
								Grid Width	Grid Width	
Mid-Size (MS)	15' 9"	6' 2 3/4"	below 4' 11"	MS	20' 1 3/8"	Grid Width x	24' 5 1/4"	19' 6 1/4"	7' 10 1/2"	6' 6 3/4"
Full-Size (FS)	16' 4 7/8"	6' 4 3/4"	below 5' 11"	FS	20' 1 3/8"	number of Grids +	24' 5 1/4"	19' 6 1/4"	8' 12"	6' 6 3/4"
SUV	17' 3/4"	6' 6 3/4"	below 6'	XL-SUV	20' 9 1/4"	1' 10 5/8"	24' 5 1/4"	20' 2 1/8"	8' 2 3/8"	6' 6 3/4"

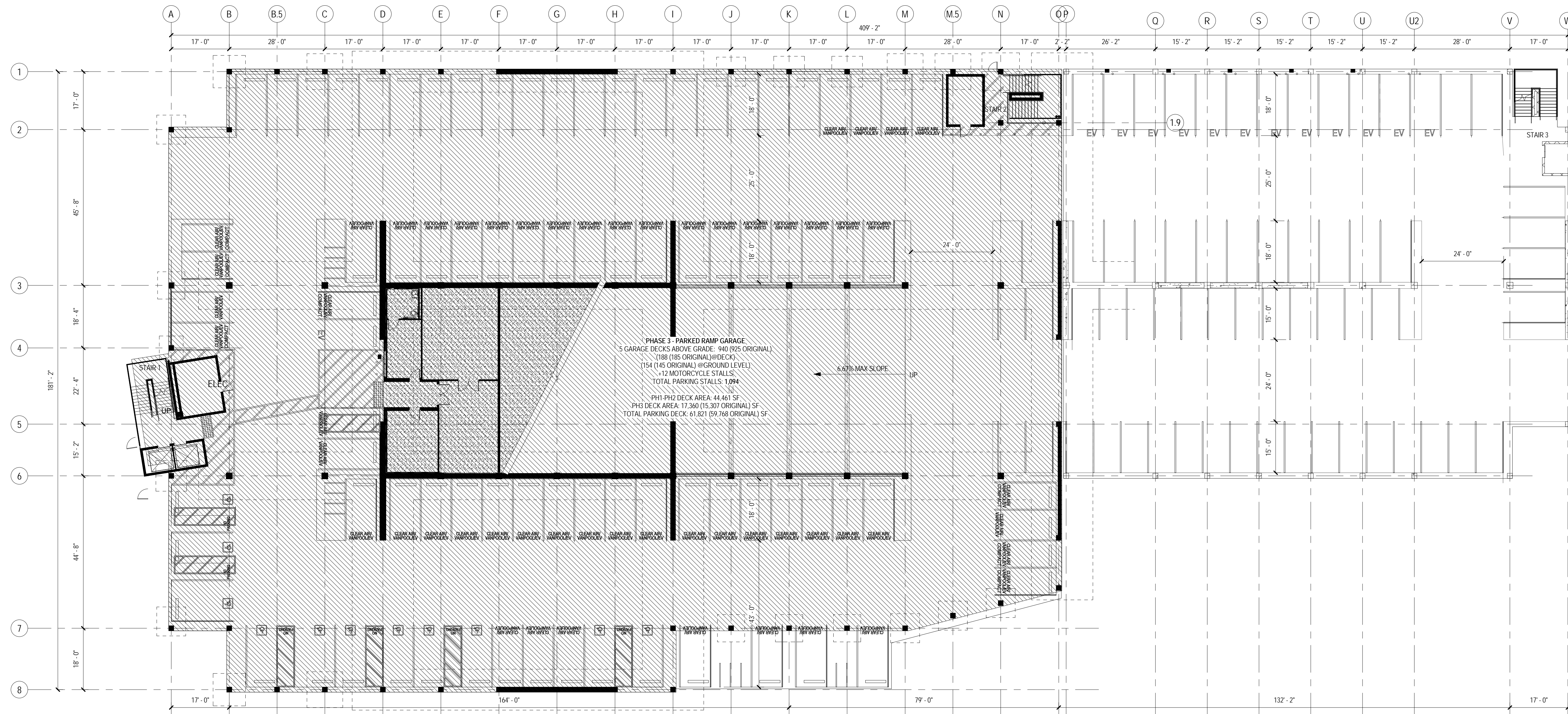
Weight Calculations	Steel Structure per Parking Space	Pallet and Components per Parking Space	Vehicle per Parking Space	Other Components	Packing Space dimensions	Clear Width Traverse Row (CWT)	Clear Width Upper & Ground Level (CW)	Clear Height Lift Spaces (CHL)	Grid Width Traverse Spaces (TWT)	Grid Width Upper Lift (TWU)	Grid Width Ground Space (TWG)
	1,047 pounds	1,234 pounds	4,409 pounds	221 pounds		6' 7 3/8"	6' 9 3/8"	Min. 4' 11"	7' 6"	7' 8"	7' 9 1/4"
						FS	6' 11 3/8"	Min. 4' 11"	7' 8"	7' 10"	7' 11 1/8"
						XL-SUV	6' 11 3/8"	Min. 4' 11"	7' 10"	8"	8' 1 1/8"

Custom, tandem, and electric vehicle charging options are available. Please consult with your CityLift design team about which options are best for your project. Lifts with pit designs must have a gate installed for safety purposes. \*Recommended clear height for ground level access is 5' 10" for driver comfort.

# EXISTING

# PHASE 2

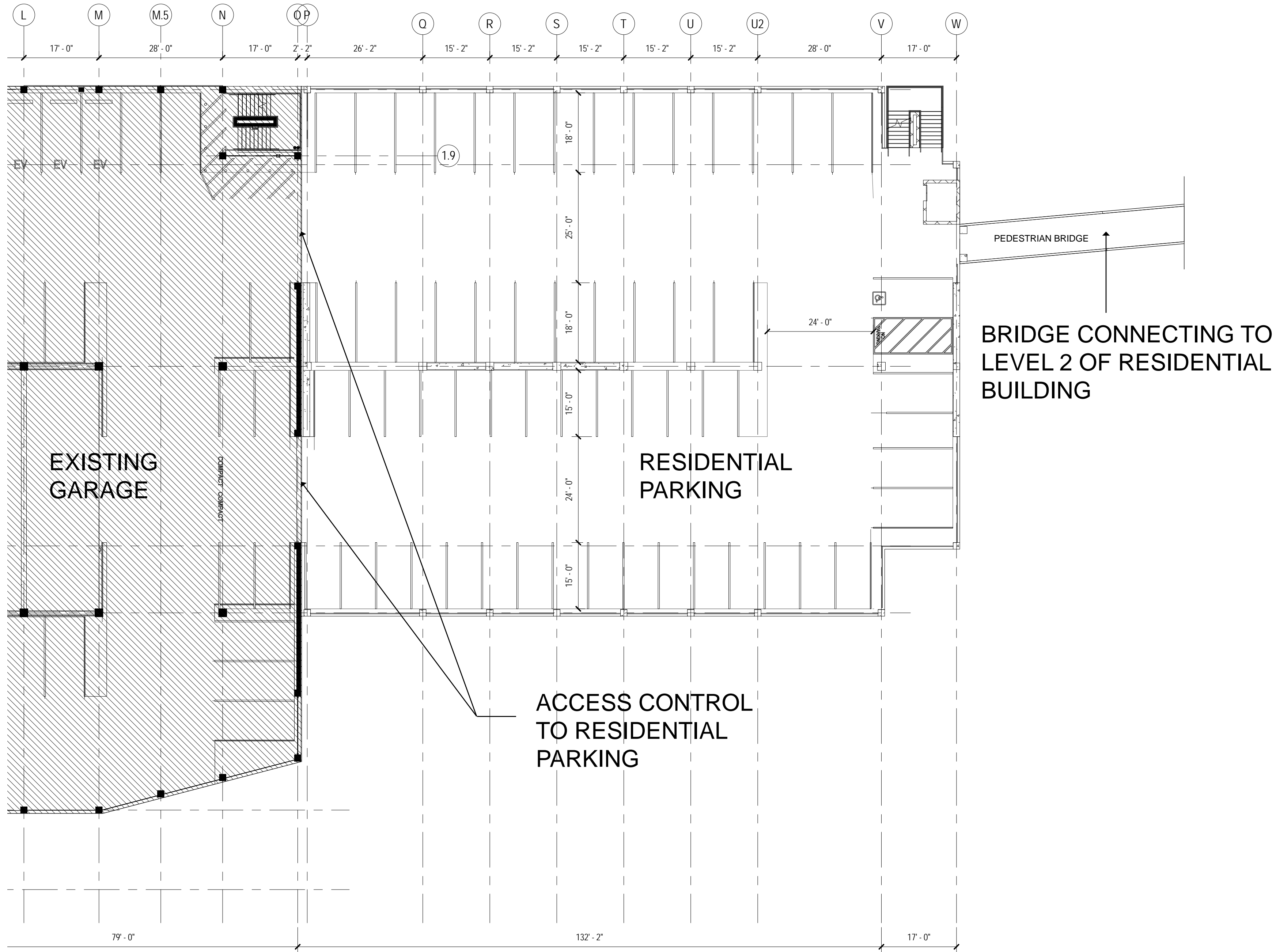
(To be Built Concurrent with Residential Building)



Required commercial parking will be dispersed through out the garage  
 Required Residential Parking will be on level 3-4 in phase 2

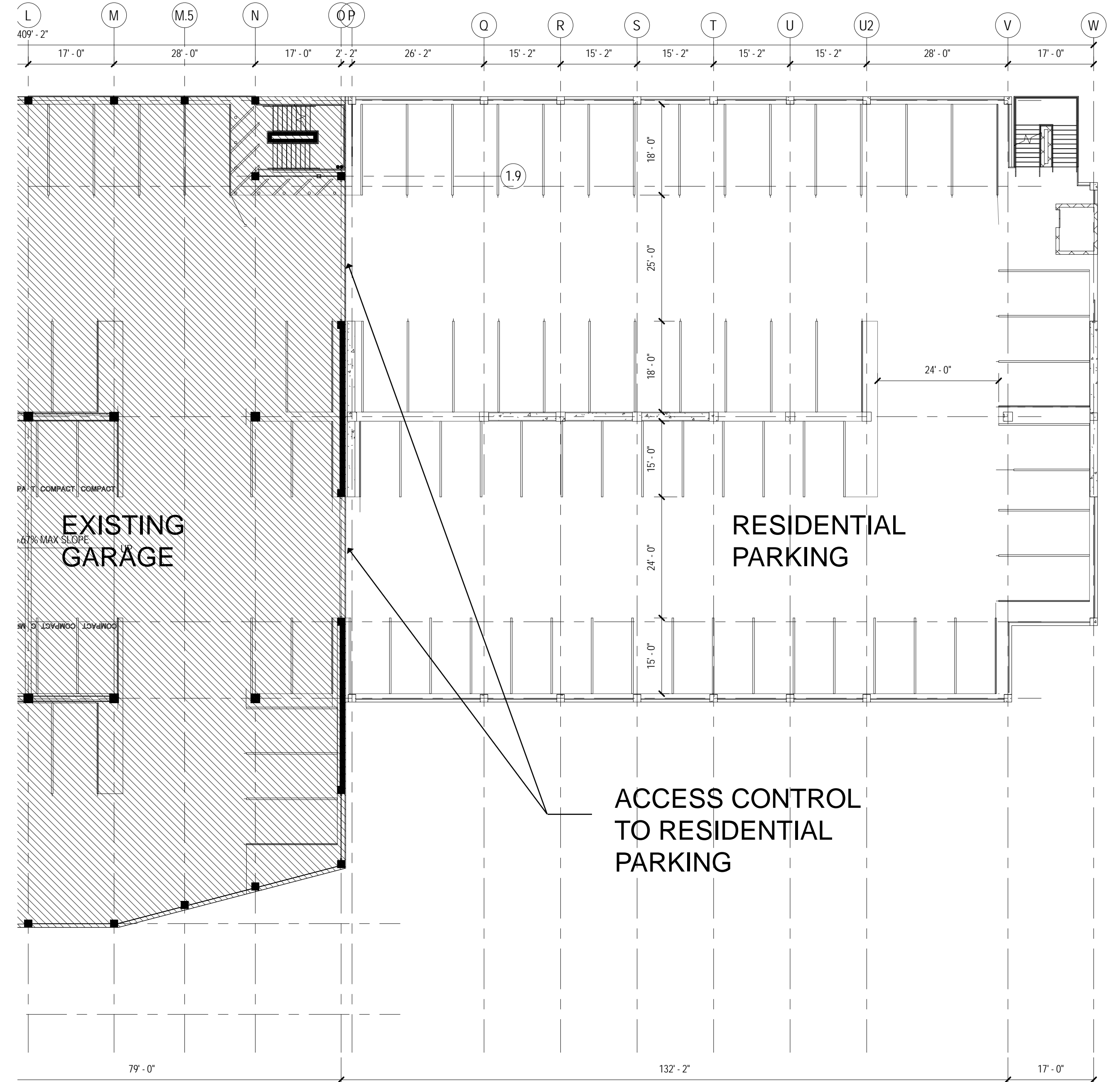
26 Spaces  
 118 Spaces  
 1 Accessible Space  
 56 Compact Spaces  
 61 Regular Spaces

# RESIDENTIAL PARKING



## Level 3 Residential Parking

Accessible Space	1
Compact Spaces	28
Standard Spaces	29
<b>Total</b>	<b>58</b>



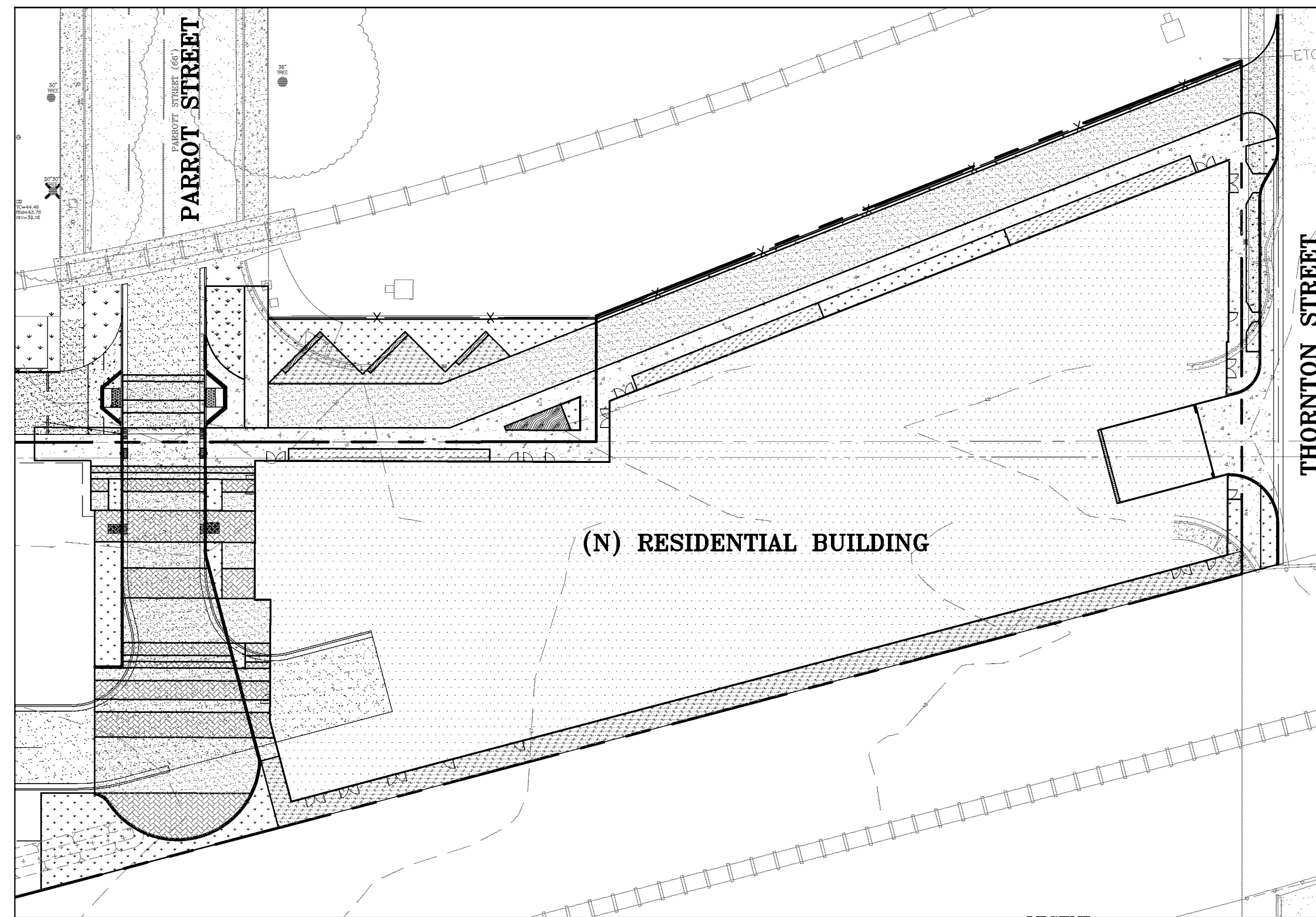
## Level 4 Residential Parking

Accessible Space	0
Compact Spaces	28
Standard Spaces	32
<b>Total</b>	<b>60</b>

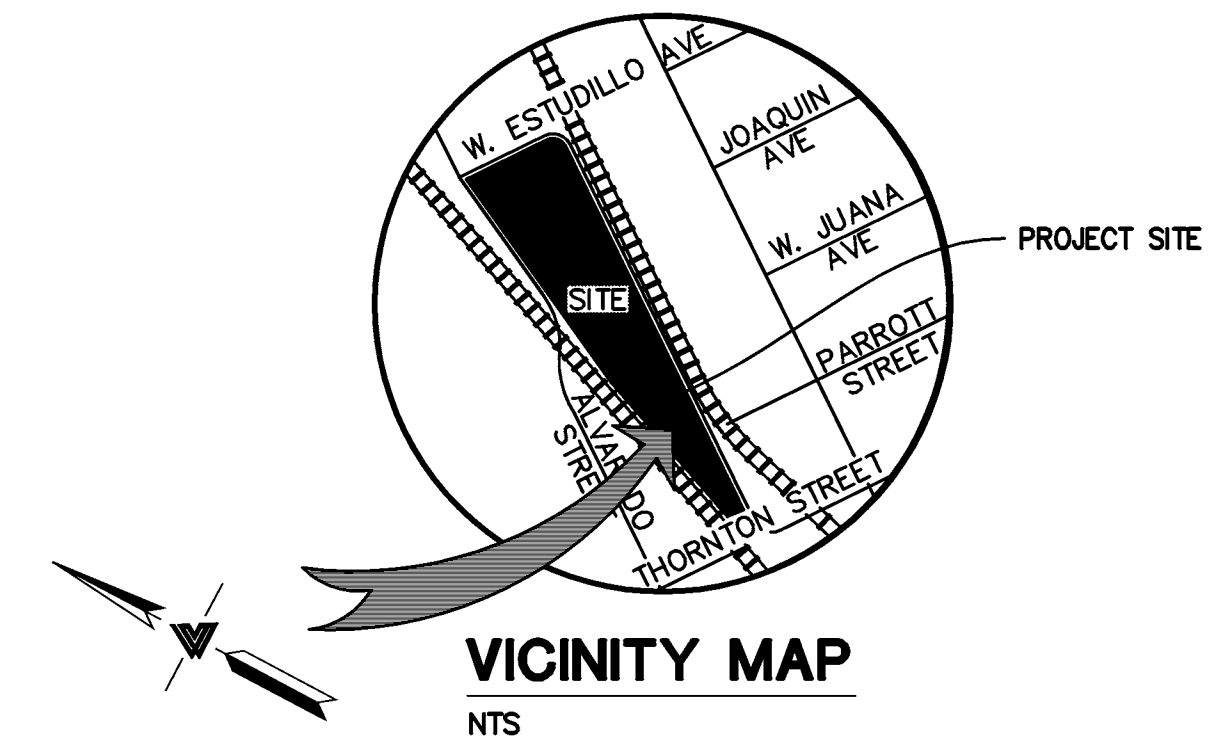
# SAN LEANDRO TECH CAMPUS RESIDENTIAL TOD SAN LEANDRO, CALIFORNIA

## LEGEND

EXISTING	PROPOSED	DESCRIPTION
---	---	BOUNDARY
---	---	PROPERTY LINE
---	---	RETAINING WALL
---	---	LANDSCAPE RETAINING WALL
---	— RW — RW	RAINWATER TIGHTLINE
---	---	SUBDRAIN LINE
---	---	TIGHTLINE
---	---	STORM DRAIN LINE
---	---	SANITARY SEWER LINE
---	---	WATER LINE
---	---	GAS LINE
---	---	PRESSURE LINE
---	---	JOINT TRENCH
---	---	SET BACK LINE
---	---	CONCRETE VALLEY GUTTER
---	---	EARTHEN SWALE
---	---	CATCH BASIN
---	---	JUNCTION BOX
---	---	AREA DRAIN
---	---	CURB INLET
---	---	STORM DRAIN MANHOLE
---	---	FIRE HYDRANT
---	---	SANITARY SEWER MANHOLE
---	---	STREET SIGN
---	---	SPOT ELEVATION
---	---	FLOW DIRECTION
---	---	DEMOLISH/REMOVE
---	---	BENCHMARK
---	---	CONTOURS
---	---	TREE TO BE REMOVED



KEY MAP  
1" = 30'



## REFERENCES

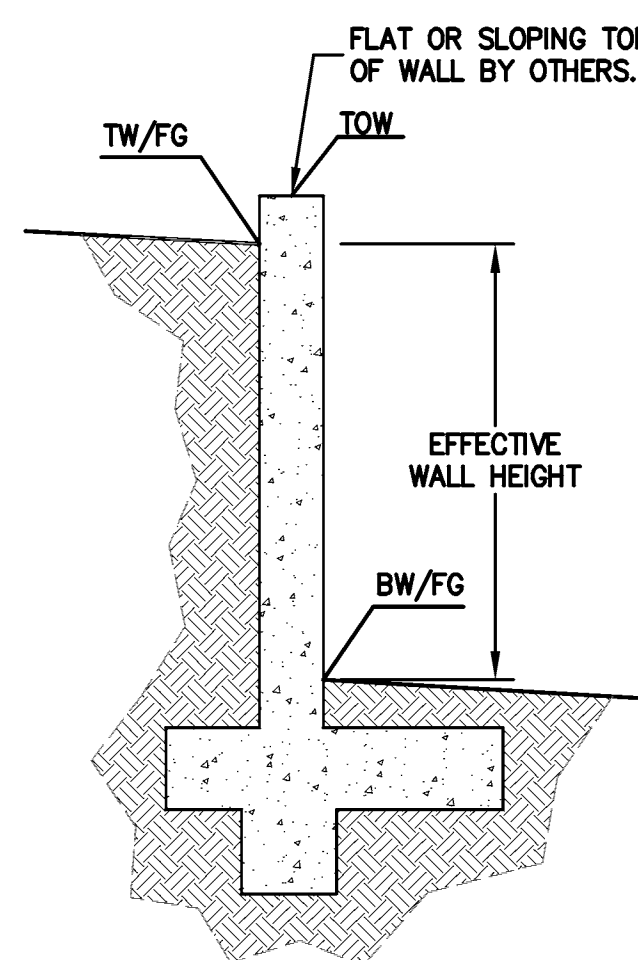
- THIS GRADING AND DRAINAGE PLAN IS SUPPLEMENTAL TO:
1. TOPOGRAPHIC SURVEY BY LEA & BRAZE ENGINEERING INC., ENTITLED: "ALTA/ACSM LAND TITLE SURVEY" SAN LEANDRO, CA DATED: 07-30-07 JOB# 2070219
  2. SITE PLAN BY TCA ARCHITECTS FOR: "SAN LEANDRO TECH CAMPUS - RESIDENTIAL" SAN LEANDRO, CA
  3. LANDSCAPE PLAN BY PGA DESIGN FOR "SAN LEANDRO TECH CAMPUS - RESIDENTIAL" SAN LEANDRO, CA
- THE CONTRACTOR SHALL REFER TO THE ABOVE NOTED SURVEY AND PLAN, AND SHALL VERIFY BOTH EXISTING AND PROPOSED ITEMS ACCORDING TO THEM.

## ABBREVIATIONS

AB	AGGREGATE BASE	LF	LINEAR FEET
AC	ASPHALT CONCRETE	MAX	MAXIMUM
ACC	ACCESSIBLE	MH	MANHOLE
AD	AREA DRAIN	MIN	MINIMUM
BC	BEGINNING OF CURVE	MON.	MONUMENT
B & D	BEARING & DISTANCE	NEW	NEW
BM	BENCHMARK	NO.	NUMBER
BW/FG	BOTTOM OF WALL/FINISH	NTS	NOT TO SCALE
GRADE		O.C.	ON CENTER
CB	CATCH BASIN	O/J	OVER
C & G	CURB AND GUTTER	(PA)	PLANTING AREA
CL	CENTER LINE	PE	PEDESTRIAN
CPP	CORRUGATED PLASTIC PIPE (SMOOTH INTERIOR)	PIV	POST INDICATOR VALVE
CO	CLEANOUT	PSS	PUBLIC SERVICES EASEMENT
COTG	CLEANOUT TO GRADE	P	PROPERTY LINE
CONC	CONCRETE	PP	POWER POLE
CONST	CONSTRUCT or -TION	PUE	PUBLIC UTILITY EASEMENT
CONC COR	CONCRETE CORNER	PVC	POLYVINYL CHLORIDE
CY	CUBIC YARD	R	RADIUS
D	DIAMETER	RCP	REINFORCED CONCRETE PIPE
DI	DROP INLET	RIM	RIM ELEVATION
DIP	DUCTILE IRON PIPE	RW	RAINWATER
EA	EACH	R/W	RIGHT OF WAY
EC	END OF CURVE	S	SLOPE
EG	EXISTING GRADE	S.A.D.	SEE ARCHITECTURAL DRAWINGS
EL	ELEVATIONS	SAN	SANITARY
EP	EDGE OF PAVEMENT	SD	STORM DRAIN
EQ	EQUIPMENT	SDMH	STORM DRAIN MANHOLE
EW	EACH WAY	SHT	SHEET
(E)	EXISTING	S.L.D.	SEE LANDSCAPE DRAWINGS
FC	FACE OF CURB	SPEC	SPECIFICATION
FF	FINISHED FLOOR	SS	SANITARY SEWER
FG	FINISHED GRADE	SSCO	SANITARY SEWER CLEANOUT
FH	FIRE HYDRANT	SSMH	SANITARY SEWER MANHOLE
FL	FLOW LINE	ST	STREET
FS	FINISHED SURFACE	STA	STATION
G	GAS	STD	STANDARD
GA	GAGE OR GAUGE	STRUCT	STRUCTURAL
GB	GRADE BREAK	T	TELEPHONE
HDPE	HIGH DENSITY CORRUGATED	TC	TOP OF CURB
HORIZ	HORIZONTAL	TEMP	TEMPORARY
HI PT	HIGH POINT	TP	TOP OF PAVEMENT
H&T	HUB & TACK	TW/FG	TOP OF WALL/FINISH GRADE
ID	INSIDE DIAMETER	TYP	TYPICAL
INV	INVERT ELEVATION	VC	VERTICAL CURVE
JB	JUNCTION BOX	VCP	VITRIFIED CLAY PIPE
JT	JOINT TRENCH	VERT	VERTICAL
JP	JOINT UTILITY POLE	W/	WITH
L	LENGTH	W, WL	WATER LINE
LNDD	LANDING	WM	WATER METER
		WWF	WELDED WIRE FABRIC

## SCHEMATIC RETAINING WALL NOTES

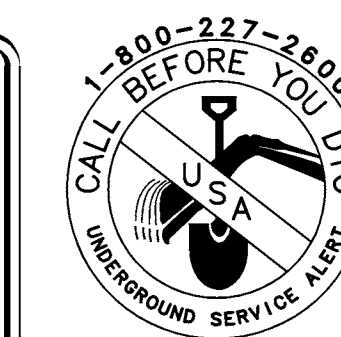
1. TW/FG REPRESENTS FINISHED EARTHEN GRADE OR PAVEMENT ELEVATION AT TOP OF WALL. NOT ACTUAL TOP OF WALL MATERIAL. BW/FG REPRESENTS FINISH EARTHEN GRADE OR PAVEMENT ELEVATION AT BOTTOM OF WALL NOT INCLUDING FILL FOUNDATION. GRADES INDICATED ON THESE PLANS REFER TO THE FINISHED GRADES ADJACENT TO THE RETAINING WALL, NOT INCLUDING FOOTING, FREEBOARD, ETC.
2. DIMENSIONS SHOWN IN BRACKETS SHOWN AS [X.X'] DENOTE THE EFFECTIVE WALL HEIGHT ONLY. THE ACTUAL WALL HEIGHT AND DEPTH MAY DIFFER DUE TO CONSTRUCTION REQUIREMENTS.
3. REFER TO SPECIFIC WALL CONSTRUCTION DETAIL FOR STRUCTURAL ELEMENTS, FREEBOARD, AND EMBEDMENT.
4. REFER TO ARCHITECTURAL, LANDSCAPE ARCHITECTURE, AND/OR STRUCTURAL PLANS FOR DETAILS, WALL ELEVATIONS, SUBDRAINAGE, WATERPROOFING, FINISHES, COLORS, STEEL REINFORCING, MATERIALS, ETC. PROVIDE CLIPS OR OTHER MEANS OF SECURING FINISH MATERIALS AS NECESSARY (WET SET INTO THE WALL).
5. ALL RETAINING WALLS SHOULD HAVE A BACK-OF-WALL SUB-SURFACE DRAINAGE SYSTEM INCLUDING WEEPHOLES TO PREVENT HYDROSTATIC PRESSURE.
6. SEE DETAIL SHEET FOR SPECIFIC INFORMATION.
7. PROVIDE GUARDRAIL (WHERE APPLICABLE AND DESIGNED BY OTHERS) AS REQUIRED FOR GRADE SEPARATION OF 30 INCHES OR MORE MEASURED 5' HORIZONTALLY FROM FACE OF WALL, PER CBC.



SCHEMATIC RETAINING WALL  
PLEASE NOTE THE DETAIL ABOVE IS SCHEMATIC ONLY AND DOES NOT PERTAIN TO ANY SPECIFIC RETAINING WALL LOCATED ON-SITE.

\* BUILDING PAD NOTE:  
ADJUST PAD LEVEL AS REQUIRED. REFER TO STRUCTURAL PLANS FOR SLAB SECTION OR CRAWL SPACE DEPTH TO ESTABLISH PAD LEVEL.

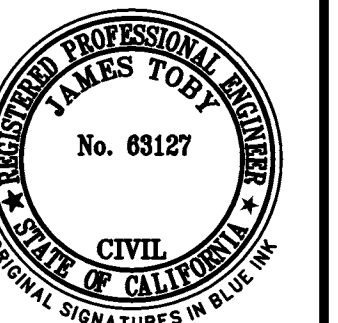
**NOTE:**  
FOR CONSTRUCTION STAKING SCHEDULING OR QUOTATIONS PLEASE CONTACT ALEX ABAYA AT LEA & BRAZE ENGINEERING (510)887-4086 EXT 116.  
aabaya@leabraz.com



PLN16-0067  
EXHIBIT EE  
June 15, 2017

## SHEET INDEX

C-1.0	TITLE SHEET
C-2.0	GRADING & DRAINAGE PLAN
C-2.1	GRADING & DRAINAGE PLAN
C-2.2	SECTIONS
C-2.3	SECTIONS
C-2.4	SECTIONS
C-3.0	UTILITY PLAN
C-3.1	UTILITY PLAN
C-4.0	SIGNAGE & STRIPING PLAN
HYD-1	STORMWATER MANAGEMENT PLAN
HYD-2	STORMWATER MANAGEMENT PLAN



LEA & BRAZE ENGINEERING, INC.  
CIVIL ENGINEERS • LAND SURVEYORS  
SACRAMENTO REGION  
1001 J STREET, SUITE # 300  
ROSELAKE, CALIFORNIA 95661  
(P) (916)966-1338  
(F) (916)797-7363  
WWW.LEABRAZE.COM

SAN LEANDRO TECH CAMPUS  
RESIDENTIAL - TOD  
SAN LEANDRO, CALIFORNIA  
ALAMEDA COUNTY  
APN: 075-0047-057-02

PLANNED DEVELOPMENT PLN2013-00045

TITLE SHEET

REVISIONS	BY
-	-
-	-
-	-
-	-
-	-
-	-
-	-
-	-
-	-
-	-

JOB NO: 2151095  
DATE: 04-25-17  
SCALE: AS NOTED  
DESIGN BY: CP/MG  
DRAWN BY: MG  
SHEET NO:

**C-1.0**  
1 OF 11 SHEETS