

# Urban Greenway and Creek Walk

The urban Greenway is a unique regional project that provides a north-south bicycle and pedestrian connection to the 625,000 residents of Oakland, San Leandro and Hayward. The Creek Walk, an east-west pedestrian connection, bisects the Greenway, further expanding this network of active open space. These complimentary projects through densely populated neighborhoods, schools, retail areas, community centers, industrial areas and transit hubs, provide alternative transportation, clean up blighted areas and offer much needed recreational opportunities.

## Greenway Project Overview

The East Bay Greenway is planned to be a well-lit, beautifully landscaped pedestrian and bicycle path connecting five BART stations. With play areas and other community amenities, the currently neglected space will be transformed into a community asset that brings people together in healthier, safer, and stronger communities.



The twelve-mile East Bay Greenway passes through four jurisdictions: Oakland, San Leandro, unincorporated Alameda County, and Hayward. It will run along and adjacent to the BART elevated "A" Line, parallel to the San Francisco Bay Trail and the Ridge Trail. The Greenway will serve as an urban counterpart to these existing recreational routes.

In order to make the Greenway comfortable and inviting for inexperienced and/or beginning cyclists, the Greenway is designed as a separated multi-use pathway (Class I bike path) for as much of the route as possible. Along streets with high levels of traffic where space for a separated path is inadequate, the plan proposes Class II bike lanes. On residential streets with less traffic, the plan proposes installing Class III bicycle boulevards. The Plan proposes a safe and attractive pedestrian walkway along the entire twelve-mile route.



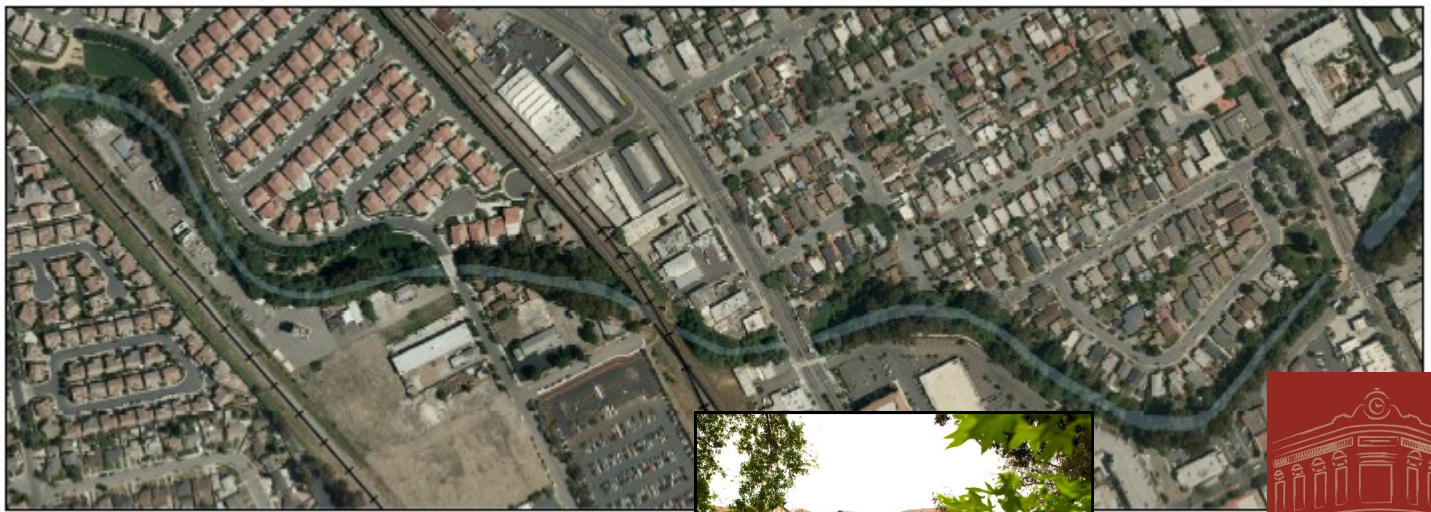
## Greenway Funding Request

Probable construction costs for the 3.5 mile San Leandro section of the East Bay Greenway is approximately \$12 million. The cost of the entire 12-mile long project is approximately \$38 million, although could be reduced in an acquisition scheme involving a land swap.



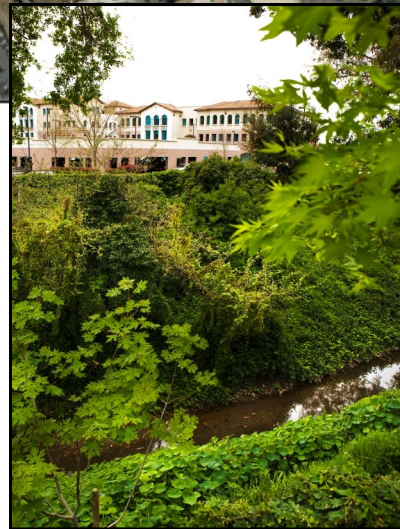
## Creek Walk Project Overview

The City of San Leandro is seeking a grant to design an urban creek walk and develop an implementation strategy for the creation of the walk along a three quarter mile stretch of San Leandro Creek from East 14<sup>th</sup> Street in Downtown San Leandro to the Southern Pacific Railroad. San Leandro Creek runs four miles East to West, through Downtown San Leandro, and there is little public access. An urban creek walk promotes healthy living, supports economic development downtown, and restores access to the creek reconnecting the community with our waterways.



The goals of the creek walk include:

- ◇ Public access to the creek
- ◇ Restoration of the creek banks and bed
- ◇ Increased open space for the community
- ◇ Opportunities for walking and healthy activity
- ◇ Added attraction and access to Downtown
- ◇ Creation of a natural setting in an urban environment where the community can connect to nature and explore



The Creekside Plaza 250,000 square foot office development included the creation of the first 100 foot stretch of creek walk.



## Creek Walk Funding Request

A grant would allow the City to work with the community, Friends of San Leandro Creek and landowners along the creek (the City currently owns approximately half of the land) to create a design and implementation plan; determine the costs; explore partnerships and other funding; and develop a sustainable maintenance and operation plan.

