

The background features a dark blue gradient with a grid of glowing orange and white digital numbers and symbols. Overlaid on this are several semi-transparent white circular patterns, including concentric circles and arcs, some resembling clock faces or data paths.

# FINANCE DEPARTMENT UPDATE

CITY COUNCIL

FEBRUARY 21, 2022

# OBJECTIVES

- An overview of city government finance
  - Budget
  - Funds
  - Revenue
  - Expenditures
- Tools to support finance work for the city
- Supplemental Plans
- Upcoming workload

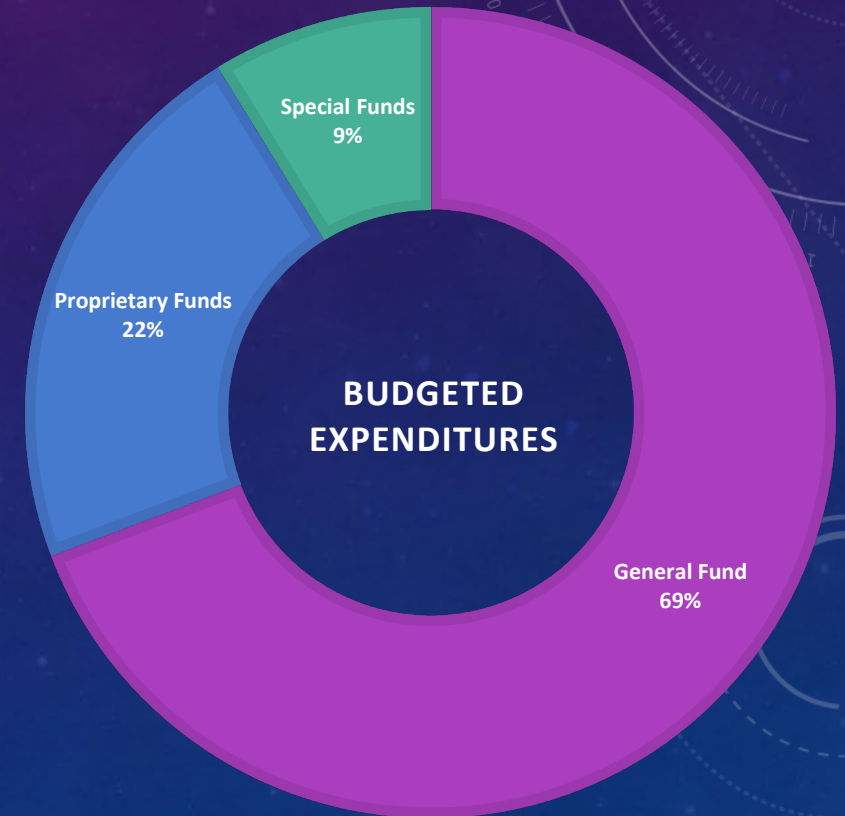
# BUDGET

- Most important policy document of any governmental organization
- Priorities and how to fund them
- Two-year budgeting with mid-cycle updates
- Must be legally balanced



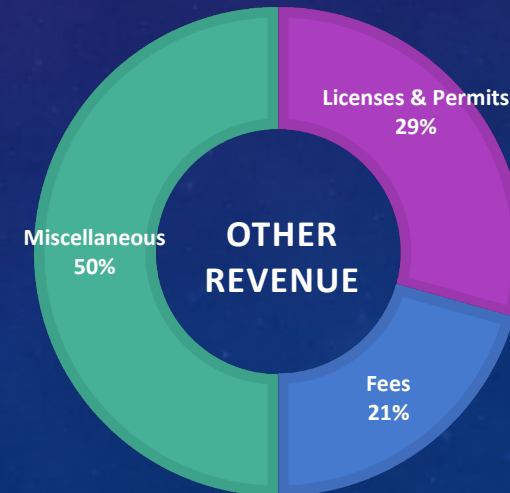
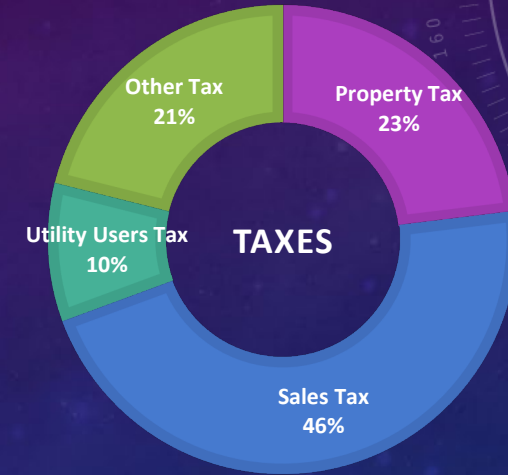
# FUNDS

- General Fund: \$150.7 M
- Proprietary Funds: \$47.8 M
  - Enterprise:
    - Water Pollution Control Plant, Shoreline
  - Internal Service
    - Facilities Maintenance, Information Technology, Insurance Services, Equipment Maintenance
- Special Funds: \$19.1 M
  - Parking, Asset Seizure, Transportation, Grants, Capital Improvement
- Total Funds: \$217.6 M Budgeted



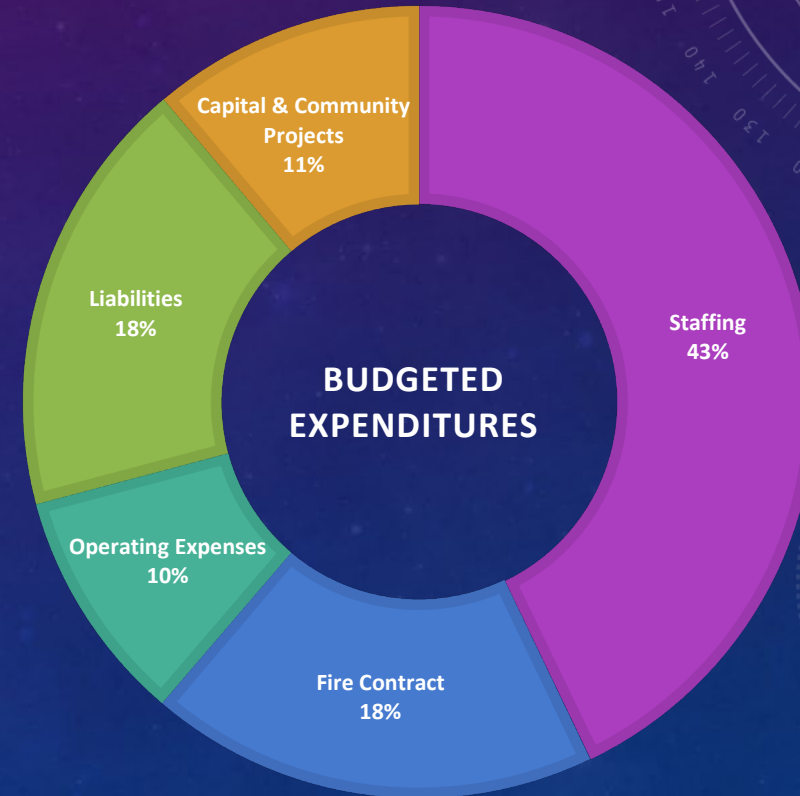
# GENERAL FUND REVENUE

- Taxes: \$120.9 M
  - Property Tax: \$27.9 M
  - Sales Tax: \$56.2 M
  - Utility Users Tax: \$11.5 M
  - Other Tax \$25.5 M
    - Property Transfer, Business License, Franchise, Cannabis
- Other \$12.6 M
  - Licenses & Permits \$3.7 M
  - Fees \$2.6 M
    - Planning, Police, Recreation, Library
  - Miscellaneous \$6.3 M
    - Interest, Rent, Intergovernmental, Interfund



# GENERAL FUND EXPENDITURES

- Ongoing \$133.9
  - Staffing \$64.6 M
  - Fire Contract: \$27.7 M
  - Operating Expenses \$14.5 M
  - Liabilities \$27.1 M
    - Debt Service \$6.6 M
    - Pensions \$19.5 M
    - Retiree health \$1.0 M
- One-Time \$16.8
  - Capital Needs, Community Projects & One-time Payments



# TOOLS

- Long-Term Forecast
  - Evaluate current and future fiscal conditions
  - Identify future trends
- Staffing Forecast
  - Analyze current staffing cost obligations
  - Calculates current and future anticipated expenditures
- Pension Forecast
  - Reviews current and future obligations
  - Provides options for cost mitigation



# SUPPLEMENTAL PLANS

- Capital Improvement Plan
  - Focuses on assets and their maintenance/preservation
  - Identifies projects and funding to
- Technology Plan
  - Reviews all technology needs to provide city services
  - Sets forth a schedule for upgrades/replacement
- Fleet Replacement Plan
  - Schedule for replacement







# UPCOMING WORKLOAD

- Budget for FYs 24 & 25
- Identify funding options to support city services and infrastructure needs
- Review pension liabilities and identify strategies to reduce obligations
- Implement financial planning and communication tools

The background features a dark blue gradient with a field of small white stars. Overlaid on this are several technical diagrams: a circular gauge with a scale from 0 to 210 and an arrow pointing to approximately 190; a circular diagram with concentric rings and arrows indicating a clockwise cycle; and a dashed circular arrow pointing to the left. The word "QUESTIONS?" is centered in a white, serif font.

QUESTIONS?