

Clean and Healthy Bay Initiative

June 2016





Photo by Vivian Reed



Photo by Dan Sullivan



Photo by Dan Sullivan

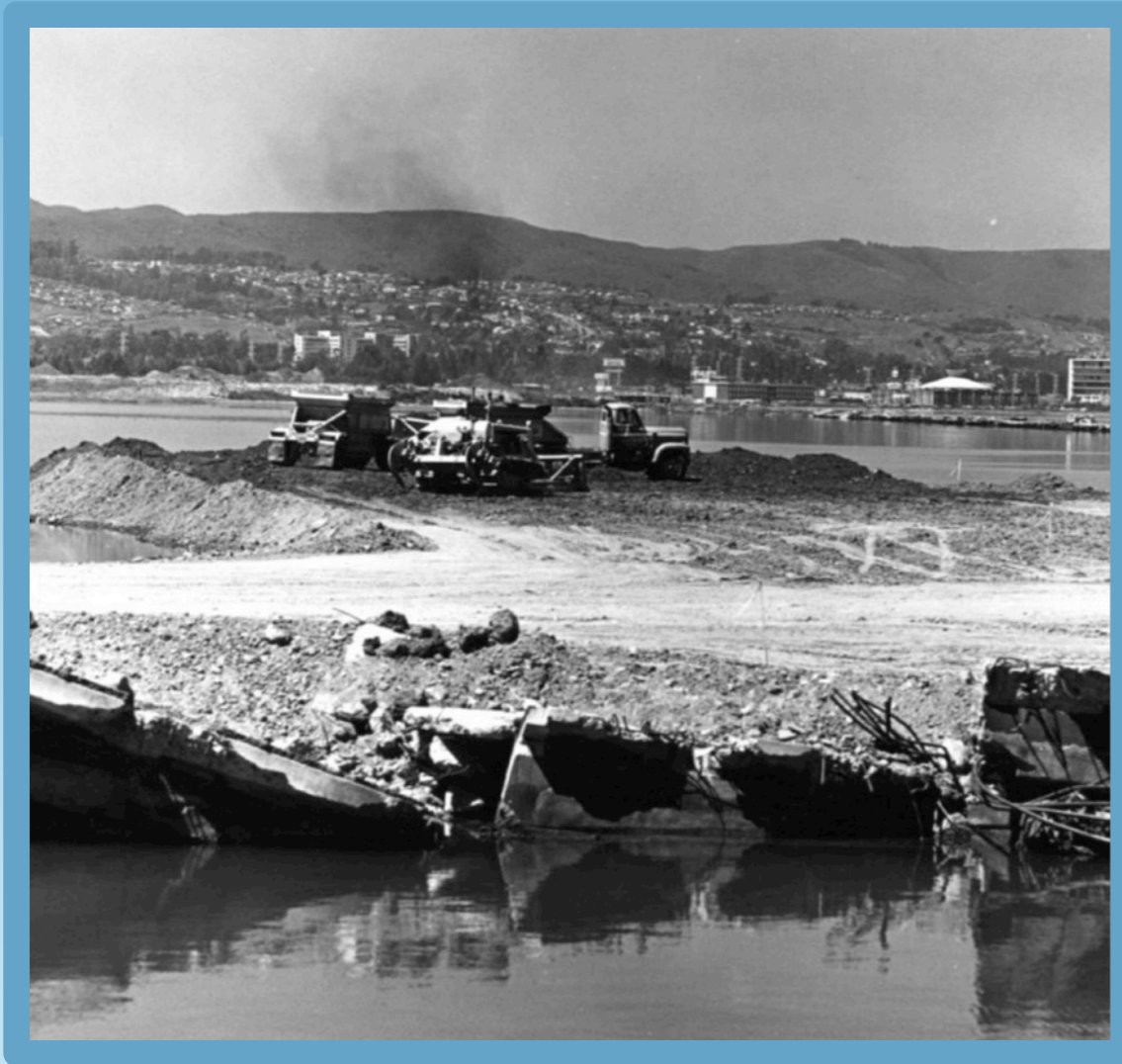


Photo by Vivian Reed



150 years of urbanization has altered San Francisco Bay

We have had a massive impact on the Bay over the last century



We've filled thousands of acres



We've dumped garbage

Growing threat: Climate Change



IMPACTS OF RISING SEAS ON SAN FRANCISCO BAY

WHAT'S AT RISK?



In the Bay Area, experts project that climate change will increase tide levels 16 inches by 2050, and 55 inches by the end of the century. These changes will have dramatic impacts across our region.

POTENTIAL BAY AREA IMPACT

-  **SCHOOL AND HEALTHCARE FACILITIES**
89 threatened
-  **ROADS AND HIGHWAYS**
1780 miles under water
-  **HOMES**
270,000 renters and homeowners displaced
-  **WETLAND HABITAT**
3,100 acres lost
-  **TOTAL COST**
\$50 billion

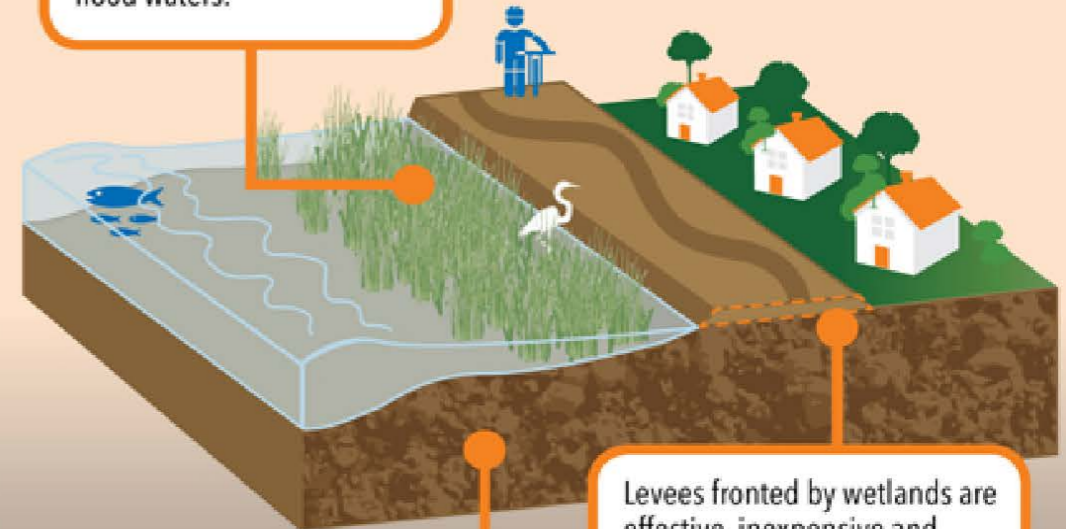
Source: *The Impacts of Sea Level Rise on the San Francisco Bay*, Pacific Institute 2012

KEY

-  Vulnerable to inundation with predicted sea level rise
-  Baylands and wetlands that could provide protection if restored/maintained



Healthy wetlands function as natural sponges that trap and slowly release rain and flood waters.



Wetlands can adapt to sea level rise by accumulating sediment over time.

Levees fronted by wetlands are effective, inexpensive and provide public access, as well as flood protection.

Information from USGS, EPA and Wetlands International

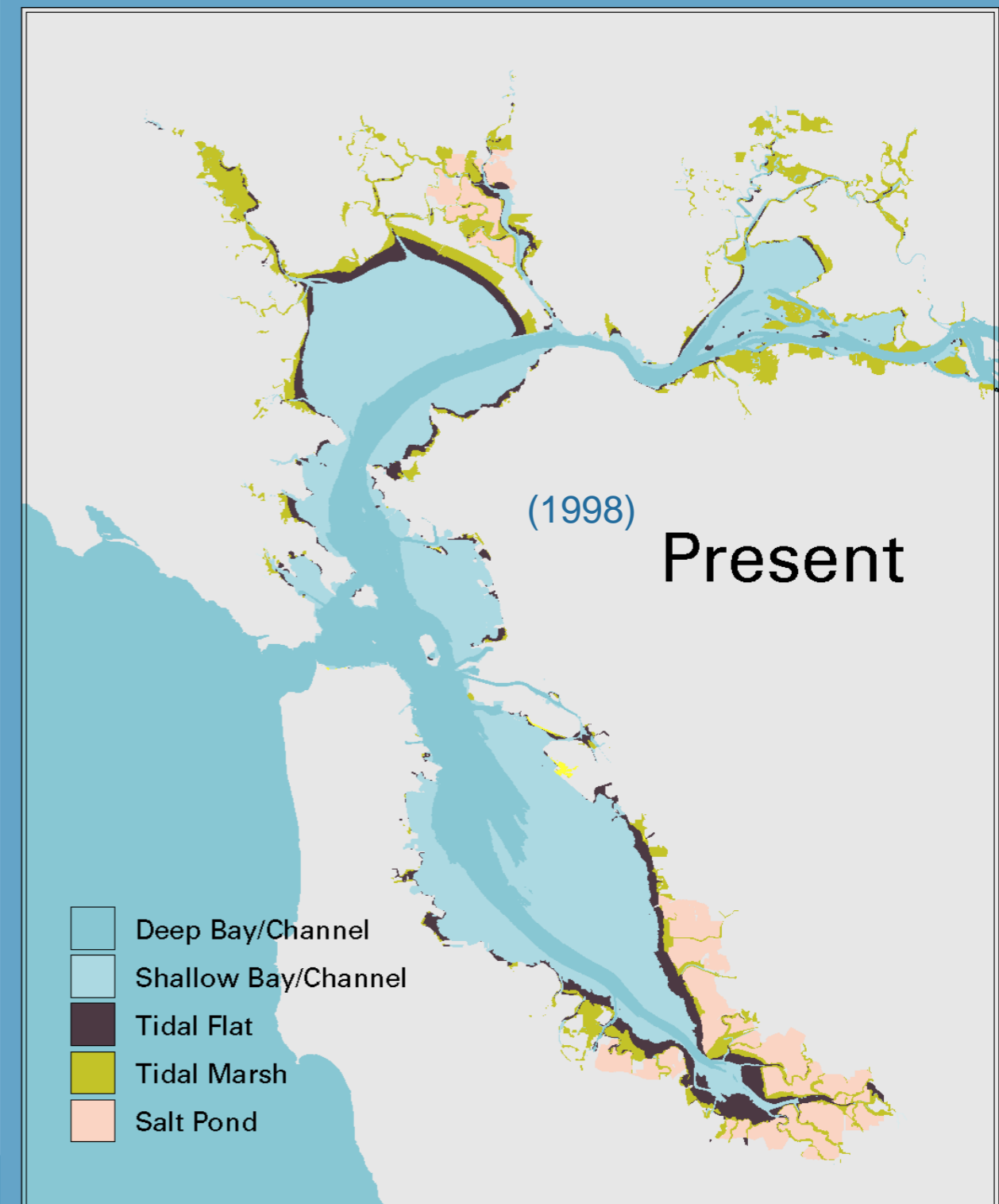
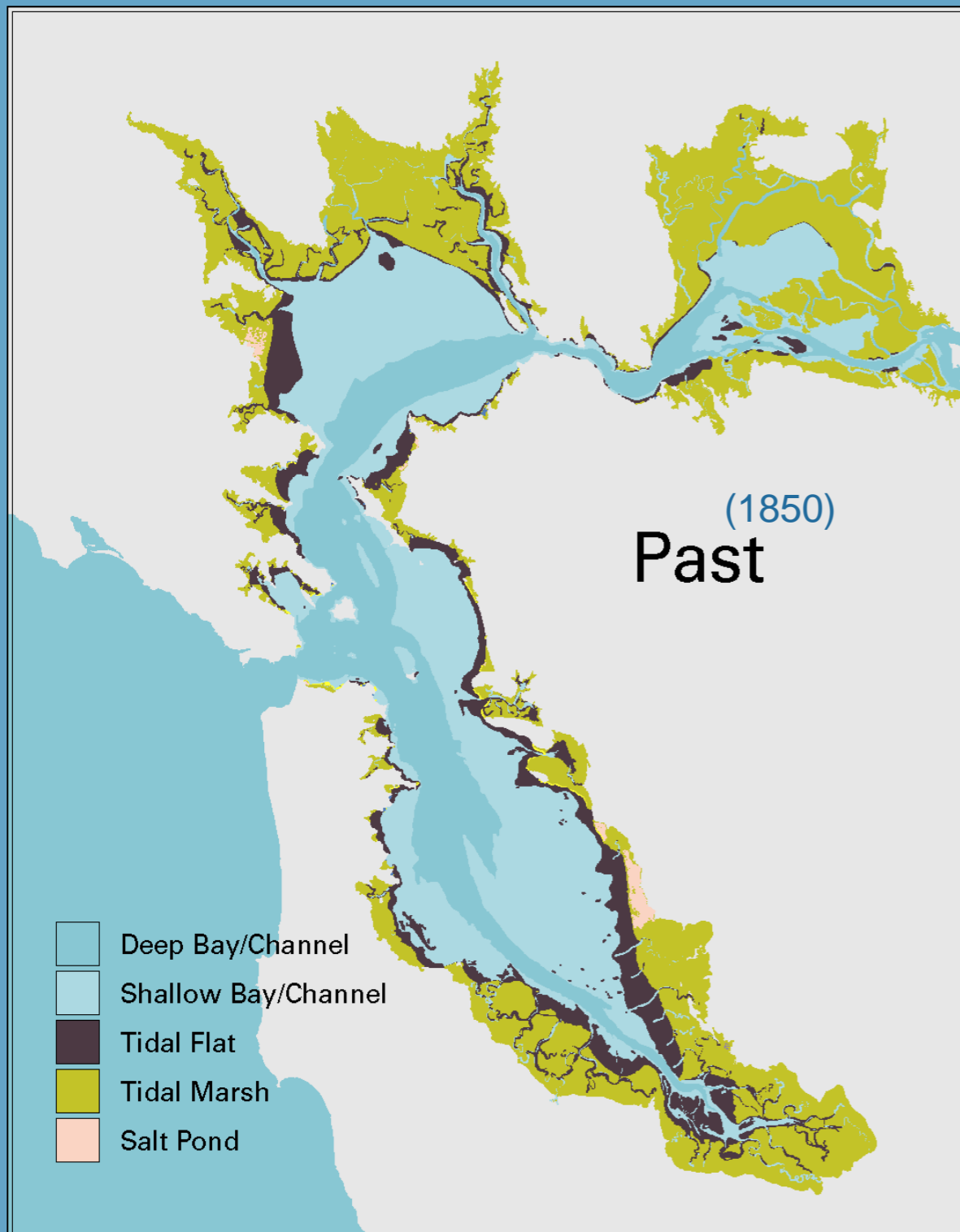
RESTORED WETLANDS PROTECT US

Wetland restoration is a cost-effective solution to rising tides in San Francisco Bay, serving as a buffer against severe storms and flooding. By restoring wetlands in the Bay, we can protect our homes and keep our communities safe.

Take action online at savesfbay.org/at-risk

SAVE THE BAY

Tidal marsh habitat for fish and birds has been reduced dramatically

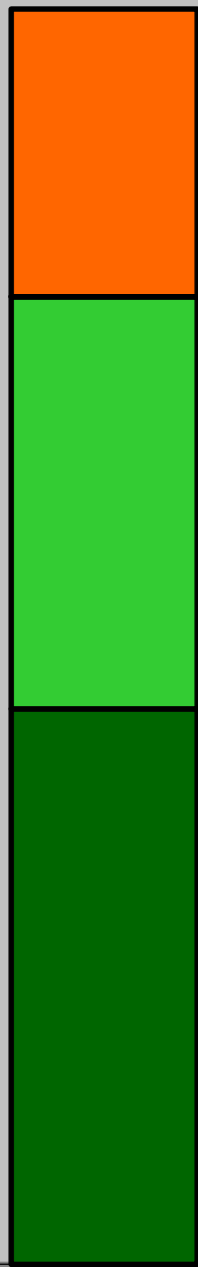


IMPORTANCE OF TIDAL MARSH

- Provide Habitat for Fish & Wildlife
 - Filter Out Pollution
- Flood Prevention & Sea Level Rise Mitigation
 - Open Space & Recreation Opportunities
 - Enhance Quality of Life & Economy

100,000 Acres of Tidal Marsh Needed for a Healthy Bay

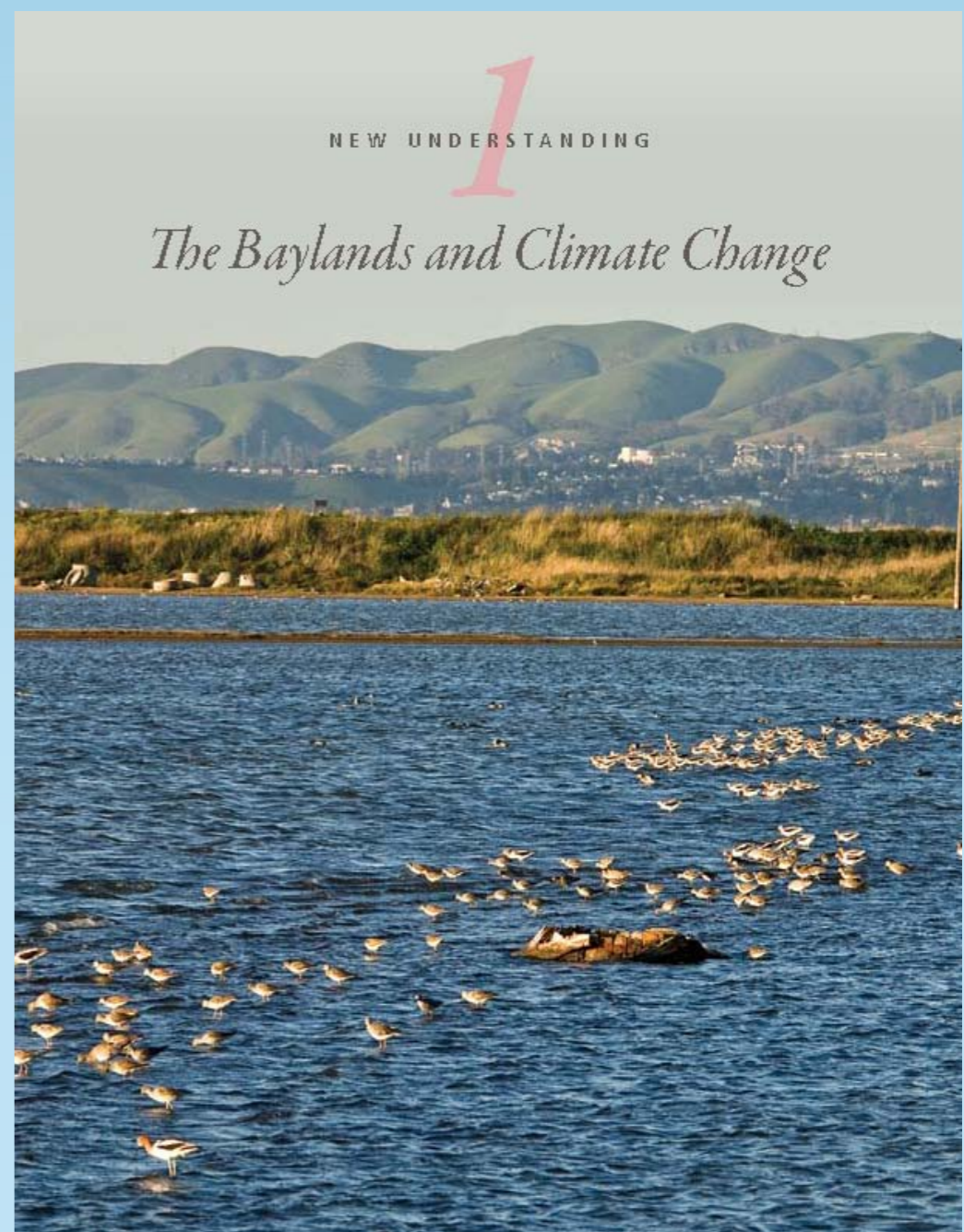
100,000



22,000 acres to be secured

35,000+ acres secured for restoration

44,000 acres today



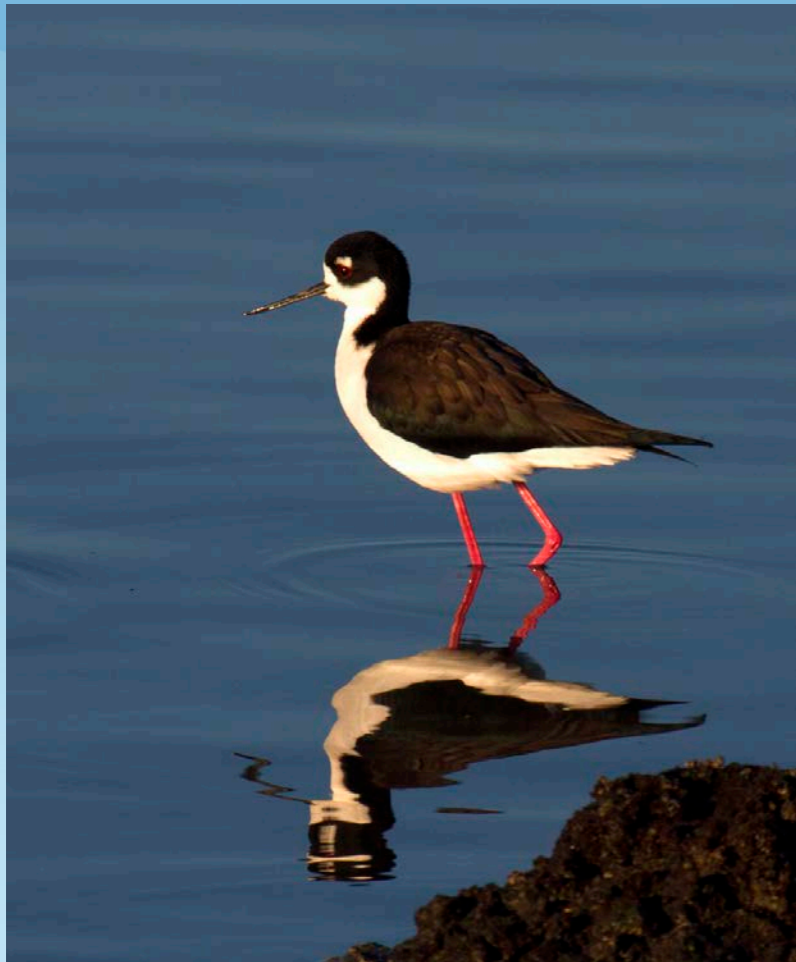
What is the Restoration Authority?

Mission: To raise and allocate resources for the restoration, enhancement, protection, and enjoyment of wetlands and wildlife habitat in the San Francisco Bay and along its shoreline.

- The San Francisco Bay Restoration Authority was created by Save The Bay and others through 2008 legislation.
- Its mandate is to propose new public funding mechanisms to voters for Bay marsh restoration; then provide grants to accelerate wetland restoration, flood protection, and public access to Bay.
- Governing Board comprised of elected officials from each quadrant of the Bay Area; Advisory Board represents many community interests.
- It currently has no funding to carry out its important mission.



Clean and Healthy Bay Ballot Measure: Regional Parcel Tax for Restoration



- June 2016 ballot measure to accelerate Bay wetlands restoration
- \$12/parcel/year for 20 years, would generate ~\$500 million for restoration projects around the Bay
- Dec 2015 tracking poll: Strong majority of nine-county Bay Area voters are supportive; needs 2/3 support in all nine counties, cumulatively, to pass
- Complete restoration (100,000 acres) requires ~\$2 billion; aim is to use passage of parcel tax to leverage additional state and federal funds



Clean and Healthy Bay Ballot Measure: Regional Parcel Tax for Restoration

Parcel tax revenues must be used to support:

- Restoring vital fish, bird and wildlife habitat.
- Improving water quality and reducing pollution and toxins.
- Protecting shoreline communities against flooding from severe storms and sea level rise.
- Increasing shoreline access for public enjoyment.





Examples of Projects Anticipated to be Eligible For Funding:

- Hayward Shoreline (Alameda)
- Chelsea Wetlands (Contra Costa)
- Bel Marin Keys (Marin)
- Edgerly Island (Napa)
- Crissy Field (San Francisco)
- East Palo Alto Shoreline (San Mateo)
- San Jose Bay Trail (Santa Clara)
- Benicia Shoreline (Solano)
- Skaggs Island (Sonoma)

Next Steps

- Measure transmitted to all nine Bay Area county registrars; going through each Board of Supervisors for pro forma action to consolidate election
- Santa Clara County, the lead county by 2010 population, is preparing ballot materials and distributing to other registrars
- Separate campaign effort
- Engaging public and stakeholders in conversations about this proposal



www.sfbayrestore.org



San Francisco Bay Restoration Authority



[Governing Board](#)

[Advisory Committee](#)

[Meetings](#)

[Documents](#)

[FAQ](#)



Welcome

The **San Francisco Bay Restoration Authority** is a regional government agency charged with raising and allocating resources for the restoration, enhancement, protection, and enjoyment of wetlands and wildlife habitat in the San Francisco Bay and along its shoreline. The Authority was created by the California legislature in 2008 with the enactment of AB 2954 (Lieber). On January 13, 2016, the **Authority's Board** unanimously voted to place a funding measure on the **June 7, 2016 ballot** in the nine-county Bay Area to generate funds to protect and restore San Francisco Bay. Read the **Press Release here**.



Questions?



www.sfbayrestore.org