

# East 14th Street Triangle and Utility Undergrounding Project

(E. 14th St. from Thornton St. to 150th Ave.)

---

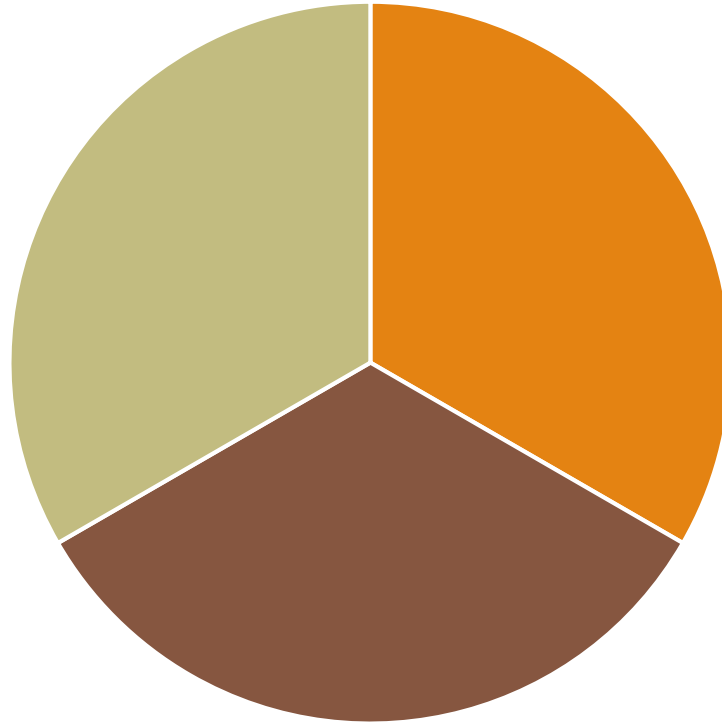
CITY COUNCIL: JULY 17, 2017

# East 14<sup>th</sup> Street Triangle and Utility UG

---

3 components

Transportation  
Utility Undergrounding  
Entryway / Monument



Council Goals:

Maintain and enhance San Leandro's infrastructure

Support and implement programs, activities and strengthen communication that enhances the quality of life and wellness, celebrates the arts and diversity and promotes civic pride

# A Transportation Project

Goal: Relieve congestion SB East 14<sup>th</sup> St and EB Hesperian

1997: Traffic Study by Rajappan and Meyers

2002: Partial funding via Measure B grant

2009: Purchase of triangle parcel

2011: Quality Tune up relocated

2012: Triangle parcel cleared and remediated



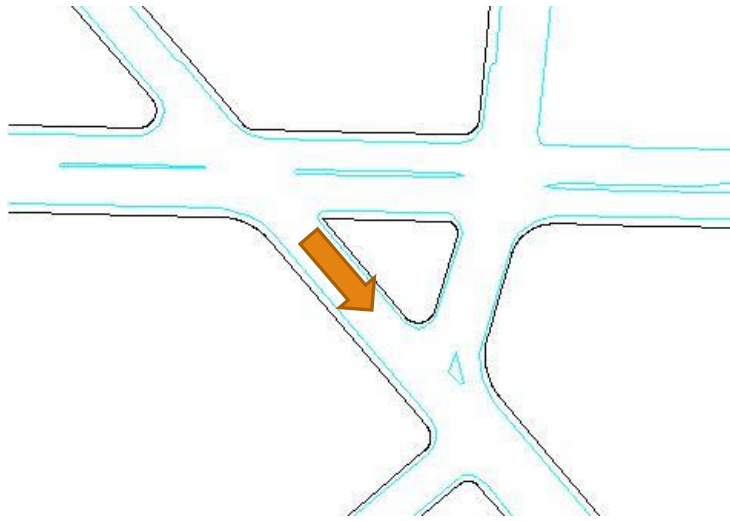
# A Transportation Project

---

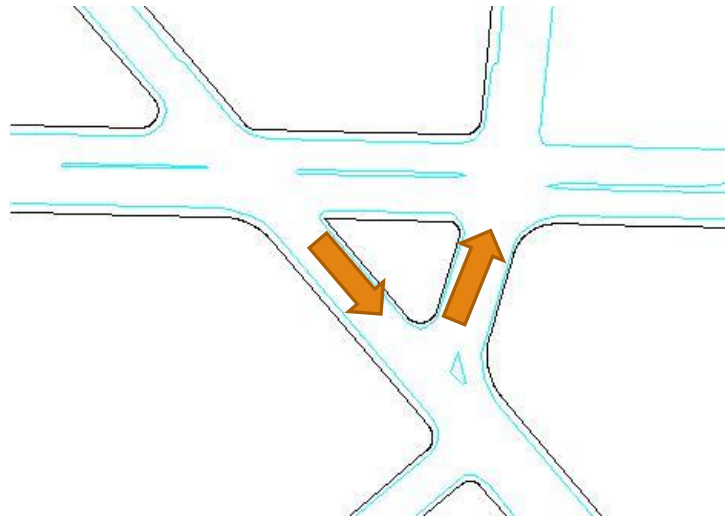
6 Options evaluated in 1997:

The first 3 resulted in reduced capacity

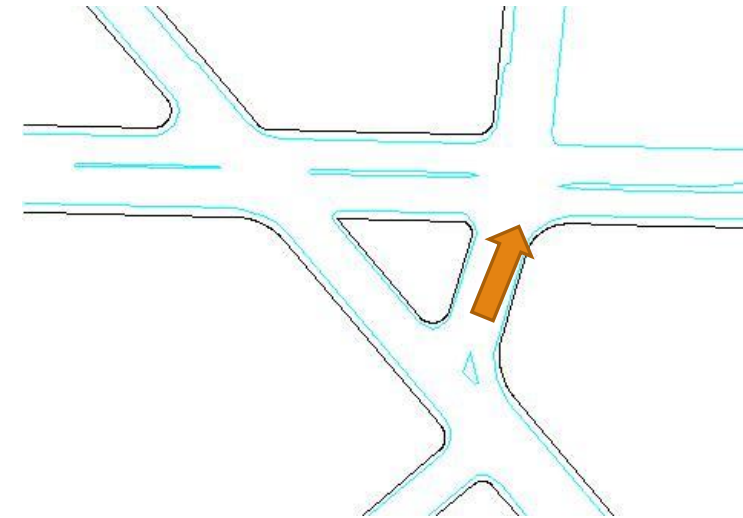
One-Way Hesperian leg



One-Way both 150<sup>th</sup> and Hesperian legs



One-Way 150<sup>th</sup> leg

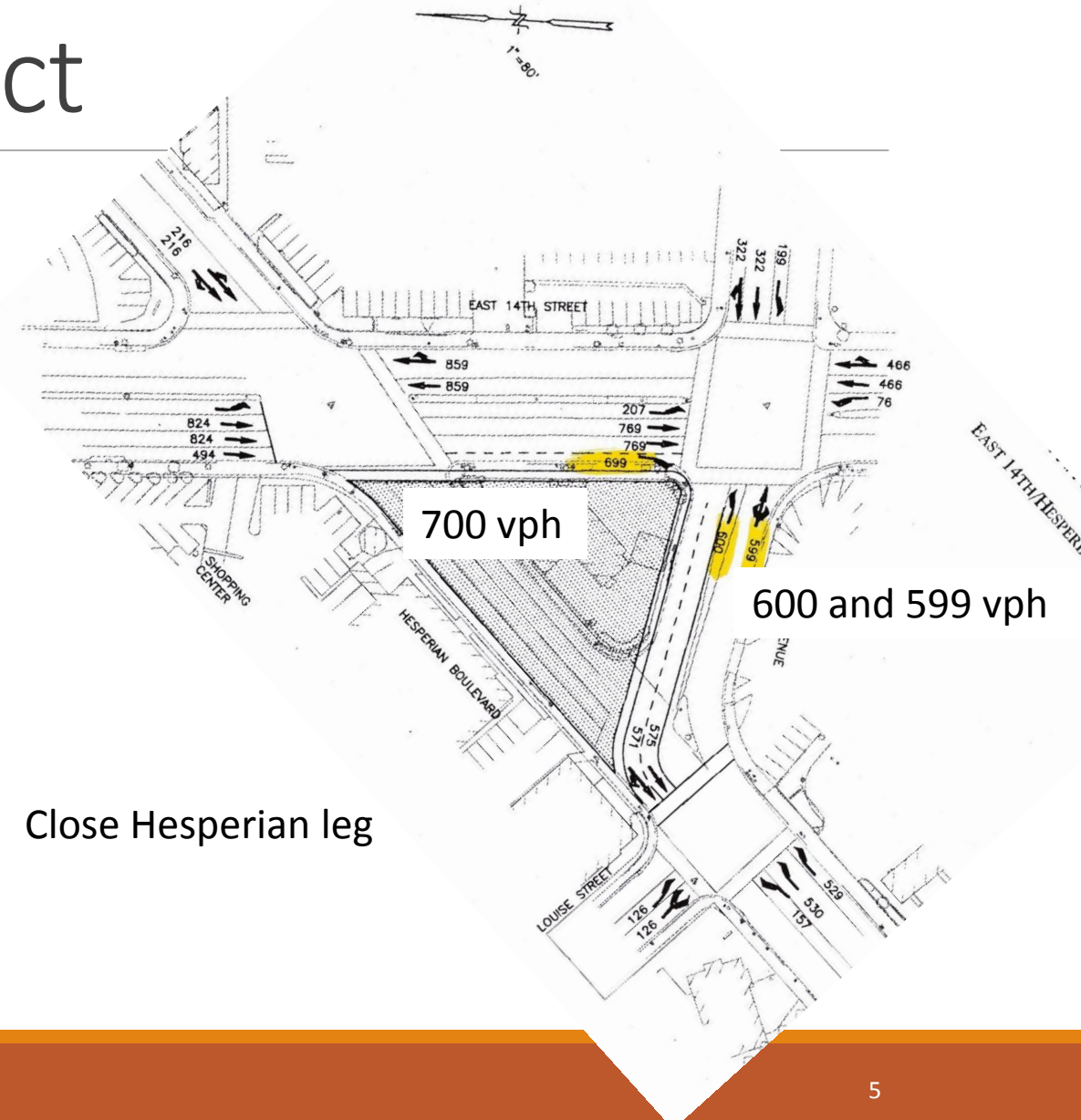


# A Transportation Project

6 Options evaluated in 1997:

Close Hesperian Leg:

This option shows turning movement volume (highlighted) that required additional lanes.



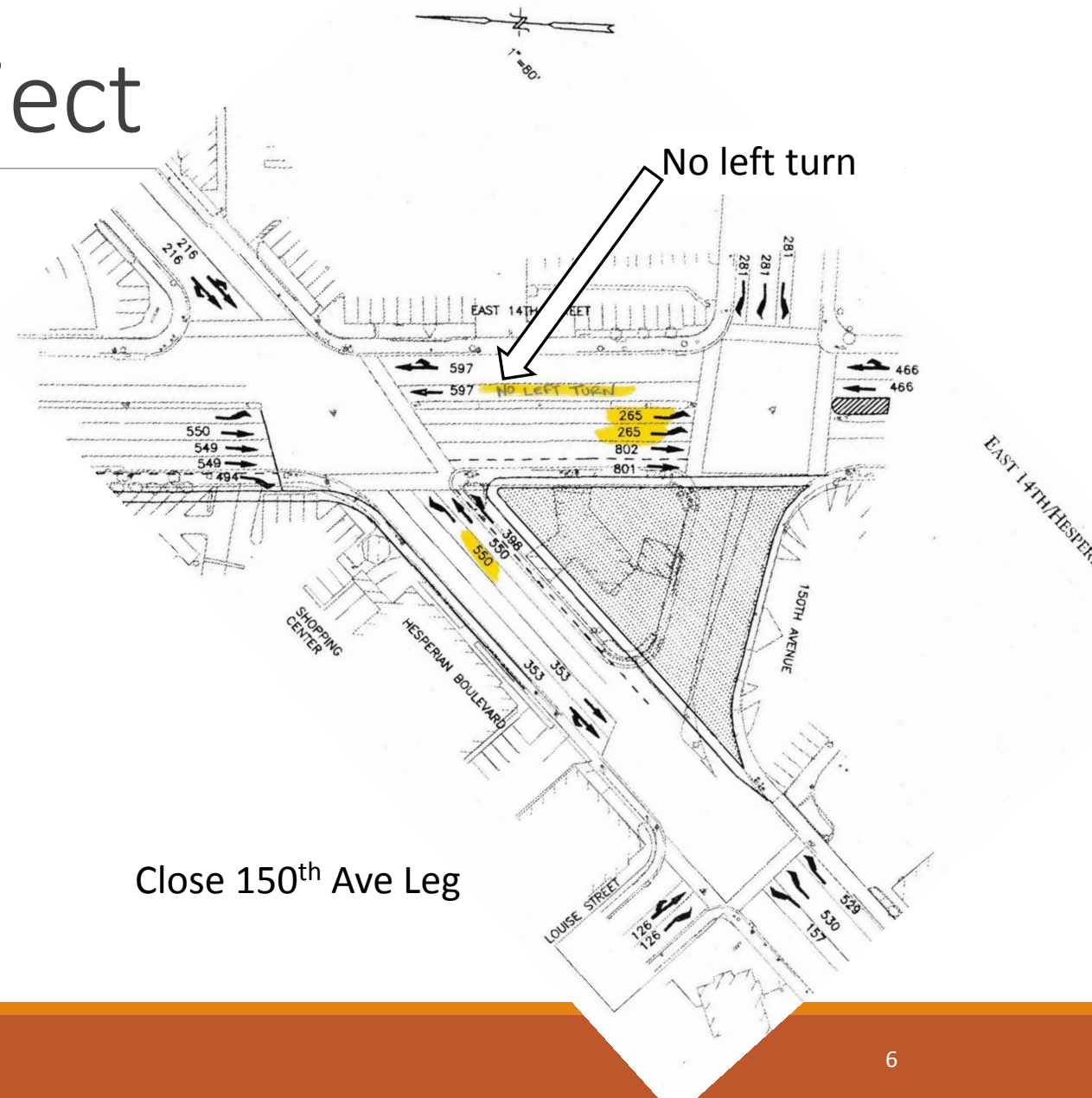
# A Transportation Project

6 Options evaluated in 1997:

Close 150<sup>th</sup> Avenue Leg:




Due to capacity issues this option shows no left turn from northbound East 14<sup>th</sup> to Hesperian.

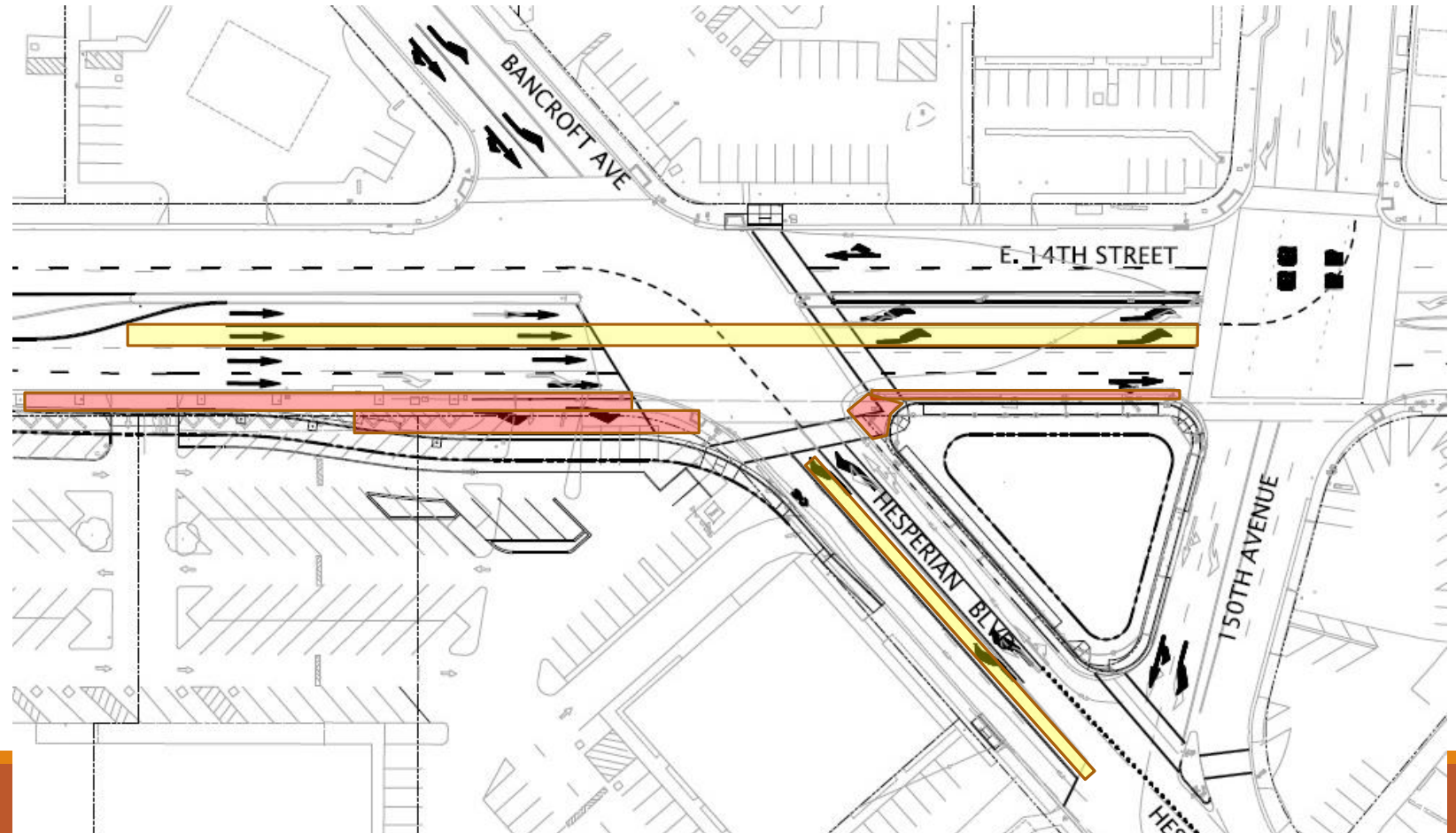
As a result, traffic from 580 destined for Hesperian is diverted to Fairmont. It becomes more difficult to reach Hesperian Blvd between East 14<sup>th</sup> and Fairmont



# A Transportation Project

Preferred Alternative:  
Additional turn lanes

-  Add 2nd EB left turn lane  
East 14<sup>th</sup> Street at 150<sup>th</sup>  
Avenue
-  Install 2<sup>nd</sup> NB left turn lane  
Hesperian Blvd at East 14<sup>th</sup>  
St
-  Road widening



# A Utility Project

---



Underground Utility Project completed 2012:  
0.5 miles  
\$0.5M City  
\$2M PG&E (Rule 20A)

Underground Utility Project planned for 2020:  
2 miles  
\$3M City  
\$8M PG&E (Rule 20A)



# A Utility Project

---



# An Entryway Project

---

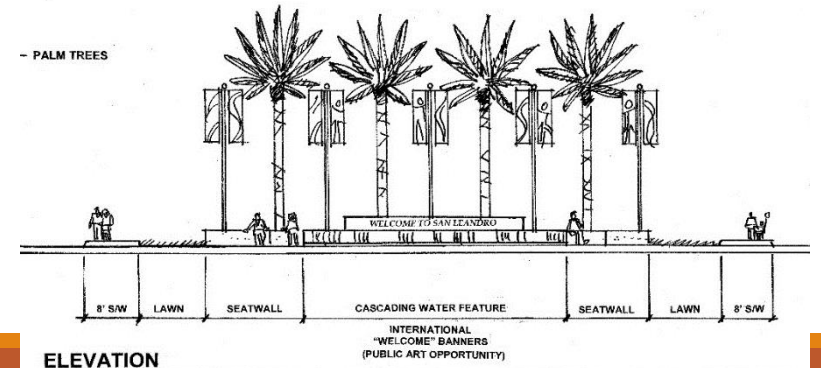
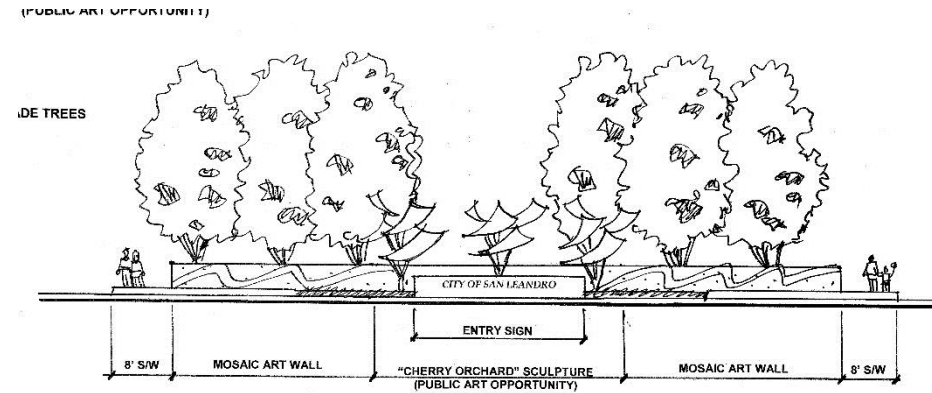
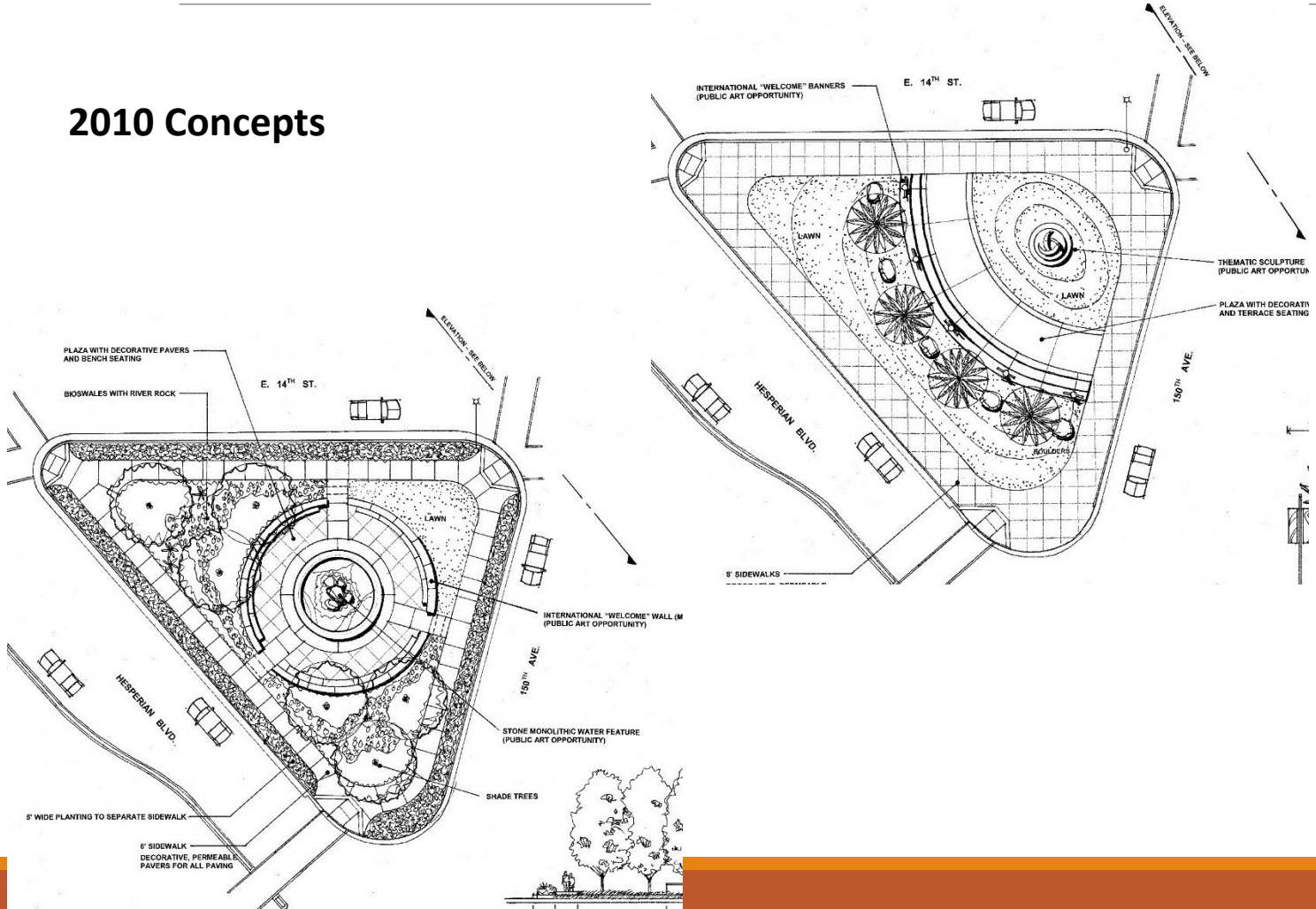
2009: Purchased  
triangle parcel

2010: Entryway  
Concepts developed by  
John Cahalan –  
Landscape Architect



# An Entryway Project

## 2010 Concepts



ELEVATION

# An Entryway Project

## 2010 Preferred Option

Includes:

Landscaping

Irrigation

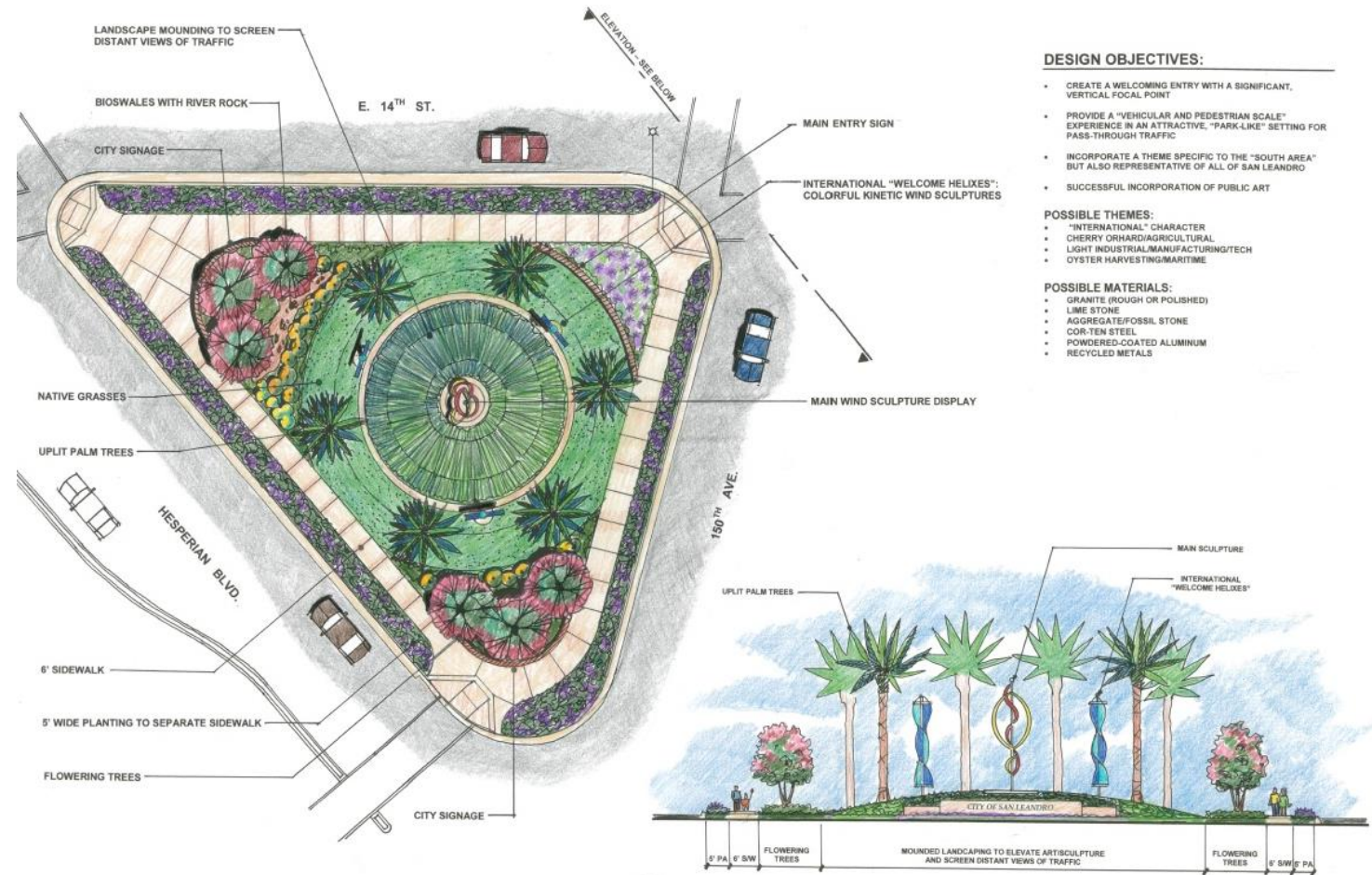
Art

Monument

Walkways


Seating

Will revisit during design

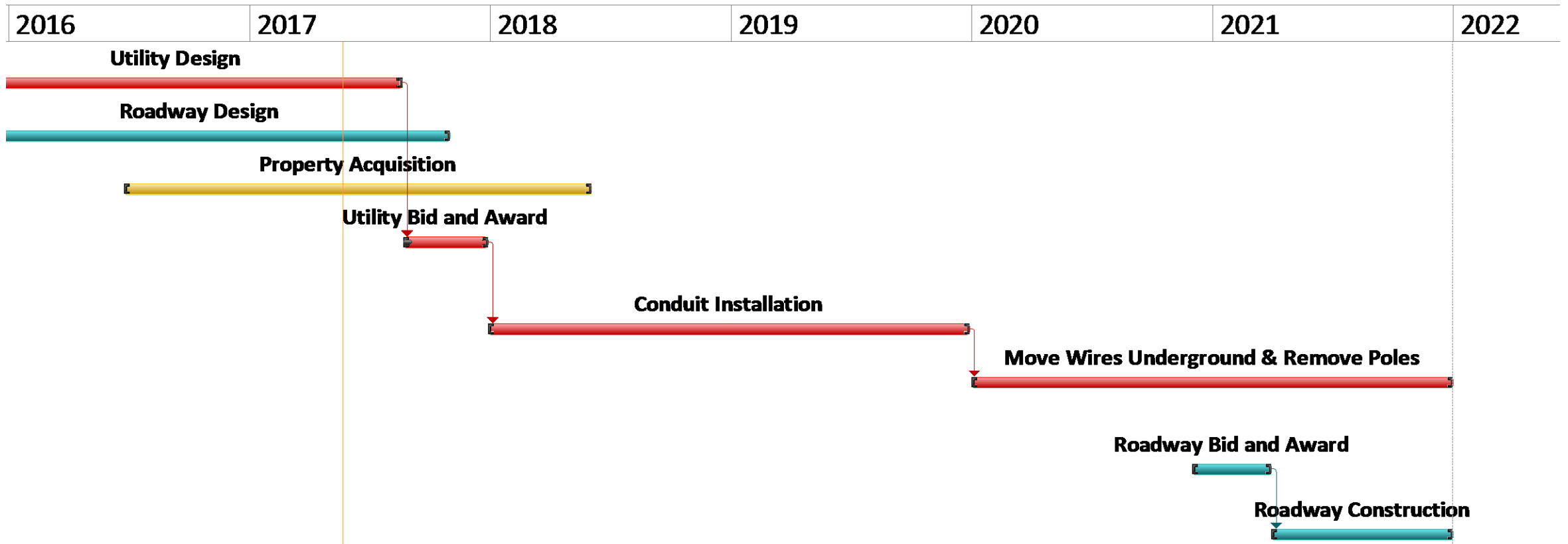


# Funding

---

Use	Source	Amount (\$M)	
Transportation	Measure B grant 2002	3.2	
	General Fund	0.4	
	Redevelopment Funds	0.8	
	Unfunded	1.9	 Shortfall: Seeking Measure BB grant
Utility	Rule 20A	10.0	
	Developer Fees	2.6	
	Gas Tax	0.5	
	Measure B Streets and Roads	0.4	
Entryway	Redevelopment Funds (ROPS)	0.75	
	Total	20.55	

# Timeline



# Questions?

---