



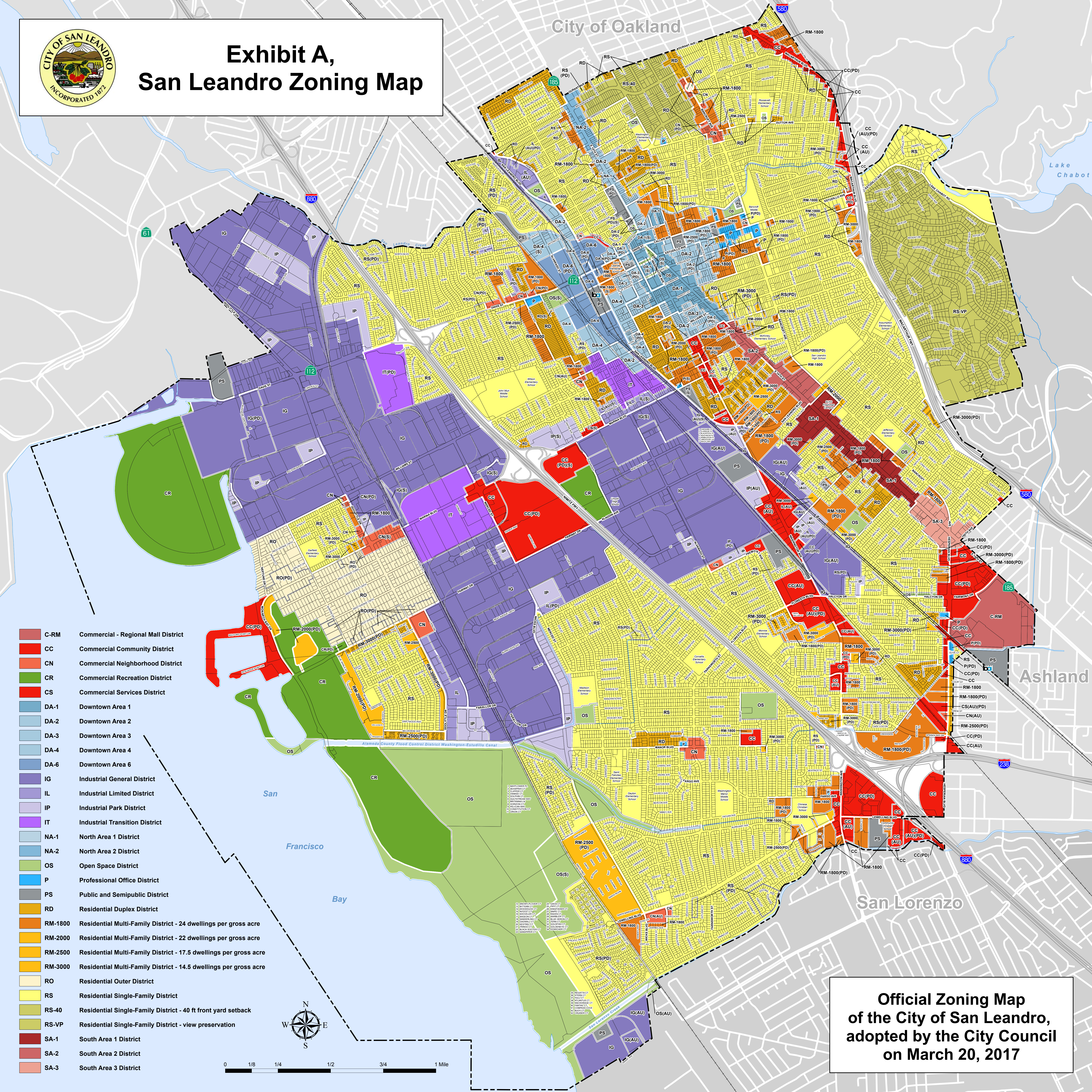
# Exhibit A, San Leandro Zoning Map

City of Oakland

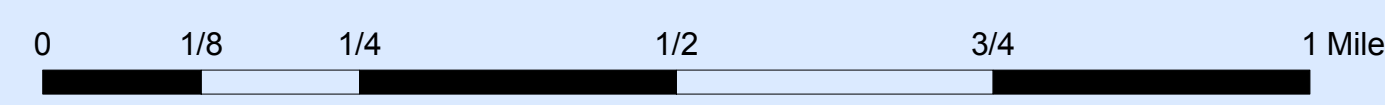
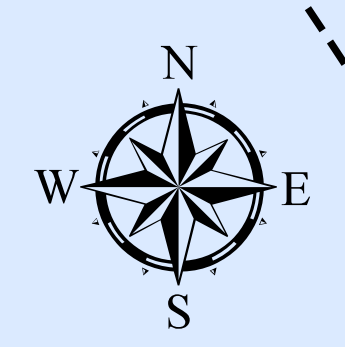
Lake Chabot

Ashland

San Lorenzo



- C-RM Commercial - Regional Mall District
- CC Commercial Community District
- CN Commercial Neighborhood District
- CR Commercial Recreation District
- CS Commercial Services District
- DA-1 Downtown Area 1
- DA-2 Downtown Area 2
- DA-3 Downtown Area 3
- DA-4 Downtown Area 4
- DA-6 Downtown Area 6
- IG Industrial General District
- IL Industrial Limited District
- IP Industrial Park District
- IT Industrial Transition District
- NA-1 North Area 1 District
- NA-2 North Area 2 District
- OS Open Space District
- P Professional Office District
- PS Public and Semipublic District
- RD Residential Duplex District
- RM-1800 Residential Multi-Family District - 24 dwellings per gross acre
- RM-2000 Residential Multi-Family District - 22 dwellings per gross acre
- RM-2500 Residential Multi-Family District - 17.5 dwellings per gross acre
- RM-3000 Residential Multi-Family District - 14.5 dwellings per gross acre
- RO Residential Outer District
- RS Residential Single-Family District
- RS-40 Residential Single-Family District - 40 ft front yard setback
- RS-VP Residential Single-Family District - view preservation
- SA-1 South Area 1 District
- SA-2 South Area 2 District
- SA-3 South Area 3 District



**Official Zoning Map  
of the City of San Leandro,  
adopted by the City Council  
on March 20, 2017**