

**AMENDED ASSESSMENT DIAGRAM**  
**PLAZA ASSESSMENT DISTRICT NO. 1**  
**(STREET OPENING ACT OF 1903)**  
**CITY OF SAN LEANDRO**  
**ALAMEDA COUNTY, CALIFORNIA**

AMENDING PLAZA ASSESSMENT DISTRICT NO. 1  
 (STREET OPENING ACT OF 1903)  
 RECORDED NOVEMBER 12, 1969 IN BOOK 1 OF MAPS OF  
 ASSESSMENT DISTRICTS, AT PAGE 128, ALAMEDA COUNTY RECORDS.  
 SCALE: 1"=50'


THIS AMENDED ASSESSMENT DIAGRAM IS AN AMENDED ASSESSMENT DIAGRAM  
 OF THE PLAZA ASSESSMENT DISTRICT NO. 1 (STREET OPENING ACT OF 1903),  
 CITY OF SAN LEANDRO, ALAMEDA COUNTY, CALIFORNIA. THE ASSESSMENT  
 DIAGRAM WAS DATED APRIL 1967 AND WAS FILED NOVEMBER 12, 1969  
 IN BOOK 1 OF MAPS OF ASSESSMENT DISTRICTS, AT PAGE 128, ALAMEDA  
 COUNTY RECORDS.

FILED THIS 10<sup>th</sup> DAY OF December, 1981 IN THE OFFICE OF THE  
 SUPERINTENDENT OF STREETS OF THE CITY OF SAN LEANDRO, ALAMEDA  
 COUNTY, CALIFORNIA.

*P. H. Long*  
 P. H. LONG R.C.E. 13170  
 SUPERINTENDENT OF STREETS  
 CITY OF SAN LEANDRO  
 ALAMEDA COUNTY, CALIFORNIA

FILED THIS 10<sup>th</sup> DAY OF December, 1981 IN THE OFFICE OF THE CITY  
 CLERK OF THE CITY OF SAN LEANDRO, ALAMEDA COUNTY, CALIFORNIA.

*Michael A. Oliver - Deputy*  
 RICHARD W. WEST  
 CITY CLERK  
 CITY OF SAN LEANDRO  
 ALAMEDA COUNTY, CALIFORNIA



FILED THIS 10<sup>th</sup> DAY OF December, 1981 AT 2:00 PM, M. IN THE OFFICE  
 OF THE COUNTY RECORDER OF ALAMEDA COUNTY, CALIFORNIA IN BOOK 1  
 OF MAPS OF ASSESSMENT DISTRICTS, AT PAGES 297-298.

81-205994  
 DH  
 RENE C. DAVIDSON  
 COUNTY RECORDER  
 ALAMEDA COUNTY, CALIFORNIA

BY *Reggie D. Mayberry*  
 DEPUTY

FILED THIS 10<sup>th</sup> DAY OF Dec, 1981 IN THE OFFICE OF THE COUNTY  
 AUDITOR OF ALAMEDA COUNTY, CALIFORNIA.

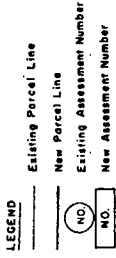
DONALD PARKIN  
 COUNTY AUDITOR  
 ALAMEDA COUNTY, CALIFORNIA  
 BY *Thomas J. ...*  
 DEPUTY

Plaza Assmt Dist 1 San Leandro

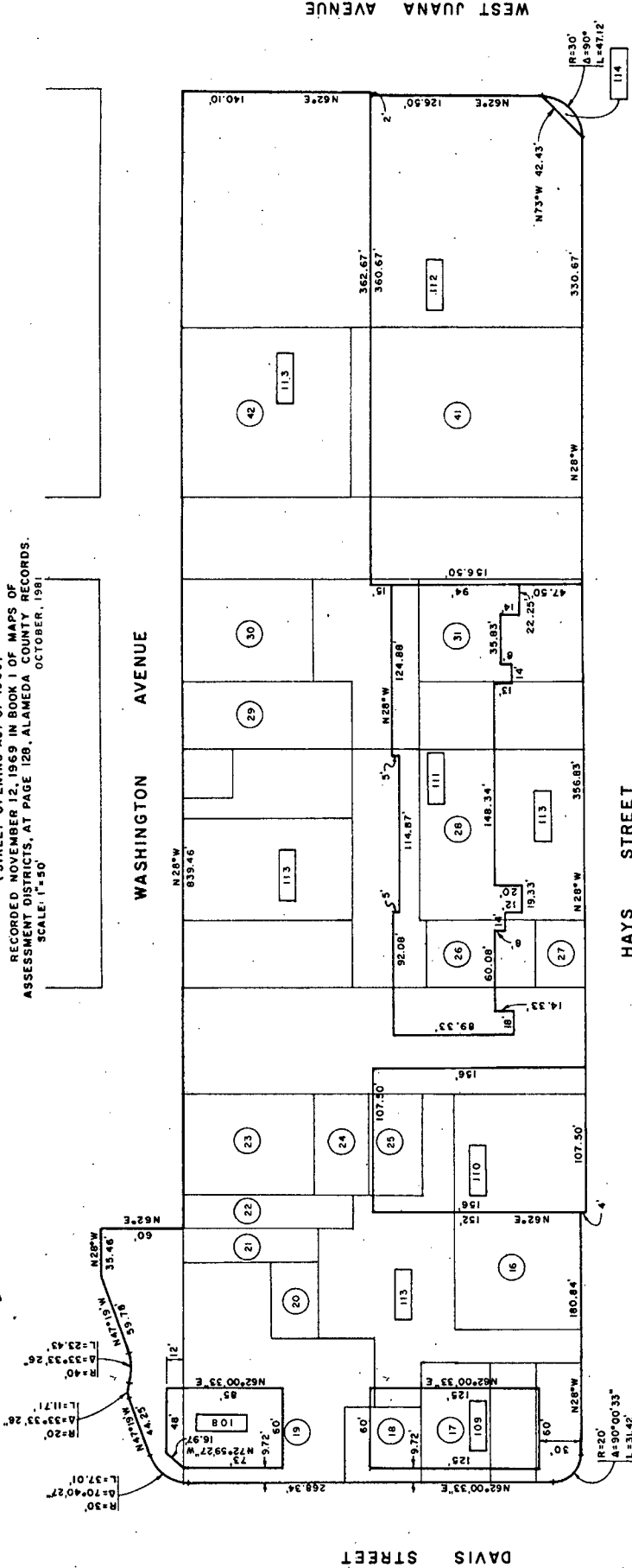
# AMENDED ASSESSMENT DIAGRAM PLAZA ASSESSMENT DISTRICT NO. 1 (STREET OPENING ACT OF 1903)

CITY OF SAN LEANDRO  
ALAMEDA COUNTY, CALIFORNIA

AMENDING PLAZA ASSESSMENT DISTRICT NO. 1  
(STREET OPENING ACT OF 1903)  
RECORDED NOVEMBER 12, 1969 IN BOOK 1 OF MAPS OF  
ASSESSMENT DISTRICTS, AT PAGE 128, ALAMEDA COUNTY RECORDS.  
SCALE: 1"=50' OCTOBER, 1981



EAST IAIN STREET



DAVIS STREET

WEST ESTUDILLO AVENUE

HAYS STREET

WEST JOAQUIN AVENUE

WASHINGTON AVENUE

WEST JUANA AVENUE

Note: All Parcel angles 90° unless otherwise noted

81-205994 SHEET 2 OF 2

Plaza Assmt Dist 1 San Leandro Bk 1 Pp 897-898

898