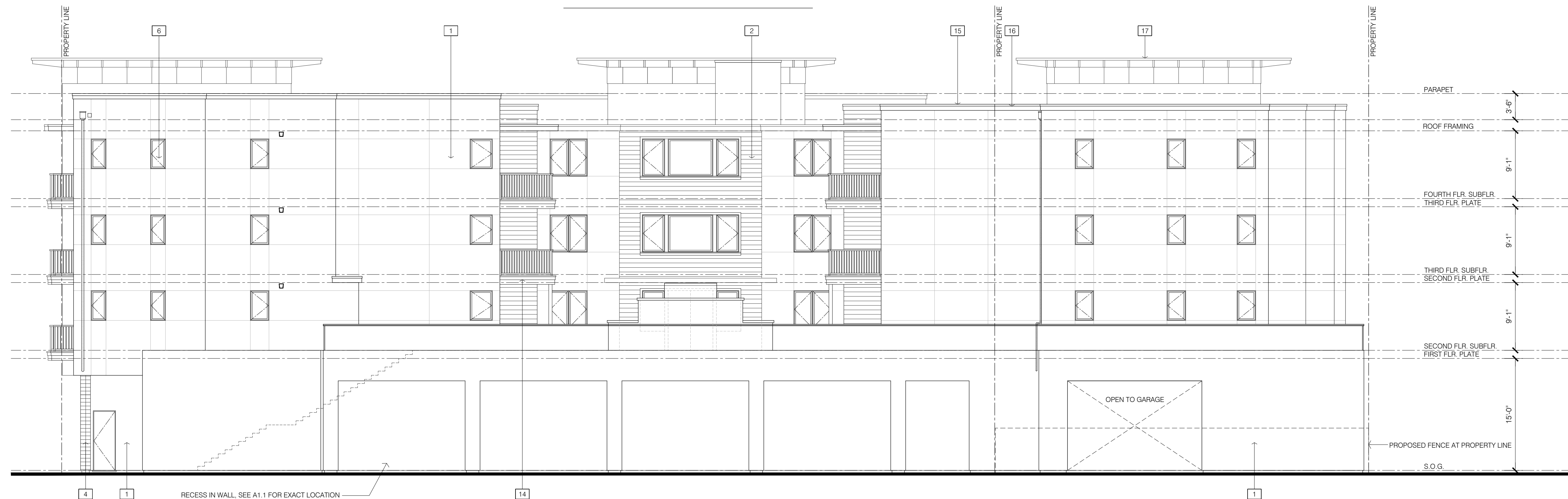


LEFT ELEVATION - WEST

- LEGEND:
- 3 COAT STUCCO SYSTEM - LIGHT DASH, SHERWIN WILLIAMS EIDER WHITE SW 7014
 - 5" SMOOTH LAP SIDING - JAMES HARDIE / ARTISAN, TIMBER BARK
 - HONED LIMESTONE TILES - DAL TILE / CENTER CITY, CARLTON BEIGE #L012
 - HONED MARBLE TILES - DAL TILE / CENTER CITY, DELANCY GREY #M322
 - GLASS TILES - DAL TILE / COLOR WAVE - BLENDS, SOFT CASHMERE #CW22
 - ALUMINUM OR VINYL WINDOWS - MILGARD, ESPRESSO
 - ALUMINUM OR VINYL DECK DOORS - MILGARD, ESPRESSO
 - ALUMINUM RESIDENTIAL ENTRY - KAWNEER OR APPROVED EQ., ANODIZED BRONZE ALUMINUM - MEDIUM BRONZE #28
 - METAL GARAGE DOOR - PAINTED METAL - SHERWIN WILLIAMS - TURKISH COFFEE SW 6076
 - ALUMINUM COMMERCIAL WINDOWS - KAWNEER OR APPROVED EQ. / TRIFAB SERIES 601, ANODIZED BRONZE ALUMINUM - MEDIUM BRONZE #28
 - ALUMINUM COMMERCIAL DOORS - KAWNEER OR APPROVED EQ. / TRIFAB SERIES 601, ANODIZED BRONZE ALUMINUM - MEDIUM BRONZE #28
 - ALUMINUM GLASS WALL - MILGARD / MOVING WALL SYSTEMS, STACKING GLASS WALLS - ESPRESSO
 - METAL SERVICE DOOR - FLUSH DOOR, PAINT TO MATCH SURROUNDING WALL
 - METAL RAILINGS - PAINTED METAL, SHERWIN WILLIAMS TURKISH COFFEE SW 6076
 - FASCIA - 24 GA. STEEL / PETERSEN ALUMINUM / PAC-TITE WT FASCIA, ANODIZED ALUMINUM - MEDIUM BRONZE
 - COPING - 24 GA. STEEL / PETERSEN ALUMINUM / PAC-TITE TAPED COPING, ANODIZED ALUMINUM - MEDIUM BRONZE
 - METAL CORNICE - PAINTED, SHERWIN WILLIAMS - TURKISH COFFEE SW 6076
 - ROOFING SYSTEM - TPO / FIRESTONE OR EQ., COOL ROOF - WHITE



NORTH ELEVATION - REAR

268 PARROTT STREET
SAN LEANDRO, CA



Architecture | Planning | Interiors

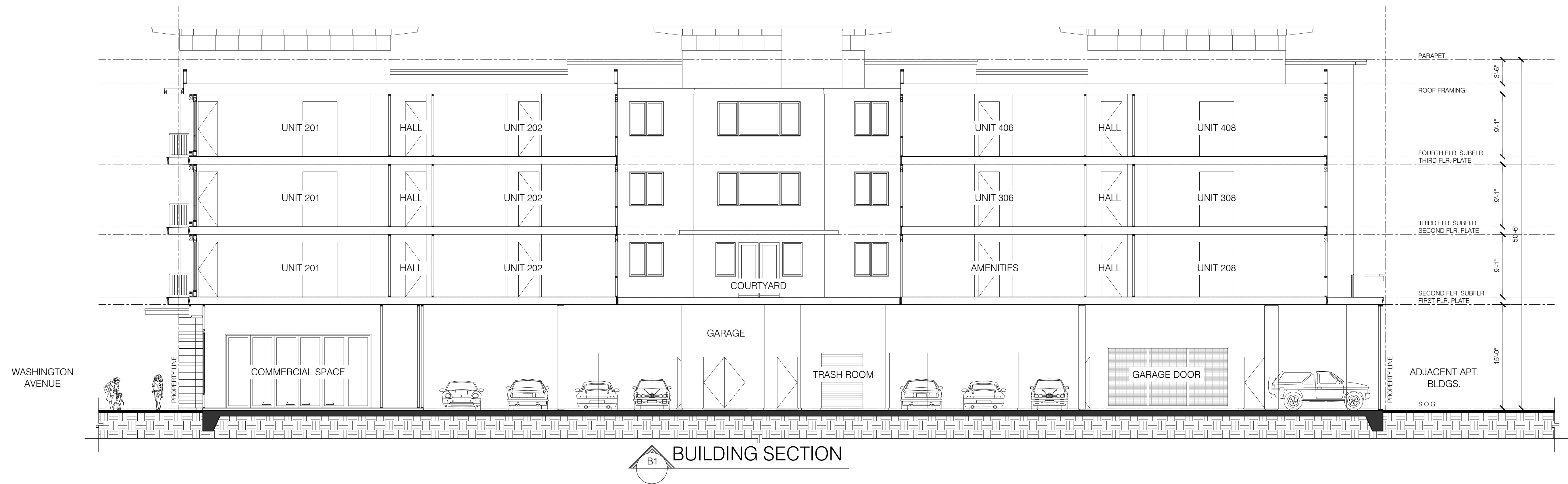
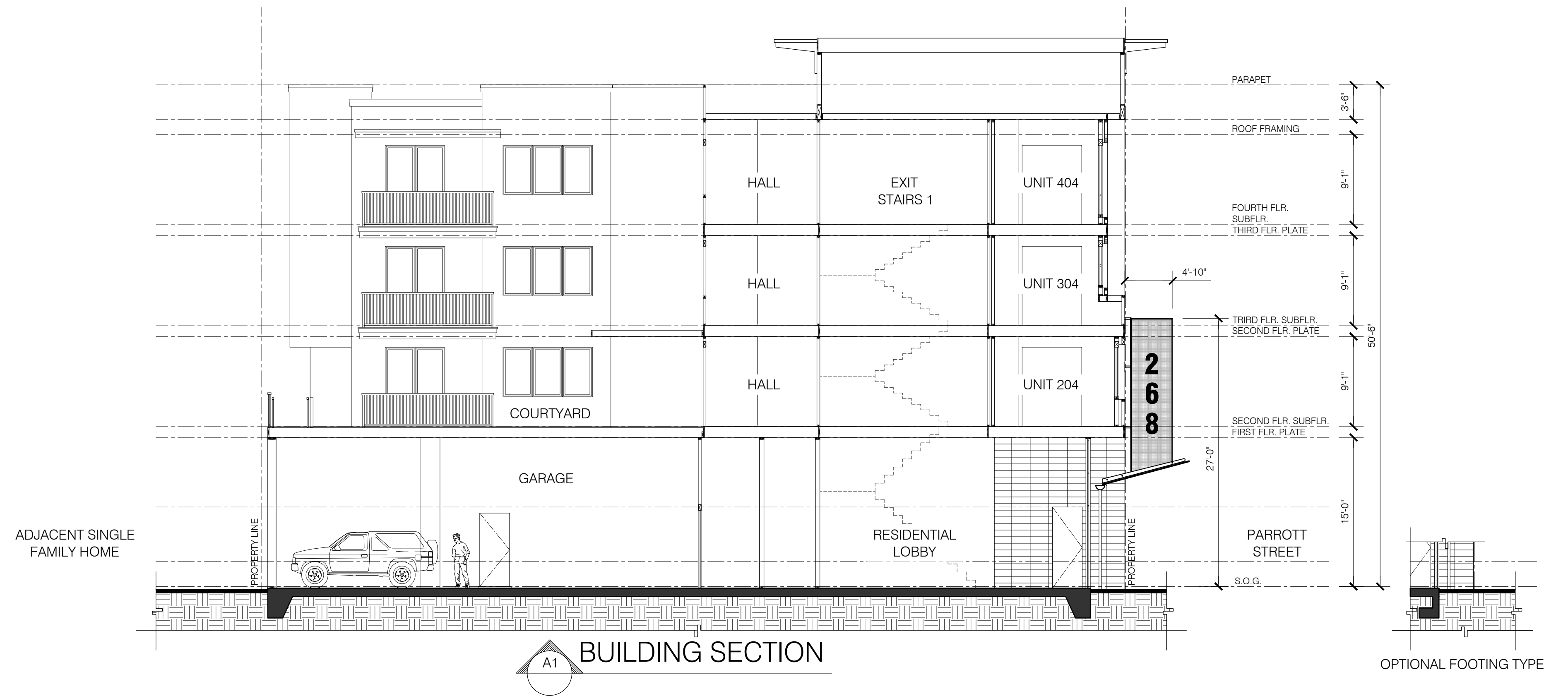
444 Spear Street, Suite 105
San Francisco, CA 94105
www.hunthalejones.com

t. 415-512-1300
f. 415-288-0288

EXTERIOR ELEVATIONS

A2.2

SCALE: 1/8"=1'-0"
DATE: 01.03.2019
PROJECT: 335006



268 PARROTT STREET
SAN LEANDRO, CA



Architecture | Planning | Interiors

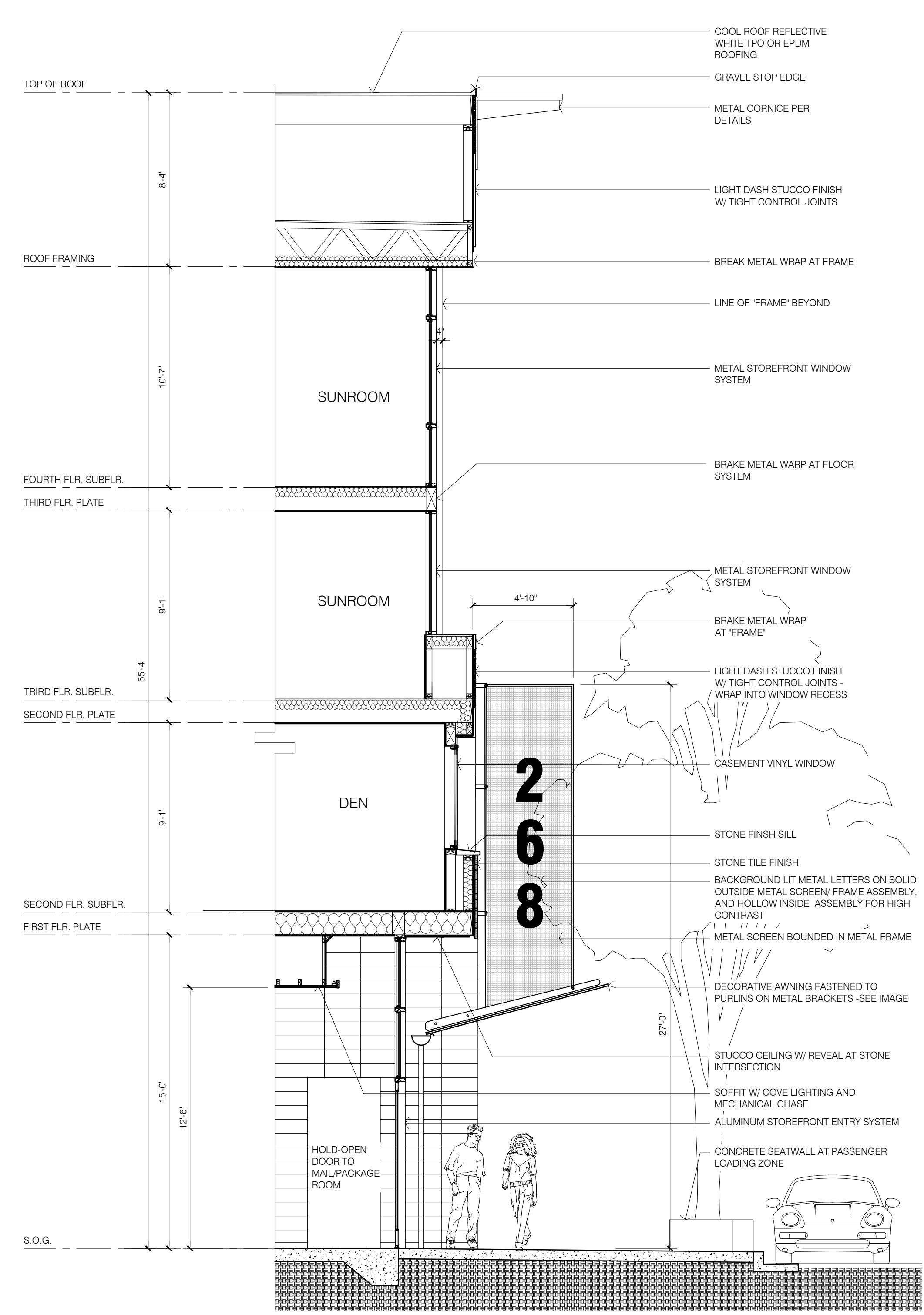
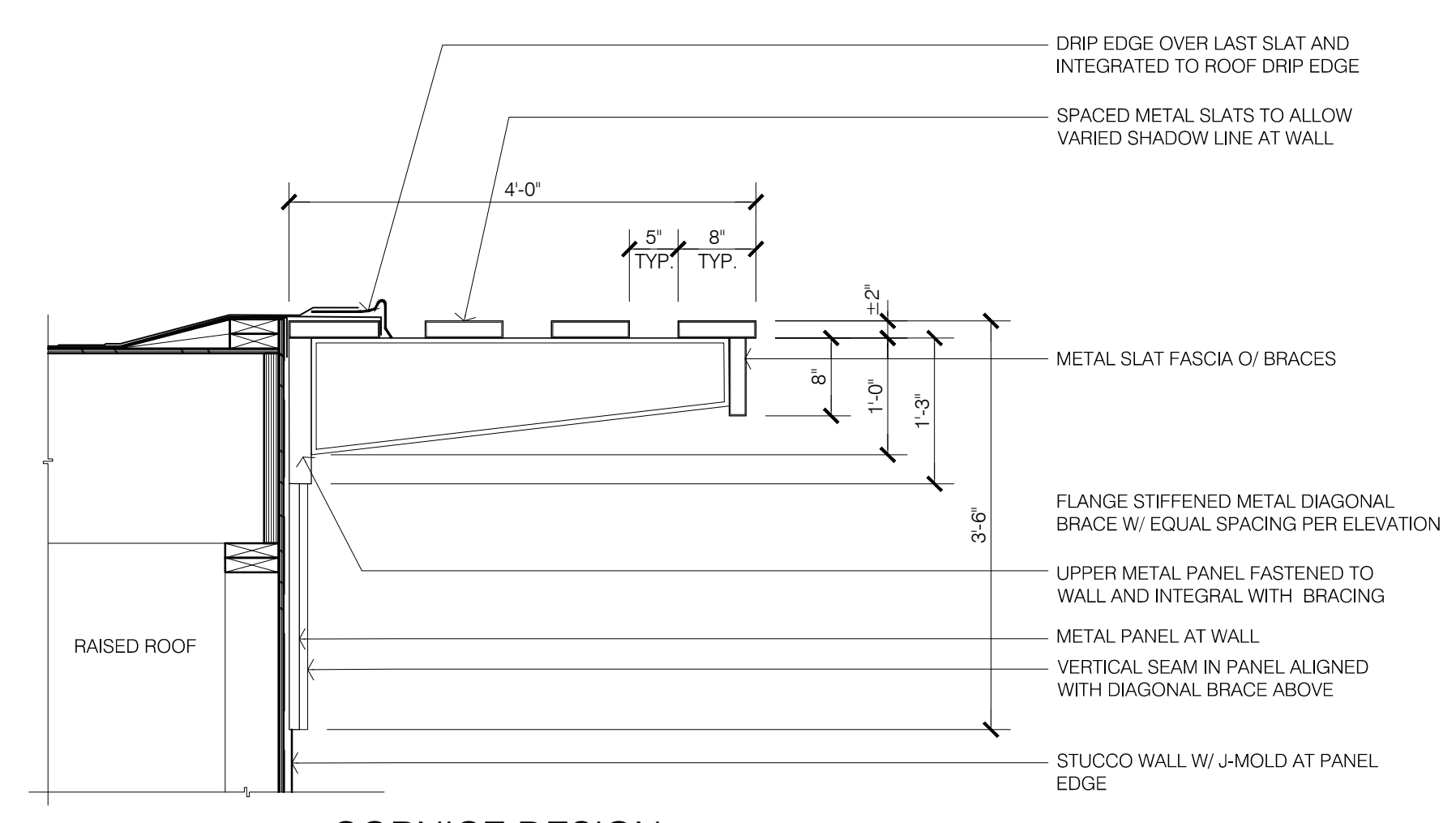
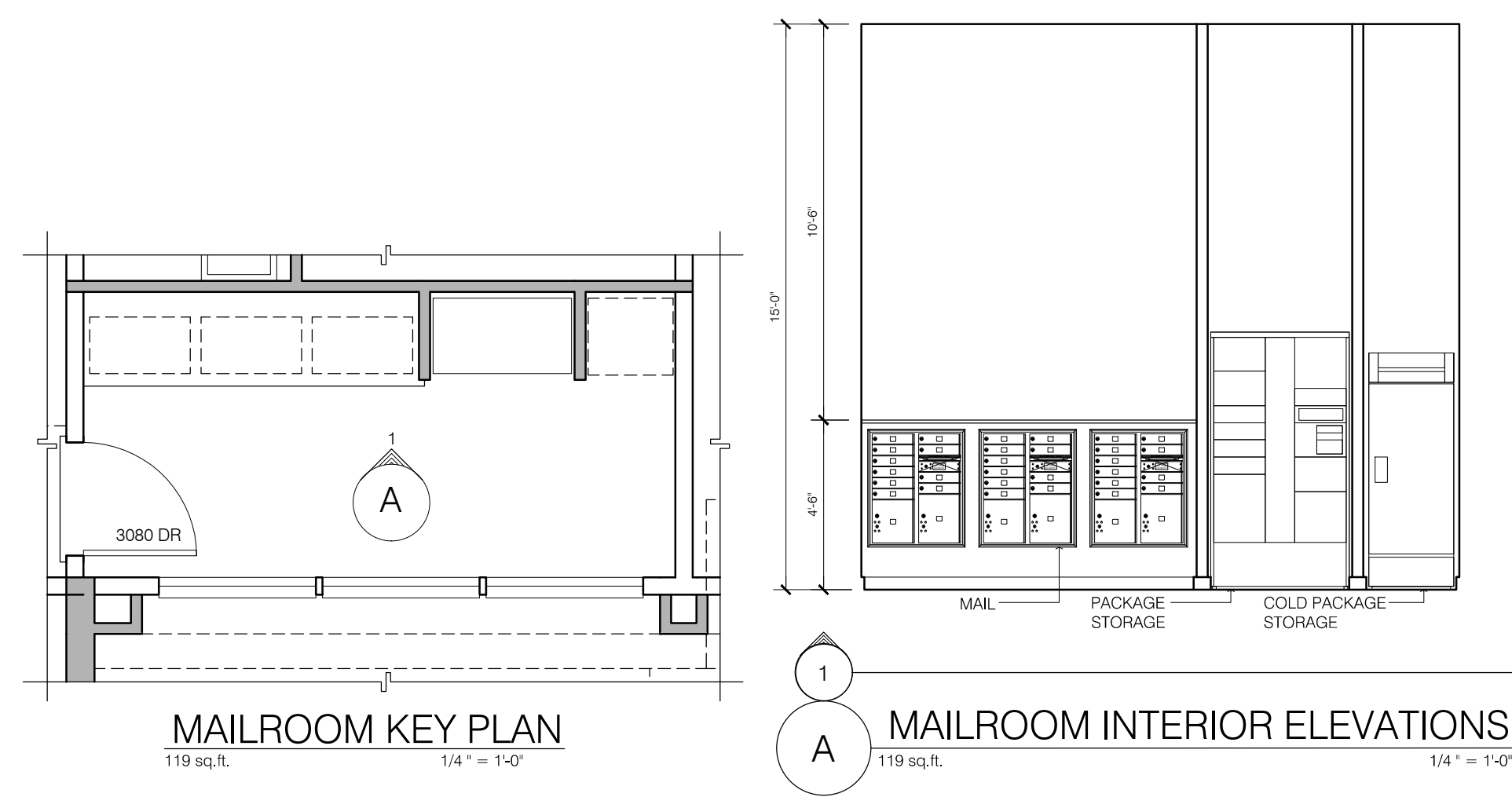
444 Spear Street, Suite 105
San Francisco, CA 94105
www.hunthalejones.com

t. 415-512-1300
f. 415-288-0288

BUILDING SECTION

A3.1

SCALE: 1/8"=1'-0"
DATE: 01.03.2019
PROJECT: 335006



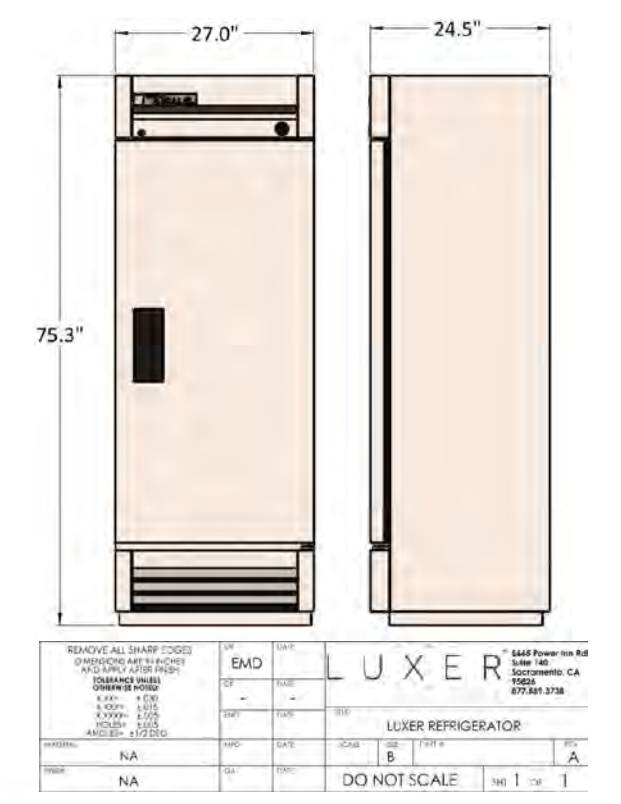
Salsbury Recessed Mounted 4C Horizontal Mailbox - 10 Door High Unit (37 1/2 Inches) - Double Column - 10 MB1 Doors / 1 PL 4 and 1PL 4.5- Aluminum - Front Loading - USPS Access
Model # 3710DA-10AFU

Color: Aluminum

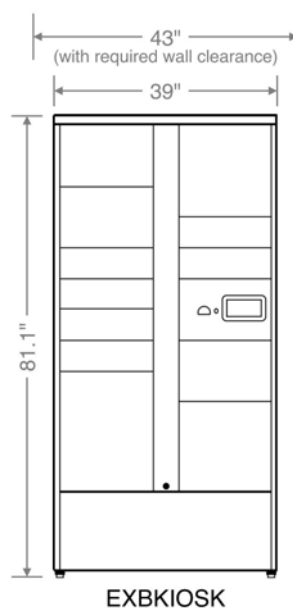
Price: \$1,070.00
Size: 31.125" W x 37.5" H x 17" D
Weight: 130 lbs

Volume Discount Pricing
Quantity Price
2 - 5 \$990.00
6 + \$910.00

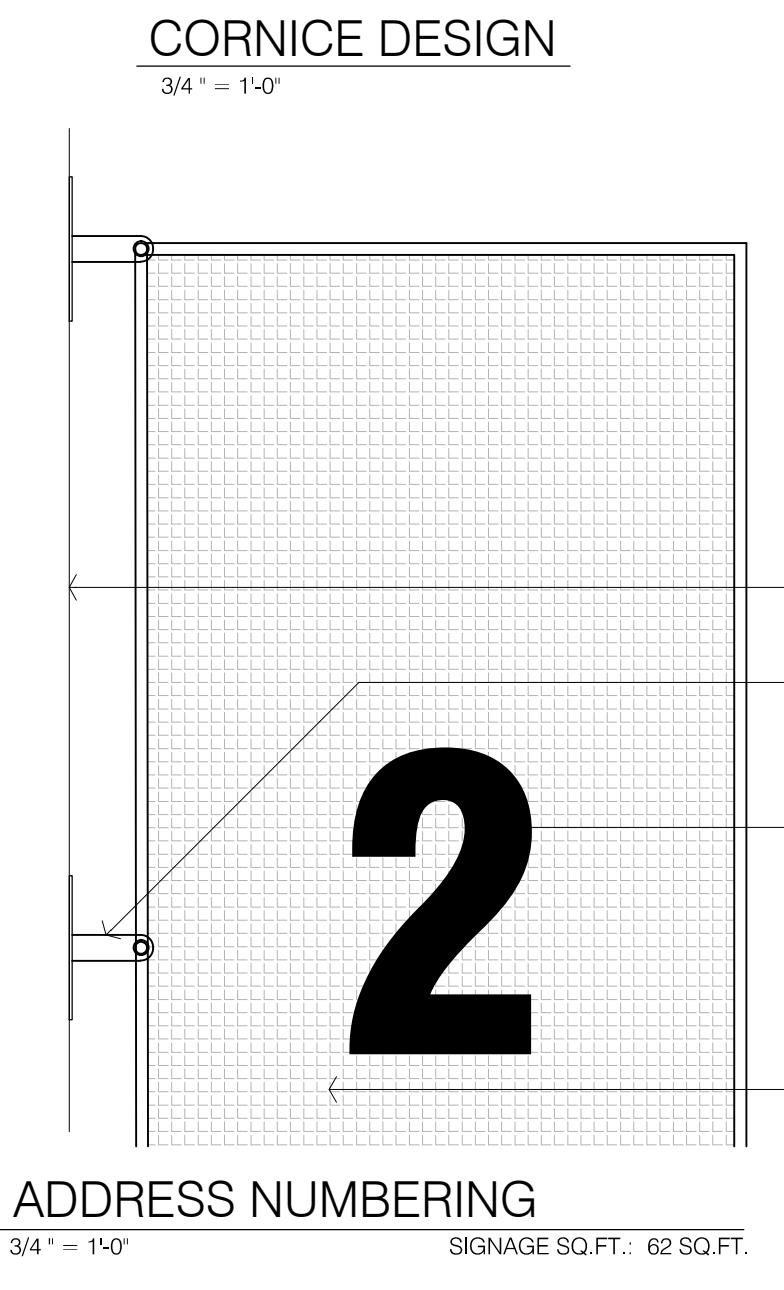
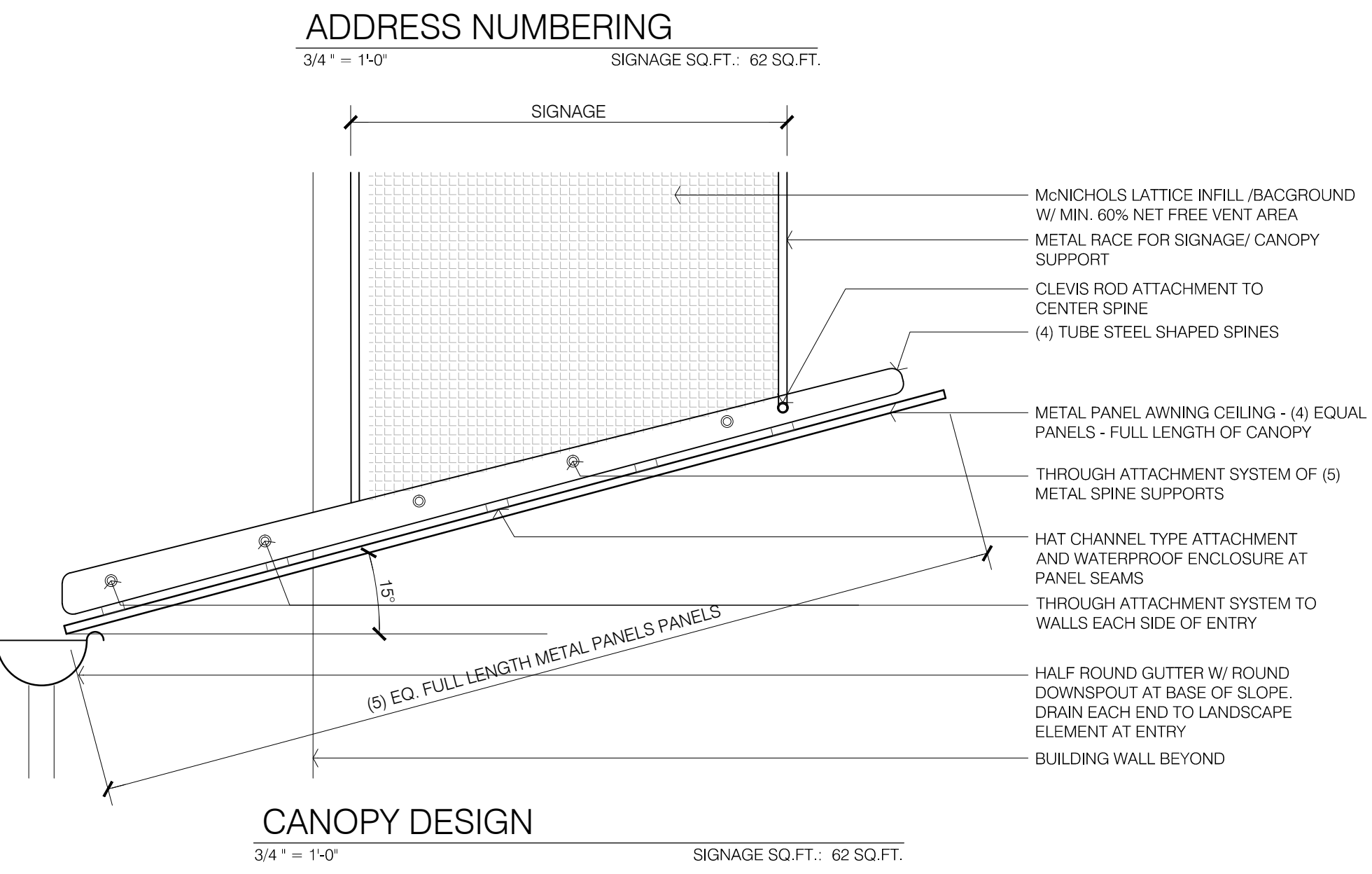
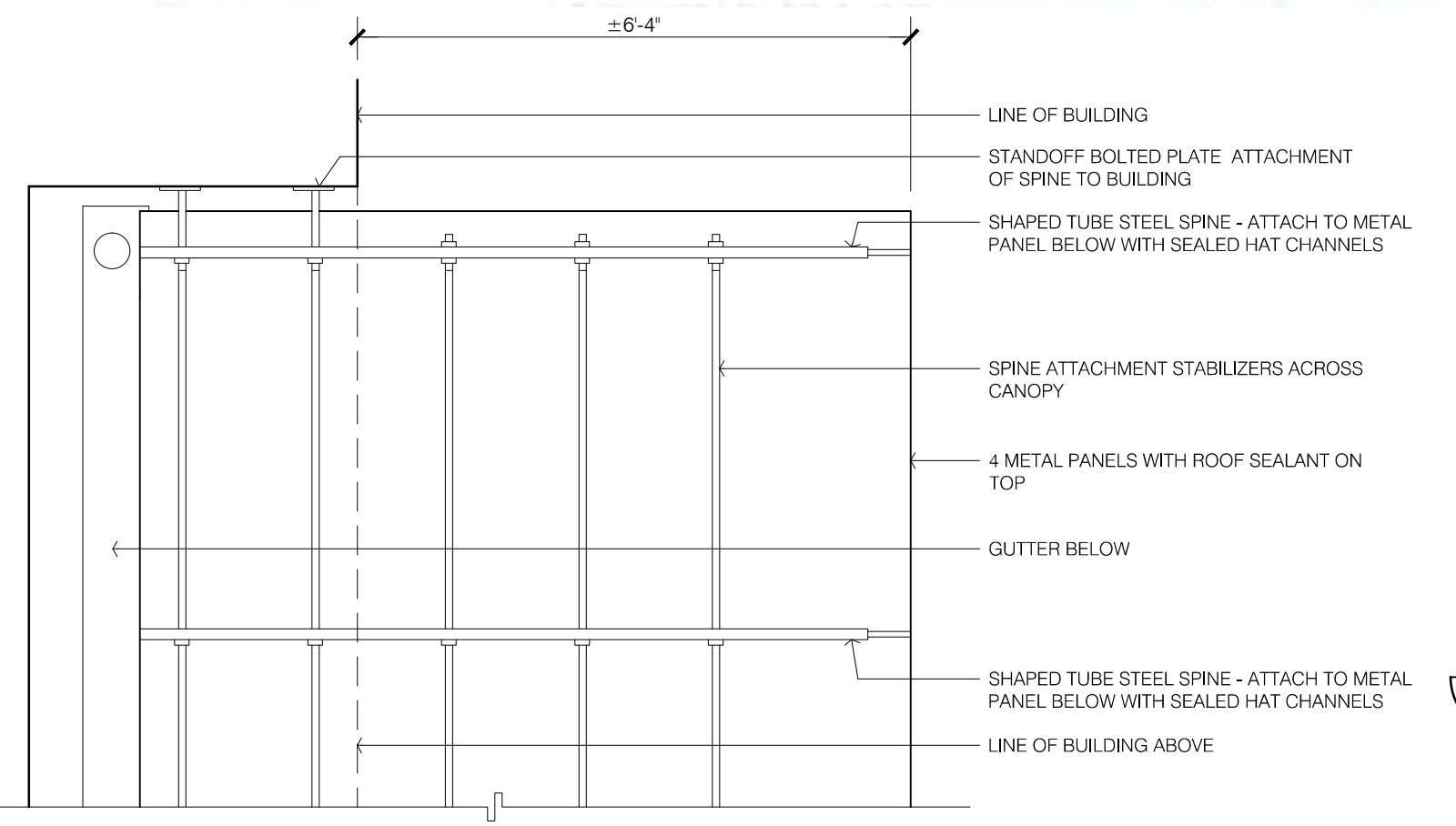
See More Information
Contact us for bulk pricing



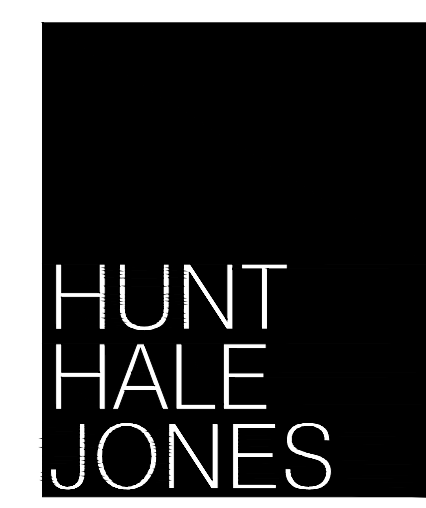
MODULE/TOWER COUNT		LOCKER COMPARTMENT INFORMATION				
Module	Qty.	Type	Qty.	Height	Width	Depth
EXBKIOSK	1	1-High	6	4.8"	13.5"	22.5"
EXB6M4	0	2-High	3	10.2"	13.5"	22.5"
EXB6M9	0	3-High	2	15.6"	13.5"	22.5"
EXB6M10	0	4-High	1	21.0"	13.5"	22.5"
EXB6M13	0	5-High	0	26.4"	13.5"	22.5"
EXB6M16	0	6-High	0	31.8"	13.5"	22.5"
Total:	1	Total:	12			



- SYSTEM OVERVIEW**
Configuration: PCEX-12
Installation Type: Linear
Color Finish: TSD
- SITE PREPARATION NOTES**
- Minimum ceiling height for installation is 87.1".
 - Electrical and internet outlets must be installed at the kiosk lower location with bottom of the face plates at 81.1" AFF. If outlets are surface mounted, bottom of faceplates should be at 82.5" AFF.
 - System dimensions shown above should be verified in the field to confirm the system fits within desired finished space. Allow recommended clearance of 3" from finished walls to locker exterior.
 - If the system will be recessed in the wall, the space must be built out with finished walls and flooring PRIOR to the installation.

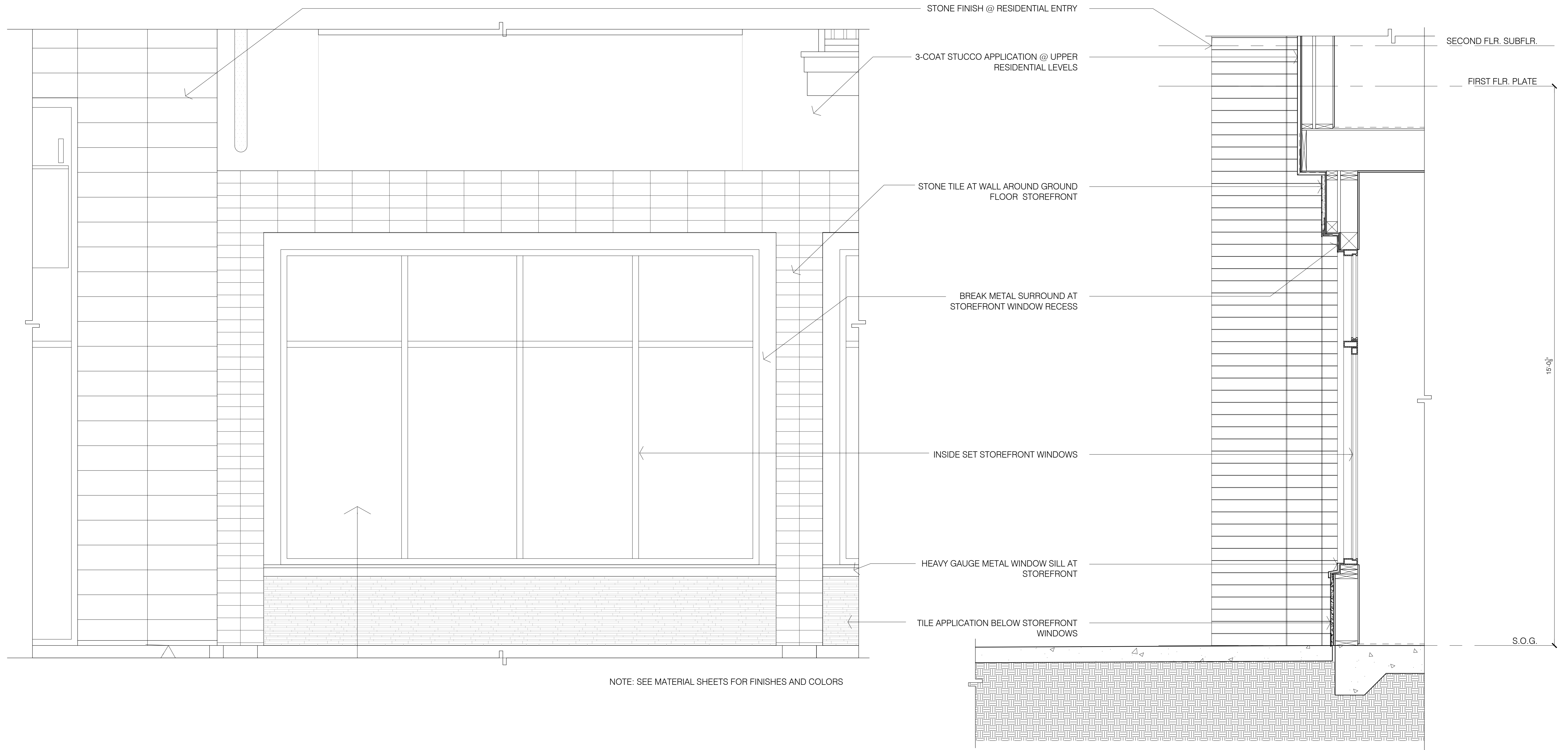


268 PARROTT STREET
SAN LEANDRO, CA



Architecture | Planning | Interiors
444 Spear Street, Suite 105
San Francisco, CA 94105
www.hunthalejones.com
t. 415-512-1300
f. 415-288-0288

WALL SECTIONS
A4.1
SCALE: N.T.S.
DATE: 01.03.2019
PROJECT: 335006



STOREFRONT ELEVATION

STOREFRONT WINDOW SECTION

268 PARROTT STREET
SAN LEANDRO, CA



Architecture | Planning | Interiors

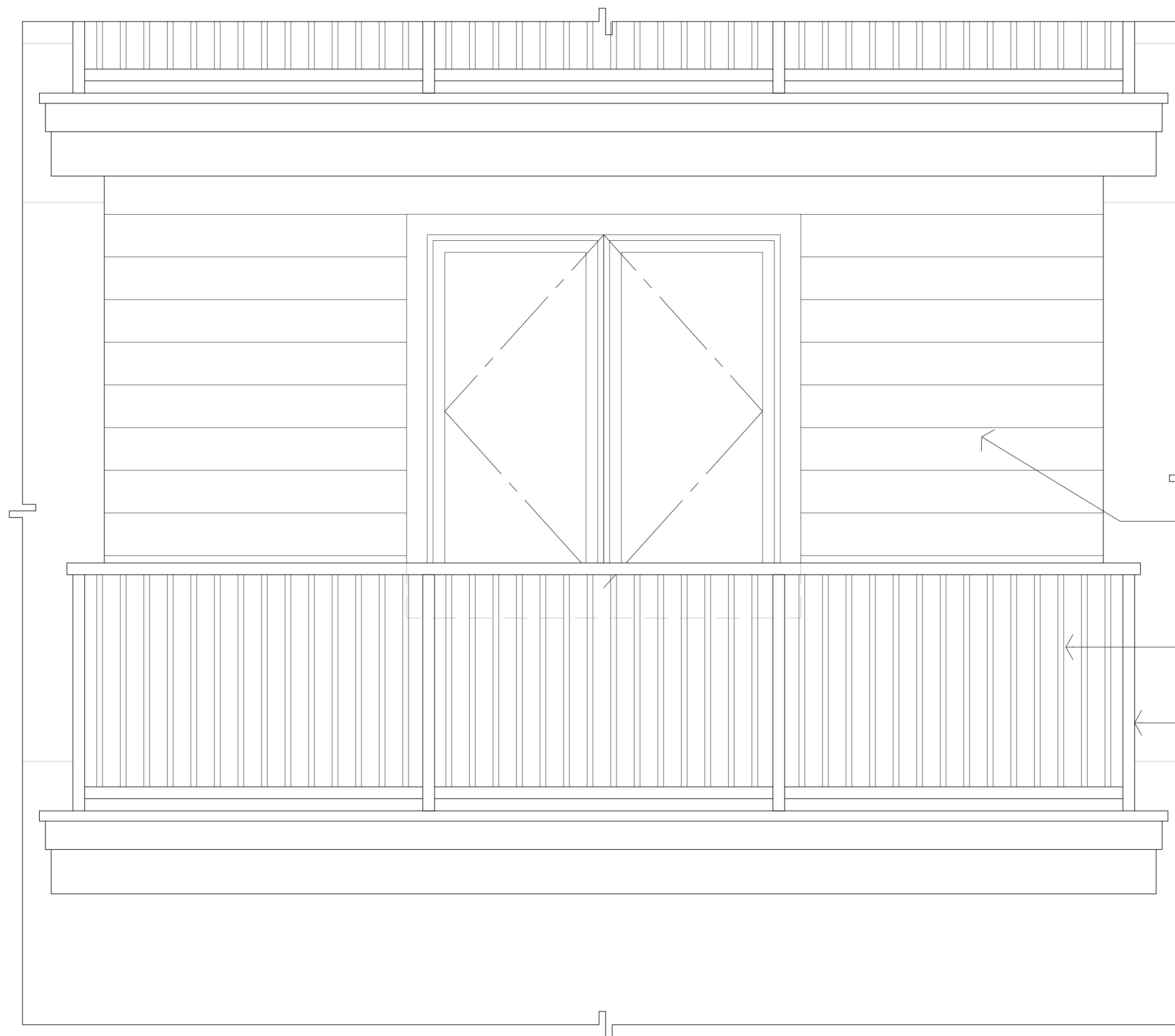
444 Spear Street, Suite 105
San Francisco, CA 94105
www.hunthalejones.com

t. 415-512-1300
f. 415-288-0288

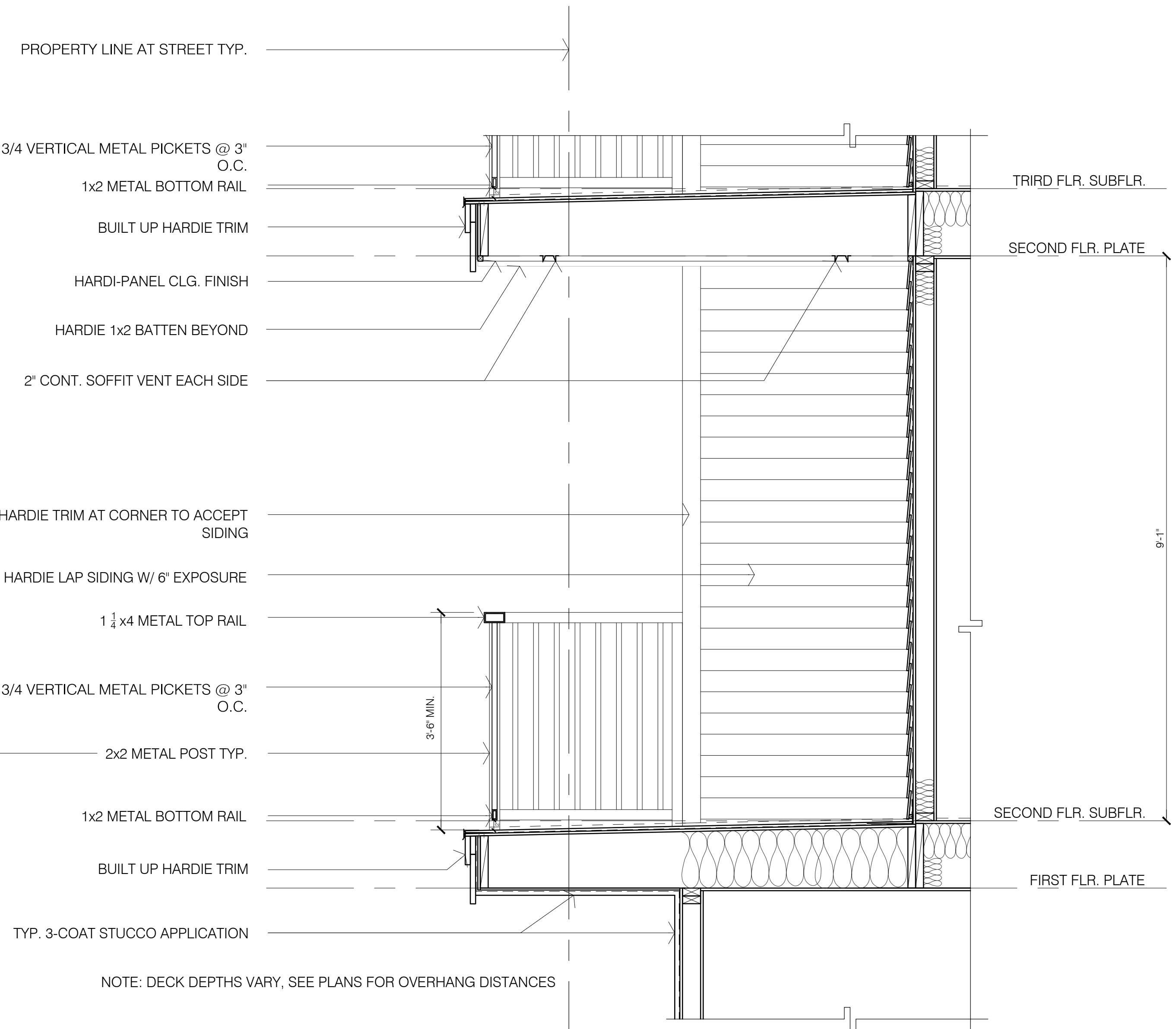
STOREFRONT STUDY

A4.2

SCALE: 3/4"=1'-0"
DATE: 01.03.2019
PROJECT: 335006



DECK ELEVATION



DECK DETAIL

268 PARROTT STREET
SAN LEANDRO, CA



Architecture | Planning | Interiors

444 Spear Street, Suite 105
San Francisco, CA 94105
www.hunthalejones.com

t. 415-512-1300
f. 415-288-0288

BACLONY STUDY

A4.3

SCALE: 3/4"=1'-0"
DATE: 01.03.2019
PROJECT: 335006