

# Alameda County Fire Department




CERT Basic Training







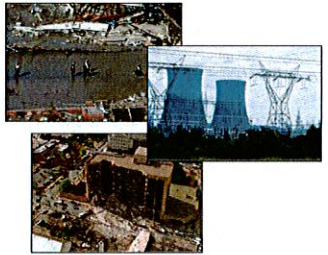


## Setting the Stage: About the Program

## Types of Disaster



- Natural
- Technological
- Intentional

CERT Basic Training 1-2

## Course Outline - Modules



- I. Disaster Preparedness
- II. Fire Safety and Hazardous Materials
- III. Disaster Medical Operations/Triage
- IV. Light Search and Rescue
- V. CERT Organization
- VI. Disaster Psychology
- VII. CERT and Terrorism

CERT Basic Training 1-3

## Course Goals



- Identify roles and responsibilities for CERT community efforts
- Describe functions of CERTs
- Undertake personal and organizational preparedness actions
- Become part of the solution, not part of the problem

CERT Basic Training 1-4

## The Trained Public

- Learn about community alerts, warnings, and evacuation routes
- Take additional training
- Practice skills and personal plans
- Network and help others
- Give feedback to community
- Report suspicious activity
- Volunteer

CERT Basic Training 1-5

## CERT Roles and Responsibilities

- Mission is to help lessen the impact of disasters to neighbors & community
- Provide leadership to encourage other community members to prepare by organizing community efforts (Map Your Neighborhood)
- Outcome: Increased self sufficiency & community resiliency = faster recovery



CERT Basic Training

1-6



## Be Prepared- Make a Kit - Get Involved

- Preparedness requires active participation from all
  - Talk to friends and family about hazards
  - Ask about emergency planning outside the home
  - Make sure those in charge have a plan
- Training provides skills needed to help others and keep skills current
  - CERT program provides training, practice, and connection to others
  - Participate in drills and exercises
  - Talk to friends and family about volunteering



CERT Basic Training

1-7



## Model for ACFD's Program

- ACFD has a "catch and release" program for San Leandro
- Community advocates/spokespersons for the CERT Program (Dawn Fehr, Vince Rosato)
- Community advocate/Spokesperson for MYN – Patricia Minnis from Citizens' for a Safer San Leandro

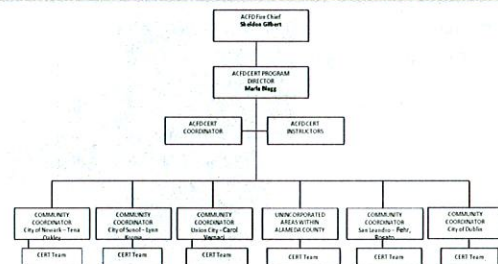


CERT Basic Training

1-8



## CERT Organization Day to Day Ops

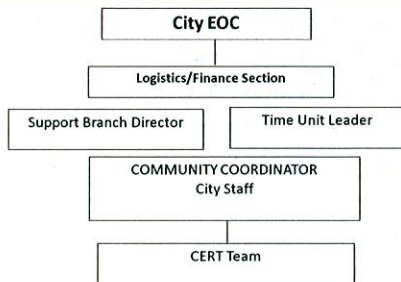


CERT Basic Training

1-9



## CERT Organization During an Incident



CERT Basic Training

1-10



## CERT Disaster Response

- Respond in period immediately after a disaster
- Assist emergency response personnel when requested
- CERT members' first responsibility is personal and family safety
- Respond after a disaster:
  - Locate and turn off utilities, if safe
  - Extinguish small fires
  - Treat injuries
  - Conduct light search and rescue
  - Help to relieve survivor stress



CERT Basic Training

1-11



## Non-Disaster Roles

- Identify and aid neighbors/coworkers who might need assistance
- Distribute preparedness materials;
- Staff community booths at special events
- Assist with personal preparedness training
- Logistical staff support to city staff in a disaster



CERT Basic Training

1-12



## CERT as a Local Resource in a Disaster

- City Asset – How to Tap into Resource
- City develops roster and notification plan
- City requests & supervises their mission
- Disaster Service Worker swearing in...
  - Distribute water
  - Assist with logistics at a shelter or POD site
  - Provide initial damage estimate information in local neighborhoods



CERT Basic Training

1-13



## Protection for Disaster Workers

- CERT members generally protected by:
  - "Good Samaritan" laws
  - Volunteer Protection Act of 1997
  - Relevant State statutes

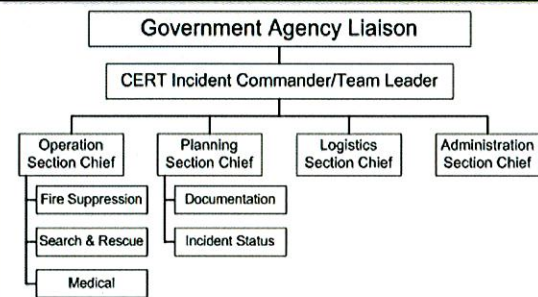


CERT Basic Training

1-14



## CERT Organization



CERT Basic Training

1-15



## CERT in Action



CERT Basic Training

1-16



## Class Schedule

- San Leandro from 1/17 to 2/21, 2012
- Newark April 2012
- Union City 2012
- 6 evening classes – 3 hours each
- 3 hour on-line class with a hands on drill



CERT Basic Training

1-17



## Personal Protective Equipment

- Helmet
- Goggles
- N95 Mask
- Gloves (work and non-latex)
- Sturdy shoes or work boots



CERT Basic Training

1-18



## Additional Training for CERTs

- Advanced first aid
- Animal issues in disasters
- Automated External Defibrillator (AED) use
- Community relations
- CPR skills
- Debris removal
- Donations management
- Shelter management
- Special needs concerns
- Traffic/crowd control
- Utilities control
- Online courses



CERT Basic Training

1-19

