

San Lorenzo Unified School District



SAN LEANDRO CITY COUNCIL,
SAN LEANDRO UNIFIED SCHOOL DISTRICT BOARD OF TRUSTEES, &
SAN LORENZO UNIFIED SCHOOL DISTRICT BOARD OF TRUSTEES
JOINT WORK SESSION

APRIL 25, 2016

Strategic Priorities and District Goals

Student Achievement: Learning Outcomes for All Students

- Teachers will improve the effectiveness of their instruction so all students are able to demonstrate mastery of Common Core Standards using multiple measures.

Student Engagement: The San Lorenzo Unified School District will nurture students to become committed, caring and connected

- Teachers and staff will provide relevant and engaging learning opportunities:

Basic Services: The San Lorenzo Unified School District will provide high quality services, schools and staff

- Staff will work collaboratively with shared responsibility to provide high quality services and ensure the learning environments are clean, safe, well-maintained, and inviting.

Parent Involvement: The San Lorenzo Unified School District will cultivate meaningful partnerships and authentic family engagement

- Parents will engage in meaningful opportunities including two-way communication with teachers and support staff; participating in parent education; utilizing educational and support services.

SAN LORENZO UNIFIED SCHOOL DISTRICT

EQUITY

Culture &
Climate
Restorative
Practices
Basic Services

ENGAGEMENT

Student
Engagement
Parent
Involvement
Professional
Learning

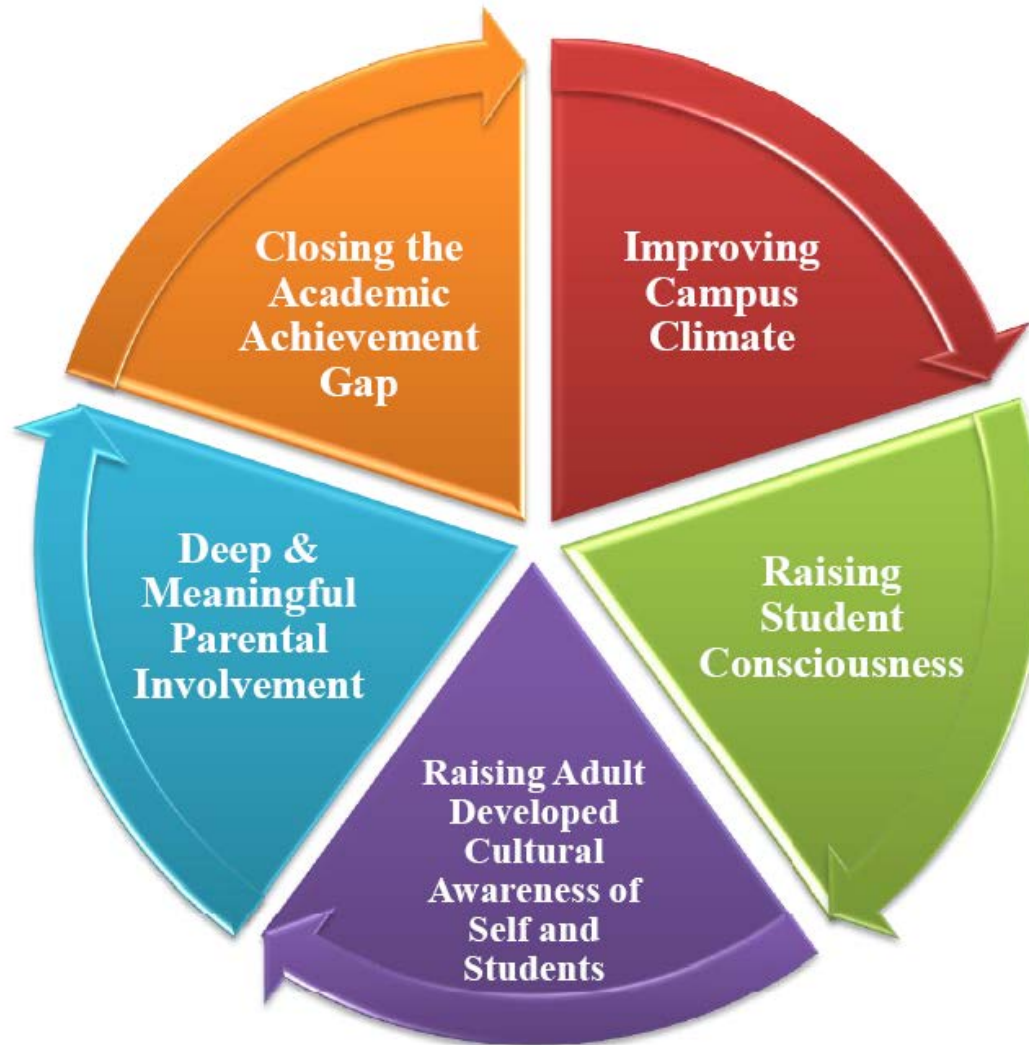
COMMON CORE

Collaboration
Communication
Critical Thinking
Creativity

EXCELLENCE

**College
and
Career
Readiness**

Equity Initiatives Wheel



Problem of Practice

Describe how this problem is impacted by institutional racism:

**Leadership Action(s) related to:
Beliefs**

**Leadership Action(s) related to:
Behaviors**

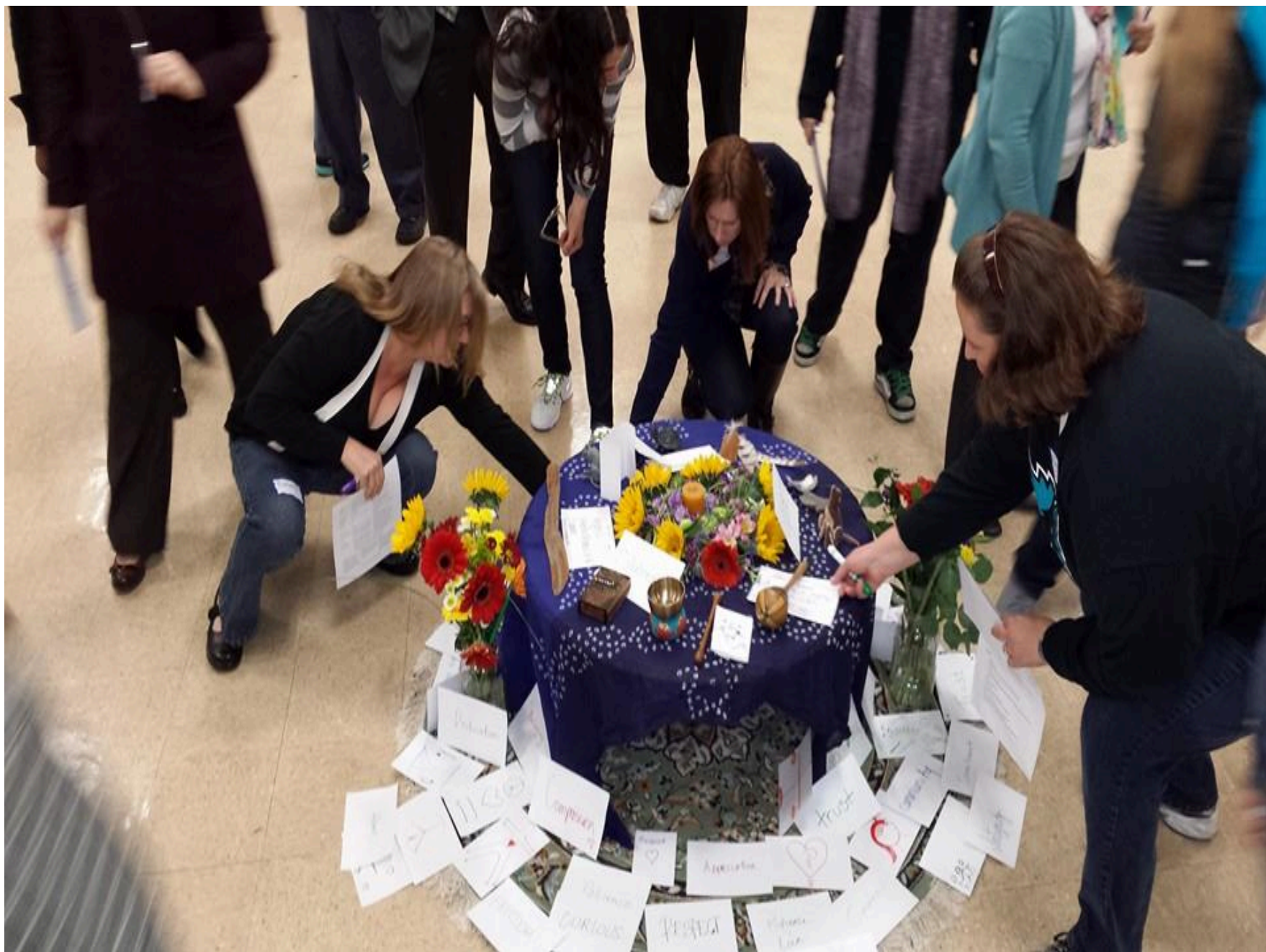
Evidence-based Outcome:

**Leadership Action(s) related to:
Systems**

**Leadership Action(s) related to:
Symbols**

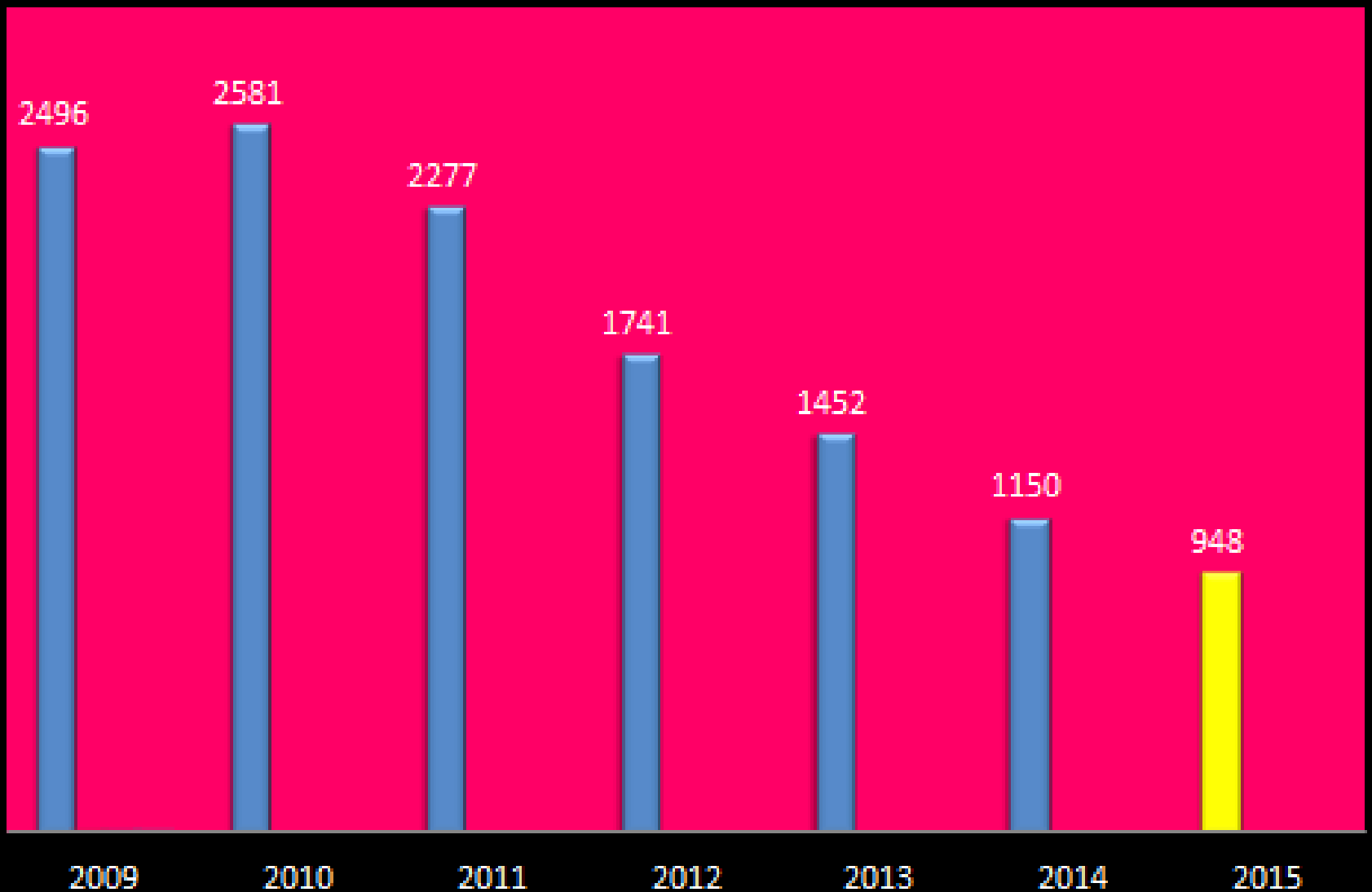


Restorative Practices & Restorative Justice



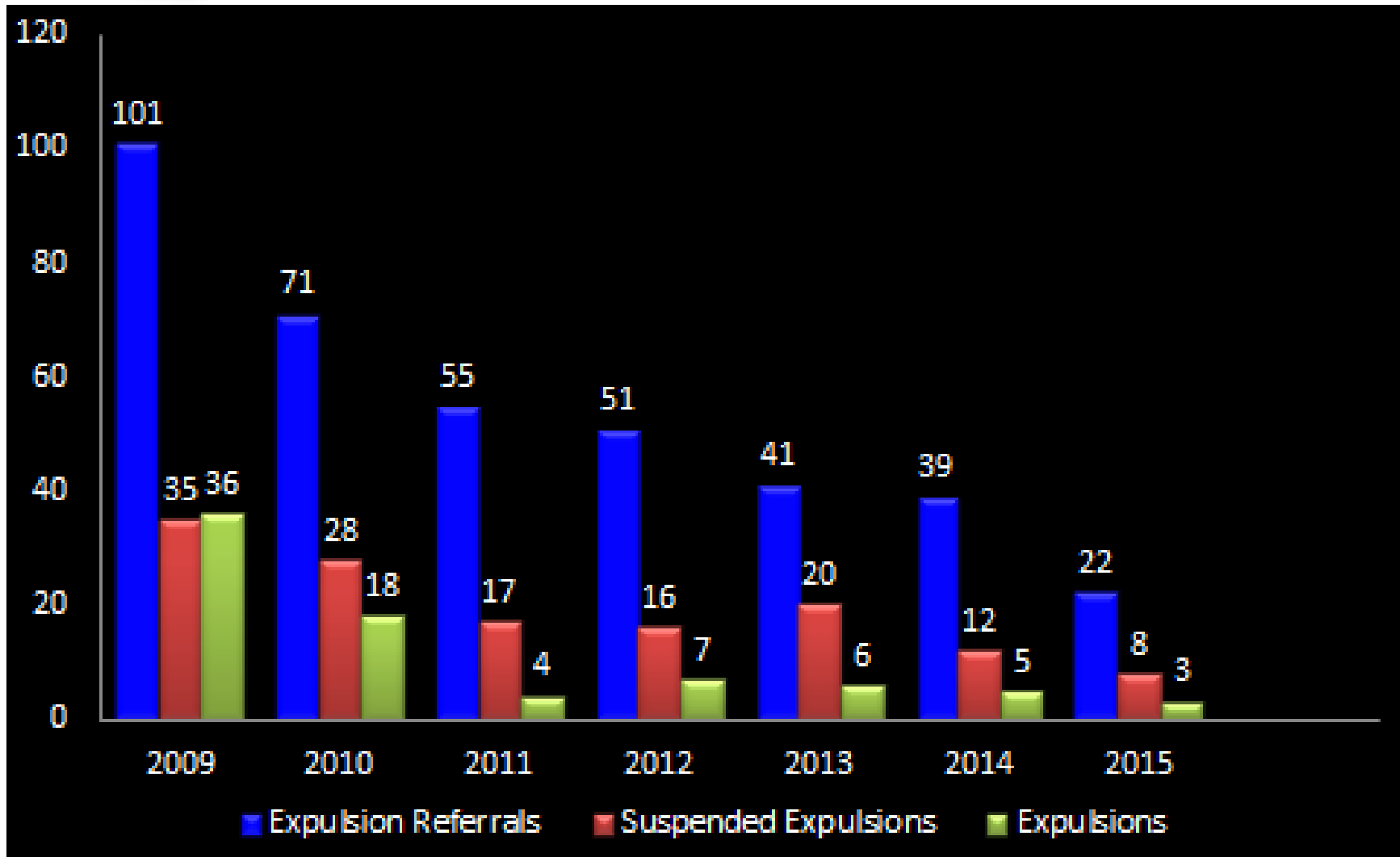


2009-2015 Suspensions





2009-2015 Expulsion Data





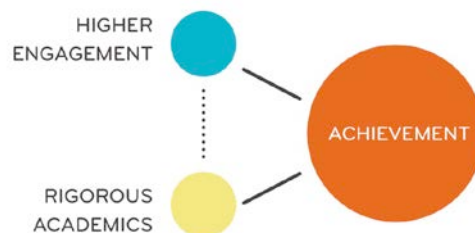
“We will set a clear goal: Every student should graduate from high school ready for college and career, regardless of their income, race, ethnic or language background, or disability status.”

– President Barack

Obama



College



Career

Ready in San Lorenzo



“Linked Learning is the vehicle with the most promise to implement [the Common Core]. The Common Core is the ‘what’; Linked Learning [is] the ‘how.’”

– Pamela Seki, Director of Curriculum, Instruction & Professional Dev’t, Long Beach Unified



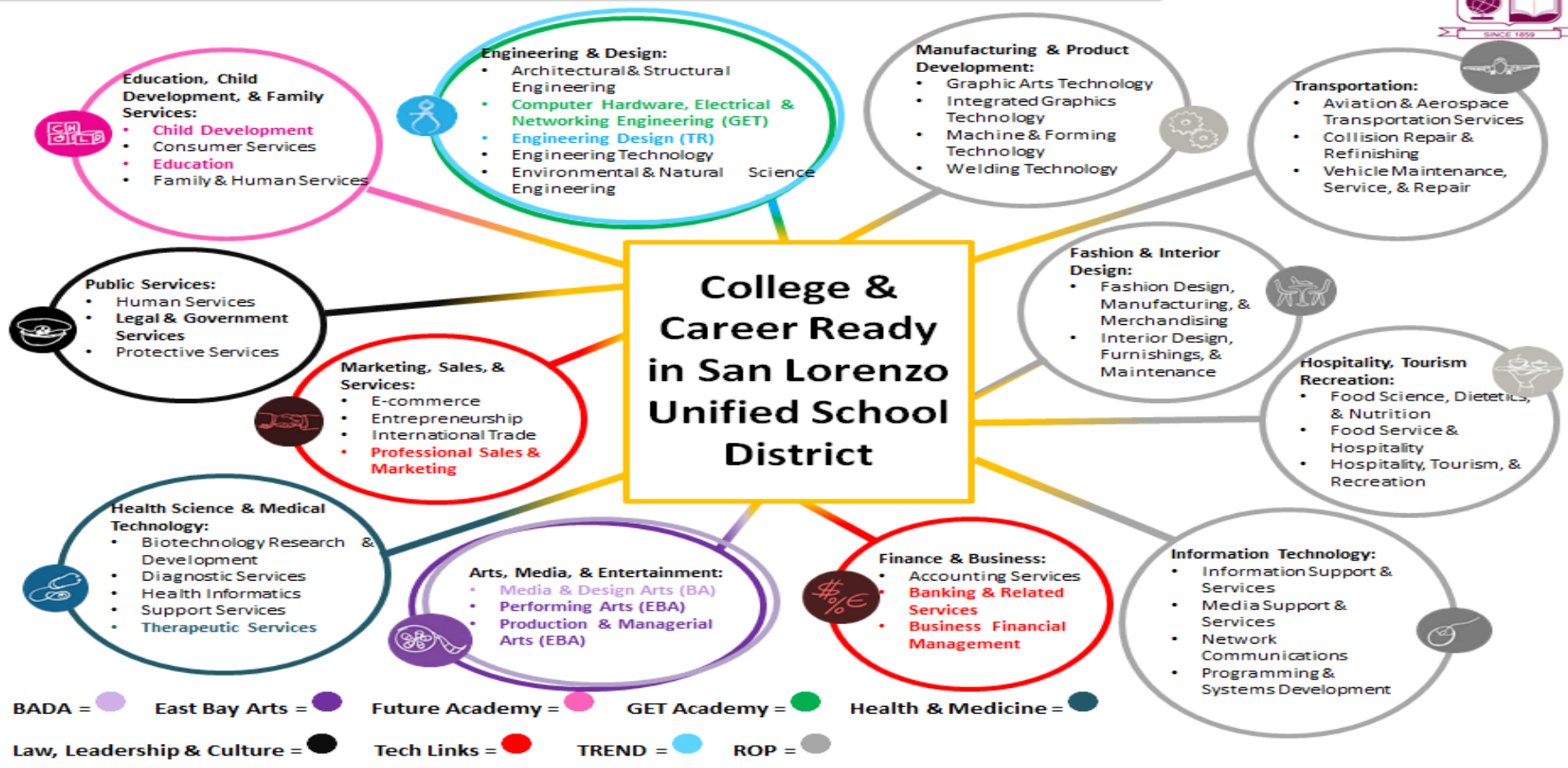
What are Small Learning Communities (SLC's)?

A more [personalized learning](#) environment to better meet the needs of students.

- College Prep
- Career Themed
- Led by a group of cross-curricular teachers
- Supports students in smaller learning environments
- Approximately 400 students in size
- Allows for teaming and development of multi-curricular projects

Eight Small Learning Communities in San Lorenzo

PATHWAYS IN SAN LORENZO UNIFIED SCHOOL DISTRICT



Vision for Small Learning Communities

The San Lorenzo Unified School District is committed to preparing each and every secondary student for college, for a career, and for civic responsibility. In order to achieve this, we have developed and implemented Small Learning Communities (SLCs) that provide multiple pathways through high school that allow all students to experience a demanding program of academic and technical study leading to a full range of post-secondary options and career opportunities.

Key Components of SLC's

- Master Schedule to support SLC/CTE cohorting
- Principals overseeing multiple accounts for compliance
- Integrated curriculum
- Work-Based Learning grades 9-12
- Experiential Visits within SLZUSD
- Leadership teams comprised of Administration, Lead Teacher, Counselor +
- Shared resources across site (i.e., tutoring, clubs, leadership, etc.)
- Student intervention

Building Regionally Coordinated Systems

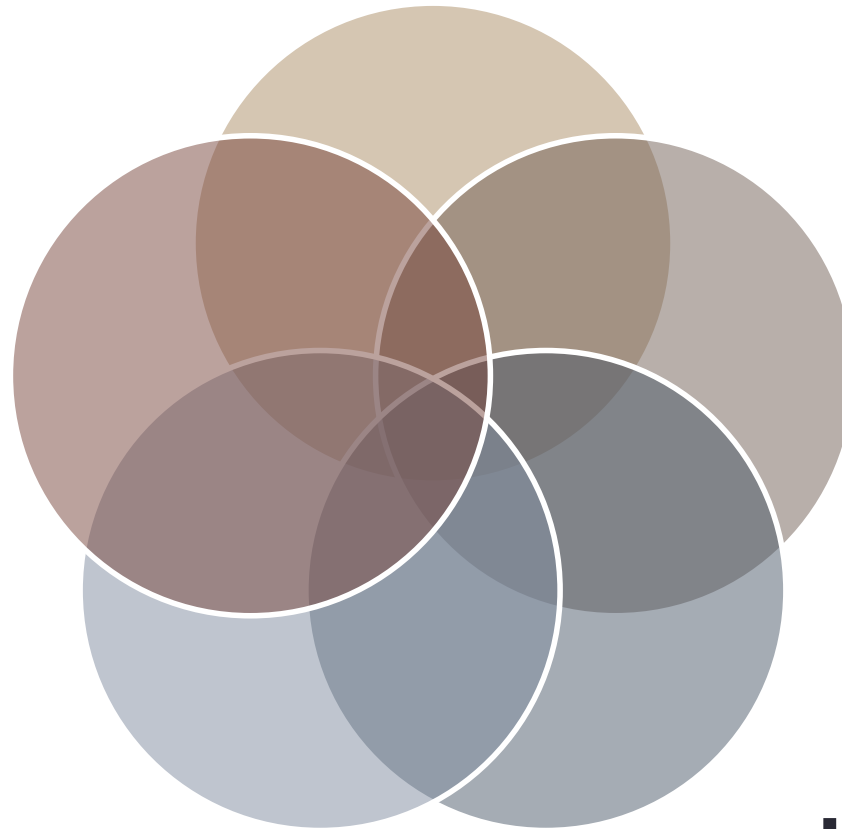
K-12

**Workforce
Investment
Boards**

**Community
Colleges**

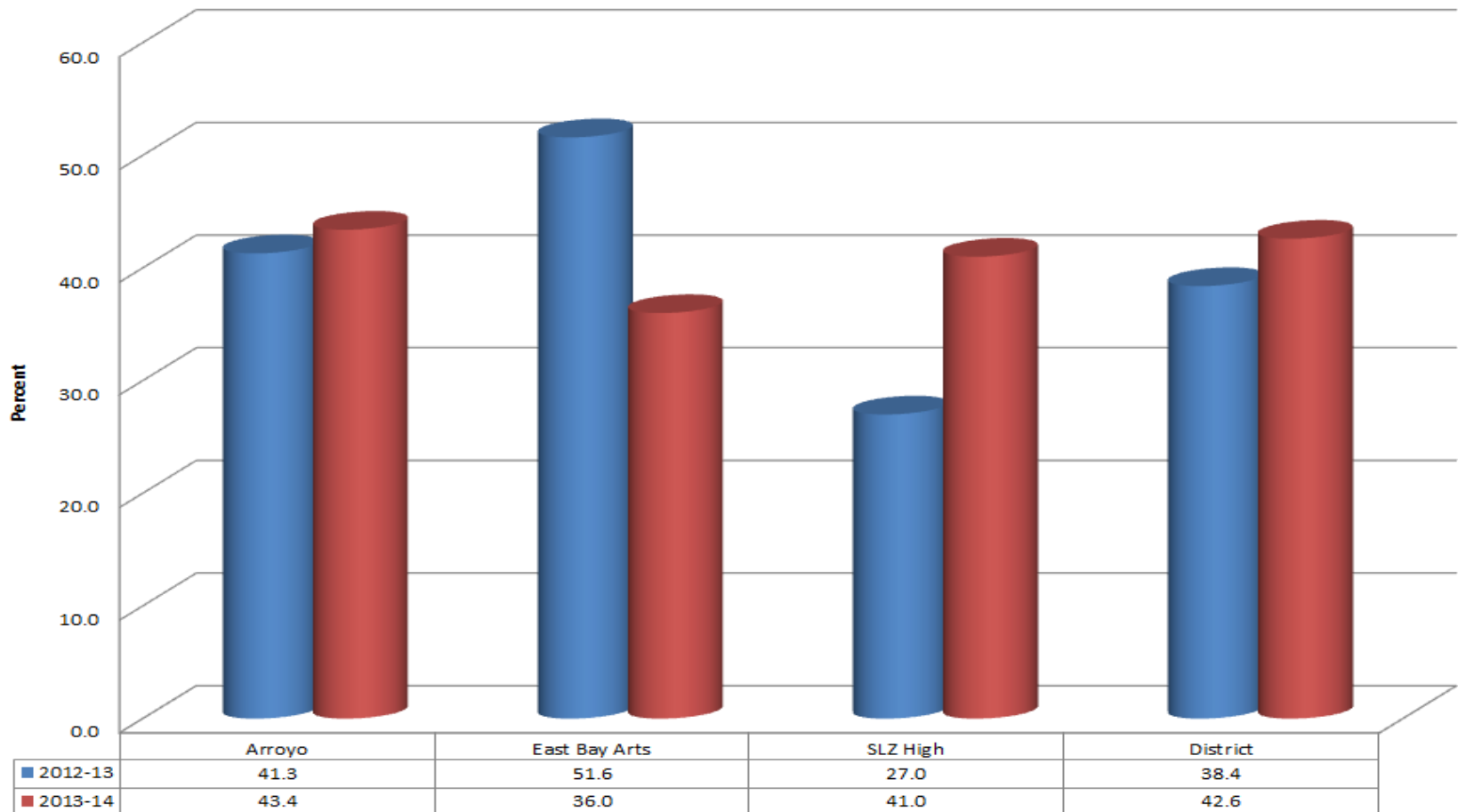
**Employer
Community**

**4-year
Universities**



College going culture at High Schools

2013 and 2014 UC/CSU Eligibility by High School



East Bay Arts - Enrollment

CDE website

			9th	10th	11th	12th
2	2015-16	64	54	49	24	191
3	2014-15	57	63	28	65	213
4	2013-14	80	52	82	61	275
5	2012-13	66	90	70	65	291
6	2011-12	99	85	82	49	315
7	2010-11	98	104	67	60	329
8	2009-10	99	76	63	39	277
9	2008-09	96	72	52	36	256
10	2007-08	77	52	45		174
11	2006-07	52	53			105

SLC Revitalization Process

- A strong focus on College and Career Readiness based on Linked Learning components
- A safe, warm and welcoming culture and climate at each SLC
- 9-12th pathway at each SLC with a range of equitable elective opportunities
- Clear and effective recruitment and information sharing
- Equitable process for placing students in SLCs