



Updating Plan Bay Area 2040

An Overview

Mark Shorett, Senior Planner, ABAG
Tom Liao, Deputy CD Director, City of San Leandro
City of San Leandro Planning Commission
November 19, 2015



METROPOLITAN
TRANSPORTATION
COMMISSION



Association of
Bay Area Governments



WHO WE ARE

Two agencies are charged with helping to plan long-range transportation, land use and housing in the nine county Bay Area. They share joint responsibility for the study and development of Plan Bay Area.



MTC is the transportation planning organization for the Bay Area. MTC is responsible for travel demand and transportation revenue forecasts and manages One Bay Area Grants (OBAG).



ABAG is the regional land use and housing planning agency and Council of Governments for the Bay Area. ABAG is responsible for population, employment, and housing forecasts.



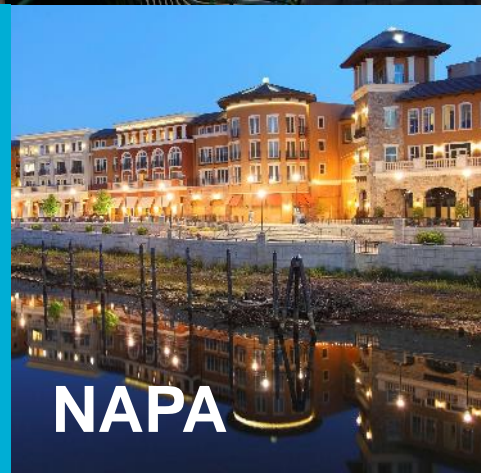
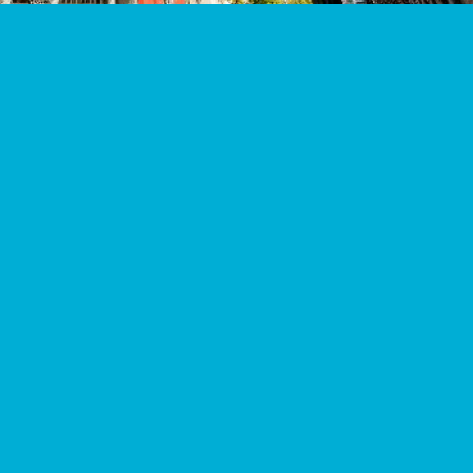
ALAMEDA



CONTRA
COSTA



MARIN



NAPA



SAN
FRANCISCO



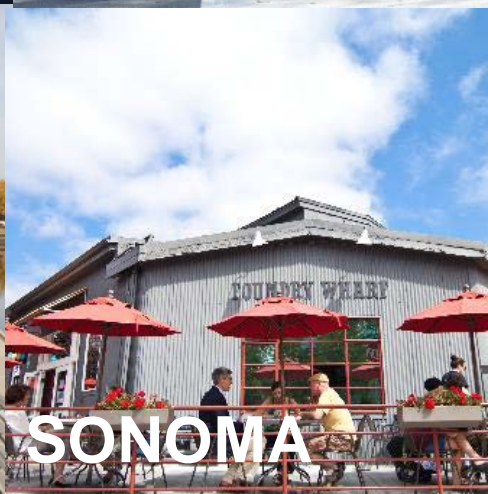
SAN MATEO



SANTA
CLARA



SOLANO



SONOMA

SHARED CONCERNS

Across the Bay Area, we share many of the same concerns about the future of our communities.



Cost of Housing



Quality of Life



Repairing Existing Infrastructure



Managing Traffic
and Improving Transit



Local Control of
Planning Decisions



Protecting the Environment

FRAMEWORK FOR THE FUTURE

Plan
BayArea
2040



Priority Development Areas (PDAs)

PDAs are locally nominated areas where amenities and services can be developed to meet the day-to-day needs of residents in a pedestrian-friendly environment served by transit.

The compact growth envisioned through these PDAs is based in large part on local aspirations and community context.

The Bay Area has a range of existing communities and the 188 adopted PDAs reflect this diversity.



Priority Conservation Areas (PCAs)

PCAs are locally-identified areas that provide important agricultural, natural resource, scenic, cultural, recreational, and/or ecological values and ecosystem functions.

The 168 PCAs across the Bay Area are areas of regional significance that represent opportunities for land conservation through purchase of land or conservation easements with willing landowners.

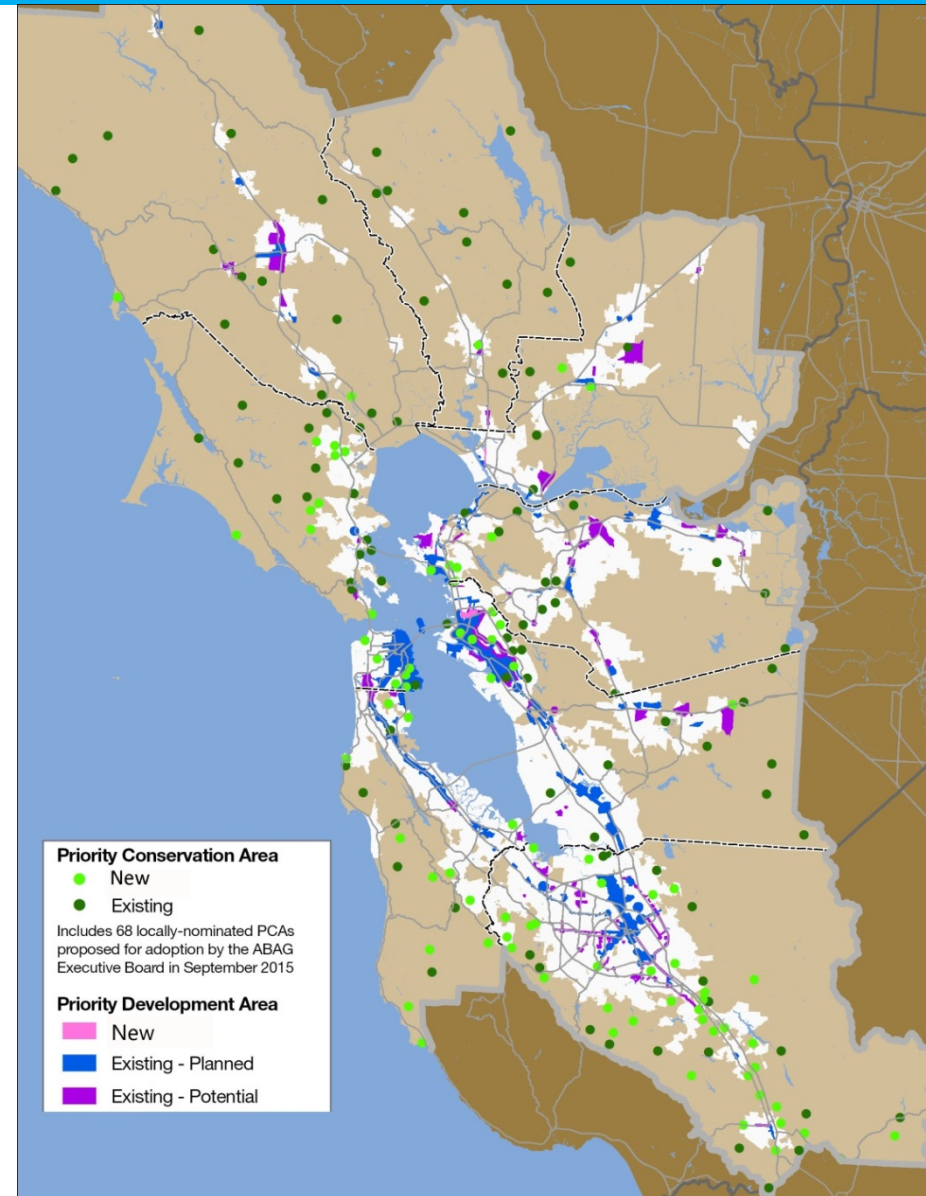


REGIONAL PDA/PCA MAP

Plan
BayArea
2040

-188 PDAs

-165 PCAs





WHAT IS PLAN BAY AREA?

Plan
BayArea
2040

Plan Bay Area is a roadmap to help Bay Area cities and counties preserve the character of our diverse communities while adapting to the challenges of future population growth.



Promotes a strong regional **economy** by providing communities with the data they need to plan for future job growth, as well as any accompanying education, housing, and transportation needs.



Informs local cities and counties in their decision-making around new **housing** developments by providing housing demand forecasts.



Supports strategic **transportation** investments that aim to decrease traffic congestion, improve travel options, and reduce pollution both locally and regionally.

BAY AREA INVESTMENTS

Plan
BayArea
2040



Land Use and Housing

Plan Bay Area's PDA-focused growth strategy guides **housing and employment investments** toward existing and planned transit. This enables the development of accessible and vibrant, complete communities while preserving and creating enhanced connection to the Bay Area's cherished natural environment, including PCAs.



Transportation

With Plan Bay Area, MTC continues its longstanding **Fix-It-First Policy** by dedicating funds to maintaining the region's existing transportation system across our urban, suburban, and rural communities.

PLANNING ALIGNMENT

Plan
BayArea
2040

Plan Bay Area aligns planning objectives of state and regional planning policies, creating consistency among:

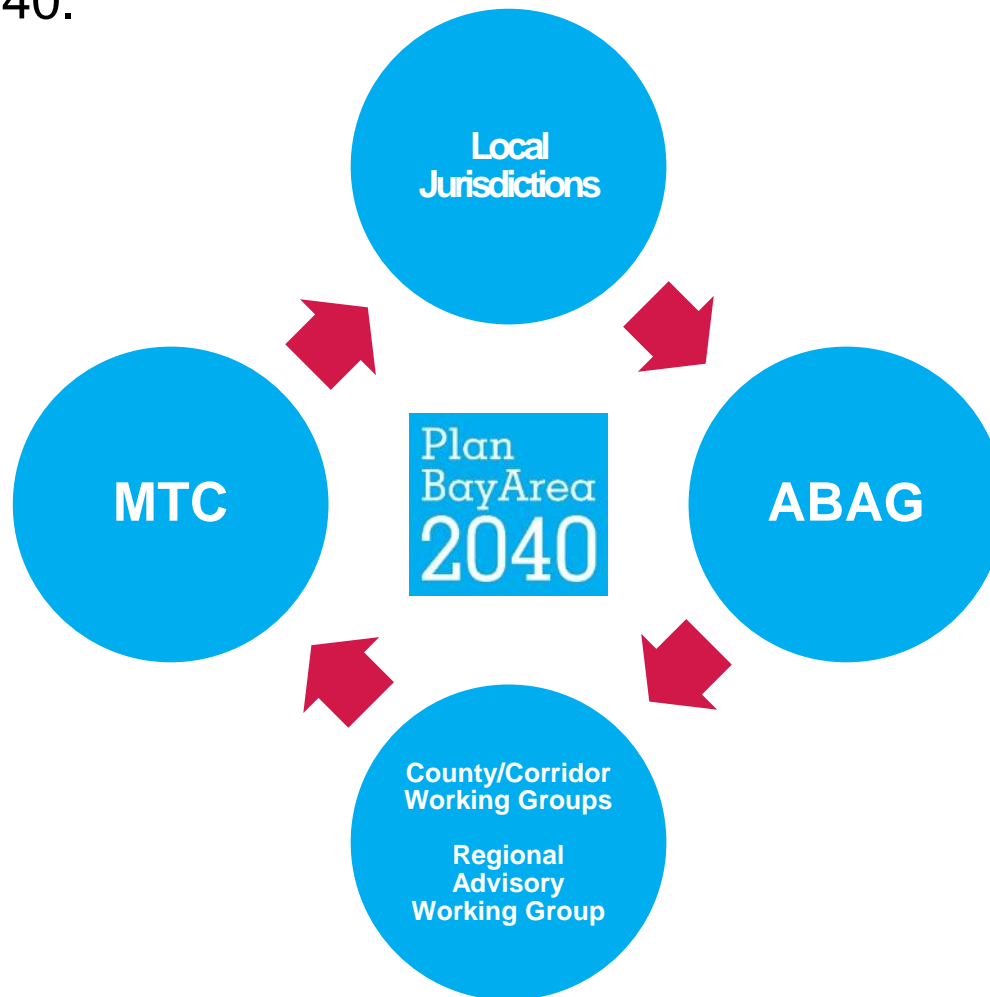
- Regional Transportation Plan (RTP)
- Regional Housing Needs Allocation (RHNA)
- Priority Development Areas (PDAs)
- Priority Conservation Areas (PCAs)





PARTNERSHIPS

Engagement with local governments is critical to the success of Plan Bay Area 2040.



STRATEGIC UPDATE

Plan
BayArea
2040

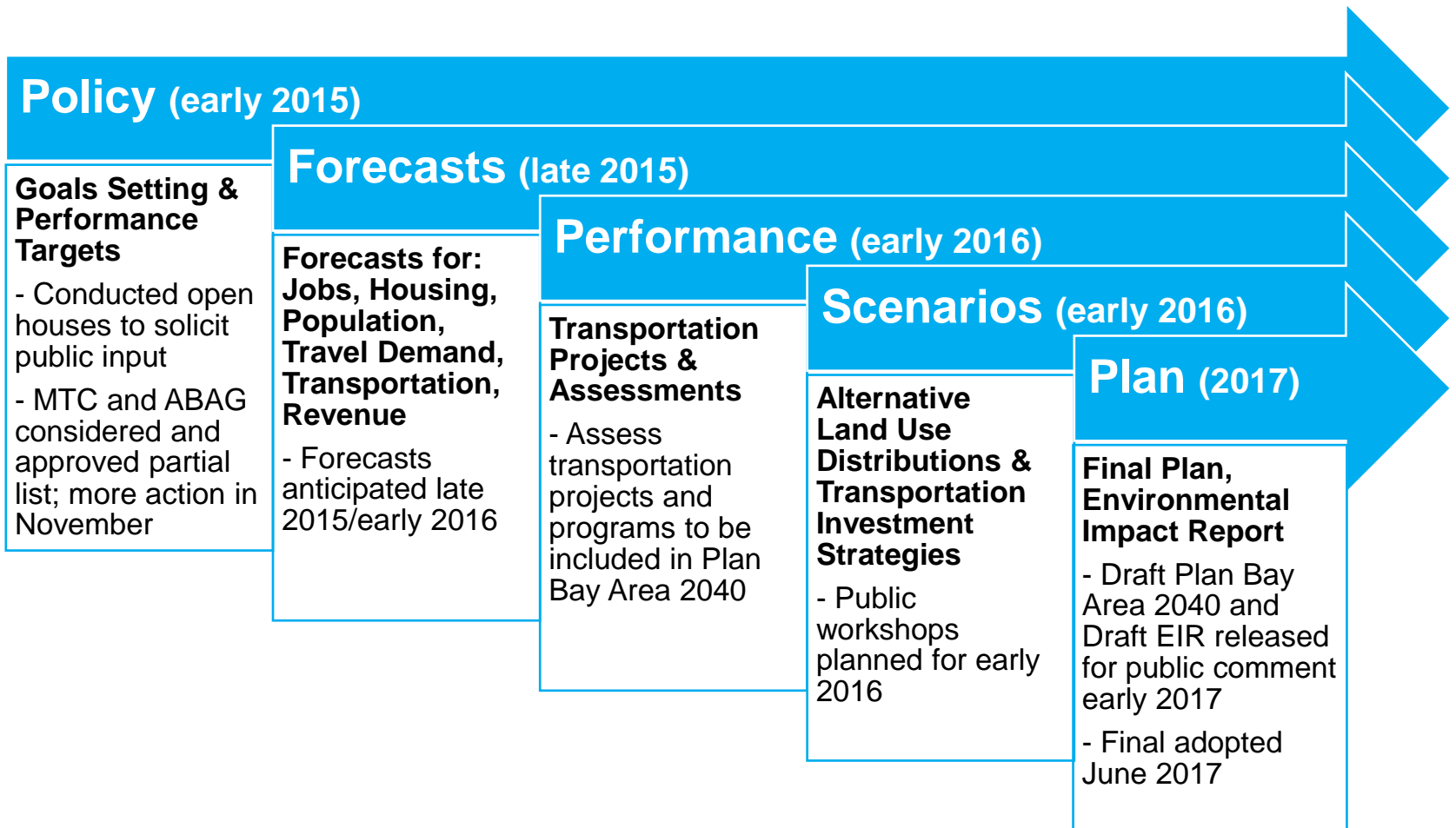
Important things to note about Plan Bay Area 2040:

- Updated every 4 years
- We're in the middle of a strategic, limited update to be approved in 2017
- No Regional Housing Need Allocation (RHNA) update until 2021 RTP/SCS





MAJOR MILESTONES



[illegible]



NEXT STEP: SCENARIOS

- Scenarios are developed to show the different approaches we can take to managing our region's growth. Each scenario represents a different vision for how the Bay Area could change over time to accommodate expected growth while meeting our goals for a more prosperous, sustainable, and equitable region.
- Each scenario combines different policy, land use, and transportation investment strategies, resulting in potential differences in the region's development pattern and transportation system.



SCENARIO DEVELOPMENT PROCESS

Plan
BayArea
2040





MAILESTONES FOR LOCAL JURISDICTIONS

Plan
BayArea
2040

Scenario Development Process:

- Scenario concepts (Late 2015)
- Draft scenarios (Early 2016)
- Public workshops (April 2016)
- Preferred Scenario (May 2016)
- Adoption of Preferred Scenario (June 2016)

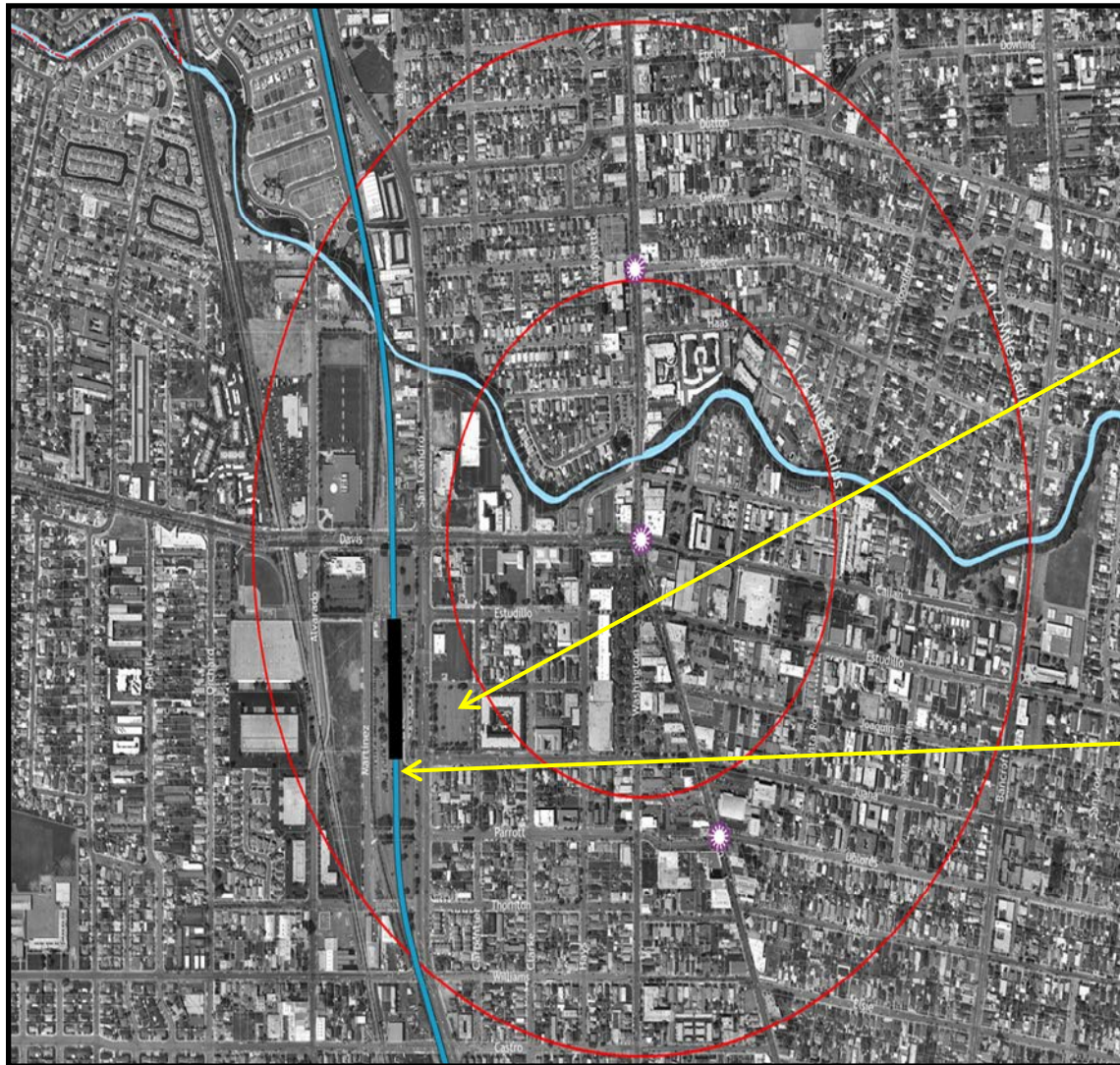
Prioritizing Transportation Investments:

- Transportation revenue forecast (Summer/Fall 2015)
- Operations and maintenance need assessments (Summer/Fall 2015)
- Project performance assessment (Fall 2015)



Downtown Priority Development Area (PDA)

Plan
BayArea
2040



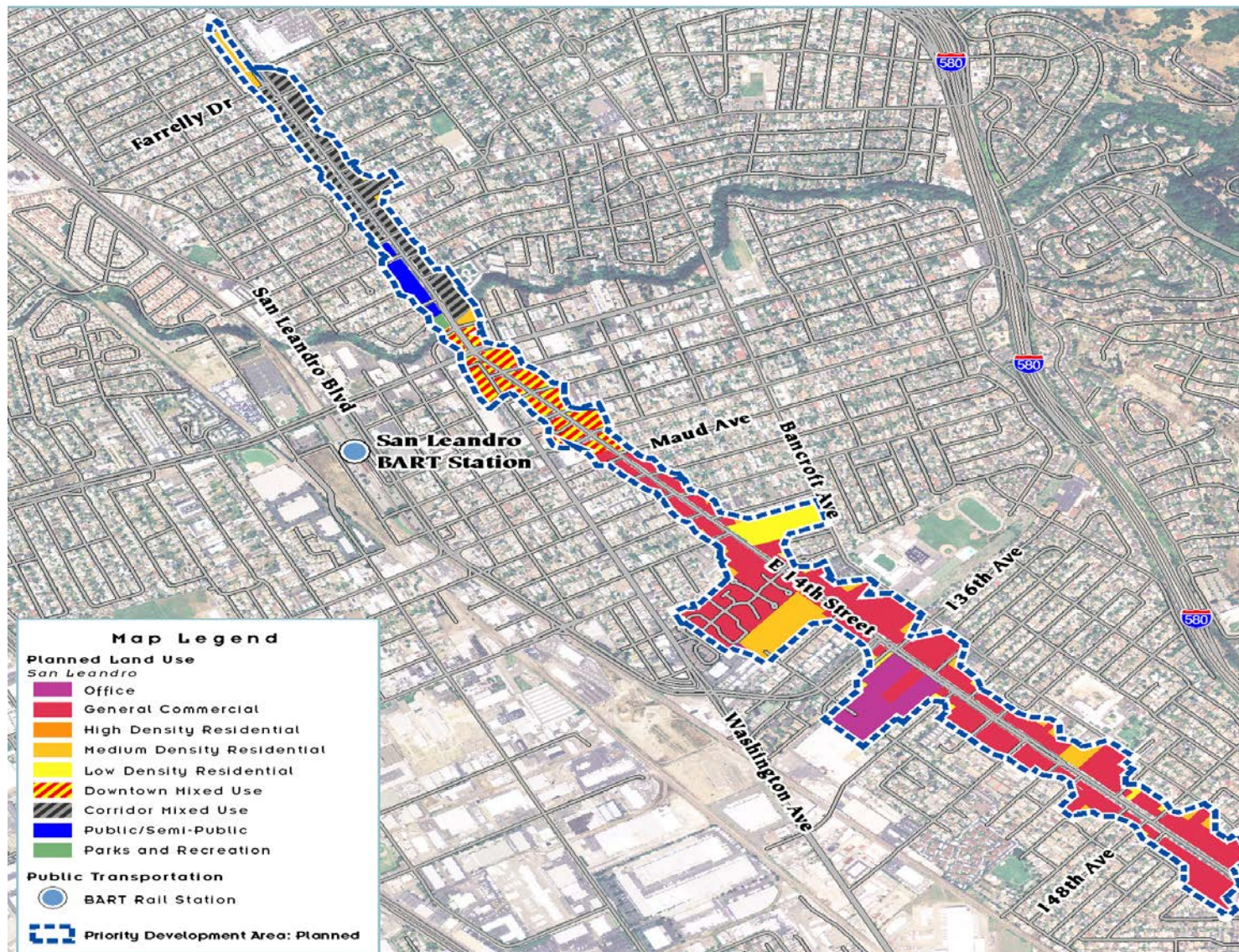
Marea Alta



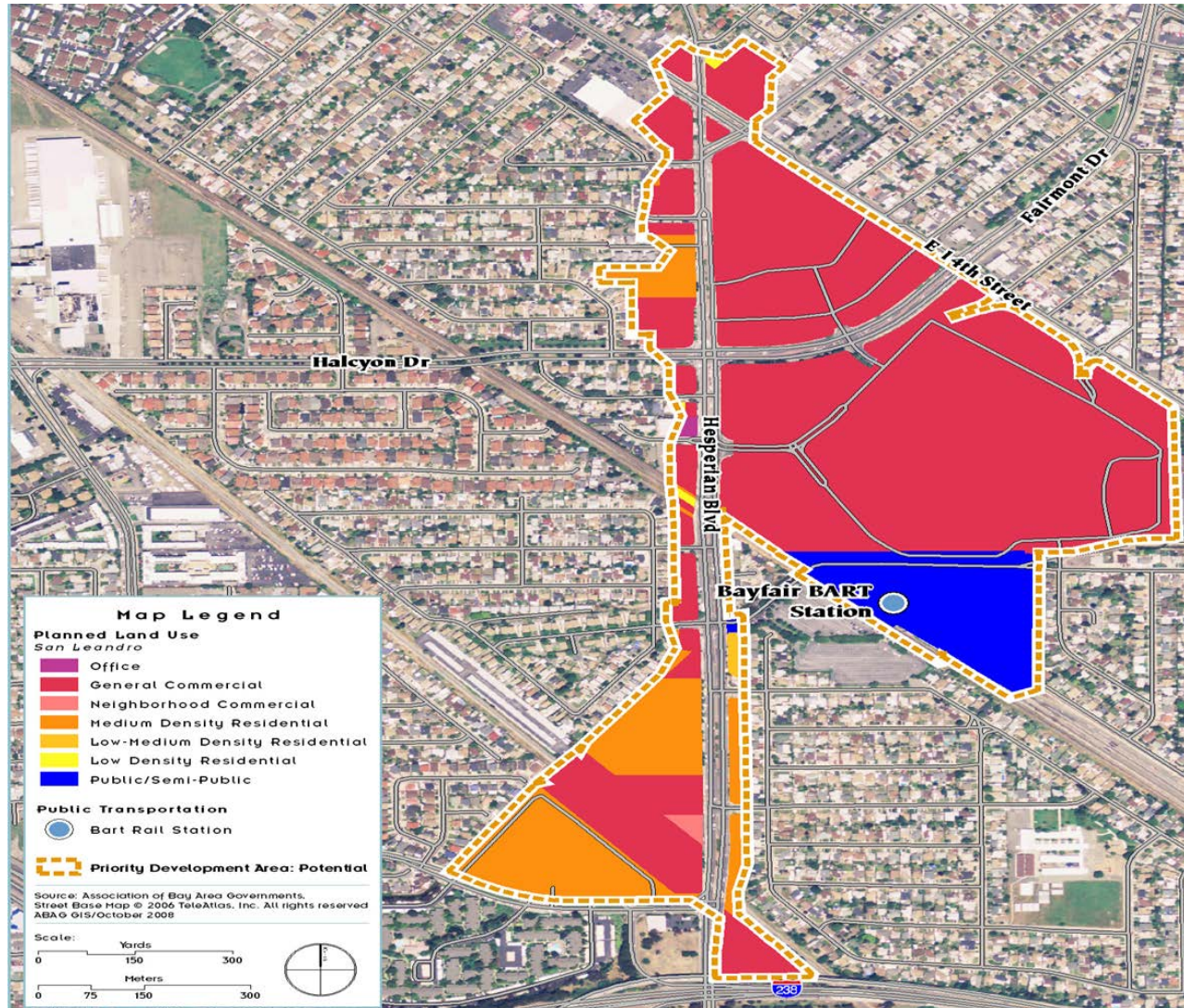
San Leandro Tech Campus

East 14th Street PDA

Plan
BayArea
2040

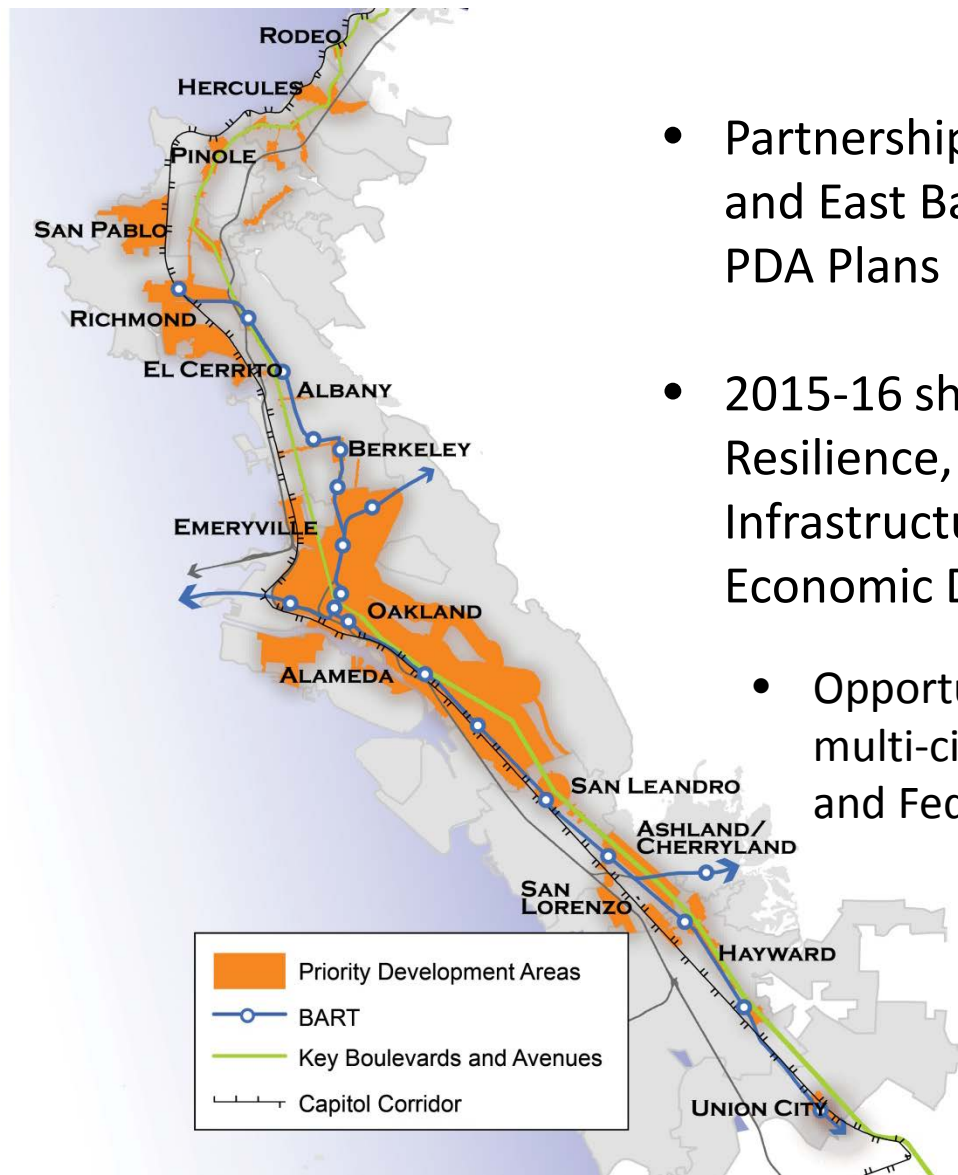


Bay Fair Potential PDA



- City awarded MTC Planning grant in 2014
- TOD Specific Plan process underway
- Community Advisory Committee selection underway
- TOD Plan expected completion date is Spring 2017

East Bay Corridors Initiative



- Partnership between San Leandro and East Bay jurisdictions to local PDA Plans
- 2015-16 shared priorities include: Resilience, Community Infrastructure & Placemaking, and Economic Development
- Opportunity to obtain funding for multi-city projects through State and Federal sources

- 1) What are the most urgent land use and transportation issues for San Leandro, and how can the Plan address them?
- 2) Are there critical issues beyond the scope of the Plan that need more regional collaboration?



[Facebook.com/PlanBayArea](https://www.facebook.com/PlanBayArea)



[@PlanBayArea](https://twitter.com/PlanBayArea)

STAY INVOLVED

Plan
BayArea
2040



Subscribe to our mailing list to receive updates about Plan Bay Area and other regional initiatives at PlanBayArea.org



Contact MTC and ABAG directly to provide your comments in writing at info@planbayarea.org or join the discussion online on PlanBayArea.org or Facebook and Twitter.



Find an archive of past planning documents, frequently asked questions, regional planning agency calendars, and up-to-date planning information at PlanBayArea.org



Ken Kirkey
Planning Director
kkirkey@mtc.ca.gov
(510) 817-5790

Miriam Chion
Planning & Research
Director
miriamc@abag.ca.gov
(510) 464-7919



[Facebook.com/PlanBayArea](https://www.facebook.com/PlanBayArea)



[@PlanBayArea](https://twitter.com/PlanBayArea)