

Community Pipeline Safety Initiative

San Leandro City Council

April 4, 2016



Improving Pipeline Safety and Reliability

- PG&E's top priority is the safety of our customers and communities – we are testing, studying and upgrading our gas system, including:
 - **Hydrostatic pressure testing** which verifies the pipeline's strength and safe operating pressure
 - **Internal pipe inspection robots** to check for signs of corrosion
 - **Valve automation** to allow faster response during gas emergencies
 - **Leak survey** of our entire gas pipeline system more frequently
 - **Aerial and ground patrols** to identify any excavations, signs of construction and other potential safety concerns



Program at a Glance

WHAT WE'RE DOING



Checking the area above the gas transmission pipeline for trees and structures that pose an emergency access or safety concern



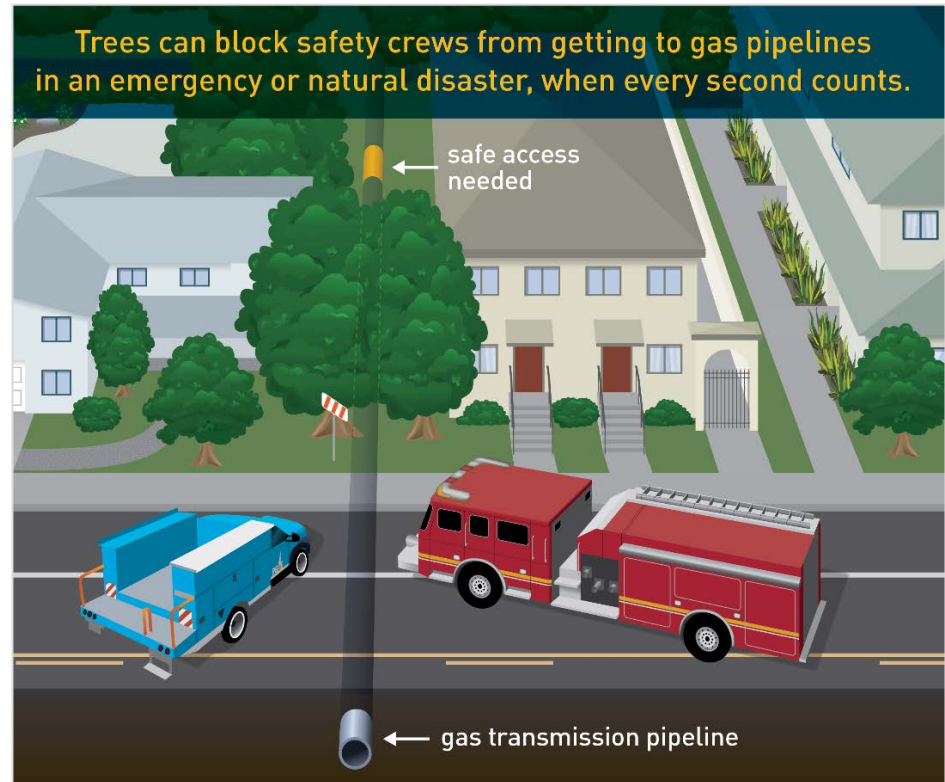
Helping to ensure immediate access for safety crews, and preventing potential damage to the pipe



Working with our customers and communities where a safety risk has been identified to develop shared solutions



Planting new trees at a safe distance from the pipeline and restoring the area to preserve the natural beauty of our communities



Working with First Responders

“The San Ramon Valley Fire Protection District’s top priority is keeping our community safe. The gas safety work PG&E is undertaking across the East Bay is critical and will make our communities safer for first responders and the public.”

Paige Meyer, Fire Chief, San Ramon Valley Fire District

“The work PG&E is doing now to improve gas safety will help our first responders better access pipelines in the event of an emergency.”

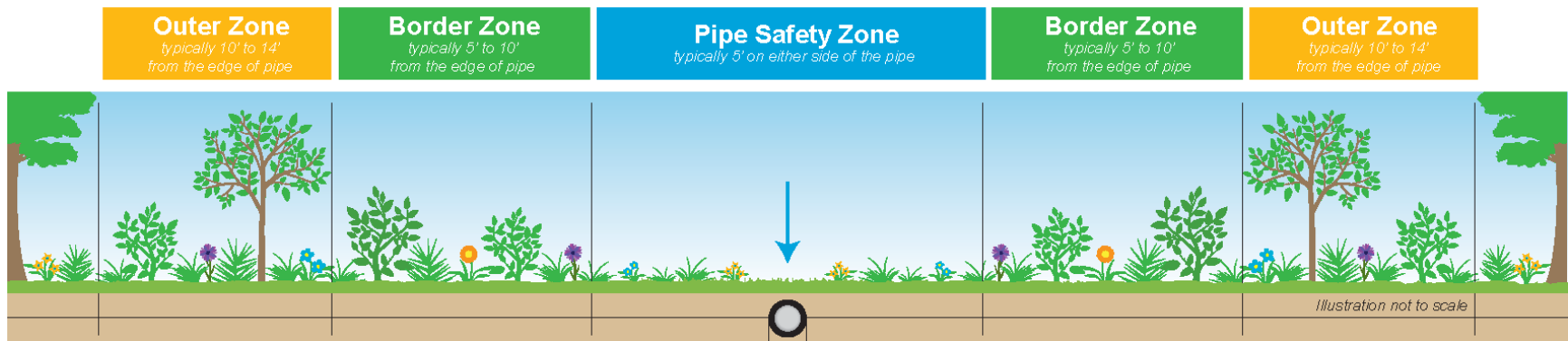
Scott Jalbert, Fire Chief, San Mateo County Fire Department and the Coastside Fire Protection District



First responders depend on immediate access in an emergency

Guide to Safe Landscaping

Making sure the right plants and trees are located in the right location adds to the safety and natural beauty of your community



Pipe Safety Zone	Lawns, flowers, low-profile grasses and low-growing herbaceous plants work well within the Pipe Safety Zone.
Border Zone	Small to medium shrubs with a trunk or main branch less than 8" in diameter at full maturity work well within the Border Zone. Diameter is measured 4.5 feet above the ground.
Outer Zone	Large shrubs and small trees with a trunk or main branch less than 36" in diameter at full maturity work well within the Outer Zone. Diameter is measured 4.5 feet above the ground.

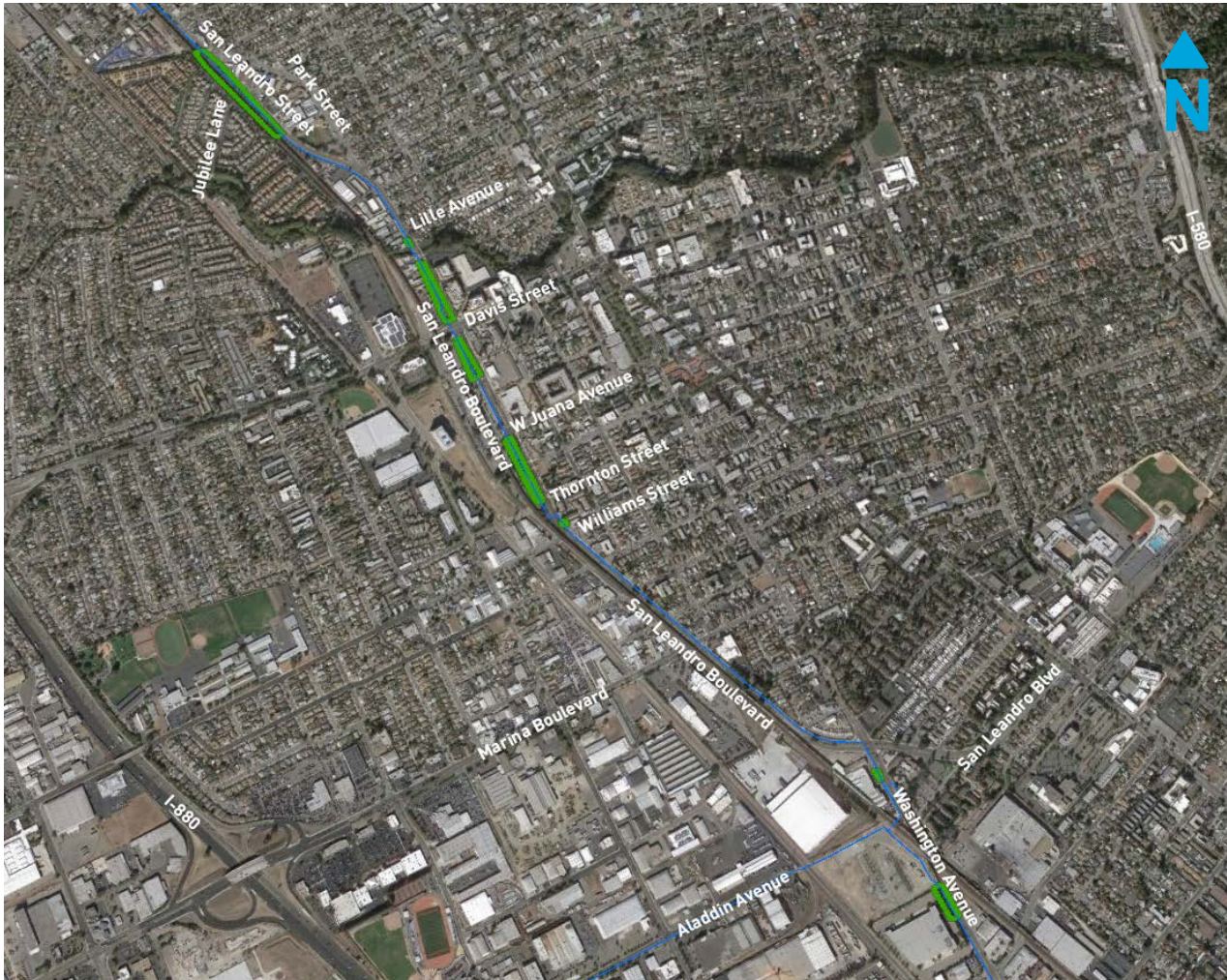
Please note easement widths can vary and the above represents best practices and guidance for safe landscaping near gas pipelines.



Tree-by-Tree Review

- We understand how important trees are to your community and the environment
- To ensure we are only replacing trees that pose an emergency access or safety concern, we conduct a review of all trees near the gas pipelines
- The review is completed by gas safety experts and involves analyzing factors such as tree height, species and distance from the pipe
- We share the results with the city or property owner and, together, work to develop a path forward
- If a tree poses a safety concern and needs to be replaced, PG&E works together with the property owner to offer replacement trees and restore the area



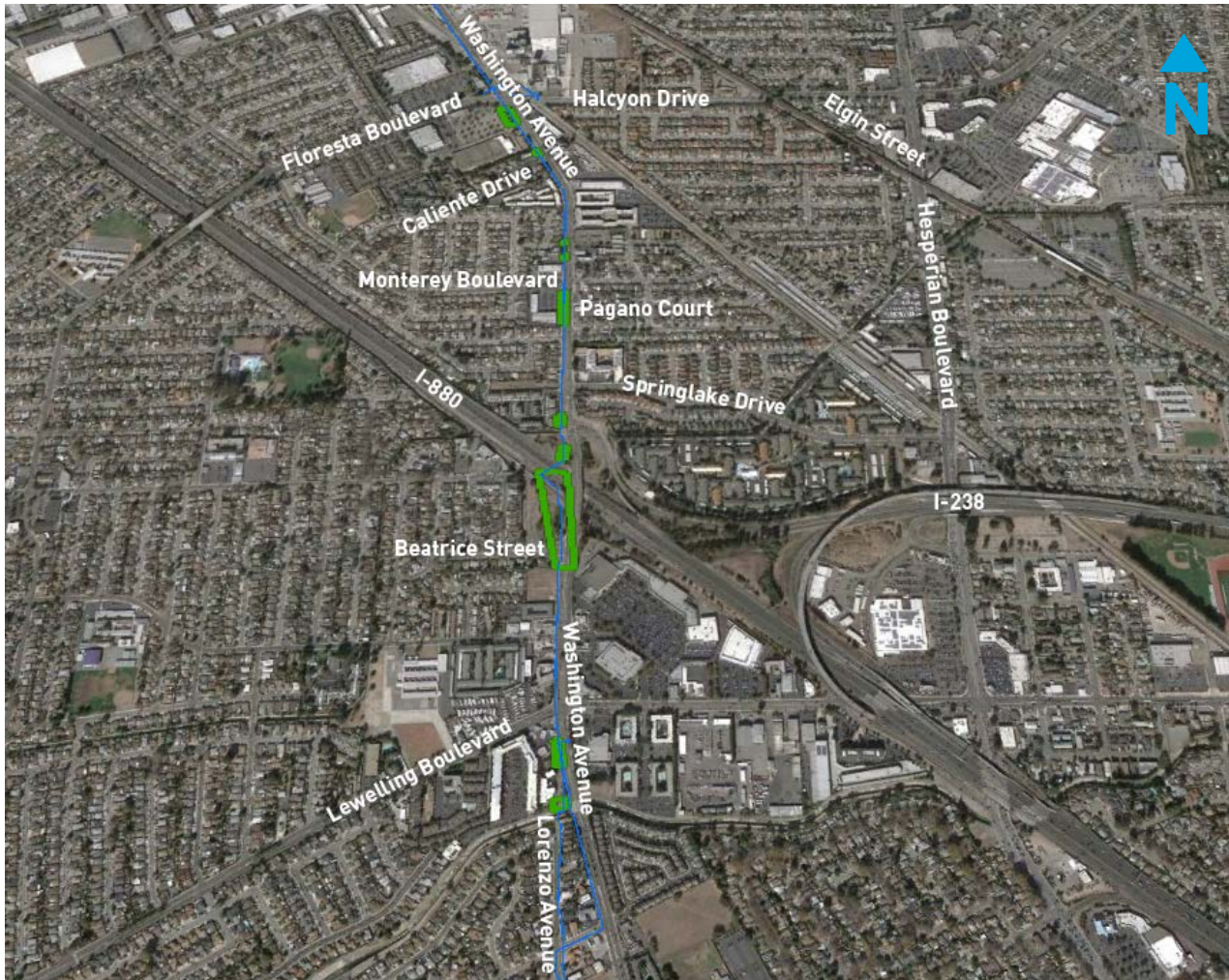
Proposed Work Locations




-  Vegetation Project Area
-  Gas Transmission Line

PG&E Critical Infrastructure Information. Facilities to be operated by PG&E personnel only. Pipeline locations are approximate and for illustrative purposes only. Data subject to updates. Call 811 before you dig.

Proposed Work Locations



 Vegetation Project Area

 Gas Transmission Line

PG&E Critical Infrastructure Information. Facilities to be operated by PG&E personnel only. Pipeline locations are approximate and for illustrative purposes only. Data subject to updates. Call 811 before you dig.

Community Partnership and Outreach

- It is important to us that our customers and communities fully understand and support this safety work
- Our outreach includes:
 - Meeting with city leaders to discuss the safety risks and work together to plan for gas safety work in public areas
 - Communicating about gas pipeline safety and the planned work to nearby residents prior to any work taking place
 - Contacting private property owners regarding any safety work proposed for their property
- We will not move forward with any planned work until we have a signed agreement in place with the customer



Contact Information

- For questions regarding the upcoming pipeline safety work, please contact Tom Guarino, Local Government Relations Representative, at **510-874-2245** or by email at **tom.guarino@pge.com**
- For more information, visit us at **pge.com/GasSafety**



Thank You

