

# San Leandro Complete Streets Implementation Project



A presentation to the Facilities and Transportation Committee  
City of San Leandro  
November 3, 2015

# Meeting Agenda

2

1. Current Status and Goals
2. Complete Streets Definition
3. Discuss current efforts
4. Next steps and project schedule

# 1. Current Status

3

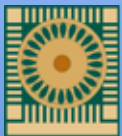




# Project Team

4

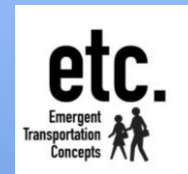
## Project Management Team



CITY OF  
**HAYWARD**  
HEART OF THE BAY



## Consultant Team



- Build internal, external and cross-jurisdictional stakeholder consensus on
  - Key gaps between existing practices and Complete Streets concepts; and
  - Necessary implementation steps to address these gaps
- Develop tools and processes for San Leandro that also have countywide applicability

## 2. What are Complete Streets?

Complete Streets are safe, comfortable, and convenient for travel for everyone, regardless of age or ability – motorists, pedestrians, bicyclists, and public transportation riders.



# Complete Streets Serve All Users

- Pedestrians
- Bicyclists
- Transit Users
- Motorists
- Goods Movement
- People with Disabilities
- People of All Ages and Abilities
- Emergency Responders





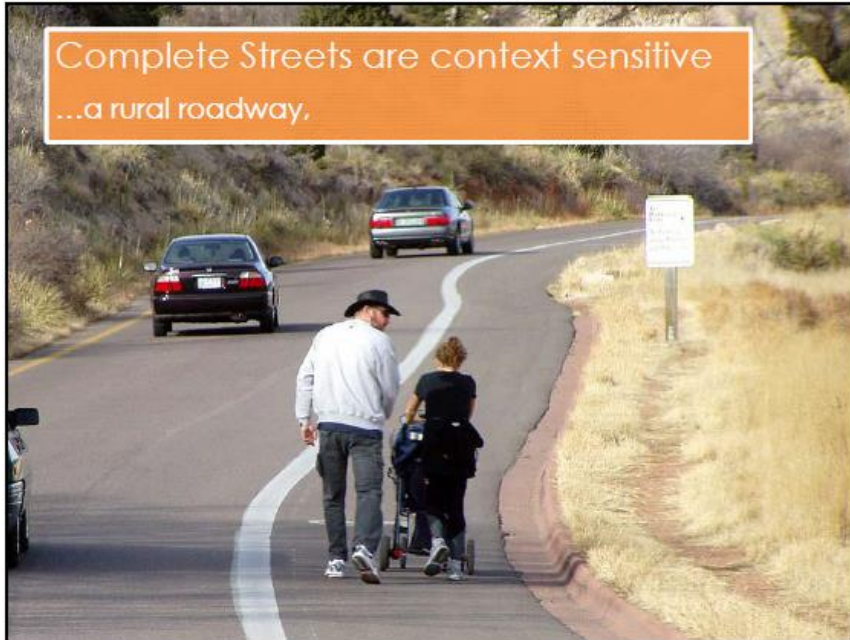
Complete Streets are context sensitive  
A major arterial will look different...



Complete Streets are context sensitive  
...than a neighborhood street,



Complete Streets are context sensitive  
...a rural roadway,

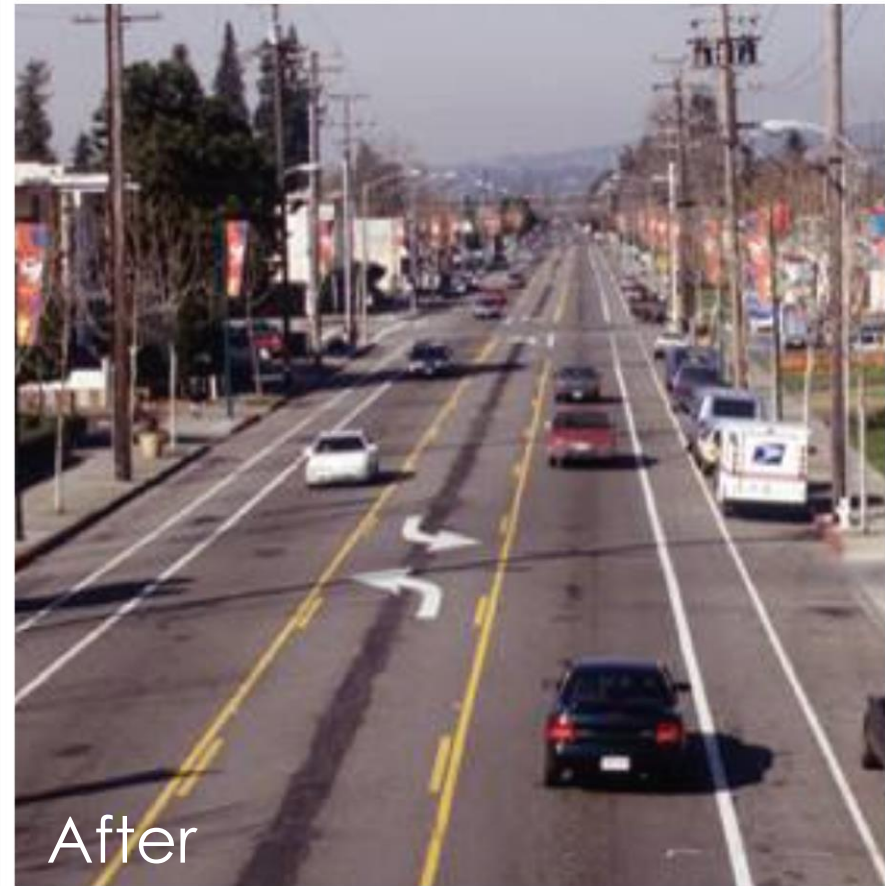


Complete Streets are context sensitive  
...an industrial route



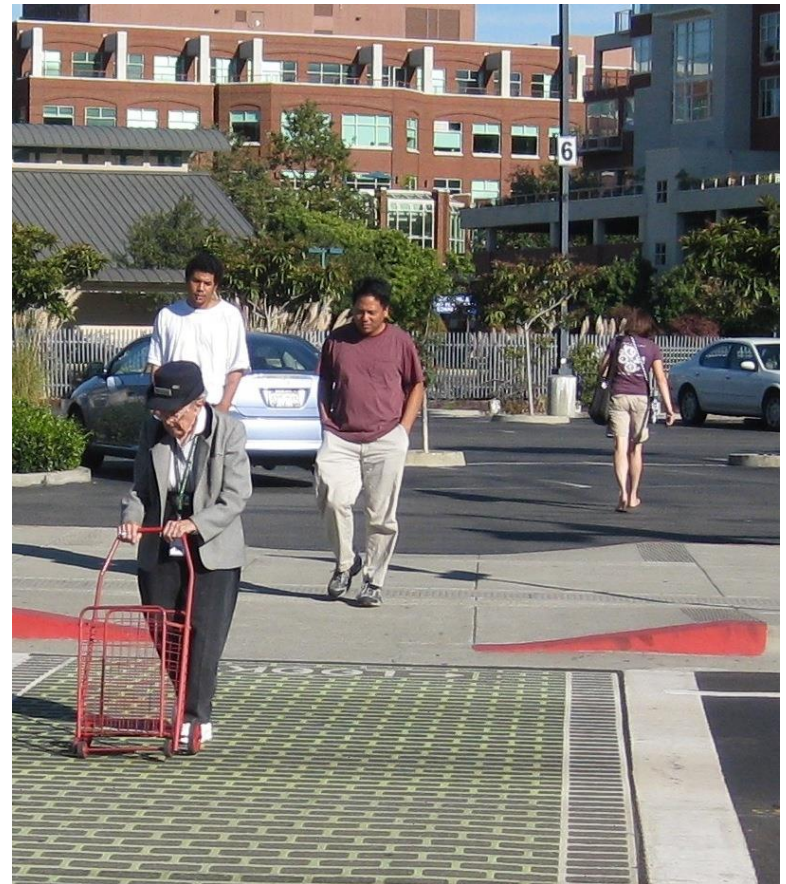


# San Leandro Road Diet



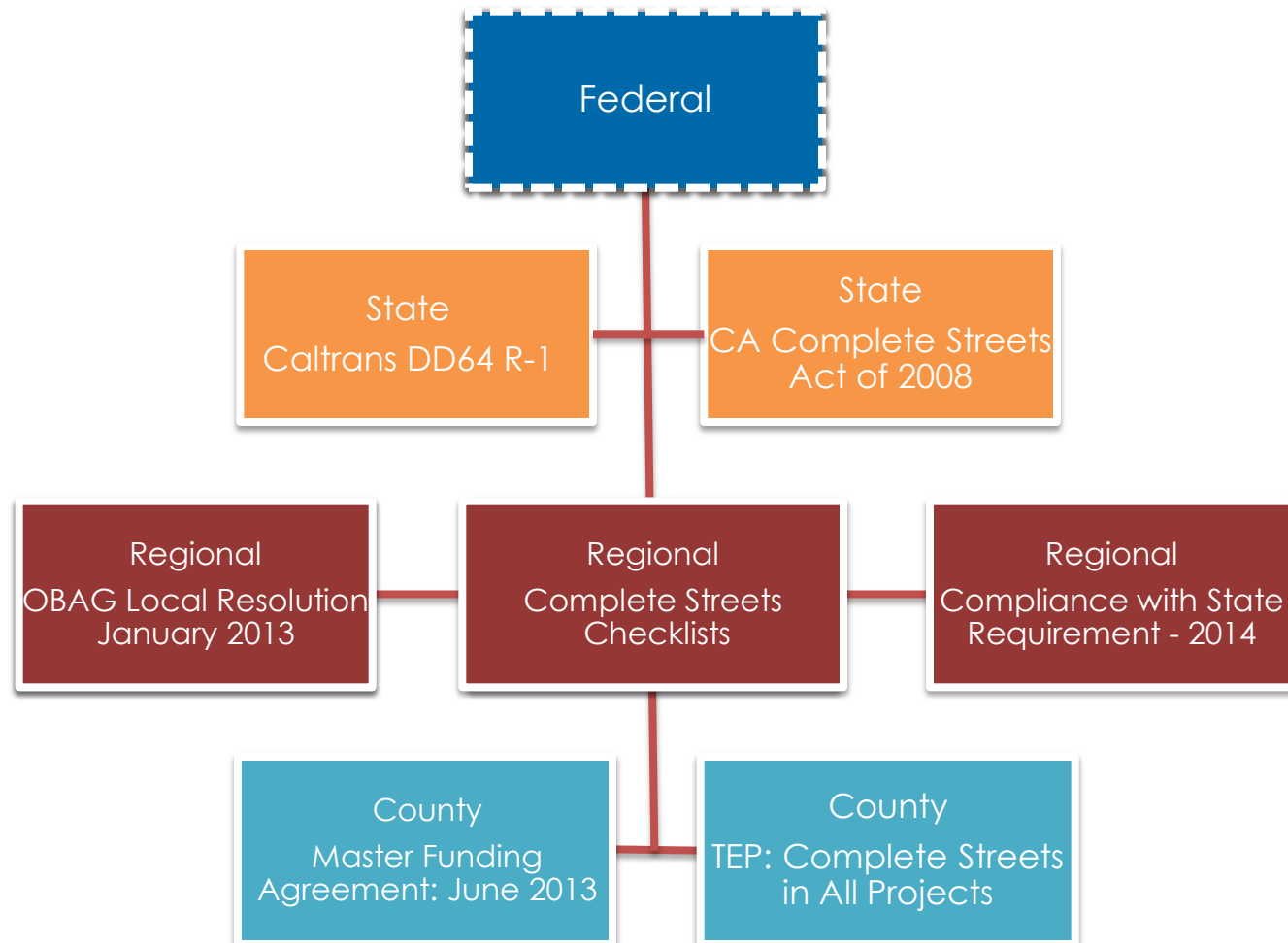
# Benefits of Complete Streets

- Improved safety
- Increased mobility for all users and modes
- Improved air and water quality
- Improved public health
- Enhanced economic competitiveness
- Increased livability



# State, Regional, and County Policy Requirements

11





# 3. Complete Street Implementation Tools

12

**Develop Complete Streets Design Guidelines to ensure that San Leandro street designs consider the full range of users on every street and accommodate these users wherever possible**

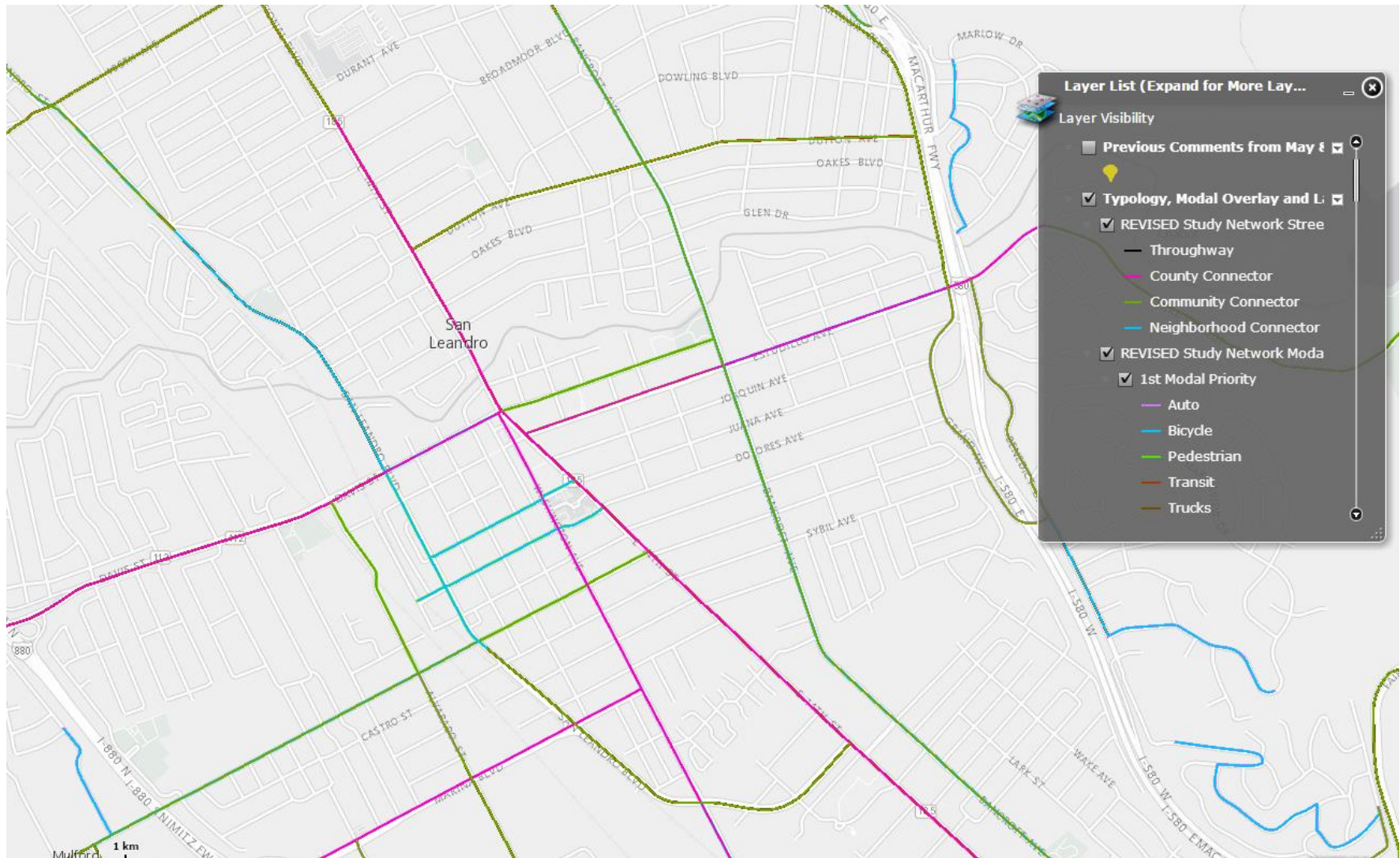
**Develop Complete Streets Project Checklists/Project Delivery Flow Charts to assist project managers in the successful application of Complete Streets Design Guidelines to all projects**



Sources: National Complete Streets Coalition, Walkable and Livable Communities Institute

# Multimodal Complete Street Typology

13



COMPLETE STREETS IMPLEMENTATION

# Standard Operating Procedures

14

## Example Standard Operating Procedure Framework (ITE's Designing Walkable Urban Thoroughfares)

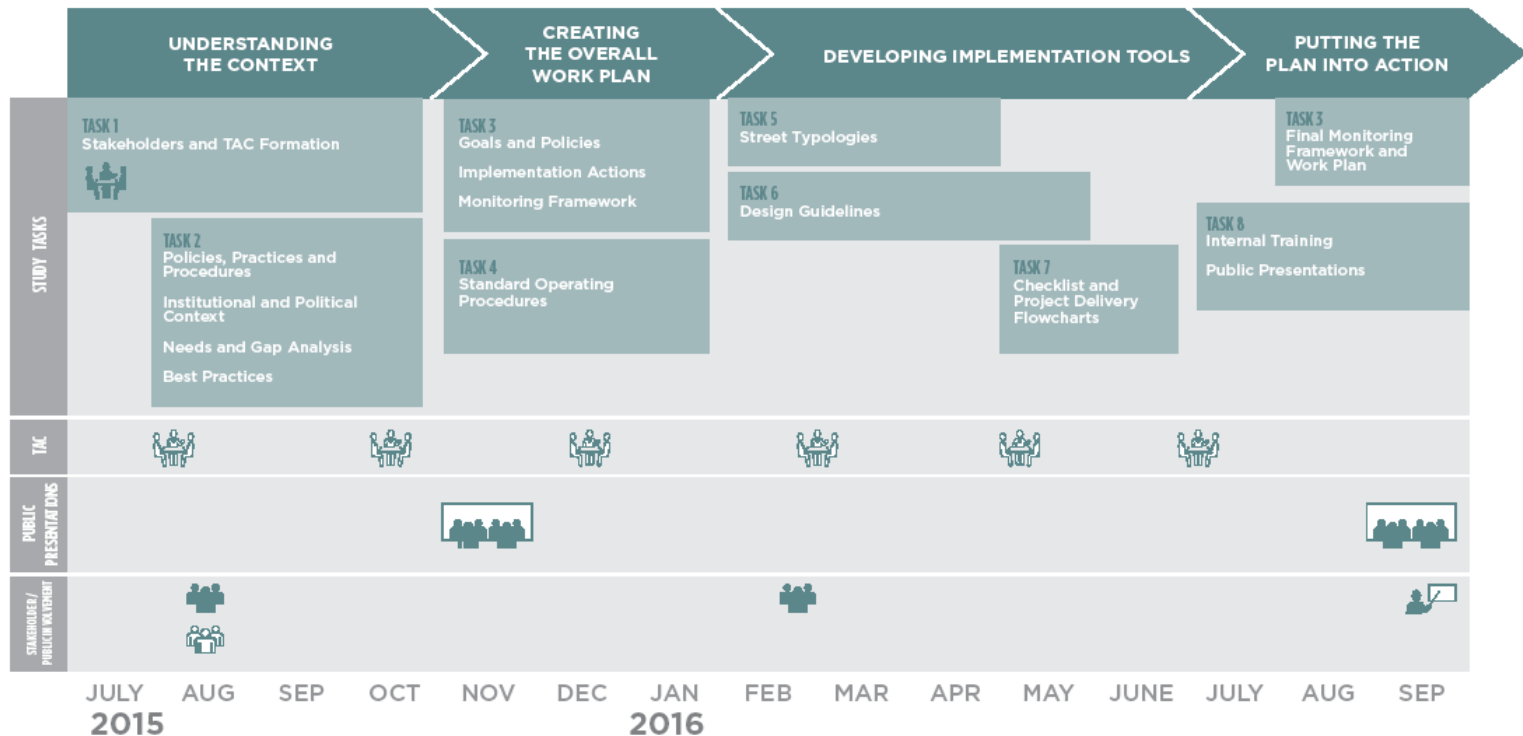
User	Responsibilities
All Users	<ul style="list-style-type: none"><li>• Participate in preparing transportation plans;</li><li>• Help establish community vision and project goals and objectives; and</li><li>• Help develop and evaluate thoroughfare concepts, alternatives and impacts.</li></ul>
Transportation Planner	<ul style="list-style-type: none"><li>• Develops and evaluates long-range transportation plans;</li><li>• Helps establish community vision and project goals and objectives;</li><li>• Develops and evaluates thoroughfare concepts, alternatives and impacts; and</li><li>• Works with public, stakeholders and multidisciplinary teams to integrate transportation and land use planning.</li></ul>
Traffic/Civil Engineer	<ul style="list-style-type: none"><li>• Prepares purpose and need for transportation projects;</li><li>• Develops initial thoroughfare concepts and prepares detailed evaluations of these concepts;</li><li>• Identifies design controls and parameters, constraints and trade-offs;</li><li>• Works with public, stakeholders and multidisciplinary teams to resolve design challenges; and</li><li>• Prepares preliminary and final engineering plans.</li></ul>
Land Use Planner	<ul style="list-style-type: none"><li>• Develops long-range land use plans;</li><li>• Helps establish community vision and goals and objectives for neighborhoods and corridors;</li><li>• Works with multidisciplinary team to establish and identify context;</li><li>• Formulates land use policy that affects thoroughfare design; and</li><li>• Establishes land use regulations (subdivision, zoning and so forth) that guide context.</li></ul>
Design Professional (Architect, Urban Designer, Landscape Architect)	<ul style="list-style-type: none"><li>• Designs integral elements of the thoroughfare and its surrounding context including buildings, sites and streetscape features;</li><li>• Works with public, stakeholders and multidisciplinary teams to resolve design challenges; and</li><li>• Prepares environmental assessments; identifies impacts and mitigation measures.</li></ul>
Stakeholders (Elected Officials, Appointed Commissioners, Developers, Local, Regional and State Agencies, Citizens)	<ul style="list-style-type: none"><li>• Provide local and regional input and leadership;</li><li>• Provide funding and financing mechanisms for development of context and thoroughfares;</li><li>• Have jurisdiction and approval authority over plans and designs; and</li><li>• Work closely with the general public to achieve community acceptance of projects.</li></ul>



# Implementation Schedule

15

## PROJECT SCHEDULE



Kick-Off Meeting



Technical Advisory Committee Meeting



Internal Stakeholder Interviews



External Stakeholder Interviews



Training



Public Presentations

CENTRAL COUNTY COMPLETE STREETS IMPLEMENTATION



COMPLETE STREETS IMPLEMENTATION