



hpa, inc.  
383 4th. street, suite #101  
oakland, ca  
94607  
tel: 949-863-1770  
fax: 949-863-0851  
email: hpa@hparchs.com



19300 Hamilton Ave. suite 200  
Gardena, CA 90248

tel: (310) 354-2460

Project:

2000 MARINA BLVD.

City of San Leandro  
CA

Consultants:

CIVIL  
STRUCTURAL  
MECHANICAL  
PLUMBING  
ELECTRICAL  
LANDSCAPE  
FIRE PROTECTION  
SOILS ENGINEER

Title: OVERALL AND  
ENLARGED FLOOR PLAN

Project Number: 16172

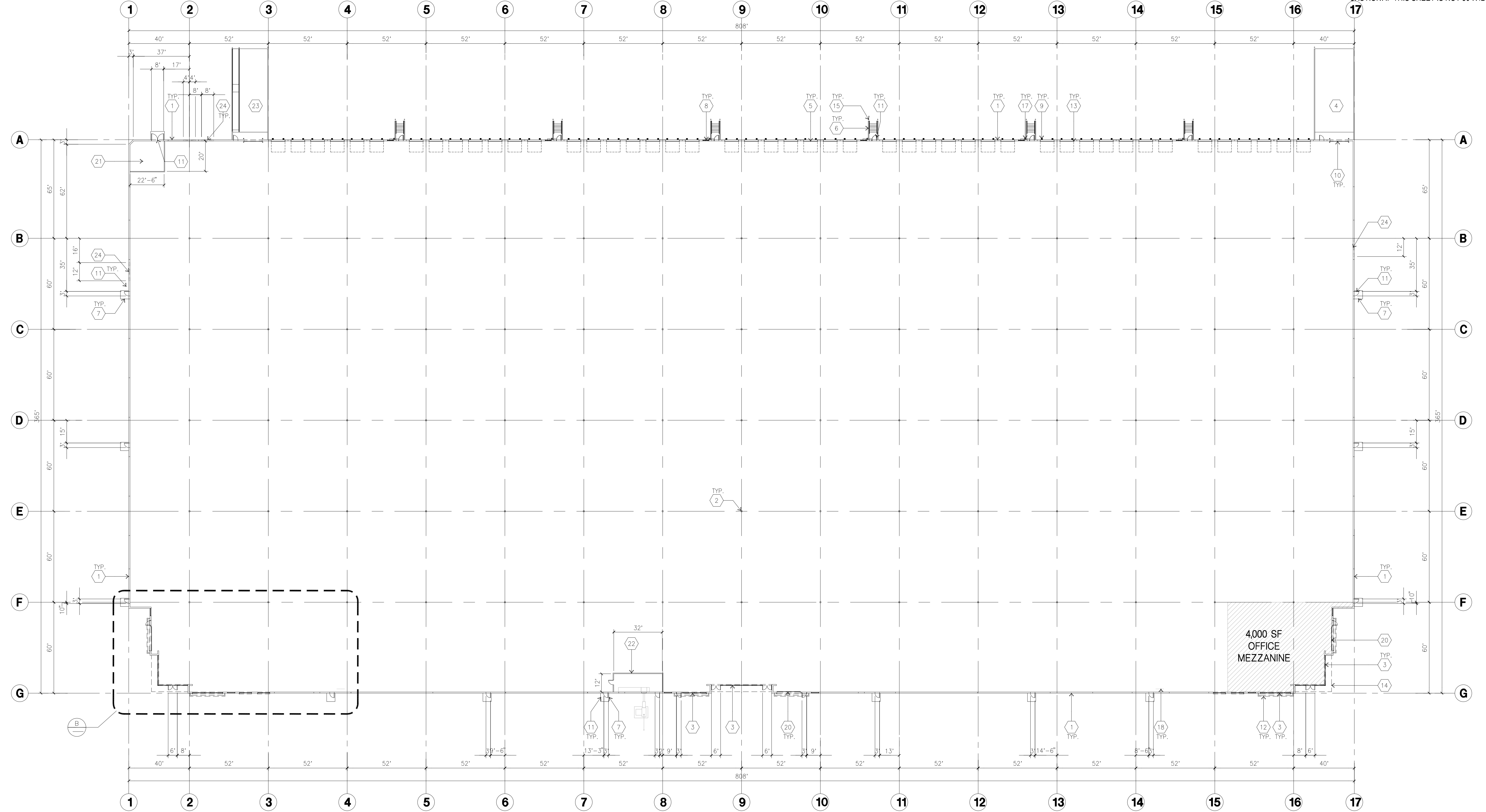
Drawn by: JW

Date: 12/19/2016

Revision:

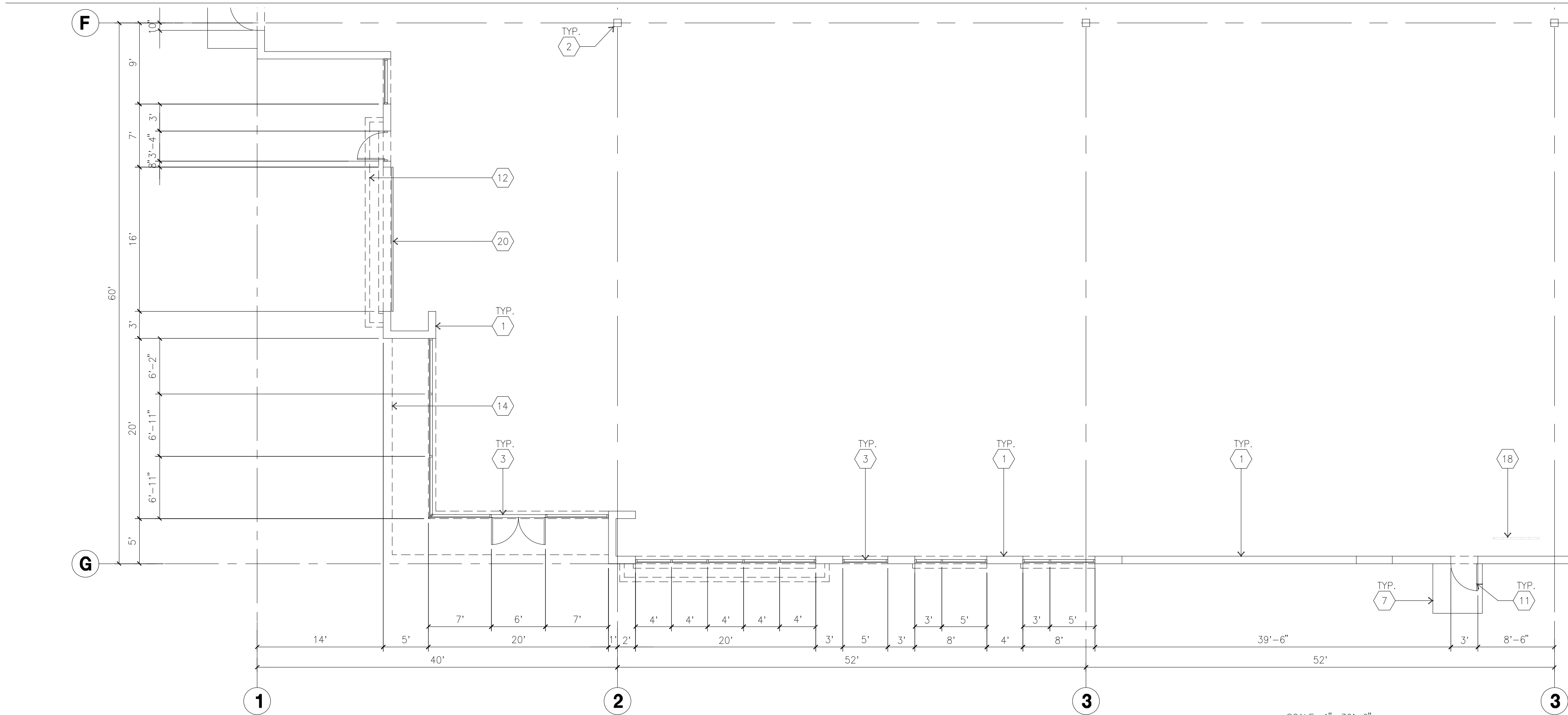
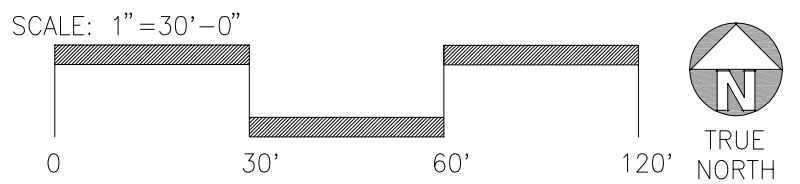
Sheet:

DAB-A2.1



OVERALL FLOOR PLAN

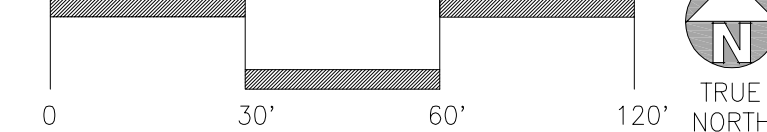
scale: 1"=30'-0"



OVERALL FLOOR PLAN

scale: 1"=30'-0"

SCALE: 1"=30'-0"



KETNOTES - FLOOR PLAN

- 1 CONCRETE TILT-UP PANEL.
- 2 STRUCTURAL STEEL COLUMN.
- 3 TYPICAL STOREFRONT SYSTEM WITH GLAZING. SEE OFFICE BLOW-UP AND ELEVATIONS FOR SIZE, COLOR AND LOCATIONS.
- 4 CONCRETE RAMP W/ 42" HIGH CONC TILT-UP GUARD WALL OR BUILDING WALL ON BOTH SIDE OF RAMP.
- 5 9' X 10' TRUCK DOOR, SECTIONAL O'H., STANDARD
- 6 EXTERIOR CONCRETE STAIR
- 7 5'-6"x5'-6"x4" THICK CONCRETE EXTERIOR LANDING PAD TYPICAL AT ALL EXTERIOR MAN DOORS TO LANDSCAPED AREA. FINISH TO BE MEDIUM BLOOM FINISH. SLOPE TO BE 1/4" : 12" MAX. PROVIDE WALK TO HARD SURFACE PER CITY REQUIREMENTS.
- 8 LOUVERED OPENING FOR VENTILATION.
- 9 DOCK DOOR BUMPER.
- 10 12' X 14' DRIVE THRU. SECTIONAL O'H., STANDARD GRADE.
- 11 3'X7' HOLLOW METAL EXTERIOR MAN DOOR.
- 12 SOFFIT LINE ABOVE
- 13 Z GUARD.
- 14 TUBE STEEL CANOPY.
- 15 CONC. FILLED BOLLARD, 6" DIA. U.N.O., 42"H
- 16 ROOF ACCESS LADDER.
- 17 EXTERIOR DOWNSPOUT
- 18 INTERIOR BIKE RACK.
- 19 ROOF ACCESS LADDER
- 20 ROLL UP DOOR
- 21 PUMP ROOM
- 22 ELECTRICAL ROOM
- 23 CONC. DRIVE UP RAMP W/ ACCESSIBLE RAMP
- 24 KNOCK OUT FOR FUTURE OPENING

GENERAL NOTES-FLOOR PLAN

- A. THIS BUILDING IS DESIGNED FOR HIGH PILE STORAGE WITH FIRE ACCESS MAN DOORS APPROX. 100' MAXIMUM. A SEPARATE PERMIT WILL BE REQUIRED FOR ANY RACKING/CONVEYER SYSTEMS.
- B. FIRE HOSE LOCATIONS SHALL BE APPROVED PER FIRE DEPARTMENT.
- C. THE BUILDING FLOOR SLAB IS SLOPED, SEE "C" DRAWINGS FOR FINISH SURFACE ELEVATIONS.
- D. PROVIDE 6" DIA. CONCRETE BOLLARD AT ALL FIRE RISER AND UNPROTECTED INTERIOR ROOF DRAIN.
- E. WAREHOUSE INTERIOR CONCRETE WALLS ARE PAINTED WHITE. COLUMNS ARE TO RECEIVE PRIMER ONLY. ALL GYP. BD. WALLS IN WAREHOUSE TO RECEIVE 1 COAT OF WHITE TO COVER.
- F. SLOPE POUR STRIP 1/2" TO EXTERIOR AT ALL MANDOOD EXITS.
- G. ALL DIMENSIONS ARE TO THE FACE OF CONCRETE PANEL WALL, GRIDLINE, OR FACE OF STUD U.N.O.
- H. SEE CIVIL DRAWINGS FOR POINT OF CONNECTIONS TO OFF-SITE UTILITIES. CONTRACTOR TO VERIFY ACTUAL UTILITY LOCATIONS. PLUMBING/ELECTRICAL COORDINATION.
- I. FOR DOOR TYPES AND SIZES, SEE DETAIL SHEET AD.4. NOTE: ALL DOORS PER DOOR SCHEDULE ARE FINISH OPENINGS.
- J. CONTRACTOR TO PROTECT AND KEEP THE FLOOR SLAB CLEAN. ALL EQUIPMENT TO BE DIAPERED INCLUDING CARS AND TRUCKS.
- K. ALL EXIT MAN DOORS IN WAREHOUSE TO HAVE ILLUMINATED EXIT SIGN. HARDWARE.
- L. HIGHLY FLAMMABLE AND COMBUSTIBLE MATERIAL SHALL NOT BE USED OR STORED IN THIS BUILDING.
- M. EACH EXTERIOR EXIT DOOR SHALL BE IDENTIFIED BY A TACTILE EXIT SIGN WITH THE WORDS "EXIT". THE MOUNTING HEIGHT FOR SUCH SIGNAGE SHALL BE 60" FROM FINISH FLOOR LEVEL TO THE CENTER OF THE SIGN.
- N. NON-ACCESSIBLE DOOR, PROVIDE WARNING SIGN LOCATED IN THE INTERIOR SIDE PER CBC 1133B.1.1.1
- O. ALL ROOF MOUNTED MATERIALS SHALL BE FULLY SCREENED FROM PUBLIC VIEW.

PLN17-0005  
Exhibit C  
April 6, 2017