

UPDATE ON SHORELINE PROJECTS- MULFORD-MARINA BRANCH LIBRARY HARBOR BASIN DECOMMISSIONING STUDY MARINA BOULEVARD STREETScape IMPROVEMENTS

City Council Work Session
October 9, 2017



OVERVIEW

Introduction & Council Commitment

- Cynthia Battenberg, Community Development Director

Mulford-Marina Branch Library

- Theresa Mallon, Library Director

Harbor Basin Decommissioning Study

- Debbie Pollart, Public Works Director

Marina Boulevard Streetscape Improvements

- Nick Thom, City Engineer

COUNCIL COMMITMENT

Mulford-Marina Branch Library Design (2015-16)	\$300,000
Mulford-Marina Branch Library Construction (CIP 2018-19)	2,500,000
Harbor Basin Decommissioning & Redevelopment (CIP 2017-19)	7,000,000
Marina Blvd Streetscape Design (CIP 2016-17)	500,000
\$1 million Allocation (2015-16) *	<u>1,000,000</u>
Total	\$11,300,000

* Funded to date from \$1 million Allocation:

▪ Keyser Marston, Fiscal Consultant (2015-18)	138,725
▪ The Gardner Group Consultant (2016-17)	47,000
▪ Meyers Nave – lawsuit settlement work (2016-17)	78,850
(Settlement cost: \$244k; \$172k from GF Legal Services acct)	
▪ Harbor Basin Decommissioning Study (2016-17)	121,000
▪ MIG Open Space meetings (2017-18)	6,740
▪ 2181 Marina Appraisal	<u>6,000</u>
	\$398,315

MULFORD-MARINA BRANCH LIBRARY



LIBRARY OVERVIEW

Opened in 1962

15,223 items in collection

Open 3 days a week / 13.5 hours a week

690 active library card holders

7,565 annual circulation

LIBRARY CHALLENGES

Limited space for patrons: 12 user seats

Inadequate space for collection

No program space

Building configuration difficult to accommodate collection, class visits, etc.

Approximately 1,200 square feet

NEW BRANCH LIBRARY ENVISIONED AS PART OF SHORELINE PROJECT

Two community meetings held in 2013

Desire to keep branch at current location

Strong desire for additional computer access and public wi-fi

Strong desire for separate program room to accommodate butterfly tours, class visits, library programs, etc.

NEW BRANCH LIBRARY FUNDING

Project has shifted to City funded project:

Council approved \$300,000 for design in 2015-16

Council approved \$2.5M to CIP for construction in 2018-19

NEW BRANCH LIBRARY TIMELINE

Engineering to release RFP for design proposals October 2017

Design contract for Council approval in early 2018

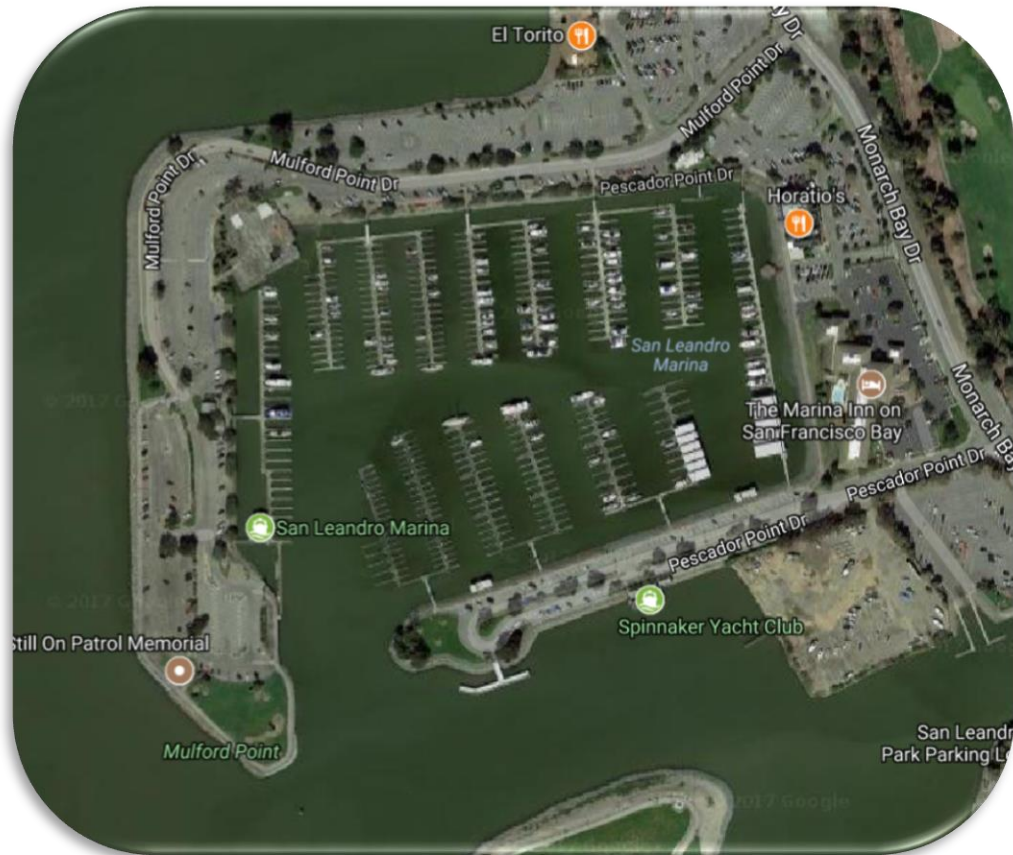
- Design process to consider: additional space from Corp Yard, design of shoreline project, technology to facilitate self service options, community room with outdoor open space

Community meetings in Spring 2018

- Additional community meetings
- Meetings with library stakeholders

Construction projected to start in 2019

Boat Harbor Decommissioning Study



Boat Harbor Decommissioning Study

GHD Services contracted to develop Decommissioning & Demolition Plan including:

- Waterside features to be removed and recycled/re-used/sold or disposed
- Regulatory permits/requirements
- Costs associated with proposed work

Study to be presented to City Council in early 2018

Plan to redevelop the basin to be included in Monarch Bay Shoreline Project designs

\$7M in 2018-19 CIP budget earmarked for demolition and redevelopment

Marina Boulevard Streetscape Improvements



COMPLETED, FUNDED AND IN DESIGN STREETSCAPE IMPROVEMENTS

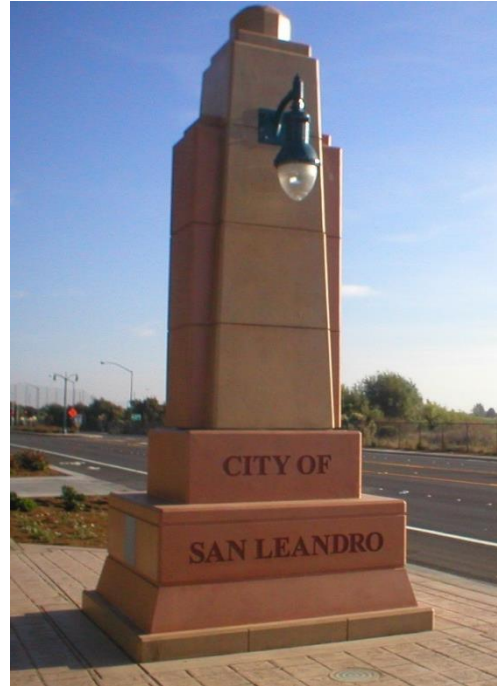
Completed –
Doolittle Dr, 2010

In Design -
Marina Blvd



Funded -
Doolittle Dr, 2021

DOOLITTLE DRIVE NORTH OF DAVIS STREET STREETSCAPE IMPROVEMENTS



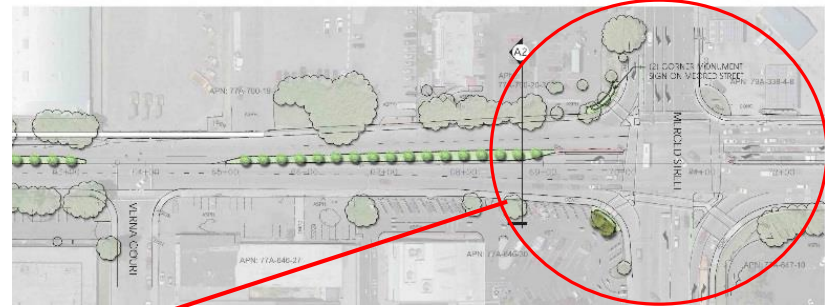
- Landscaping
- Decorative Lighting
- Entry Monuments
- Completed 2010
- \$3.5M RDA funded

DOOLITTLE DRIVE - DAVIS TO FAIRWAY STREETSCAPE IMPROVEMENTS



- Existing layout has bike lanes but is merely functional
- \$4.2M ROPS funding
- Initiate design 2019
- Construction 2021

MARINA BLVD - MERCED TO DOOLITTLE STREETScape IMPROVEMENTS

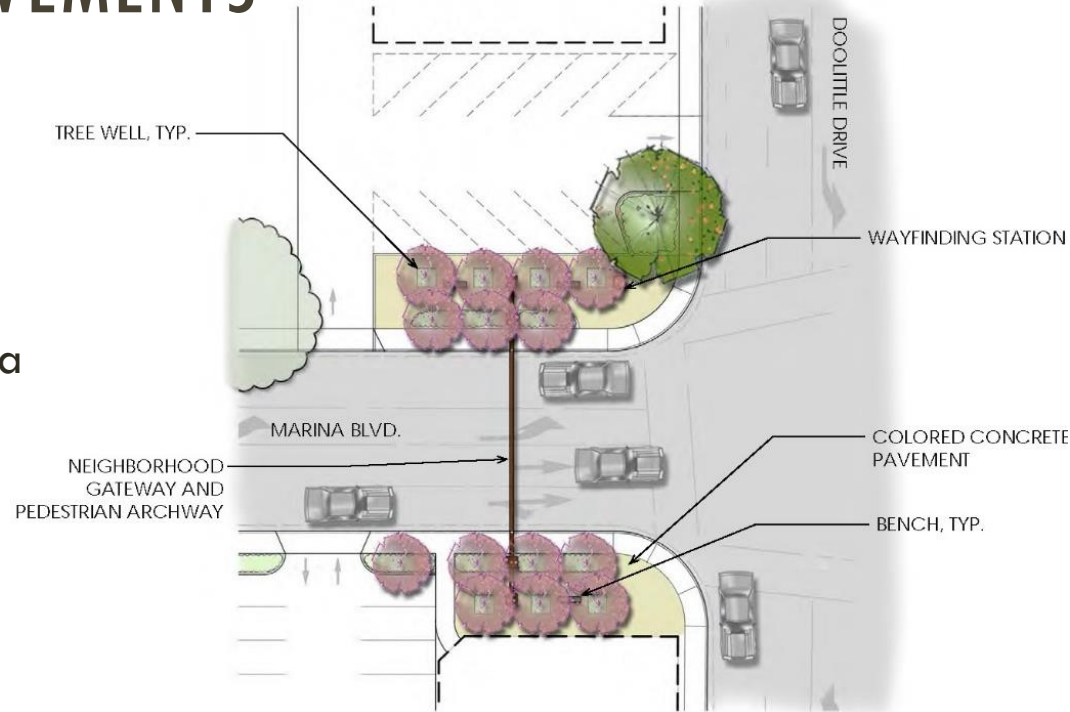


- Entry Concept – Marina & Merced
- Enhanced median including decorative lighting and gateway feature
- In design, construction funding to be identified



MARINA BLVD & DOOLITTLE INTERSECTION IMPROVEMENTS

- Entry Concept – Marina & Doolittle
- Acquire 10' additional right-of-way from 2181 Doolittle and 2250 Marina
- In design, construction funding to be identified



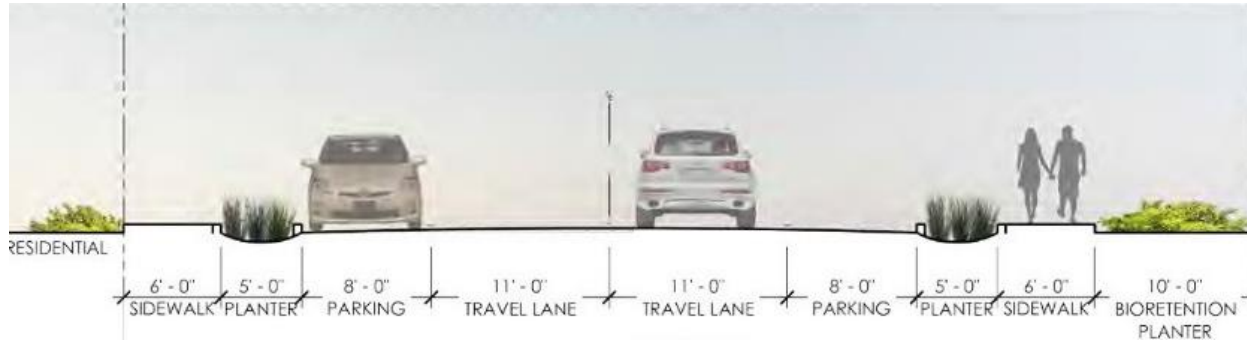
MARINA BLVD - DOOLITTLE TO NEPTUNE STREETSCAPE IMPROVEMENTS



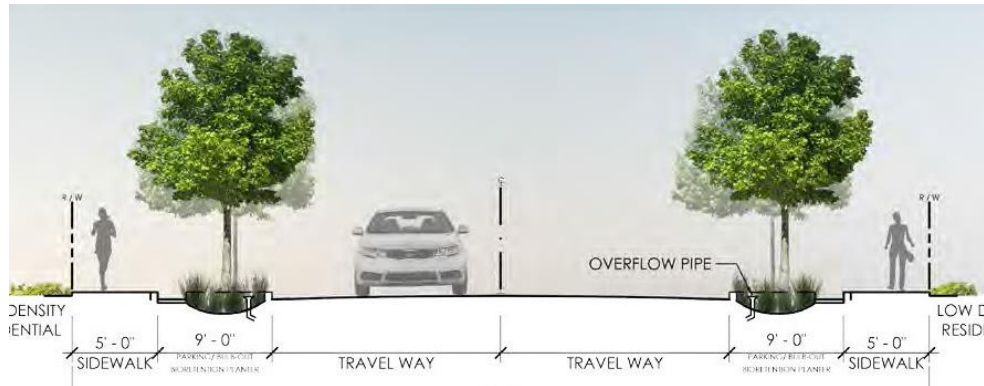
- Enhanced intersections, sidewalks and landscaping
- In design, construction funding to be identified

MARINA BLVD - DOOLITTLE TO NEPTUNE

POTENTIAL STREET SECTIONS



70' right-of-way
with parking



60' right-of-way
with bulb- outs
at intersections