

| REVISION                       | BY |
|--------------------------------|----|
| Δ<br>REVISION<br>DAVIS/ST PLAN |    |
| BLDG. 3/18/09                  |    |
| Δ 05/15/15                     |    |
| Δ 11/07/15                     |    |
| 06/06/17                       |    |
| 10/06/17                       |    |

L H A

LUNG HWA ASSOCIATES  
ARCHITECTS  
180 MARTINGALE DR. FREMONT, CALIFORNIA  
TEL.: (510) 656-8267 FAX: (510) 650-8360  
E-MAIL: lhw@lha16@gmail.com



NEW SINGLE FAMILY HOUSE @  
2882 DARIUS WAY  
SAN LEANDRO, CALIFORNIA

CONTENTS:  
PROPOSED  
1ST FLOOR PLAN

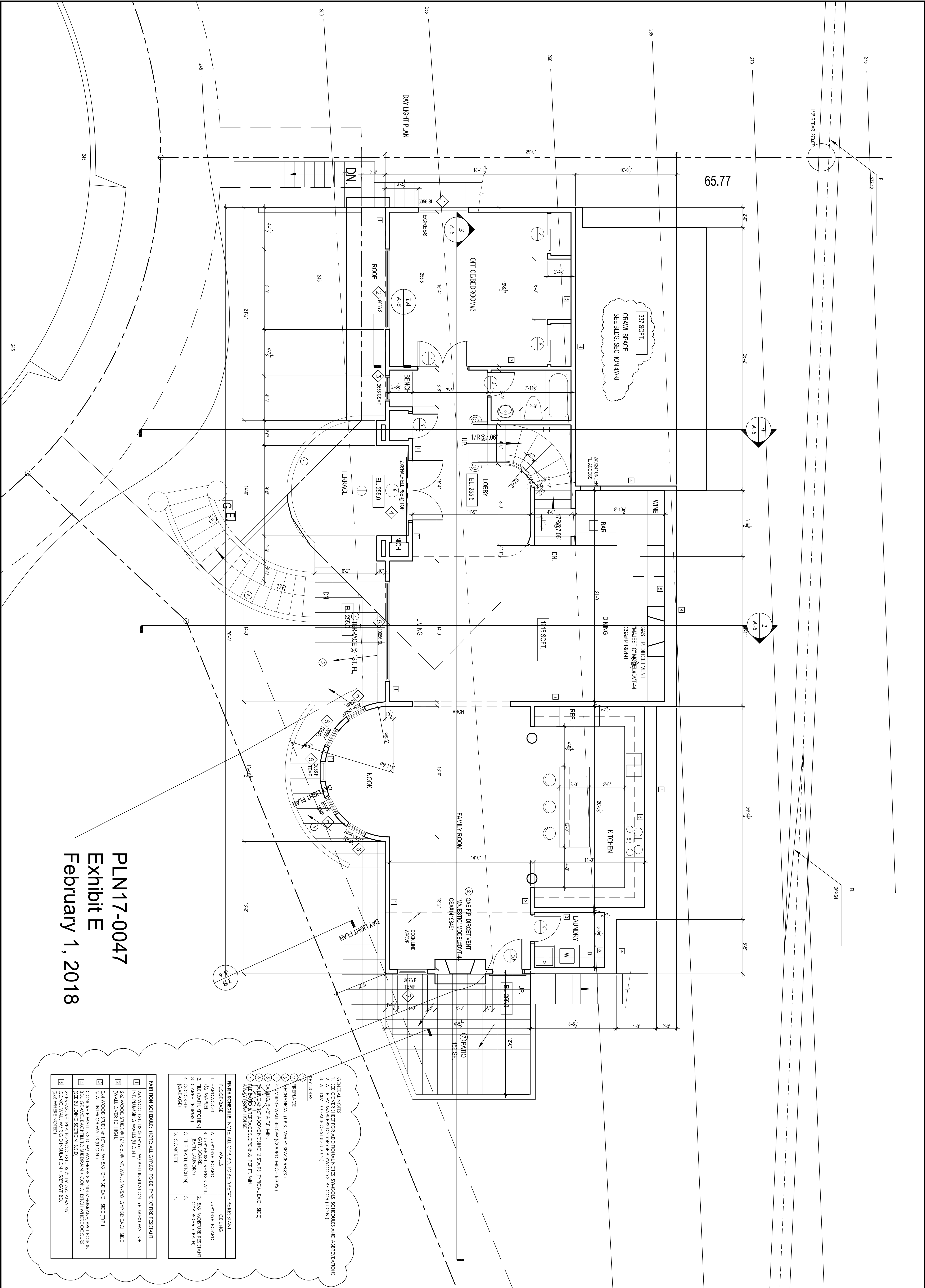
Date : 04/03/08

Scale: 1/4"=1'-0"

Drawn:

Job:

Sheet:  
A-4  
of



PLN17-0047  
Exhibit E  
February 1, 2018

| PARTITION SCHEDULE. NOTE: ALL GYP. BD. TO BE TYPE "X" FIRE RESISTANT. |  |  |  |
|---|--|--|--|
| 1   | 2x4 WOOD STUDS @ 16" O.C. W/ BATT INSULATION TYP. @ EXT WALLS + INT. PLUMBING WALLS (U.O.N.) |  |  |
| 2   | 2x4 WOOD STUDS @ 16" O.C. @ INT. WALLS W/5/8" GYP. BD EACH SIDE (WALL OVER 10" HIGH)         |  |  |
| 3   | 2x4 WOOD STUDS @ 16" O.C. W/ 5/8" GYP. BD EACH SIDE (TYP.) @ ALL INTERIOR WALLS (U.O.N.)     |  |  |
| 4   | BD. GRAVEL BACKFILL TO SUBBRAN + CONC. DITCH WHERE OCCURS (SEE BUILDING SECTIONS S.D.)       |  |  |
| 5   | 2x PRESSED TREATED WOOD STUDS @ 16" O.C. AGAINST (2x4 WHERE NOTED)                           |  |  |

| FINISH SCHEDULE. NOTE: ALL GYP. BD. TO BE TYPE "X" FIRE RESISTANT. |                            |                            |  |
|--|----------------------------|----------------------------|--|
| FLOOR/BASE   | WALLS                      | CEILING                    |  |
| 1. HARDWOOD  | A. 5/8" GYP. BOARD         | 1. 5/8" GYP. BOARD         |  |
| 2. TILE (BATH, KITCHEN)  | B. 5/8" MOISTURE RESISTANT | 2. 5/8" MOISTURE RESISTANT |  |
| 3. CARPET (BEDRMS.)  | (BATH, LAUNDRY)            | GYP. BOARD (BATH)          |  |
| 4. CONCRETE  | C. TILE (BATH, KITCHEN)    |                            |  |
|  | D. CONCRETE                |                            |  |

GENERAL NOTES:  
1. SHEET FOR ADDITIONAL NOTES, SYMBOLS, SCHEDULES AND ABBREVIATIONS  
2. ALL ELEV. MARKERS TO TOP OF PLYWOOD SUBFLOOR (U.O.N.)  
3. ALL DIM. TO FACE OF STUD (U.O.N.)  
KEY NOTES:  
1. PREFACE  
2. MECHANICAL (T.B.S., VERIFY SPACE REQ'S.)  
3. PLUMBING WALL BELOW (COORD. MECH. REQ'S.)  
4. PAINTING @ 42 A.F.F. MIN.  
5. PAINTING @ 36" ABOVE FINISHING @ STAIRS (TYPICAL EACH SIDE)  
6. PAINTING @ 36" ABOVE FINISHING @ STAIRS (TYPICAL EACH SIDE)  
7. PAINTING @ 36" ABOVE FINISHING @ STAIRS (TYPICAL EACH SIDE)  
8. PAINTING @ 36" ABOVE FINISHING @ STAIRS (TYPICAL EACH SIDE)  
9. PAINTING @ 36" ABOVE FINISHING @ STAIRS (TYPICAL EACH SIDE)  
10. PAINTING @ 36" ABOVE FINISHING @ STAIRS (TYPICAL EACH SIDE)  
11. PAINTING @ 36" ABOVE FINISHING @ STAIRS (TYPICAL EACH SIDE)  
12. PAINTING @ 36" ABOVE FINISHING @ STAIRS (TYPICAL EACH SIDE)  
13. PAINTING @ 36" ABOVE FINISHING @ STAIRS (TYPICAL EACH SIDE)  
14. PAINTING @ 36" ABOVE FINISHING @ STAIRS (TYPICAL EACH SIDE)  
15. PAINTING @ 36" ABOVE FINISHING @ STAIRS (TYPICAL EACH SIDE)  
16. PAINTING @ 36" ABOVE FINISHING @ STAIRS (TYPICAL EACH SIDE)  
17. PAINTING @ 36" ABOVE FINISHING @ STAIRS (TYPICAL EACH SIDE)  
18. PAINTING @ 36" ABOVE FINISHING @ STAIRS (TYPICAL EACH SIDE)  
19. PAINTING @ 36" ABOVE FINISHING @ STAIRS (TYPICAL EACH SIDE)  
20. PAINTING @ 36" ABOVE FINISHING @ STAIRS (TYPICAL EACH SIDE)  
21. PAINTING @ 36" ABOVE FINISHING @ STAIRS (TYPICAL EACH SIDE)  
22. PAINTING @ 36" ABOVE FINISHING @ STAIRS (TYPICAL EACH SIDE)  
23. PAINTING @ 36" ABOVE FINISHING @ STAIRS (TYPICAL EACH SIDE)  
24. PAINTING @ 36" ABOVE FINISHING @ STAIRS (TYPICAL EACH SIDE)  
25. PAINTING @ 36" ABOVE FINISHING @ STAIRS (TYPICAL EACH SIDE)  
26. PAINTING @ 36" ABOVE FINISHING @ STAIRS (TYPICAL EACH SIDE)  
27. PAINTING @ 36" ABOVE FINISHING @ STAIRS (TYPICAL EACH SIDE)  
28. PAINTING @ 36" ABOVE FINISHING @ STAIRS (TYPICAL EACH SIDE)  
29. PAINTING @ 36" ABOVE FINISHING @ STAIRS (TYPICAL EACH SIDE)  
30. PAINTING @ 36" ABOVE FINISHING @ STAIRS (TYPICAL EACH SIDE)  
31. PAINTING @ 36" ABOVE FINISHING @ STAIRS (TYPICAL EACH SIDE)  
32. PAINTING @ 36" ABOVE FINISHING @ STAIRS (TYPICAL EACH SIDE)  
33. PAINTING @ 36" ABOVE FINISHING @ STAIRS (TYPICAL EACH SIDE)  
34. PAINTING @ 36" ABOVE FINISHING @ STAIRS (TYPICAL EACH SIDE)  
35. PAINTING @ 36" ABOVE FINISHING @ STAIRS (TYPICAL EACH SIDE)  
36. PAINTING @ 36" ABOVE FINISHING @ STAIRS (TYPICAL EACH SIDE)  
37. PAINTING @ 36" ABOVE FINISHING @ STAIRS (TYPICAL EACH SIDE)  
38. PAINTING @ 36" ABOVE FINISHING @ STAIRS (TYPICAL EACH SIDE)  
39. PAINTING @ 36" ABOVE FINISHING @ STAIRS (TYPICAL EACH SIDE)  
40. PAINTING @ 36" ABOVE FINISHING @ STAIRS (TYPICAL EACH SIDE)  
41. PAINTING @ 36" ABOVE FINISHING @ STAIRS (TYPICAL EACH SIDE)  
42. PAINTING @ 36" ABOVE FINISHING @ STAIRS (TYPICAL EACH SIDE)  
43. PAINTING @ 36" ABOVE FINISHING @ STAIRS (TYPICAL EACH SIDE)  
44. PAINTING @ 36" ABOVE FINISHING @ STAIRS (TYPICAL EACH SIDE)  
45. PAINTING @ 36" ABOVE FINISHING @ STAIRS (TYPICAL EACH SIDE)  
46. PAINTING @ 36" ABOVE FINISHING @ STAIRS (TYPICAL EACH SIDE)  
47. PAINTING @ 36" ABOVE FINISHING @ STAIRS (TYPICAL EACH SIDE)  
48. PAINTING @ 36" ABOVE FINISHING @ STAIRS (TYPICAL EACH SIDE)  
49. PAINTING @ 36" ABOVE FINISHING @ STAIRS (TYPICAL EACH SIDE)  
50. PAINTING @ 36" ABOVE FINISHING @ STAIRS (TYPICAL EACH SIDE)  
51. PAINTING @ 36" ABOVE FINISHING @ STAIRS (TYPICAL EACH SIDE)  
52. PAINTING @ 36" ABOVE FINISHING @ STAIRS (TYPICAL EACH SIDE)  
53. PAINTING @ 36" ABOVE FINISHING @ STAIRS (TYPICAL EACH SIDE)  
54. PAINTING @ 36" ABOVE FINISHING @ STAIRS (TYPICAL EACH SIDE)  
55. PAINTING @ 36" ABOVE FINISHING @ STAIRS (TYPICAL EACH SIDE)  
56. PAINTING @ 36" ABOVE FINISHING @ STAIRS (TYPICAL EACH SIDE)  
57. PAINTING @ 36" ABOVE FINISHING @ STAIRS (TYPICAL EACH SIDE)  
58. PAINTING @ 36" ABOVE FINISHING @ STAIRS (TYPICAL EACH SIDE)  
59. PAINTING @ 36" ABOVE FINISHING @ STAIRS (TYPICAL EACH SIDE)  
60. PAINTING @ 36" ABOVE FINISHING @ STAIRS (TYPICAL EACH SIDE)  
61. PAINTING @ 36" ABOVE FINISHING @ STAIRS (TYPICAL EACH SIDE)  
62. PAINTING @ 36" ABOVE FINISHING @ STAIRS (TYPICAL EACH SIDE)  
63. PAINTING @ 36" ABOVE FINISHING @ STAIRS (TYPICAL EACH SIDE)  
64. PAINTING @ 36" ABOVE FINISHING @ STAIRS (TYPICAL EACH SIDE)  
65. PAINTING @ 36" ABOVE FINISHING @ STAIRS (TYPICAL EACH SIDE)  
66. PAINTING @ 36" ABOVE FINISHING @ STAIRS (TYPICAL EACH SIDE)  
67. PAINTING @ 36" ABOVE FINISHING @ STAIRS (TYPICAL EACH SIDE)  
68. PAINTING @ 36" ABOVE FINISHING @ STAIRS (TYPICAL EACH SIDE)  
69. PAINTING @ 36" ABOVE FINISHING @ STAIRS (TYPICAL EACH SIDE)  
70. PAINTING @ 36" ABOVE FINISHING @ STAIRS (TYPICAL EACH SIDE)  
71. PAINTING @ 36" ABOVE FINISHING @ STAIRS (TYPICAL EACH SIDE)  
72. PAINTING @ 36" ABOVE FINISHING @ STAIRS (TYPICAL EACH SIDE)  
73. PAINTING @ 36" ABOVE FINISHING @ STAIRS (TYPICAL EACH SIDE)  
74. PAINTING @ 36" ABOVE FINISHING @ STAIRS (TYPICAL EACH SIDE)  
75. PAINTING @ 36" ABOVE FINISHING @ STAIRS (TYPICAL EACH SIDE)  
76. PAINTING @ 36" ABOVE FINISHING @ STAIRS (TYPICAL EACH SIDE)  
77. PAINTING @ 36" ABOVE FINISHING @ STAIRS (TYPICAL EACH SIDE)  
78. PAINTING @ 36" ABOVE FINISHING @ STAIRS (TYPICAL EACH SIDE)  
79. PAINTING @ 36" ABOVE FINISHING @ STAIRS (TYPICAL EACH SIDE)  
80. PAINTING @ 36" ABOVE FINISHING @ STAIRS (TYPICAL EACH SIDE)  
81. PAINTING @ 36" ABOVE FINISHING @ STAIRS (TYPICAL EACH SIDE)  
82. PAINTING @ 36" ABOVE FINISHING @ STAIRS (TYPICAL EACH SIDE)  
83. PAINTING @ 36" ABOVE FINISHING @ STAIRS (TYPICAL EACH SIDE)  
84. PAINTING @ 36" ABOVE FINISHING @ STAIRS (TYPICAL EACH SIDE)  
85. PAINTING @ 36" ABOVE FINISHING @ STAIRS (TYPICAL EACH SIDE)  
86. PAINTING @ 36" ABOVE FINISHING @ STAIRS (TYPICAL EACH SIDE)  
87. PAINTING @ 36" ABOVE FINISHING @ STAIRS (TYPICAL EACH SIDE)  
88. PAINTING @ 36" ABOVE FINISHING @ STAIRS (TYPICAL EACH SIDE)  
89. PAINTING @ 36" ABOVE FINISHING @ STAIRS (TYPICAL EACH SIDE)  
90. PAINTING @ 36" ABOVE FINISHING @ STAIRS (TYPICAL EACH SIDE)  
91. PAINTING @ 36" ABOVE FINISHING @ STAIRS (TYPICAL EACH SIDE)  
92. PAINTING @ 36" ABOVE FINISHING @ STAIRS (TYPICAL EACH SIDE)  
93. PAINTING @ 36" ABOVE FINISHING @ STAIRS (TYPICAL EACH SIDE)  
94. PAINTING @ 36" ABOVE FINISHING @ STAIRS (TYPICAL EACH SIDE)  
95. PAINTING @ 36" ABOVE FINISHING @ STAIRS (TYPICAL EACH SIDE)  
96. PAINTING @ 36" ABOVE FINISHING @ STAIRS (TYPICAL EACH SIDE)  
97. PAINTING @ 36" ABOVE FINISHING @ STAIRS (TYPICAL EACH SIDE)  
98. PAINTING @ 36" ABOVE FINISHING @ STAIRS (TYPICAL EACH SIDE)  
99. PAINTING @ 36" ABOVE FINISHING @ STAIRS (TYPICAL EACH SIDE)  
100. PAINTING @ 36" ABOVE FINISHING @ STAIRS (TYPICAL EACH SIDE)