

Neighborhood Traffic Calming Program



City of San Leandro
Facilities and Transportation Committee Meeting
April 4, 2018

Project Info:

Title: Neighborhood Traffic Calming Program

CIP No. 2018.0040 and 2019.0040

Funding: \$100K in 2017-18 (General Fund)

\$100K in 2018-19 (General Fund)

Range of Options:

- Speed Cushions (rubber bolt-down) & Warning Signs
- Radar Speed Feedback Signs
- Raised Crosswalks & Intersections
- Bulb-outs and Curb Extensions
- Medians and Traffic Circles
- Pavement Markings and Signs



Neighborhood Traffic Calming Program

Roadway Classifications that Qualify for the Program:

- Residential (Yes)
- Residential Collector (Yes)
- Collector (It Depends)
 - Predominantly Residential (Yes)
 - Otherwise (No)
- Residential Arterial (No)
- Arterial (No)



Source: Kittelson & Associates, Inc., 2015.

- Freeway
- Arterial
- Collector
- Local



Neighborhood Traffic Calming Program

Prioritization Using “Points” System

- Average Daily Traffic Volume:

Local Street	Residential Collector	Points
1,000 – 1,100	2,000 – 2,200	1
1,101 – 1,200	2,201 – 2,400	2
1,201 – 1,300	2,401 – 2,600	3
1,301 – 1,400	2,601 – 2,800	4
1,401 – 1,500	2,801 – 3,000	5
1,501 – 1,600	3,001 – 3,200	6
1,601 – 1,700	3,201 – 3,400	7
1,701 – 1,800	3,401 – 3,600	8
1,801 – 1,900	3,601 – 3,800	9
1,901 and above	3,801 and above	10 maximum

- Critical (85th Percentile) Speed:

32 mph	34 mph	1
33 mph	35 mph	2
34 mph	36 mph	3
35 mph	37 mph	4
36 mph	38 mph	5
37 mph	39 mph	6
38 mph	40 mph	7
39 mph	41 mph	8
40 mph	42 mph	9
41 mph	43 mph	10 maximum

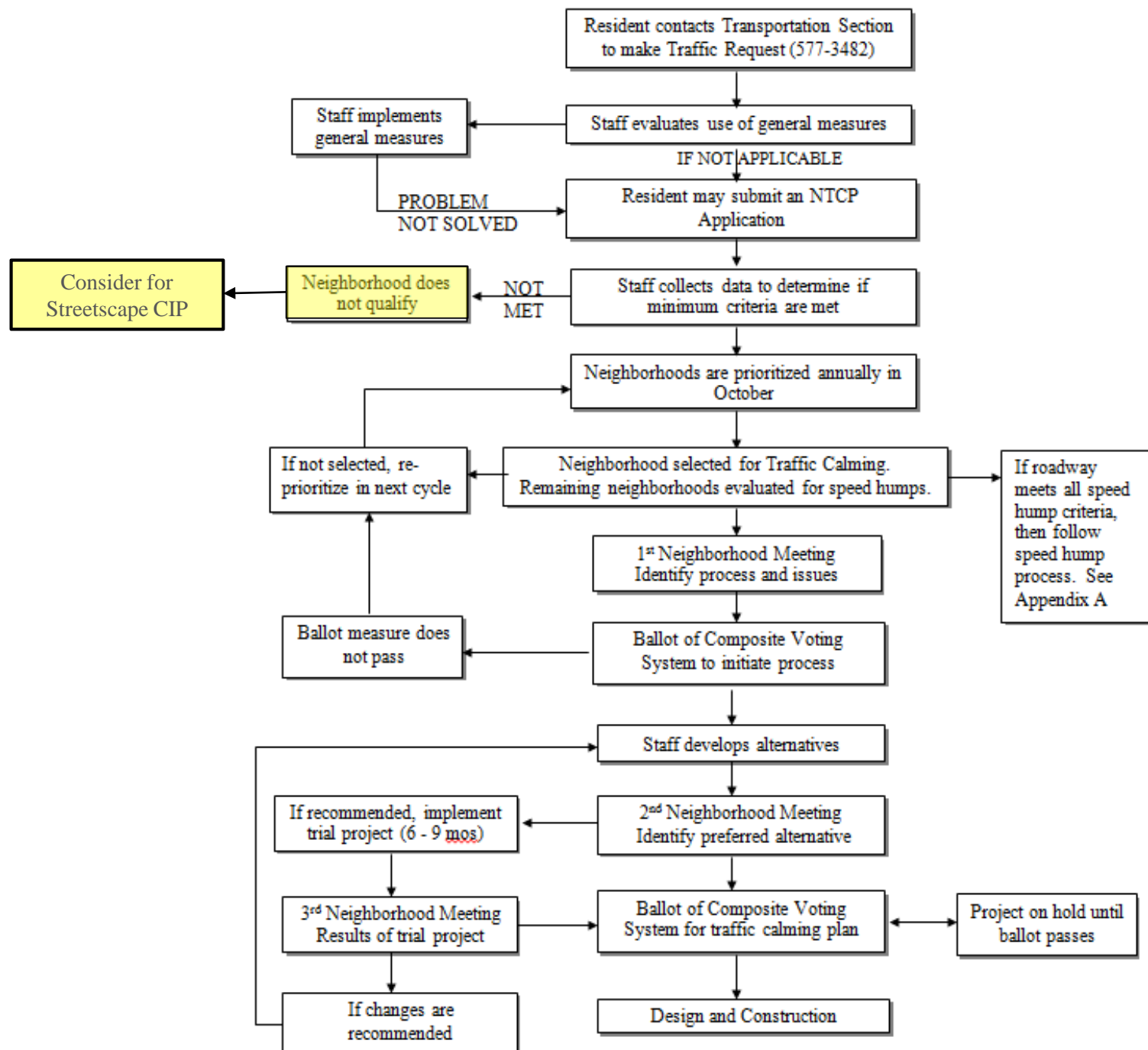
- Collision History

- One point for each collision susceptible to correction by traffic calming over the past 3 years.
- 5 points maximum

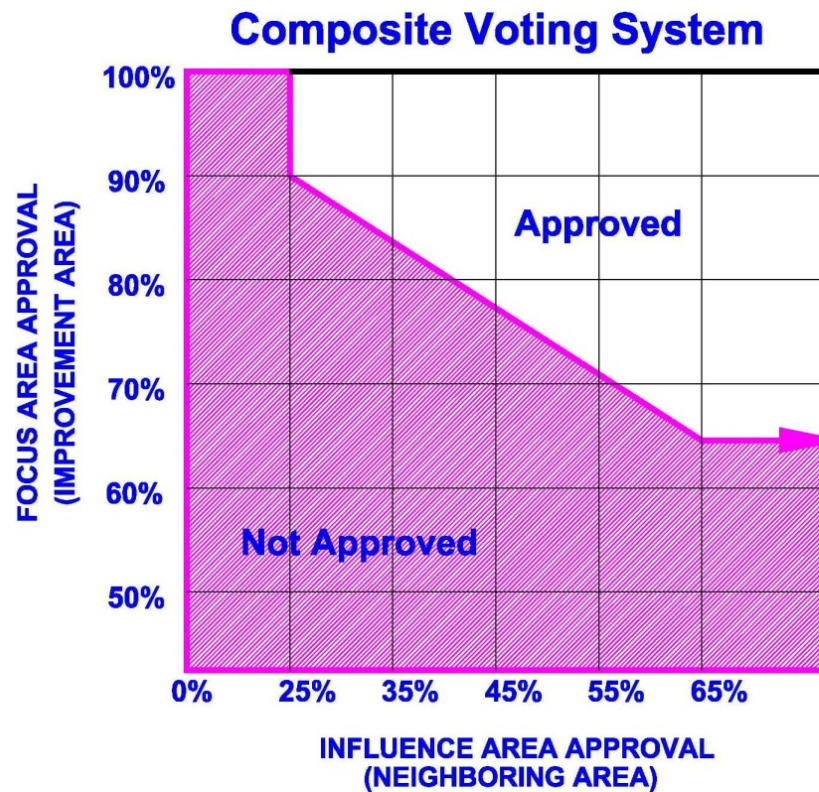
- Pedestrian Generators

- One point for each park, recreation facility or other public facility that is a significant pedestrian generator within the neighborhood boundary as determined by the traffic engineer. Elementary, middle and high schools will be weighted double points in the category.
- 5 points maximum

- Total Points Available = 30 points



Ballot of Composite Voting System



Speed Cushion



Speed Hump



Bicycle & Pedestrian Study Corridors

SAN LEANDRO RECOMMENDED BICYCLE NETWORK

RECOMMENDED BIKEWAYS

- • • • Separated Bikeway (Class IV)

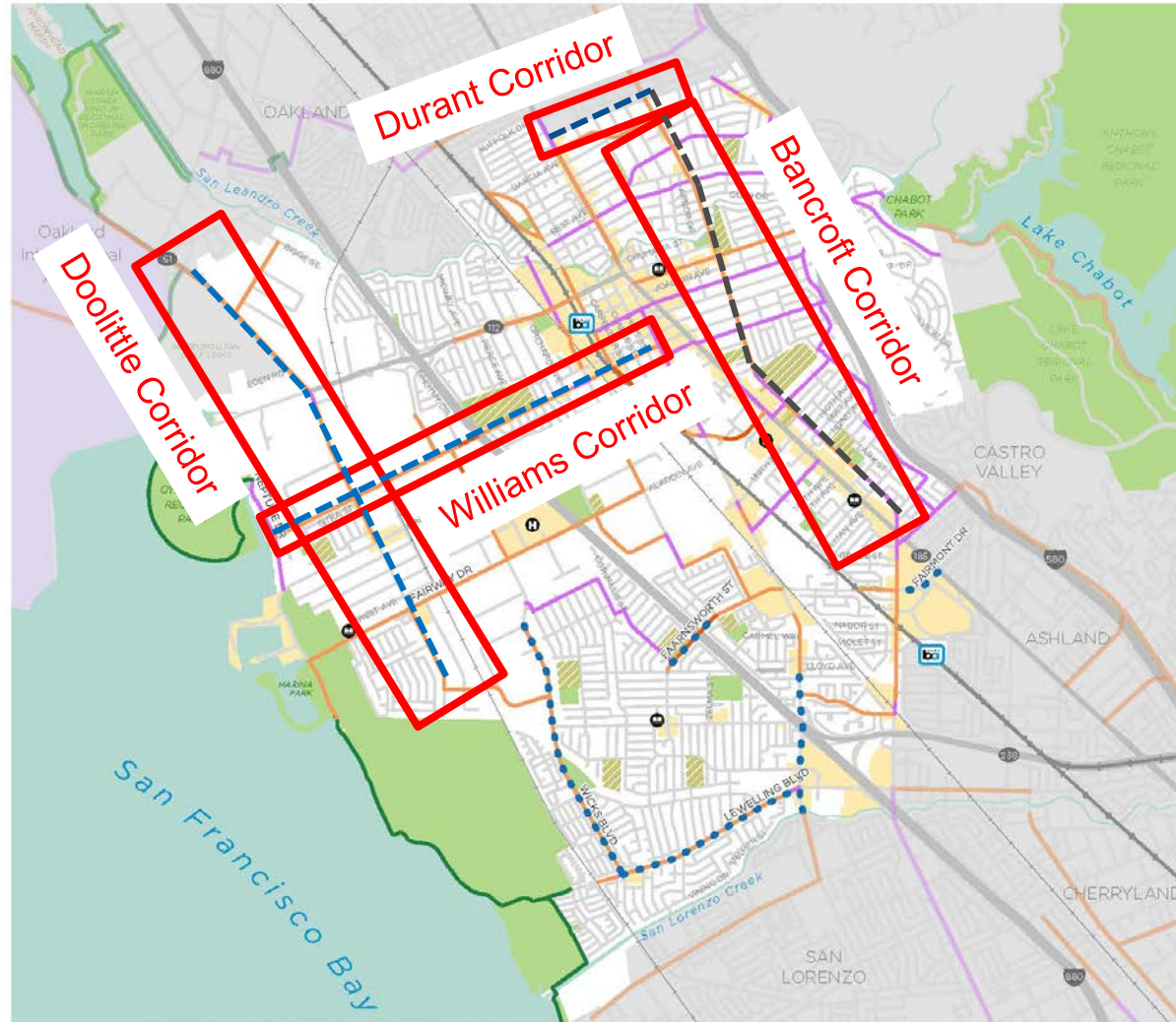
*All ages and all abilities

EXISTING BIKEWAYS

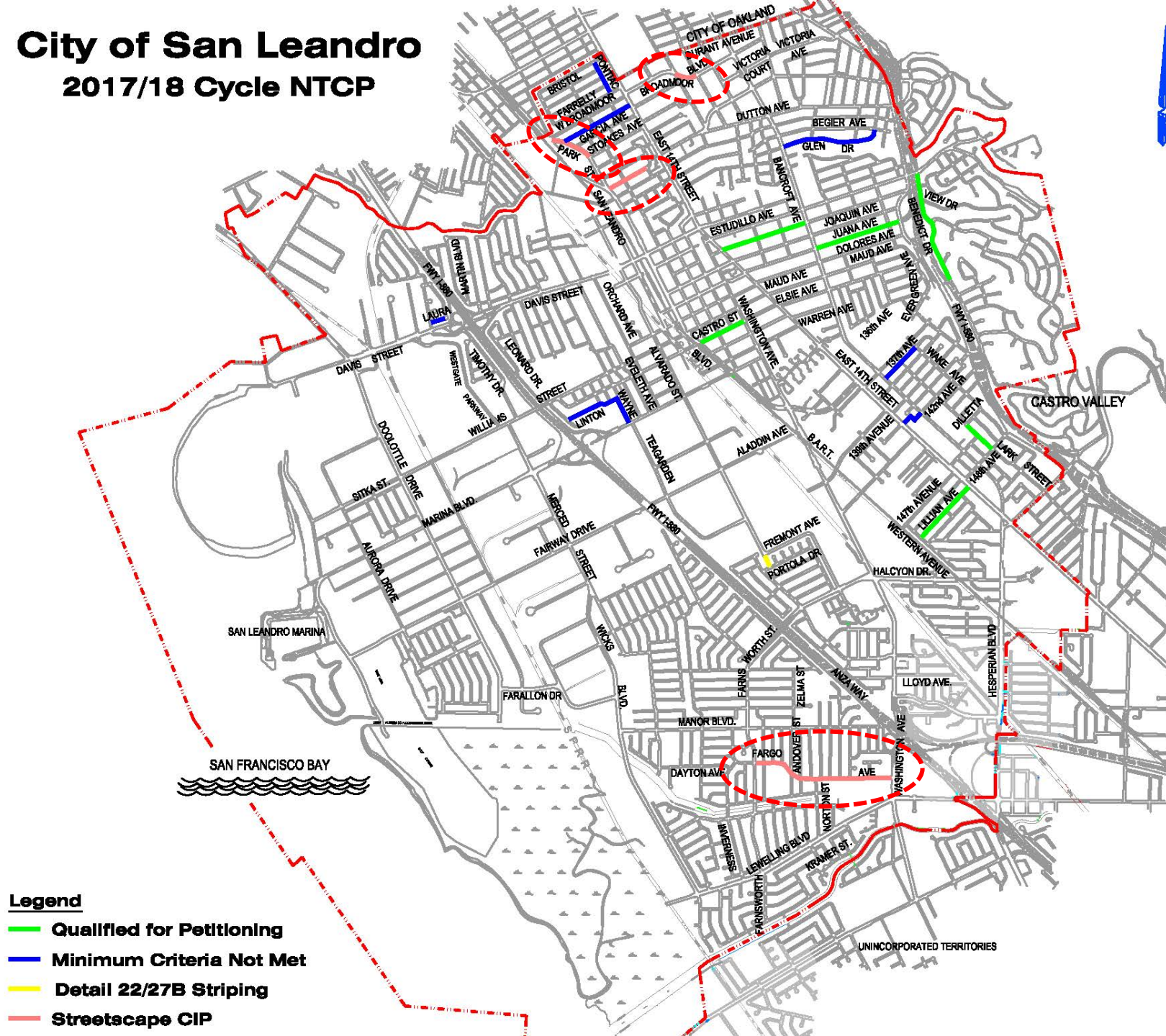
- Shared-use Path (Class I)
- Buffered Bike Lane (Class II)
- Bike Lane (Class II)
- Bike Route (Class III)

DESTINATIONS + BOUNDARIES

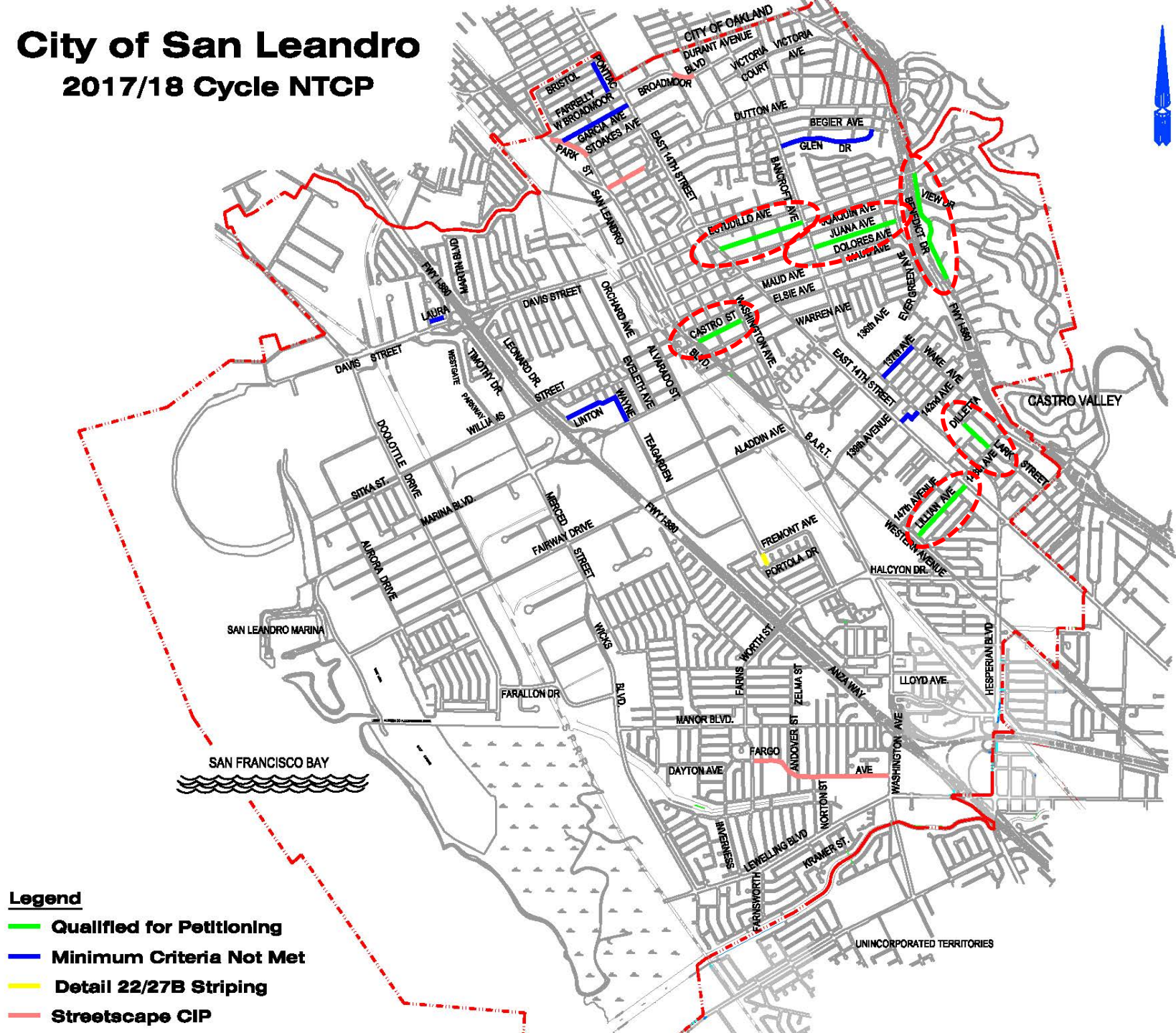
- ✈ Airport
- 📖 Library
- H Hospital
- 🚉 Bart Station
- 🎓 School
- 💧 Water Body
- 🌳 Open Space
- 🏘 Neighboring City
- 🏢 Commercial
- ✈ Airport



[illegible]

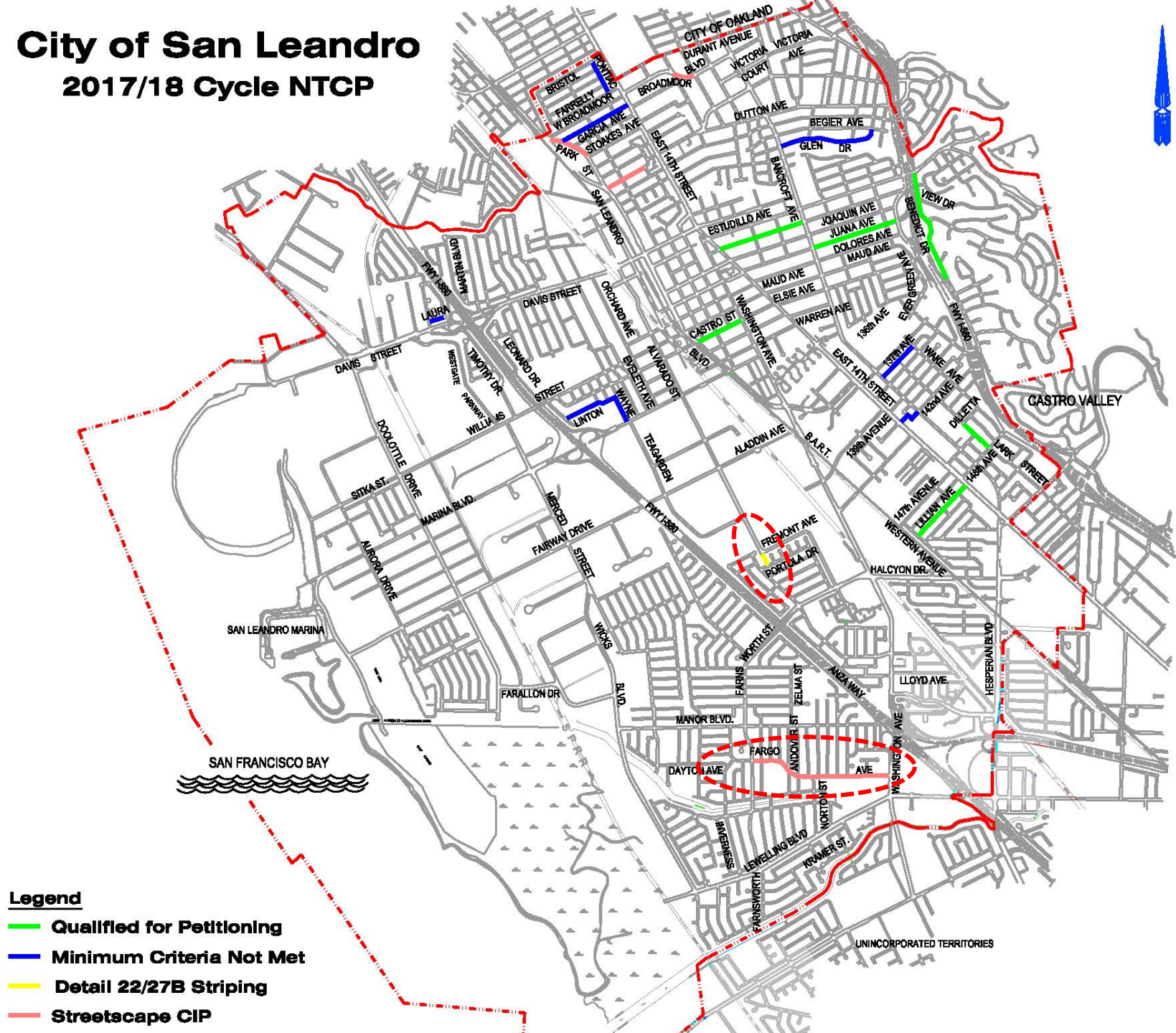


[illegible]

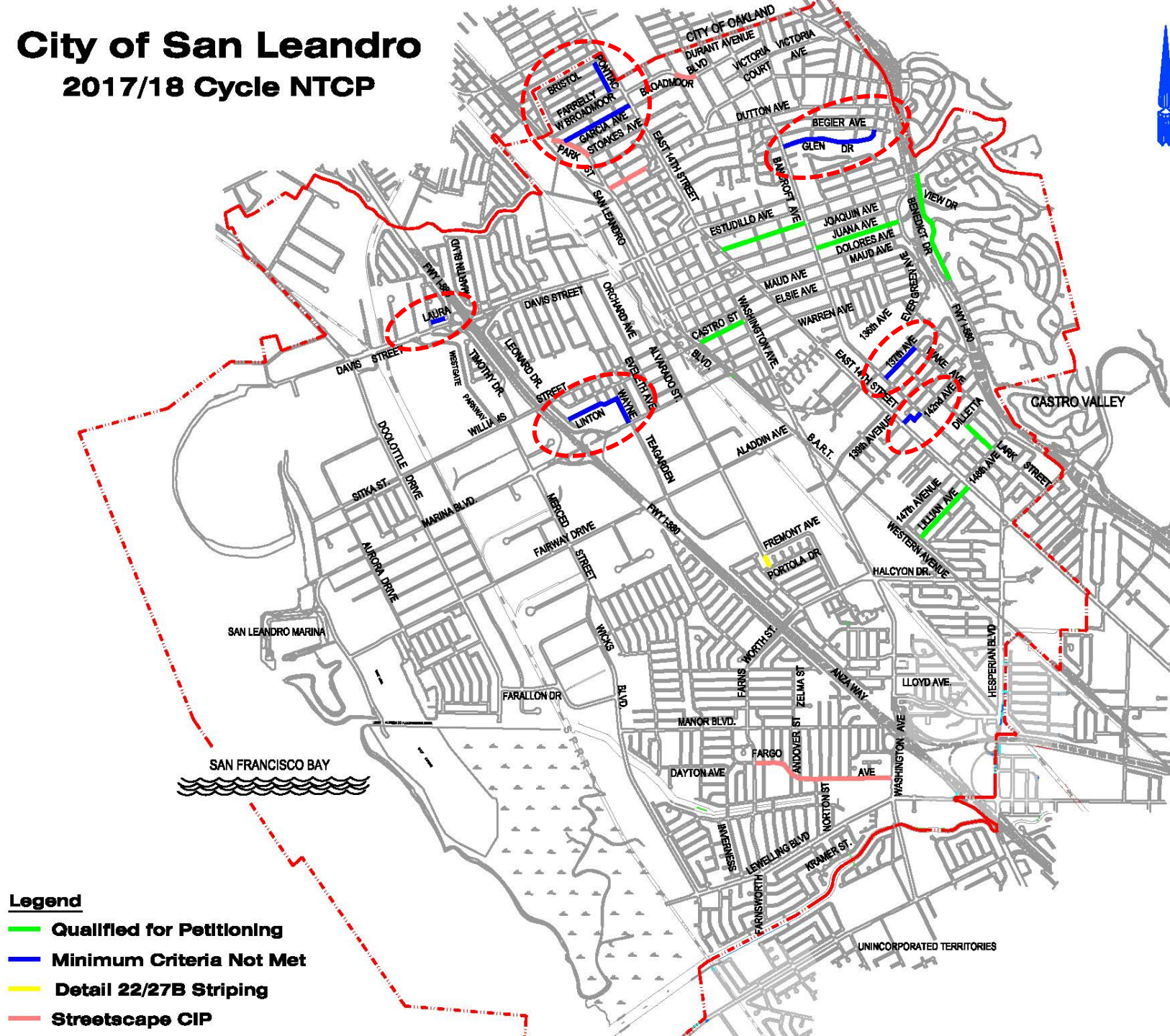


Edgeline Striping

[illegible]



[illegible]





Questions and Answers?