

# ACgo IN SAN LEANDRO

SAN LEANDRO CITY COUNCIL

May 21<sup>st</sup>, 2018

# BACKGROUND

- \* Voters approved Measure BB in 2014
  - \* Included additional \$24 million for AC Transit Service Expansion
- \* AC Transit conducted extensive outreach and analysis in 2015 about how to improve service
- \* Implementation was split into three packages

# BACKGROUND

- \* Survey Results

- \* Customers want more frequent, reliable service over a short walk to a bus stop
- \* Customers want simple service, loops too confusing
- \* Customers want longer service days

- \* Plan Goals

- \* Bring service up to minimum 30-minute frequency
- \* Break loops into simple, easy-to-understand lines
- \* Add weekend service and lengthen service day

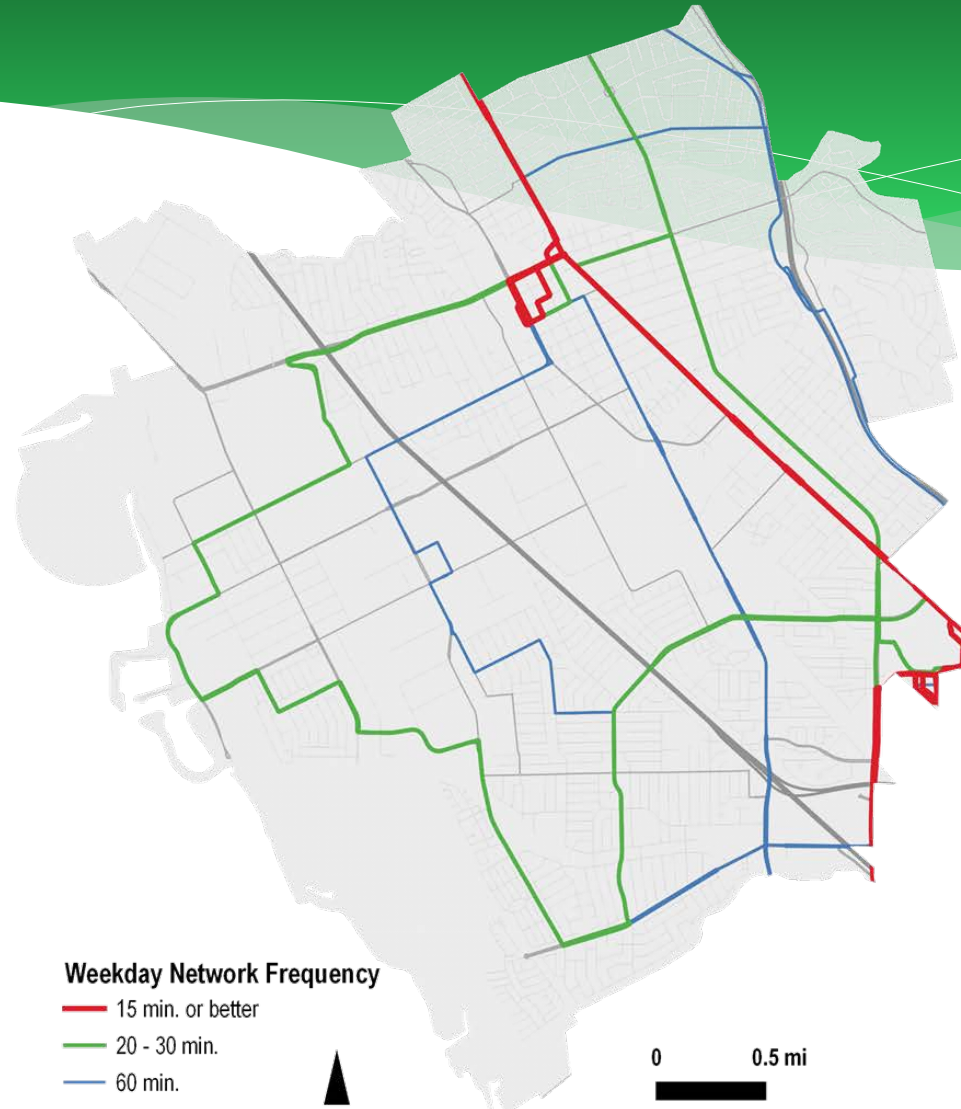
# BACKGROUND

- \* Core network of lines in San Leandro will operate every 30 minutes or better.
- \* Service will start earlier and end later in the day.
- \* New weekend service.
- \* New crosstown service (Lines 34 and 35).
  - \* Service every 15 minutes along Estudillo and Davis through Downtown.

# IMPROVEMENTS

NOW		JUNE	
Line 32	Hourly service, 7 days week	Line 28	30-min service weekdays, new weekend service
Line 48	Hourly service, weekdays only	Line 28	30-min service weekdays, new weekend service
Line 75	Hourly service, weekdays only	Lines 28, 34, 35	30-min service weekdays, new weekend service
Line 85	Hourly service, weekdays only	Lines 28, 34, 35, 93	30-min service weekdays, new weekend service
Line 89	Hourly service, weekdays only	Lines 28, 34, 35	30-min service weekdays, new weekend service
Line 93	Hourly service, 7 days week	Lines 10, 34, and 93	Weekday service between 15 min and 40 min
Span	No later than 8:00 p.m.	No line earlier than 10:00 p.m., 7 days/week	

# EXISTING WEEKDAY NETWORK

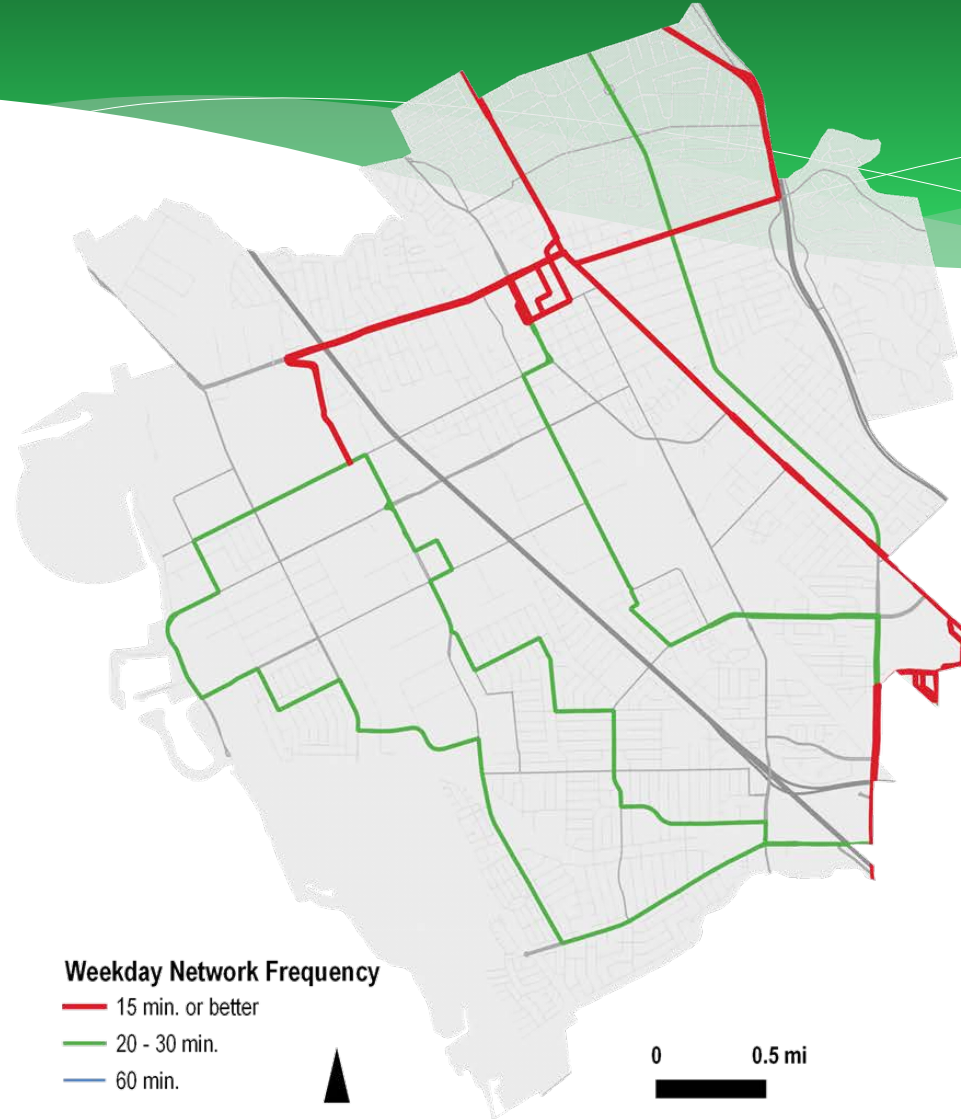


## Weekday Network Frequency

- 15 min. or better
- 20 - 30 min.
- 60 min.



# NEW WEEKDAY NETWORK



## Weekday Network Frequency

- 15 min. or better
- 20 - 30 min.
- 60 min.



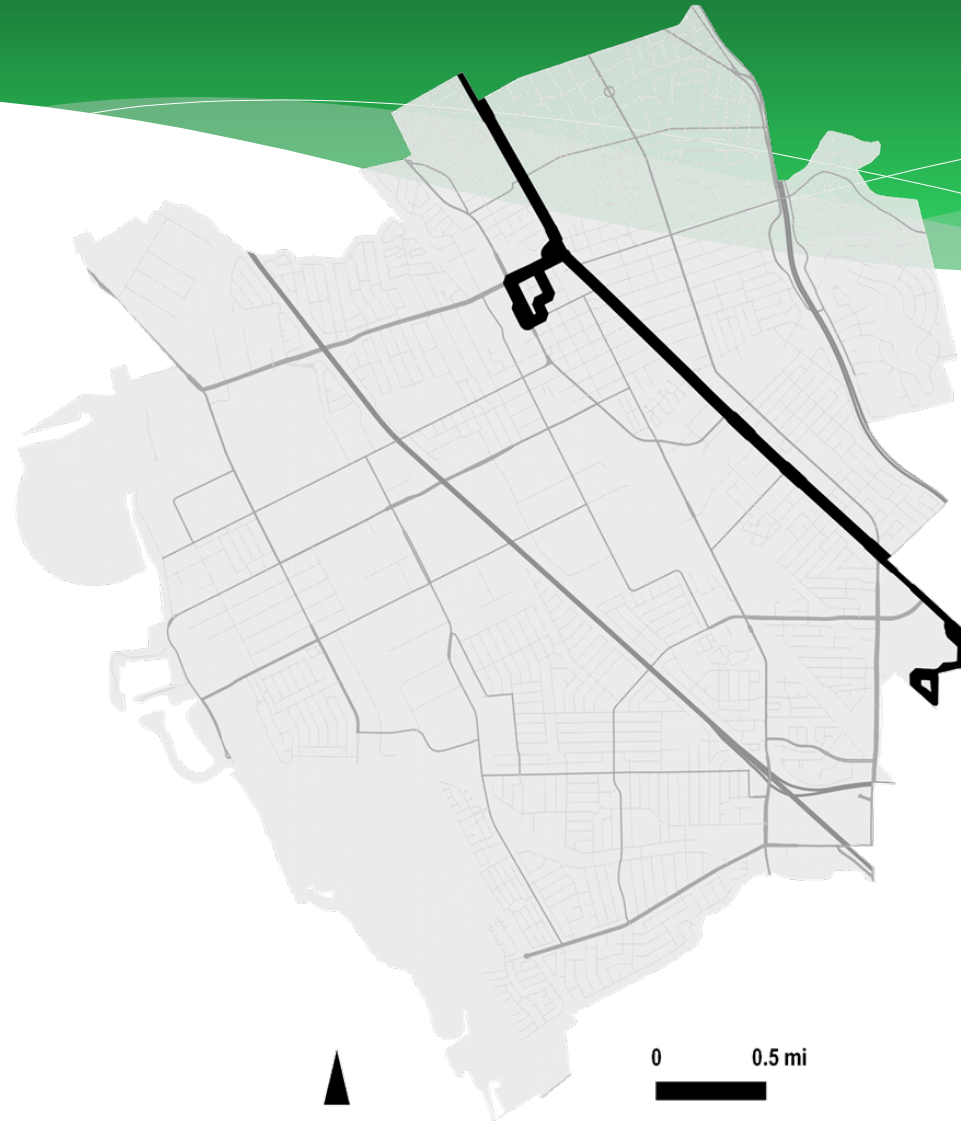
# EXISTING WEEKEND NETWORK



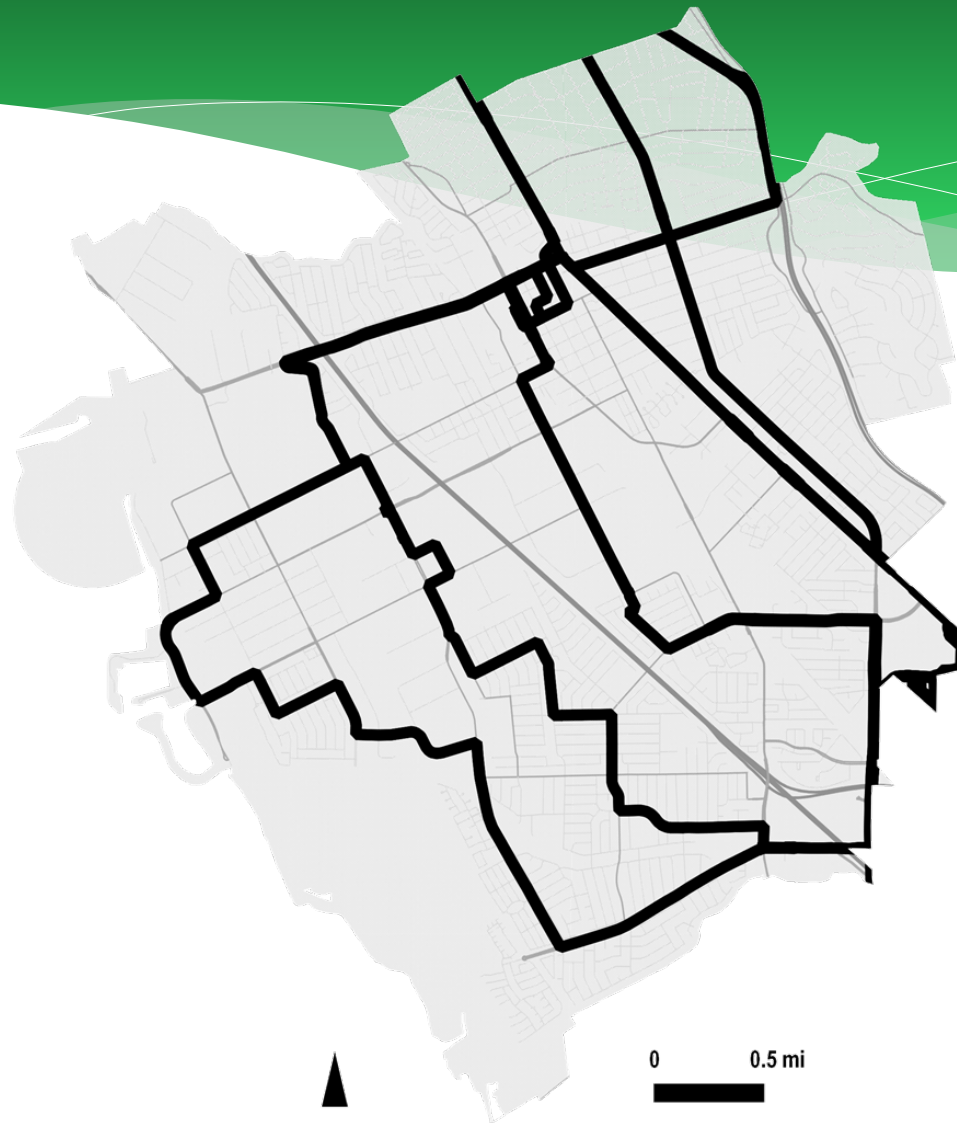




# EXISTING LATE-NIGHT NETWORK



# NEW LATE-NIGHT NETWORK



# NEW STOPS



# BUS STOP CHANGES

- \* June changes serve some new areas, discontinue service to other areas due to low ridership, and return service to some areas that had it in the past.
  - \* 8 brand new stops
  - \* 12 stops reactivated
  - \* 45 stops discontinued in areas with low ridership
- \* Some of the new or reactivated stops will require new red curb funded by AC Transit or ADA improvements to the adjacent sidewalk.
  - \* Should the stop-related work not be completed, these areas will not be able to take advantage of the new service
  - \* Some areas – including the Davis Street Family Resource Center – have advocated for the new service

# TIMELINE

- \* May/June 2018 | Work with City staff to prep new stops for service
- \* Late May 2018 | Public outreach
  - \* Website
  - \* Ambassadors
  - \* Car cards
  - \* Brochures/flyers
- \* June 17, 2018 | New service starts
- \* December 2018 – March 2019 | Make any adjustments to service based on feedback and analysis

# BRT UPDATE

## \$213M Investment in Our Community

- Dedicated Bus Lanes
- High-Frequency Service (every 7 min. at peak)
- Level and Multiple-door Boarding
- Transit Signal Priority (TSP)
- 21 center-median stations and 12 curbside stations
- Public art, new pavement, walkways, and native landscaping
- Updated ADA ramps
- 27 new hybrid-electric, 5-door buses
- Sheltered waiting stations with seating, cameras, and benches
- Real-time message signs (RTMS)



# BRT UPDATE

- San Leandro: 80% Complete
- Total Project: 30% Complete
- San Leandro Interim Condition Status: Estimated Early Summer 2018
- Revenue Service: December 2019





# BRT UPDATE

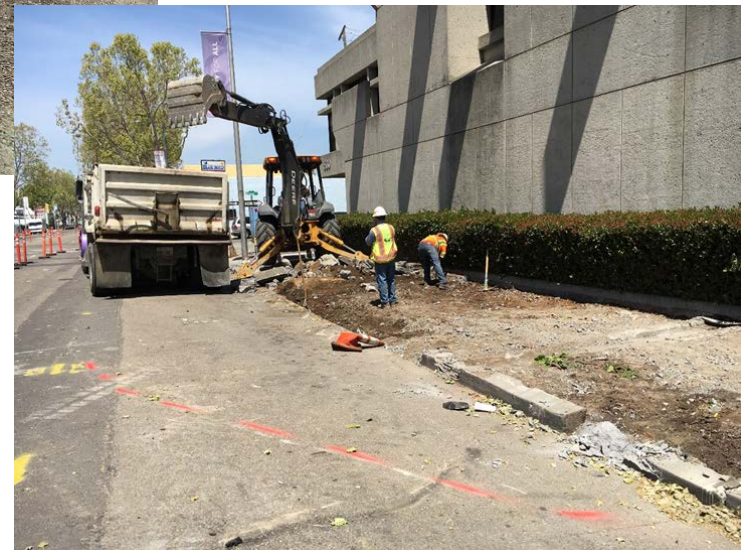
## Community Benefits in San Leandro to Date

- New Curb Ramps/Sidewalks – 48/57
- New/Modified Traffic Signals – 17/24
- New Street Lights – 0/2
- Station Platforms – 5/7



# BRT STATION PROGRESS

Durant Station



Georgia Way Southbound Station

Georgia Way Northbound Station

# BRT STATION PROGRES

Civic Center Southbound Station



Civic Center Northbound Station



Downtown Northbound Station



Downtown Southbound Station  
(to be constructed)



# BRT STATION FENCE WRAPS



**COMING SOON: BUS RAPID TRANSIT**  
Businesses Open During Construction

敬请期待：  
BUS RAPID TRANSIT  
施工期间  
正常营业

PRÓXIMAMENTE:  
BUS RAPID TRANSIT  
Negocios abiertos  
mientras dure la construcción

SẮP ĐẾN:  
BUS RAPID TRANSIT  
Các Doanh Nghiệp Mở Cửa  
Trong Lúc Xây Xâit

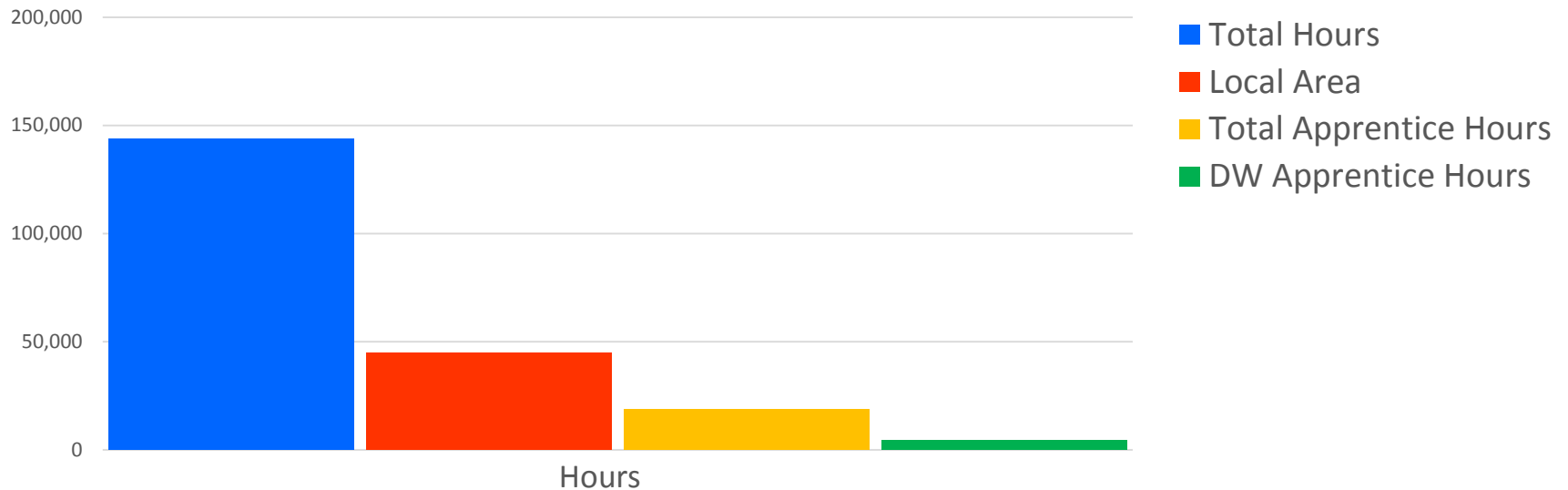


[brt.actransit.org](http://brt.actransit.org)



# WORKFORCE UTILIZATION

Work Hour Summary



Total Project Hours: 143,856

Total Local Hire Work Hours: 45,841 (31%)

Total Apprentice Hours: 18,842 (13%)

Total Disadvantaged Worker Hours: 4,328 (23% of Apprentice Hours)



# WORKFORCE UTILIZATION

JURISDICTION	No. Of Workers	WORK HOURS	PERCENTAGE OF LOCAL	Wages Earned
San Leandro	13	6,034	13%	\$180,841

# QUESTIONS?

Robert del Rosario  
Director, Service Development  
& Planning  
[rdelrosa@actransit.org](mailto:rdelrosa@actransit.org)  
510-891-4734

David Wilkins,  
Director, BRT Program  
[dwilkins@actransit.org](mailto:dwilkins@actransit.org)  
510-891-8211

Claudia Burgos  
Director, Legislative Affairs &  
Community Relations  
[cburgos@actransit.org](mailto:cburgos@actransit.org)  
510-891-7124

