

I-880 Davis Street Landscape Project

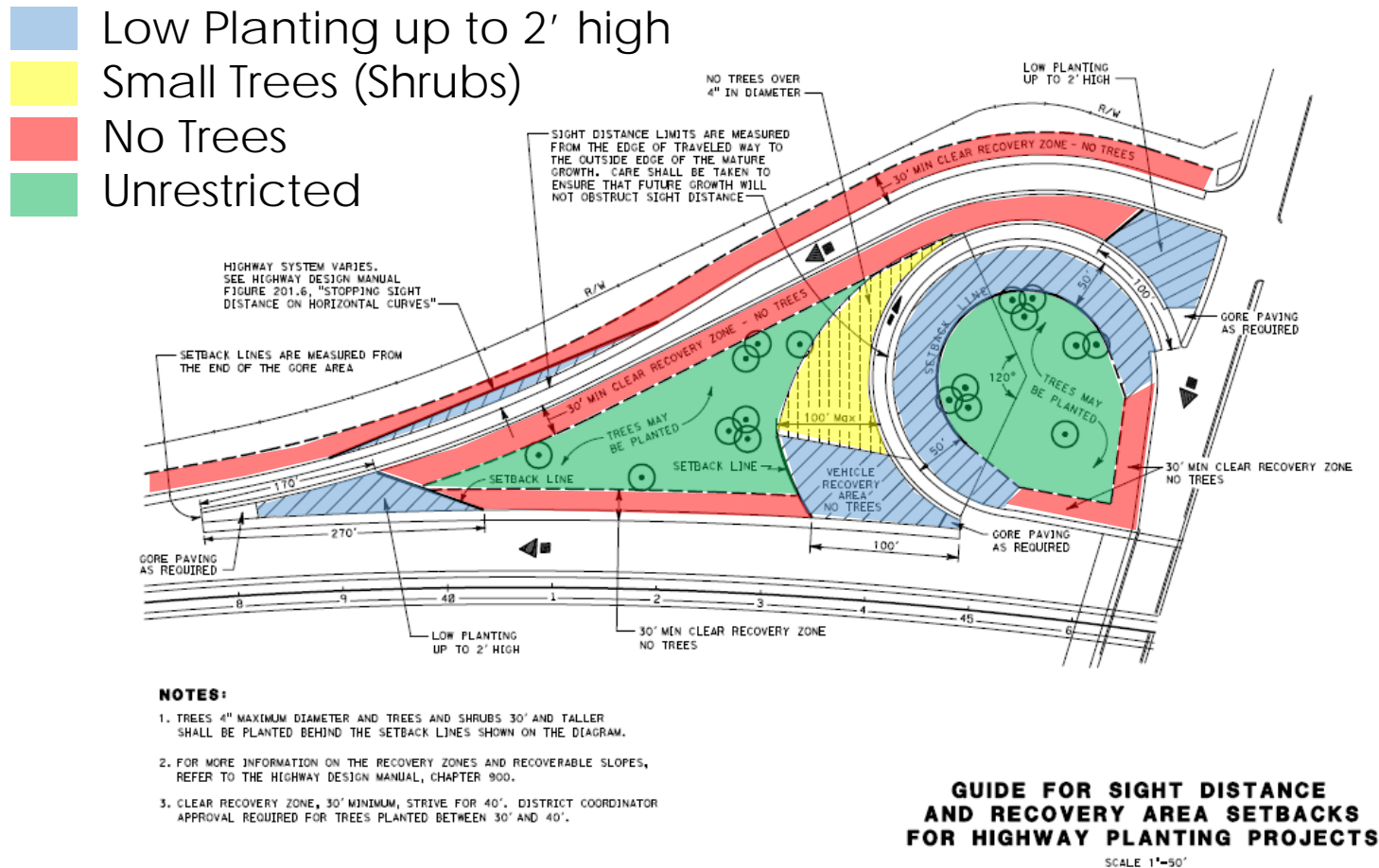


Project Vision and Achievements

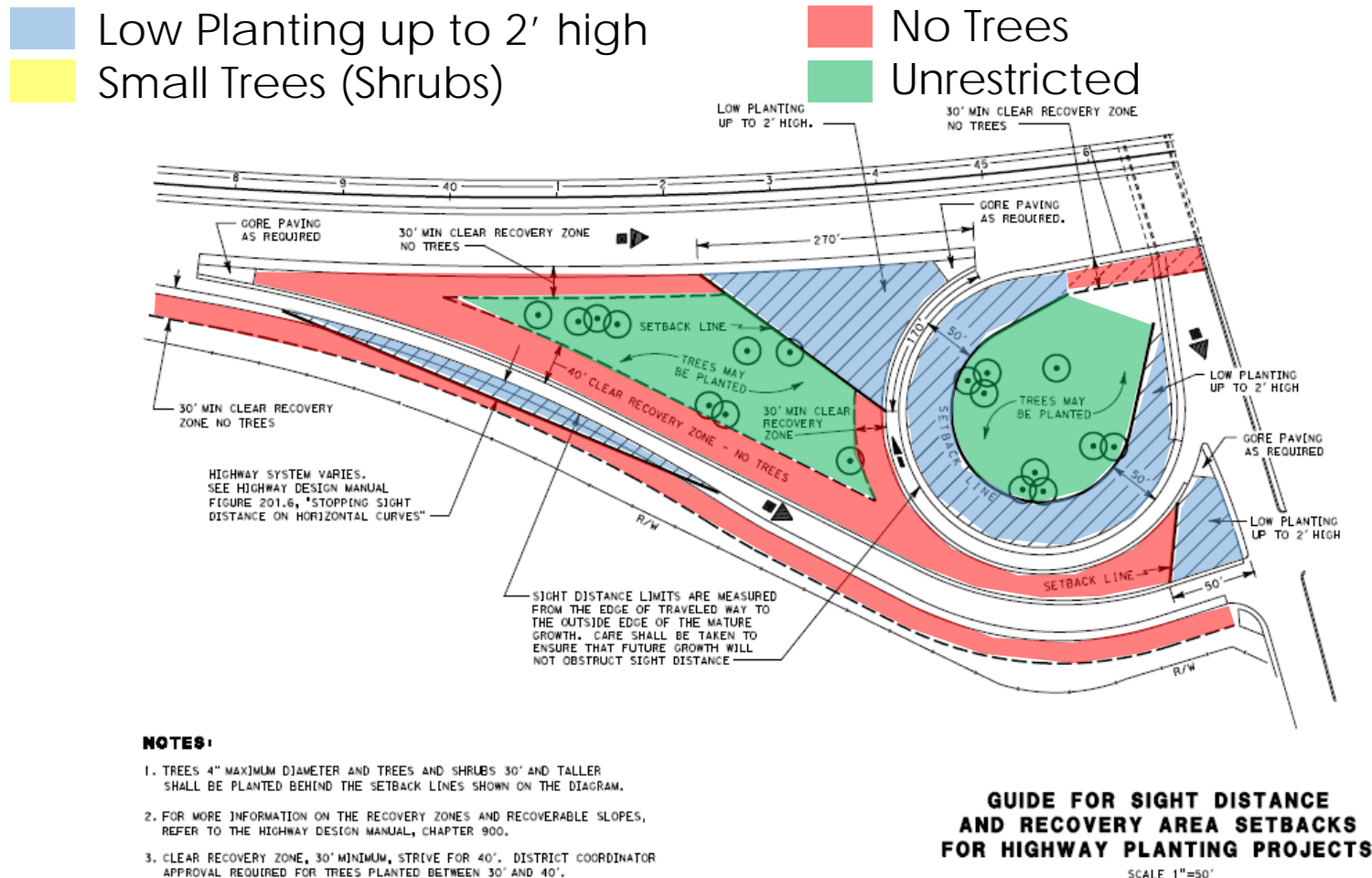
- The Davis Street Interchange is a major gateway to the City of San Leandro.
- Highway Contract – construct overcrossing aesthetics at the new Marina and Davis bridges and underpass hardscape treatment. **SUCCESSFUL COMPLETION.**
- Landscape Contract – install “Bay Friendly” theme consisting of highway planting of areas disturbed by the Highway Contract. **CONCEPT IS SUBJECT OF TODAY’S REVIEW.**

Caltrans Line of Sight Set-Backs

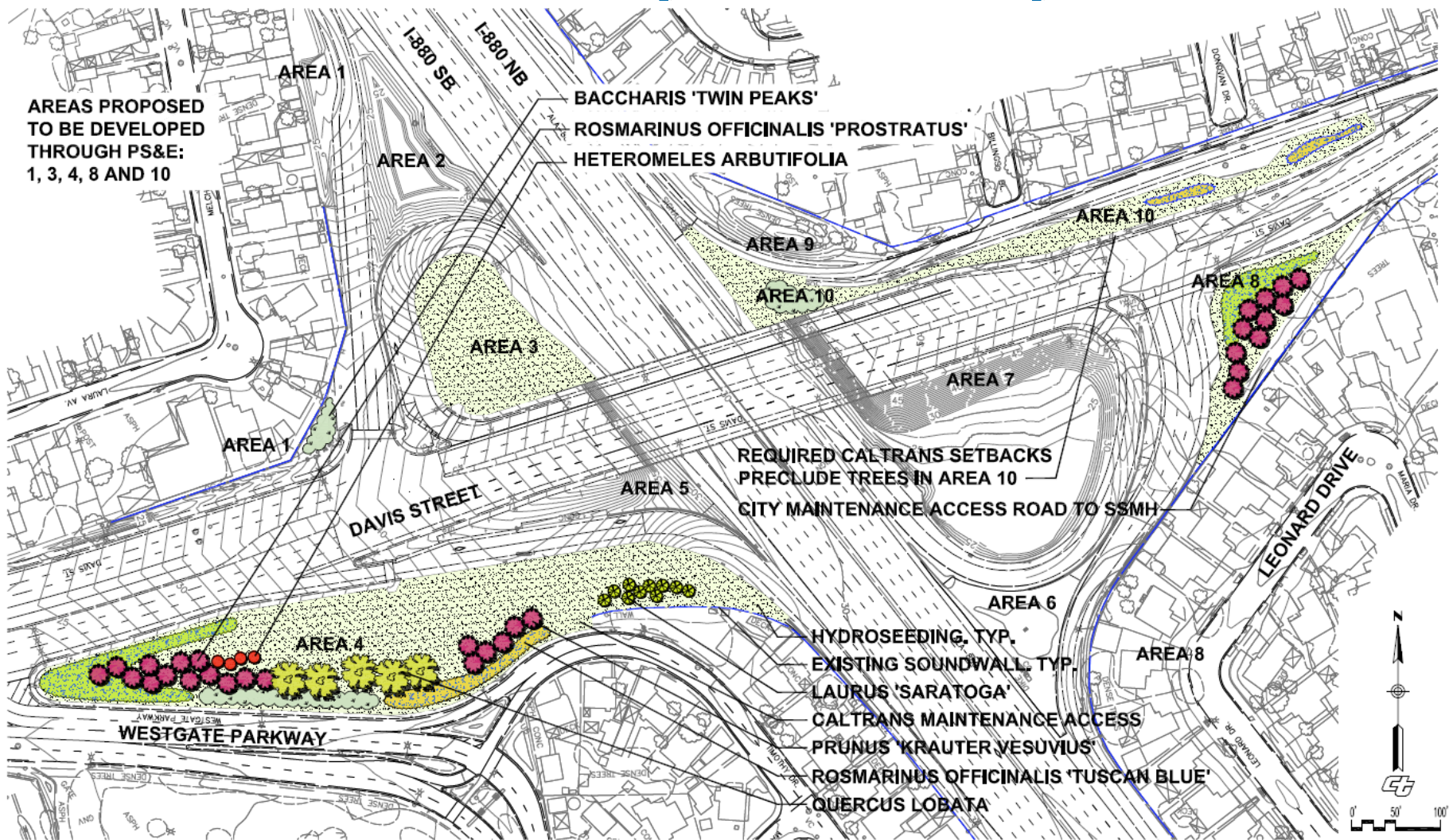
Guide for Sight Distance and Recovery Area Setbacks for Highway Planting Projects



Caltrans Line of Sight Set-Backs



Landscape Concept



Plant Species



Quercus lobata
Valley Oak
70' H x 50' W



Prunus c. 'Krauter Vesuvius'
Krauter V. Purple Leaf Plum
20' H x 15' W



Laurus 'Saratoga' Tree
Saratoga Laurel
25' H x 25' W



Laurus 'Saratoga'
Shrub
Saratoga Laurel
15' H x 15' W



Baccharis p. 'Twin Peaks'
Twin Peaks Coyote Brush
18" H x 6' W



Heteromeles arbutifolia
Toyon
10' H x 12' W



Rosmarinus 'Tuscan Blue'
Tuscan Blue Rosemary
4' H x 5' W



Rosmarinus 'Prostratus'
Prostrate Rosemary
3' H x 6' W

Schedule

- Begin Design July 2018
- Concept Design Oct 5, 2018
- 65% Design Jan 14, 2019
- 95% Design Mar 11, 2019
- Ready To List Apr 26, 2019
- Advertise Contract Jun 2019
- Award Contract July 2019
- Begin Construction Aug 2019
- End Construction Nov 2019

Questions?

Caltrans Setback Requirements

Plant Species	Set Back Distances From Outside Edge of Plant to: <i>(All dimensions subject to Caltrans Review/Revision)</i>			
	Traveled Way	Pavement	Fences	Ditches
Valley Oak	30'		20'	22'
Saratoga Laurel	40'		10'	12'
Purple Leaf Plum	40'		15'	17'
Toyon		15'	15'	17'
Twin Peaks Baccharus		10'	10'	10'
Tuscan Blue Rosemary		6'	6'	8'
Prostrate Rosemary		10'	6'	8'