

Shared Active Transportation Small Vehicles

City of San Leandro
Facilities & Transportation Committee Meeting
July 3, 2019

Agenda

- Shared Active Transportation
- The Public Authority
- Managing Shared Active Transportation
- State of Practice
 - National Association of City Transportation Officials – NACTO Guidelines for the Regulation and Management of Shared Active Transportation



Shared Active Transportation

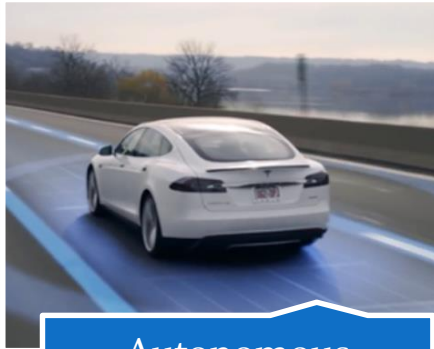
- Shared Active Transportation – A network or system of small vehicles, placed in the public right-of-way and for rent in short time increments that provides increased mobility options over short distances in urban areas
- Small Vehicles – Bikes, scooters, e-bikes, e-scooters and other small wheeled vehicles designed specifically for shared-use and deployed by Shared Active Transportation companies



What's Old is New



Transportation Options



Autonomous
Vehicles



Ridesharing/Carpool



Microtransit/Private
Transit



E-bike/Scooter Share



Ride-hailing

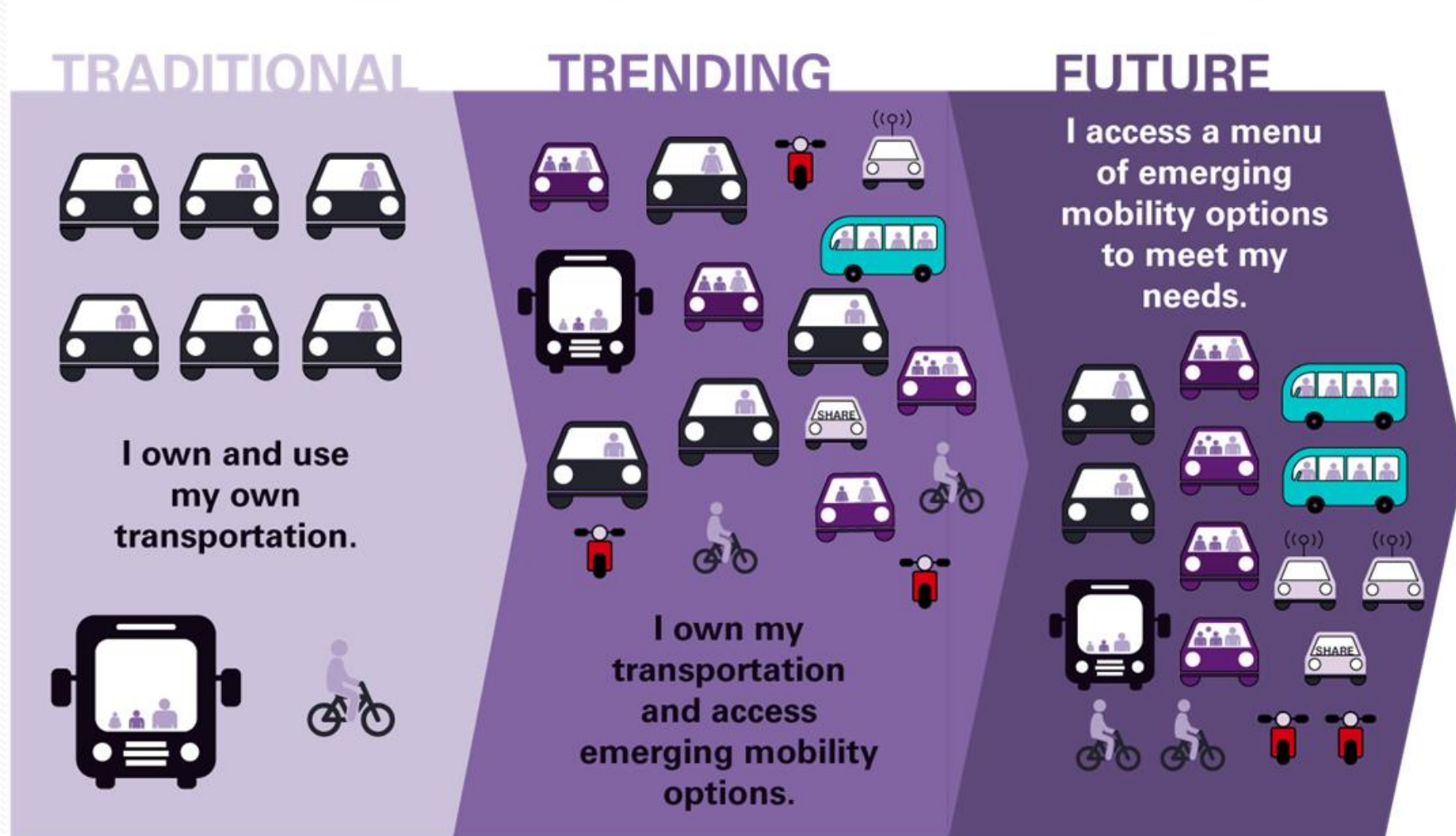


Carshare



Bikeshare

Transportation Choices



The Public Authority

- Local jurisdiction must exercise their fundamental responsibility to ensure the safe passage on the public right-of-way, to protect public safety and welfare, and govern commerce in the public right-of-way and on private property



Federal & State Regulations

- Federal – Consumer Product Safety Commission
 - 15 U.S.C. 2085 Low-speed Electric Bicycles
 - Provides for publishing intended use statements
- State
 - First motorized scooter definition – 1999
 - Definitions in the CA Vehicle Code – 407.5
 - AB 2989
 - Speed Limit of 35mph
 - Helmet required for under 18
 - AB 1286 – Proposed
 - Minimum Insurance & City regulations can supersede



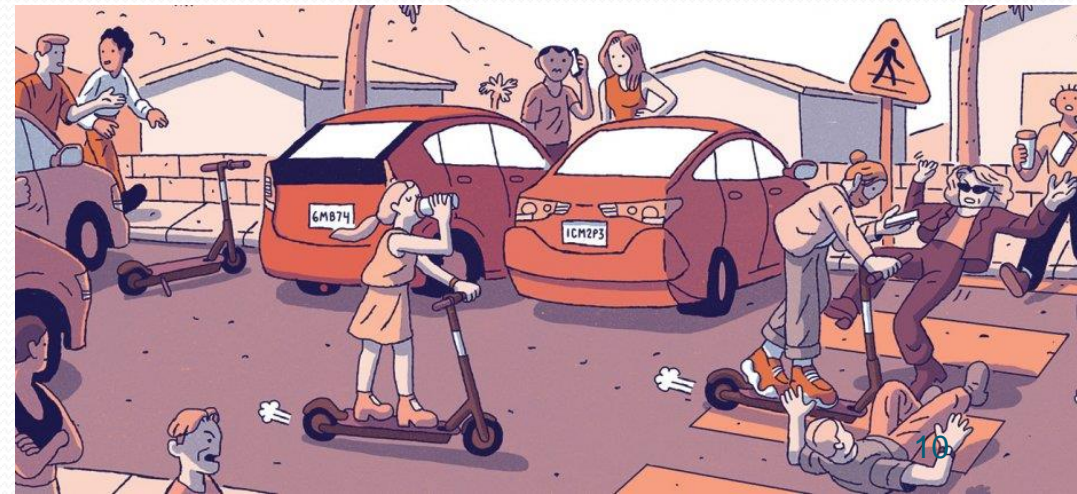
California Vehicle Code 21235

- Must be equipped with a brake
- Operate on highway with a speed limit < 25 mph or Class II or IV bikeway or by local code on highway up to 35 mph. Max speed of 15 mph
- Must wear a bicycle helmet if under 18
- Valid driver's license or instruction permit required
- No passengers
- At least one hand upon the handlebars
- No riding on a sidewalks
- Handlebars must be below shoulders
- Must park upright and not block pedestrian traffic
- No attachment to any other vehicle



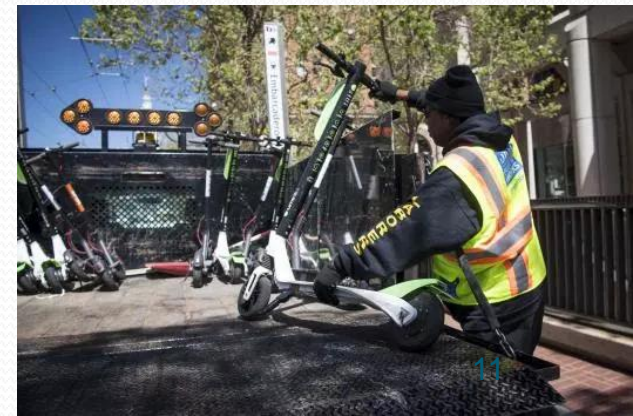
San Leandro Municipal Code

- CHAPTER 5-5 FRANCHISE
 - 5-5-105 AUTHORITY TO GRANT
 - Provides for franchise requirement to furnish City with transportation service and use the public streets
 - 5-5-135 EXERCISING RIGHT WITHOUT FRANCHISE
 - A misdemeanor if operating without a franchise



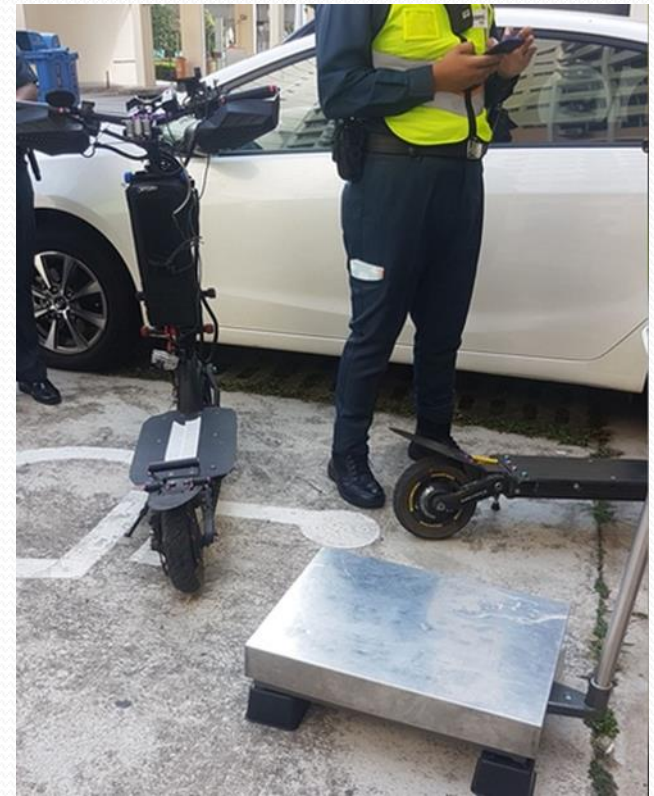
San Leandro Municipal Code

- CHAPTER 3-1 COMMUNITY PRESERVATION ORDINANCE
 - 3-1-205 UNLAWFUL PROPERTY NUISANCE – PUBLIC PROPERTY
 - A unsafe condition such that some threat to public health and welfare is unlawful
 - 3-1-210 DECLARATION OF PUBLIC NUISANCE
 - Public nuisance violation are to be abated as provided by CHAPTER 1-12
- CHAPTER 1-12 CITATION – VIOLATIONS
 - 1-12-500 SUMMARY ABATEMENT PROCEDURE
 - Without prior notice a public nuisance which endangers the public health, welfare or safety may be immediately abated



Managing Shared Active Transportation

- Statewide Policy
 - Oversight & Authority
 - Data Standards
 - Small Vehicle Standards for the Shared-Use Context
- Local Policy
 - Small Vehicle Parking
 - Community Engagement and Equity Programs



Oversight & Authority

- General Provisions
 - License, Permit or Contract is required to operate
 - Reserve the right to limit the number operators
 - Maintain the power to revoke the right to operate for failure to comply with terms
 - Prohibit companies based on prior conduct
 - Establish operating zones and remedies for operating outside designated areas
 - Set duration operation and require regular renewal process
 - Charge fees and assess penalties that reflect cost of managing operation
 - Require insurance and indemnification



Oversight & Authority

- Operations Oversight
 - Require removal of damaged or poorly parked scooters within specific time frames
 - Procedures & protocols:
 - Extreme weather & Emergencies
 - Special events
 - Maintenance of designated parking zones
 - 24-7 locally-based staff to respond to issues at any time
 - Ability to provide staffing and operations plans
- Public Communications Oversight
 - Maintain a city-specific website with user information
 - 24/7 Customer service number on all equipment



Data Standards

- Data Provision & Access
 - Provide in General Bike Share Feed Specification format
 - Right to reports on use, compliance, complaints, collisions, damaged vehicles
 - Make anonymized trip data available for public use in creating apps
 - Data shall be provided directly to the city
 - Agreed upon submittal timeframes and retention policies
- Data Quality
 - Transmit info every 90 seconds
 - GPS equipment is affixed
- Data Privacy
 - Ensure customer data privacy
 - Written protocol for handling data



Small Vehicle Standards for Shared-Use

- Meet Consumer Product Safety Commission and all other safety standards
- Schedule for inspection, maintenance and replacement
- Remote lock-down when reported unsafe
- Maximum speed of 15mph



Local Policy

- Small Vehicle Parking
 - Locking Options
 - Where in the Right-of-Way?
 - How can space be provided or marked
- Community Engagement and Equity Programs
 - Discount Programs
 - Engagement Programs



Small Vehicle Parking

- Locking Options
 - Unrestricted – can be left anywhere that doesn't block ADA-req. walk space
 - Encouraged Placement - recommended location are incentivized
 - Lock-to – locked to a fixed object
- Where in the Right-of-Way?
 - In the street
 - On the sidewalk
- How can space be provided or marked?
 - Painted Boxes
 - Street Corrals
 - Signed Sidewalk Racks
 - Geo-Fencing



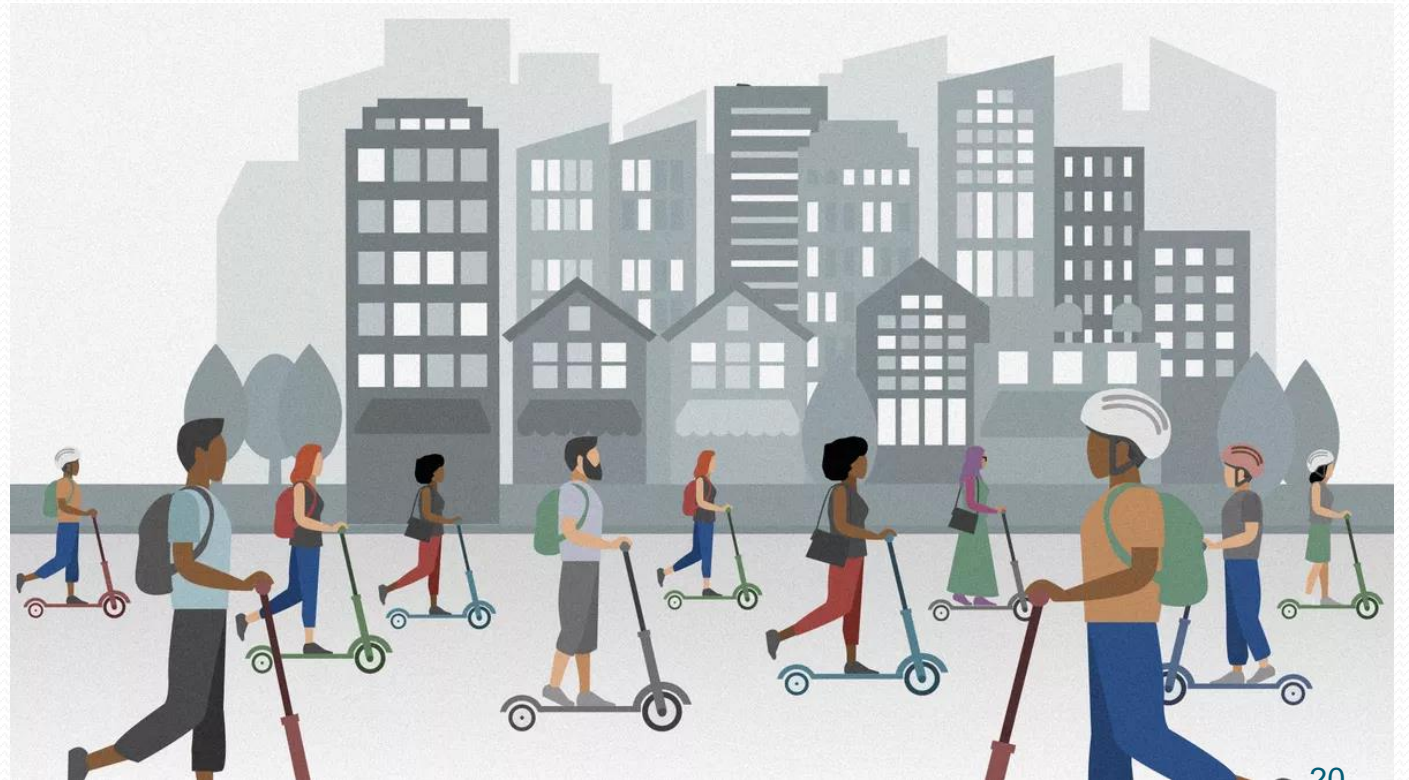
Community Engagement & Equity

- Discount Programs
 - Income Verification
 - Payment Options
 - Options for people without smartphones
- Engagement Programs
 - Education Programming
 - Participation at public events
 - Provision for education classes
 - Partner with job-training programs
 - Multilingual mobile apps and other interfaces



State of Practice

- Fleet Size and Service Area
- Small Vehicle Distribution
- Fees and Pricing
- Equity Programming
- Permit Overview



State of Practice

City	Number of E-scooters	Type of Agreement	Permit Fee	Unit Fee
Oakland	40	Permit	\$30,000	\$64
San Francisco	625 initial/2500 max	Permit/Pilot	\$25,000	-
Emeryville	n/a	Permit	\$15,000	-
Berkeley	200 initial/ 1200 max	Franchise	\$20,000	
San Jose	900 permitted	Permit	\$2,500	\$124
Palo Alto	100 minimum	Permit	Unknown	Unknown

Questions?

