

ALAMEDA COUNTY TRANSPORTATION COMMISSION

East Bay Greenway

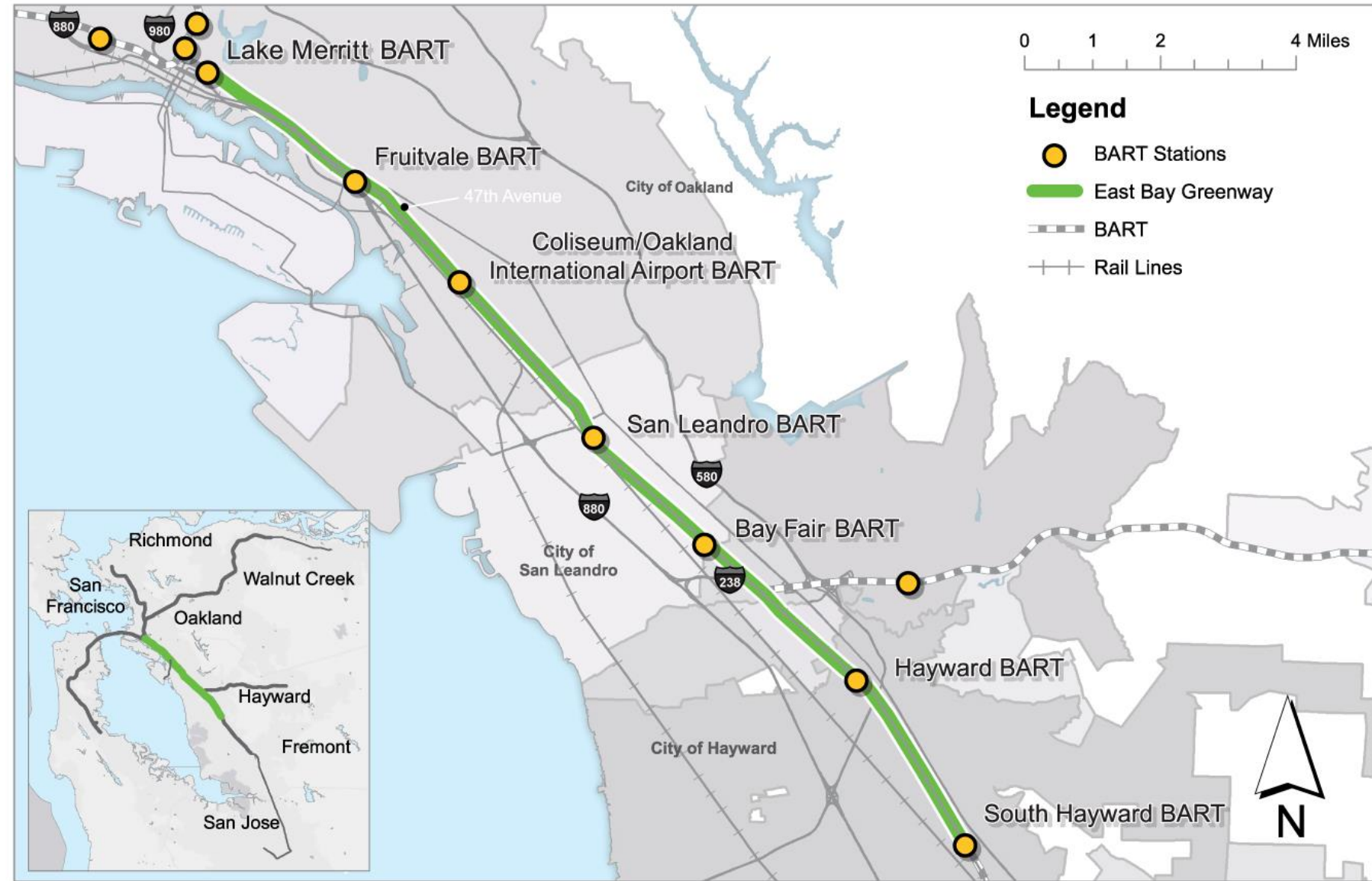
(Lake Merritt to South Hayward BART)



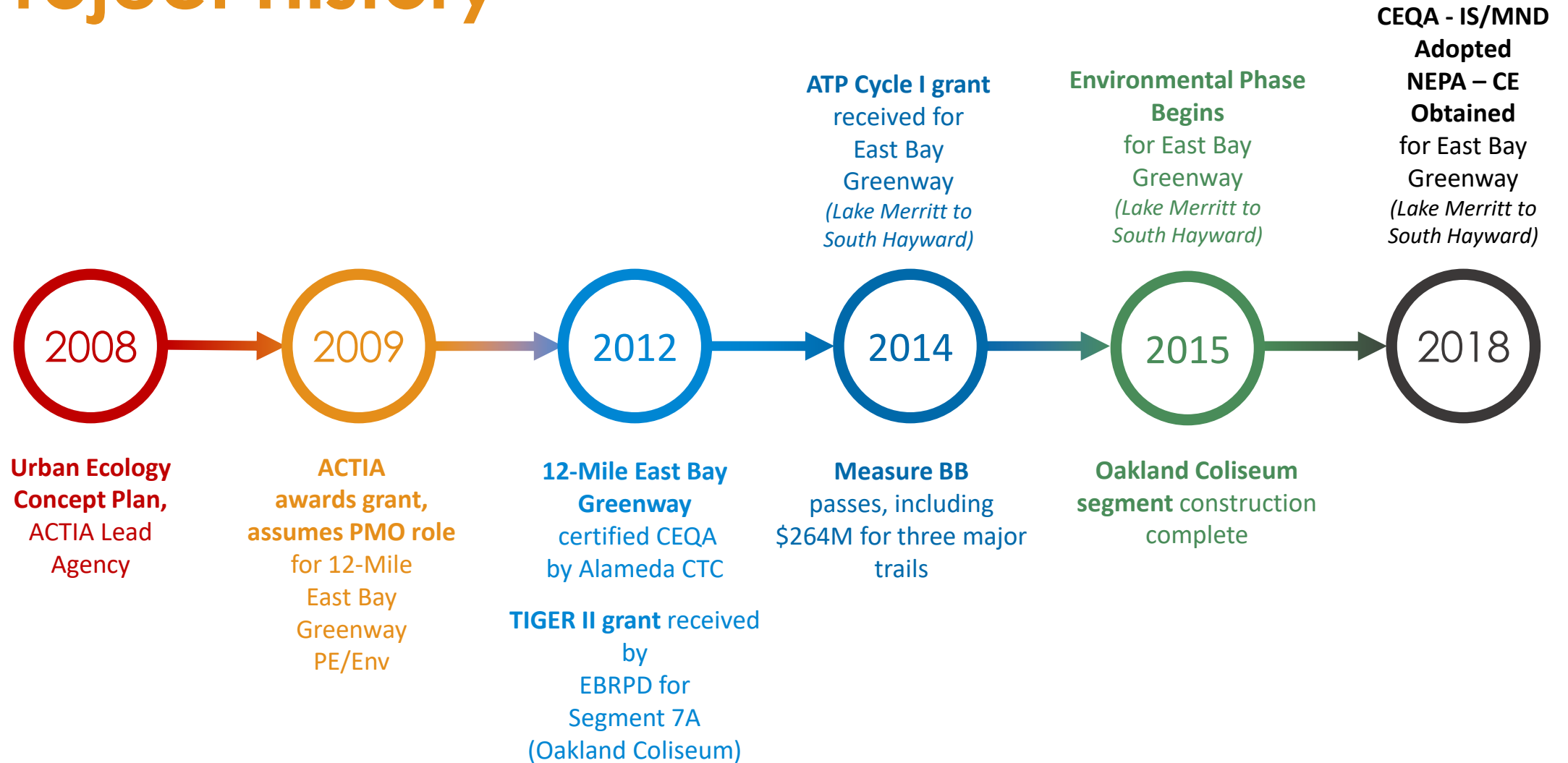
Presented To
Facilities & Transportation Committee
September 10, 2020

Overview

- 16 Mile Corridor
- Connects 7 BART Stations
 - Class I and Class IV facilities
- Provides modernized bicycle and pedestrian crossings at streets



Project History



Both concepts



Environmental Clearance
Footprint



BART



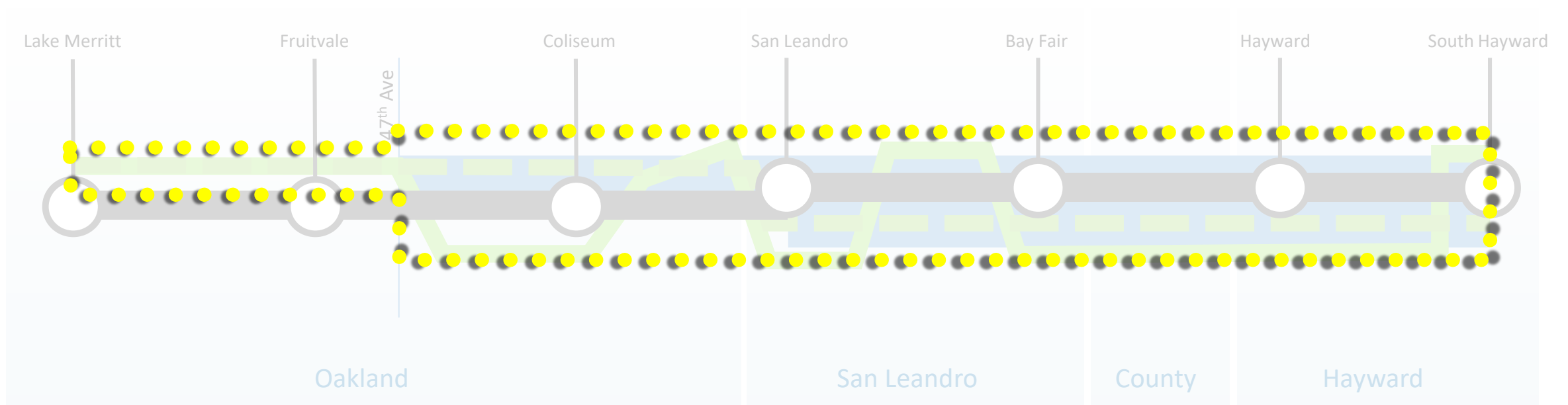
UPRR



Rail-to-Trail

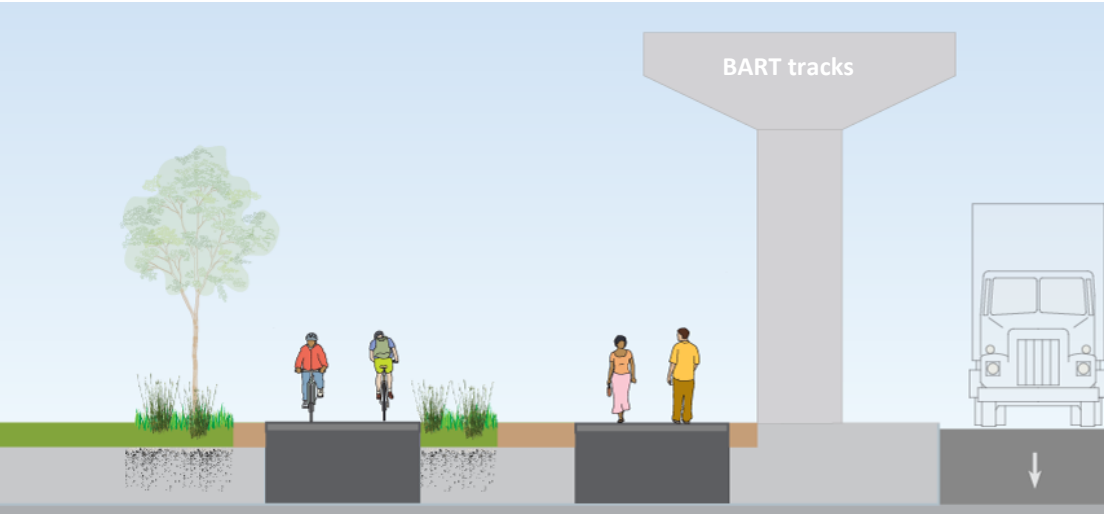


Rail-with-Trail



Rail-to-Trail

(using **full** railroad right-of-way)

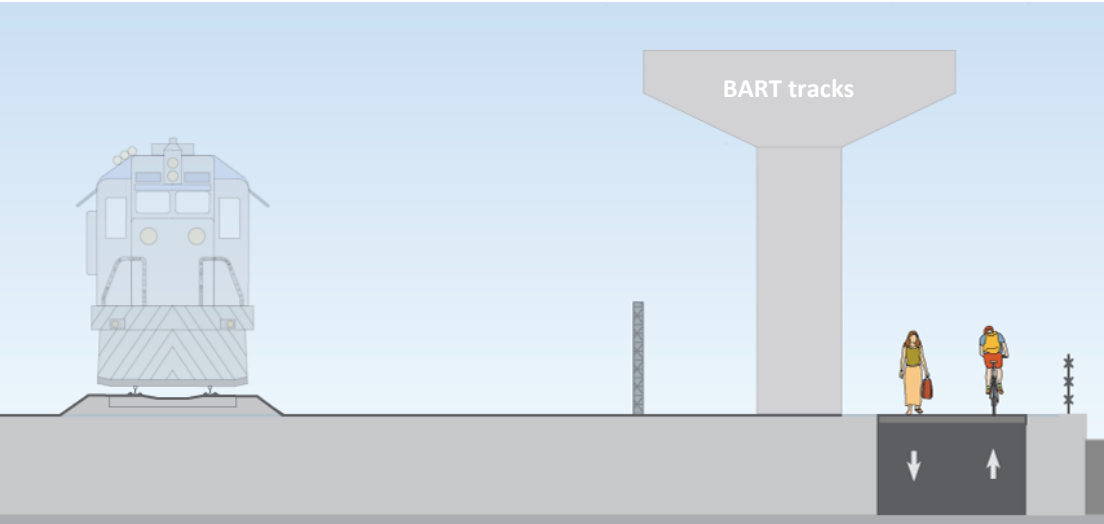


Railroad right-of-way

Environmental Clearance Footprint

Rail-with-Trail

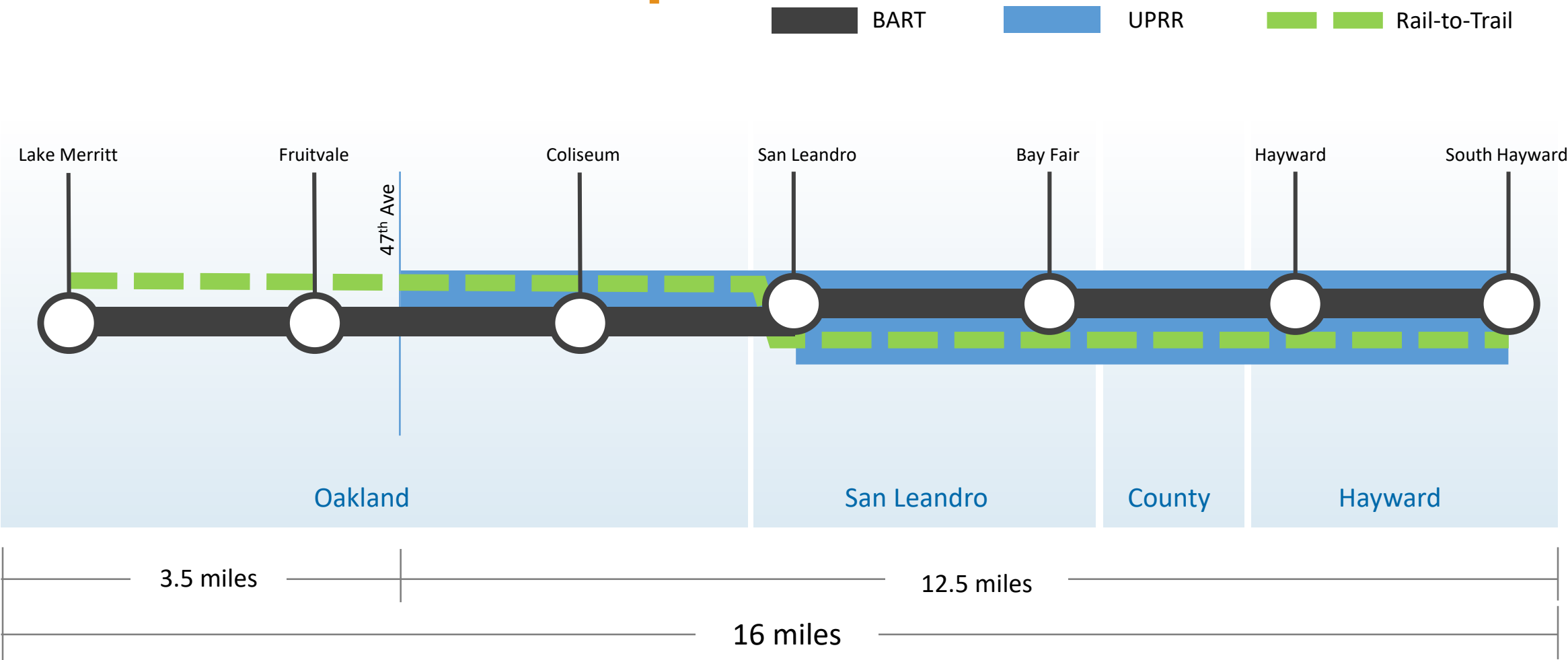
(**limited** railroad right-of-way available)



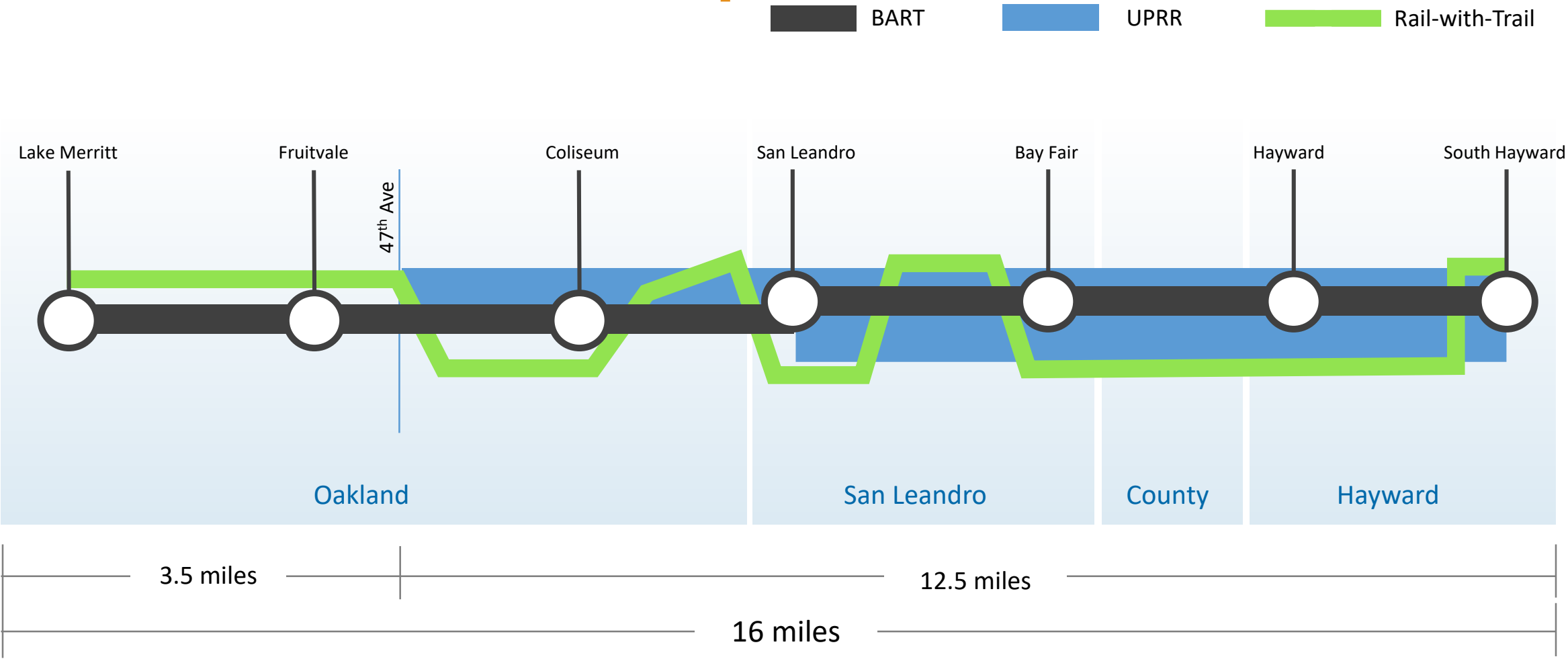
Railroad right-of-way

Environmental Clearance Footprint

Rail-to-Trail Concept



Rail-with-Trail Concept



Future Phases



Design Aesthetic Document

Urban Design Elements #1: Lighting, Fencing, Color

Lighting

Project-wide Guidance

Pathway Lights

Branded Greenway or Jurisdiction-specific

Roadway Lights



Fencing

Types by Location

Rail Fence

Branded Greenway or Jurisdiction-specific

Welded Wire

Chain Link

Other



Color

Branded Greenway or Jurisdiction-specific

Color Selection

RAL 075 70 RAL 050 51 RAL 120 6

EAST BAY GREENWAY

A1: This or similar



A2: This or similar



B. Jurisdiction standard Pathway light pole and luminaire with consistent Greenway color— Review of Oakland's Street Light Design Manual and other agency standard lighting details available on the internet, it appears there is no one consistent light across all jurisdictions. It is unclear if all jurisdictions have a standard pathway or pedestrian light. Jurisdictions use their own pathway light standard, but they would be colored the same along the Greenway to provide a consistent appearance along the project.

C. Roadway light pole and luminaire – if new roadway lighting is needed, it should follow each jurisdiction's standard along that street segment.

Design Options include:

- A. Conform to Segment 7A design (San Leandro Street from 75th Street to 85th Street, in Oakland).



Existing rail fence along Segment 7 A.

- B. Use Segment 7A design that includes a shorter railing panel (with or without a different design pattern) placed at intervals to provide greater interest and rhythm along street. The shorter panels could be city or district themed. Adjacent is example of varying railing panel lengths:



- A. Use typical standard color – Black
- B. Use typical standard color – Gray (note: each manufacturer has their own standard gray color)
- C. Use Segment 7A color (San Leandro Street from 75th Street to 85th Street, in Oakland) – Teal Green
- D. Use a Greenway corridor-wide unique color. Below are some potential curated colors; these or other jurisdictional preference could be used. D1 – Yellow Orange, D2 – Dark Lime Green , D3 – Vermillion, D4 –Lime Green.

Potential unique color options include (lettered to match above):

D1 RAL 075 70 80	C RAL 5020	D2 RAL 120 60 63	A
D3 RAL 050 50 70	D4 RAL 120 70 75	B	

A. Each jurisdiction uses wayfinding signage that follows their guidance documents or if no guidance exists, is designed by the jurisdiction, and has the East Bay Greenway logo as an individual sign placed above it.



B. Use a single wayfinding sign that combines a Greenway-specific logo with wayfinding information that is used along the Greenway consistently across all jurisdictions.



Design Aesthetic Document - Recap

Urban Design Elements #2: Wayfinding Signage, Amenities, Walls & Bridges

Wayfinding Signage

East Bay Greenway Logo and Signage Style
Pole/Post Mounted
Pavement Applied
Interpretive



Trail Amenities

Seating
Trash/Recycling Receptables
Other



Retaining Walls, Bridges and Ramps

Retaining Walls
Pedestrian and Bicycle Bridges and Associate Ramps



Design Aesthetic Document

Urban Design Elements #3: Hardscape, Landscape, and Green Infrastructure

Hardscape

Hardscape Features in Public ROW

Existing Character

Greenway Character

Trail Treatment within/outside of Public ROW



Landscape

Landscape Features in Street ROW

Landscape Features outside Street ROW

Plant Materials and Placement



Green Infrastructure

General Guidance

Types and Usage



Design Aesthetic Document - Recap

Urban Design Elements - *Feedback Received*

Branding

Consistent, modern look
Branded Trail Logo



Color

Green to tie in to “Greenway”

Style

Good-looking, not just utilitarian
Equitable with other regional trail facilities



Lighting

Follow street lighting style in use by each jurisdiction
Consistent pathway lighting style
LED



Questions